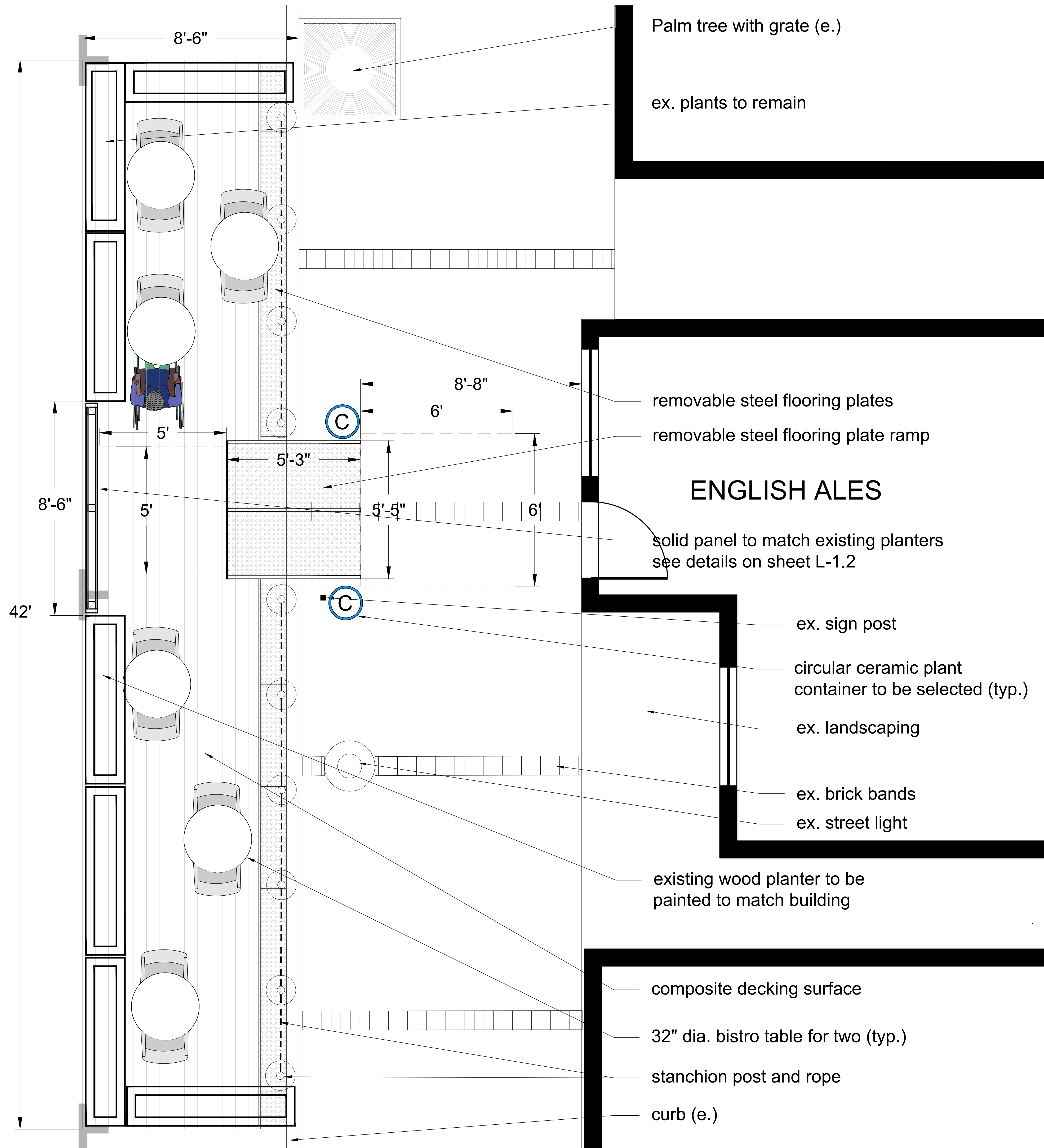
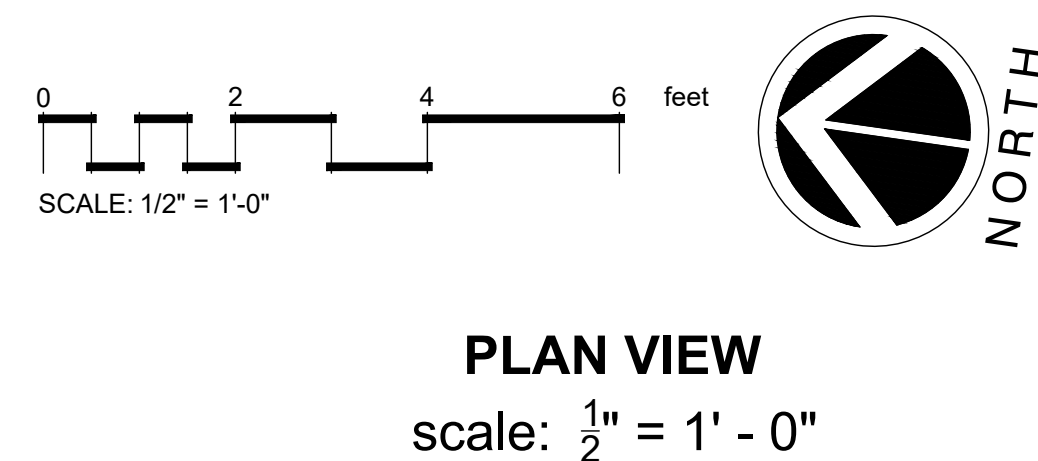


CONSTRUCTION NOTES:

1. Contractor shall notify Underground Service Alert (USA) at 811 to verify the location and depth of all existing utilities prior to any demolition, trenching or excavation.
2. Contractor shall take care not to damage in any way, any existing elements to remain. Such damage is the responsibility of the contractor and shall be replaced or repaired to match the original at no additional cost to the owner.
3. All dimensions and elevations shall be verified in the field and chalked, flagged or string lined prior to any construction. If any discrepancies occur, notify Landscape Architect immediately before proceeding.
4. CONTRACTOR SHALL CLEARLY LAYOUT ENTIRE HARDSCAPE DESIGN USING CHALK, FLAGS, OR PAINT TO DEFINE ALL NEW LANDSCAPE ELEMENTS. CONTRACTOR SHALL RECEIVE APPROVAL FROM OWNER PRIOR TO START OF INSTALLATION.
5. Use BOLT HOLD asphalt anchors (or equal product) with epoxy grout to connect 2" x 6" PT Doug Fir to street as shown in detail on this sheet L-1.1. and for anchoring bike racks to asphalt. Available at https://www.asphaltanchors.com/all_products
6. All support structures shall be constructed using pressure treated Doug. Fir. Joists for the deck and the perimeter supports will have to be cut to conform to the slope of the street.
7. Deck surface shall be composite material (TimberTech, Trex or equal product). The manufacturer, color and style shall be selected by owner and approved by city prior to installation. See photo examples on sheet L-1.2. Contractor shall review and install the deck as per the installation manual for the selected decking product.
8. Recommended joist spacing for most composite decking is 12" on center, to a maximum spacing of 16" on center. Joist spacing shown on deck plan is 12" o.c.
9. Steel ramp shall connect new dining deck to existing walkway. See photo example on sheet L-1.1. Available from American Metals or equal product. The slope of the ramp from curb/sidewalk to dining deck elevation shall not exceed 1:12, the allowable slope for ADA compliance (.083). The ramp shall comply with all current ADA standards. A 5' x 5' clear space at the top of ramp shall be provided. A 6' x 6' clear space at the bottom of the ramp shall be provided.
10. Owner shall pay in lieu fee to City of Capitola for bike parking as per agreement.



ENGLISH ALES
111 CAPITOLA AVENUE
CAPITOLA, CALIFORNIA

© Michael Arnone Landscape Architect - 2023
 THESE DRAWINGS ARE INSTRUMENTS OF SERVICE, ISSUED FOR A ONE-TIME SINGLE USE BY THE OWNER. THE ENTIRE CONTENTS OF THESE DRAWINGS IS COPYRIGHT © MICHAEL ARNONE LANDSCAPE ARCHITECT. LANDSCAPE ARCHITECT RETAINS ALL RIGHTS AND TITLE. NO PART MAY BE REPRODUCED IN ANY FASHION OR MEDIUM WITHOUT THE EXPRESS WRITTEN APPROVAL OF THE LANDSCAPE ARCHITECT. THE PROPER ELECTRONIC TRANSFER OF DATA SHALL BE THE USER'S RESPONSIBILITY WITHOUT LIABILITY TO THE LANDSCAPE ARCHITECT.

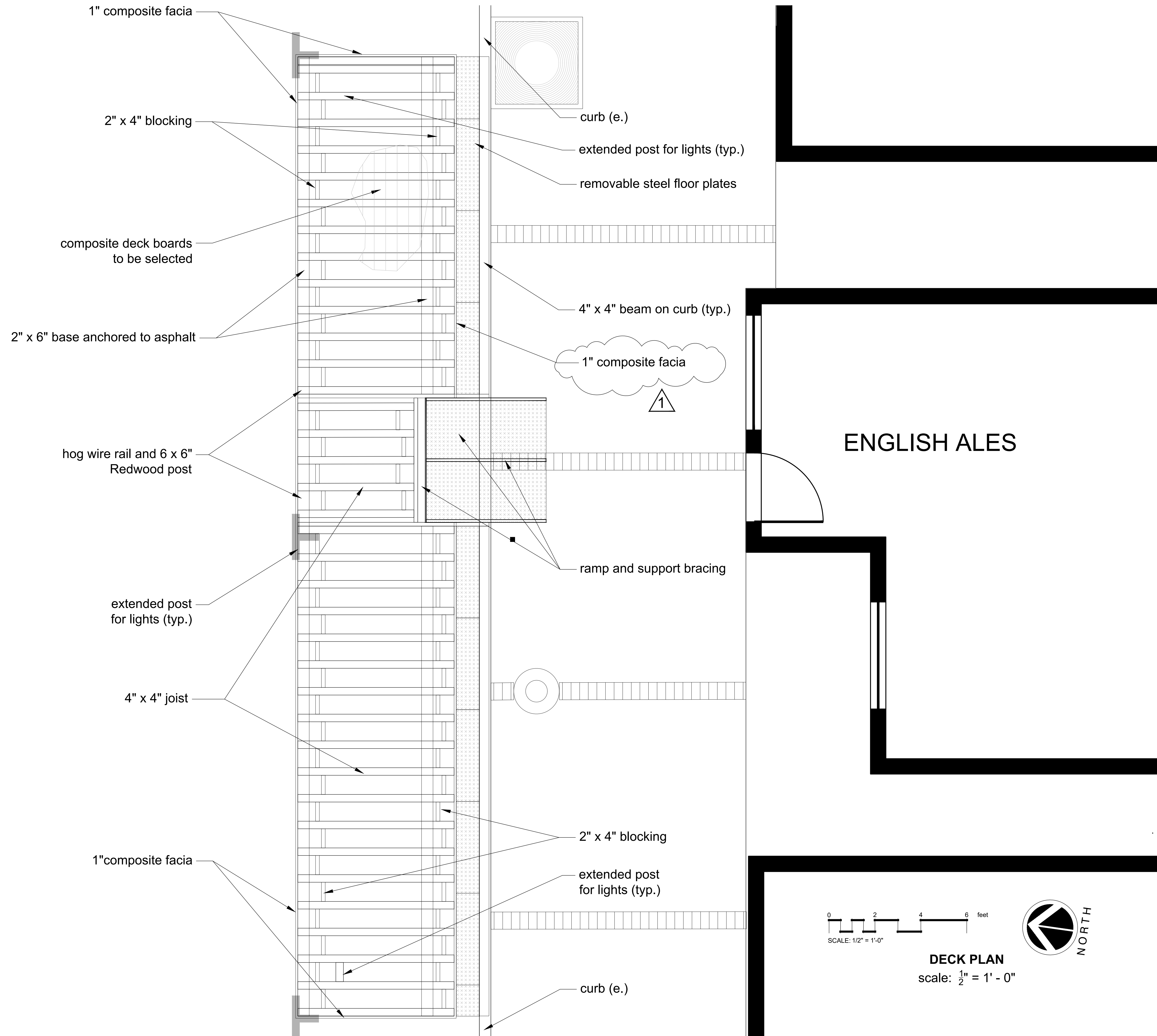
OWNER SHALL ASSUME RESPONSIBILITY FOR COMPLIANCE WITH ALL EASEMENTS, SETBACK REQUIREMENTS AND PROPERTY LINES. OWNER SHALL ACQUIRE ALL NECESSARY PERMITS REQUIRED TO PERFORM WORK SHOWN ON PLANS. BASE INFORMATION HAS BEEN PROVIDED BY THE OWNER. MICHAEL ARNONE LANDSCAPE ARCHITECTURE ASSUMES NO LIABILITY FOR THE ACCURACY OF SAID PROPERTY LINE BOUNDARIES, FENCE LINES OR PROPERTY CORNERS.

REVISIONS

**OUTDOOR DINING
SITE LAYOUT PLAN**

JOB NO. 202223
 SCALE as noted
 DRAWN MA
 DATE 7.12.23

SHEET
L-1.1



ENGLISH ALES
111 CAPITOLA AVENUE
CAPITOLA, CALIFORNIA

ENGLISH ALES

© Michael Arnone Landscape Architect - 2023

THESE DRAWINGS ARE INSTRUMENTS OF SERVICE, ISSUED FOR A ONE-TIME SINGLE USE BY THE OWNER. THE ENTIRE CONTENTS OF THESE DRAWINGS IS COPYRIGHT © MICHAEL ARNONE LANDSCAPE ARCHITECT. LANDSCAPE ARCHITECT RETAINS ALL RIGHTS AND TITLE. NO PART MAY BE REPRODUCED IN ANY FASHION OR MEDIUM WITHOUT THE EXPRESS WRITTEN APPROVAL OF THE LANDSCAPE ARCHITECT. THE PROPER ELECTRONIC TRANSFER OF DATA SHALL BE THE USER'S RESPONSIBILITY WITHOUT LIABILITY TO THE LANDSCAPE ARCHITECT.

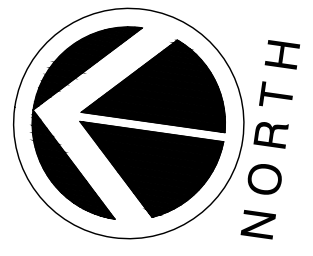
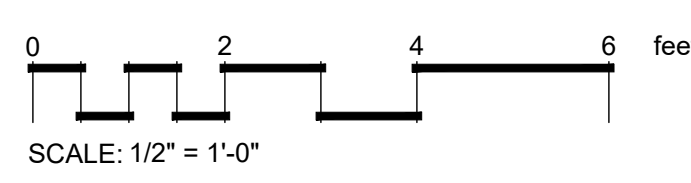
OWNER SHALL ASSUME RESPONSIBILITY FOR COMPLIANCE WITH ALL EASEMENTS, SETBACK REQUIREMENTS AND PROPERTY LINES. OWNER SHALL ACQUIRE ALL NECESSARY PERMITS REQUIRED TO PERFORM WORK SHOWN ON PLANS. BASE INFORMATION HAS BEEN PROVIDED BY THE OWNER. MICHAEL ARNONE LANDSCAPE ARCHITECTURE ASSUMES NO LIABILITY FOR THE ACCURACY OF SAID PROPERTY LINE BOUNDARIES, FENCE LINES OR PROPERTY CORNERS.

REVISIONS	
7.12.23	correct location of deck fascia board

OUTDOOR DINING DECK PLAN

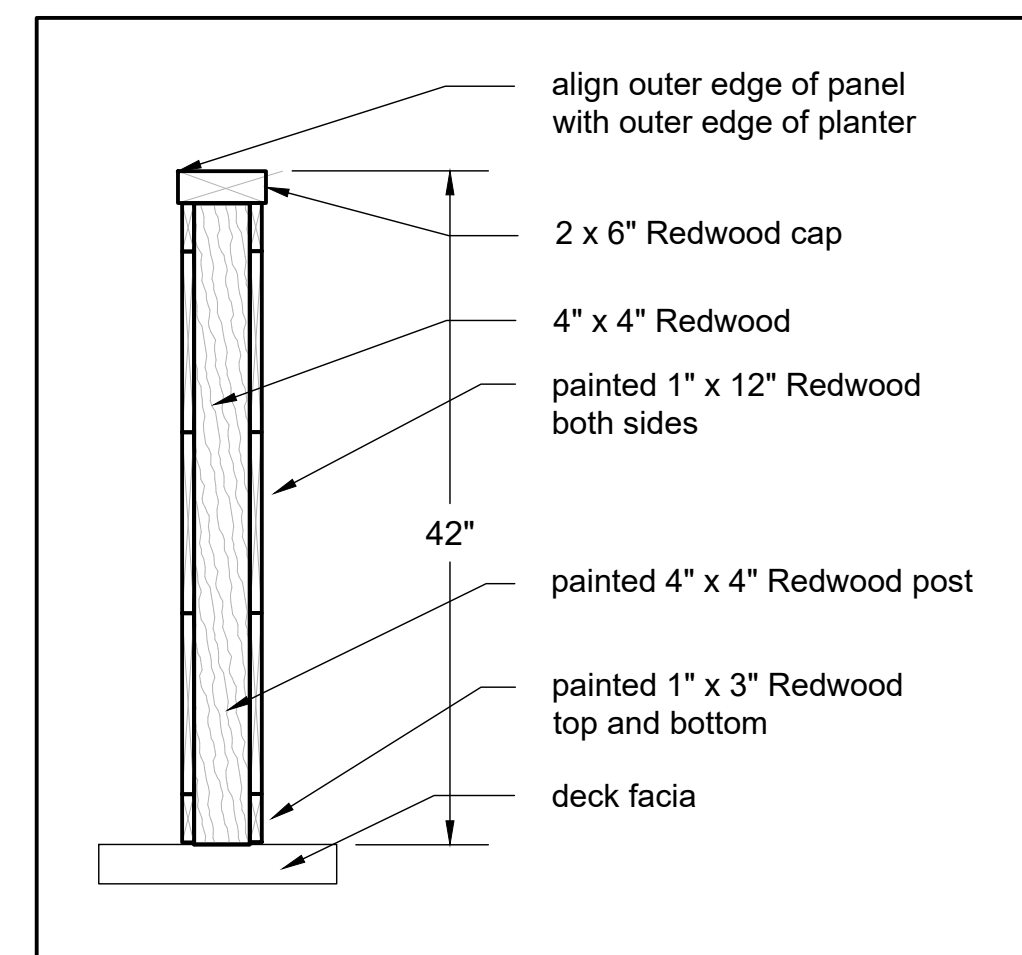
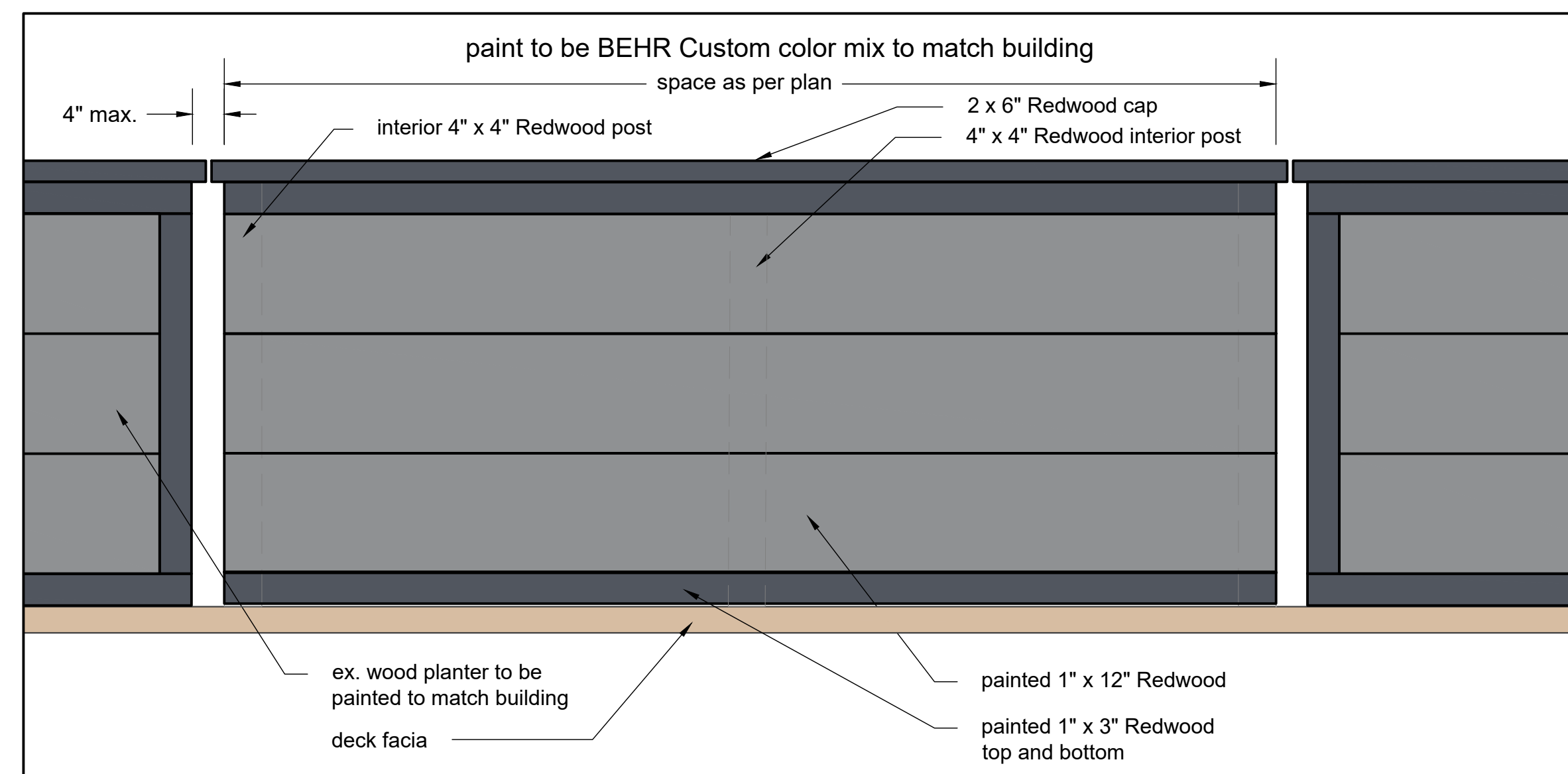
JOB NO. 202223
SCALE as noted
DRAWN MA
DATE 7.12.23

SHEET
L-1.1



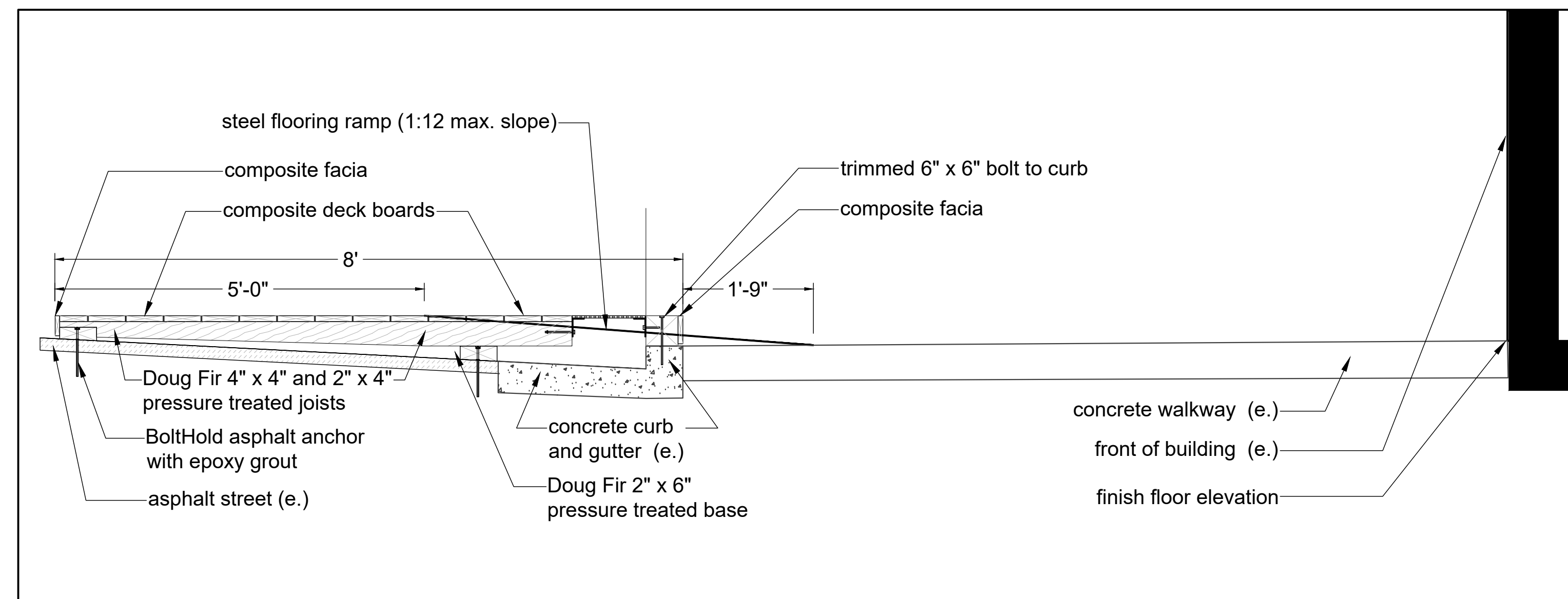
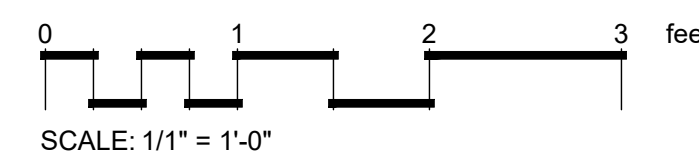
DECK PLAN
scale: 1/2" = 1' - 0"

ENGLISH ALES
111 CAPITOLA AVENUE
CAPITOLA, CALIFORNIA

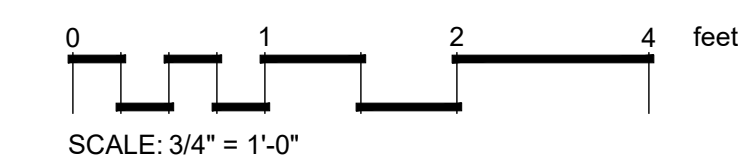


WOOD PANEL SECTION
scale: 1" = 1' - 0"

WOOD PANEL BETWEEN PLANTERS
scale: 1" = 1' - 0"



SECTION VIEW
scale: 3/4" = 1' - 0"

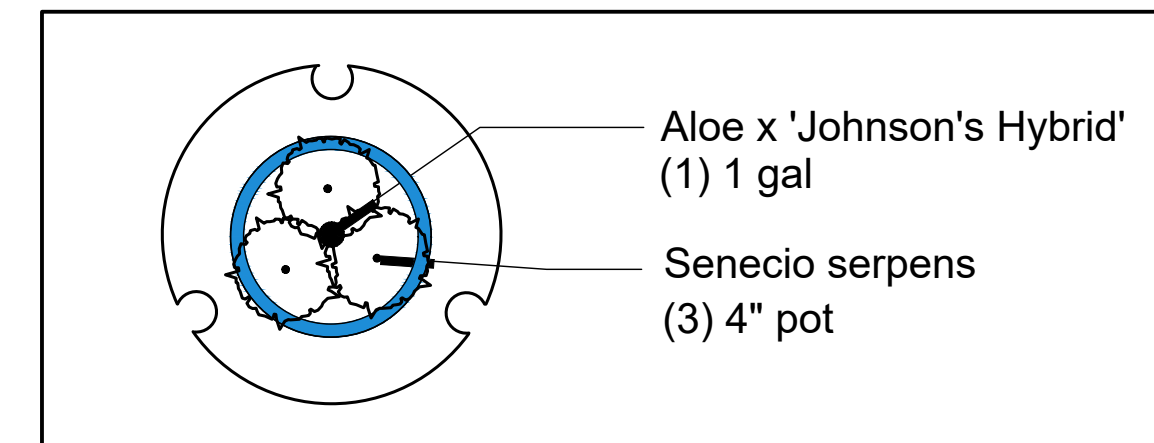
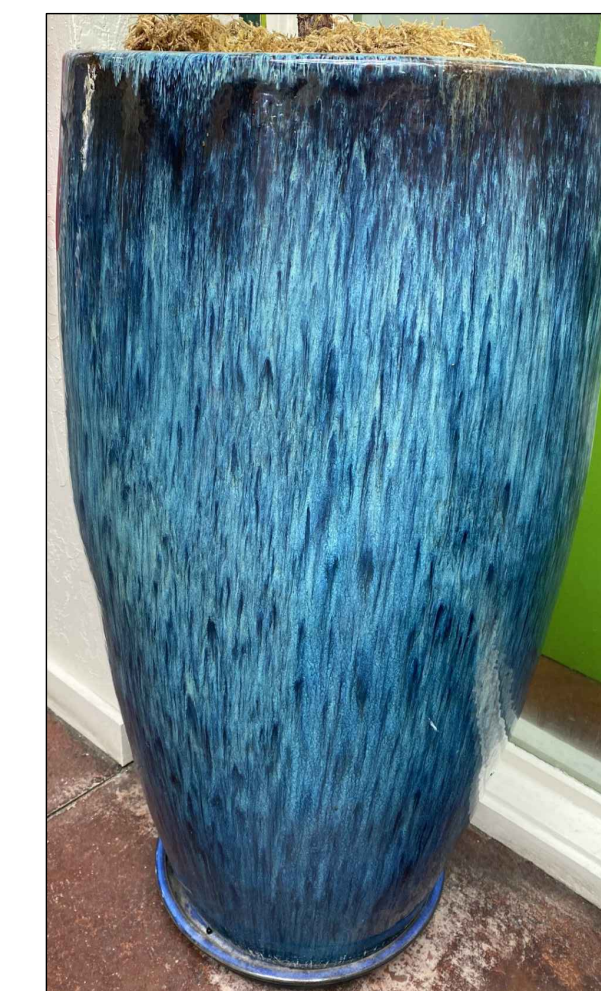


ceramic pot
approx. 36" high x 16" diameter
color to be selected

Container Planting



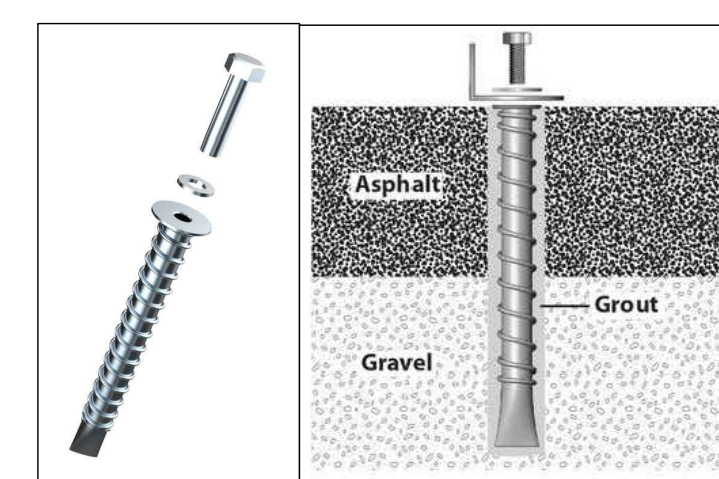
Senecio serpens
Aloe 'Johnson Hybrid'



NOTES: MINIMUM LAG PENETRATION DIMENSION, REFER TO REQUIREMENTS FOR LAG SCREW PENETRATION INTO SOLID LUMBER. LUMBER ASSUMED TO HAVE A MINIMUM 0.43 SPECIFIC GRAVITY (i.e. HEM-FIR). WOOD DECK BOARDS MUST BE PROPERLY ATTACHED TO STRUCTURE TO ACCOUNT FOR A PORTION OF THE LAG SCREW PENETRATION REQUIREMENT. IF USING COMPOSITE MATERIAL AS DECKING, DECK BOARDS WILL NOT CONTRIBUTE TO PENETRATION REQUIREMENT. LAG SCREW LENGTH AND BLOCKING MUST BE ADJUSTED TO ACCOUNT FOR ADDITIONAL LENGTH, AS NECESSARY.	RESIDENTIAL (MAX 6' OC)	
	INTERIOR	EXTERIOR
<p>VINYL CAP 3/8" Ø LAG SCREW (REFER TO CHART FOR LENGTH REQUIREMENTS) CAP WASHER, PART #7063 WOOD BLOCKING RIM JOIST</p>	36"	36"
	38"-42"	38"-42"
	42"	42"
	<p>3" MIN. LAG PENETRATION 3-1/2" LAG SCREWS, PART #7277</p>	<p>4" MIN. LAG PENETRATION 4-1/2" LAG SCREWS, PART #6565</p>
	<p>3-1/2" MIN. LAG PENETRATION 4-1/2" LAG SCREWS, PART #6565</p>	<p>4-1/2" MIN. LAG PENETRATION 5" LAG SCREWS, PART #7280</p>
	<p>4-1/2" MIN. LAG PENETRATION 5" LAG SCREWS, PART #7280</p>	<p>5-5/8" MIN. LAG PENETRATION 6" LAG SCREWS, PART #7278</p>

DesignRail® Reference Drawing:
Base Mount with Lag Screws

DATE: 06/10/15
PAGE: 1 OF 1
REV:
BY: BWA
CHK:
feeney
2603 Union St., Oakland, CA 94607
P: 800-888-2418 F: 510-883-9484
www.feeneyinc.com



asphalt anchor and grout



Simpson FB24Z



steel flooring plate
1/4" x 12" x 4"



Castle Gate AZEK

TimberTech decking examples

© Michael Arnone Landscape Architect - 2023
THESE DRAWINGS ARE INSTRUMENTS OF SERVICE, ISSUED FOR A ONE-TIME SINGLE USE BY THE OWNER. THE ENTIRE CONTENTS OF THESE DRAWINGS IS COPYRIGHT © MICHAEL ARNONE LANDSCAPE ARCHITECT. LANDSCAPE ARCHITECT RETAINS ALL RIGHTS AND TITLE. NO PART MAY BE REPRODUCED IN ANY FASHION OR MEDIUM WITHOUT THE EXPRESS WRITTEN APPROVAL OF THE LANDSCAPE ARCHITECT. THE PROPER ELECTRONIC TRANSFER OF DATA SHALL BE THE USER'S RESPONSIBILITY WITHOUT LIABILITY TO THE LANDSCAPE ARCHITECT.
OWNER SHALL ASSUME RESPONSIBILITY FOR COMPLIANCE WITH ALL EASEMENTS, SETBACK REQUIREMENTS AND PROPERTY LINES. OWNER SHALL ACQUIRE ALL NECESSARY PERMITS REQUIRED TO PERFORM WORK SHOWN ON PLANS. BASE INFORMATION HAS BEEN PROVIDED BY THE OWNER. MICHAEL ARNONE LANDSCAPE ARCHITECTURE ASSUMES NO LIABILITY FOR THE ACCURACY OF SAID PROPERTY LINE BOUNDARIES, FENCE LINES OR PROPERTY CORNERS.

REVISIONS

DETAILS, MATERIALS,
ELEVATIONS &
CONTAINER PLANTING

JOB NO. 202223
SCALE as noted
DRAWN MA
DATE 7.12.23

SHEET

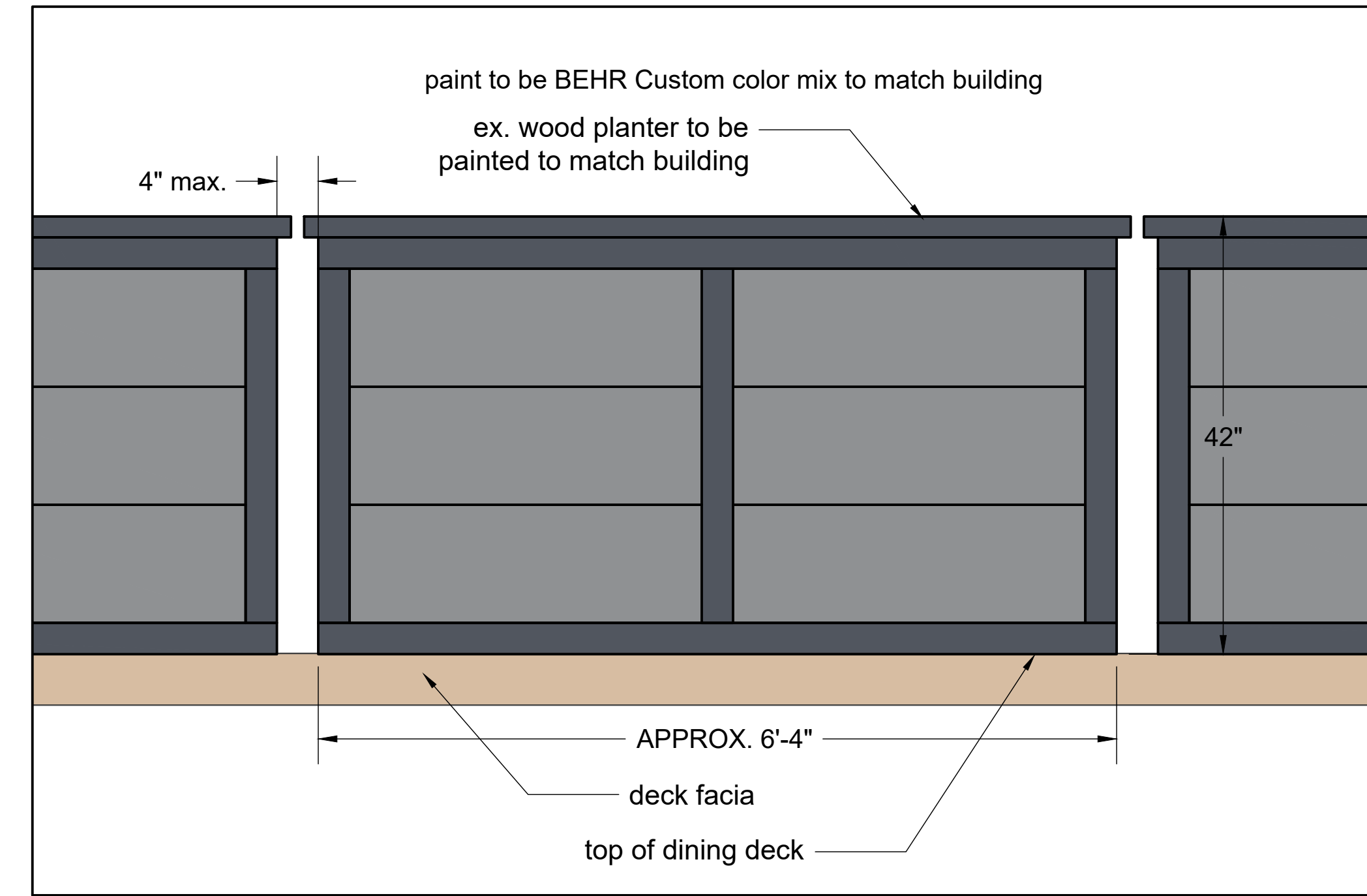
L-1.2



(4) Costway 9' Patio umbrella with solar lights in RED



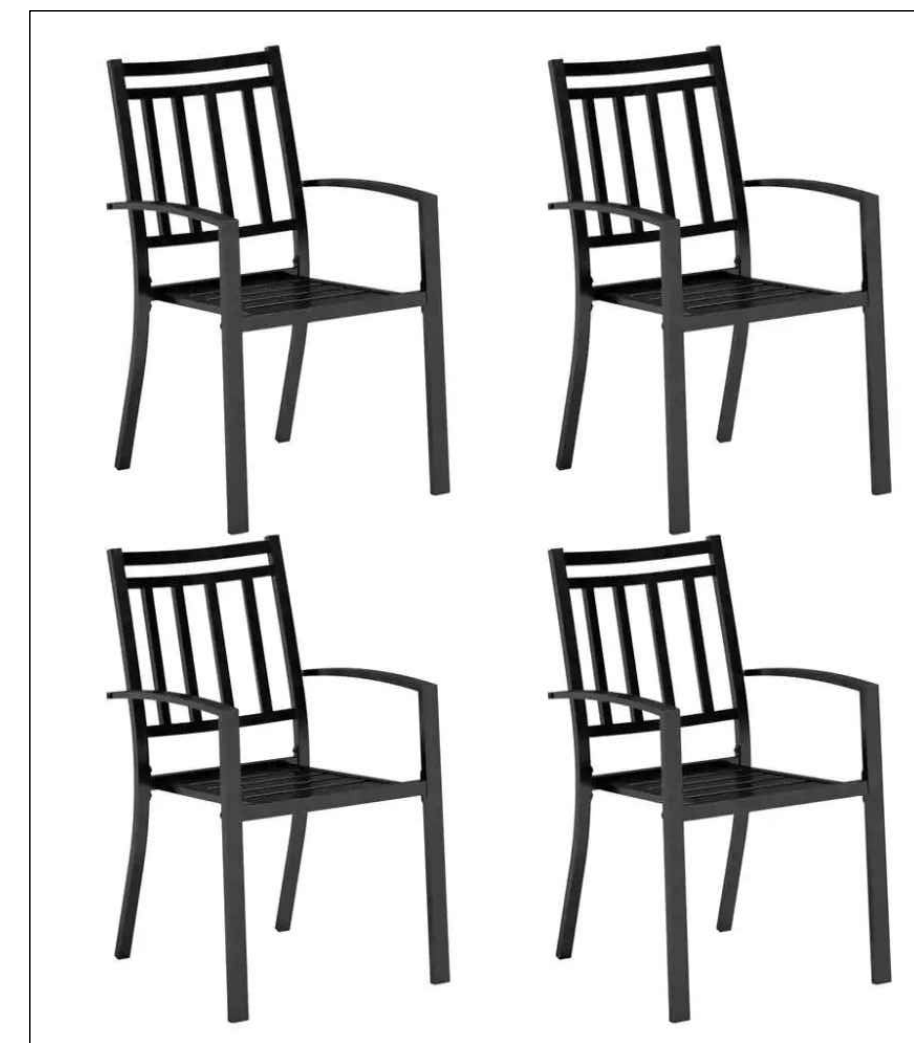
75lb. concrete umbrella base with metal hood



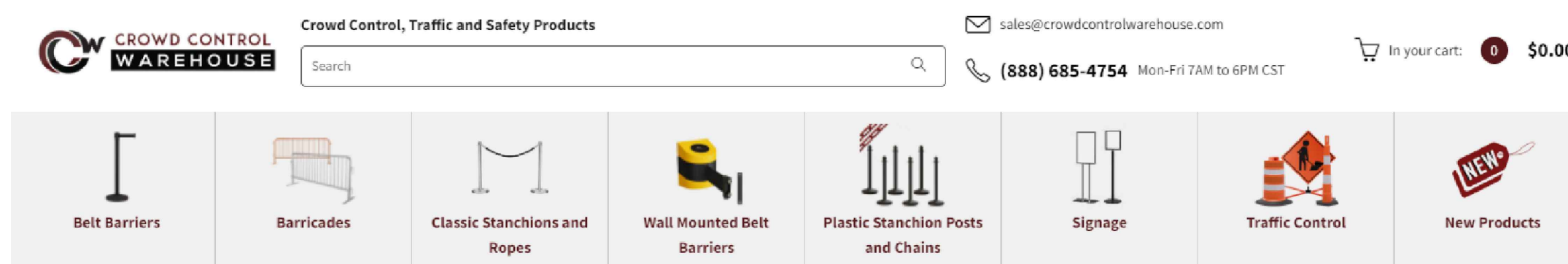
EXISTING WOOD PLANTER
scale: 1" = 1' - 0"



(6) Black Round Cast Aluminum Outdoor Dining Table made by Sunnydaze



(12) Black Stackable Stripe Metal Patio Outdoor Dining Chair made by Phi Villa



Home / Classic Stanchions / Flat Top Rope Stanchion with Sloped Base - Montour Line CLine

Flat Top Rope Stanchion with Sloped Base - Montour Line CLine

SKU CCW-01-018-00161 ★★★★★ 2 reviews

- Flat Top Stanchion
- Sloped Base
- Multiple finishes available
- Ropes sold separately

Post Color: BLACK

Optional Tapped Top (Needed to Accept Sign frames): NO

In Stock

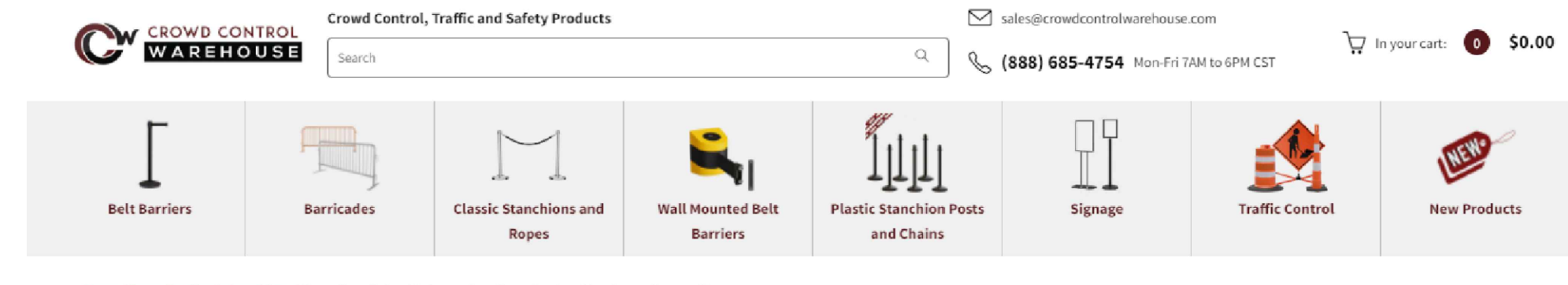
Quantity: 1

\$65.00 ~~\$65.00~~ **\$48.00** 27% OFF PRICE MATCH GUARANTEE

Add to Cart

Request A Quote

Black metal stanchion



Home / Ropes for Classic Stanchions / Heavy-Duty Twisted Polypropylene Ropes for Stanchion Posts - Montour Line

Heavy-Duty Twisted Polypropylene Ropes for Stanchion Posts - Montour Line

SKU CCW-01-018-00410 ★★★★★ 6 reviews

- Heavy Duty Polypropylene Rope
- Multiple rope lengths available
- Choose color to suit your style
- Variety of rope end finishes

Rope Length: 4 FT.

Rope Color: BLACK

End Color: BLACK

In Stock

Quantity: 1

\$65.00 ~~\$65.00~~ **\$50.00** 24% OFF PRICE MATCH GUARANTEE

Add to Cart

Request A Quote

Black rope



(2) Fire Sense Commercial Series 46,000 BTU Propane Gas Patio Heater With Electronic Ignition - Stainless Steel - 1775

© Michael Arnone Landscape Architect - 2023
THESE DRAWINGS ARE INSTRUMENTS OF SERVICE, ISSUED FOR A ONE-TIME SINGLE USE BY THE OWNER. THE ENTIRE CONTENTS OF THESE DRAWINGS IS COPYRIGHT © MICHAEL ARNONE LANDSCAPE ARCHITECT. LANDSCAPE ARCHITECT RETAINS ALL RIGHTS AND TITLE. NO PART MAY BE REPRODUCED IN ANY FASHION OR MEDIUM WITHOUT THE EXPRESS WRITTEN APPROVAL OF THE LANDSCAPE ARCHITECT. THE PROPER ELECTRONIC TRANSFER OF DATA SHALL BE THE USER'S RESPONSIBILITY WITHOUT LIABILITY TO THE LANDSCAPE ARCHITECT.
OWNER SHALL ASSUME RESPONSIBILITY FOR COMPLIANCE WITH ALL EASEMENTS, SETBACK REQUIREMENTS AND PROPERTY LINES. OWNER SHALL ACQUIRE ALL NECESSARY PERMITS REQUIRED TO PERFORM WORK SHOWN ON PLANS. BASE INFORMATION HAS BEEN PROVIDED BY THE OWNER. MICHAEL ARNONE LANDSCAPE ARCHITECTURE ASSUMES NO LIABILITY FOR THE ACCURACY OF SAID PROPERTY LINE BOUNDARIES, FENCE LINES OR PROPERTY CORNERS.

REVISIONS

FURNISHINGS & PRODUCT CUT SHEETS

JOB NO. 202223
SCALE as noted
DRAWN MA
DATE 7.12.23

SHEET
L-1.3