

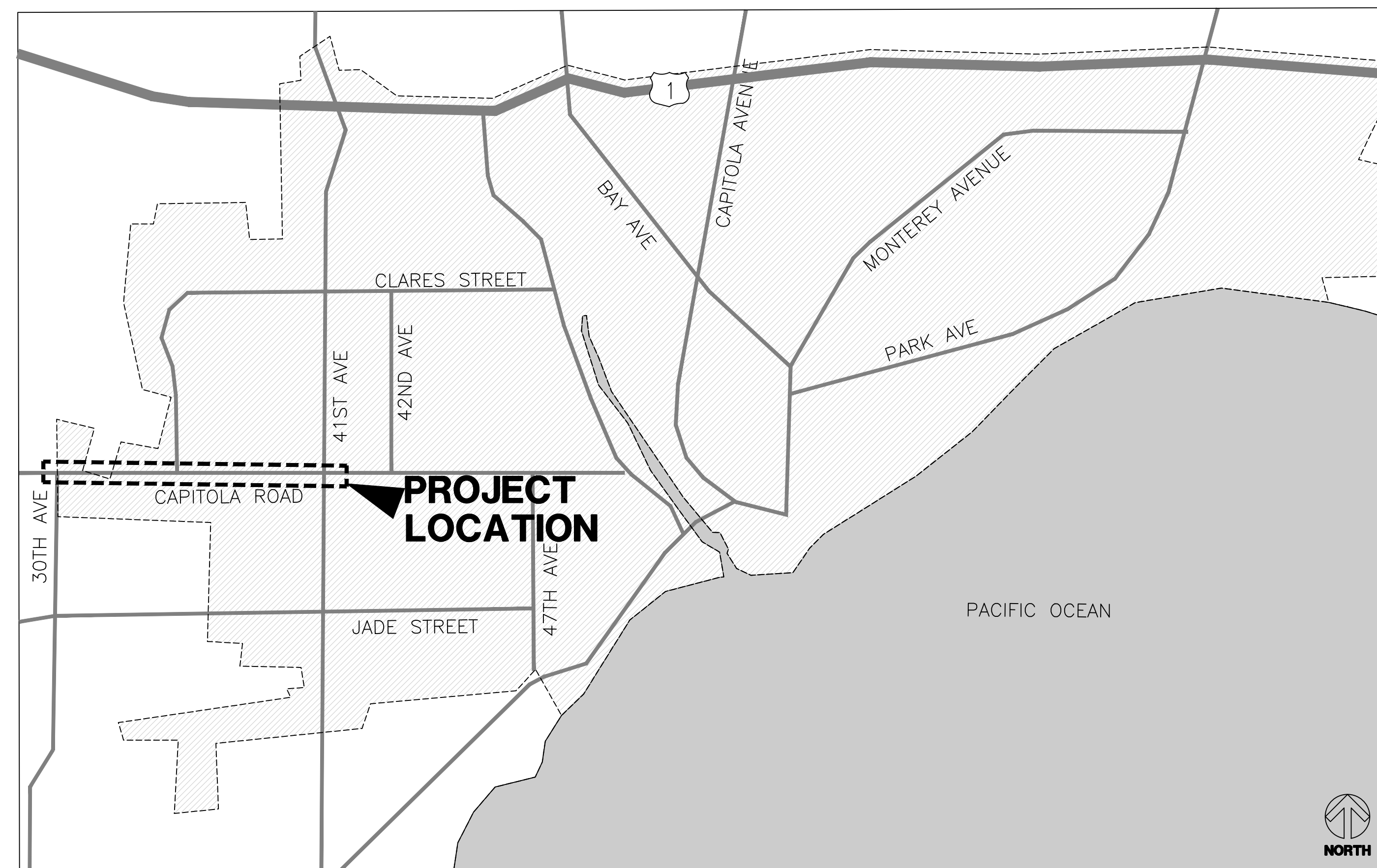
CITY OF CAPITOLA

CAPITOLA ROAD PAVEMENT REHABILITATION PROJECT

DPW PROJECT NO. 220257

GENERAL NOTES:

1. CONTRACTOR IS RESPONSIBLE FOR OBTAINING ALL NECESSARY PERMITS TO COMPLETE WORK.
2. FOR AREAS TO BE REMOVED & REPLACED, CONTRACTOR SHALL ONLY REMOVE MATERIAL QUANTITIES THAT CAN BE REPLACED DURING THE SAME WORK DAY.
3. CONTRACTOR SHALL BE RESPONSIBLE FOR REPAIRING DAMAGE TO ANY PUBLIC OR PRIVATE UTILITIES AND/OR STRUCTURES SHOWN OR NOT SHOWN ON THESE PLANS. CONTRACTOR IS REQUIRED TO TAKE DUE PRECAUTIONARY MEASURES TO PROTECT UTILITIES OR STRUCTURES FOUND AT THE SITE. IT SHALL BE THE CONTRACTOR'S RESPONSIBILITY TO NOTIFY THE OWNERS OF THE UTILITIES OR STRUCTURES BEFORE STARTING WORK (2 BUSINESS DAYS ADVANCE NOTICE REQUIRED).
4. CONTRACTOR SHALL CONTACT UNDERGROUND SERVICE ALERT AT 811 AT LEAST TWO (2) WORKING DAYS PRIOR TO THE COMMENCEMENT OF CONSTRUCTION TO ALLOW UTILITY OWNERS TO MARK THE LOCATION OF THEIR RESPECTIVE UNDERGROUND FACILITIES/UTILITIES, PUBLIC OR PRIVATE, SHOWN OR NOT SHOWN ON THESE PLANS.
5. CONTRACTOR SHALL COMPLY WITH ALL APPLICABLE DIVISION OF INDUSTRIAL RELATIONS (CAL-OSHA) SAFETY STANDARDS, IN ACCORDANCE WITH SECTION 7-10.4 OF THE SSPWC. IF REQUESTED BY THE INSPECTOR, THE CONTRACTOR SHALL PROVIDE PROOF OF A PERMIT FROM CAL-OSHA.
6. PRIOR TO COMMENCEMENT OF WORK, EXISTING GRASS AND WEEDS IN THE PROJECT ROADWAYS SHALL BE DESTROYED BY APPLICATION OF WEED KILLERS. (SEE ROADWAY PREPARATION IN TECHNICAL SPECIFICATIONS.)
7. CONTRACTOR IS RESPONSIBLE FOR TRIMMING ALL VEGETATION WITHIN WORK ZONE THAT WILL INTERFERE WITH WORK. CONTRACTOR SHALL REMOVE AND DISPOSE OF ALL DEBRIS.
8. CONTRACTOR SHALL DISPOSE OF ALL CONSTRUCTION WASTE IN A LEGAL MANNER.
9. STATIONING SHOWN ON PLANS IS FOR REFERENCE ONLY.



LOCATION MAP
NTS

SHEET INDEX	
STREET NAME	SHEETS
TITLE SHEET	1
CAPITOLA ROAD (30TH STREET TO 41ST STREET)	2
STRIPING PLANS	3

P:\R\Z\SHARED\DRIVE\ACTIVE PROJECTS\CAPITOLA CITY OF 220257\TASK 01 - PRELIMINARY ENGINEERING\DRAWINGS\220257_SITEL01_CAPITOLA ROAD.DWG Pld Date: 7/20/2023 9:56 AM

Pavement Engineering Inc.
You can ride on our reputation



Corporate Office:
3485 Sacramento Drive, Suite A
San Luis Obispo, CA 93401
805.781.2265

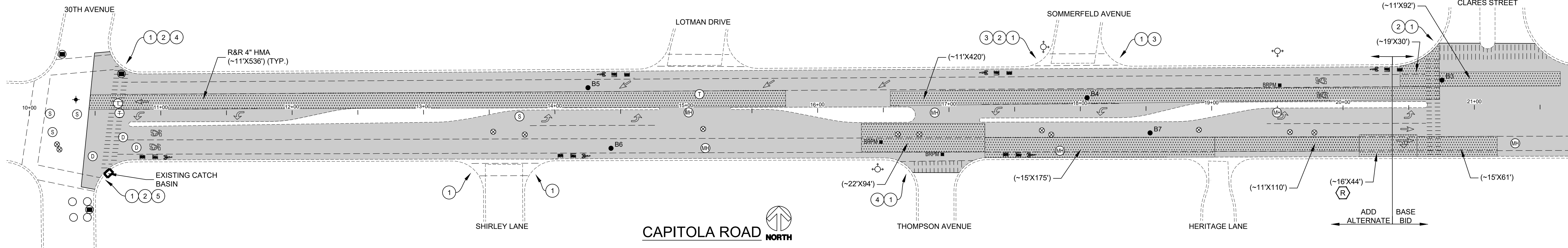
CITY OF CAPITOLA
CAPITOLA ROAD PAVEMENT REHABILITATION PROJECT

TITLE SHEET

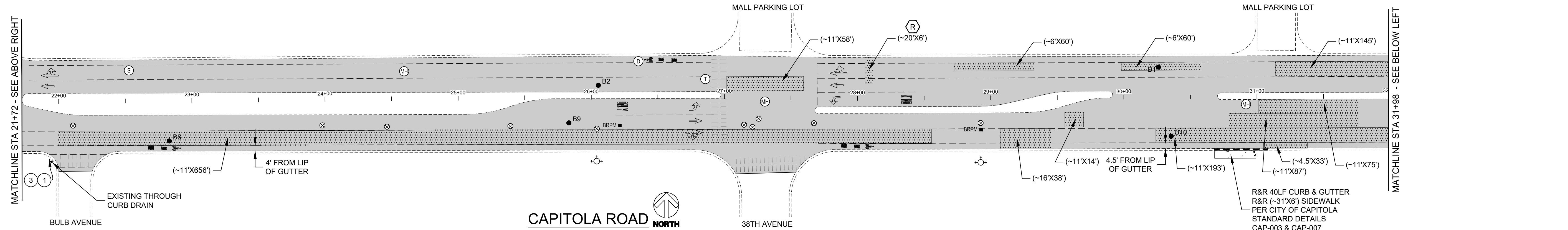
DRAWN BY:	CM
PROJECT NUMBER:	220257
SCALE:	1" = 40'
VERIFY SCALE	
DATE:	JULY 2023
SHEET NUMBER:	1 OF 3



P:\R\2\SHARED\DR\PROJECTS\CAPITOLA CITY OF 220257\TASK 01 - PRELIMINARY ENGINEERING\DRAWINGS\220257_SIT01_CAPITOLA ROAD.DWG Pkg Date: 7/20/2023 9:56 AM

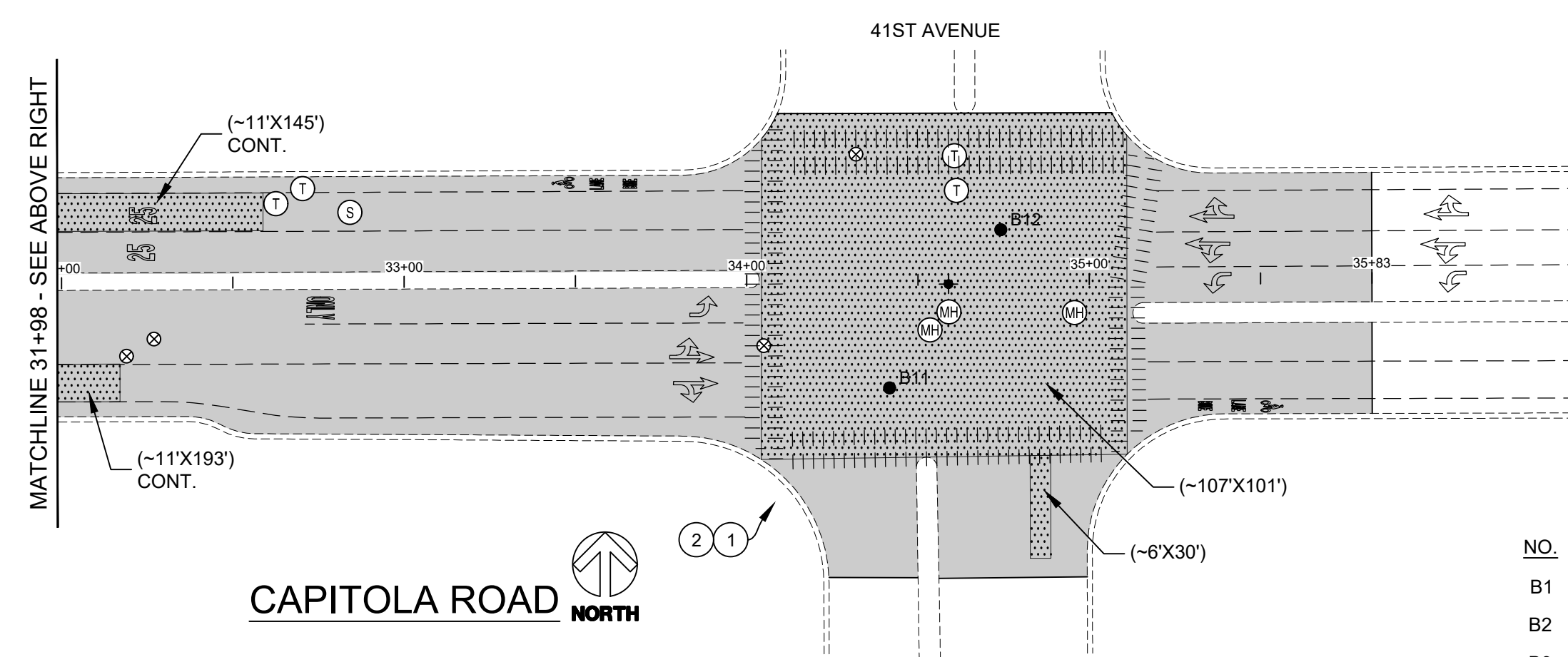


MATCHLINE STA 21+72 - SEE BELOW LEFT

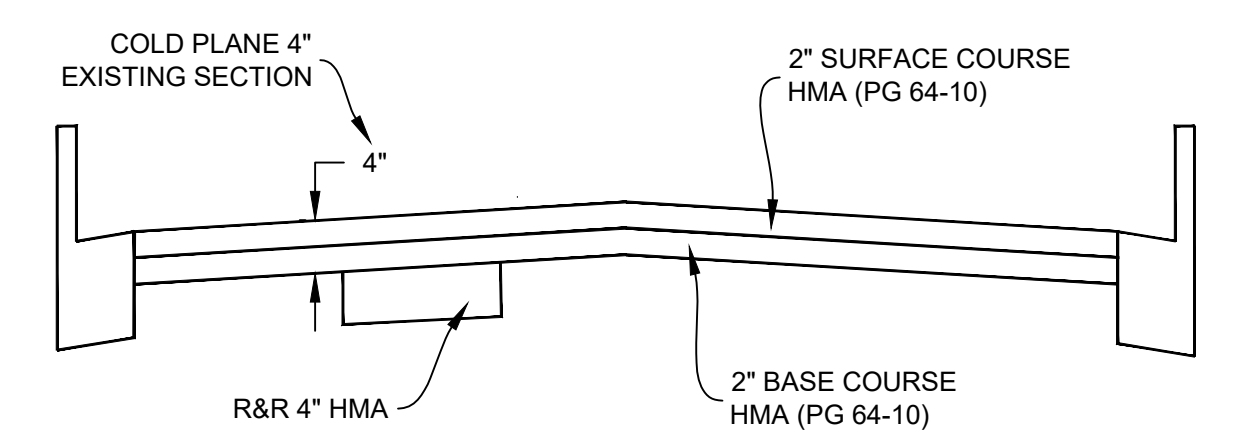


MATCHLINE STA 21+72 - SEE ABOVE RIGHT

MATCHLINE STA 31+98 - SEE BELOW LEFT

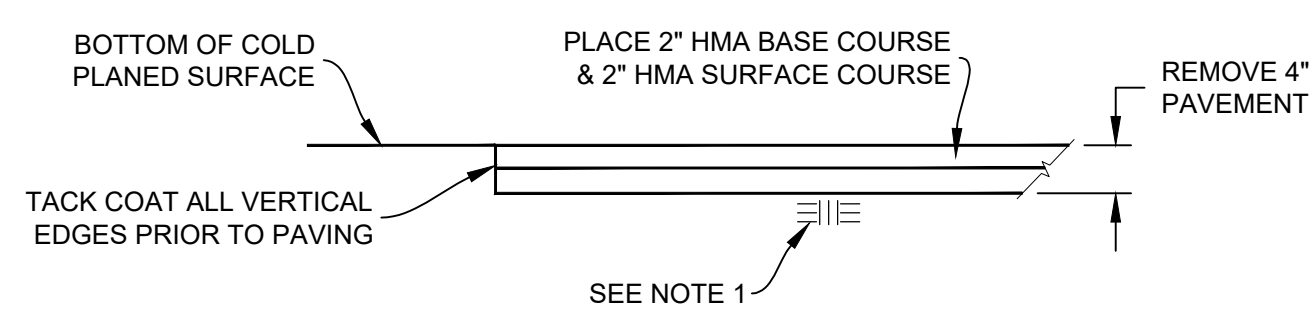


MATCHLINE 31+98 - SEE ABOVE RIGHT



TYPICAL SECTION NO. 1
NTS

NOTES:
1. RECOMPACT LOOSENED MATERIAL AT SURFACE. IF CONTRACTOR DISTURBS MORE THAN 1-1/2\"/>



REMOVE & REPLACE 4\"/>

LEGEND

- REMOVE & REPLACE 4" HMA
- COLD PLANE & REPLACE 4" HMA
- R&R PCC SIDEWALK
- R&R PCC CURB & GUTTER
- BORING LOCATION
- LOOP DETECTOR COVER
- TRAFFIC LOOP
- WATER VALVE
- MANHOLE
- STORM DRAIN MANHOLE
- SANITARY SEWER MANHOLE
- TELECOMMUNICATIONS MANHOLE
- BLUE RETRORREFLECTIVE PAVEMENT MARKER
- FIRE HYDRANT
- SURVEY MONUMENT
- PRUNE & REMOVE TREE ROOTS
- REMOVE & REPLACE

BORING LOG

NO.	HMA	AB	R-VALUE	FABRIC (Y/N)
B1	7"	8"	11	Y
B2	7-1/2"	13"	-	N
B3	12"	7"	11	Y
B4	8"	12"	-	N
B5	11"	13"	12	Y
B6	10-1/2"	4"	-	N
B7	7"	12"	-	N
B8	7"	13"	-	N
B9	6-1/4"	7"	-	N
B10	6-1/2"	13"	-	Y
B11	8-1/2"	12"	12	N
B12	6"	10"	-	N

*CORING DATA IS FOR INFORMATION ONLY. EXISTING SECTION MAY VARY FROM SECTION(S) FOUND AT CORING LOCATION(S). FABRIC MAY BE PRESENT IN SECTIONS EVEN IF NOT FOUND AT CORING LOCATION(S).

STRIPING & UTILITY NOTES:
1. STRIPING AS SHOWN REPRESENTS EXISTING AND IS SUBJECT TO CHANGE. SEE SHEET 3 FOR STRIPING PLANS.
2. LOWER ALL UTILITIES WITHIN LIMIT OF WORK PRIOR TO COLD PLANE.
3. ADJUST ALL UTILITIES TO FINISH GRADE AFTER PLACEMENT OF SURFACE COURSE

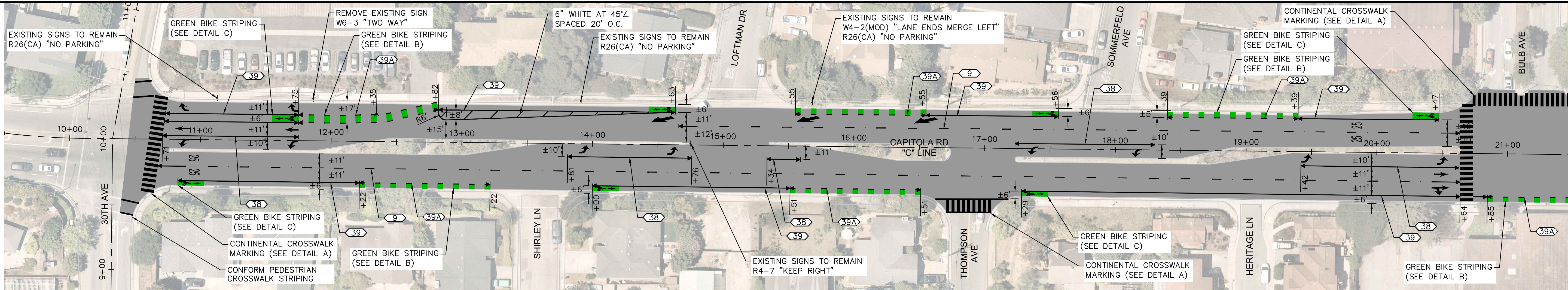
CONSTRUCTION NOTES:
1. CONSTRUCT CASE C CURB RAMP PER CALTRANS 2022 STANDARD PLAN A88A.
2. PROTECT EXISTING UTILITY/TRAFFIC SIGNAL POLE IN PLACE.
3. ADJUST UTILITY COVER TO FINISH GRADE.
5. PROTECT EXISTING WOODEN RETAINING WALL/FENCE IN PLACE.
6. TRIM HEDGES PRIOR TO CONSTRUCTION OF CURB RAMP.

Pavement Engineering Inc.
You can ride on our reputation
Corporate Office:
3485 Sacramento Drive, Suite A
San Luis Obispo, CA 93401
805.781.2265

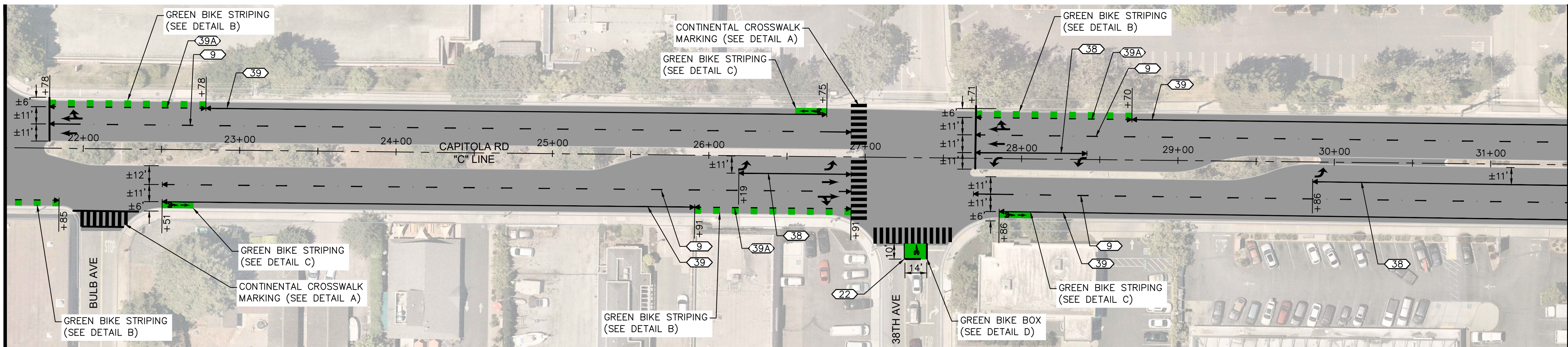
CITY OF CAPITOLA
CAPITOLA ROAD PAVEMENT REHABILITATION PROJECT
CAPITOLA ROAD
30TH AVENUE TO 41ST AVENUE

DRAWN BY: **CM**
PROJECT NUMBER: **220257**
SCALE: **1"= 40'**
VERIFY SCALE
BAR REPRESENTS
1" ON ORIGINAL
DATE: **JULY 2023**
SHEET NUMBER:

This document, together with the concepts and designs presented herein, is intended only for the specific purpose and client for which it was prepared. Reuse of any improper reference on this document without written authorization and adaptation by Kimley-Horn and Associates, Inc. shall be without liability to Kimley-Horn and Associates, Inc.



MATCH LINE 21+50 SEE BELOW



MATCH LINE 21+50 SEE ABOVE

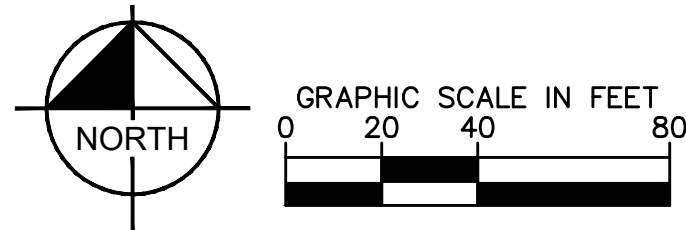
MATCH LINE 31+50 SEE SHEET SS-2

GENERAL SIGNING AND STRIPING NOTES

1. ROADWAY ALIGNMENT SHOWN FOR PAVEMENT DELINEATION STATIONING GENERATED WITHOUT EXISTING MONUMENT OR BENCHMARK BASIS. ENGINEER ON SITE TO SHALL VERIFY STRIPING LOCATION PRIOR TO INSTALLATION.
2. ALL EXISTING SIGNS SHALL BE PROTECTED IN PLACE UNLESS SPECIFIED FOR REMOVAL OR RELOCATION.
3. ALL EXISTING SIGNS SPECIFIED FOR REMOVAL SHALL NOT BE REMOVED UNTIL NO LONGER PERTINENT TO TRAFFIC CONTROL.
4. ALL EXISTING PAVEMENT DELINEATION CONFLICTING WITH PROPOSED STRIPING SHALL BE REMOVED PRIOR TO NEW STRIPING INSTALLATION.
5. ALL PAVEMENT DELINEATION MUST BE IN ACCORDANCE WITH THE CURRENT VERSION OF THE CALIFORNIA MUTCD AND CALTRANS STANDARD PLANS.
6. ALL STRIPING DIMENSIONS SHOWN ARE MEASURED FROM STRIPE TO STRIPE OR TO TOP OF CURB TO STRIPE, WHICHEVER SCENARIO IS CLOSER.

LEGEND

- EXISTING SIGN
- PROPOSED SIGN
- <XX> EXISTING STRIPING DETAIL
- <XX> PROPOSED STRIPING DETAIL
- ▶ STRIPING CHANGE
- ▶ STRIPING LIMIT
- △ ANGLE POINT
- PM PAVEMENT MARKING



No.	REVISIONS	DATE	BY

Kimley»Horn

© 2022 KIMLEY-HORN AND ASSOCIATES, INC.
10 S ALMADEN BOULEVARD, SUITE 1250, SAN JOSE, CA 95113
PHONE: 669-800-4130
WWW.KIMLEY-HORN.COM

KHA PROJECT	097763145
DATE	7/18/2023
SCALE	AS SHOWN
DESIGNED BY	DW
DRAWN BY	DW
CHECKED BY	TM/KM

CAPITOLA ROAD PAVEMENT REHAB 2023

PREPARED FOR
CITY OF CAPITOLA
SANTA CRUZ COUNTY CA

--

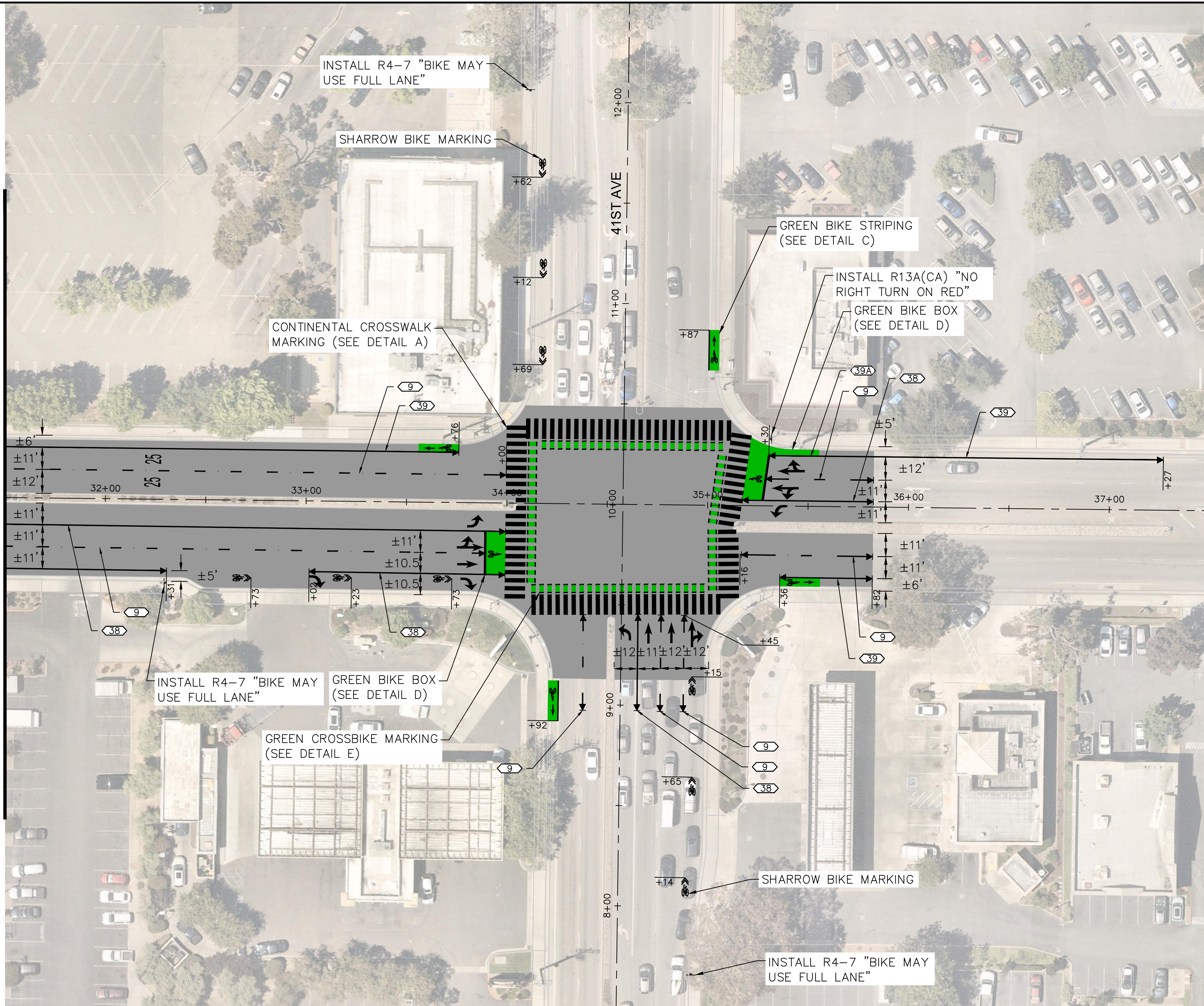
SIGNING AND STRIPING PLAN

SHEET NO. 3
OF XX SHEETS

SS-1

This document, together with the concepts and designs presented herein, is intended only for the specific purpose and client for which it was prepared. Reuse of any improper reliance on this document without written authorization and adaptation by Kimley-Horn and Associates, Inc. shall be without liability to Kimley-Horn and Associates, Inc.

MATCH LINE 31+50 SEE SHEET SS-1

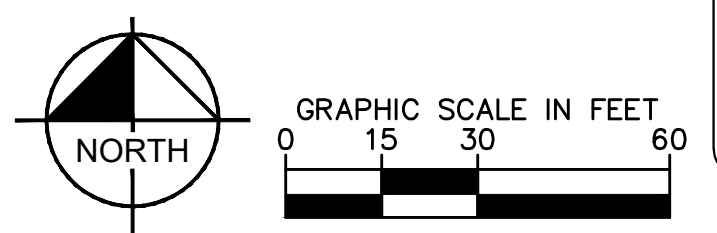


GENERAL SIGNING AND STRIPING NOTES

1. ROADWAY ALIGNMENT SHOWN FOR PAVEMENT DELINEATION STATIONING GENERATED WITHOUT EXISTING MONUMENT OR BENCHMARK BASIS. ENGINEER ON SITE TO SHALL VERIFY STRIPING LOCATION PRIOR TO INSTALLATION.
2. ALL EXISTING SIGNS SHALL BE PROTECTED IN PLACE UNLESS SPECIFIED FOR REMOVAL OR RELOCATION.
3. ALL EXISTING SIGNS SPECIFIED FOR REMOVAL SHALL NOT BE REMOVED UNTIL NO LONGER PERTINENT TO TRAFFIC CONTROL.
4. ALL EXISTING PAVEMENT DELINEATION CONFLICTING WITH PROPOSED STRIPING SHALL BE REMOVED PRIOR TO NEW STRIPING INSTALLATION.
5. ALL PAVEMENT DELINEATION MUST BE IN ACCORDANCE WITH THE CURRENT VERSION OF THE CALIFORNIA MUTCD AND CALTRANS STANDARD PLANS.
6. ALL STRIPING DIMENSIONS SHOWN ARE MEASURED FROM STRIPE TO STRIPE OR TO TOP OF CURB TO STRIPE WHICHEVER SCENARIO IS CLOSER.

LEGEND

- EXISTING SIGN
- PROPOSED SIGN
- EXISTING STRIPING DETAIL
- PROPOSED STRIPING DETAIL
- STRIPING CHANGE
- STRIPING LIMIT
- ANGLE POINT
- PAVEMENT MARKING



No.	REVISIONS	DATE	BY

Kimley»Horn

© 2022 KIMLEY-HORN AND ASSOCIATES, INC.
10 S ALMADEN BOULEVARD, SUITE 1250, SAN JOSE, CA 95113
PHONE: 669-800-4130
WWW.KIMLEY-HORN.COM

KHA PROJECT	097763145
DATE	7/18/2023
SCALE	AS SHOWN
DESIGNED BY	DW
DRAWN BY	DW
CHECKED BY	TM/KM

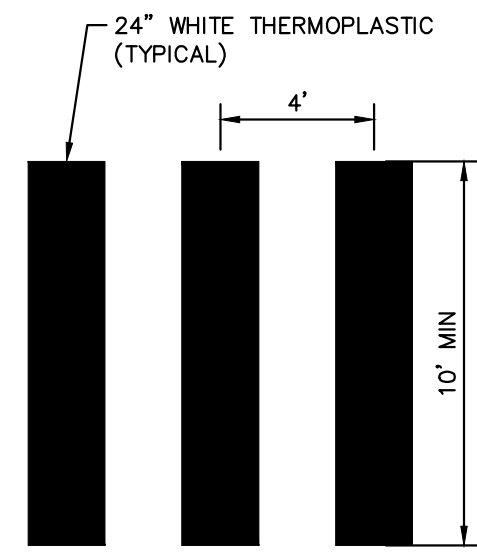
CAPITOLA ROAD PAVEMENT REHAB 2023
PREPARED FOR
CITY OF CAPITOLA
SANTA CRUZ COUNTY CA

SIGNING AND STRIPING PLAN

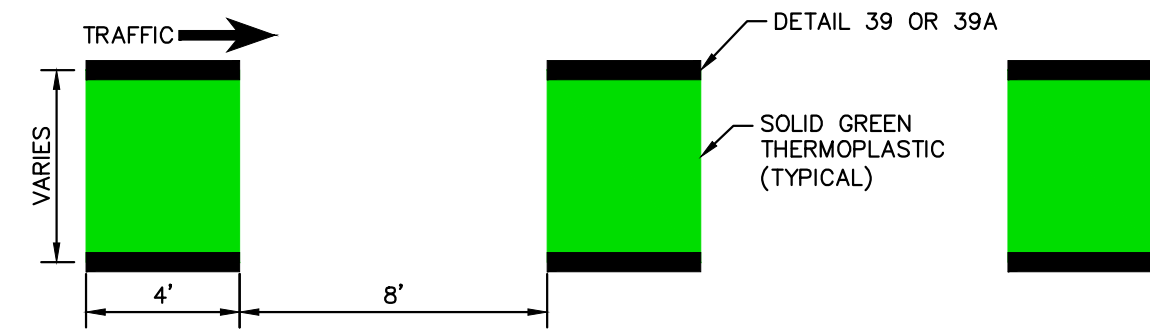
SIGNING AND STRIPING PLAN

SHEET NO. 4
OF XX SHEETS
SS-2

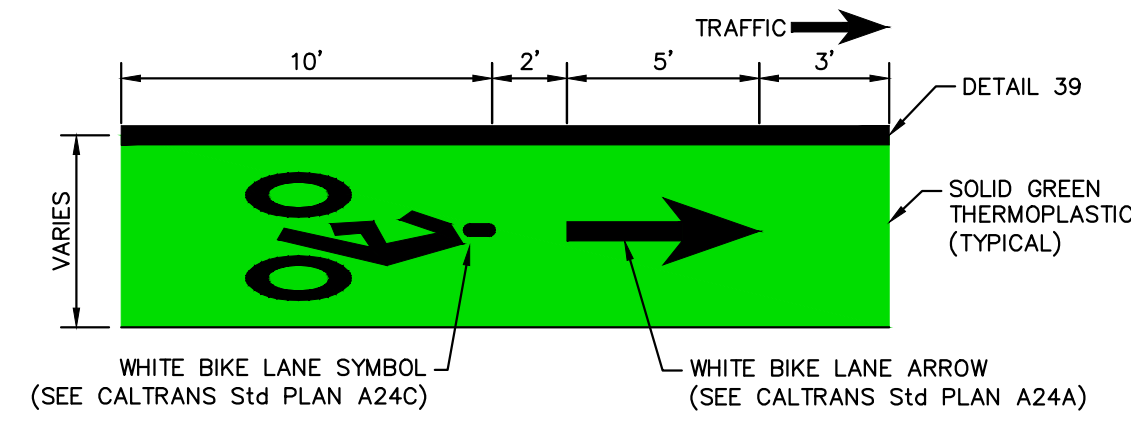
This document, together with the concepts and designs presented herein, is intended only for the specific purpose and client for which it was prepared. Reuse of any improper reliance on this document without written authorization and adaptation by Kimley-Horn and Associates, Inc. shall be without liability to Kimley-Horn and Associates, Inc.



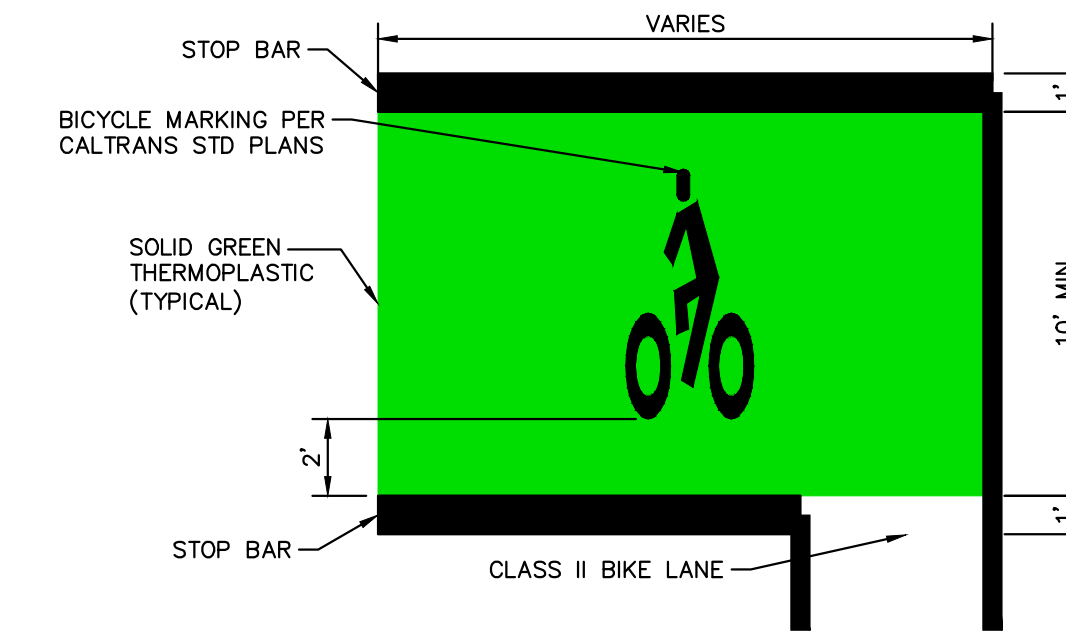
DETAIL A
CONTINENTAL CROSSWALK



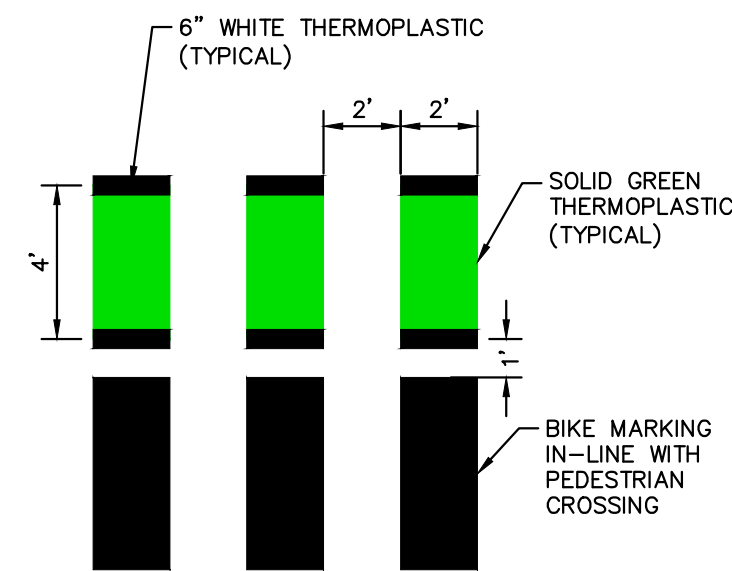
DETAIL B
CLASS II BIKE LANE



DETAIL C
CLASS II BIKE LANE



DETAIL D
BIKE BOX



DETAIL E
"CROSSBIKE" INTERSECTION MARKING



No.	REVISIONS	DATE	BY


 © 2022 KIMLEY-HORN AND ASSOCIATES, INC.
 10 S ALMADEN BOULEVARD, SUITE 1250, SAN JOSE, CA 95113
 PHONE: 669-800-4130
 WWW.KIMLEY-HORN.COM

KHA PROJECT	097763145
DATE	7/18/2023
SCALE	AS SHOWN
DESIGNED BY	DW
DRAWN BY	DW
CHECKED BY	TM/KM

**CAPITOLA ROAD PAVEMENT
REHAB 2023**
 PREPARED FOR
CITY OF CAPITOLA
 SANTA CRUZ COUNTY CA

**SIGNING AND STRIPING
PLAN**

**SIGNING AND STRIPING
PLAN**

SHEET NO. 5
 OF XX SHEETS
SS-3