



Park Avenue Traffic Calming Improvements with Coastal Rail Trail Options

**City Council
February 13, 2025**

Presentation Summary

Park Avenue Project History

Coastal Rail Trail (County/SCCRTC)

Moving Forward





Park Ave Traffic Calming & Rail Trail Background

Park Avenue

- Principal arterial road
- Pacific Coast Bike Route

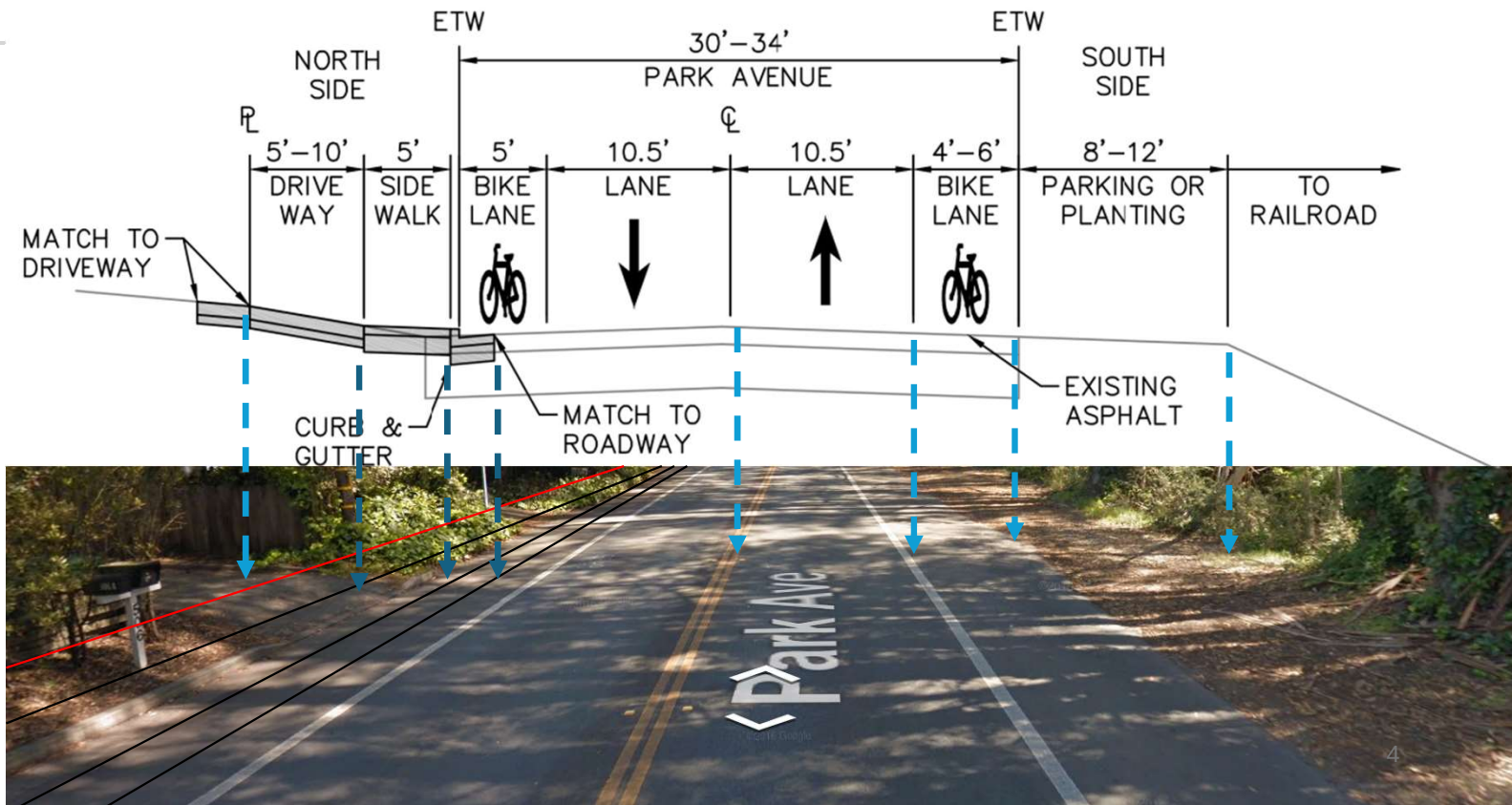
Traffic Investigations

- 2020 Traffic Study: Identified perceived need for speed reduction measures
- September 8, 2022: Initial traffic calming options presented to Council

Rail Trail Project Segments 10 & 11

- Coordinated by County & RTC, traversing the length of Capitola

Park Ave Traffic Calming & Rail Trail Existing Conditions



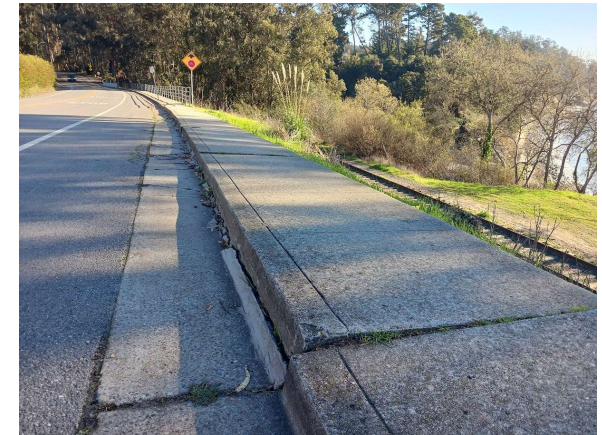

Park Ave Traffic Calming & Rail Trail Existing Conditions



SZS
ENGINEERING

City of Capitola - Pedestrian Facility

Field Date:	9/7/2017	Report Date:	7/18/2018	Barrier #:	8852B
Facility:	City of Capitola				
Location:	Park Ave - S Sidewalk				
Official Responsible:	Brian Van Son, ADA Coordinator				
Facility Function:	Public	Dwg:	N/A		
Barrier Area:	Sidewalks	Remediation:	Required		
Barrier Type:	Abrupt Change in Level - > 1/2"				
Barrier Description:	Change in level greater than 1/2"				
Code References:	CBC 11B-403.4 and 2010 ADAS 403.3				
As Built Description:	2-1/2" lip in sidewalk surface				

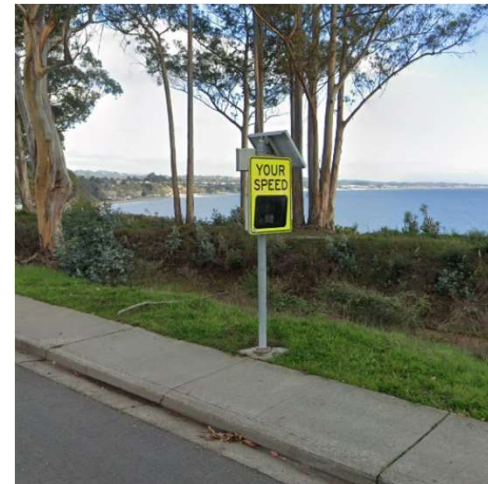


-
- Failing sections of sidewalk
 - Inconsistent bike lane width and conditions
 - Undefined road edge

Park Ave Traffic Calming & Rail Trail

Community Outreach Findings

- Parking Issues: Concerns about reduced availability
- Traffic Safety: Support for speed enforcement & barriers
- Road Diet Support: Support for lane narrowing
- Outreach: Requests for continued engagement
- Traffic Patterns: Concerns about cut-through traffic
- Aesthetic Concerns: Impact on area's natural beauty



Park Ave Traffic Calming & Rail Trail

DRAFT City Traffic Calming Plan



Narrow vehicle lanes to 10.5 feet



Buffered bike lanes



Green bike markings at intersections



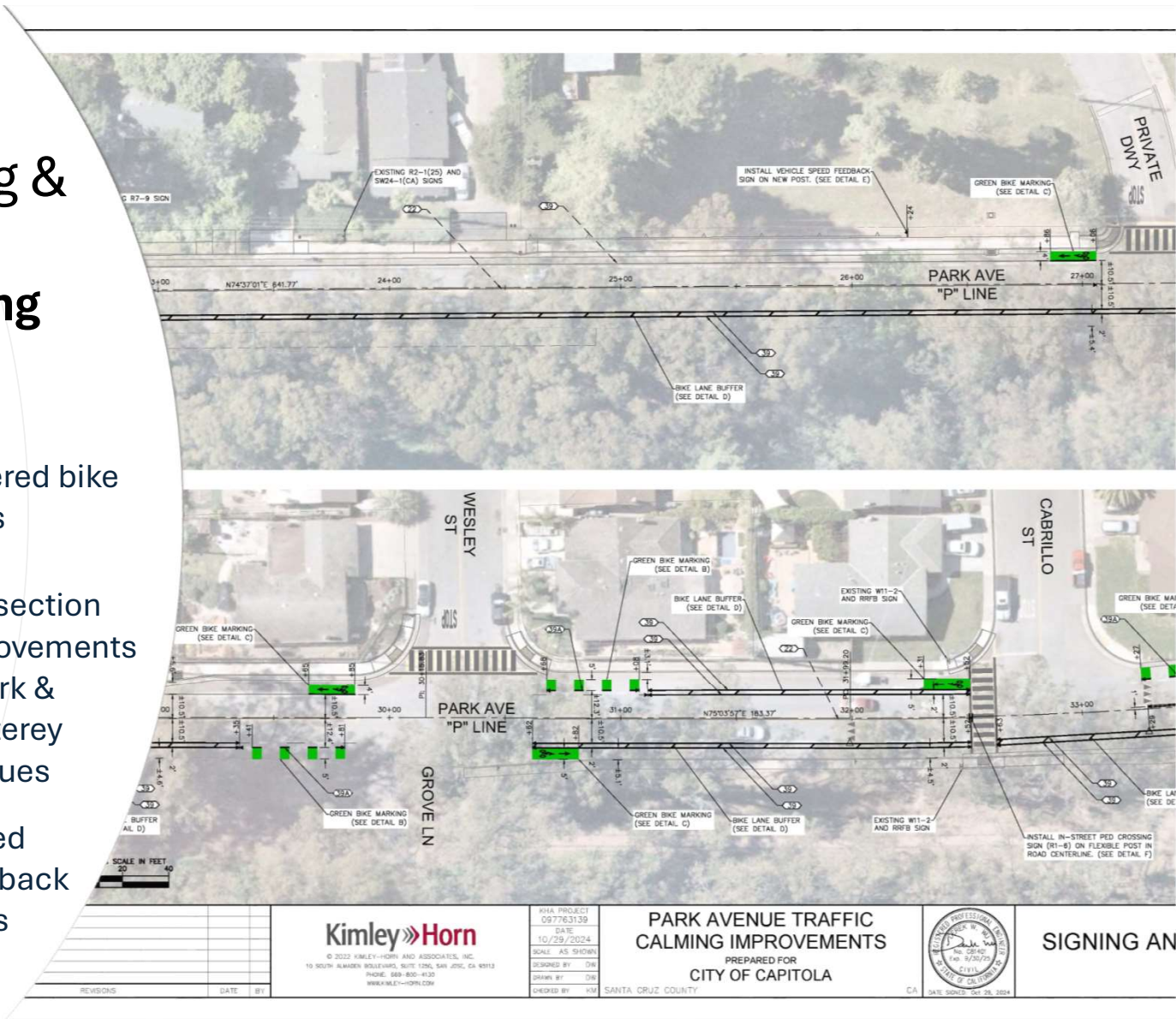
Intersection improvements at Park & Monterey Avenues



Enhanced pedestrian safety measures



Speed feedback signs



COASTAL RAIL TRAIL SEGMENTS 10 AND 11 PROJECT

CAPITOLA CITY COUNCIL
MEETING

February 13, 2025



Harris & Associates
Team



PRESENTATION OUTLINE

- Coastal Rail Trail Overview
- Park Avenue Area
- Project Benefits
- Next Steps



COASTAL RAIL TRAIL OVERVIEW



PROJECT OVERVIEW

BACKGROUND & CONTEXT

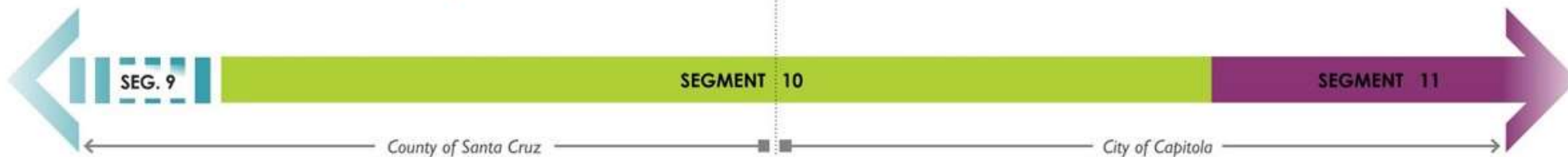
- Monterey Bay Sanctuary Scenic Trail (MBSST)
 - Trail Master Plan
 - 50-mile trail network
 - Connects to Monterey County
 - 32-mile Coastal Rail Trail/Santa Cruz Branch Line
 - Adopted by City of Capitola in 2015



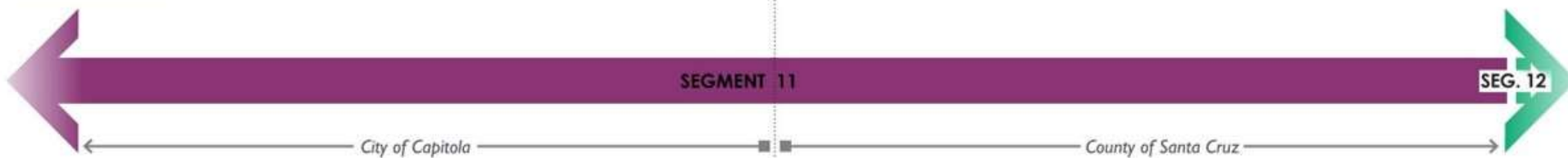
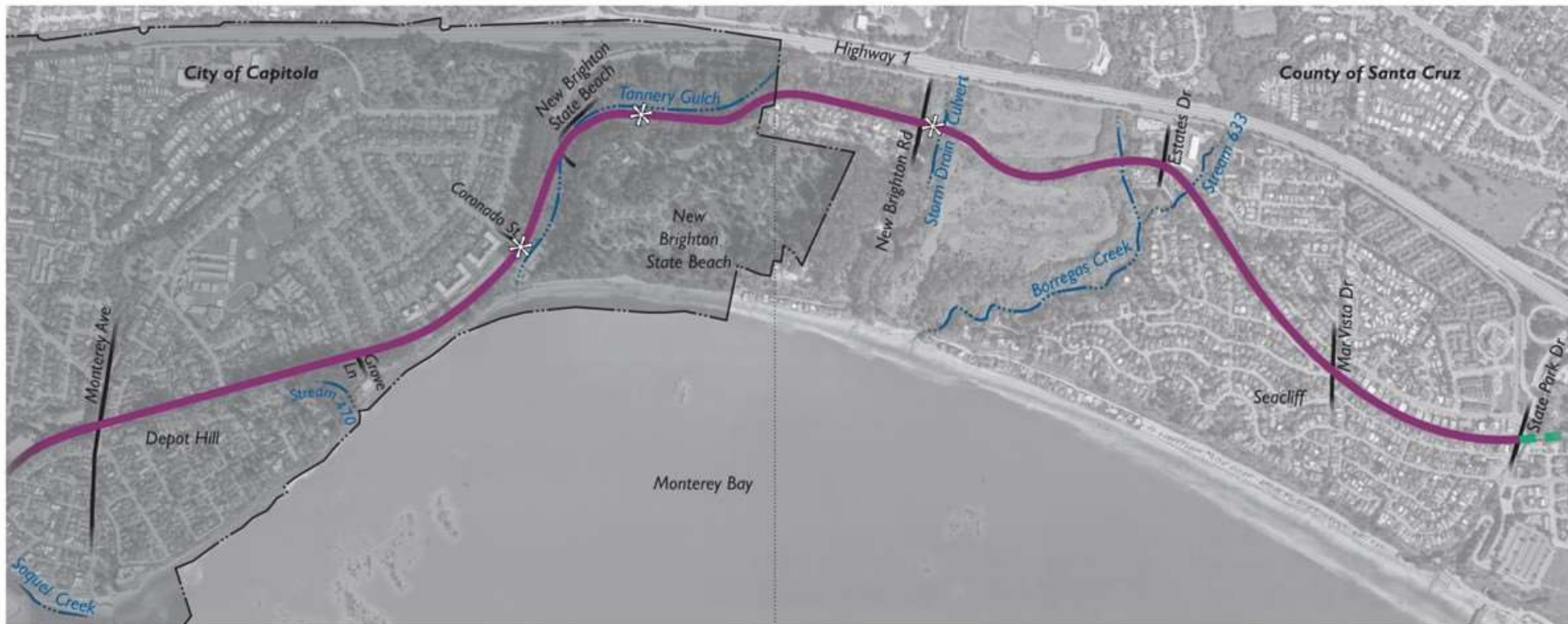
The Coastal Rail Trail



SEGMENT 10 ALIGNMENT



SEGMENT 11 ALIGNMENT





PROJECT OVERVIEW

PUBLIC OUTREACH TO DATE

- October 12, 2021 – Rio Del Mar Improvement Association
- November 17, 2021 – NOP Scoping Meeting
- January 13, 2022 – Mid County Democrats
- February 17, 2022 – RTC Transportation Policy Workshop
- April 6, 2022 – Virtual Schematic Design Open House
- April 11, 2022 – RTC Bicycle Advisory Committee
- April 12, 2022 – RTC Elderly and Disabled Technical Advisory Committee
- April 13, 2022 – In-person Schematic Design Open House
- April 19, 2022 – Online survey posted for 60 days to allow the public to comment on the design
- May 17, 2022 – Walk for Wellness Live Oak event
- May 19, 2022 – Bike and Walk to School Day at Live Oak Elementary
- May 19, 2022 – Boys & Girls Club Live Oak End of Year event
- May 23, 2022 – Live Oak Resource Center Food Distribution event
- May 24, 2022 – Family Drop-In Day at Chanticleer Park
- May 27, 2022 – Walk for Wellness Capitola event
- June 6, 2022 – Parks and Recreation Commission
- March 14, 2023 – Seacliff Improvement Association
- **March 23, 2023 – Capitola City Council**
- **October 26, 2023 – Capitola City Council**
- November 16, 2023 – Draft EIR Public Meeting
- March 26, 2024 – Final EIR Certification



PROJECT OVERVIEW

Ultimate Trail Configuration (Trail next to Rail Line)

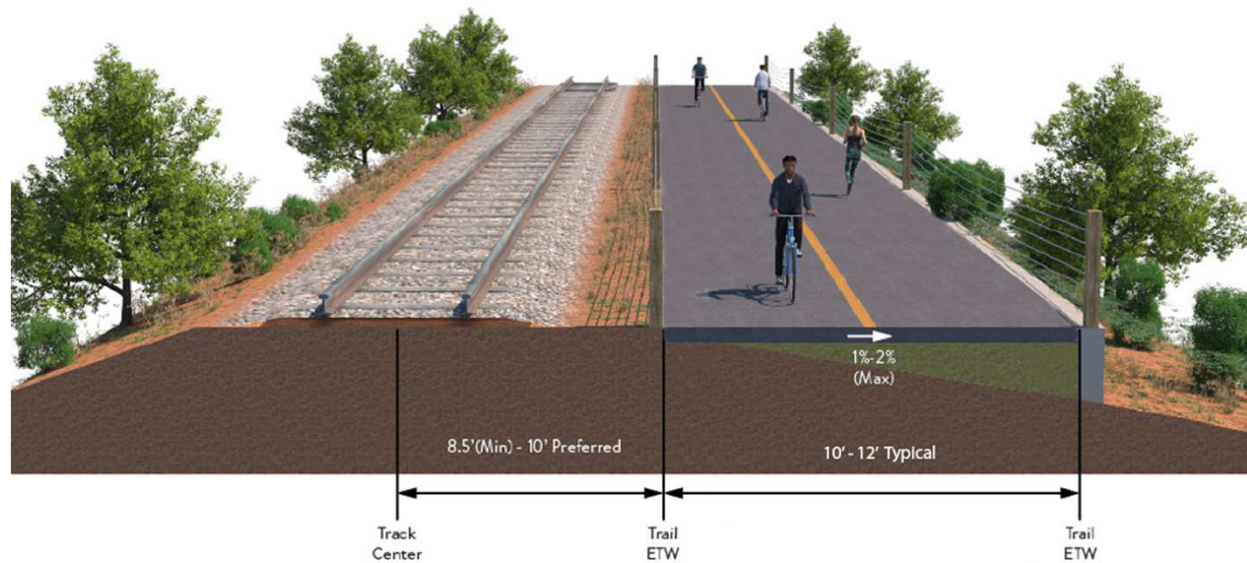
Park Ave

- Generally 12' wide, 4.2 miles long
- Consistent with MBSST Master Plan
- Alignment included in the ATP Grant



Escalona

Park Ave area



41ST AVENUE AREA



Existing



Ultimate Trail



ESTIMATED COSTS (2023)

Phase	Description	Estimated Cost	Funding Needed (Estimated)
PAED	Project Approval and Environmental Documentation	\$4.5 million	
PSE	Plans, Specifications, and Estimate	\$2.9 million	
ROW	Right-of-Way	\$8.2 million	\$6.4 million
CON	Construction	\$96.2 million	\$21.6 million
NI	Non-Infrastructure	\$0.995 million	
TOTAL		\$111.7 million	\$27-28 million



KEY DECISIONS

March 26, 2024 Board of Supervisors Meeting

- Certify Final EIR

April 18, 2024 RTC Meeting

- Affirm support for the Ultimate Trail Configuration
- Negotiate agreement w/ Roaring Camp for track relocation
- Commit to fully funding project w/ state, federal, and local funding
- Accept Final EIR

April 30, 2024 Board of Supervisors Meeting

- Approve Project in Ultimate Trail Configuration



PARK AVENUE AREA



ALIGNMENT CONSIDERATIONS

- Reduced Cost
- Conceptual ZEPRT Alignment
- Capitola Park Ave Traffic Calming Project



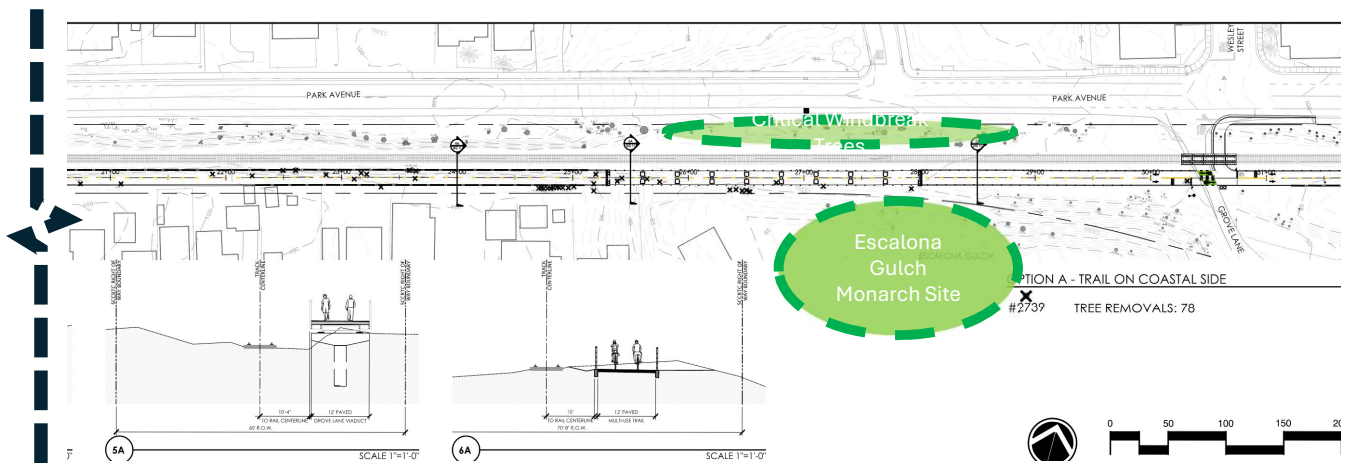
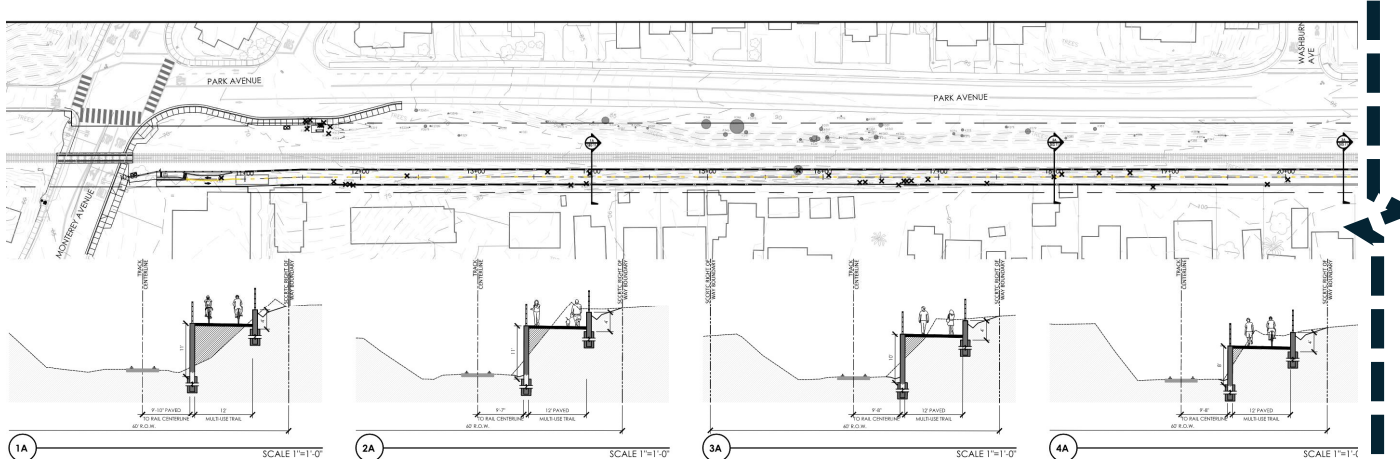
PARK AVENUE AREA

MONTEREY AVE TO GROVE LANE

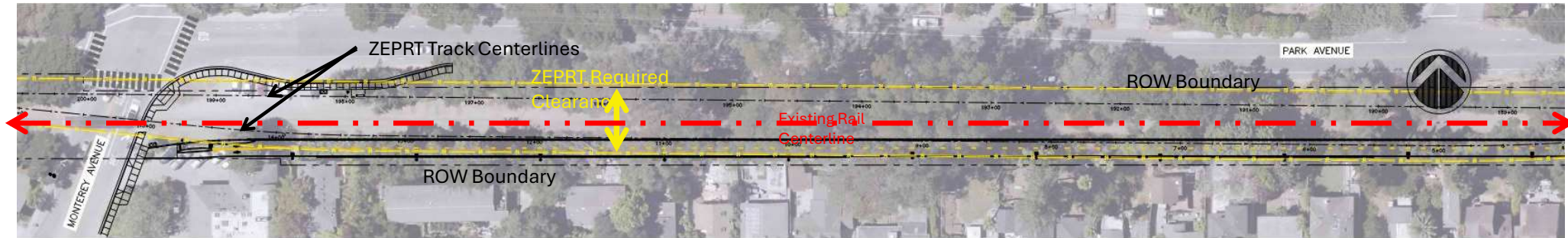
MONTEREY AVE TO GROVE LANE PREVIOUS DESIGN – COASTAL ALIGNMENT



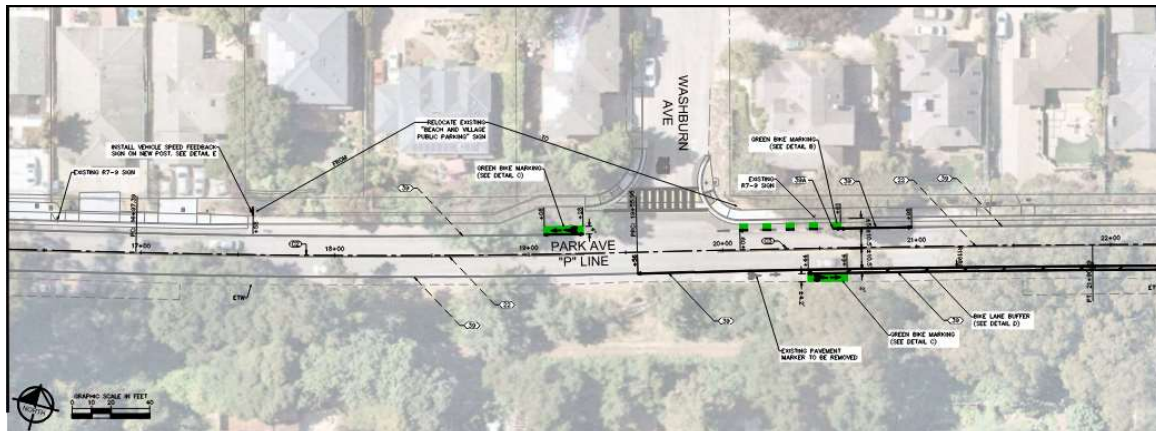
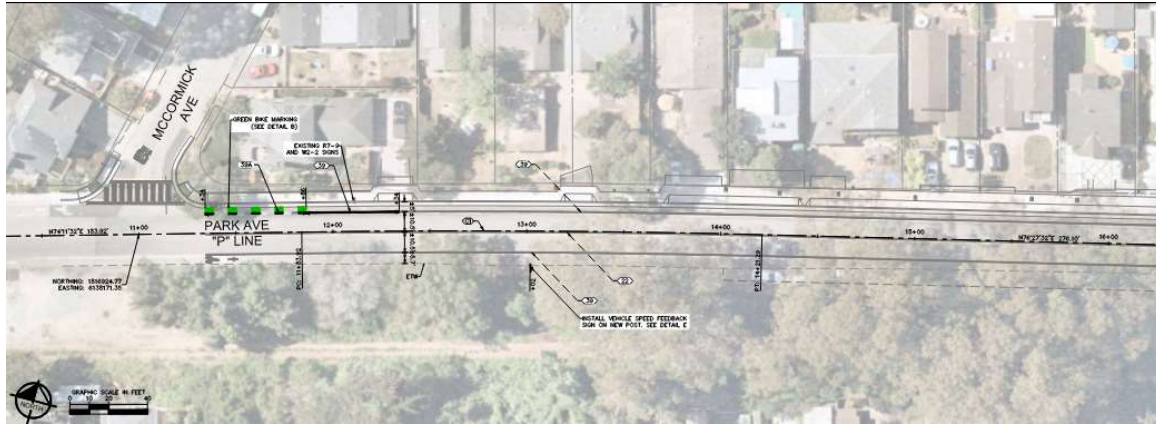
MONTEREY AVE TO GROVE LANE - PREVIOUS DESIGN



MONTEREY AVE TO GROVE LANE ZEPRT COORDINATION



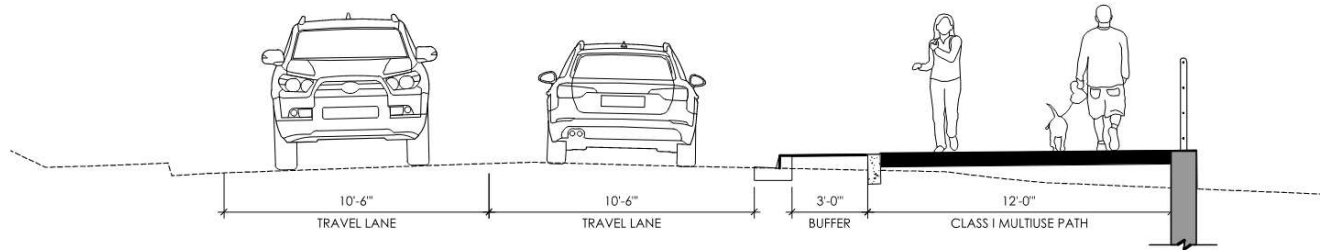
MONTEREY AVE TO GROVE LANE TRAFFIC CALMING COORDINATION



MONTEREY AVE TO GROVE LANE PARK AVE ALIGNMENT



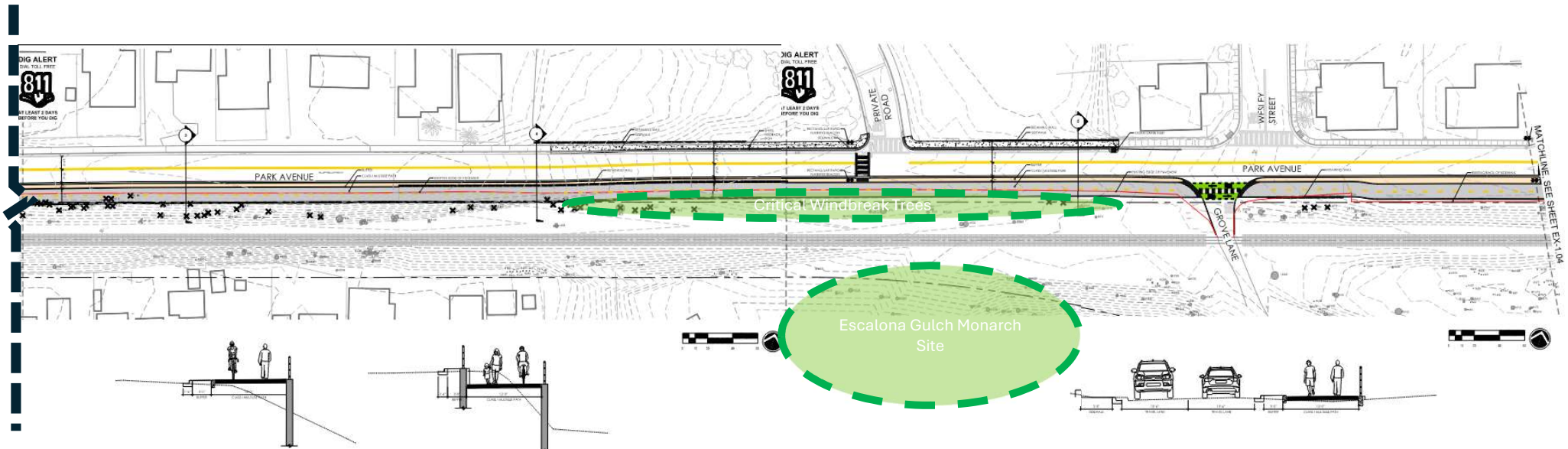
MONTEREY AVE TO GROVE LANE PARK AVE ALIGNMENT



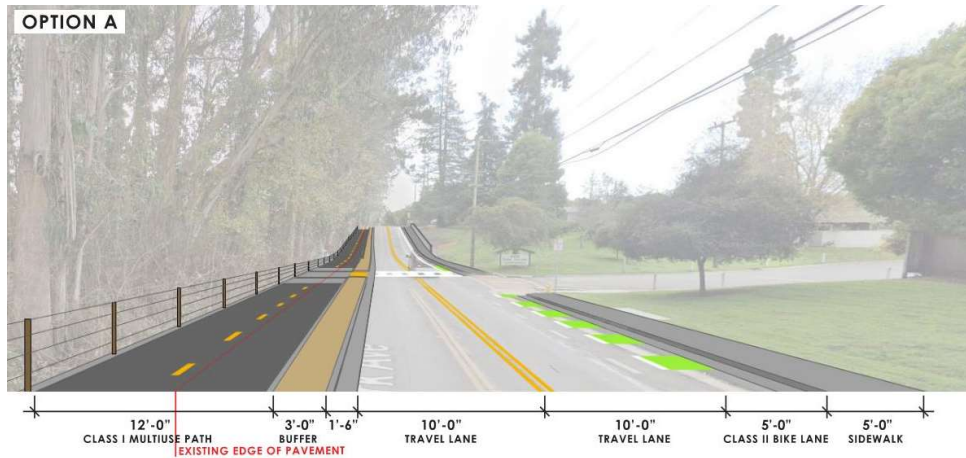
MONTEREY AVE TO GROVE LANE PARK AVE ALIGNMENT



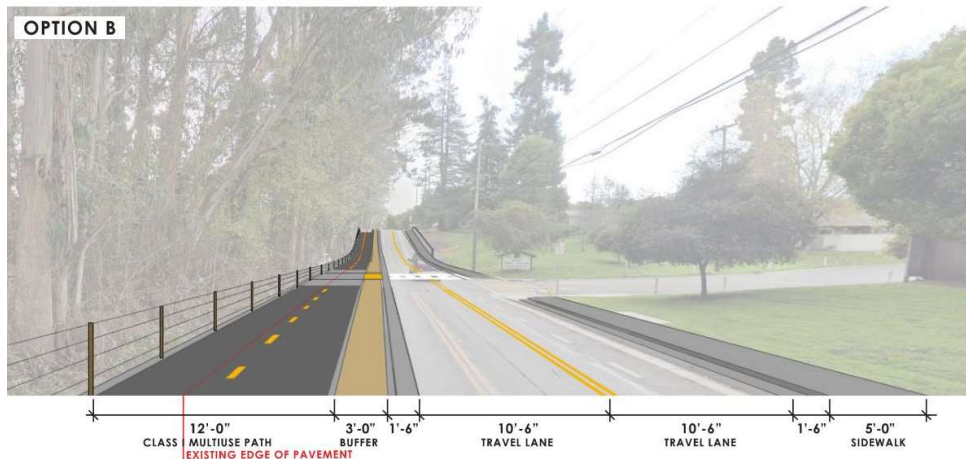
MONTEREY AVE TO GROVE LANE PARK AVE ALIGNMENT



MONTEREY AVE TO GROVE LANE PARK AVE ALIGNMENT OPTIONS



- Option A – preserves inland bike lane



- Option B – maximizes use of ROW for trail

MONTEREY AVE TO GROVE LANE PARK AVE ALIGNMENT – BIKE LANE ACCESS





PARK AVENUE AREA

GROVE LANE TO CORONADO ST

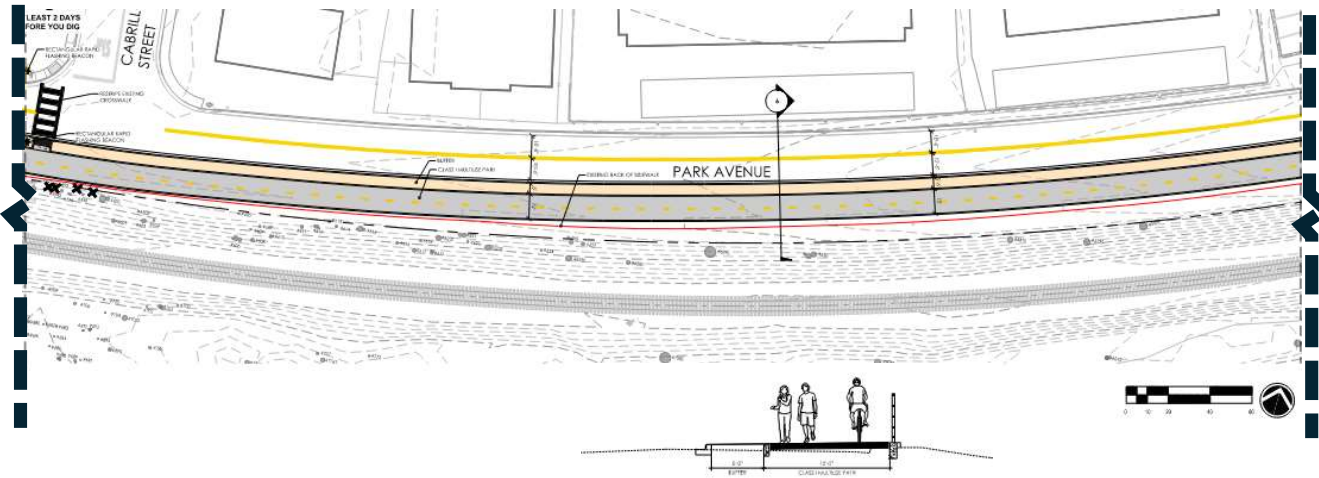
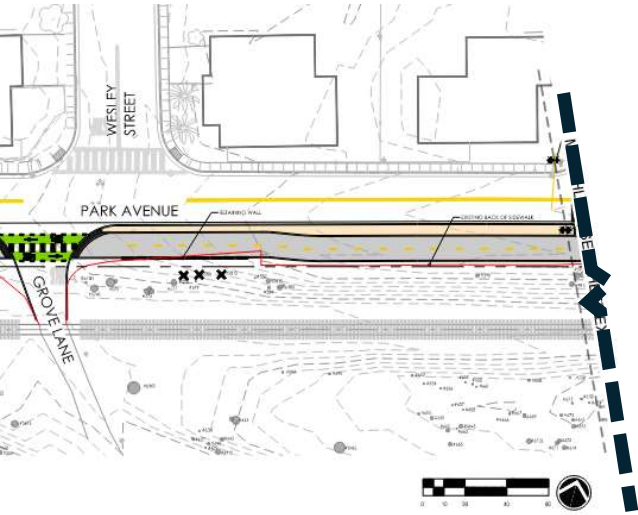
GROVE LANE TO CORONADO ST PREVIOUS DESIGN – COASTAL ALIGNMENT



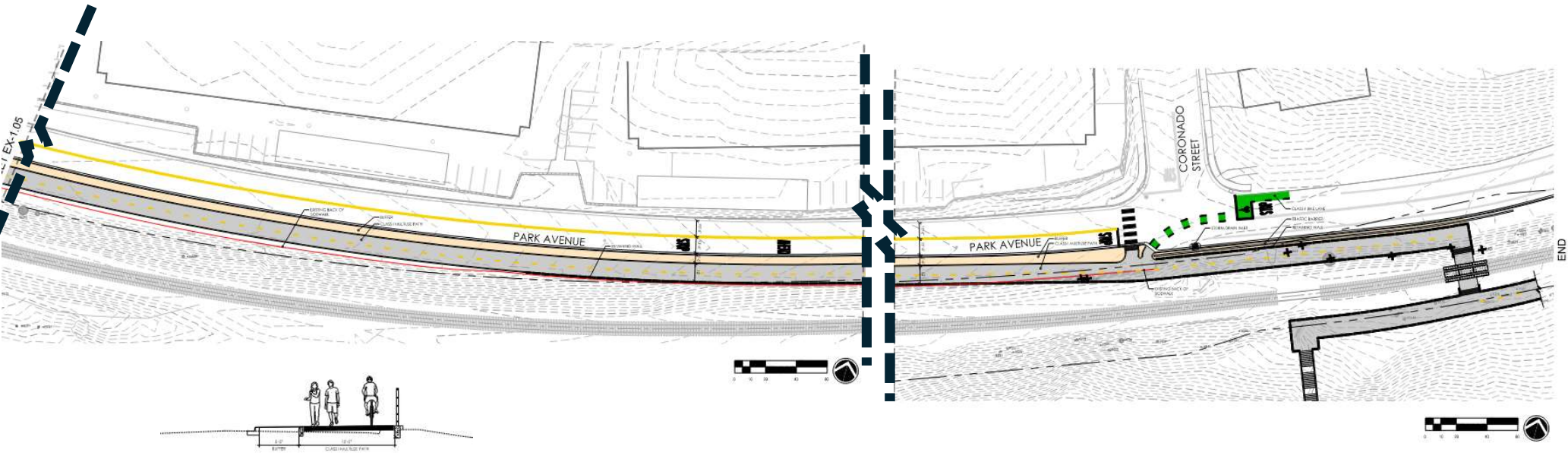
GROVE LANE TO CORONADO ST PARK AVE ALIGNMENT



GROVE LANE TO CORONADO ST PARK AVE ALIGNMENT



GROVE LANE TO CORONADO ST PARK AVE ALIGNMENT



GROVE LANE TO CORONADO ST PARK AVE ALIGNMENT OPTIONS



- Option A – preserves inland bike lane



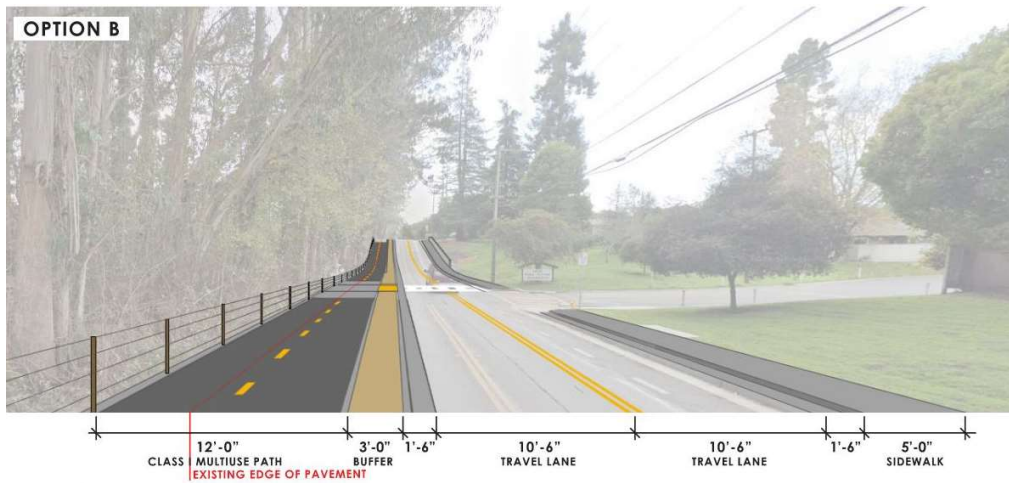
- Option B – maximizes use of ROW for trail

GROVE LANE TO CORONADO ST PARK AVE ALIGNMENT – BIKE LANE ACCESS



PARK AVE ALIGNMENT OPTION B

Monterey to Grove



Grove to Coronado



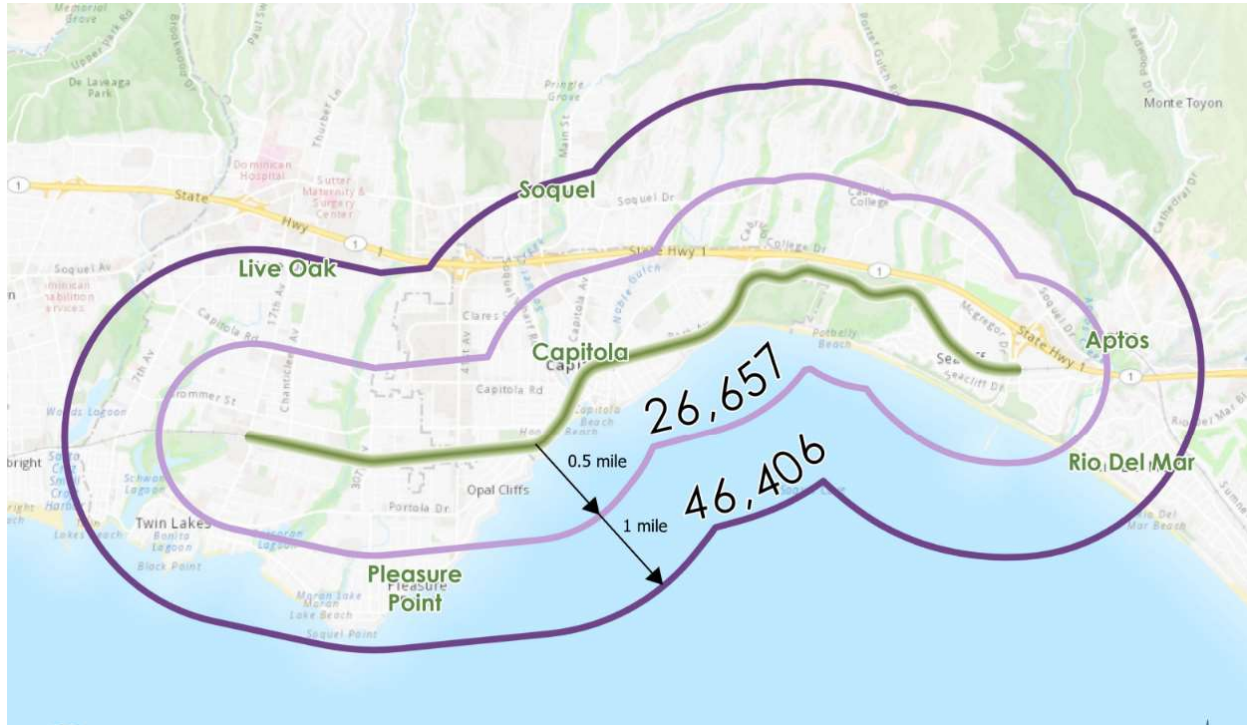


PROJECT BENEFITS



PROJECT BENEFITS

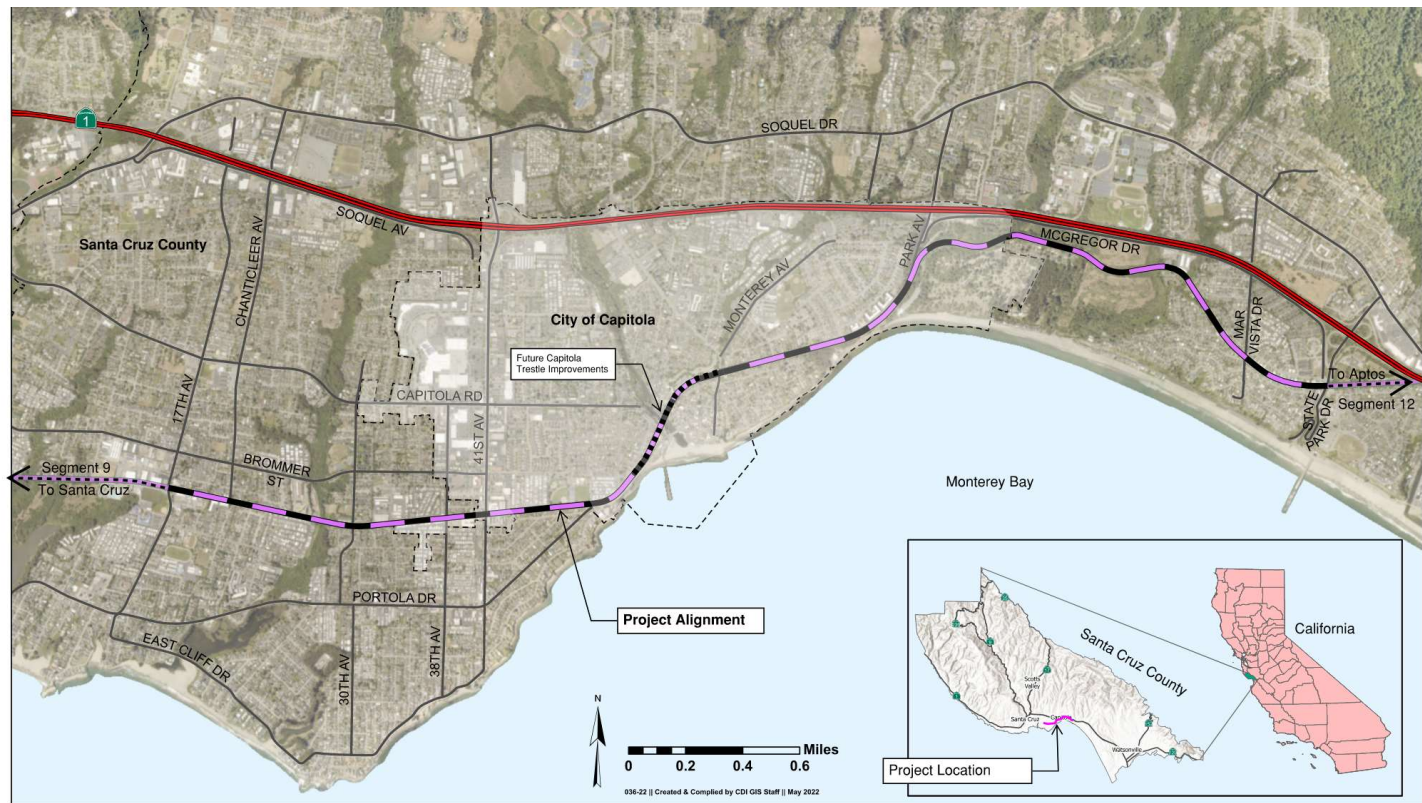
- 26,000 people live within a 10-minute walk of the project
- 46,000 live within 1-mile





PROJECT BENEFITS

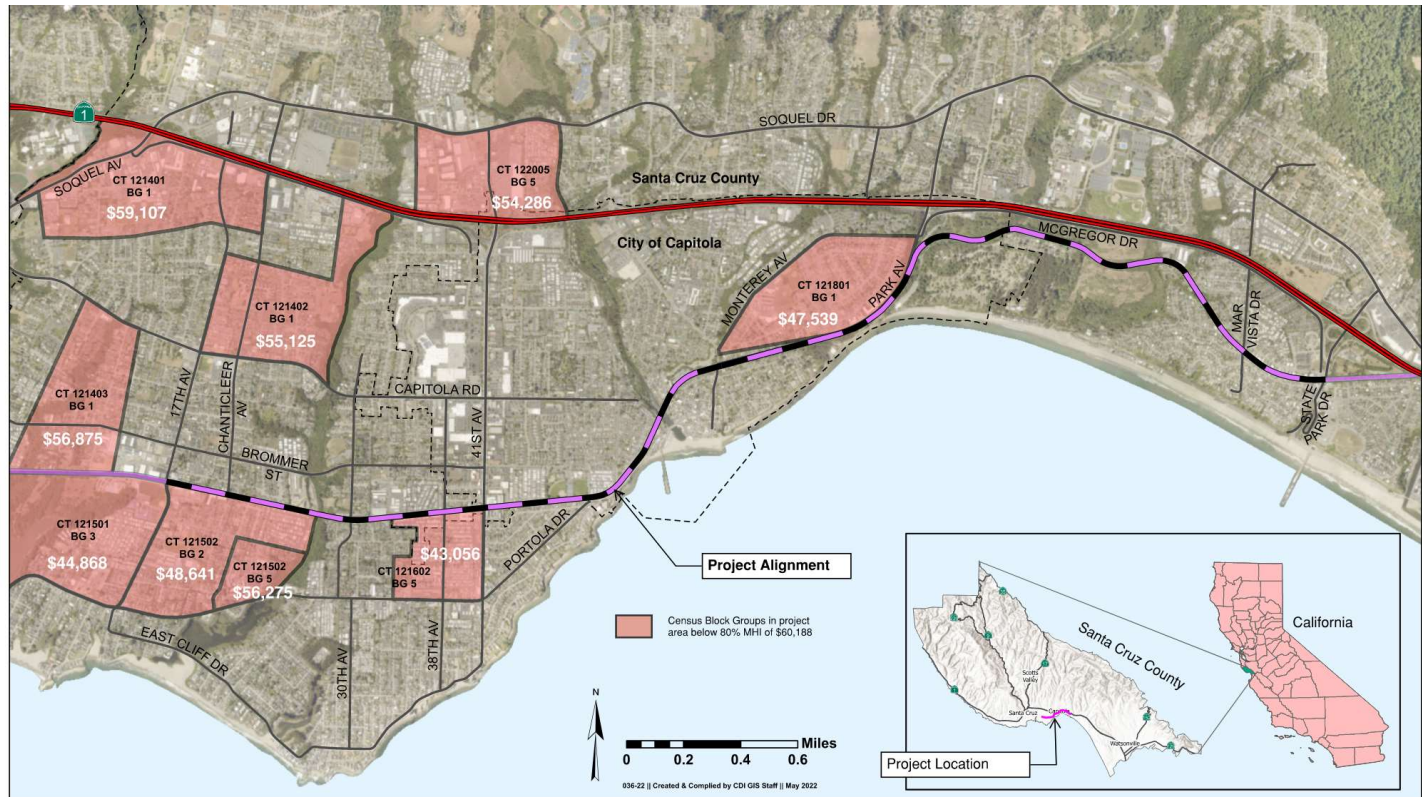
- Trail traverses the entire length of the City





PROJECT BENEFITS

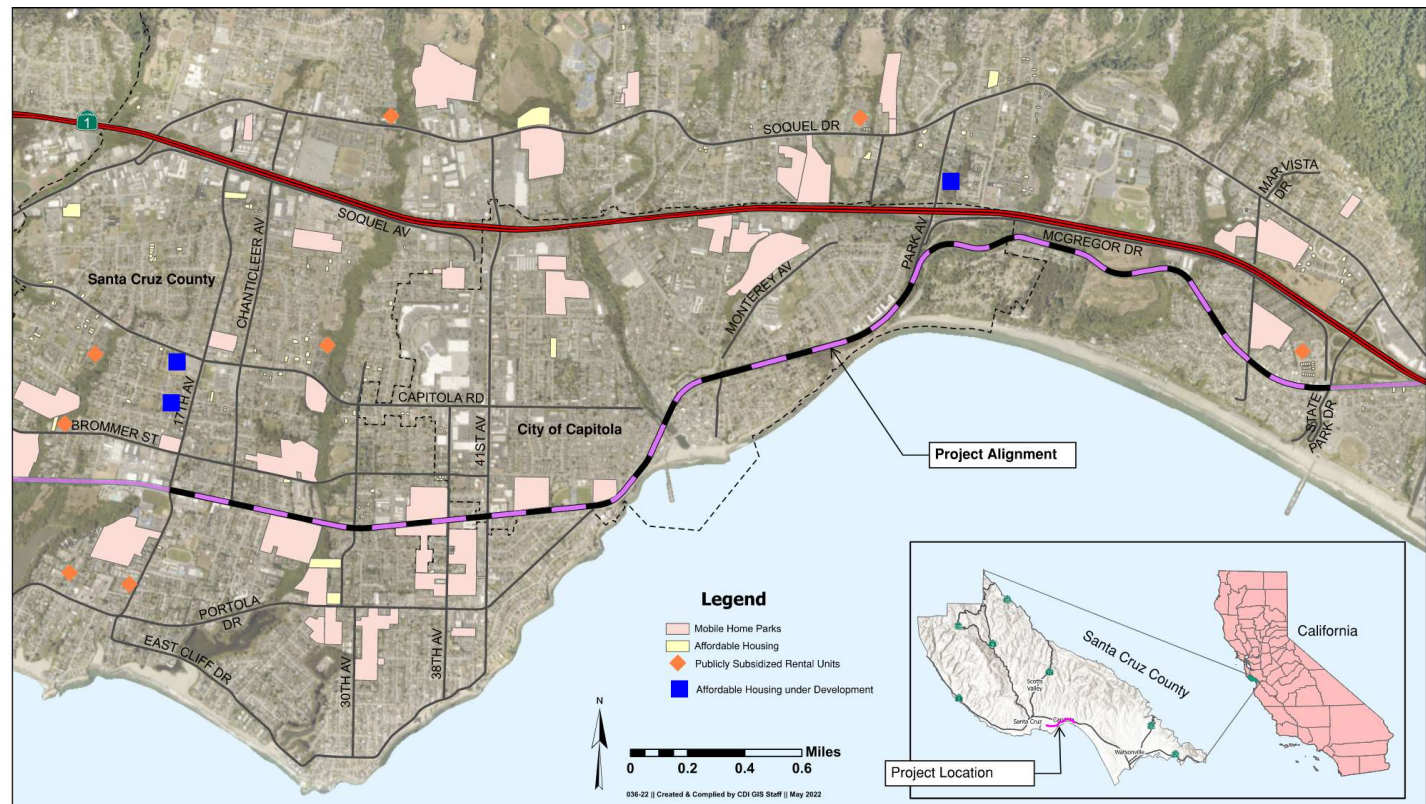
- Directly connects to low-income areas of the community





PROJECT BENEFITS

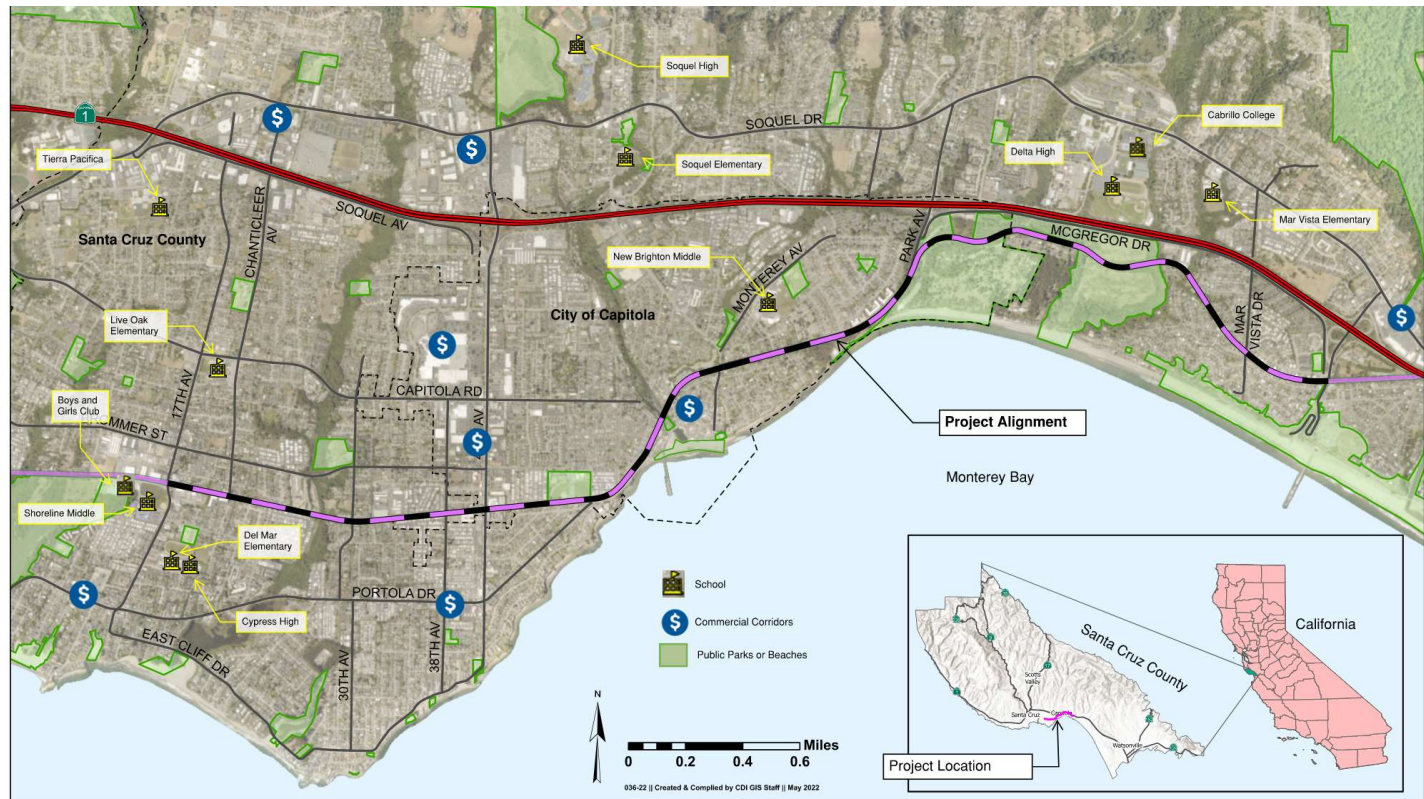
- Directly connects to existing and proposed affordable housing





PROJECT BENEFITS

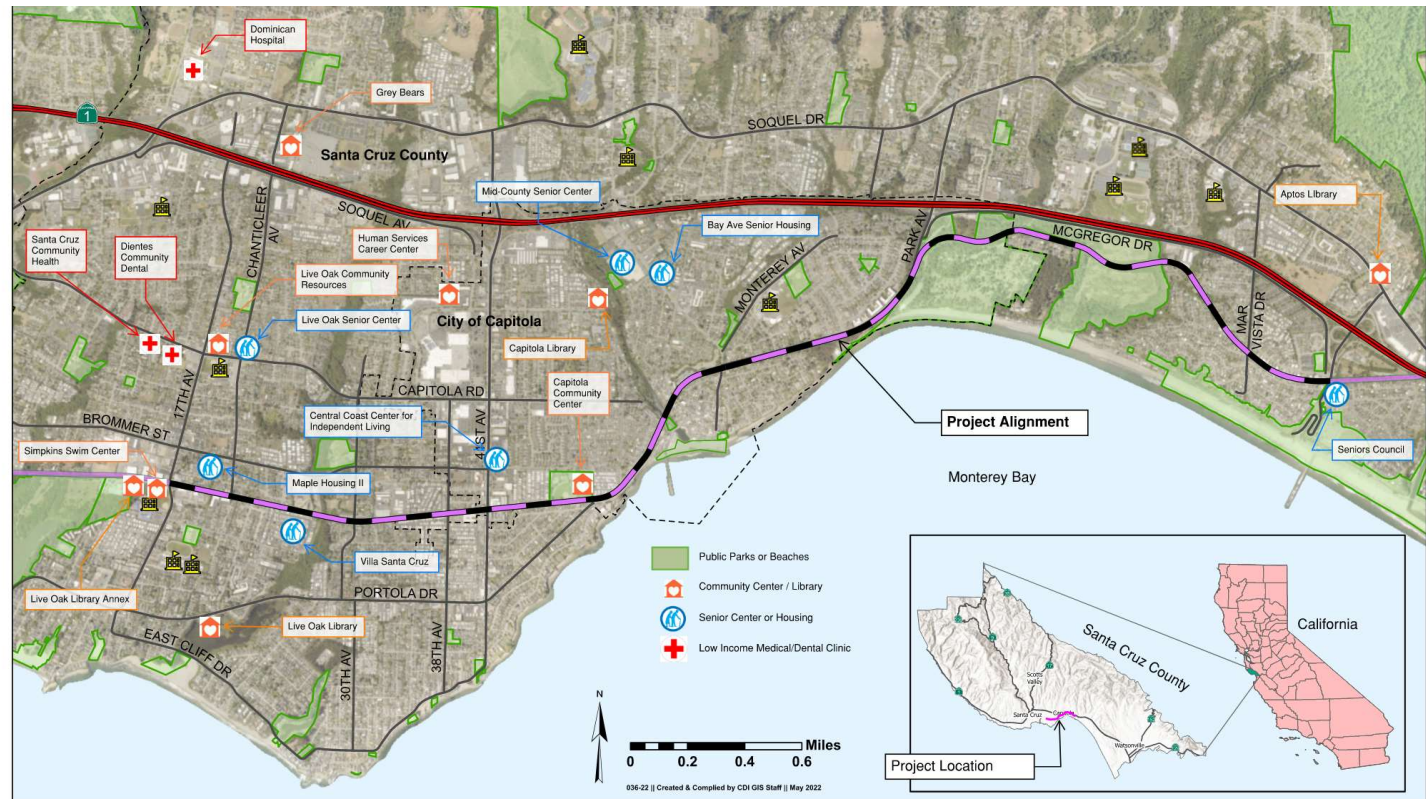
- Directly connects to schools, parks, and commercial centers





PROJECT BENEFITS

- Directly connects to libraries, community centers, senior centers and clinics

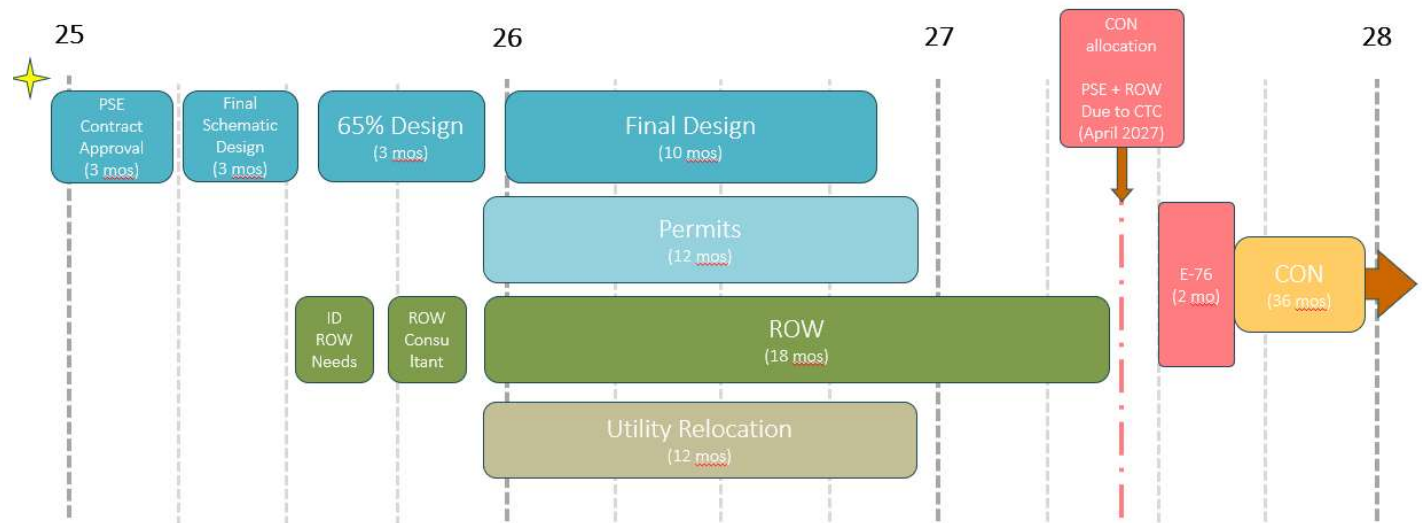





NEXT STEPS

- Additional Environmental Review
- Return for EIR Acceptance in Summer

DRAFT Project Schedule





Park Ave Traffic Calming & Rail Trail Measure L (CMC Chapter 8.72)

Measure L

- Approved by Capitola voters in 2018
- Codified in Chapter 8.72 of the Municipal Code

Purpose

- Support active transportation in the rail corridor and enhance safety for pedestrians and cyclists

Key Provisions (CMC § 8.72.040)

- Preserve & utilize the Corridor & Trestle for active transportation & recreation
- No City Funds for trail detours onto Capitola streets/sidewalks

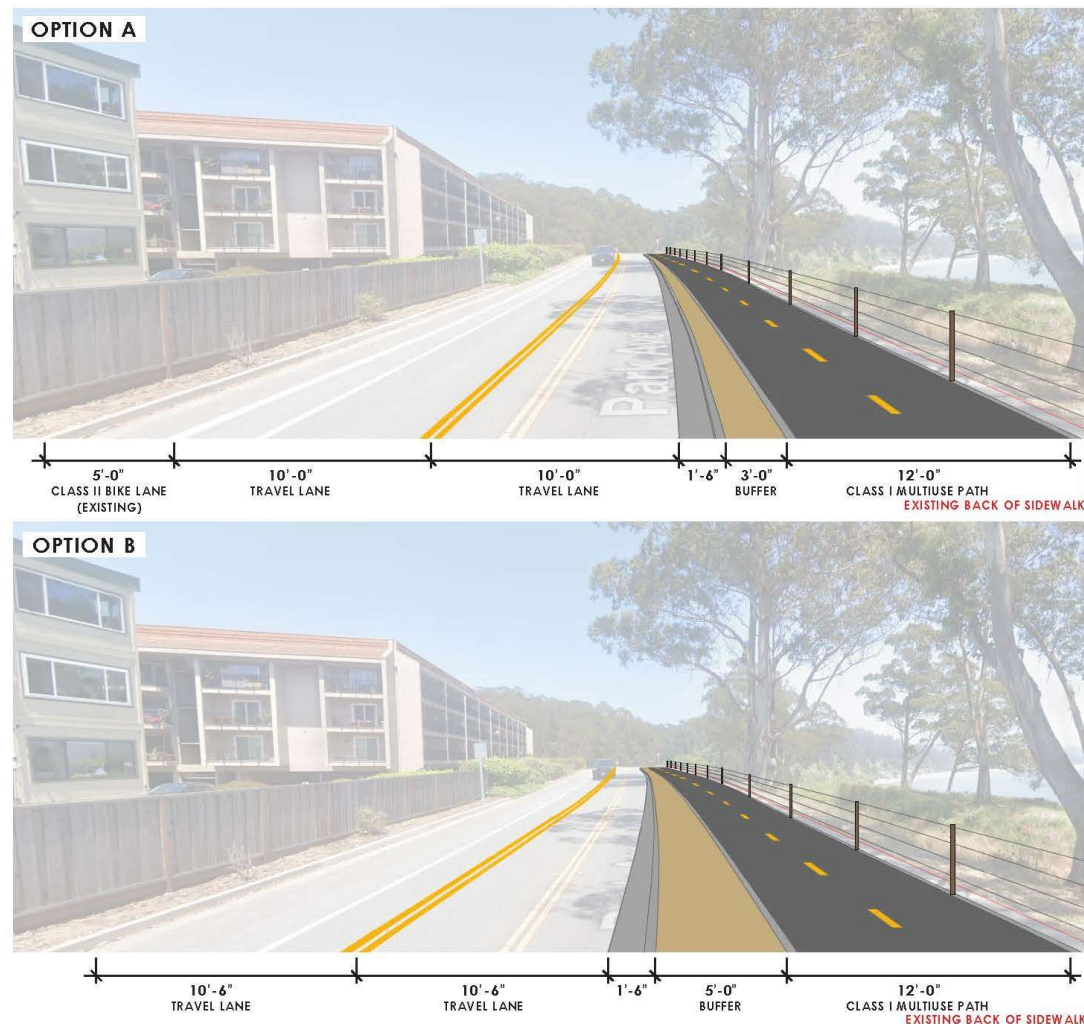
Park Ave Traffic Calming & Rail Trail Fiscal Impact

- **City Budget:** \$100K allocated for Traffic Calming; \$80.5K remaining
- **No City funds required** for Coastal Rail Trail improvements
- **Estimated cost of new active transportation/recreation trail along Park Ave: \$3M–\$5M**



Park Ave Traffic Calming & Rail Trail Next Steps

- Council to select preferred alignment
- Proceed with additional environmental review
- Return in Summer 2025 for Final EIR review
- Finalize design and coordinate construction timeline



NTA CRUZ RAIL TRAIL K AVE ALIGNMENTS - VIEW 2

OLA, CA

round image, Google Earth. [Imagery date: June 2024]. Retrieved January 10, 2025, from <https://earth.google.com/>

Park Ave Traffic Calming & Rail Trail Recommendation

Approve Park Avenue Coastal Rail Trail

- City staff recommends Option A - Preserves the Class II bike lane for direct cyclist access
- RTC & County staff recommend Option - B Maximizes right-of-way, reduces costs and environmental impacts

Defer Traffic Calming Project

- \$80,500 can be used for alternative street-related expenditures

