

Park Avenue Public Workshop #1



Traffic Calming Presentation January 2024





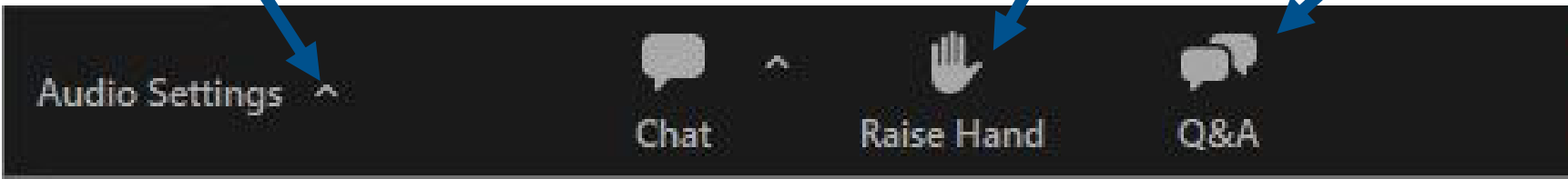
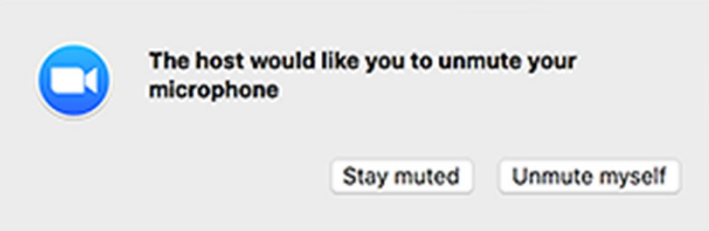
Park Avenue Virtual Meeting Controls

Audio Settings: Change your [audio settings](#). You can also click the upward arrow (^) next to change your speaker.

Unmute/Mute: When the host gives you permission, you can unmute and all participants will be able to hear you talk. If the host allows you to talk, you will receive this notification - **click "unmute myself"**

Raise Hand: [Raise your hand](#) in the webinar to indicate that you want to make a verbal comment. Function is under Reactions.

Question & Answer: Open the chat window, allowing you to ask questions only to the host. The host will collect these questions and respond after the meeting.



Park Avenue Virtual Meeting Controls



- Meeting participants are on mute until unmuted by Host for Q&A
- There is a Q&A feature at the bottom of the screen for participants to type their questions in advance. You can “raise your hand” to be unmuted to speak.
- If you are calling in on a landline, please press *9 to “raise your hand” and we will unmute you when it is your turn to speak. Press *6 to speak.
- We will devote up to 3 minutes per question/comment and please keep comments related to the project.
- Please allow others an opportunity to speak before “raising your hand” again.

Park Avenue Public Workshop #1



Traffic Calming Presentation January 2024



Park Avenue Workshop Agenda



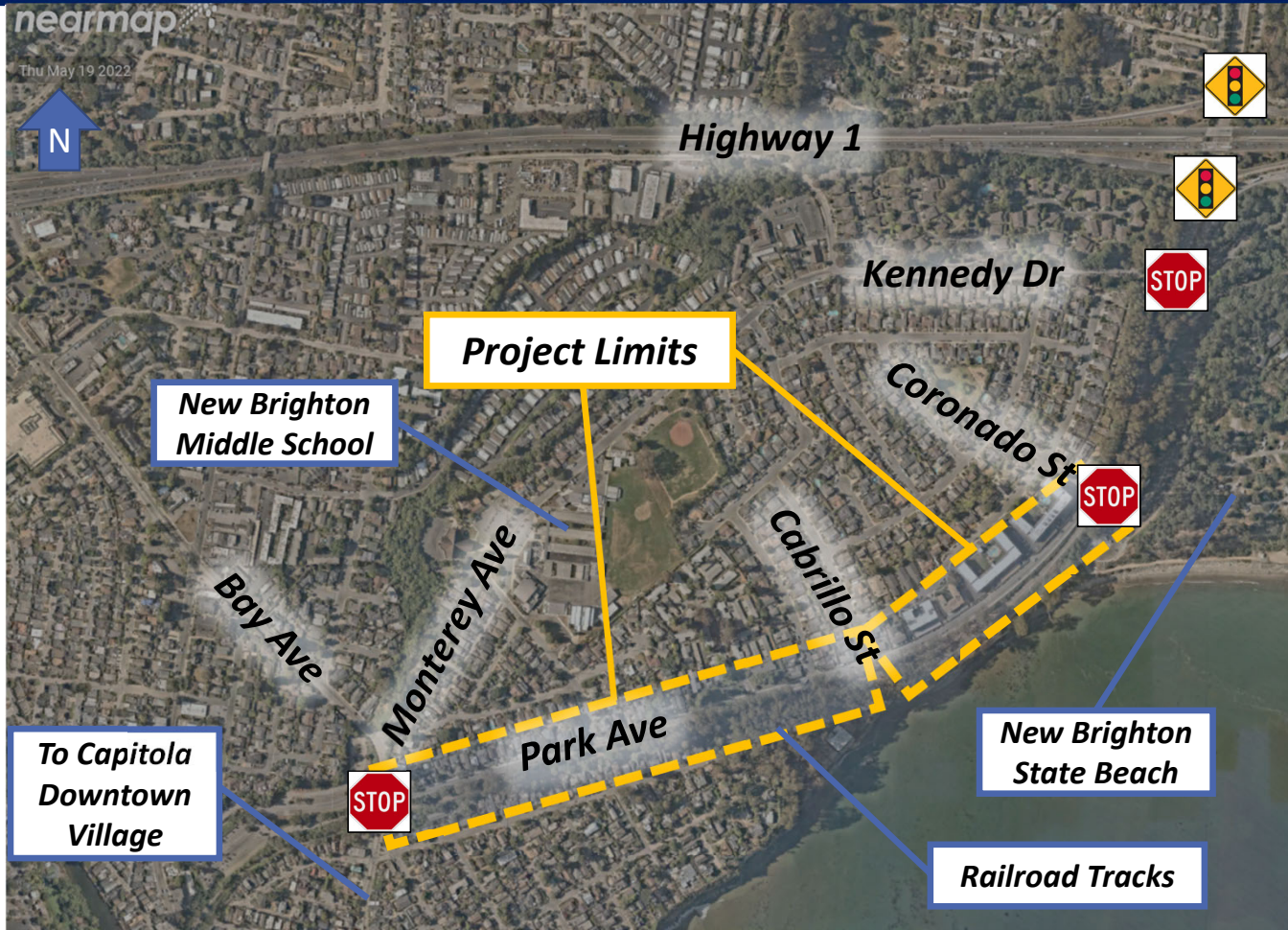
- Project background
- Overview of project features
- Open discussion and public comment on project layout

Park Avenue Project Background



- Project purpose and goals:
 1. Enhance pedestrian and bicycle accessibility
 2. Reduce vehicle speeds
 3. Minimize construction timing delays to existing residents
- Project identified in City Capital Improvement Program (CIP)
 - Neighborhood Traffic Advisory Committee Project (N10)

Park Avenue Project Overview Map



Park Avenue Existing Conditions (Monterey to Cabrillo)



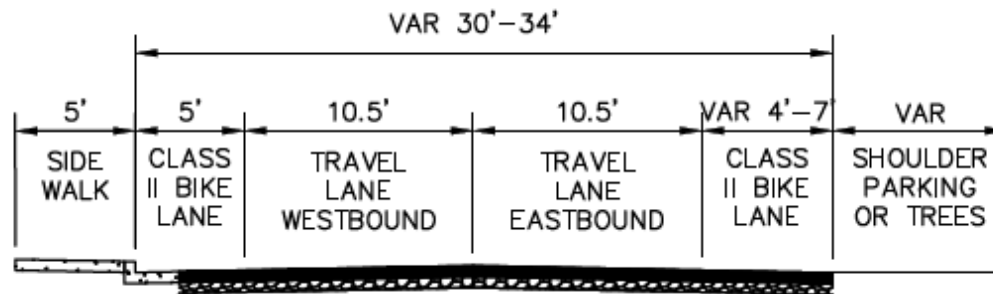
Sidewalk and striped crosswalks on north side



Residential driveway access on north side



Vehicle parking on south side



Park Avenue Existing Conditions (Cabrillo to Coronado)



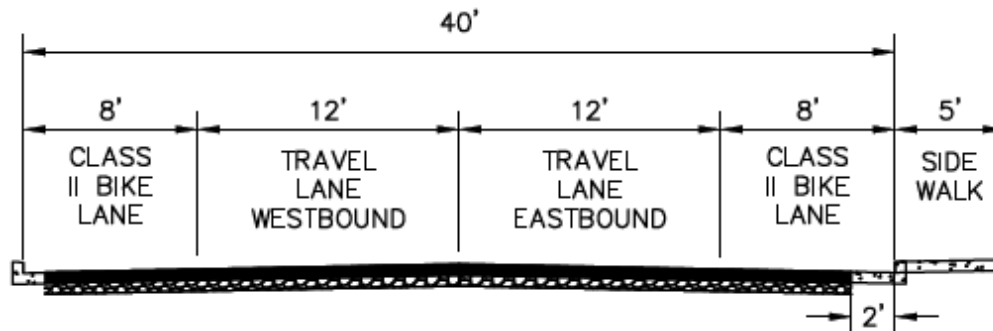
Flashing beacon pedestrian crosswalk at Cabrillo



Sidewalk and speed feedback on south side



All way stop control and crosswalk at Coronado



Park Avenue Traffic Volumes (2022)



Description	Year 2022 Traffic Count		
	Eastbound To Coronado	Westbound To Monterey	Total Traffic Volume
Average Daily Traffic (ADT)	4,614	3,138	7,752
Morning Peak (8-9 AM)	278	433	711
School PM Peak (3-4 PM)	534	267	801
Evening Peak (4-5 PM)	606	217	823



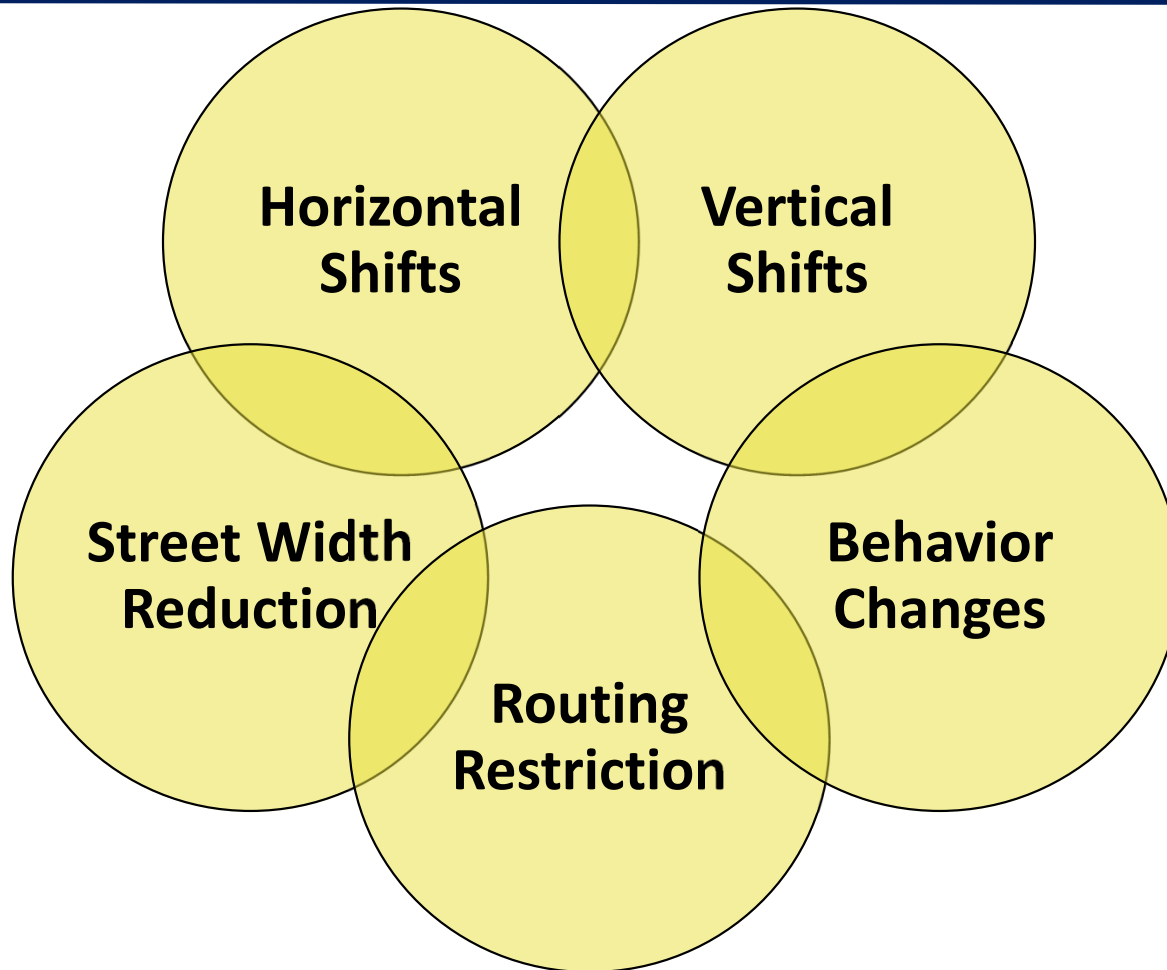
Park Avenue Vehicle Speeds (2022)



Description	Year 2022 Traffic Count	
	Location 1 - West of Washburn Ave	Location 2 - East of Cabrillo St
Posted Speed Limit (mph)	25	25
85% Speed Eastbound (to Coronado)	34	36
85% Speed Westbound (to Monterey)	34	38
Is Speeding Significant?	Yes	Yes

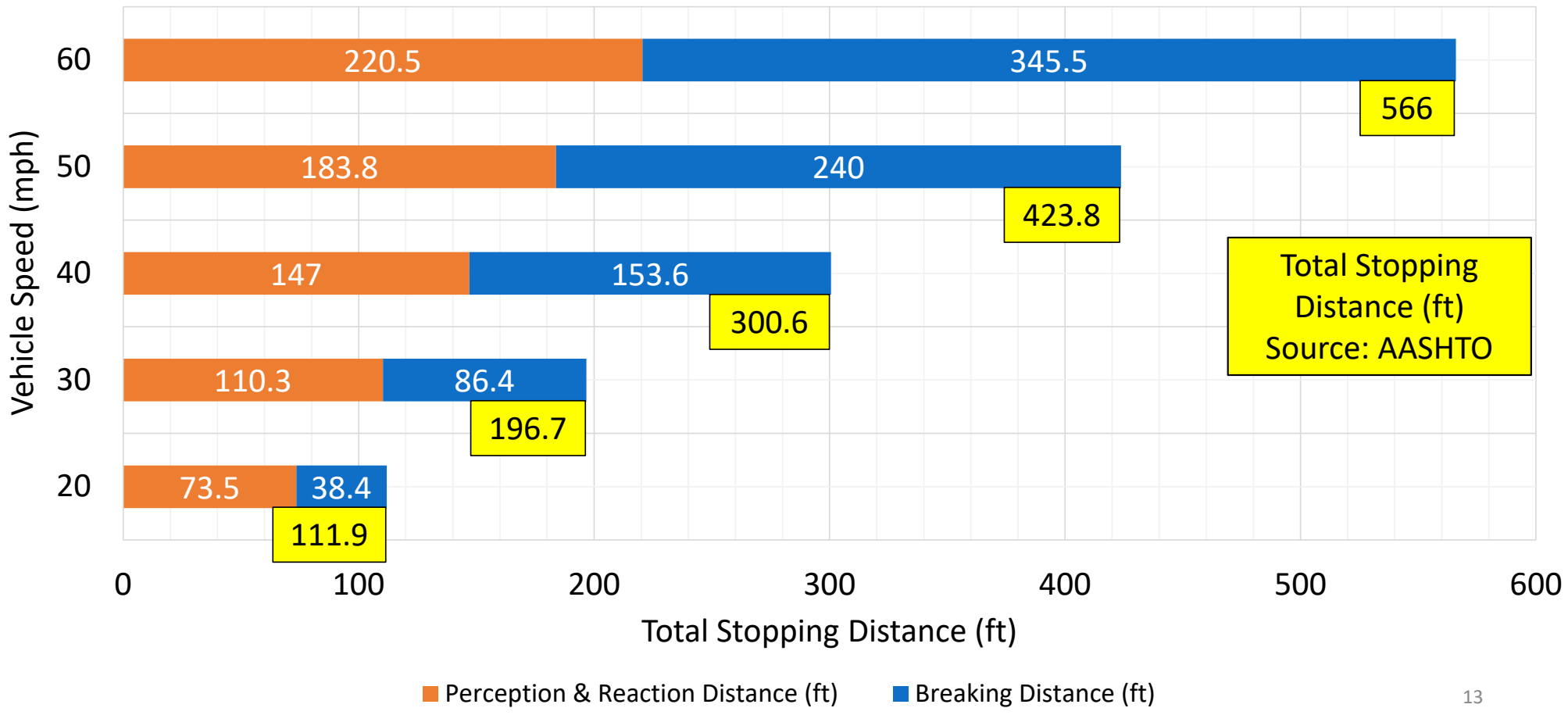


Park Avenue Traffic Calming Toolbox



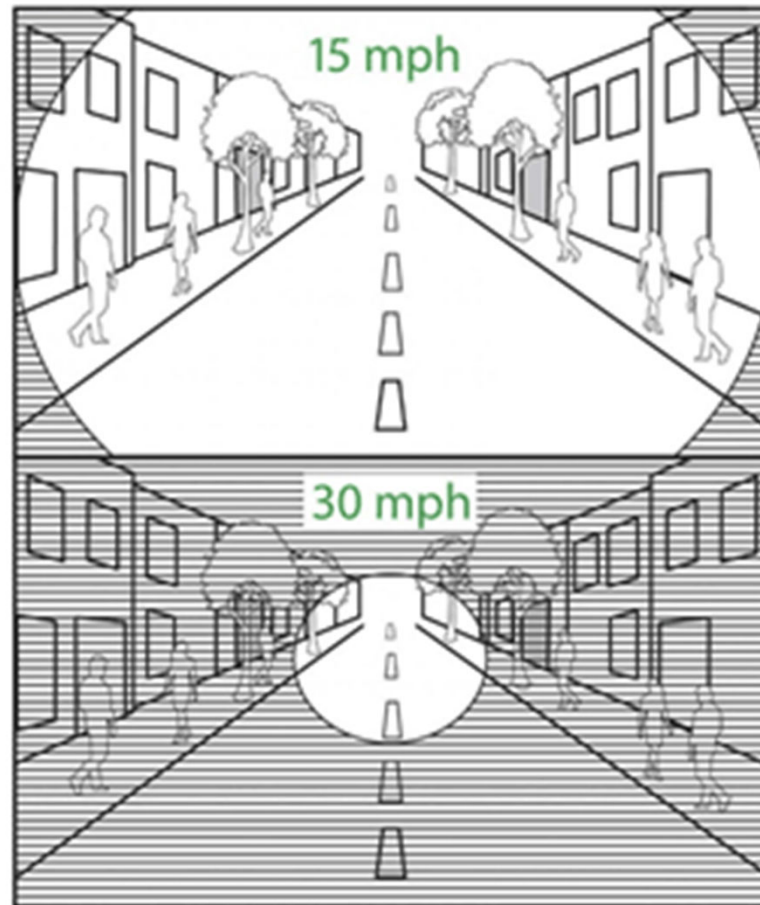
Park Avenue

Travel Speed Impact to Stopping Distance



Park Avenue

Travel Speed Impact to Driver Vision



Source: ITE



Park Avenue Travel Speed Impact to Pedestrian Fatality

● If hit by a person driving at:

● Person Survives the Collision

● Results in a Fatality



Source: ITE

Park Avenue Alternative 1 – Road Diet Striping



Park Avenue Road Diet

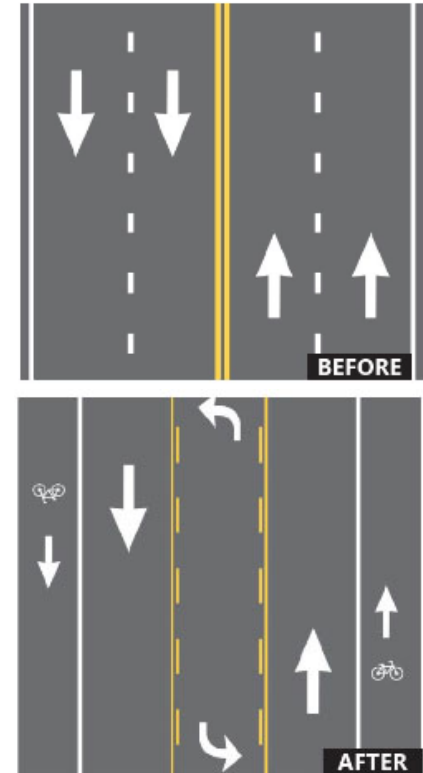
Conversion of undivided roadway to a cross-section with fewer or narrower vehicle travel lanes. Street width reduction measure.

Benefits

- Reduction in lanes allows inclusion of pedestrian, bike, and transit facilities
- Slight reduction in vehicle speeds

Drawbacks

- Requires lane and sign reconfiguration at intersections



Park Avenue Speed Feedback Sign



Displays regulatory speed limit sign with radar speed feedback sign with real-time speed of an approaching vehicle. Behavioral traffic calming measure.

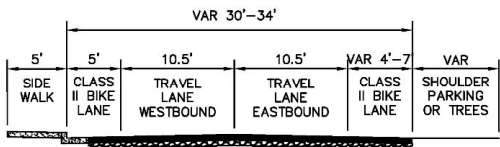
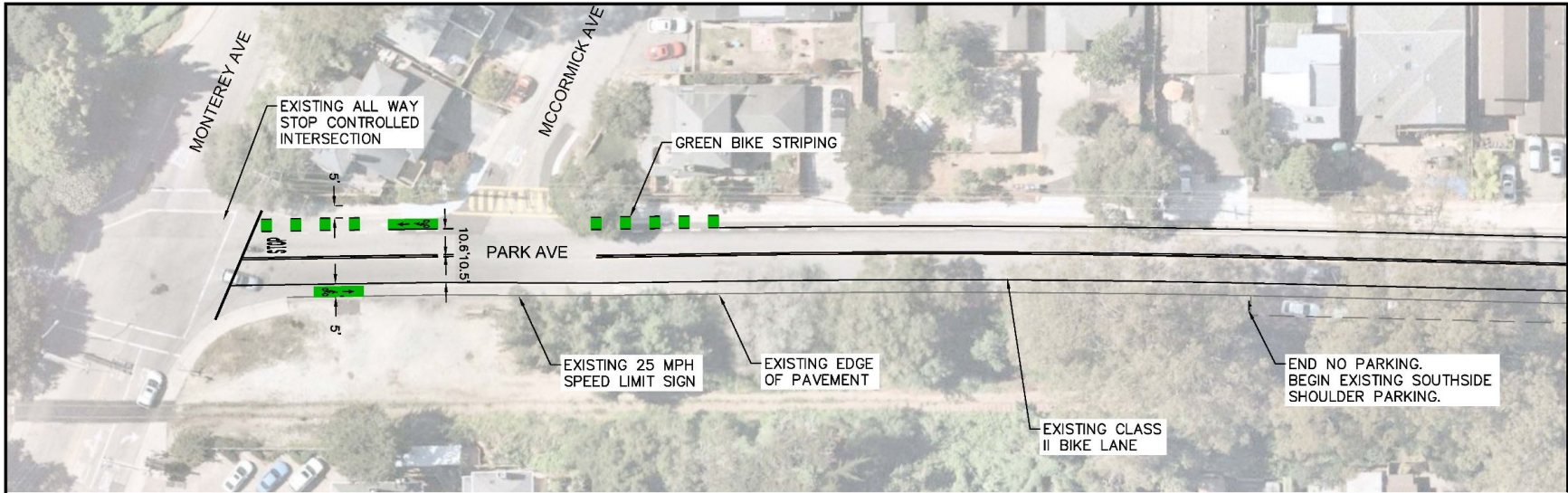
Benefits

- Does not physically restrict driver maneuvers
- Involves a standard traffic control device that drivers can easily recognize

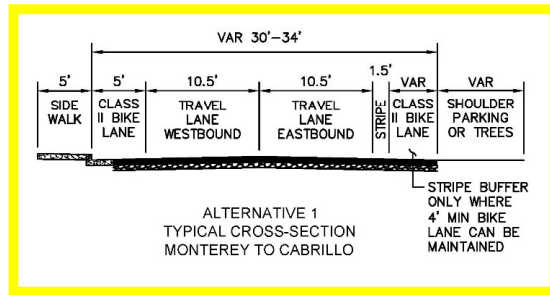
Drawbacks

- Creates light pollution

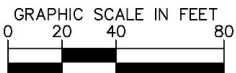
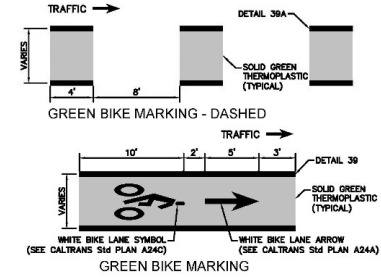




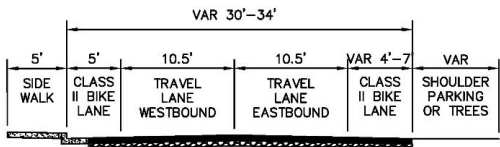
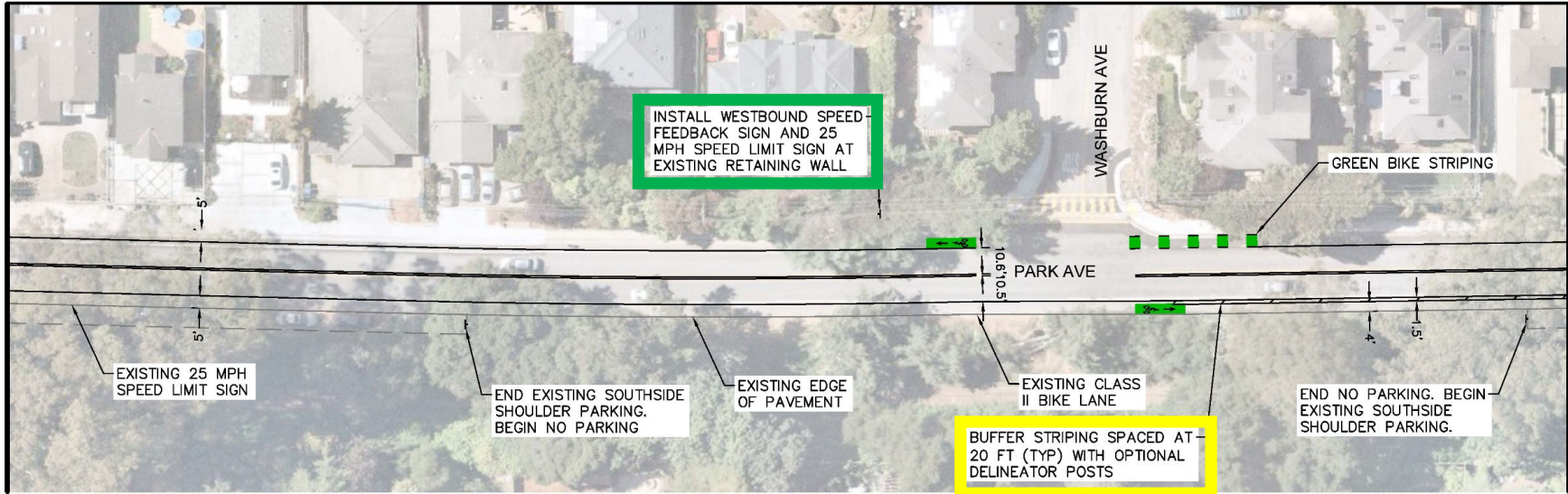
EXISTING PARK AVENUE
TYPICAL CROSS-SECTION
MONTEREY TO CABRILLO



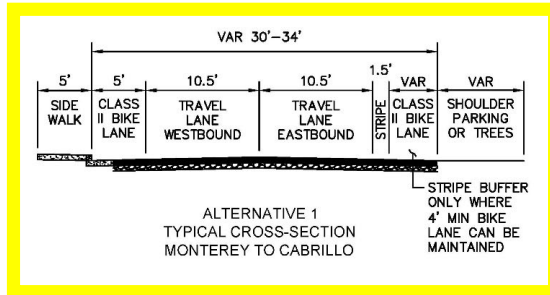
ALTERNATIVE 1
TYPICAL CROSS-SECTION
MONTEREY TO CABRILLO



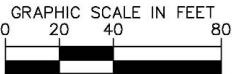
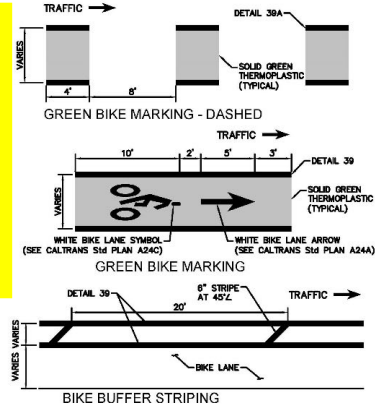
CONCEPT LAYOUT FOR
PLANNING PURPOSES.
NOT FOR CONSTRUCTION



EXISTING PARK AVENUE TYPICAL CROSS-SECTION MONTEREY TO CABRILLO



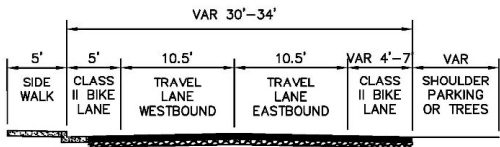
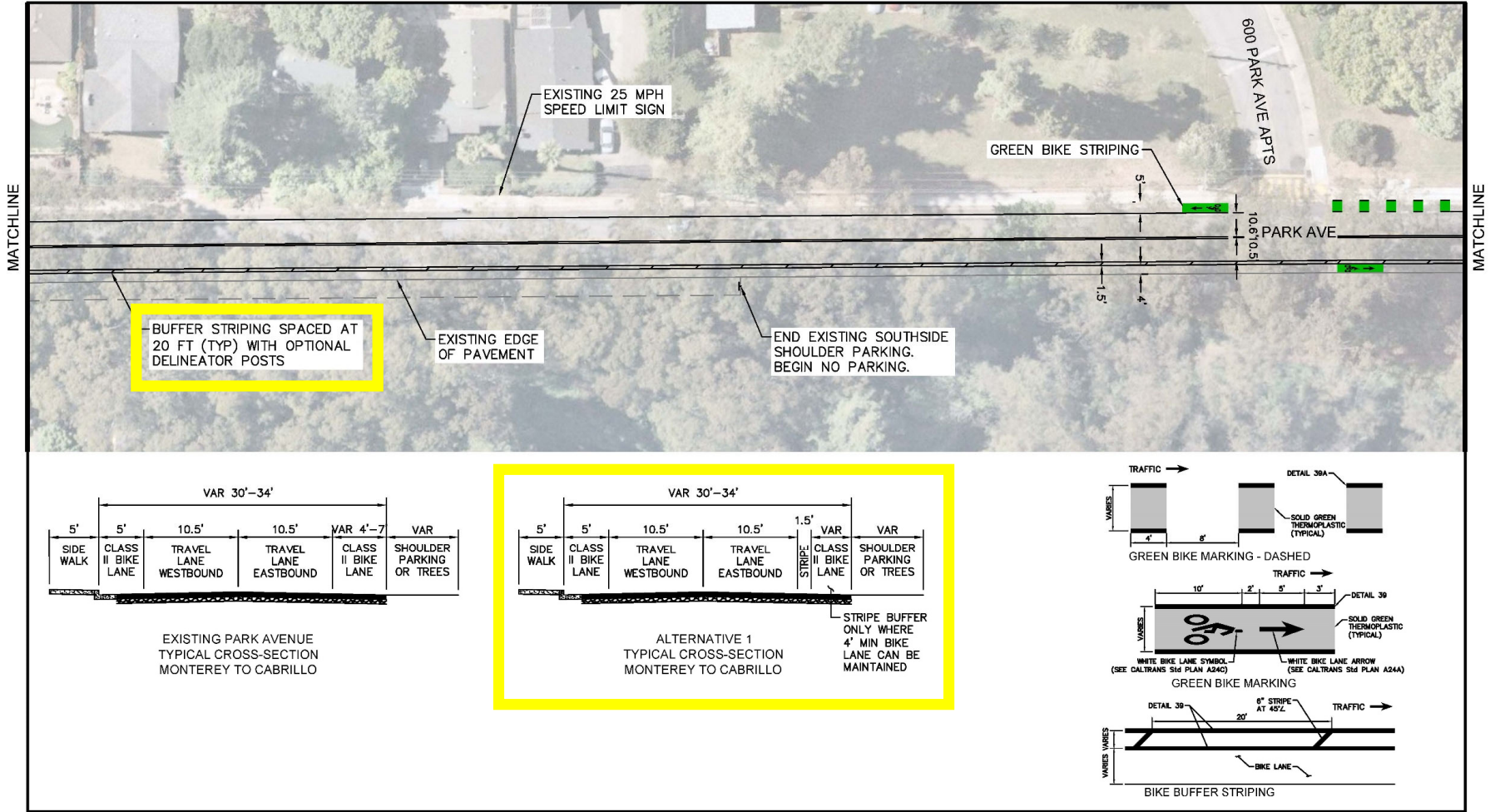
ALTERNATIVE 1 TYPICAL CROSS-SECTION MONTEREY TO CABRILLO



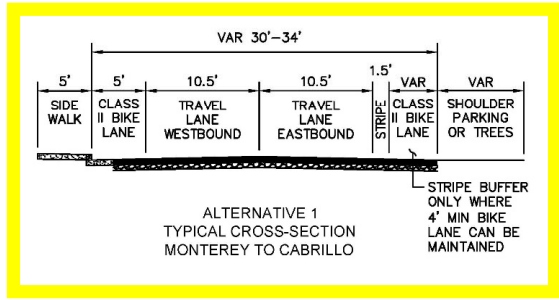
CONCEPT LAYOUT FOR PLANNING PURPOSES. NOT FOR CONSTRUCTION

ALTERNATIVE 1 - ROAD DIET STRIPING PROPOSED TC LAYOUT - SHEET 2

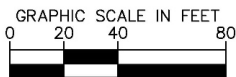
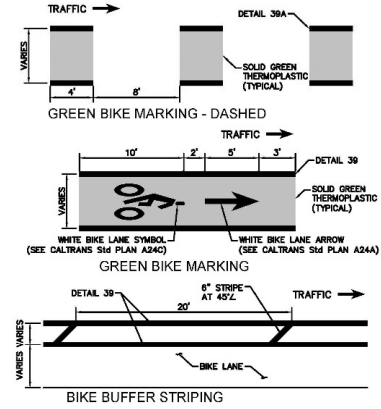
CITY OF CAPITOLA - PARK AVENUE TRAFFIC CALMING



EXISTING PARK AVENUE
TYPICAL CROSS-SECTION
MONTEREY TO CABRILLO



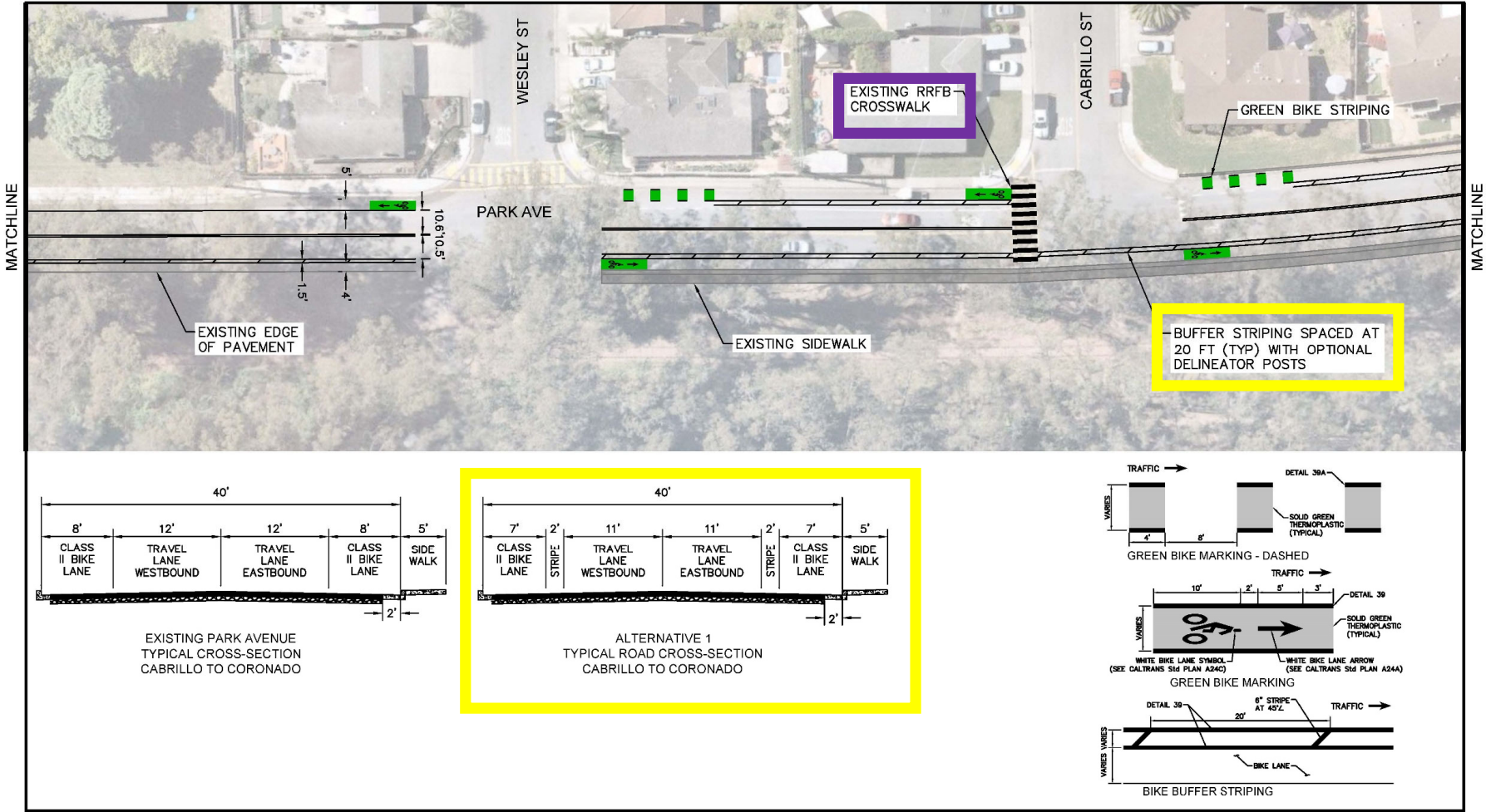
ALTERNATIVE 1
TYPICAL CROSS-SECTION
MONTEREY TO CABRILLO

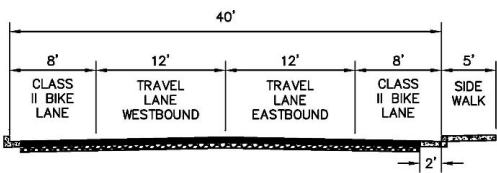
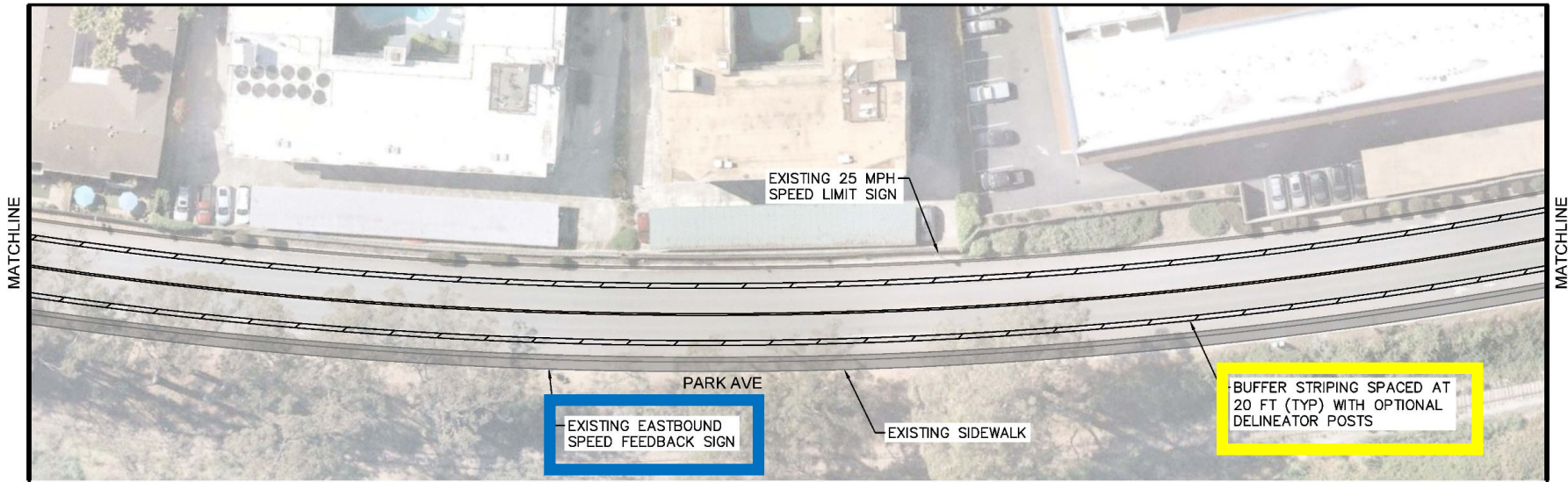


CONCEPT LAYOUT FOR
PLANNING PURPOSES.
NOT FOR CONSTRUCTION

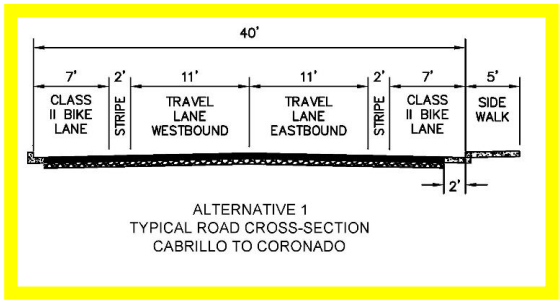
**ALTERNATIVE 1 - ROAD DIET STRIPING
PROPOSED TC LAYOUT - SHEET 3**

CITY OF CAPITOLA - PARK AVENUE TRAFFIC CALMING

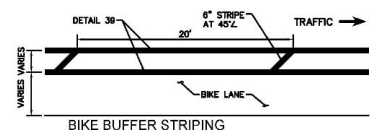




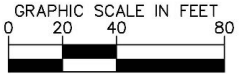
EXISTING PARK AVENUE
TYPICAL CROSS-SECTION
CABRILLO TO CORONADO



ALTERNATIVE 1
TYPICAL ROAD CROSS-SECTION
CABRILLO TO CORONADO



Kimley»Horn



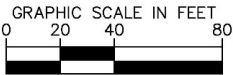
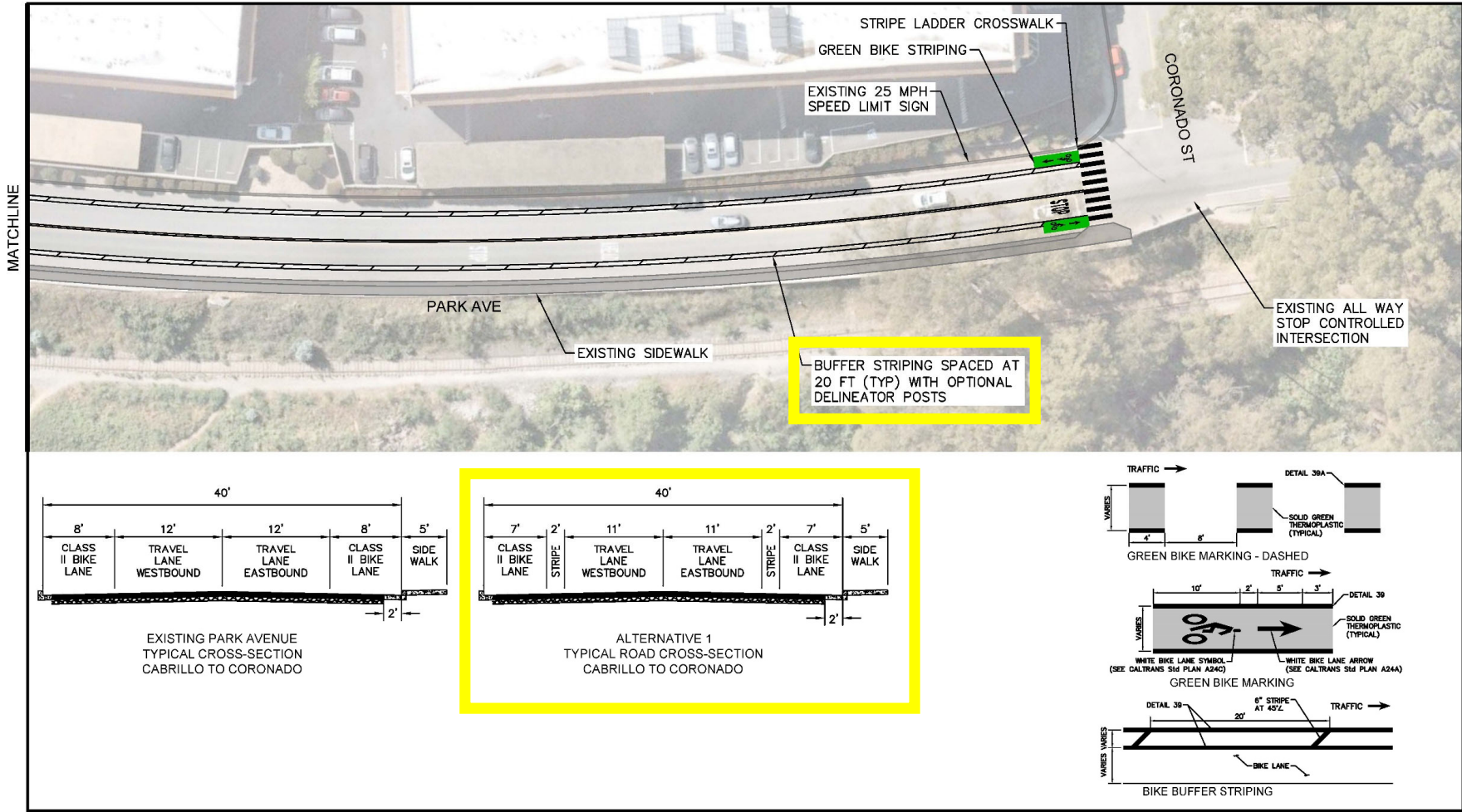
CONCEPT LAYOUT FOR
PLANNING PURPOSES.
NOT FOR CONSTRUCTION

**ALTERNATIVE 1 - ROAD DIET STRIPING
PROPOSED TC LAYOUT - SHEET 5**

CITY OF CAPITOLA - PARK AVENUE TRAFFIC CALMING

References

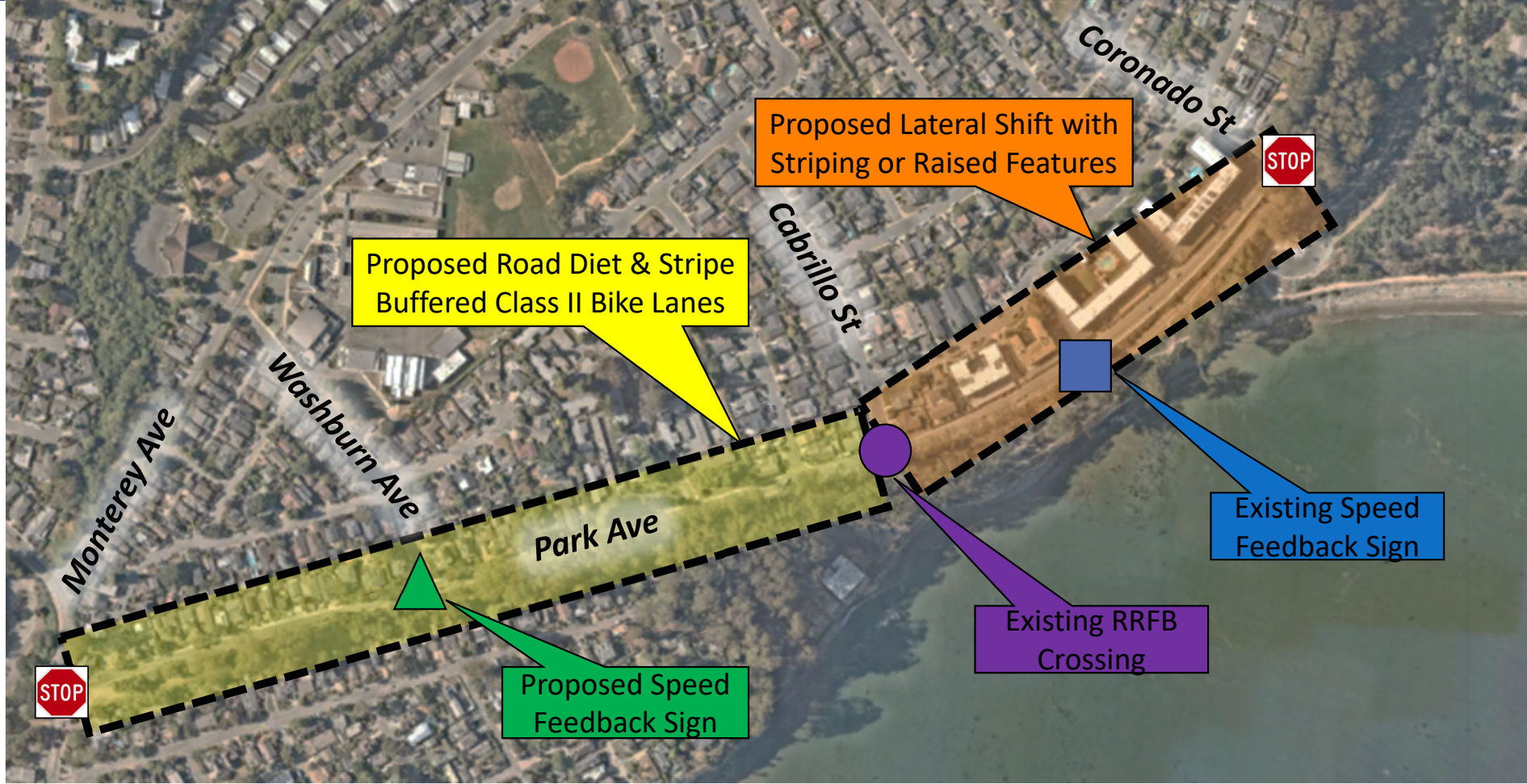
DWW-097763139 MAY 2022



CONCEPT LAYOUT FOR PLANNING PURPOSES. NOT FOR CONSTRUCTION

Park Avenue

Alternative 2 – Road Diet & Lateral Shift



Park Avenue Chicane / Lateral Shift

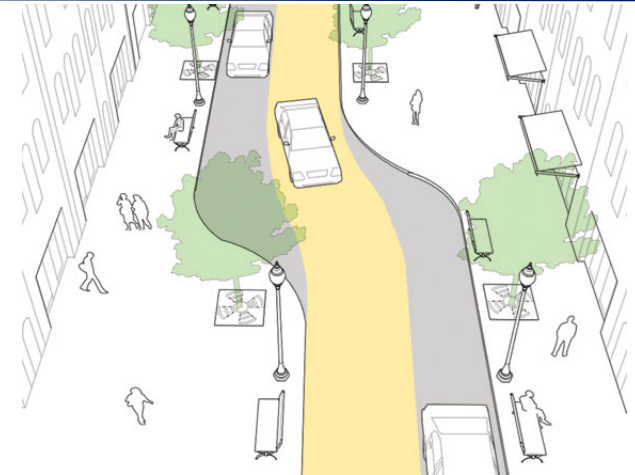
Horizontal deflection consisting of a series of alternating curves or lane shifts to force a motorist to steer back and forth out of a straight travel path

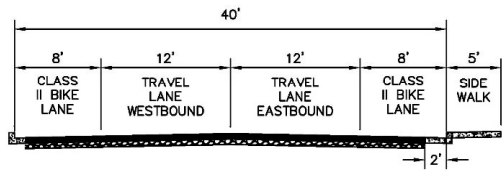
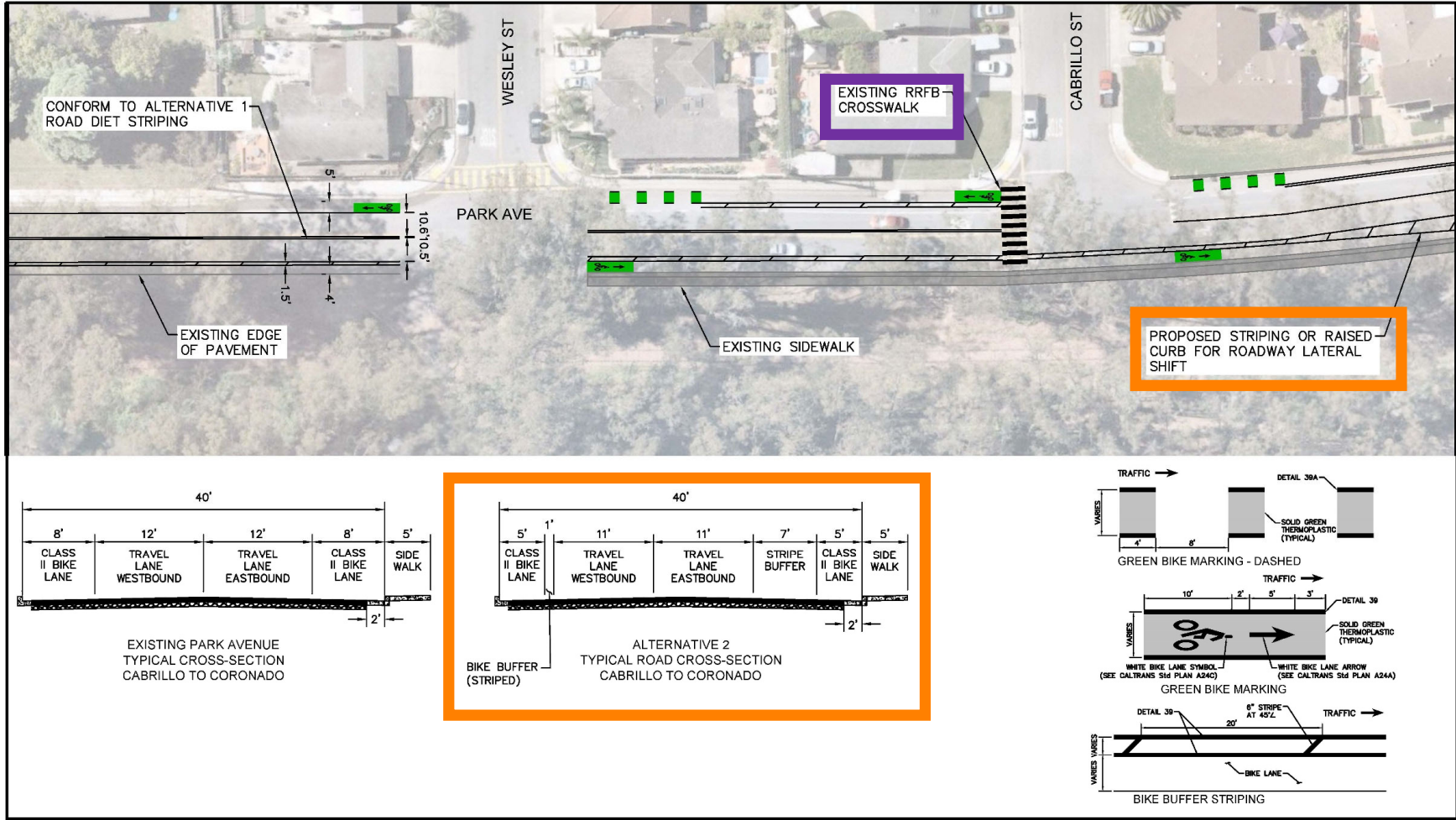
Benefits

- Slight reduction in vehicle speeds
- Opportunities for landscaping with raised features

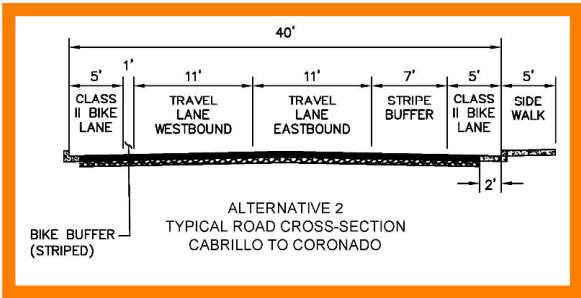
Drawbacks

- May require removal of on-street parking
- Potential impacts to existing drainage and utilities

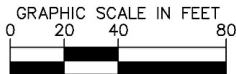
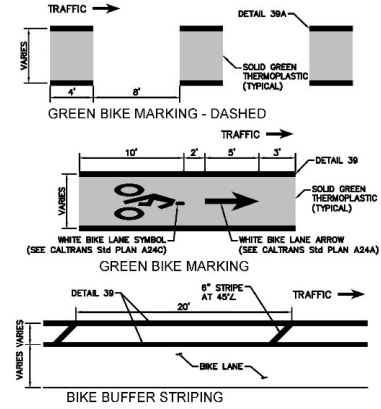




EXISTING PARK AVENUE
TYPICAL CROSS-SECTION
CABRILLO TO CORONADO



ALTERNATIVE 2
TYPICAL ROAD CROSS-SECTION
CABRILLO TO CORONADO

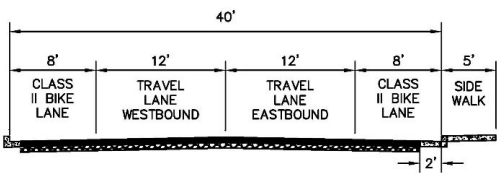
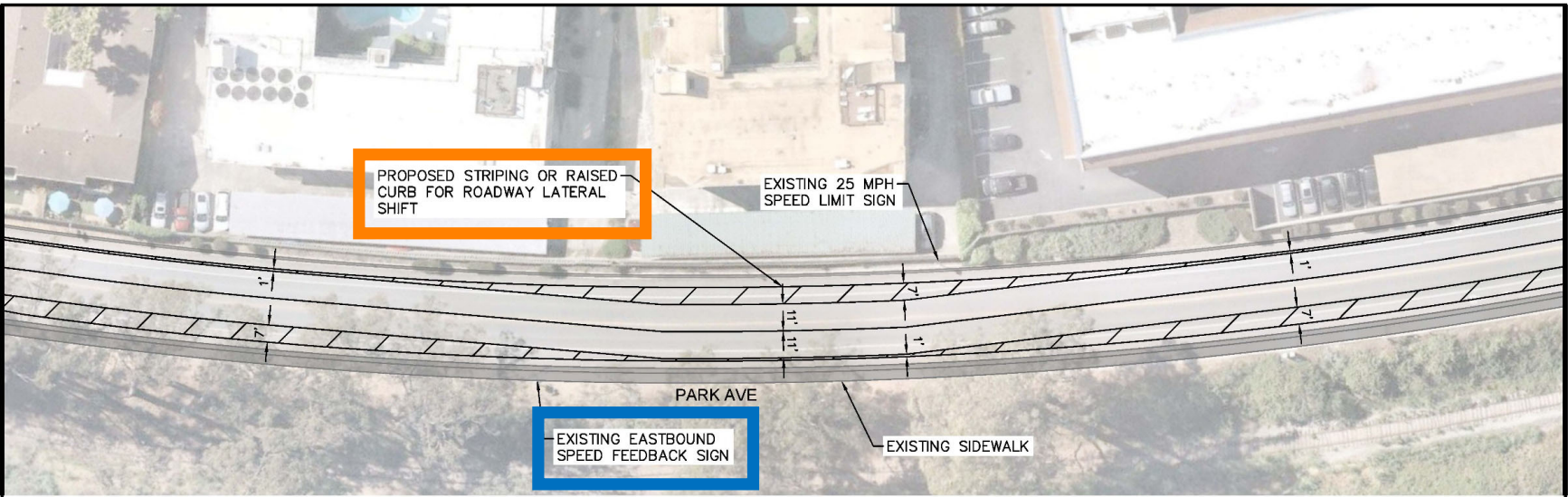


CONCEPT LAYOUT FOR
PLANNING PURPOSES.
NOT FOR CONSTRUCTION

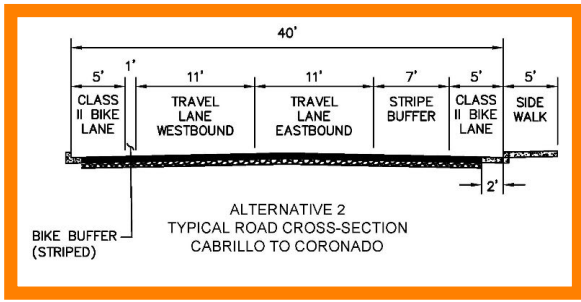


MATCHLINE

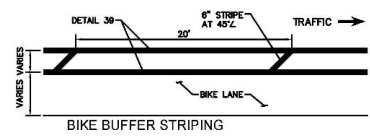
MATCHLINE - SEE BELOW

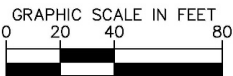
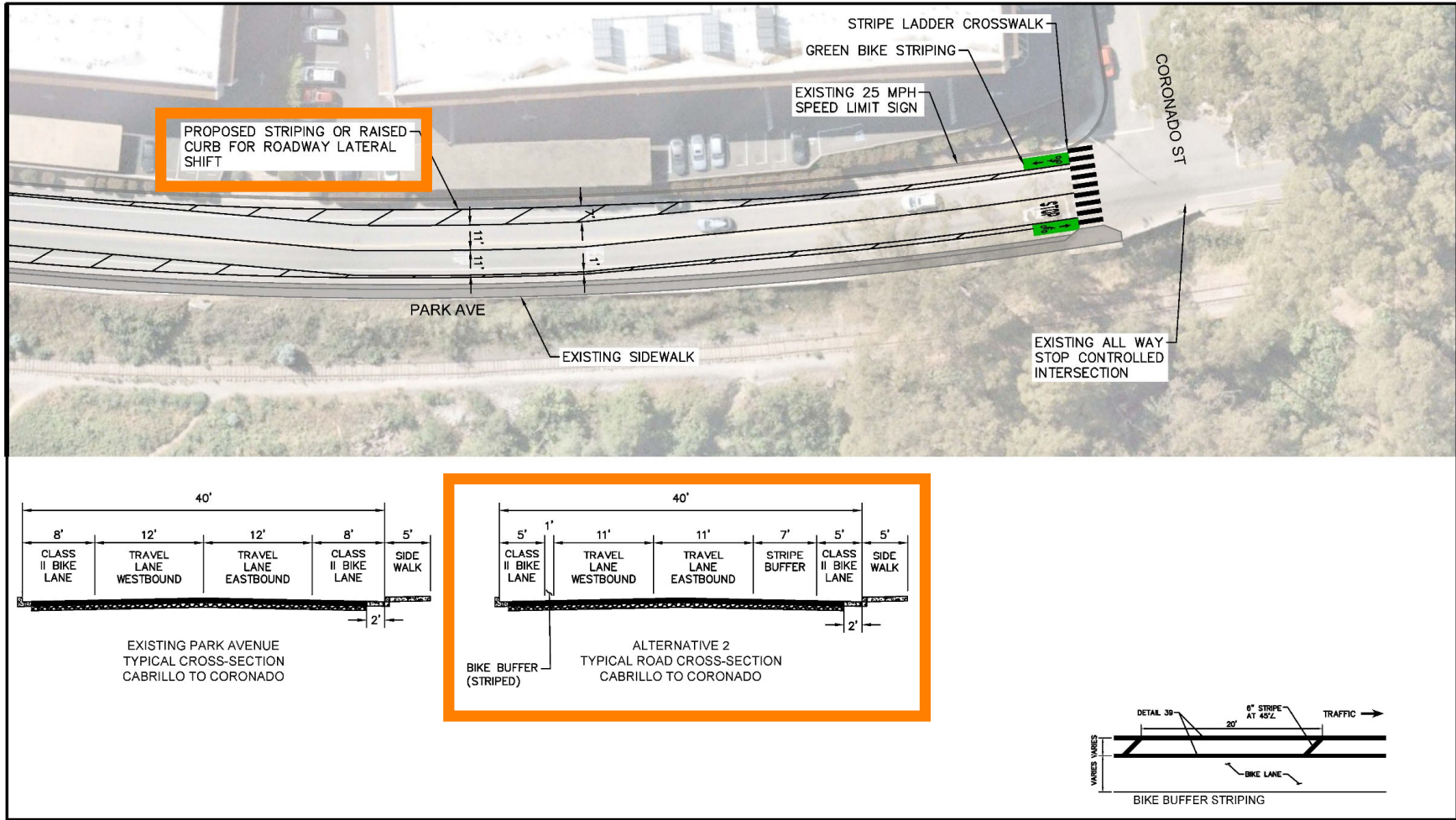


EXISTING PARK AVENUE
TYPICAL CROSS-SECTION
CABRILLO TO CORONADO



ALTERNATIVE 2
TYPICAL ROAD CROSS-SECTION
CABRILLO TO CORONADO

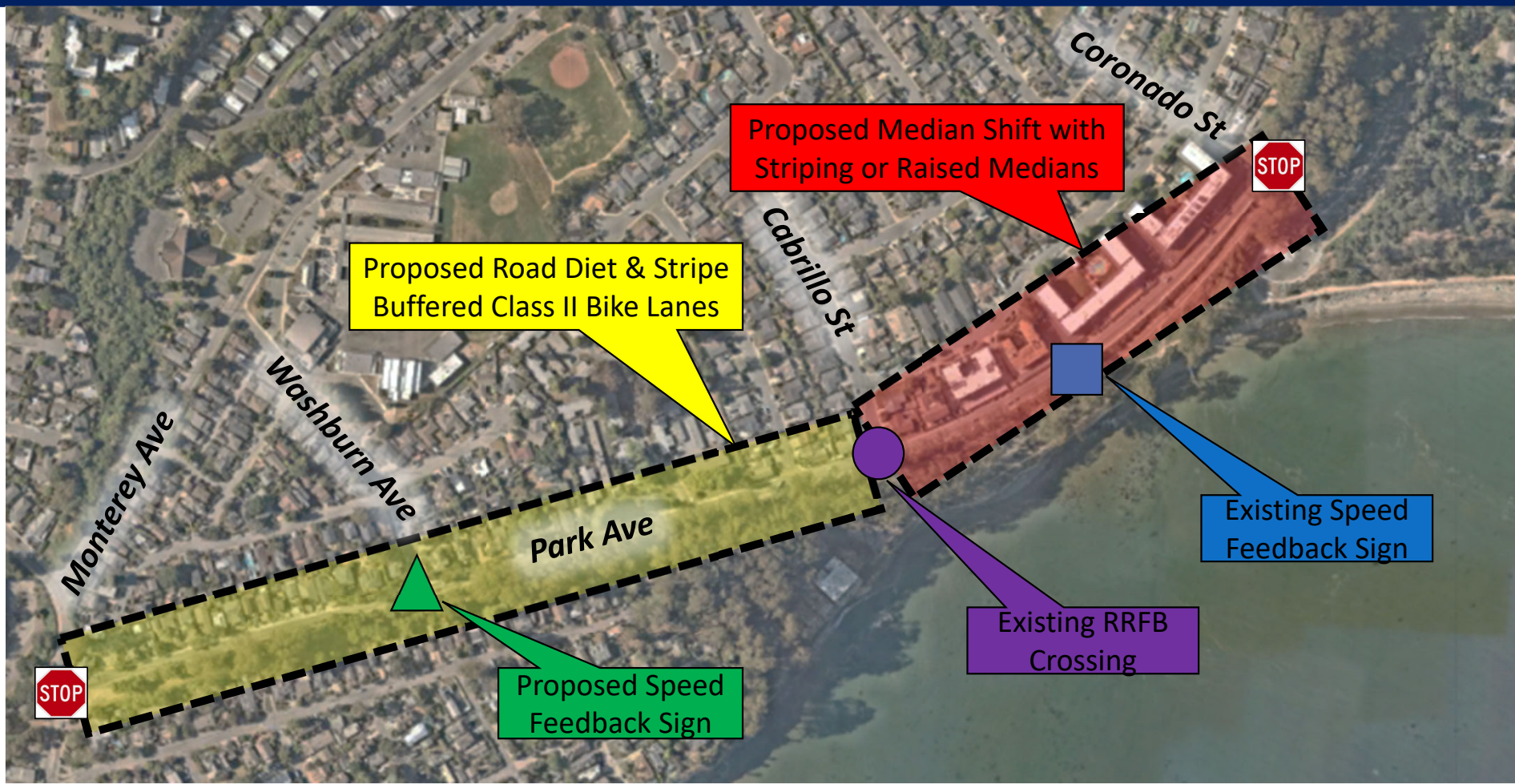




CONCEPT LAYOUT FOR PLANNING PURPOSES.
NOT FOR CONSTRUCTION

Park Avenue

Alternative 3 – Road Diet & Median Shift



Park Avenue Median Shift

Horizontal deflection consisting of a series of median features in the roadway center to force a merging and diverging path of travel for each direction

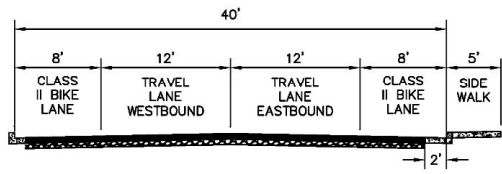
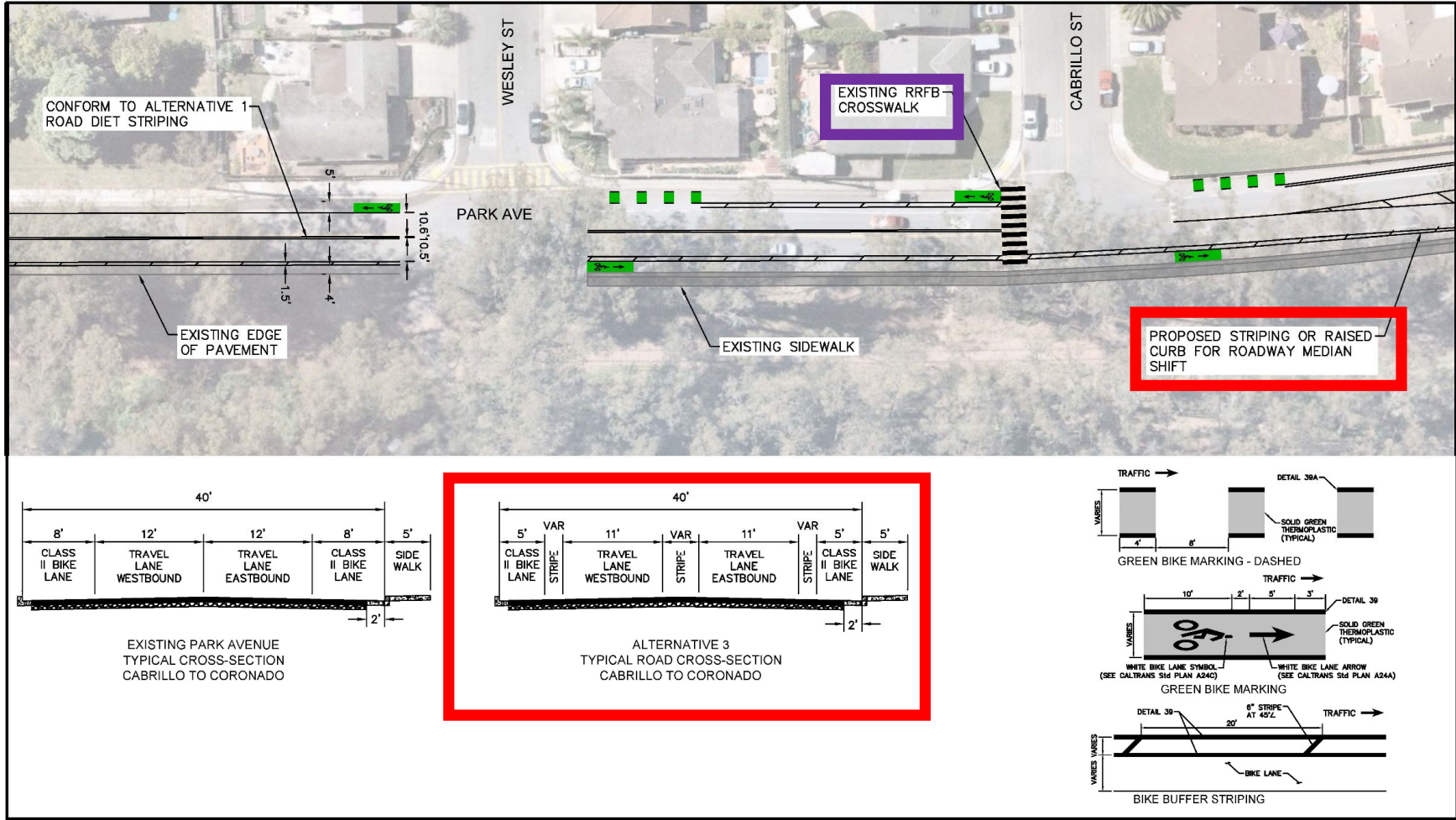
Benefits

- Slight reduction in vehicle speeds
- Opportunities for landscaping with raised features

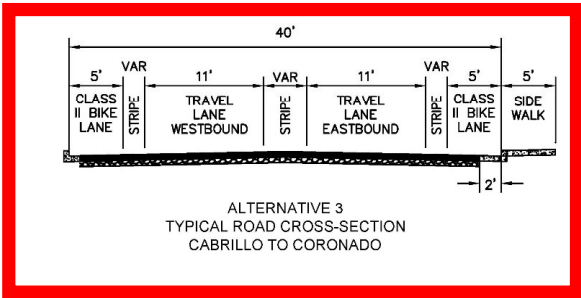
Drawbacks

- May require removal of on-street parking
- Potential impacts to existing drainage and utilities

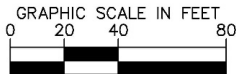
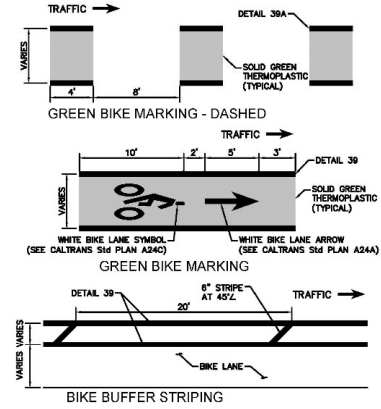




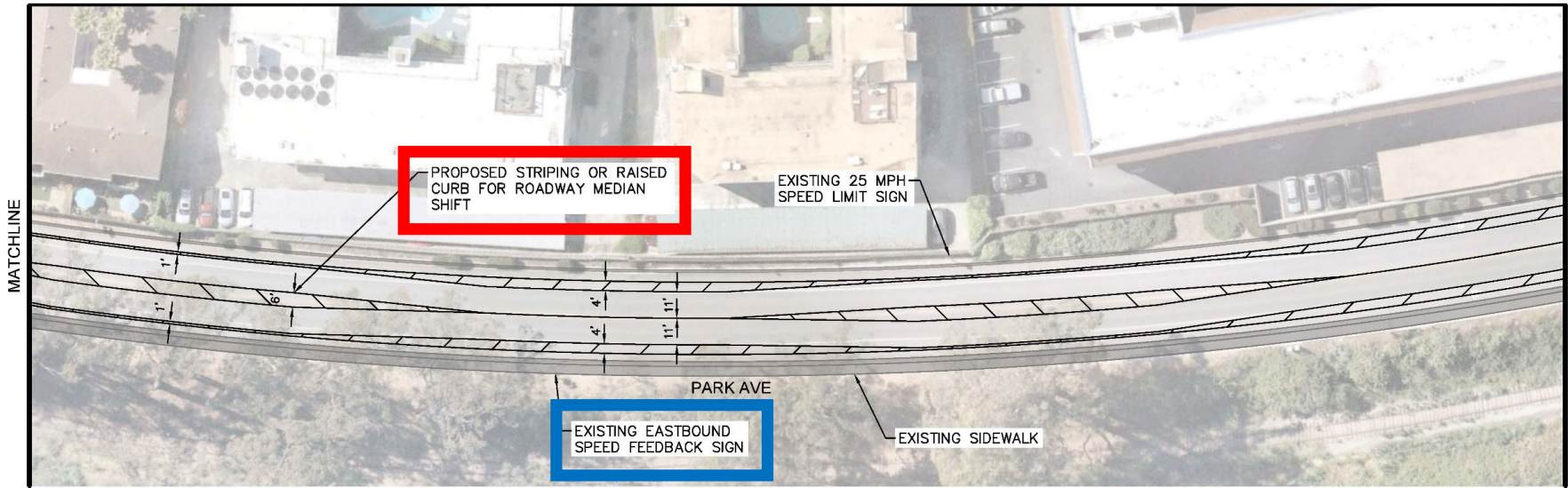
EXISTING PARK AVENUE
TYPICAL CROSS-SECTION
CABRILLO TO CORONADO



ALTERNATIVE 3
TYPICAL ROAD CROSS-SECTION
CABRILLO TO CORONADO

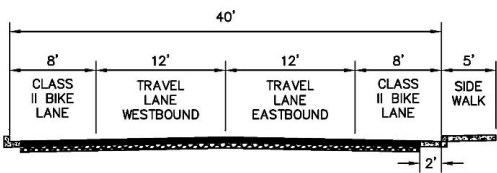


CONCEPT LAYOUT FOR
PLANNING PURPOSES.
NOT FOR CONSTRUCTION

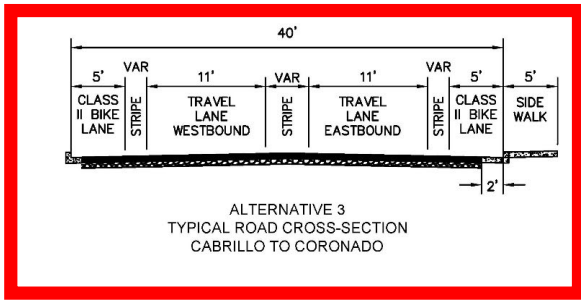


MATCHLINE

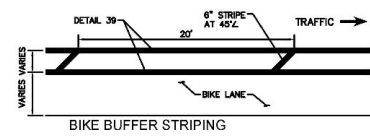
MATCHLINE - SEE BELOW



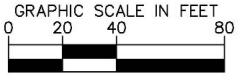
EXISTING PARK AVENUE
TYPICAL CROSS-SECTION
CABRILLO TO CORONADO



ALTERNATIVE 3
TYPICAL ROAD CROSS-SECTION
CABRILLO TO CORONADO



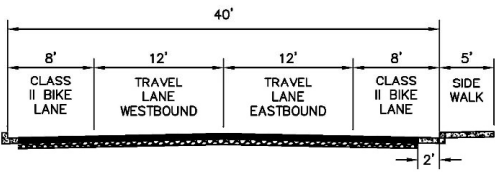
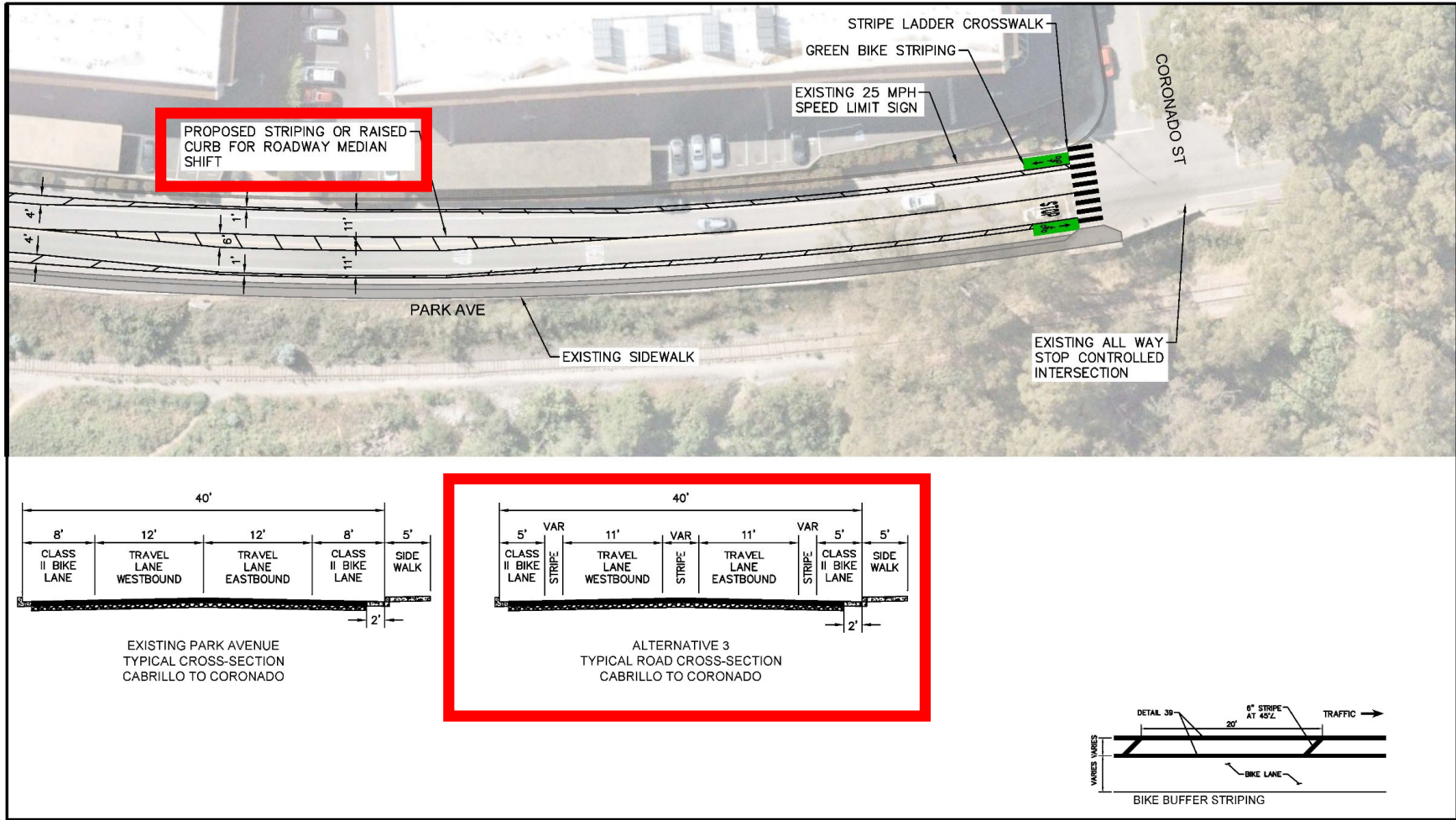
Kimley»Horn



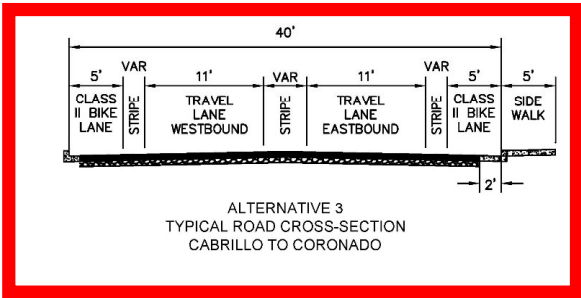
CONCEPT LAYOUT FOR
PLANNING PURPOSES.
NOT FOR CONSTRUCTION

**ALTERNATIVE 3 - MEDIAN SHIFT
PROPOSED TC LAYOUT - SHEET 5**

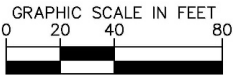
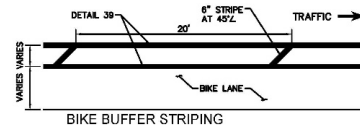
CITY OF CAPITOLA - PARK AVENUE TRAFFIC CALMING



EXISTING PARK AVENUE
TYPICAL CROSS-SECTION
CABRILLO TO CORONADO



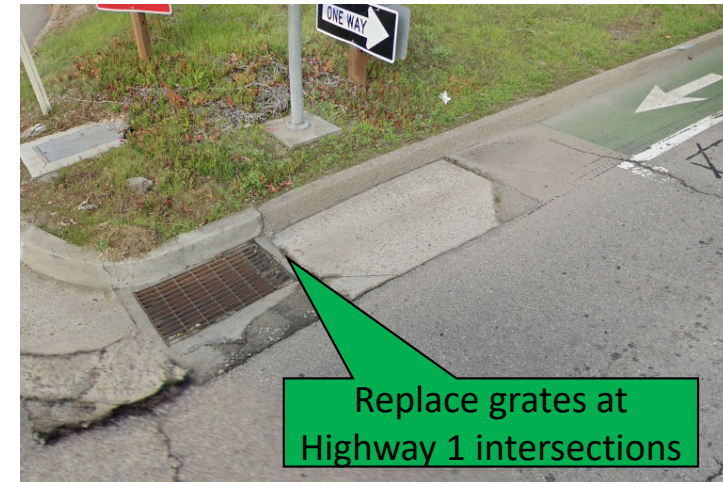
ALTERNATIVE 3
TYPICAL ROAD CROSS-SECTION
CABRILLO TO CORONADO



CONCEPT LAYOUT FOR
PLANNING PURPOSES.
NOT FOR CONSTRUCTION

Park Avenue Additional Bicycle Features

- Existing Class II bike lanes would be restriped
- Addition of striped buffered bike lanes
- Addition of green pavement markings in conflict zones
- Reconstruct pavement sections and install bike friendly drainage grates



Park Avenue Estimated Project Schedule



Timeline	Milestone
Summer 2024	Complete Engineering Design
Fall 2024	Bid Project for Construction
Winter 2024 – Spring 2025	Construct Project



Park Avenue Community Survey

We want your input. Please complete a survey for the proposed Park Avenue Traffic Calming improvements.

https://www.surveymonkey.com/r/capitola_park_tc1

QR Code Link



Park Avenue Next Steps



- Collect workshop and survey responses from community
- Refine project design based on public comments and direction from City
- Coordinate project with utilities and stakeholders
- Complete engineering plans



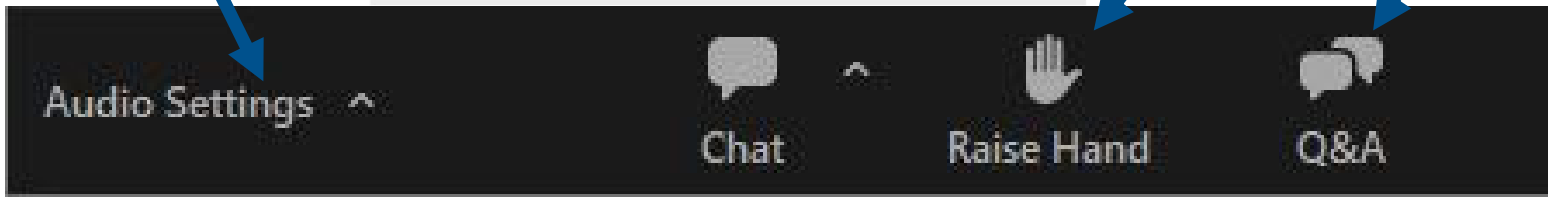
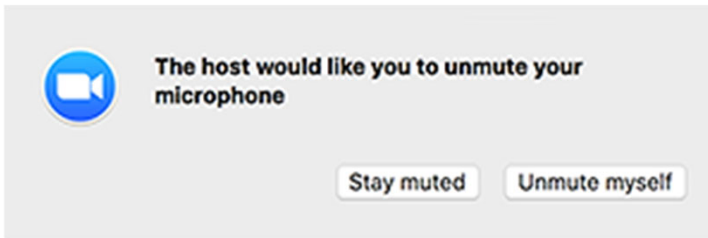
Park Avenue Open Discussion

Audio Settings: Change your [audio settings](#). You can also click the upward arrow (^) next to change your speaker.

Unmute/Mute: When the host gives you permission, you can unmute and all participants will be able to hear you talk. If the host allows you to talk, you will receive this notification - **click “unmute myself”**

Raise Hand: [Raise your hand](#) in the webinar to indicate that you want to make a verbal comment. Function is under Reactions.

Question & Answer: Open the chat window, allowing you to ask questions only to the host. The host will collect these questions and respond after the meeting.



SurveyMonkey Link
https://www.surveymonkey.com/r/capitola_park_tc1





THANK YOU!



Kimley»»Horn



Frederik Venter & Derek Wu

Jessica Kahn & Kailash Mozumder

Park Avenue

