



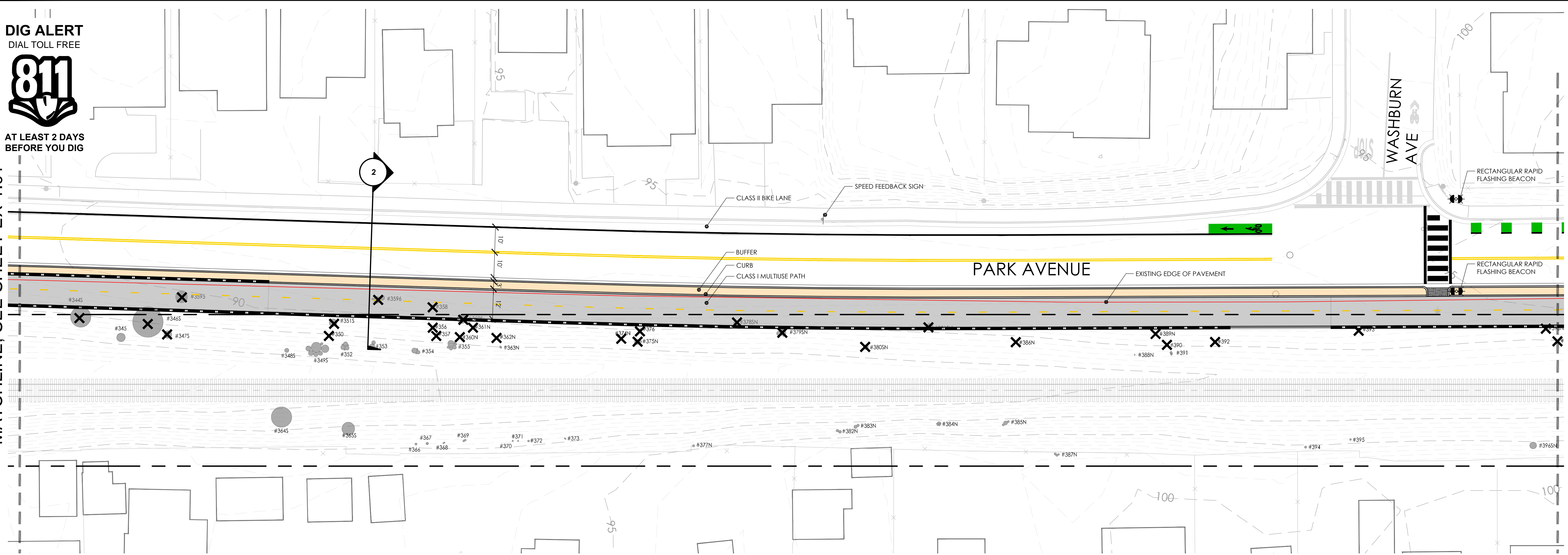


DIG ALERT  
DIAL TOLL FREE

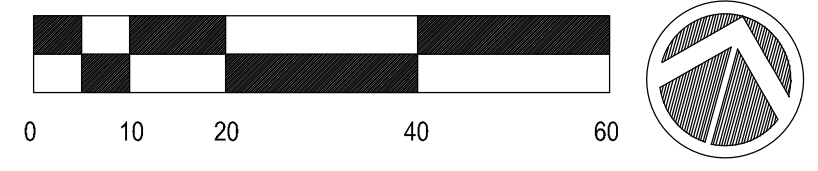


AT LEAST 2 DAYS  
BEFORE YOU DIG

MATCHLINE, SEE SHEET EX-1.01

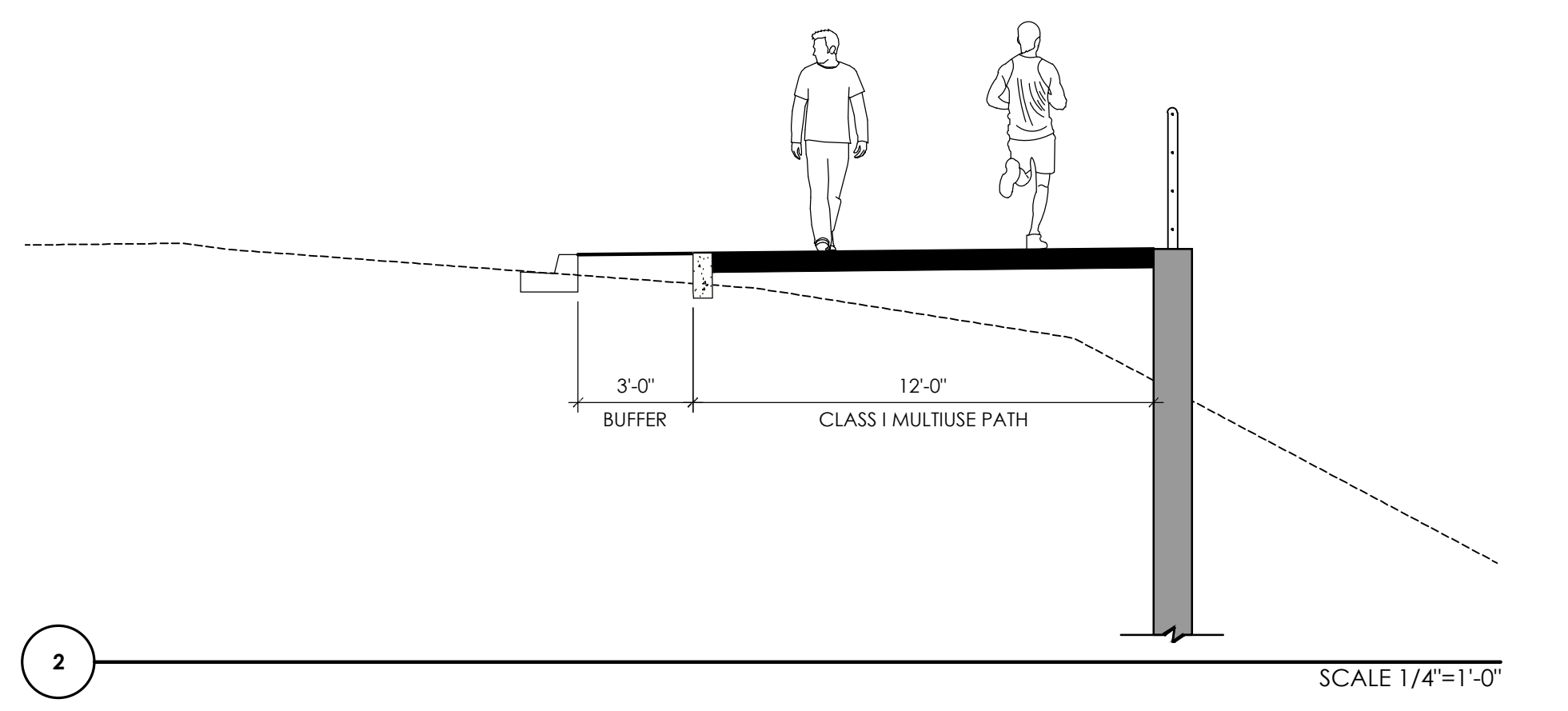


MATCHLINE, SEE SHEET EX-1.03



LEGEND

SYMBOL	DESCRIPTION
	SCCRTC RIGHT OF WAY
	EXISTING FENCE
	EXISTING EDGE OF PAVEMENT
	RETAINING WALL
	TRAIL BUFFER
	CLASS I MULTIUSE PATH
	CONCRETE PAVEMENT
	TREE REMOVAL



SCALE 1/4"=1'-0"

Layout File Name: EX-1.02; Images: county-logos-bbox=transportation; ...

**PRELIMINARY  
NOT FOR CONSTRUCTION**

rrmdesign.com | (949) 361-7950  
30332 Camino Capistrano, Ste. 205  
San Juan Capistrano, CA 92675

REVISIONS	

**COUNTY OF  
SANTACRUZ**  
DEPARTMENT OF PUBLIC WORKS  
701 Ocean Street, Room 410  
Santa Cruz, CA 95060

**RAIL TRAIL SEGMENTS 10 & 11**  
MONTEREY TO CORONADO SCHEMATIC DESIGN ALTERNATIVES  
OPTION A

REFERENCES FIELD BOOK: DRAWING #:	DATE	01/21/2025	SCALE	AS SHOWN
	DRAWN	MS	EX-1.02	
	DESIGN	KS/MS	VAULT NO.	
	CHECKED	MS		

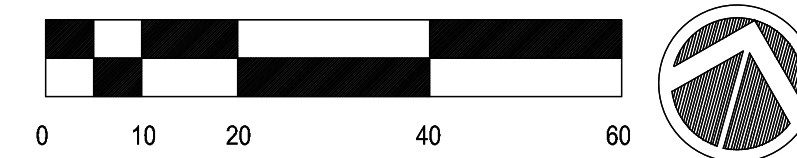
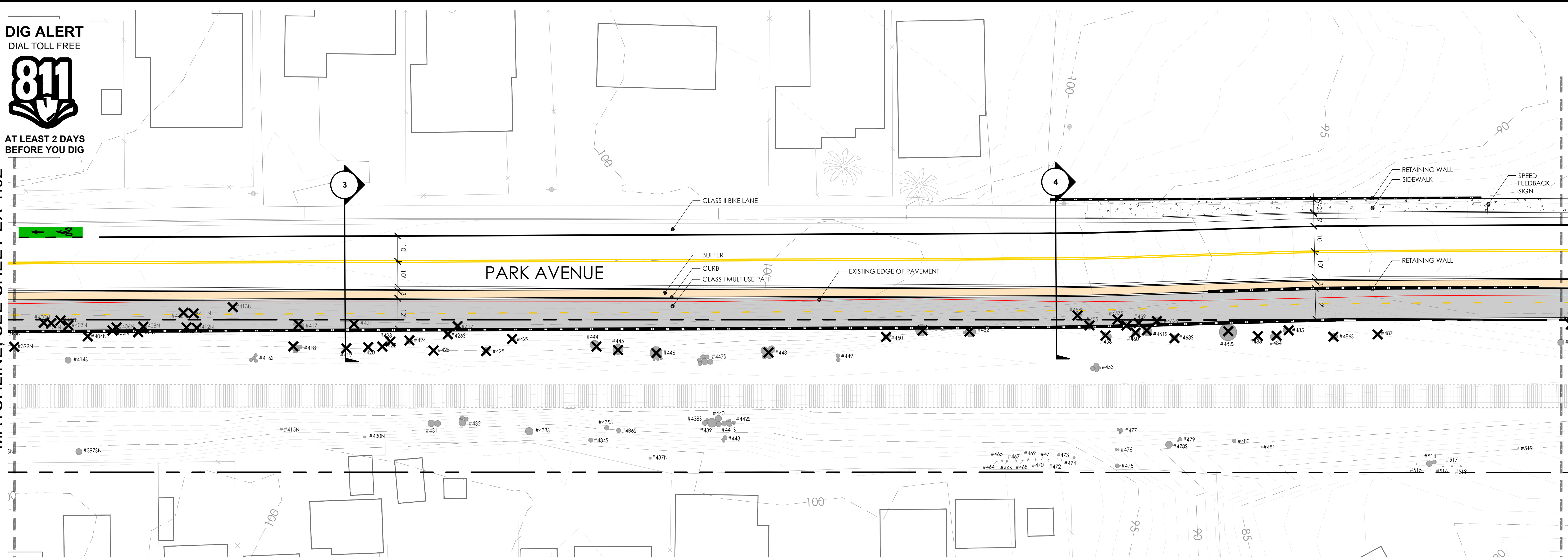
DIG ALERT  
DIAL TOLL FREE



AT LEAST 2 DAYS  
BEFORE YOU DIG

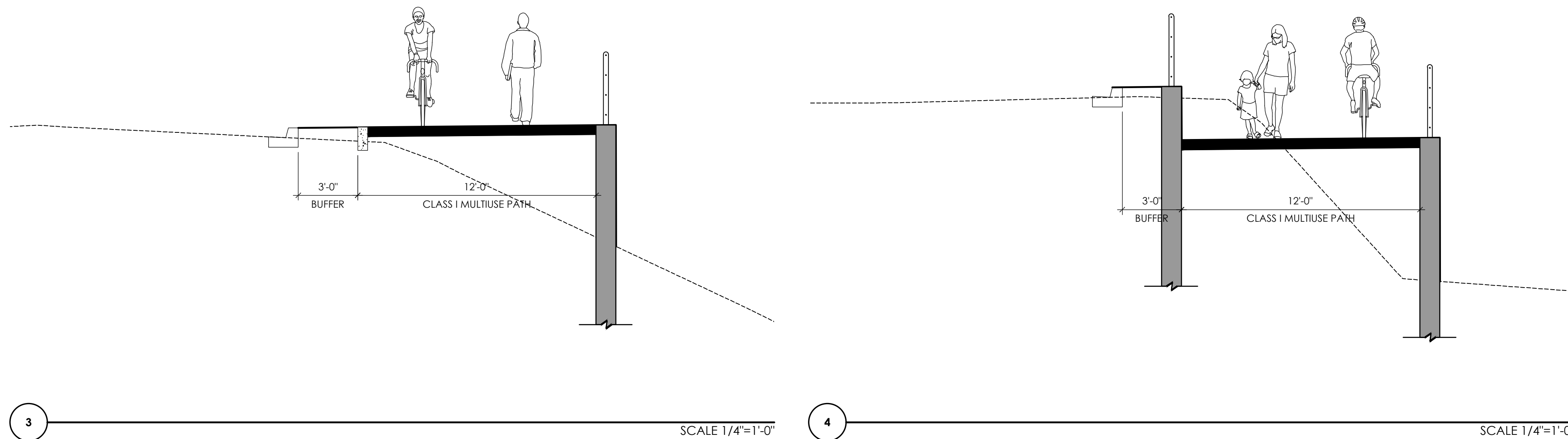
MATCHLINE, SEE SHEET EX-1.02

MATCHLINE, SEE SHEET EX-1.04



**LEGEND**

SYMBOL	DESCRIPTION
	SCCRTC RIGHT OF WAY
	EXISTING FENCE
	EXISTING EDGE OF PAVEMENT
	RETAINING WALL
	TRAIL BUFFER
	CLASS I MULTIUSE PATH
	CONCRETE PAVEMENT
	TREE REMOVAL



3

4

SCALE 1/4"=1'-0"

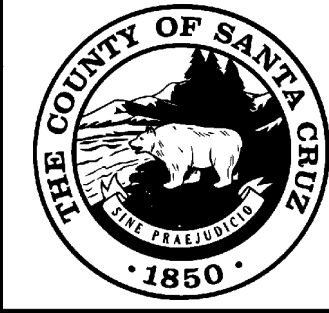
SCALE 1/4"=1'-0"

PRELIMINARY  
NOT FOR CONSTRUCTION



**REVISIONS**

NO.	DATE	DESCRIPTION



**COUNTY OF  
SANTACRUZ**  
DEPARTMENT OF PUBLIC WORKS  
701 Ocean Street, Room 410  
Santa Cruz, CA 95060

**RAIL TRAIL SEGMENTS 10 & 11**  
MONTEREY TO CORONADO SCHEMATIC DESIGN ALTERNATIVES  
OPTION A

REFERENCES  
FIELD BOOK:  
DRAWING #:

DATE	01/21/2025
DRAWN	MS
DESIGN	KS/MS
CHECKED	MS

SCALE	AS SHOWN
	<b>EX-1.03</b>
Vault No.	













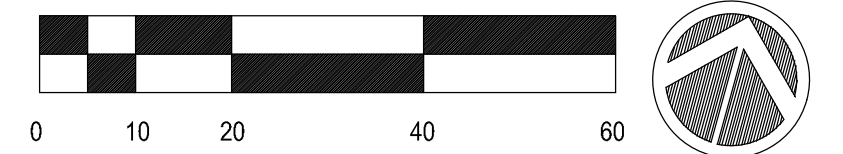
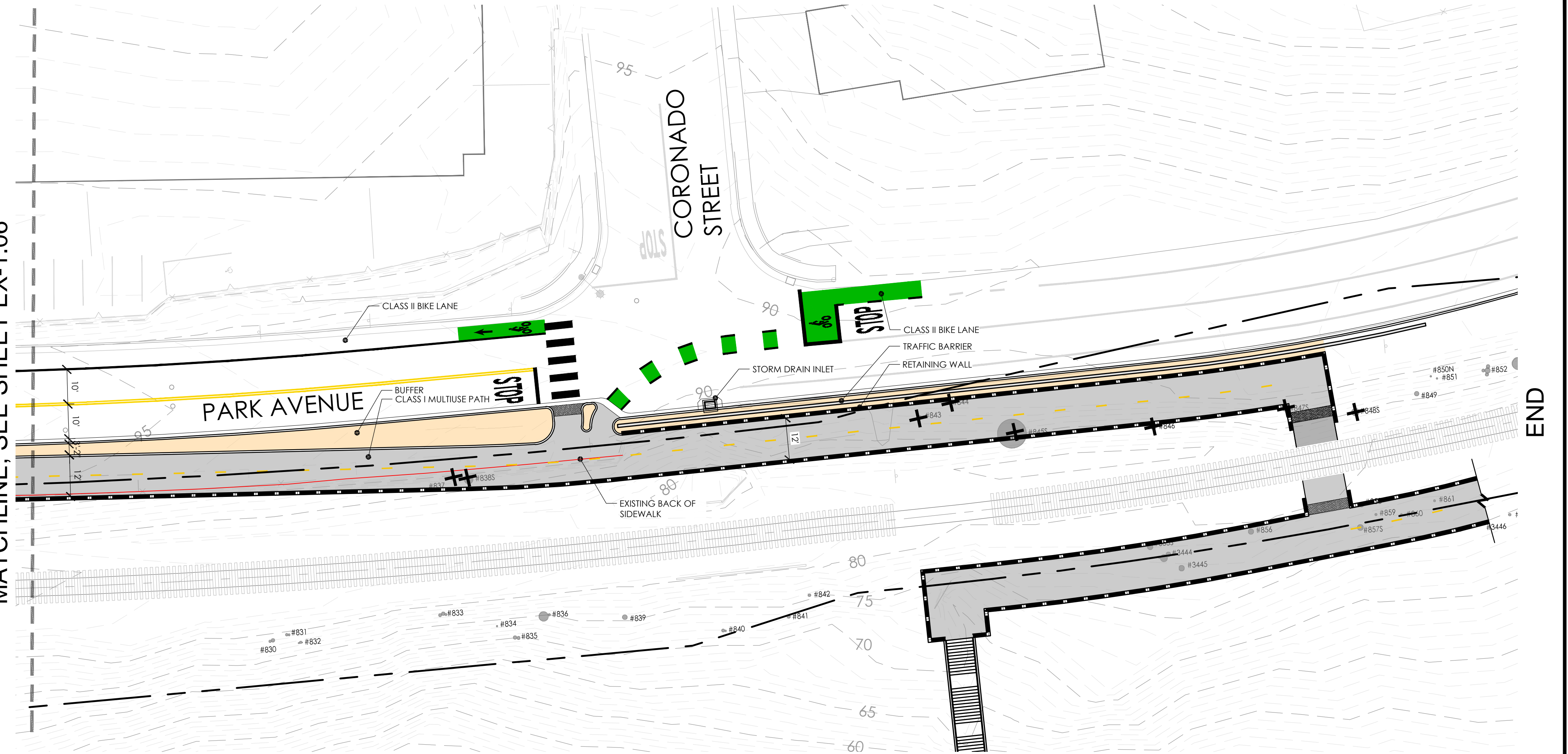


DIG ALERT  
DIAL TOLL FREE



AT LEAST 2 DAYS  
BEFORE YOU DIG

MATCHLINE, SEE SHEET EX-1.06



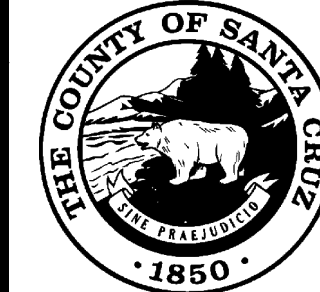
LEGEND

SYMBOL	DESCRIPTION
	SCCRTC RIGHT OF WAY
	EXISTING FENCE
	EXISTING EDGE OF PAVEMENT
	RETAINING WALL
	TRAIL BUFFER
	CLASS I MULTIUSE PATH
	CONCRETE PAVEMENT
	TREE REMOVAL

PRELIMINARY  
NOT FOR CONSTRUCTION



REVISIONS



COUNTY OF  
**SANTACRUZ**  
DEPARTMENT OF PUBLIC WORKS  
701 Ocean Street, Room 410  
Santa Cruz, CA 95060

**RAIL TRAIL SEGMENTS 10 & 11**  
MONTEREY TO CORONADO SCHEMATIC DESIGN ALTERNATIVES  
OPTION A

REFERENCES  
FIELD BOOK:  
DRAWING #:

DATE	01/21/2025	SCALE	AS SHOWN
DRAWN	MS	EX-1.07	
DESIGN	KS/MS	VAULT NO.	
CHECKED	MS		