

Approximate Fence Alignment

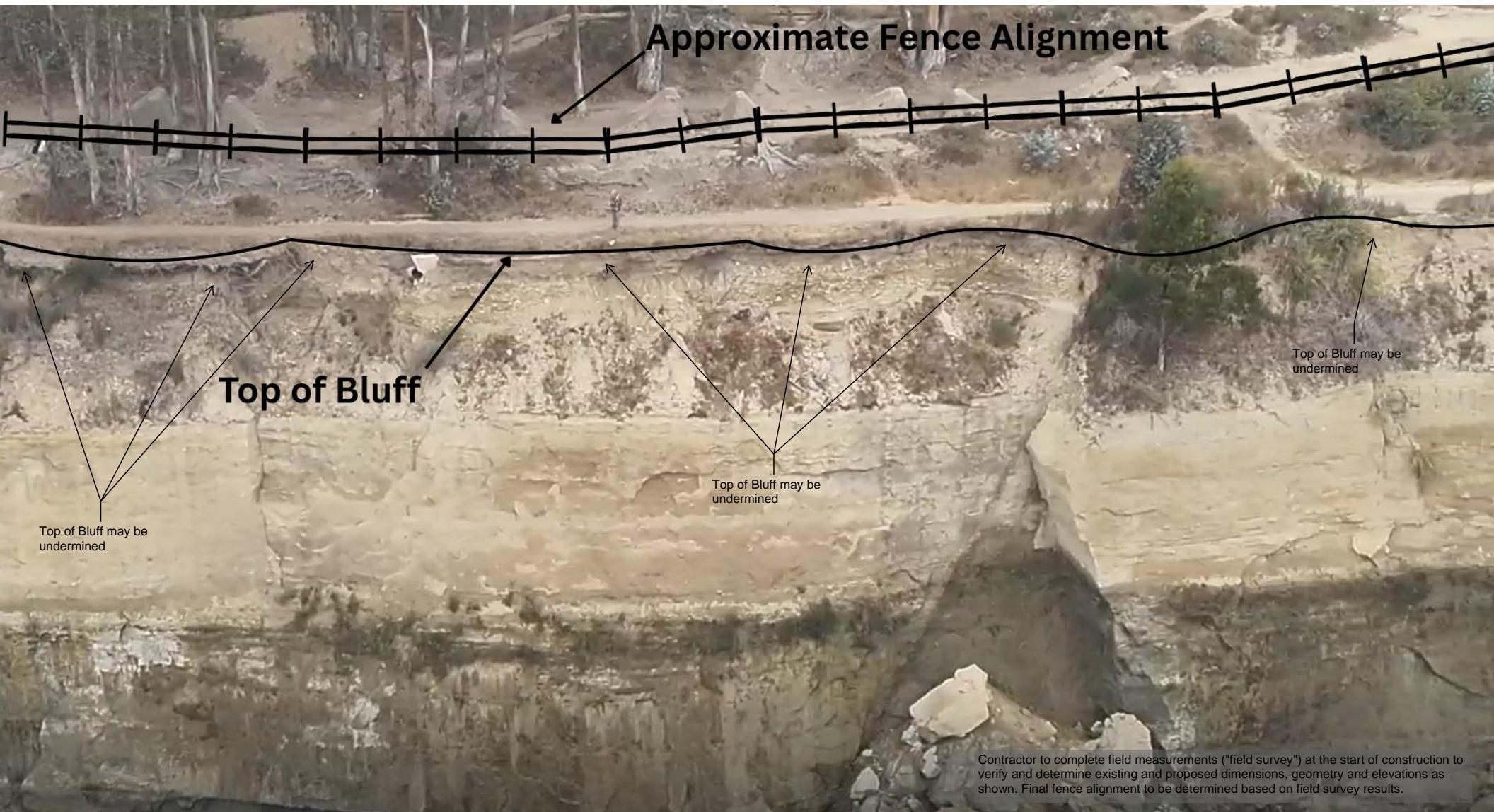
Top of Bluff

Top of Bluff may be undermined

Top of Bluff may be undermined

Top of Bluff may be undermined

Contractor to complete field measurements ("field survey") at the start of construction to verify and determine existing and proposed dimensions, geometry and elevations as shown. Final fence alignment to be determined based on field survey results.



Approximate Fence Alignment

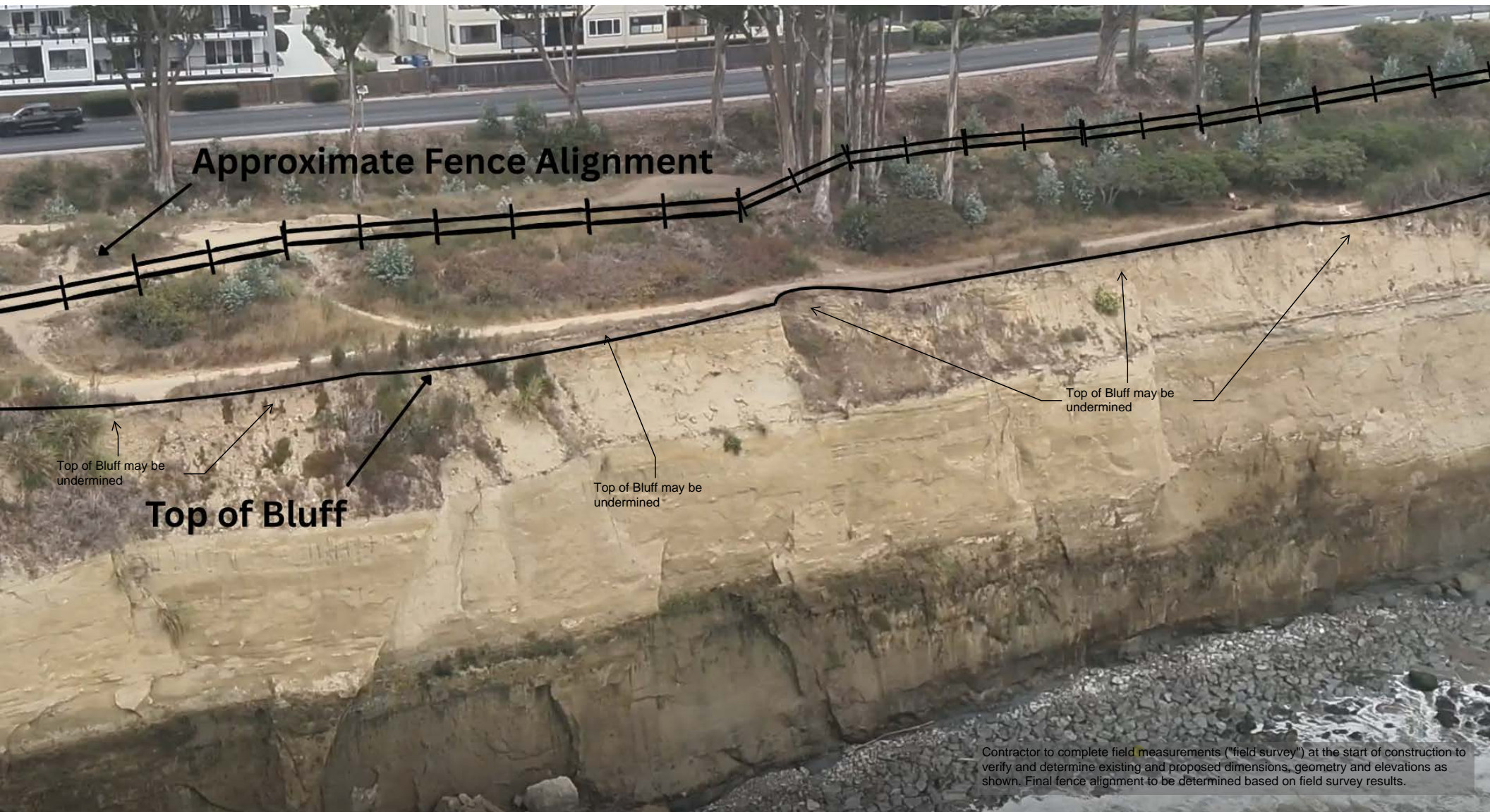
Top of Bluff

Top of Bluff may be undermined

Top of Bluff may be undermined

Top of Bluff may be undermined

Contractor to complete field measurements ("field survey") at the start of construction to verify and determine existing and proposed dimensions, geometry and elevations as shown. Final fence alignment to be determined based on field survey results.



Approximate Fence Alignment

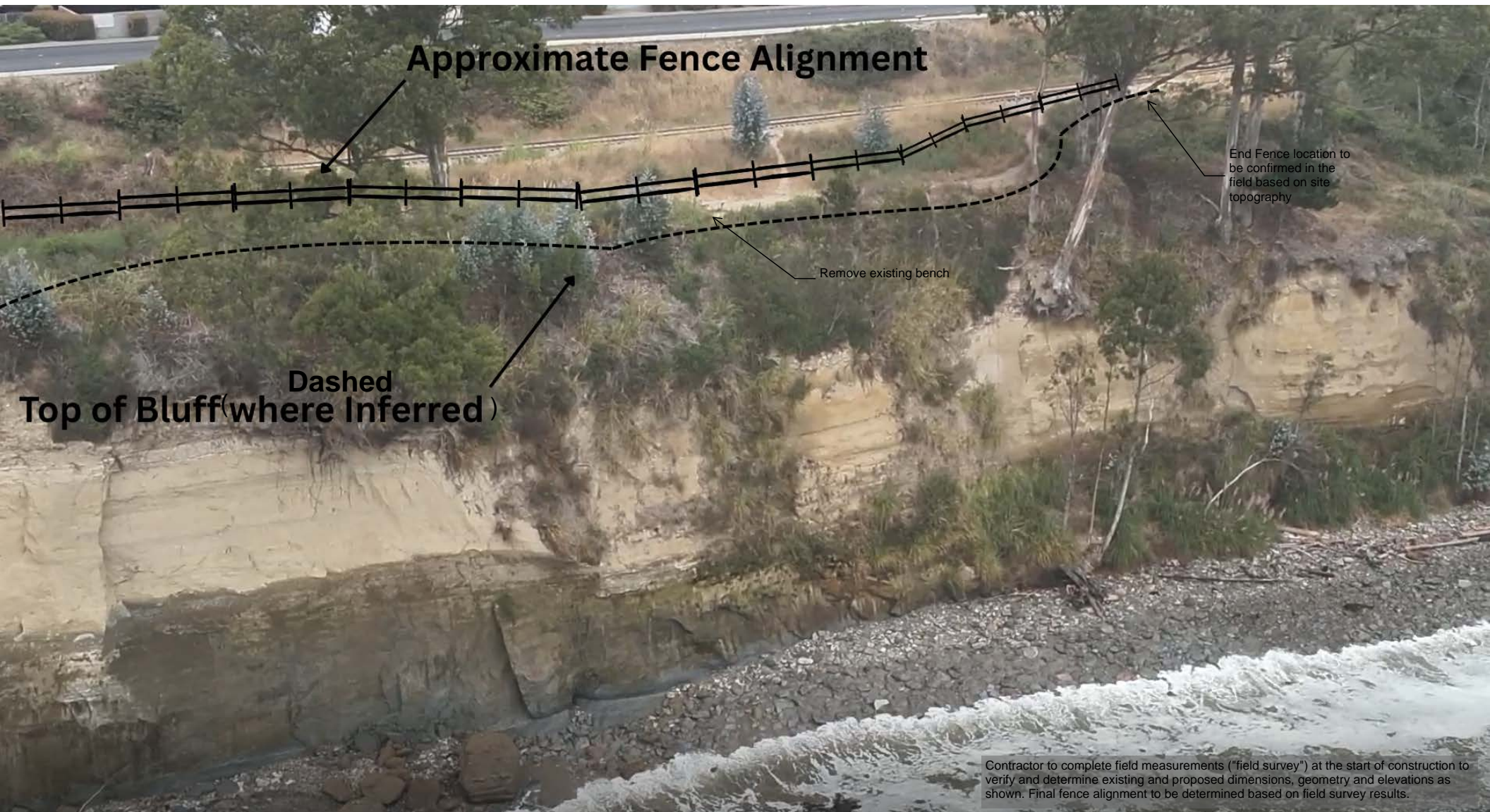
Top of Bluff may be undermined

Top of Bluff

Top of Bluff may be undermined

Top of Bluff may be undermined

Contractor to complete field measurements ("field survey") at the start of construction to verify and determine existing and proposed dimensions, geometry and elevations as shown. Final fence alignment to be determined based on field survey results.



Approximate Fence Alignment

End Fence location to be confirmed in the field based on site topography

Remove existing bench

**Dashed
Top of Bluff (where Inferred)**

Contractor to complete field measurements ("field survey") at the start of construction to verify and determine existing and proposed dimensions, geometry and elevations as shown. Final fence alignment to be determined based on field survey results.