



## Legend

- Sign Post Locations
- End Point
- Start Point
- Access Point
- ▨ Contractors Staging Area
- Rail Line
- Split Rail Fence Alignment
- Top of Bluff ( Dashed where Inferred )

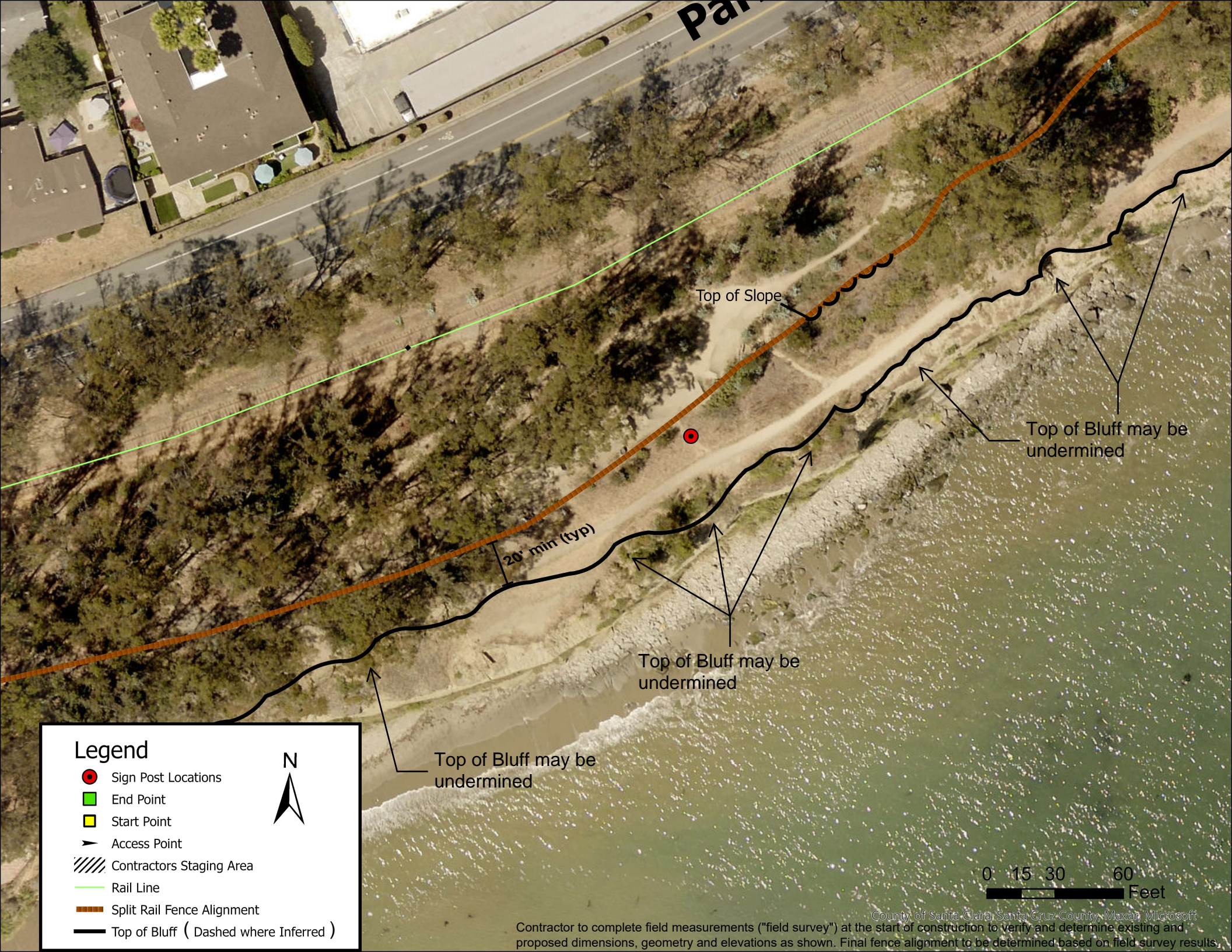


Top of Bluff may be undermined

0 15 30 60  
Feet

County of Santa Clara, Santa Cruz County, Maxar, Microsoft  
Contractor to complete field measurements ("field survey") at the start of construction to verify and determine existing and proposed dimensions, geometry and elevations as shown. Final fence alignment to be determined based on field survey results.





Part

Top of Slope

Top of Bluff may be undermined

Top of Bluff may be undermined

Top of Bluff may be undermined

20' min (typ)

### Legend

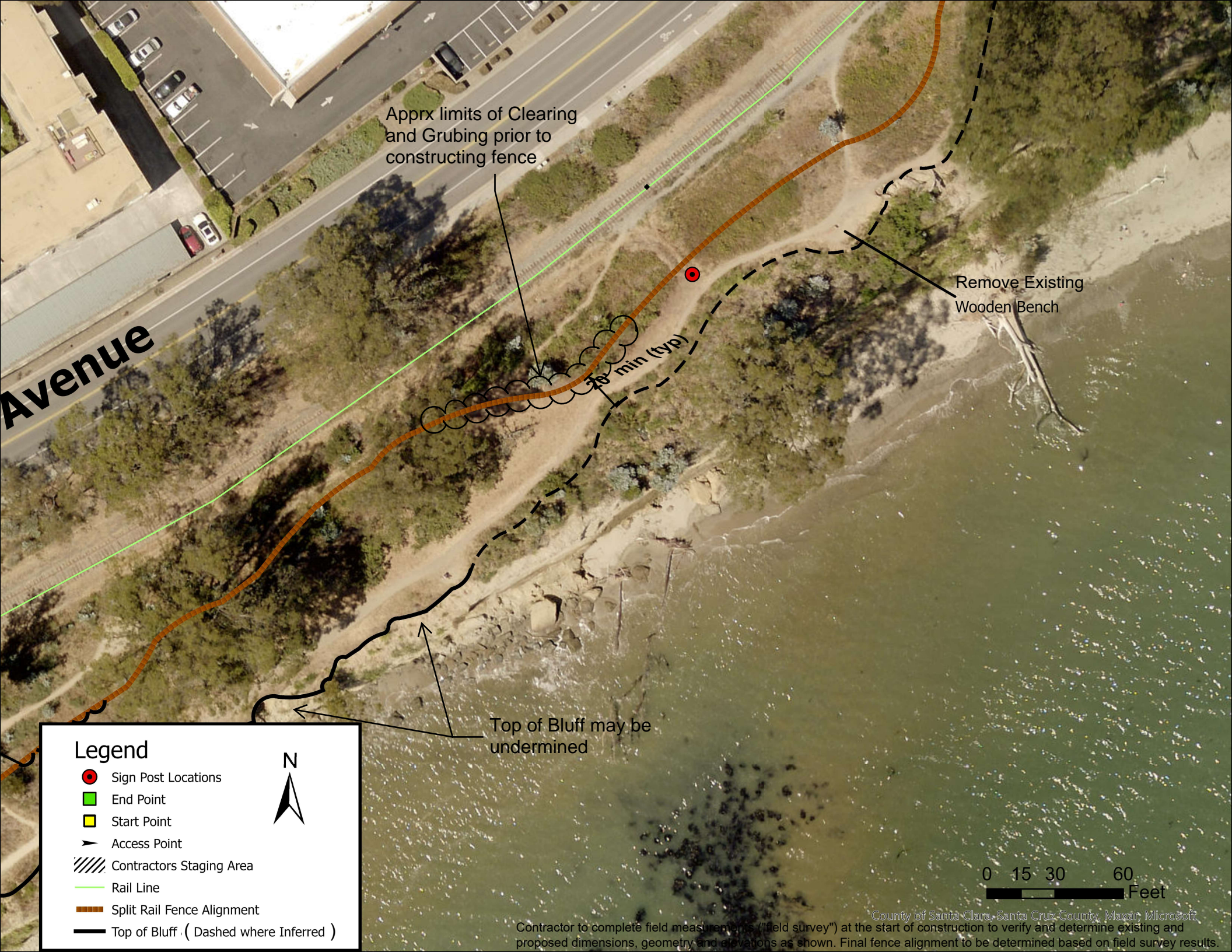
- Sign Post Locations
- End Point
- Start Point
- Access Point
- ▨ Contractors Staging Area
- Rail Line
- Split Rail Fence Alignment
- Top of Bluff ( Dashed where Inferred )



0 15 30 60 Feet

Contractor to complete field measurements ("field survey") at the start of construction to verify and determine existing and proposed dimensions, geometry and elevations as shown. Final fence alignment to be determined based on field survey results.





Apprx limits of Clearing  
and Grubing prior to  
constructing fence

Remove Existing  
Wooden Bench

Avenue

10 min (typ)

Top of Bluff may be  
undermined

Legend

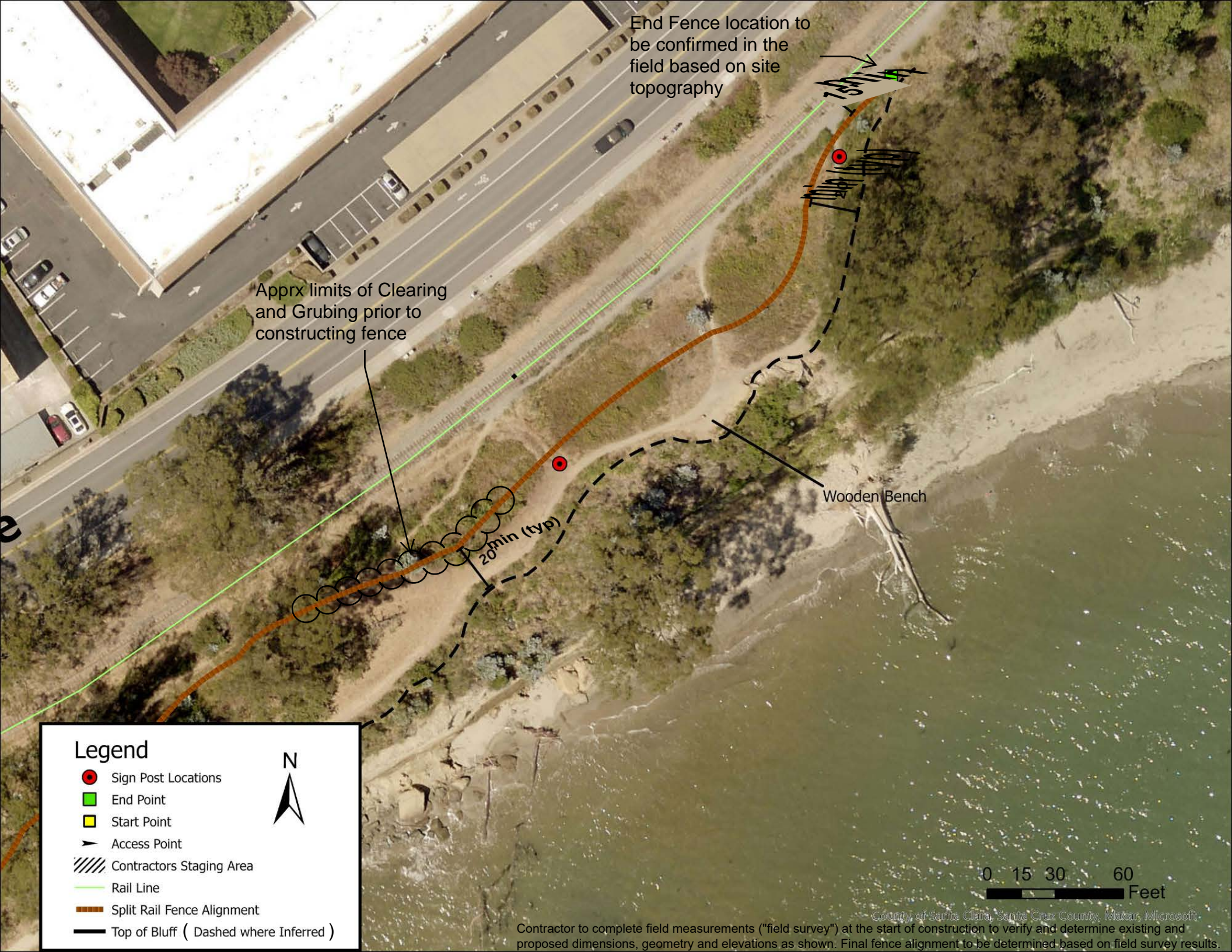
- Sign Post Locations
- End Point
- Start Point
- Access Point
- ▨ Contractors Staging Area
- Rail Line
- Split Rail Fence Alignment
- Top of Bluff ( Dashed where Inferred )



0 15 30 60  
Feet

County of Santa Clara, Santa Cruz County, Maxar, Microsoft  
Contractor to complete field measurements ("field survey") at the start of construction to verify and determine existing and  
proposed dimensions, geometry and elevations as shown. Final fence alignment to be determined based on field survey results.





End Fence location to be confirmed in the field based on site topography

Apprx limits of Clearing and Grubbing prior to constructing fence

Wooden Bench

20 min (typ)

# Legend

- Sign Post Locations
- End Point
- Start Point
- Access Point
- ▨ Contractors Staging Area
- Rail Line
- Split Rail Fence Alignment
- Top of Bluff ( Dashed where Inferred )



0 15 30 60 Feet

County of Santa Clara, Santa Cruz County, Maxar, Microsoft  
Contractor to complete field measurements ("field survey") at the start of construction to verify and determine existing and proposed dimensions, geometry and elevations as shown. Final fence alignment to be determined based on field survey results.