



036-141-07

ESCALONA AV

Property Line

036-142-20

Approximate well location

Drill Rig

Shaker

Water Truck

Temp Fencing with Sound blanket

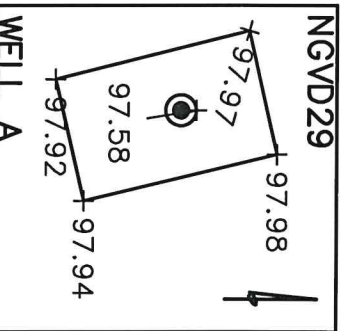
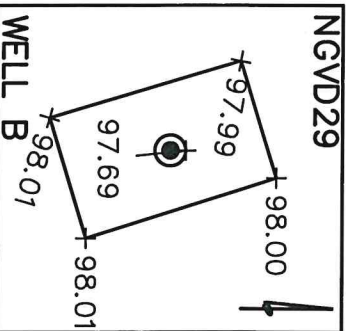
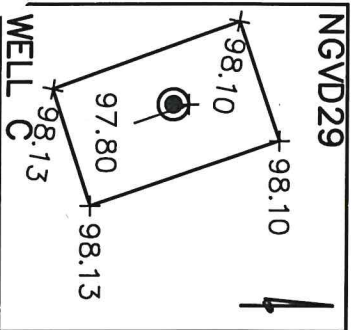
036-142-31

35 FT  
30 FT  
8 FT  
8 FT  
10 FT  
8 FT



# NOTE:

THE BOUNDARY AND IMPROVEMENTS WERE NOT LOCATED BY GROUND SURVEY METHODS. THEY ARE SHOWN BASED ON THE SANTA CRUZ COUNTY GIS INFORMATION AND ARE FOR REFERENCE PURPOSES TO AID IN THE LOCATION OF MONITORING WELL SC-3R.



**SITE BENCHMARK**  
SET SPIKE IN JOINT POLE  
ELEV=97.85' NGVD29  
ELEV=100.60' NAVD88  
N=1817090.23  
E=6139577.85



## LEGEND

- MONITORING WELL
- MONITORING WELL BOX
- REFERENCE POINT (MAG NAIL)

ELEVATION ARE IN FEET  
AND DECIMALS THEREOF

## MONITORING WELL SC-3R

ID	ELEV 1929-FT	**NAVD88 FT.
MW (SC-3RA)	97.58'	100.43'
MW (SC-3RB)	97.69'	100.44'
MW (SC-3RC)	97.80'	100.55'

ELEVATIONS WERE TAKEN ON THE NORTH RIMS, AND MARKS WERE PLACED AT THAT LOCATION IN BLACK MARKER.

## STATE PLANE COORDINATES, NAD 83(CORS 96)

0403-CALIF. ZONE 3, U.S. FEET

ID	NORTHING	EASTING
MW (SC-3RA)	1817052.3	6139570.4
MW (SC-3RB)	1817050.3	6139563.5
MW (SC-3RC)	1817048.3	6139557.3

## BASIS OF ELEVATIONS

THE ELEVATION WAS DETERMINED FROM A NATIONAL GEODETIC SURVEY (NGS) BENCHMARK AND IS DESCRIBED AS FOLLOWS:

DESIGNATION-Z 212  
PID-GU2287  
STATE/COUNTY-CA/SANTA CRUZ  
USGS SOQUEL (1994)

VERT ORDER - FIRST CLASS I  
ELEV=63.95' (NGVD29)  
ELEV=66.70' (NAVD88)

DESCRIBED BY NATIONAL GEODETIC SURVEY 1972



4.4 MILES EAST ALONG THE SOUTHERN PACIFIC COMPANY RAILROAD FROM THE WEST CLIFF DRIVE OVERPASS AT SANTA CRUZ, AT CAPITOLA, AT THE CROSSING OF MONTEREY AVENUE, 25.0 FEET SOUTH OF THE SOUTH RAIL, 35 FEET WEST OF THE CENTER LINE OF THE AVENUE, 4 FEET SOUTHEAST OF TELEPHONE POLE 13, 10 FEET NORTHWEST OF POWER POLE 3522 WITH A TRANSFORMER AND STREET LIGHT, 16.0 FEET NORTH OF THE NORTHWEST CORNER OF THE NORTH END OF THE WEST CONCRETE SIDEWALK OF THE AVENUE, 1.0 FOOT NORTH OF A WITNESS POST, ABOUT LEVEL WITH THE TRACK, AND SET IN THE TOP OF A CONCRETE POST PROJECTING 0.6 FOOT ABOVE THE GROUND.

NAVD88 ELEVATIONS WERE CALCULATED USING THE U.S. ARMY CORPS OF ENGINEERS CORPSON 6.0.1 PROGRAM. THE CALCULATED ELEVATION DIFFERENCE FROM THE NGVD29 DATUM TO THE NAVD88 DATUM IS +2.75' FT

## BOWMAN & WILLIAMS

CONSULTING CIVIL ENGINEERS

1011 CEDAR STREET SANTA CRUZ CA 426-3560

SCALE	1" = 60'
DATE	APRIL 23, 2013
DRAWN	DLN

JOB NO.	25057-002
DWG NAME	25057_SC-3R
FILE NO.	25057

## MONITORING WELL

SC-3R

SOQUEL CREEK WATER DISTRICT  
5180 SOQUEL DRIVE, SOQUEL, CA 95073