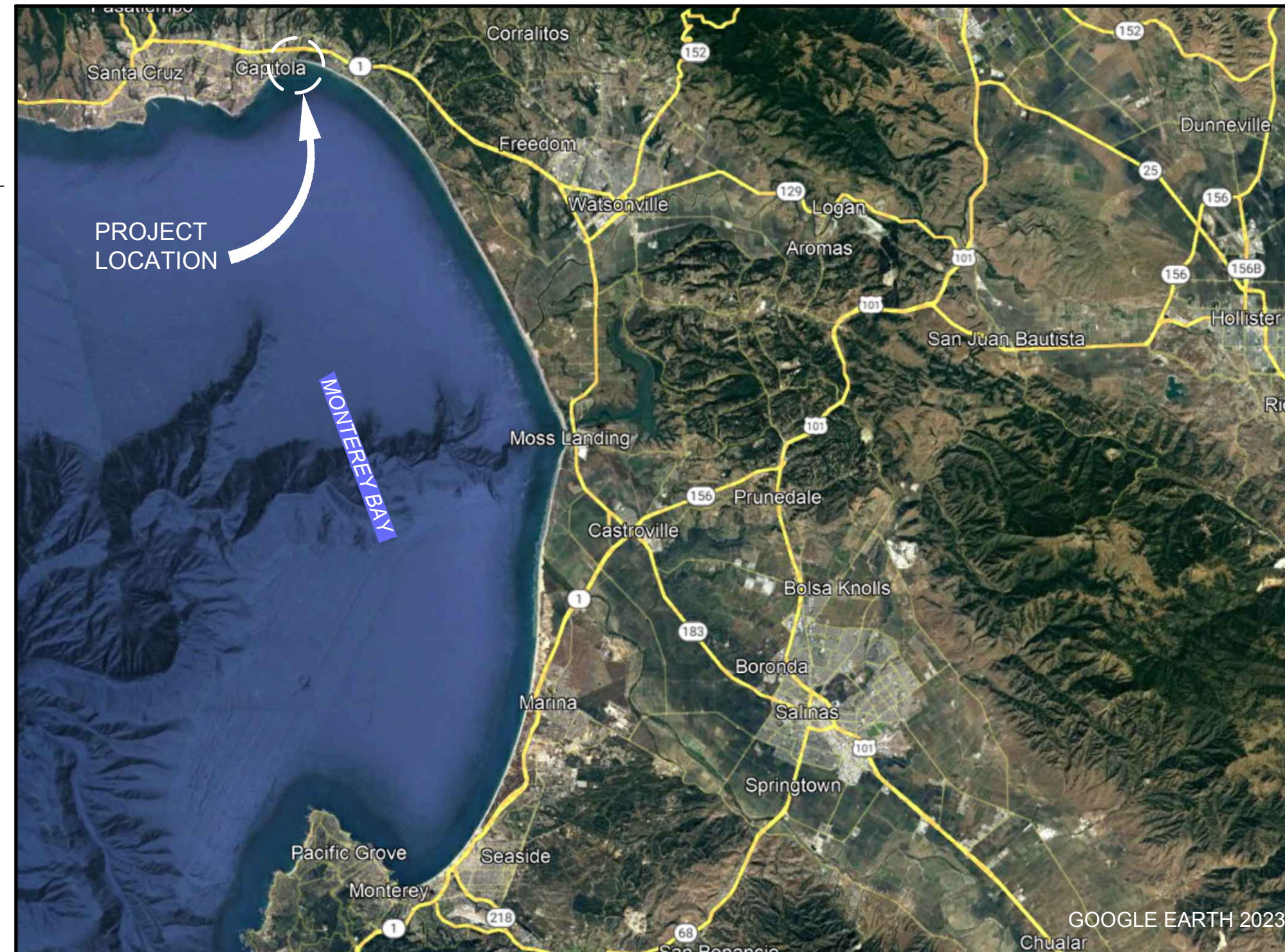
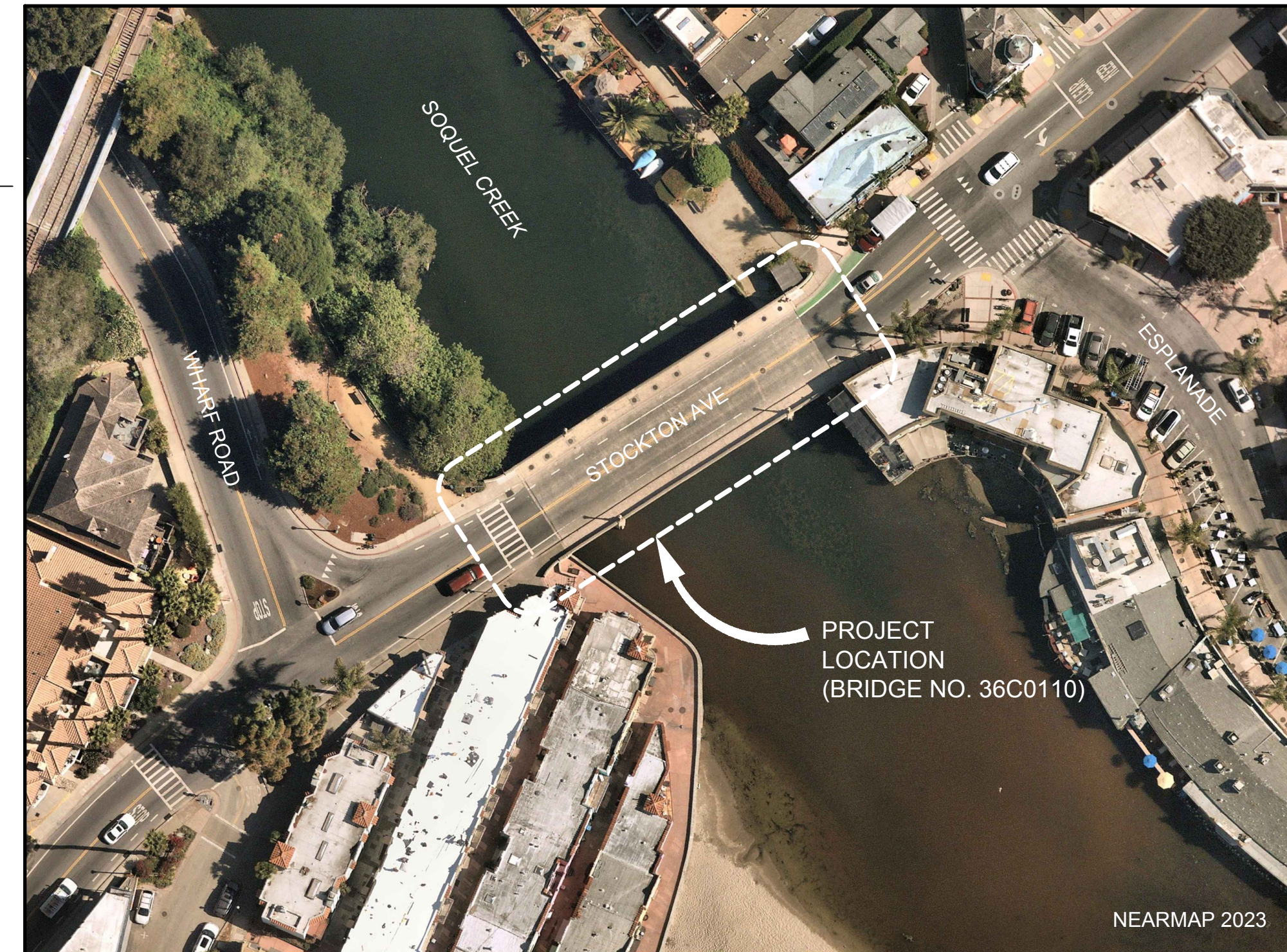


CAPITOLA BRIDGE OVER SOQUEL CREEK EMERGENCY BRIDGE REPAIRS

CAPITOLA, CALIFORNIA



VICINITY MAP
SCALE: NTS



LOCATION MAP
SCALE: NTS

SHEET INDEX		
SHEET SEQ. NO.	SHEET REF. NO.	SHEET TITLE
1	G-001	TITLE SHEET
2	G-002	GENERAL NOTES, LEGEND, SYMBOLS AND ABBREVIATIONS
3	S-001	BRIDGE REPAIR DETAILS SHEET 1 OF 2
4	S-002	BRIDGE REPAIR DETAILS SHEET 2 OF 2

Mark	Description	Date	Appr.

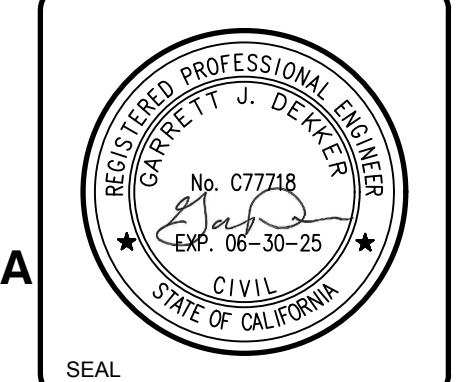
CAPITOLA BRIDGE OVER SOQUEL CREEK
EMERGENCY BRIDGE REPAIRS

TITLE SHEET

Designed by:	KA	Date:	11-09-23	Rev:	0
Drawn by:	EP	MAN Project No.:	230131		
Checked by:	GD	Drawing code:			
Submitted by:	GD	Submitted by:	MOFFATT & NICHOL	Drawing Scale:	1" = (0 SHEET)

2185 N. CALIFORNIA BLVD.,
SUITE 500
WALNUT CREEK, CA 94596
PHONE: (925) 944-5411

moffatt & nichol



Sheet Reference No.
G-001
INDEX: 1 OF 4

File: Q:\MC\230131 Stockton Ave\20 CADD\ Active\ SheetSet\230131TG-001 ; Plotted: 11/9/2023 3:28 PM by PLESCHCHUK, ELENA ; Saved: 11/9/2023 3:25 PM by PLESCHCHUK

GENERAL NOTES

- PREPARE AND COORDINATE SCHEDULE OF OPERATIONS WITH THE CITY OF CAPITOLA.
- VERIFY LOCATIONS OF EXISTING UTILITIES BEFORE BEGINNING ANY CONSTRUCTION OPERATIONS.
- PROTECT UTILITY VAULT BEHIND THE RETAINING WALL AND OTHER EXISTING UTILITY LINES.
- DEMOLITION OF EXISTING FEATURES SHALL BE LIMITED TO THE MEMBERS SHOWN ON THE PLANS. THE CONTRACTOR MUST REPAIR AND/OR REPLACE EXISTING FEATURES TO REMAIN THAT ARE DAMAGED BY THE CONTRACTOR.
- ALL CONSTRUCTION AND REMOVAL MUST CONFORM TO THE CALIFORNIA STANDARD SPECIFICATIONS, DATED 2023.
- ALL CONTROLLING FIELD DIMENSIONS MUST BE FIELD VERIFIED PRIOR TO ORDERING OR FABRICATING ANY MATERIAL. NOTIFY THE ENGINEER IMMEDIATELY UPON FINDING ANY FIELD CONDITIONS THAT CONFLICT WITH THE INFORMATION ON THESE DRAWINGS. ALL FIELD ADJUSTMENTS MUST BE APPROVED BY THE ENGINEER BEFORE CONSTRUCTION. FAILURE TO DO SO WILL RESULT IN THE CONTRACTOR ASSUMING FULL RESPONSIBILITY FOR ANY REQUIRED REVISIONS OR FIELD MODIFICATIONS AT NO ADDITIONAL COST.
- IN NO CASE SHALL WORKING DIMENSIONS BE SCALED FROM PLANS, SECTIONS OR DETAILS ON THE DRAWINGS.
- FURNISH, INSTALL, AND MAINTAIN ALL WARNING SIGNS AND DEVICES NECESSARY TO SAFEGUARD THE GENERAL PUBLIC AND THE WORK, AND PROVIDE PROPER AND SAFE ROUTING OF VEHICULAR AND PEDESTRIAN TRAFFIC DURING THE PERFORMANCE OF THE WORK. THIS REQUIREMENT SHALL APPLY CONTINUOUSLY AND SHALL NOT BE LIMITED TO WORKING HOURS.
- THE CONTRACTOR IS RESPONSIBLE FOR TEMPORARY SHORING AND STRUCTURAL STABILITY DURING ALL PHASES OF CONSTRUCTION.
- KEEP THE PROJECT SITE IN A NEAT AND ORDERLY CONDITION, FREE OF RUBBISH AND DEBRIS, AT ALL TIMES. THE SITE SHALL BE CLEANED OF DEBRIS AT THE END OF EACH DAY AND AT THE CONCLUSION OF REMOVAL WORK.
- ALL WORK SHOWN SHALL BE NEW UNLESS OTHERWISE NOTED.
- DURING CONSTRUCTION, THE CONTRACTOR IS RESPONSIBLE FOR JOBSITE SAFETY
- CONSTRUCT BRIDGE REPAIRS DURING LOW TIDE OR WHEN FLOWS IN SOQUEL CREEK ARE RESTRICTED TO THE MAIN SPAN OF THE BRIDGE. PLACE PROTECTIVE MATS IN THE CHANNEL BOTTOM TO CATCH AND COLLECT DEBRIS DURING WORK ACTIVITIES. REMOVE MATS AT THE END OF EACH WORK SHIFT OR DURING HIGH FLOW EVENTS TO AVOID CONTACT WITH WATER.

CODES AND STANDARDS

- CALIFORNIA STANDARD SPECIFICATIONS, DATED 2023.
- CALIFORNIA STANDARD PLANS, DATED 2023.

CONSTRUCTION BEST MANAGEMENT PRACTICES

- ALL WORK MUST TAKE PLACE DURING DAYLIGHT HOURS (i.e., FROM ONE HOUR BEFORE SUNRISE TO ONE HOUR AFTER SUNSET) AND SUBJECT TO ALL APPROPRIATE MITIGATION MEASURES TO MINIMIZE LIGHTING OF WETLANDS, AND TO AVOID RESOURCE IMPACTS, AS MUCH AS POSSIBLE.
- ALL CONSTRUCTION AND/OR STAGING AREAS MUST BE DESIGNED TO MINIMIZE IMPACTS TO PUBLIC ACCESS.
- ALL CONSTRUCTION MATERIALS MUST BE PROPERLY STORED AND CONTAINED SO THAT THESE PRODUCTS WILL NOT SPILL OR OTHERWISE ENTER THE CREEK OR THE CREEK BED.
- ALL EROSION CONTROL/WATER QUALITY BEST MANAGEMENT PRACTICES TO BE IMPLEMENTED DURING CONSTRUCTION WILL BE IN PLACE PRIOR TO THE START OF CONSTRUCTION AND THEIR LOCATIONS MUST BE NOTED.
- APPROPRIATE CONTAINMENT METHODS MUST BE USED TO CAPTURE CONSTRUCTION DEBRIS, PARTICULATES, OIL, GREASE, RUST, PAINT, DIRT, AND SPILLS TO PROTECT WATER QUALITY. CONTAINMENT MUST BE IN PLACE PRIOR TO COMMENCEMENT OF CONSTRUCTION AND AT THE END OF THE WORKDAY AS APPROPRIATE.
- APPROPRIATE DISPOSAL METHODS MUST BE USED.

- ALL PUBLIC ACCESS MUST BE RESTORED TO PRECONSTRUCTION CONDITION OR BETTER WITHIN THREE DAYS OF COMPLETION OF CONSTRUCTION.

STRUCTURAL NOTES

- MINIMUM CONCRETE COVER OVER REINFORCING BARS SHALL BE 3", UON.
- REINFORCEMENT HOOKS AND BENDS SHALL BE STANDARD HOOKS CONFORMING TO THE PROVISIONS OF THE AMERICAN CONCRETE INSTITUTE (ACI) 318-19.
- REINFORCED CONCRETE: $f_c = 3,600$ psi
 $f_y = 60,000$ psi
- SOIL BACKFILL: $\phi = 34^\circ$
 $y = 120$ pcf
- MATERIAL FOR SPALL REPAIRS TO COMPLY WITH CALTRANS STANDARD SPECIFICATIONS 60-3.05B(2).

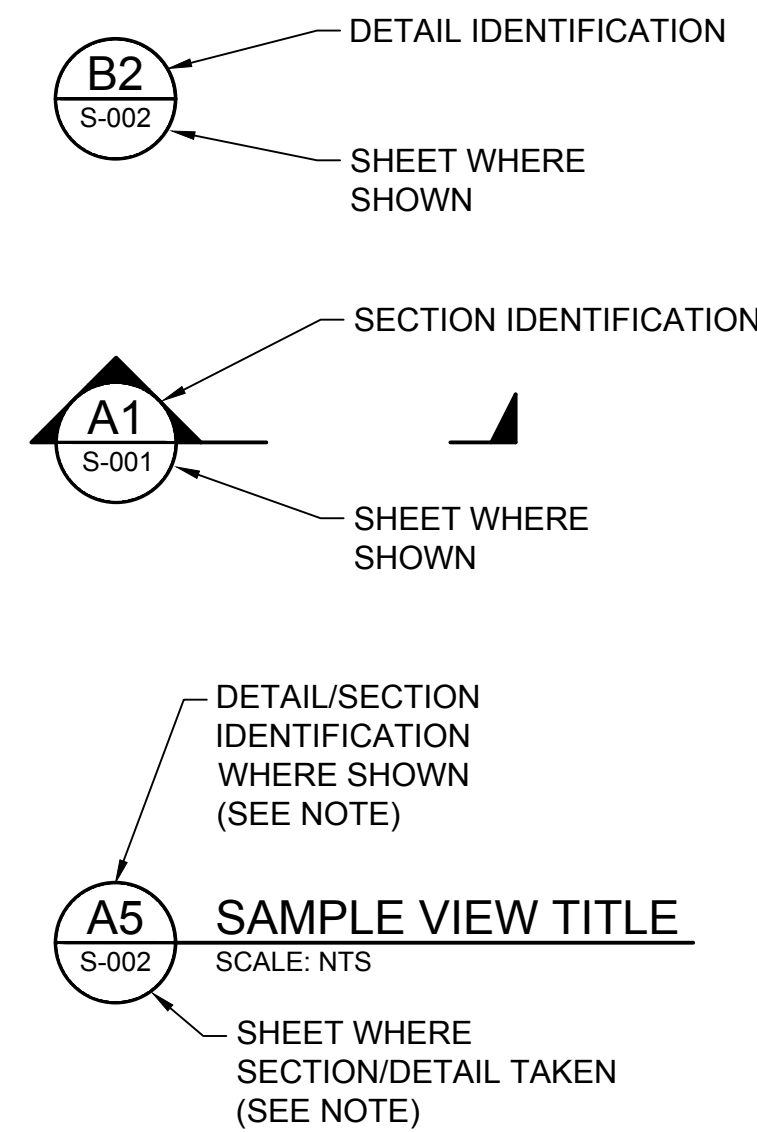
CONSTRUCTION SEQUENCE FOR WALKWAY REPAIR

- CLEAR WALKWAY AND RETAINING WALL OF ANY DEBRIS.
- CORE THROUGH EXISTING WALKWAY SLAB EVERY 4 FEET ALONG THE LENGTH AND NOTE THE GROUND ELEVATION UNDER THE WALKWAY.
- PROVIDE GROUND ELEVATIONS TO ENGINEER.
- ENGINEER TO DETERMINE LIMITS OF REMOVE AND REPLACE WALKWAY SLAB.
- EXCAVATE MATERIAL NORTH OF RETAINING WALL. PROTECT-IN-PLACE UTILITY VAULT AND ALL UTILITY LINES.
- REMOVE RETAINING WALL, SAWCUT AND REMOVE PORTION OF WALKWAY SLAB PER ENGINEER'S DIRECTION.
- BLAST CLEAN AND PAINT EXPOSED STEEL SOLDIER PILE WALL SECTIONS. IF SECTION LOSS IS FOUND UPON BLAST CLEANING, CONTRACTOR TO NOTIFY ENGINEER FOR REPAIR OR REPLACEMENT.
- NOTIFY ENGINEER OF THE CONDITION OF TIMBER LAGGING. REMOVE AND REPLACE TIMBER LAGGING PER ENGINEER'S DIRECTION.
- REMOVE LOOSE BACKFILL MATERIAL, PLACE AND COMPACT STRUCTURE BACKFILL TO BOTTOM OF WALKWAY SLAB.
- CONSTRUCT NEW WALKWAY SLAB AND RETAINING WALL .
- PLACE BACKFILL NORTH OF THE RETAINING WALL TO RESTORE ORIGINAL GRADE.

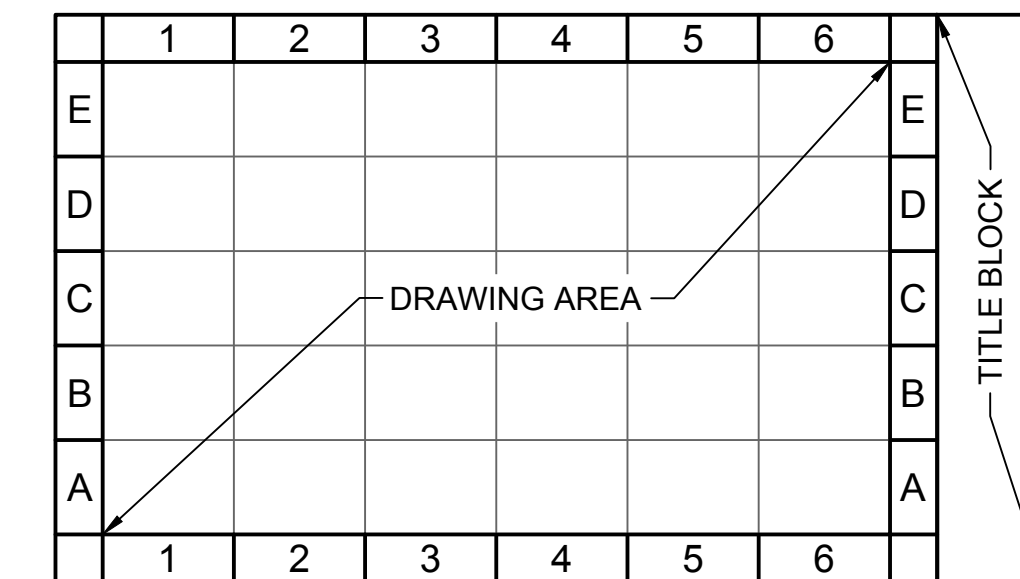
PERMITS

- ALL WORK MUST BE PERFORMED IN COMPLIANCE WITH THE FOLLOWING PERMITS:
 - EMERGENCY COASTAL DEVELOPMENT PERMIT (ECDP) G-3-23-0065
 - WATER QUALITY ORDER NO. 2023-0058-DWQ

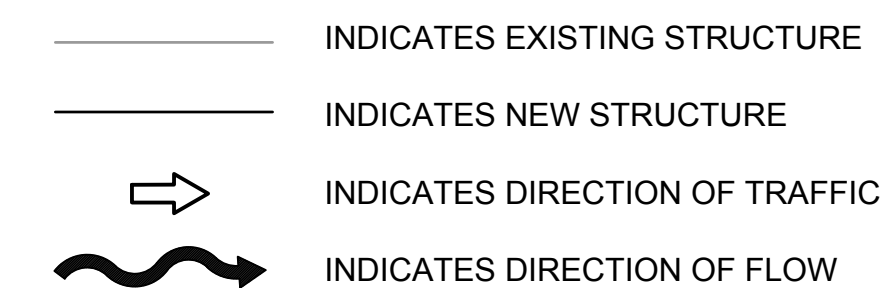
CROSS-REFERENCE LEGEND



NOTE:
LETTER AND NUMBER COMBINATION INDICATE IDENTIFICATION OF SECTION, DETAIL OR VIEW. IDENTIFICATION IS BASED ON THE LOCATION ON THE SHEET WHERE SHOWN. WHEN REFERENCING DRAWING INFORMATION BETWEEN SHEETS BOTH THE IDENTIFICATION AND THE SHEET ARE QUOTED TOGETHER - EITHER IN CALLOUT FORMAT AS SHOWN ABOVE OR IN THE FORM "VIEW NO./SHEET NO." (A1/S-001).



LEGEND AND SYMBOLS



ABBREVIATIONS

APPROX	APPROXIMATE
CL	CENTERLINE
CLR	CLEAR
CONC	CONCRETE
(E)	EXISTING
ELEV	ELEVATION
MAX	MAXIMUM
SPECS	SPECIFICATIONS
STD	STANDARD
TYP	TYPICAL
UON	UNLESS OTHERWISE NOTED

Rev.	Date	Description	Mark

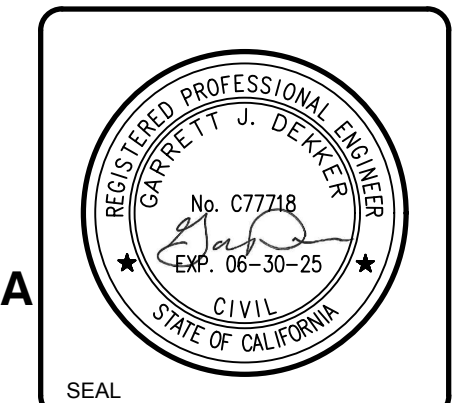
**CAPITOLA BRIDGE OVER SOQUEL CREEK
EMERGENCY BRIDGE REPAIRS**

**GENERAL NOTES, LEGEND,
SYMBOLS AND ABBREVIATIONS**

Designed by: KA	Date: 11-09-23	Rev: 0
Drawn by: EP	MAN Project No: 230131	
Checked by: GD	Drawing code:	
Reviewed by: GD	Drawing Scale:	
Submitted by: MOFFATT & NICHOL	Per Scale: 1" = 10' (0 SHEET)	

2185 N. CALIFORNIA BLVD.
SUITE 500
WALNUT CREEK, CA 94596
PHONE: (925) 944-5411

moffatt & nichol



Sheet Reference No.
G-002
INDEX: 2 OF 4

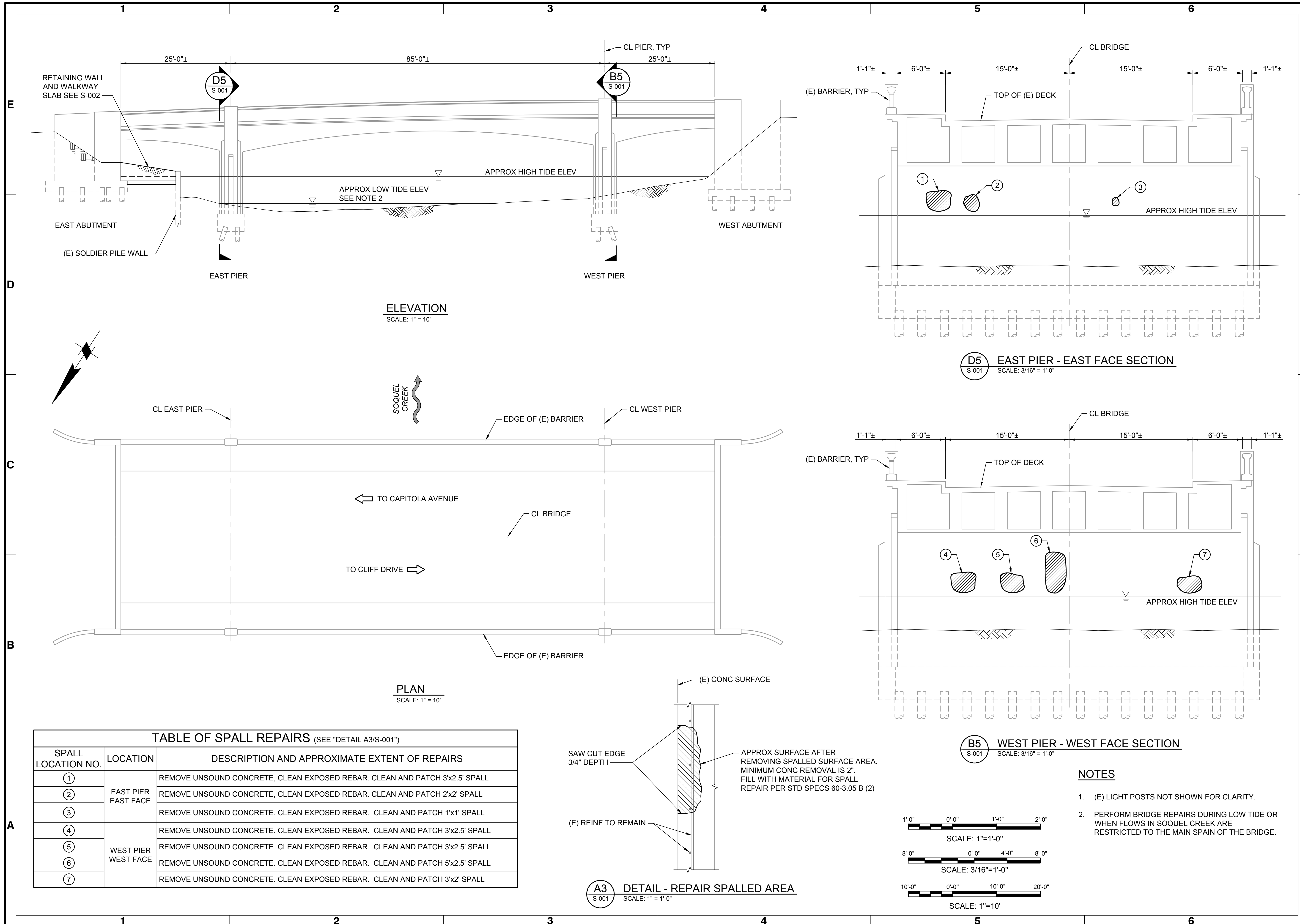
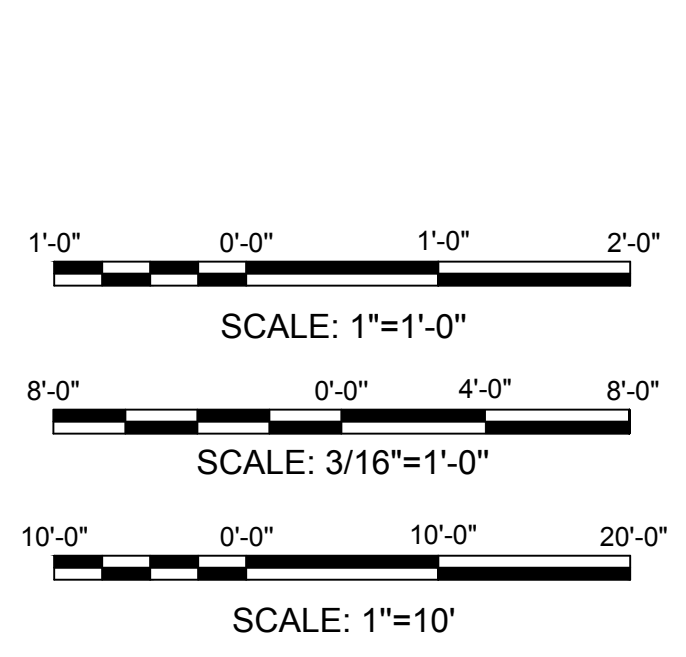
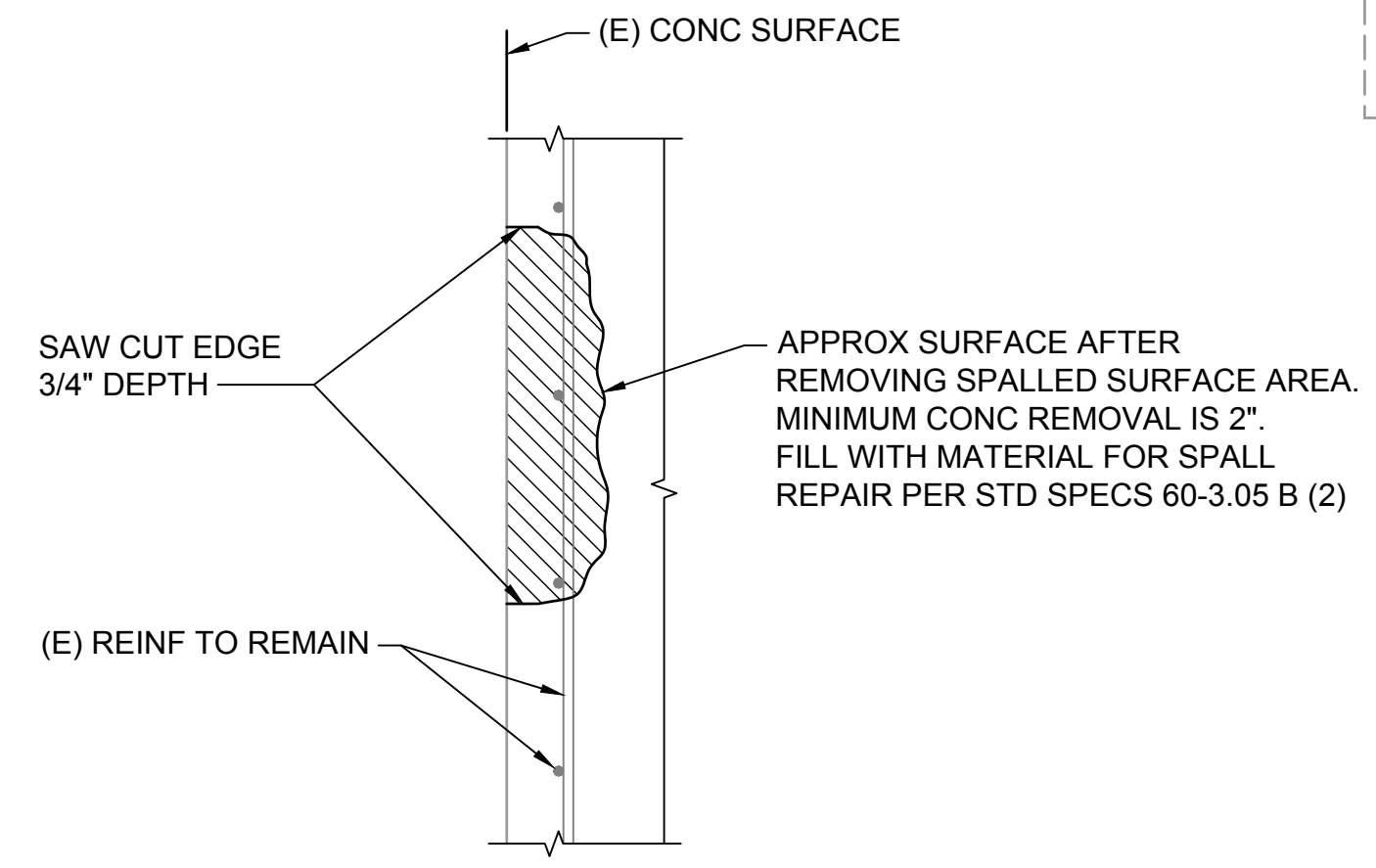


TABLE OF SPALL REPAIRS (SEE "DETAIL A3/S-001")		
SPALL LOCATION NO.	LOCATION	DESCRIPTION AND APPROXIMATE EXTENT OF REPAIRS
1	EAST PIER EAST FACE	REMOVE UNSOUND CONCRETE, CLEAN EXPOSED REBAR. CLEAN AND PATCH 3'x2.5' SPALL
2		REMOVE UNSOUND CONCRETE, CLEAN EXPOSED REBAR. CLEAN AND PATCH 2'x2' SPALL
3		REMOVE UNSOUND CONCRETE, CLEAN EXPOSED REBAR. CLEAN AND PATCH 1'x1' SPALL
4	WEST PIER WEST FACE	REMOVE UNSOUND CONCRETE, CLEAN EXPOSED REBAR. CLEAN AND PATCH 3'x2.5' SPALL
5		REMOVE UNSOUND CONCRETE, CLEAN EXPOSED REBAR. CLEAN AND PATCH 3'x2.5' SPALL
6		REMOVE UNSOUND CONCRETE, CLEAN EXPOSED REBAR. CLEAN AND PATCH 5'x2.5' SPALL
7		REMOVE UNSOUND CONCRETE, CLEAN EXPOSED REBAR. CLEAN AND PATCH 3'x2' SPALL



- NOTES**
- (E) LIGHT POSTS NOT SHOWN FOR CLARITY.
 - PERFORM BRIDGE REPAIRS DURING LOW TIDE OR WHEN FLOWS IN SOQUEL CREEK ARE RESTRICTED TO THE MAIN SPAN OF THE BRIDGE.

**CAPITOLA BRIDGE OVER SOQUEL CREEK
EMERGENCY BRIDGE REPAIRS**

**BRIDGE REPAIR DETAILS
SHEET 1 OF 2**

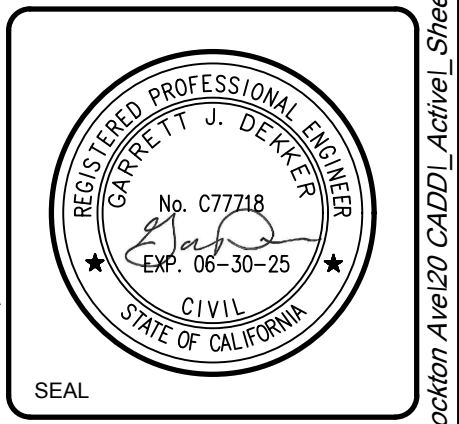
2185 N. CALIFORNIA BLVD.
SUITE 500
WALNUT CREEK, CA 94596
PHONE: (925) 944-5411

moffatt & nichol

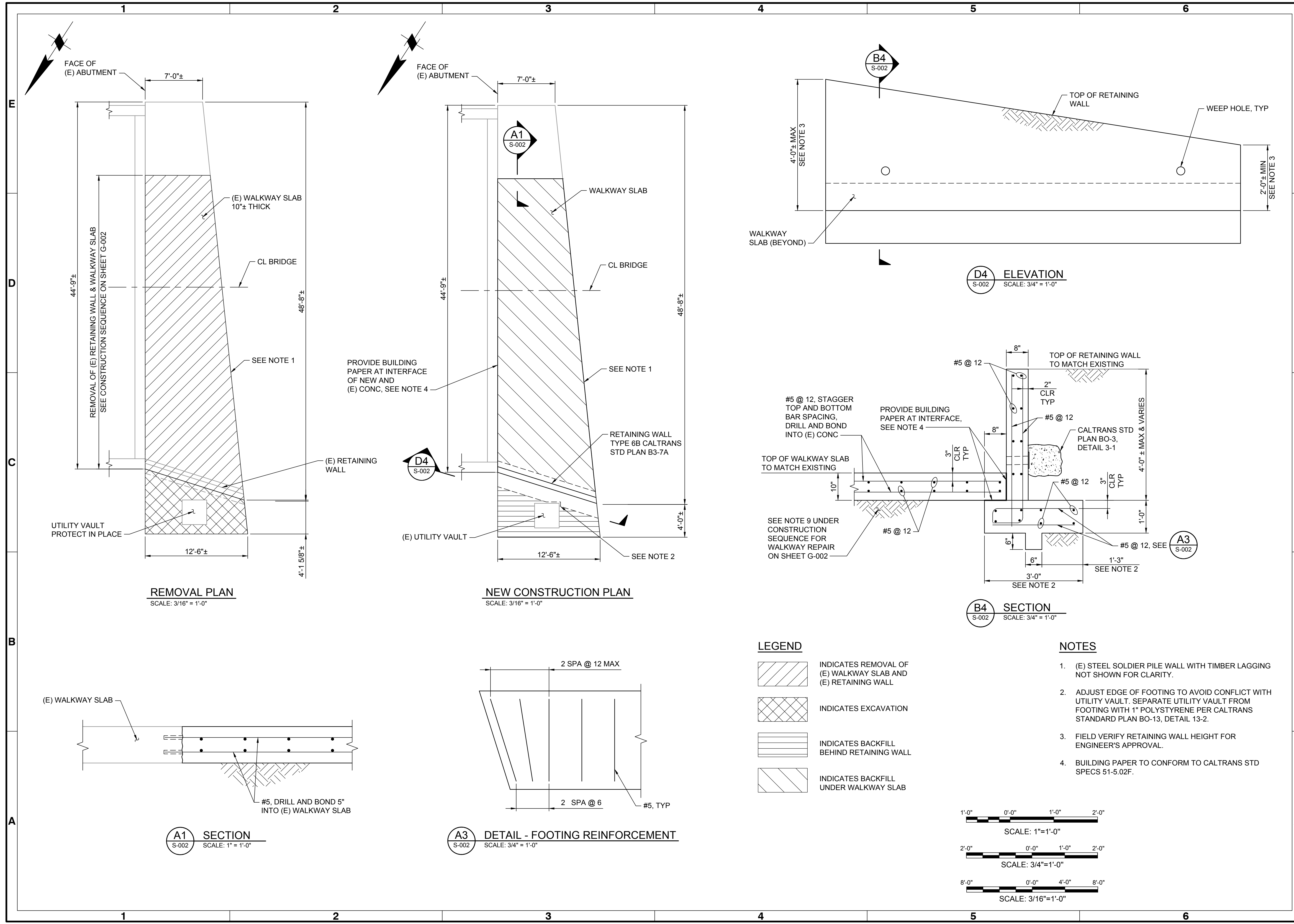
Designed by: KA
Drawn by: EP
Checked by: GD
Reviewed by: GD

Date: 11-09-23
MAN Project No: 230131
Drawing code:

Submitted by: MOFFATT & NICHOL
Per Scale: 1" = 10' (0 SHEET)



Sheet Reference No.
S-001
INDEX: 3 OF 4



REMOVAL PLAN
SCALE: 3/16" = 1'-0"

NEW CONSTRUCTION PLAN
SCALE: 3/16" = 1'-0"

A1 SECTION
SCALE: 1" = 1'-0"

A3 DETAIL - FOOTING REINFORCEMENT
SCALE: 3/4" = 1'-0"

D4 ELEVATION
SCALE: 3/4" = 1'-0"

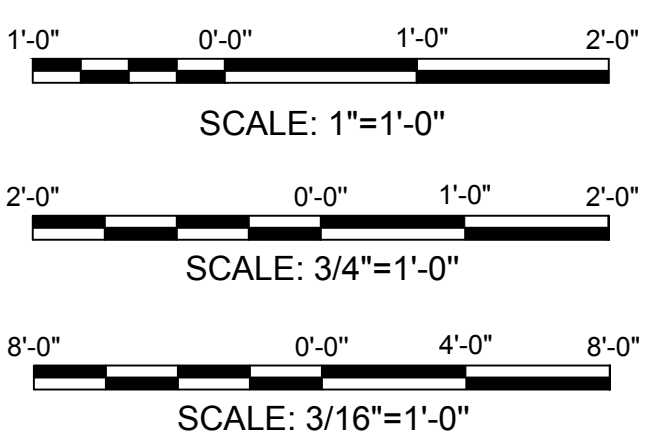
B4 SECTION
SCALE: 3/4" = 1'-0"

LEGEND

- INDICATES REMOVAL OF (E) WALKWAY SLAB AND (E) RETAINING WALL
- INDICATES EXCAVATION
- INDICATES BACKFILL BEHIND RETAINING WALL
- INDICATES BACKFILL UNDER WALKWAY SLAB

NOTES

1. (E) STEEL SOLDIER PILE WALL WITH TIMBER LAGGING NOT SHOWN FOR CLARITY.
2. ADJUST EDGE OF FOOTING TO AVOID CONFLICT WITH UTILITY VAULT. SEPARATE UTILITY VAULT FROM FOOTING WITH 1" POLYSTYRENE PER CALTRANS STANDARD PLAN BO-13, DETAIL 13-2.
3. FIELD VERIFY RETAINING WALL HEIGHT FOR ENGINEER'S APPROVAL.
4. BUILDING PAPER TO CONFORM TO CALTRANS STD SPECS 51-5.02F.



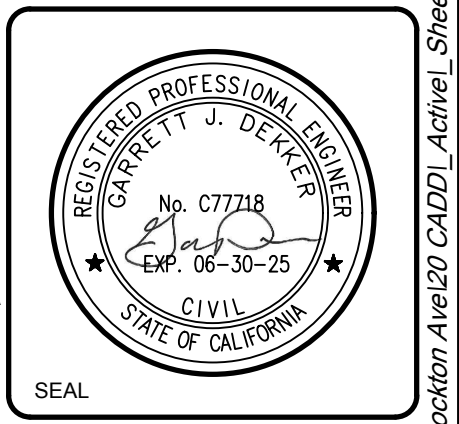
**CAPITOLA BRIDGE OVER SOQUEL CREEK
EMERGENCY BRIDGE REPAIRS**

**BRIDGE REPAIR DETAILS
SHEET 2 OF 2**

Designed by:	KA	Date:	11-09-23
Drawn by:	EP	MAN Project No.:	230131
Reviewed by:	GD	Drawing code:	
Submitted by:	MOFFATT & NICHOL	Drawing Scale:	1" = 1' (0 SHEET)

2185 N. CALIFORNIA BLVD.,
SUITE 500
WALNUT CREEK, CA 94596
PHONE: (925) 944-5411

moffatt & nichol



Sheet Reference No.
S-002
INDEX: 4 OF 4