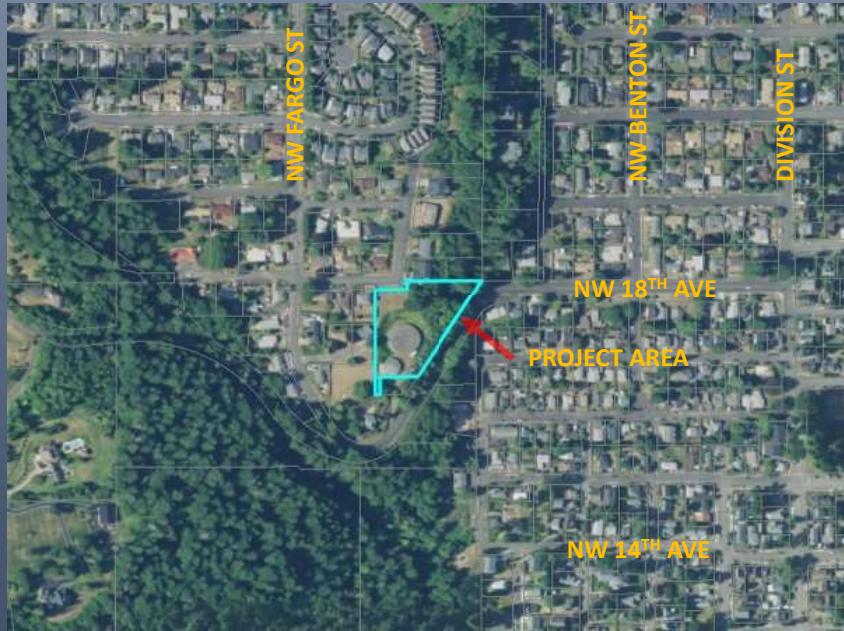


LOWER PRUNE HILL BOOSTER PUMP STATION RECONSTRUCTION CITY COUNCIL WORKSHOP MAY 3, 2021



PROJECT SUMMARY



VICINITY MAP



SITE MAP

1. Lower Prune Hill Booster Pump Station (BPS) requires replacement per the Water System Plan
2. The current project budget of \$2.32M will need to be supplemented to pay for a new BPS
3. Space limitations and steep terrain limit possible locations for a new BPS
4. 0.5 MG reservoir is also in poor condition and is scheduled to be replaced soon
5. There are benefits in reconstructing the 0.5 MG reservoir concurrently with the BPS

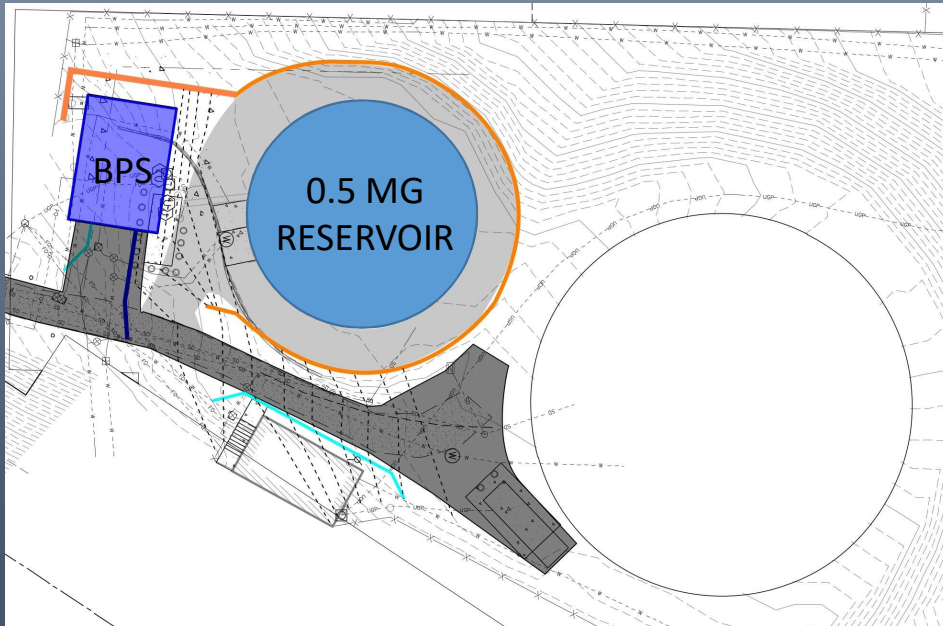


0.5 MG RESERVOIR



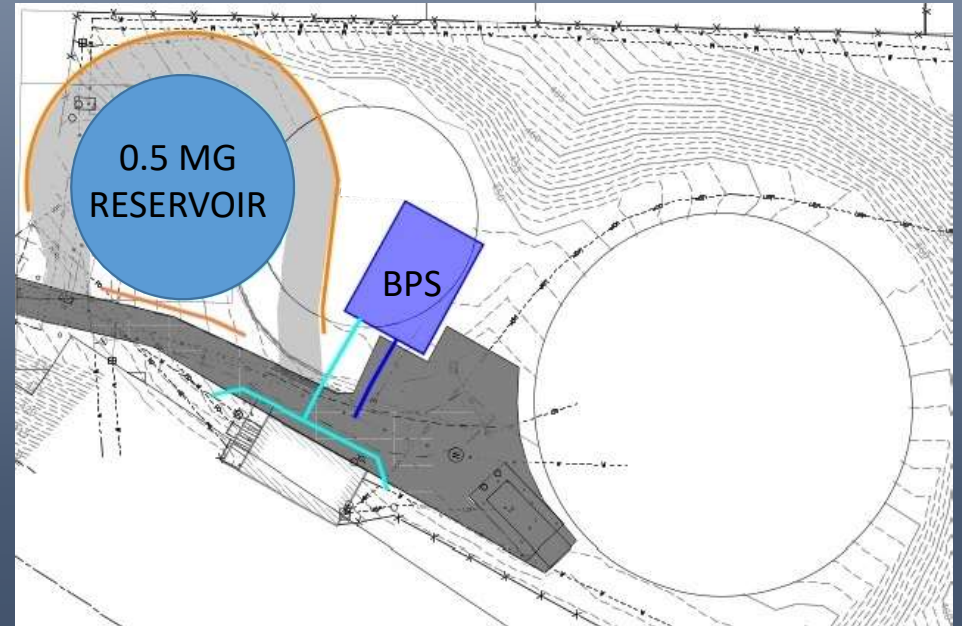
BOOSTER PUMP STATION

SITE LAYOUT OPTIONS



LAYOUT 1

MAINTAIN EXISTING LOCATION OF 0.5 MG RESERVOIR



LAYOUT 2

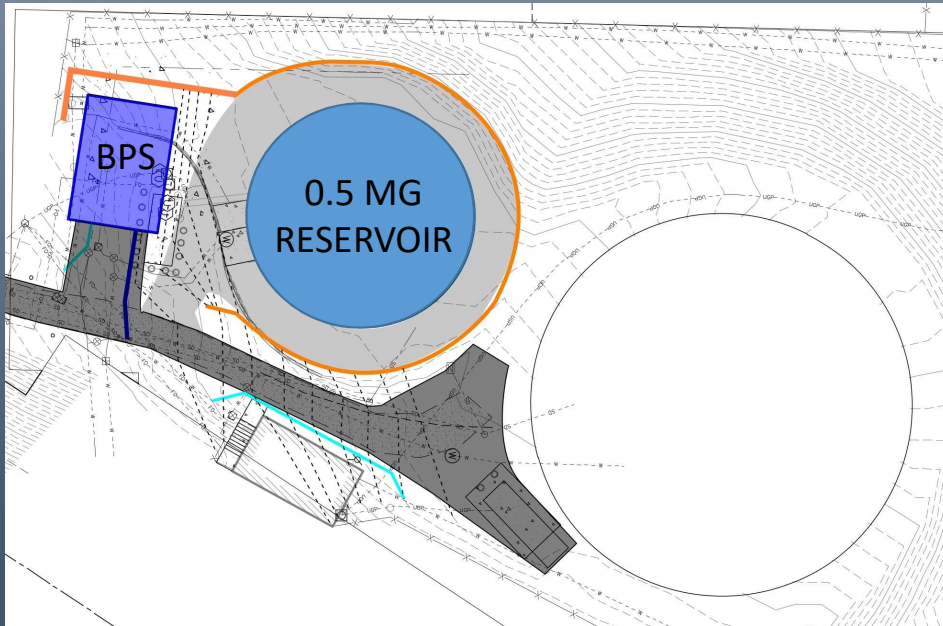
RELOCATE EXISTING 0.5 MG RESERVOIR

CONSIDERATIONS:

1. Layout 2 provides easier vehicular access to the BPS
2. Layout 2 allows more flexibility in building size and configuration
3. Total cost of Layout 2 is significantly less than Layout 1

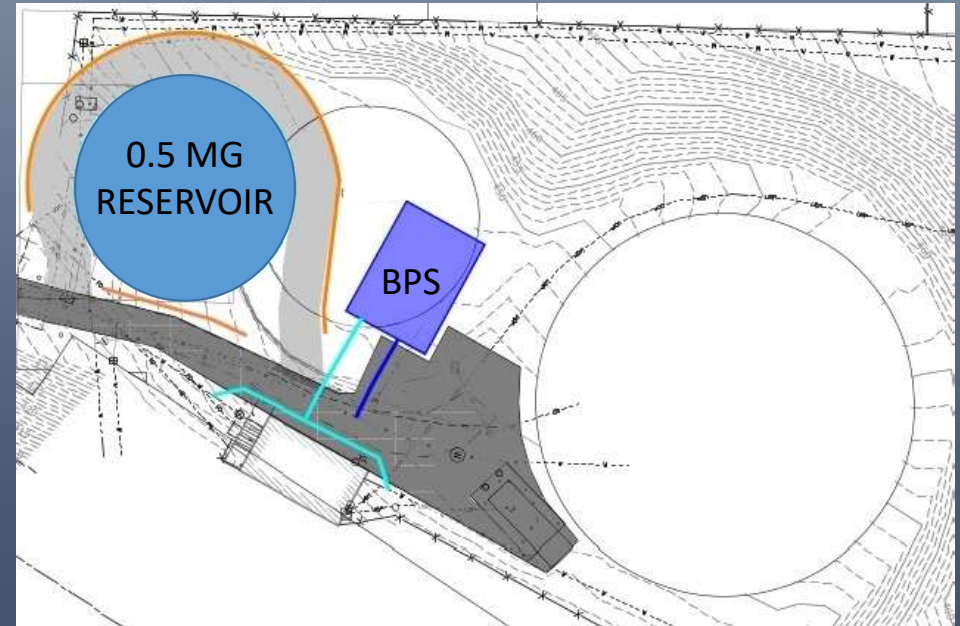
LAYOUT 2 IS THE PREFERRED OPTION

PHASING OPTIONS / COST SUMMARY



LAYOUT 1

MAINTAIN EXISTING LOCATION OF 0.5 MG RESERVOIR



LAYOUT 2

RELOCATE EXISTING 0.5 MG RESERVOIR

LAYOUT	SCOPE NOW	FUTURE SCOPE	COST NOW	FUTURE COSTS	TOTAL COST	NOTES
1A	Reconstruct BPS and Reservoir	None	\$8,043,000	\$0	\$8,043,000	
1B	Reconstruct BPS	Reconstruct Reservoir	\$4,012,000	\$4,736,000	\$8,748,000	
2A	Reconstruct BPS and Reservoir	None	\$7,831,000	\$0	\$7,831,000	PREFERRED OPTION
2B	Reconstruct BPS	Reconstruct Reservoir	\$4,012,000	\$4,352,000	\$8,364,000	

PREFERRED OPTION

OPTION 2A: RELOCATE AND RECONSTRUCT EXISTING 0.5 MG RESERVOIR
CONCURRENTLY WITH BPS RECONSTRUCTION

FUNDING ANALYSIS

BUDGETED FUNDING: \$2.32M

SOURCE: WATER FUND

TOTAL FUNDING NEEDED: \$7.83M

TOTAL FUNDING INCREASE: \$5.51M

SOURCE: WATER FUND

