

General Sewer Plan Update

Presentation to City Council



Agenda

- Elements addressed in General Sewer Plan(GSP).
- Projected collection system flows.
- City's existing wastewater system.
- Inflow and infiltration.
- System analysis and recommended projects.
- Capital Improvement Plan.
- Financial analysis.

Elements addressed in General Sewer Plan

The GSP provides a 20 year plan for the city to install or replace infrastructure to meet growth and repair and replacement needs of the city and is fiscally responsible. The plan is approved by Department of Ecology and the City of Camas.

- The evaluation of system capacity to address both existing deficiencies and potential development.
- Implementation of recommended system improvements by priority and funding which maintains affordable rates for the system users.

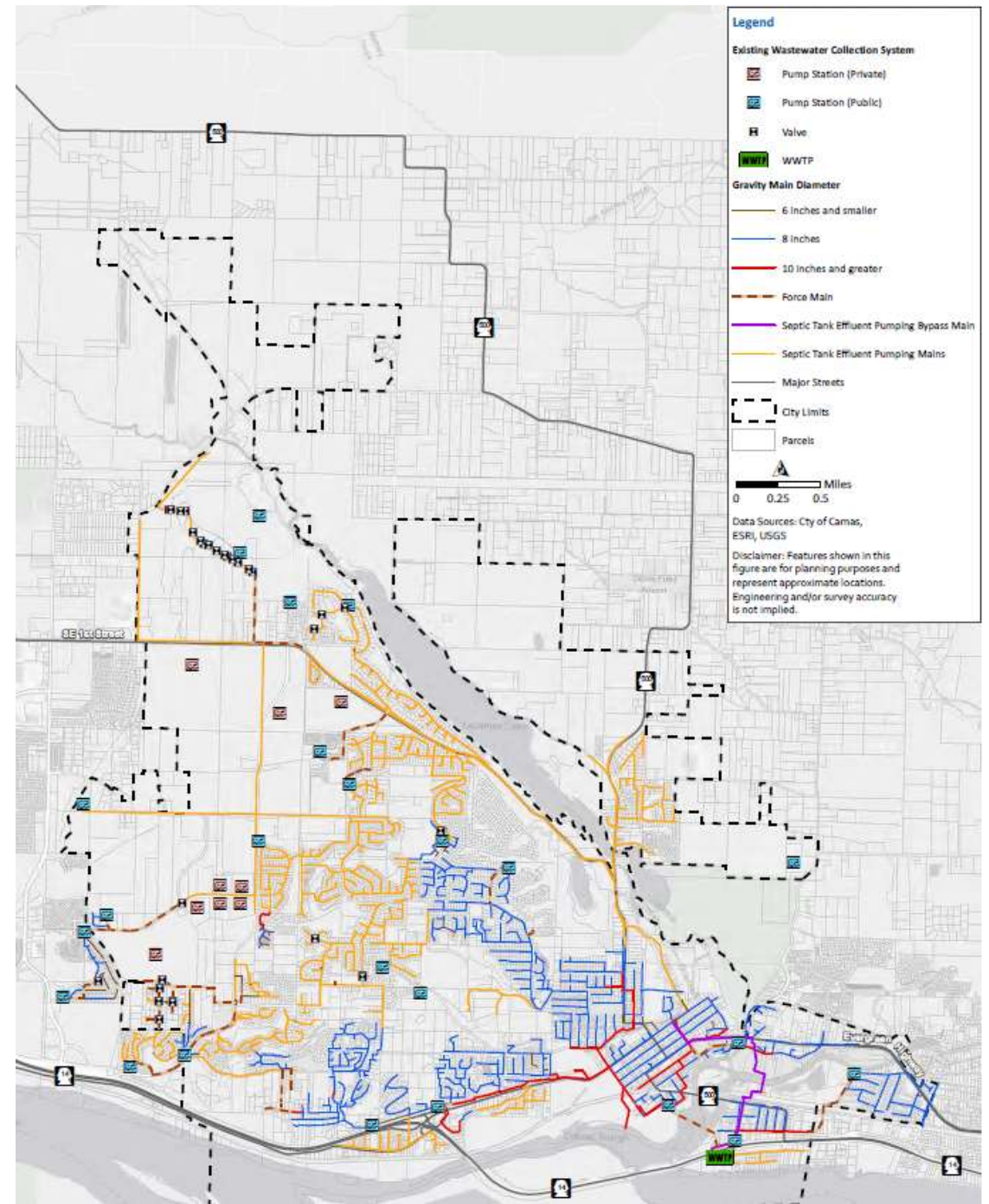
Projected collection system flows

- Based on City's 2035 Comprehensive Plan. Wet weather flows are high in the city due to the influence of groundwater which enters sewer lines underground or stormwater which can enter through non-permitted connections to sewer lines.

Planning Horizon	Average Dry Weather Flow (mgd)	Peak Wet Weather Flow (mgd)
2018	0.80	5.45
2035	1.63	13.33
Buildout	2.63	14.86

// City's existing sewer system

- Conventional system
 - 44.7 miles of gravity main
 - 29 lift stations
 - 7.2 miles of force main
- Septic tank effluent system
 - 49.8 miles of sewer main
 - 5000+ STEP Tanks maintained by the city



City's Wastewater Treatment Facility (WWTF)



The city has greatly reduced infiltration and inflow!

Parameter	EPA Criteria for Excessive I/I (gpcd)	I/I Value for Camas in 2014 (gpcd)	Current I/I Value for Camas (gpcd)
EPA Excessive Infiltration Criteria	120	80	46
EPA Excessive Inflow Criteria	275	348	176

gpcd - gallons per capita per day.

Recommended Project Improvements Short term (2022-2031) and Long Term (2032-2041)

Pipelines

Short Term - \$5.517M

Long Term - \$568k

Pump Stations (PS)

Short Term - \$3.787M

Long Term - \$12.813M

Gravity and STEP System

Short Term - \$821k

Long Term - \$816k

Repair and Replacement (Waste Water Treatment Plant (WWTP), PS, Sewer mains, STEP Tanks)

Short Term - \$14.595M

Long Term - \$7.5M

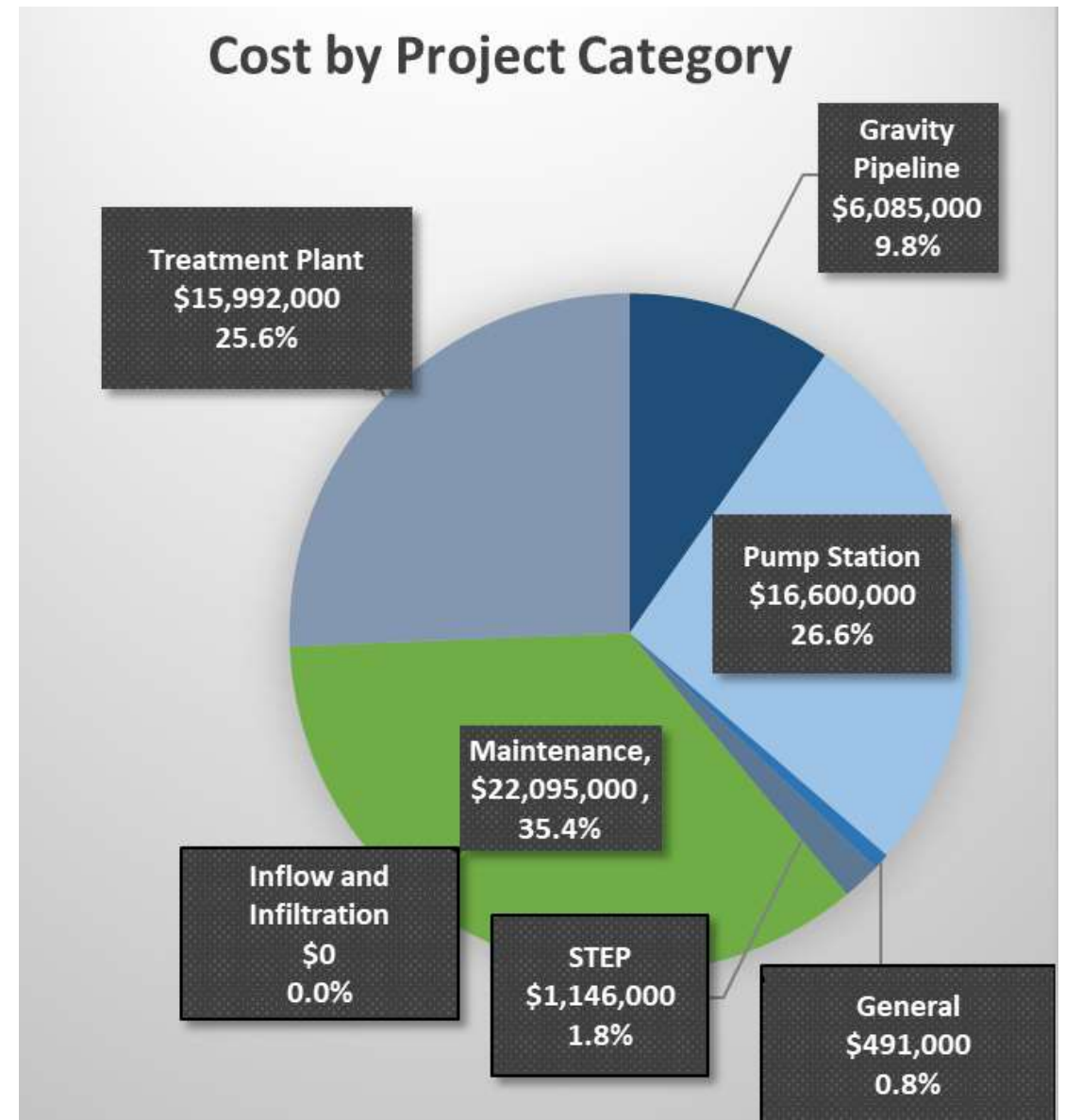
WWTP

Short Term - \$15.254M

Long Term - \$738K

Capital Improvement Plan

Planning Period	Total Cost	Annual Cost
Short-term (2022-2031)	\$40.0 M	\$4.0 M
Long-term (2032-2041)	\$22.4 M	\$2.2 M



Financial analysis

- Rates increases needed to provide sufficient revenue:
 - *Recommended rate increase:
 - 3.3% annual increase in 2022 and 2023.
 - 1.75% annual increase in 2024 through 2026.
 - State affordability index defined as 2% of median household income or more.
 - Rates projected to be 0.53 – 0.59% of median household income.
- *Rates are currently being reviewed by FCS Group and will be presented to council at a later date.

- Adoption of the GSP will be at the Nov. 21st Council meeting as part of the Capital Facilities Plan element of the Comprehensive Plan.

Questions?