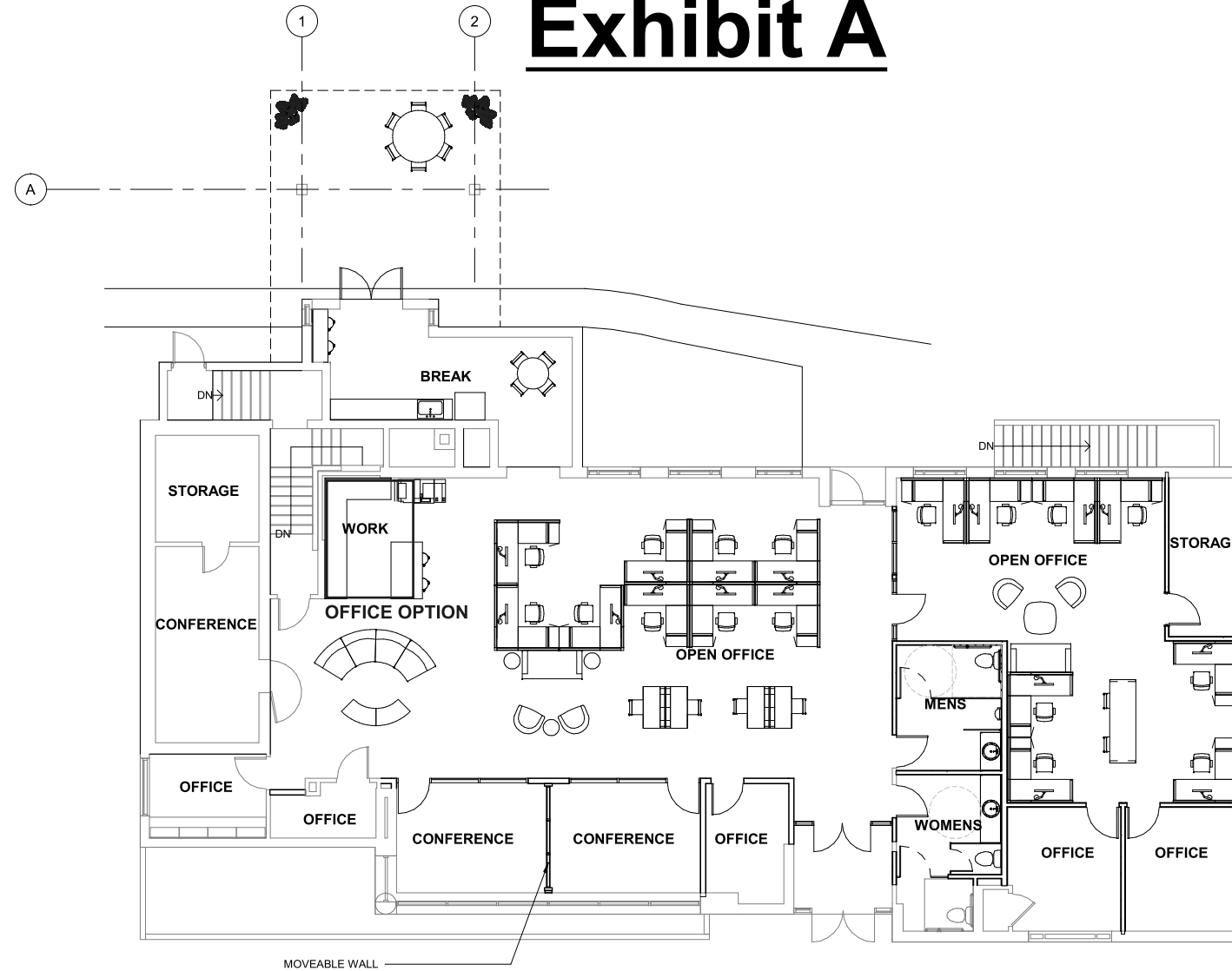


Exhibit A



1 PRELIMINARY FLOOR PLAN

1/8" = 1'-0"

- GENERAL TENANT IMPROVEMENT REMODEL SCOPE:**
1. DEMOLITION OF INTERIOR PARTITIONS WITHIN OPEN OFFICE AREAS.
 2. REMOVAL OF EXISTING APPLIED CEILING PANELS (ABATEMENT BY OTHERS) TO BE REPLACED WITH NEW SUSPENDED ACOUSTIC CEILING TILE/ GRID SYSTEM.
 3. DEMOLITION OF ALL EXISTING ITEMS THAT ARE UNUSED IN THE REMODEL.
 4. NEW WALL AND FLOOR FINISHES.
 5. NEW INTERIOR PARTITIONS FOR NEW ROOM CONSTRUCTION.
 6. NEW & REMODELED RESTROOMS.
 7. INTERIOR DOOR & HARDWARE REPLACEMENT.
 8. ALL EXTERIOR DOORS, WINDOWS & STOREFRONT TO BE REPLACED.
 9. HVAC MODIFICATIONS TO EXISTING SYSTEMS TO ACCOMMODATE NEW SPACES.
 10. NEW LIGHTING THROUGHOUT.
 11. NEW ELECTRICAL POWER LAYOUT THROUGHOUT REMODELED SPACES INCLUDING FLOOR BOX POWER DISTRIBUTION TO ACCOMMODATE NEW SYSTEMS FURNITURE.
 12. DATA/ TECHNOLOGY UPGRADES.
 13. NEW ROOFING AND DRAINAGE SYSTEMS.
 14. NEW ROOF FLASHINGS AS NECESSARY.
 15. MINIMAL PATCH & REPAIR OF EXISTING DAMAGED BRICK.
 16. MINIMAL EXTERIOR SEALING AT FAILING LOCATIONS.
 17. FRONT ENTRY WALKWAY REWORK FOR NEW STORM DRAINAGE SYSTEM.
 18. SITE DOMESTIC WATER AND SANITARY SEWER PIPING REPLACEMENT

NOT FOR CONSTRUCTION

CAMAS CITY HALL
ANNEX
CAMAS, WA

PRELIMINARY
FLOOR PLAN

PROJECT # 22006
DATE 08/10/2022

REV #	DATE	DESCRIPTION

A201
DRAWING SET