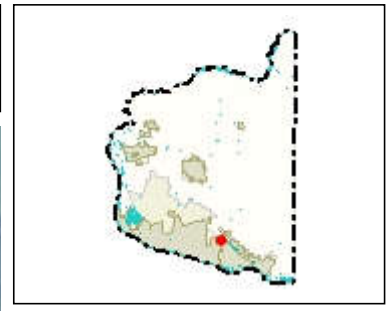
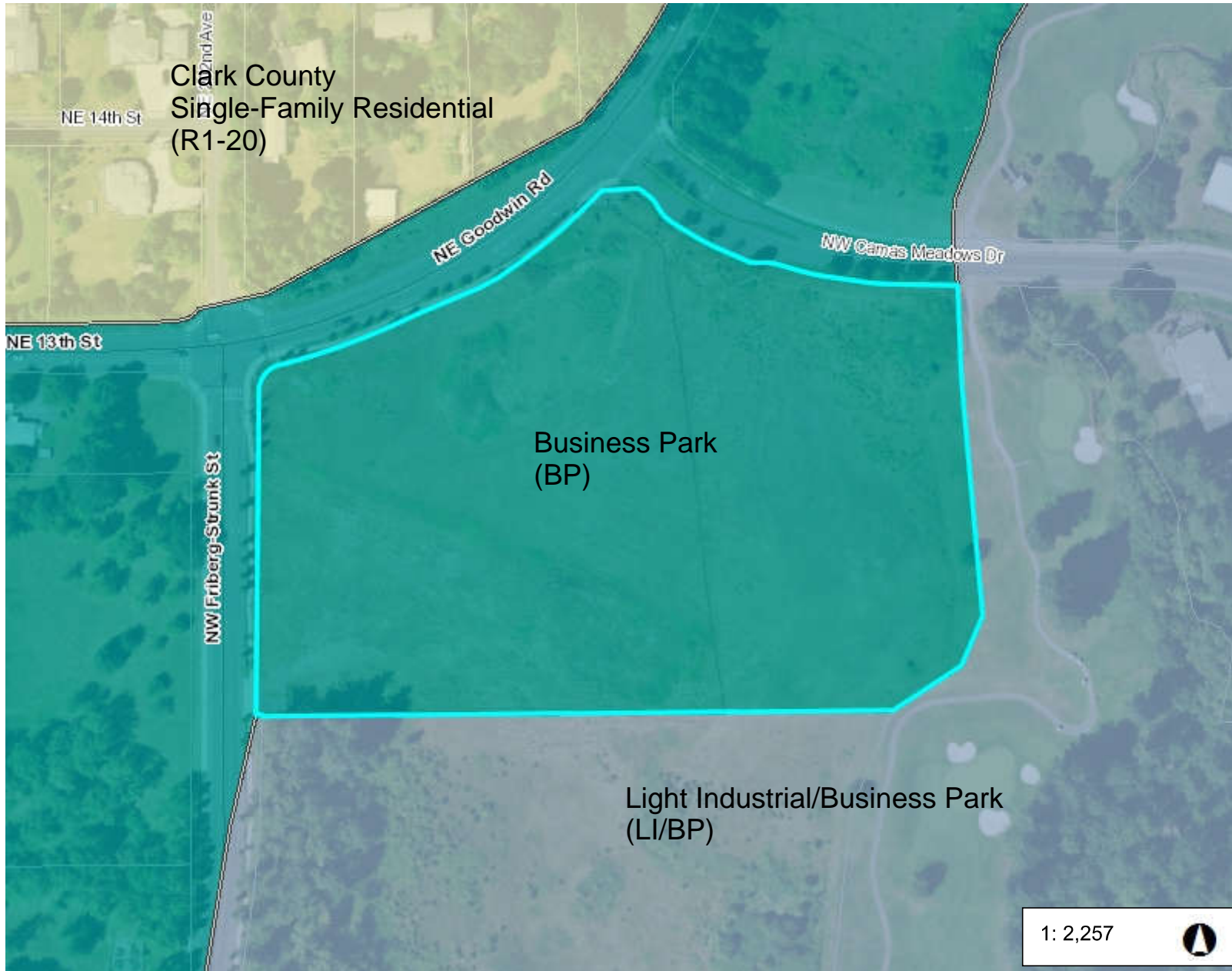




# Zoning Map



## Legend

- Zoning Overlay**
- Urban Reserve - 10 (UR-10)
  - Urban Reserve - 20 (UR-20)
  - Urban Holding - 10 (UH-10)
  - Urban Holding - 20 (UH-20)
  - Railroad Industrial Urban Reserve
  - Freight Rail Dependent Use
  - Railroad Industrial Overlay District
  - Airport Environs Overlay
  - Surface Mining Overlay District
  - Rural Center Mixed Use
  - Existing Historic Resort
  - Mill Creek Overlay District
  - Highway 99 Overlay District
  - Activity Center Overlay
  - Transitional Area Overlay
  - Single Family Residential Area Overlay
  - Mixed Residential Area Overlay
  - Multifamily Residential Area Overlay
  - 78th Street Property
  - Columbia River Gorge Scenic Area
  - Vancouver - Multiple Overlays
  - Sewer Capacity Overlay
  - Infill Residential Development Area

## Notes:

1: 2,257



376.2 0 188.08 376.2 Feet

WGS\_1984\_Web\_Mercator\_Auxiliary\_Sphere  
 Clark County, WA. GIS - <http://gis.clark.wa.gov>

This map was generated by Clark County's "MapsOnline" website. Clark County does not warrant the accuracy, reliability or timeliness of any information on this map, and shall not be held liable for losses caused by using this information.