



Financials Go-Live Presentation

Tyler Technologies ERP Project (PACE)



Agenda

ERP Project Recap

Financials Module

New Features

Questions

ERP Solution with Tyler Technologies

Solution = Camas PACE

Public Works

Accounting

Community Development

Employees



ERP Modules

Financials

Human
Resources
Management

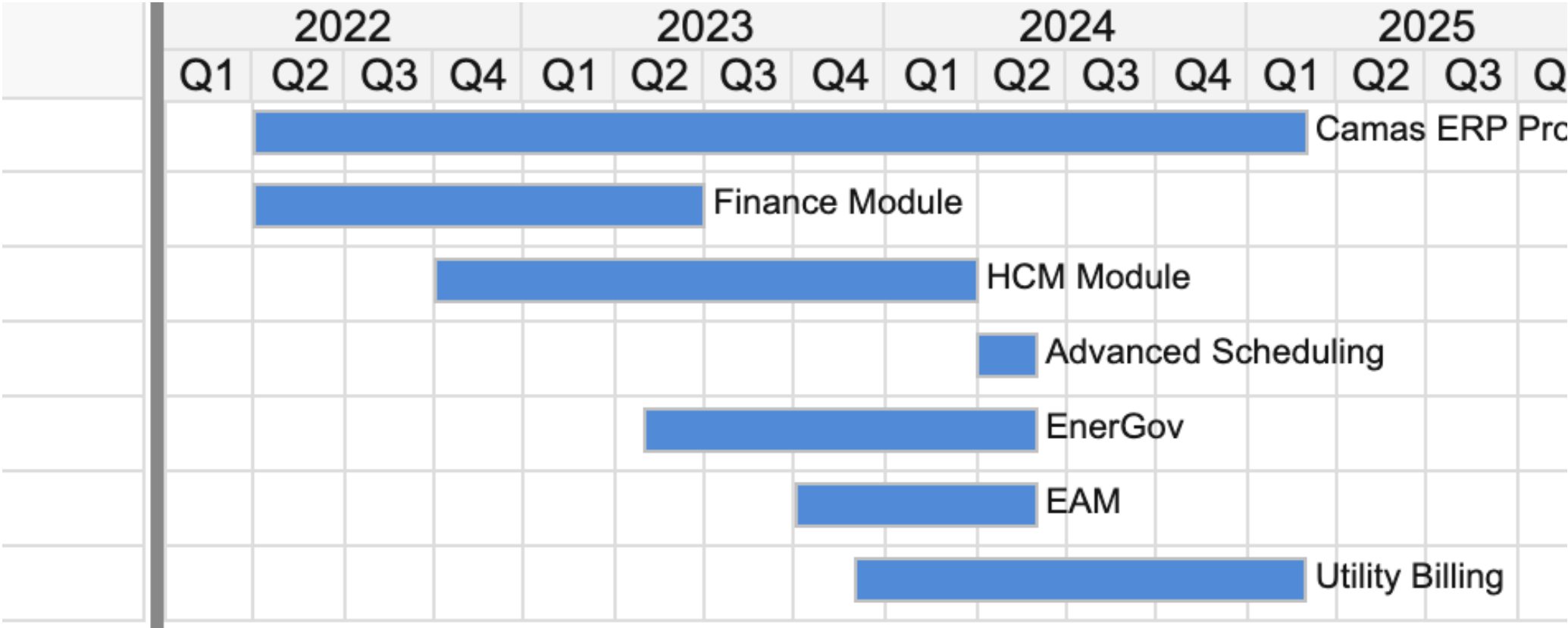
Enterprise
Permitting
and Licensing

Enterprise
Asset
Management

Utility Billing

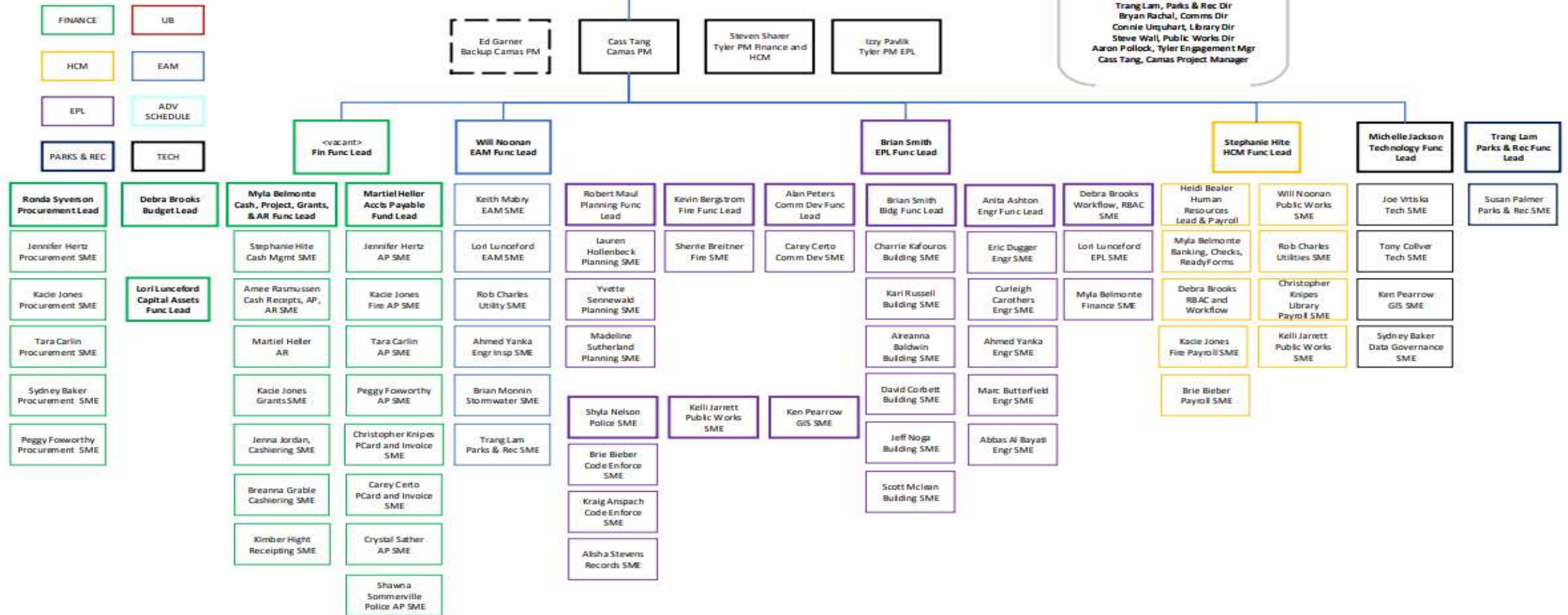
Modules Timeline

- Additional module considerations:
- Vendor Self-service (VSS) rebranded to Vendor Access (VA).
 - Employee Self-Service (ESS) rebranded to Employee Access (EA)
 - VA, EA, Civic Access, Resident Access updates and timing still to be determined by Tyler



Project Organization Structure

ERP Modernization Project Structure Chart (Escalation Chart) Updated July 31, 2023



Financials (Munis or Enterprise)

Accounting/GL	Accounts Payable	Bid Management	Budgeting
Capital Assets	Cash Management	Contract Management	Inventory
Accounts Receivable/General Billing	Tyler Cashiering	Project and Grant Management	Purchasing/Vendor Access

Productivity

Citizen Access/Resident Access

eProcurement

Munis Analytics and Reporting

Tyler Content Manager SE

Tyler Notify

Tyler 311/Incident Management

Socrata



New Features

Workflow

Document Retention

Single Entry

Mobile Access

HUB Access

Multiple Ways to Access and Use
Information

Integration

Self Service

Processes

Display

- Journal Entries
- GL Display

Budget Adjustments

Journal Entries

Maintenance

New Budget Info

Reporting Tools

Reports

Utilities

Managers' Reports

External Reports

Desktop

GL Display

Chart of Accounts Mai...

Chart of Accounts Maintenance

File Window Help

Save Refresh 0 Attachments Exit Help Undock from MDI

General Balance Budget History POs Graphs Visual Reporting Extended Budgeting Tag

Show:	Committed Only
Beginning Balance:	\$13,784,848.17
Activity:	\$887,297.47
Budget:	\$0.00
YTD:	\$14,672,145.64
Available:	\$0.00
Available:	0.00%

Invoices without PO's:

Pre-Encumbrance:

Uncommitted PO's:

Encumbered:

Total:

YTD with Encumbrance:

Available with Encumbrance:

Available with Encumbrance:

Period	Month	Debit	Credit	Balance	Budget	YTD Balance
1	January	\$2,526,829.38	\$2,913,332.11	(\$386,502.73)	\$0.00	\$13,398,345.44
2	February	\$4,148,504.28	\$3,899,796.59	\$248,707.69	\$0.00	\$13,647,053.13
3	March	\$5,375,741.84	\$3,450,539.85	\$1,925,201.99	\$0.00	\$15,572,255.12
4	April	\$7,394,586.59	\$4,751,569.23	\$2,643,017.36	\$0.00	\$18,215,272.48
5	May	\$1,490,612.30	\$4,838,576.12	(\$3,347,963....)	\$0.00	\$14,867,308.66
6	June	\$56,251.26	\$251,414.28	(\$195,163.02)	\$0.00	\$14,672,145.64
7	July	\$0.00	\$0.00	\$0.00	\$0.00	\$14,672,145.64
8	August	\$0.00	\$0.00	\$0.00	\$0.00	\$14,672,145.64
9	September	\$0.00	\$0.00	\$0.00	\$0.00	\$14,672,145.64
10	October	\$0.00	\$0.00	\$0.00	\$0.00	\$14,672,145.64
11	November	\$0.00	\$0.00	\$0.00	\$0.00	\$14,672,145.64
12	December	\$0.00	\$0.00	\$0.00	\$0.00	\$14,672,145.64
13	Audit Adj.	\$0.00	\$0.00	\$0.00	\$0.00	\$14,672,145.64
14	Audit Adj.	\$0.00	\$0.00	\$0.00	\$0.00	\$14,672,145.64

Springbrook

City of Camas - PACE

 1

Approvals

 0

Notifications

 0

Alerts

Camas Links

- [City of Camas Homepage](#)
- [Camas Financial Policies](#)
- [PACE Learning Center](#)
- [Submit PACE Issues to IT/Finance](#)
- [Socrata Budget Explorer](#)

Tyler Menu

Search

- Enterprise ERP
 - Financials
 - Human Capital Management
 - General Revenues
 - Property Revenues
 - Asset Maintenance
 - Other Applications
 - Departmental Functions
 - System Administration
 - Help

Budget Monitoring

Long Description	Over Budget	Account ↑	Account Balances By Year
Planning Travel		0001.58.0000.150.5586000.542...	
Planning Insurance	!	0001.58.0000.150.5586000.546...	
	Revised	Encumbrance	Actual
	\$13,950.00	\$0.00	\$16,950.33

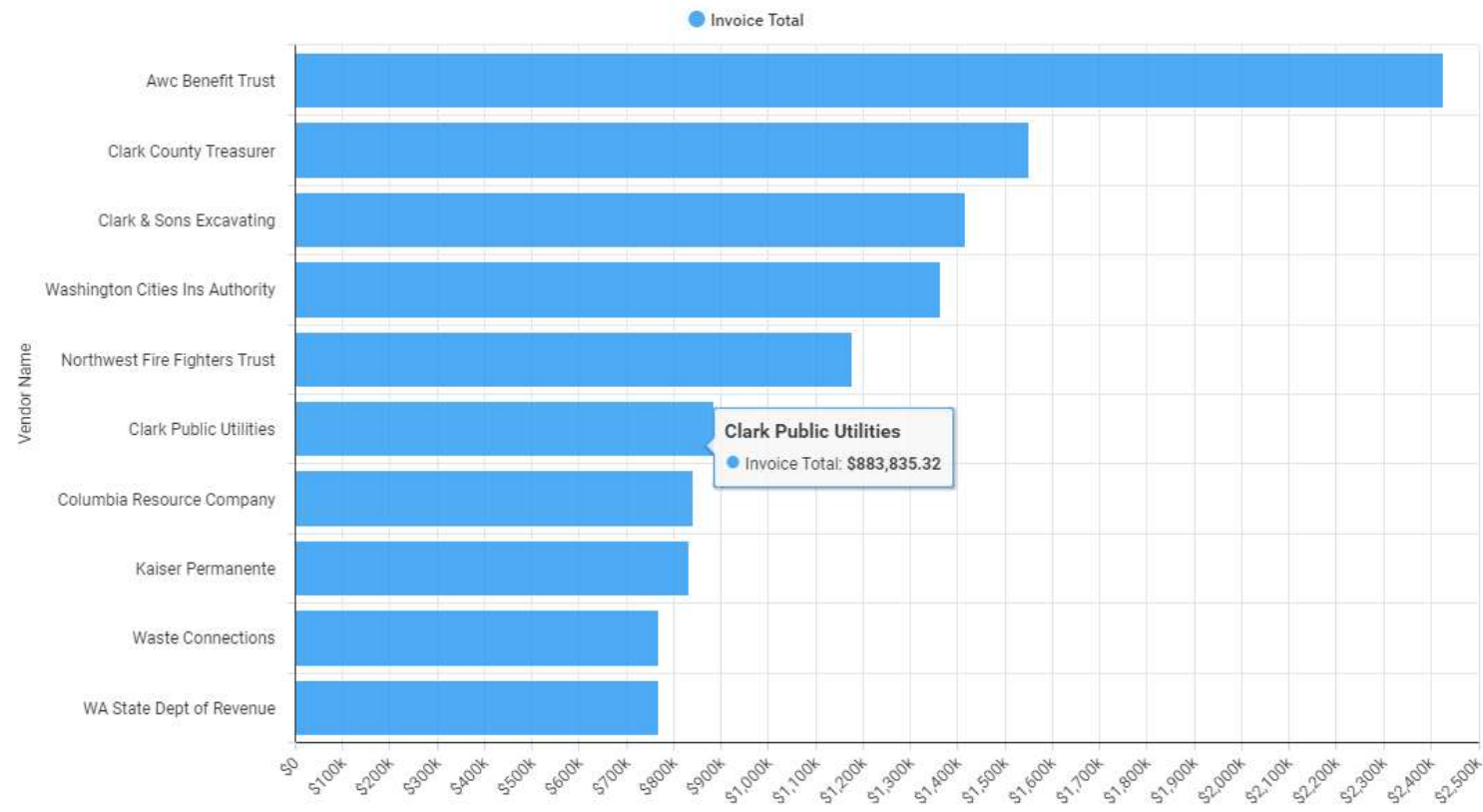
Rows per page: 5 1-1 of 1

Planning Ads/Printing/Forms	0001.58.0000.150.5586000.549...
Planning Miscellaneous	0001.58.0000.150.5586000.549...
Building Salaries	0001.58.0000.160.5585000.511...
Building Overtime	0001.58.0000.160.5585000.512...
Building Benefits	0001.58.0000.160.5585000.521...
Building Supplies	0001.58.0000.160.5585000.531...
Building Fuel Consumed	0001.58.0000.160.5585000.532...
Building Tools & Equipment	0001.58.0000.160.5585000.535...
Building Professional Svcs	0001.58.0000.160.5585000.540...

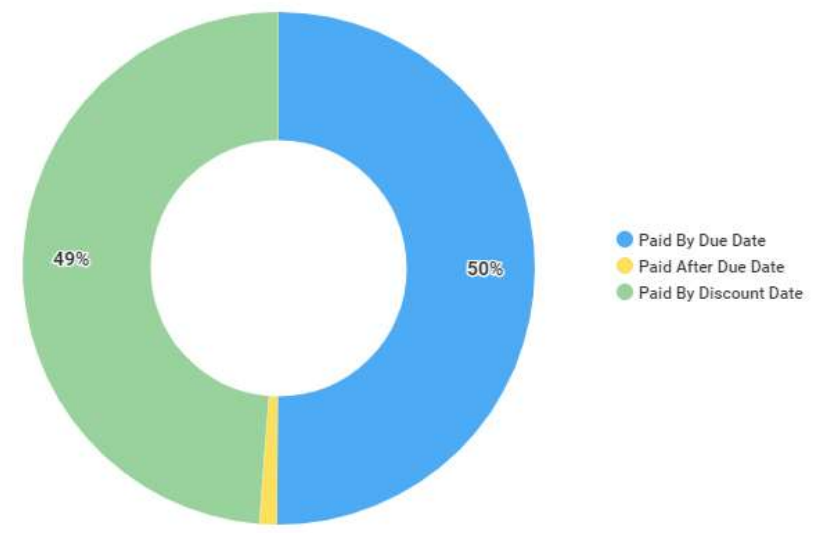
Rows per page: 50 201-250 of 679



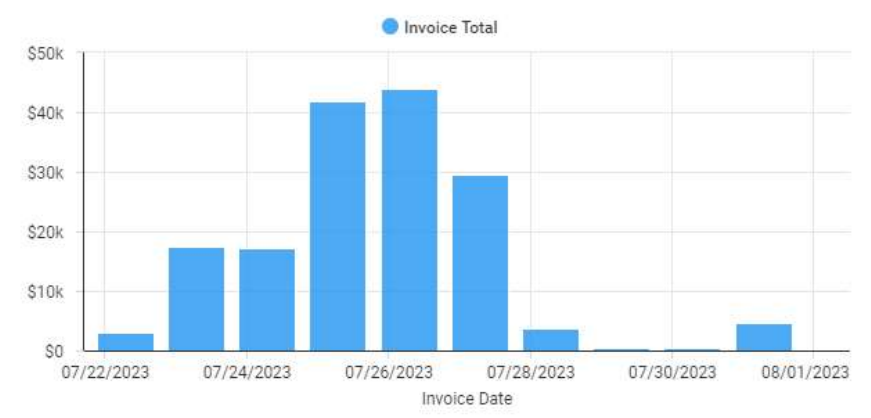
Payment Trends: What Vendors have been paid?



Payment Trends



Invoices Recently Paid





Questions
