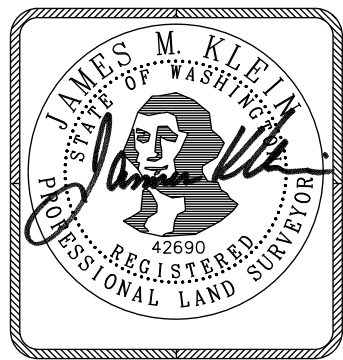
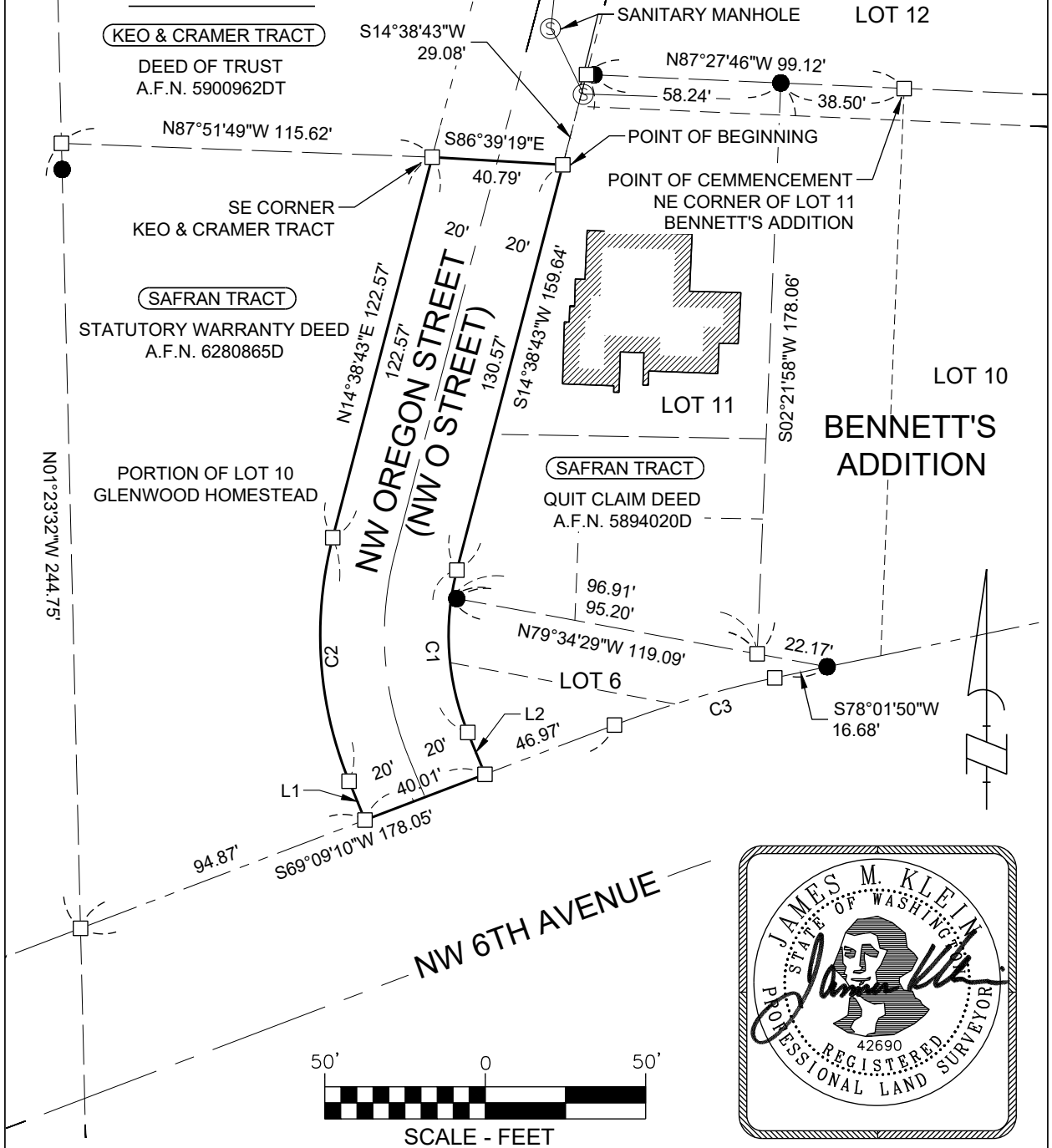


# EXHIBIT "B"



**BASIS OF BEARINGS**  
WASHINGTON STATE PLANE  
COORDINATES SYSTEM,  
NAD83(2011) EPOCH 2010.00,  
NORTH ZONE, GRID NORTH,  
GROUND DISTANCE

RIGHT OF WAY DEDICATION  
LOCATED THE NE 1/4 OF THE SW 1/4 OF  
SECTION 10, T. 1N., R. 3E., W.M. CITY OF CAMAS, CLARK COUNTY, WA



**Klein & Associates, Inc.**  
ENGINEERING • SURVEYING • PLANNING  
1411 13th Street • Hood River, OR 97031  
TEL: 541-386-3322 • FAX: 541-386-2515

PROJECT:	260204
FILE No:	260204
FILE PATH	
LAYOUT:	KA8.5X11
SURVEYED:	JK
DESIGN:	JK
DRAFT:	GD
APPROVE:	JK
DATE:	3-10-26
SHEET	1 OF 1 SHEETS

## EXHIBIT "B"

### LINE TABLE

LINE #	DIRECTION	LENGTH
L1	N22°18'47"W	13.09'
L2	S22°18'47"E	14.11'

### CURVE TABLE

CURVE	LENGTH	RADIUS	DELTA	CHORD BEARING	CHORD LENGTH
C1	51.61'	80.00'	36°57'38"	S3°49'58"E	50.72'
C2	77.41'	120.00'	36°57'38"	N3°49'58"W	76.07'



RIGHT OF WAY DEDICATION  
LOCATED THE NE 1/4 OF THE SW 1/4 OF  
SECTION 10, T. 1N., R. 3E., W.M. CITY OF CAMAS, CLARK COUNTY, WA



**Klein & Associates, Inc.**

ENGINEERING • SURVEYING • PLANNING  
1411 13th Street • Hood River, OR 97031  
TEL: 541-386-3322 • FAX: 541-386-2515

PROJECT: 260204  
FILE No: 260204  
FILE PATH  
LAYOUT: KA8.5X11  
SURVEYED: KA  
DESIGN: JK  
DRAFT: GD  
APPROVE: JK  
DATE: 3-10-26  
SHEET 2 OF 2 SHEETS