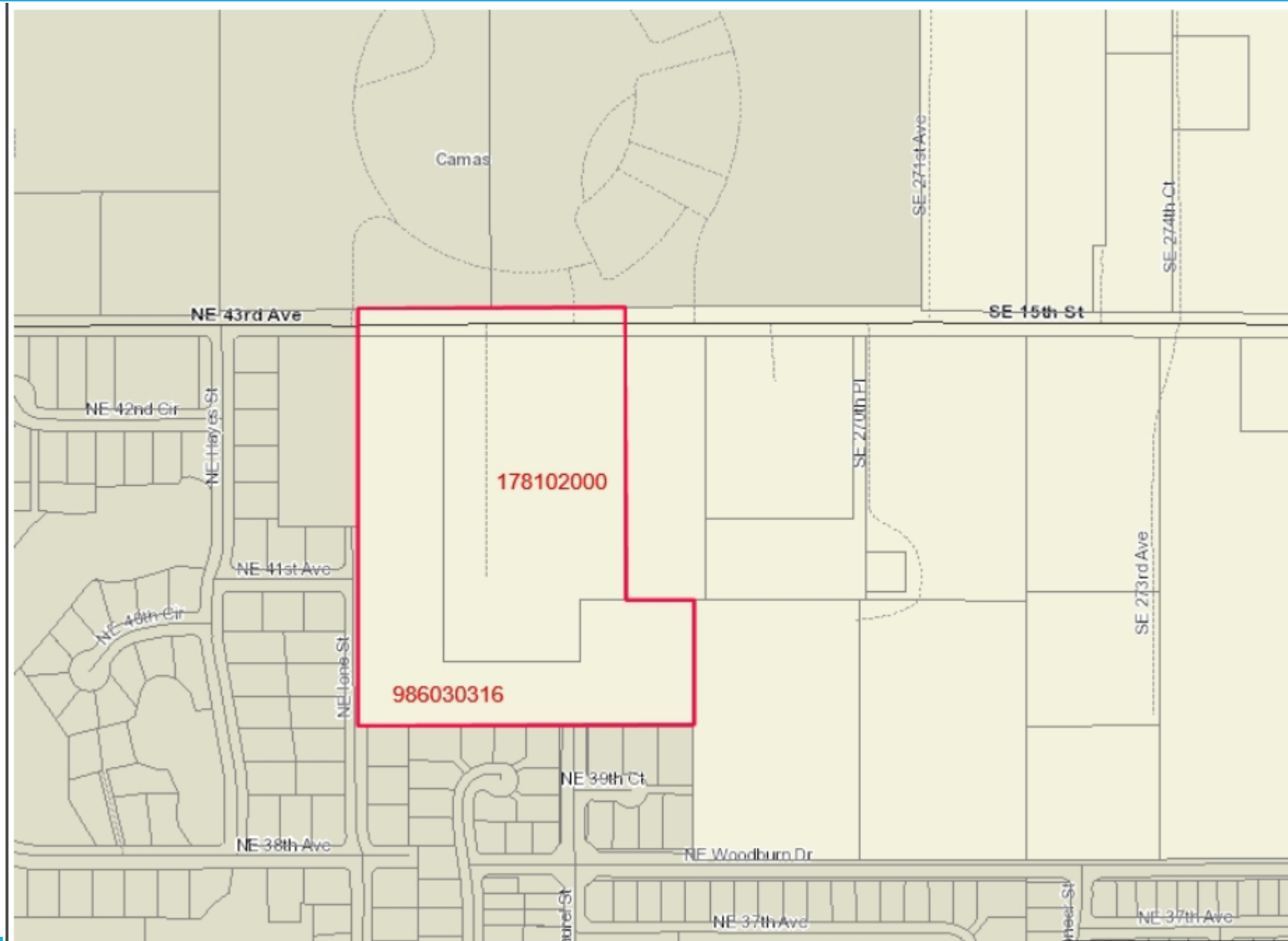


MCNELEY ANNEXATION

10% Notice of Intent

Staff: Robert Maul, Planning Manager



Camas

NE 43rd Ave

SE 15th St

NE 42nd Cir

NE Hayco St

178102000

SE 270th Pl

SE 274th Ct

NE 41st Ave

SE 273rd Ave

NE 40th Cir

NE Jones St

986030316

NE 39th Ct

NE 38th Ave

NE Woodburn Dr

Dunel St

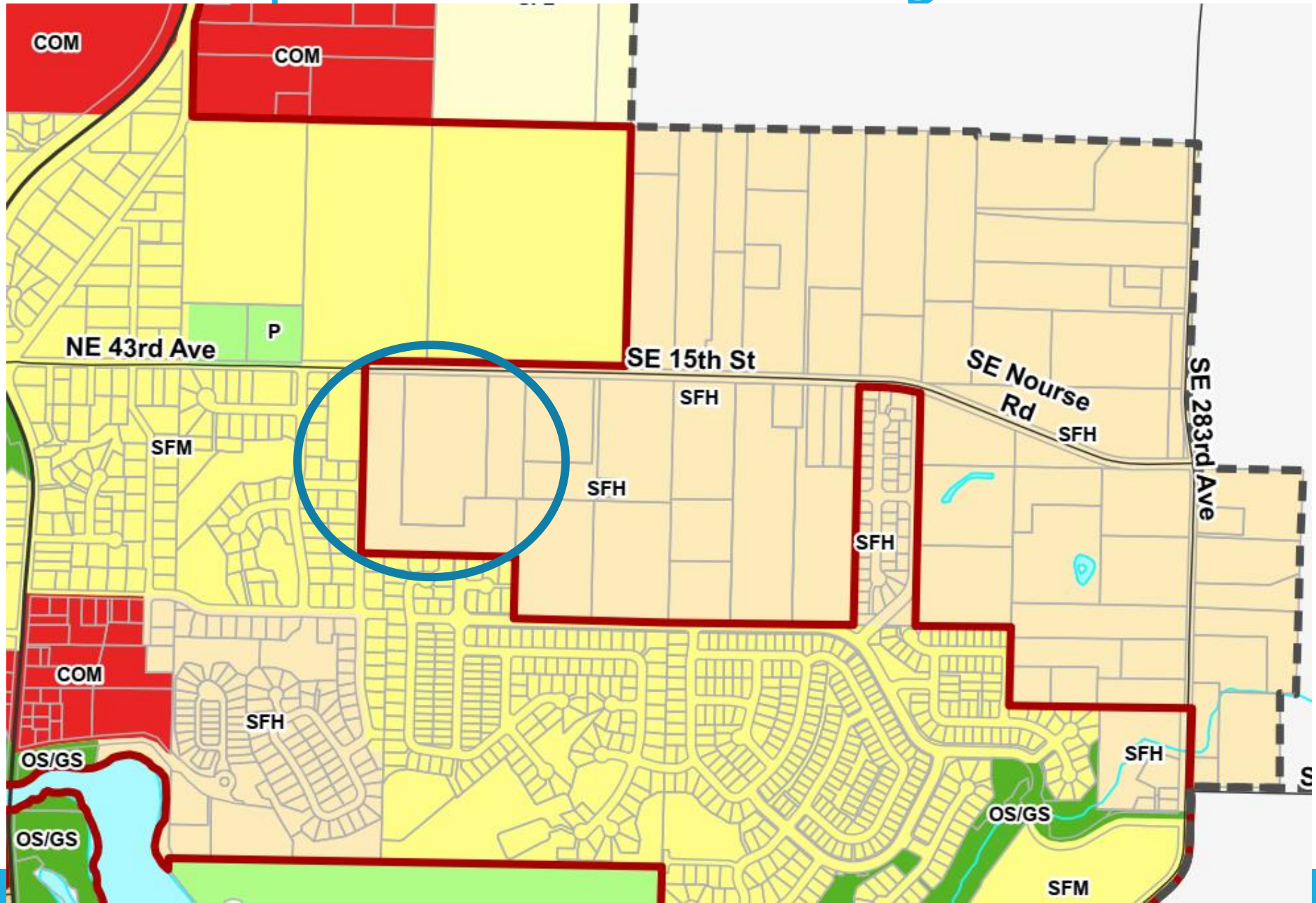
NE 37th Ave

Wesl St

NE 37th Ave



Comprehensive Plan Designation



Zoning Designation

