

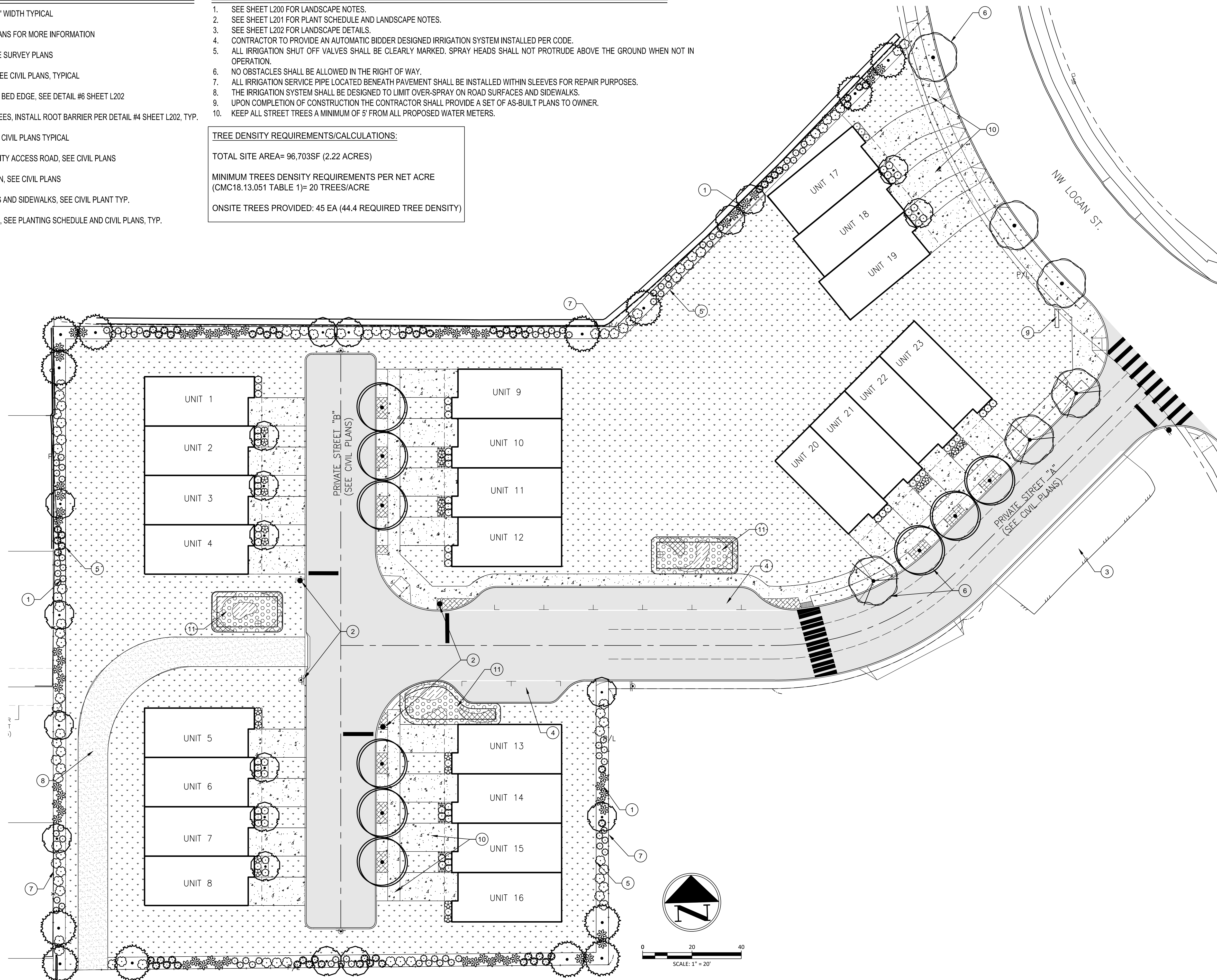
**KEY NOTES:**

- 1 L1 PLANTING BUFFER, 5' WIDTH TYPICAL
- 2 SIGNAGE, SEE CIVIL PLANS FOR MORE INFORMATION
- 3 EXISTING PARKING, SEE SURVEY PLANS
- 4 PROPOSED PARKING, SEE CIVIL PLANS, TYPICAL
- 5 SHOVEL CUT PLANTING BED EDGE, SEE DETAIL #6 SHEET L202
- 6 PROPOSED STREET TREES, INSTALL ROOT BARRIER PER DETAIL #4 SHEET L202, TYP.
- 7 6' PRIVACY FENCE, SEE CIVIL PLANS TYPICAL
- 8 EXISTING STORM FACILITY ACCESS ROAD, SEE CIVIL PLANS
- 9 MONUMENT ENTRY SIGN, SEE CIVIL PLANS
- 10 PROPOSED DRIVEWAYS AND SIDEWALKS, SEE CIVIL PLANS TYP.
- 11 STORMWATER BIOCELL, SEE PLANTING SCHEDULE AND CIVIL PLANS, TYP.

**GENERAL NOTES:**

1. SEE SHEET L200 FOR LANDSCAPE NOTES.
2. SEE SHEET L201 FOR PLANT SCHEDULE AND LANDSCAPE NOTES.
3. SEE SHEET L202 FOR LANDSCAPE DETAILS.
4. CONTRACTOR TO PROVIDE AN AUTOMATIC BIDDER DESIGNED IRRIGATION SYSTEM INSTALLED PER CODE.
5. ALL IRRIGATION SHUT OFF VALVES SHALL BE CLEARLY MARKED. SPRAY HEADS SHALL NOT PROTRUDE ABOVE THE GROUND WHEN NOT IN OPERATION.
6. NO OBSTACLES SHALL BE ALLOWED IN THE RIGHT OF WAY.
7. ALL IRRIGATION SERVICE PIPE LOCATED BENEATH PAVEMENT SHALL BE INSTALLED WITHIN SLEEVES FOR REPAIR PURPOSES.
8. THE IRRIGATION SYSTEM SHALL BE DESIGNED TO LIMIT OVER-SPRAY ON ROAD SURFACES AND SIDEWALKS.
9. UPON COMPLETION OF CONSTRUCTION THE CONTRACTOR SHALL PROVIDE A SET OF AS-BUILT PLANS TO OWNER.
10. KEEP ALL STREET TREES A MINIMUM OF 5' FROM ALL PROPOSED WATER METERS.

**TREE DENSITY REQUIREMENTS/CALCULATIONS:**  
 TOTAL SITE AREA= 96,703SF (2.22 ACRES)  
 MINIMUM TREES DENSITY REQUIREMENTS PER NET ACRE (CMC18.13.051 TABLE 1)= 20 TREES/ACRE  
 ONSITE TREES PROVIDED: 45 EA (44.4 REQUIRED TREE DENSITY)



FILE: W:\17312 KILLEN DEVELOPMENT\500 DESIGN\502 DRAWINGS\SHEETS\LANDSCAPE\17312 - LIX SITE PLAN.DWG



REVISIONS:


JOB NO.:	17312
DATE:	MARCH 2020
SCALE:	1" = 20'
DESIGNED BY:	NL
DRAWN BY:	NL
CHECKED BY:	EM

