

Formation &  
Implementation of  
Camas-Washougal  
Regional Fire  
Authority (RFA)



# Agenda



FORMATION OF  
PLANNING  
COMMITTEE



FORMULATION OF  
SERVICE PLAN



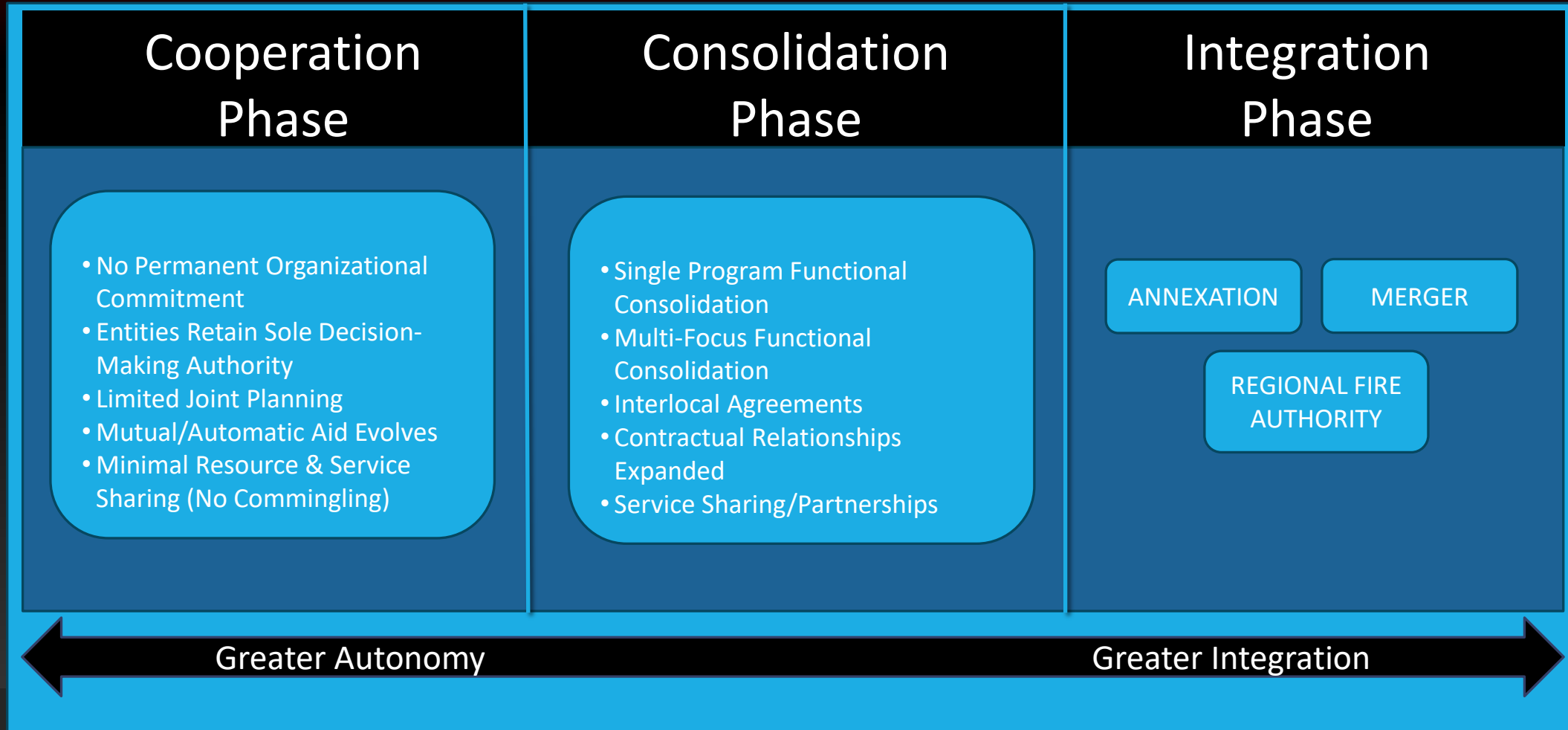
OVERVIEW OF PLAN  
COMPONENTS



NEXT STEPS



# The Amalgamation Process





# RFA Planning Committee Appointment

## Initiation of Planning Committee

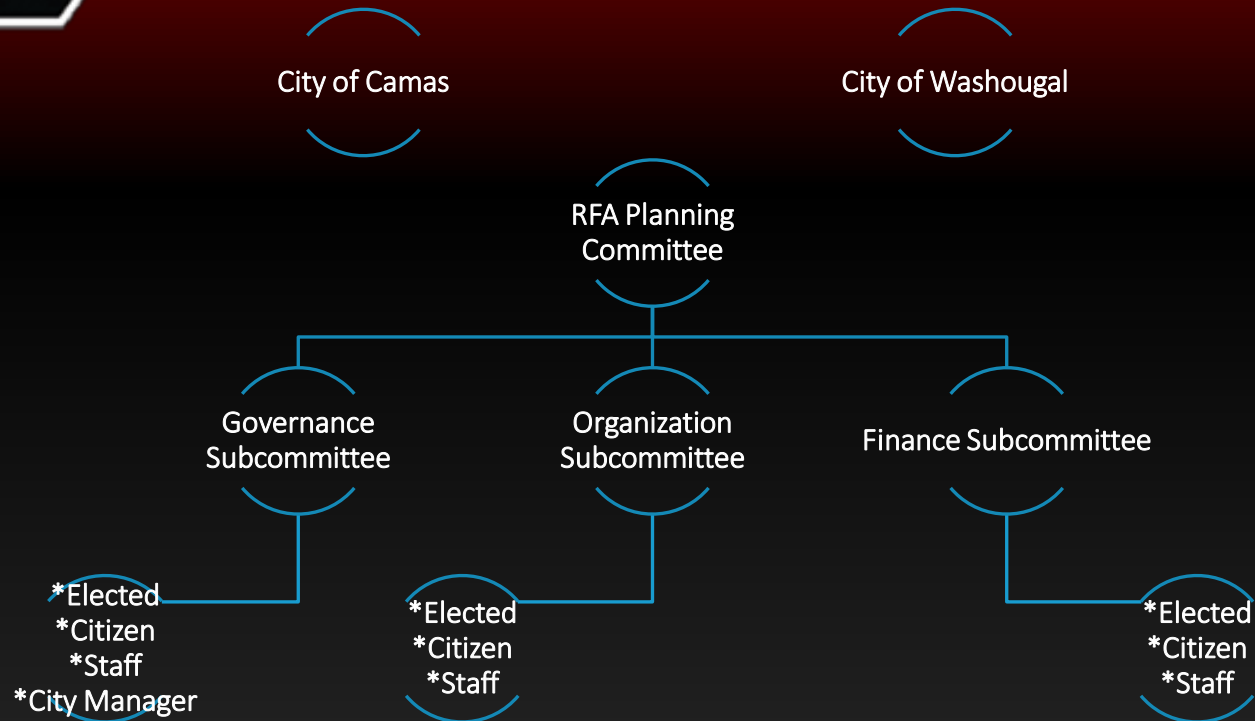
- Started in March 2024

## Appointment of Members

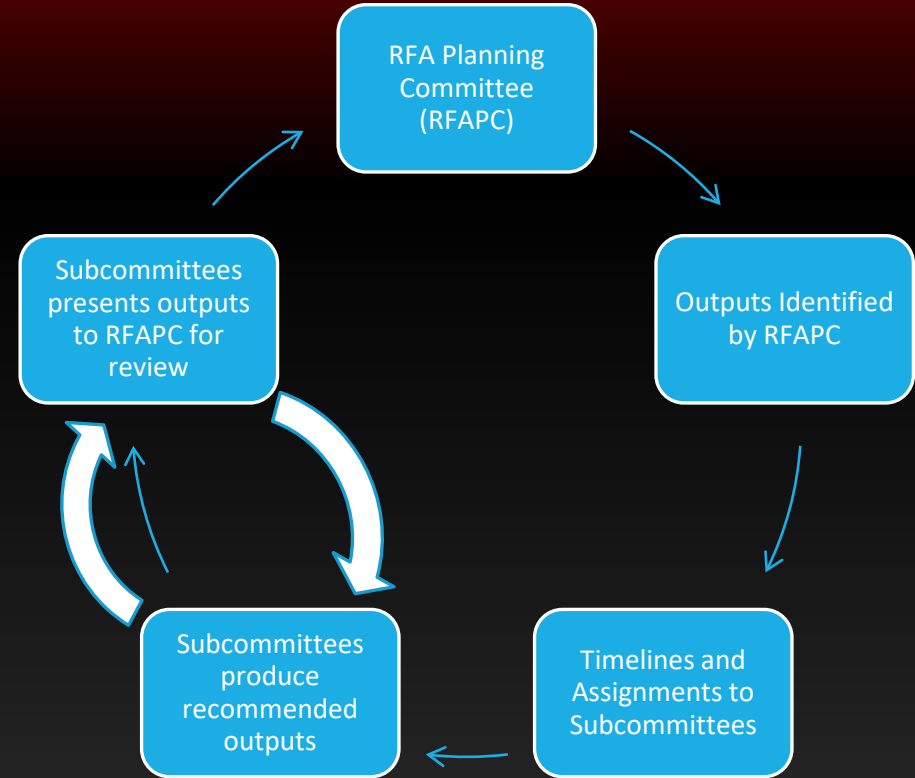
- Each governing body appoints three elected officials.
- Involves participating fire protection jurisdictions



## SUBCOMMITTEE STRUCTURE



## SUBCOMMITTEE PROCESS





# Overview of Plan Components:

Jurisdictional Boundaries

Finances

Transfer of Assets

Governance

Organizational Structure

Operations and Services

# ELEMENT OF THE PLAN

## Jurisdictional Boundaries:

On the Effective Date, the Jurisdictional Boundaries of the RFA shall be the legal boundaries of the Participating Jurisdictions.

# ELEMENT OF THE PLAN

## Finances:

- Interim Finances: Support for FD expenses from (Jan 1 thru June 1, 2026).
  - Proportionally allocated
  - Paid back 3 years.
- Initial Rate: \$1.05 per 1,000 valuation of combined service area.



# ELEMENT OF THE PLAN

## Transfer of Assets:

- Real Property
  - Fire Stations 42 – On Effective Date
  - Fire Station 41 – Upon Issuance of C of O
  - Fire Station 43 – Upon Issuance of C of O
- Non-Real Property
  - Apparatus
  - Equipment
  - Supplies, etc.
- Other
  - EMS Levy Funds, ERR Funds, GEMT Funds, Code Enforcement Fees, etc...

# ELEMENT OF THE PLAN

- Initial:

- (3) Appointed members Camas Council
- (3) Appointed members Washougal Council

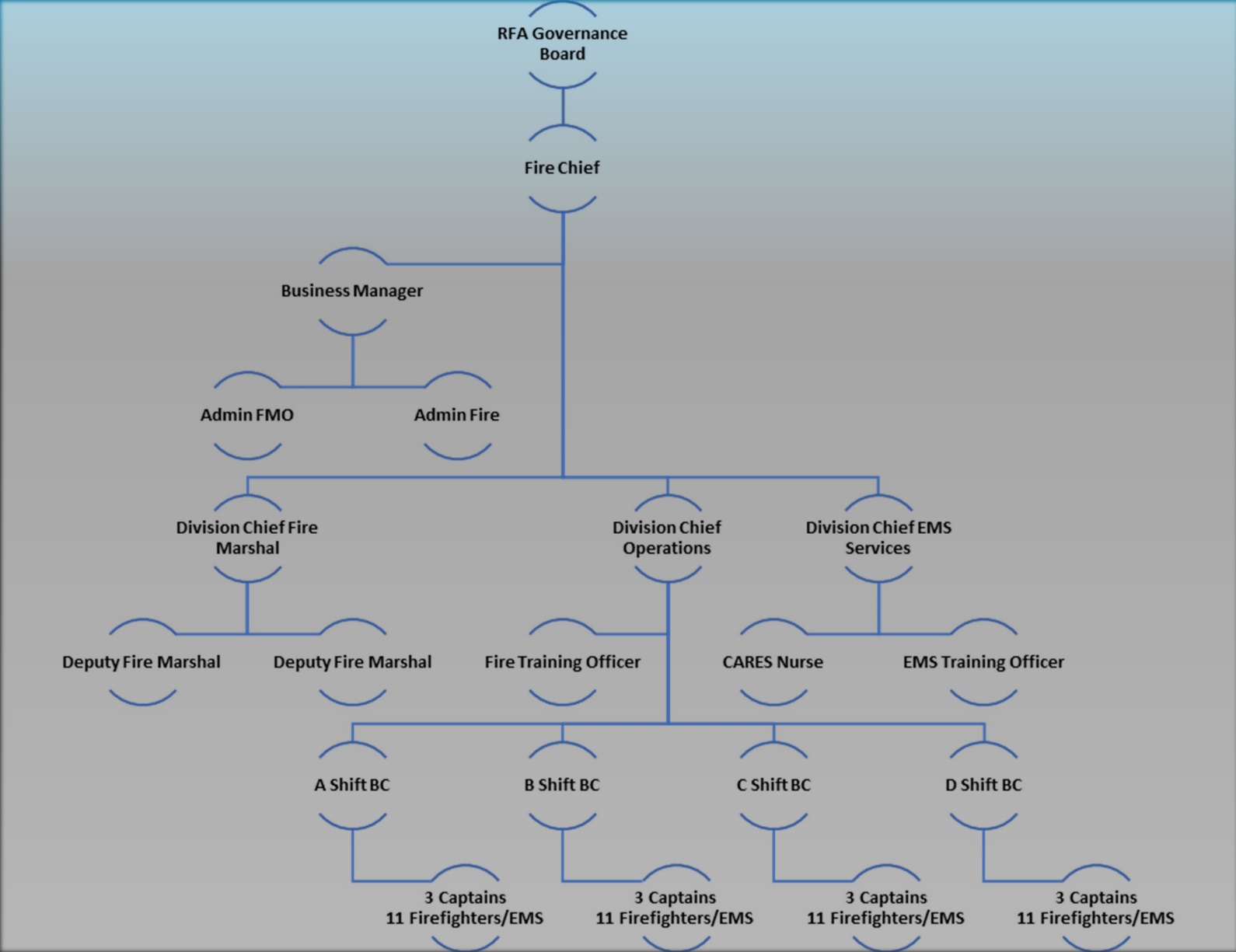
## Governance:

- Transition Jan 1, 2028:

- 5 Commissioner Districts
- Cities retain the right to appoint members

# ELEMENT OF THE PLAN

## Organizational Structure:



# ELEMENT OF THE PLAN

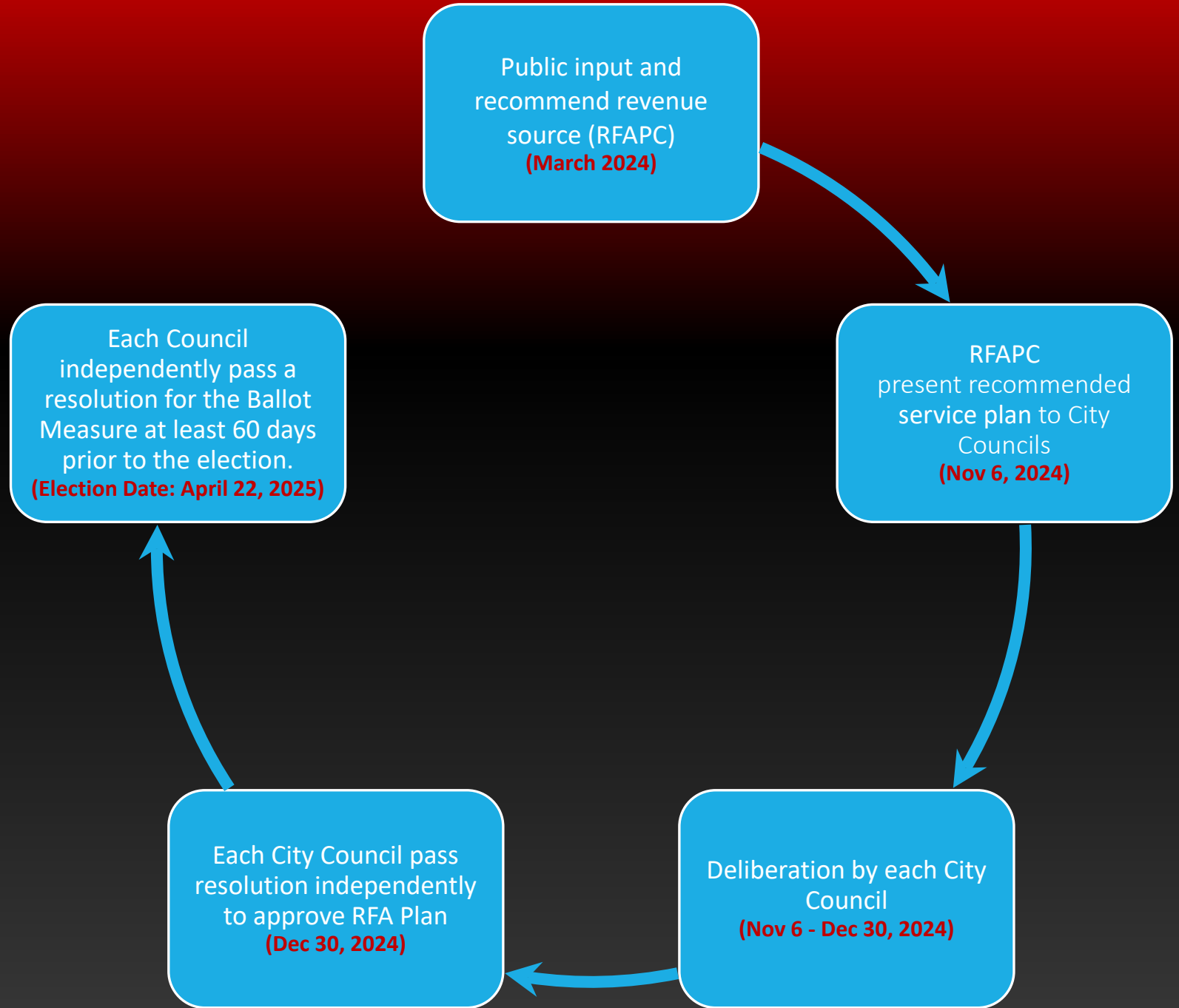
## Operations and Services:

- Standard of Cover
  - Fire Protection
  - Ambulance Services
  - Code Management
  - Public Education



# Formation of the RFA:

(NEXT STEPS)





Questions?