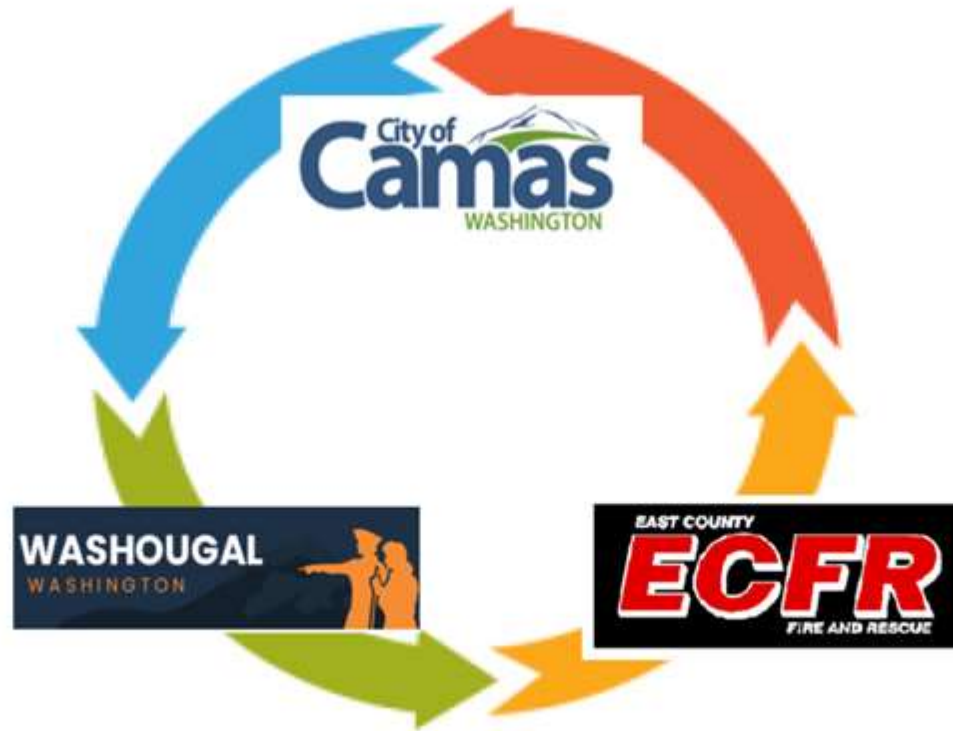
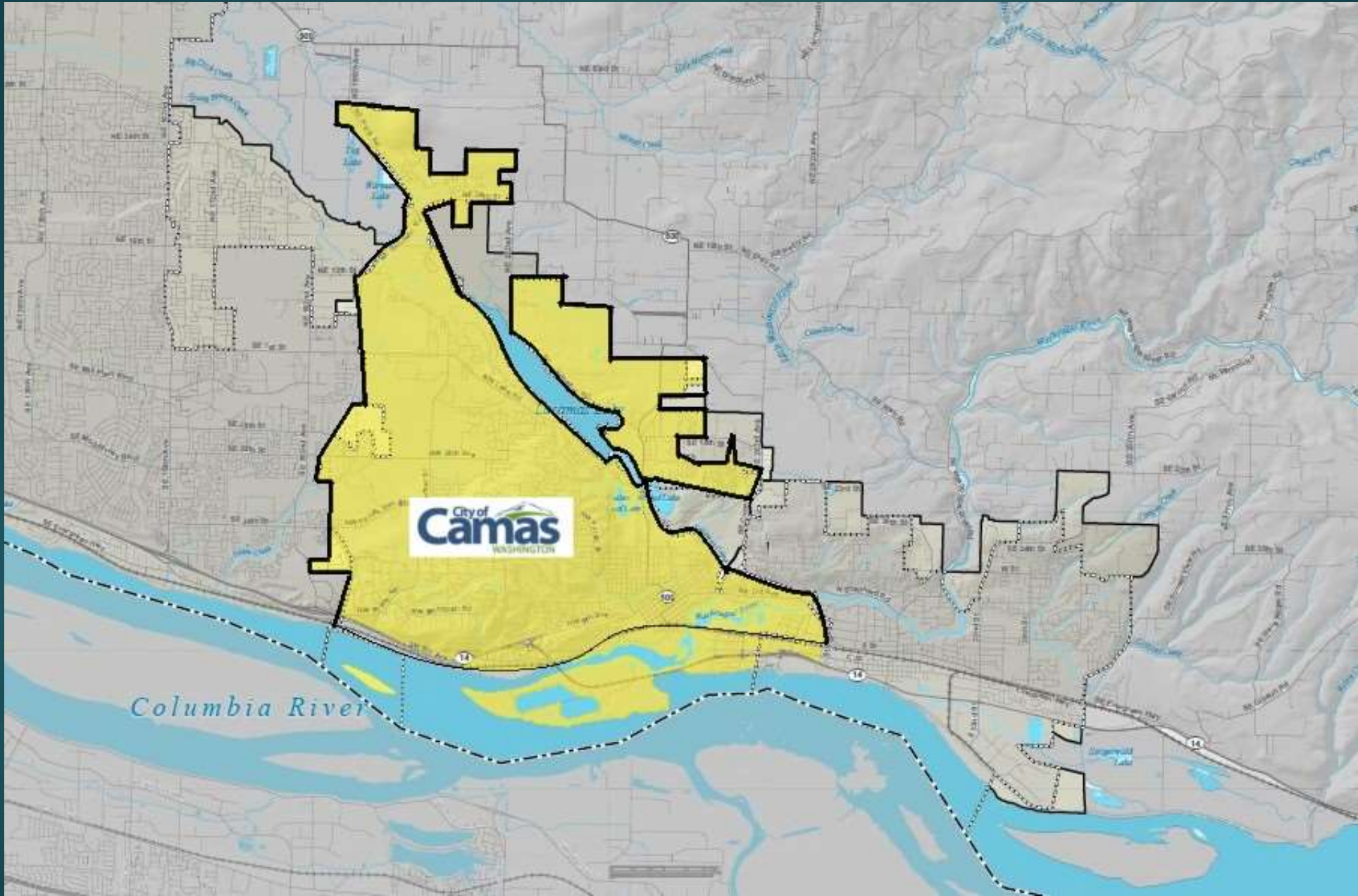
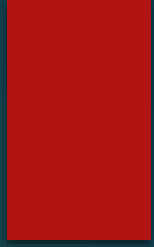
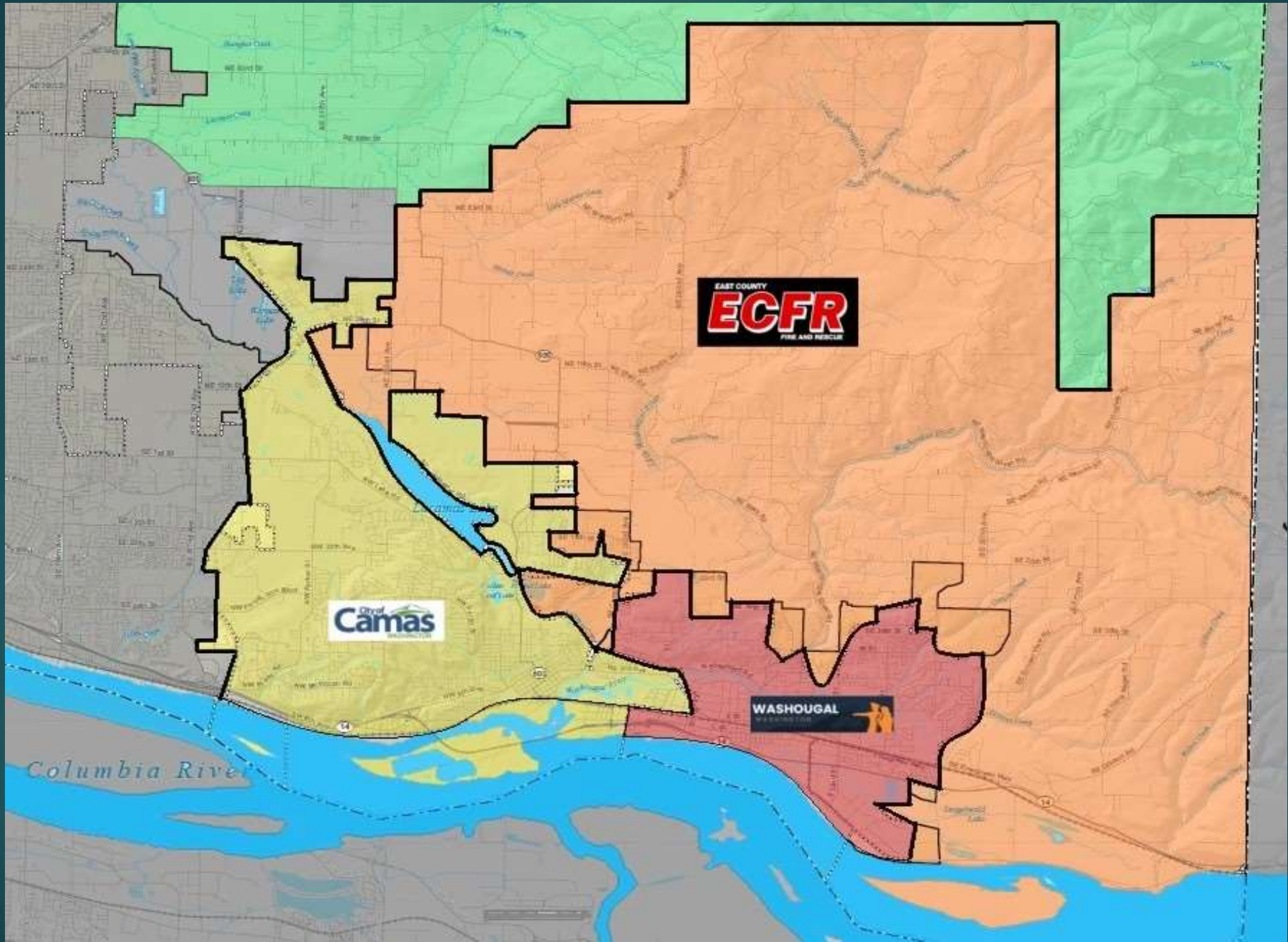


CWFD – A Geographic Perspective

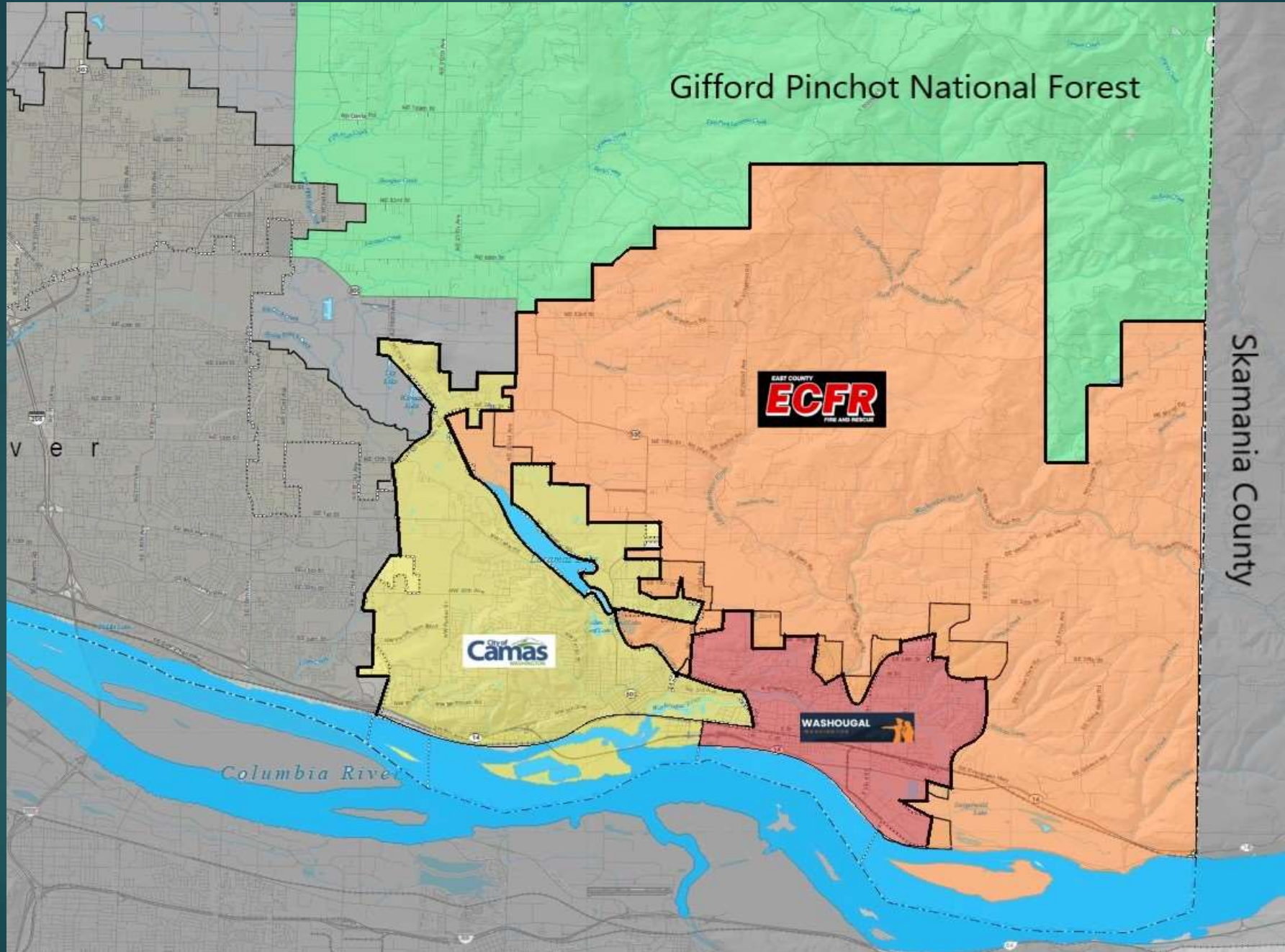


Presented by C. Free, Division Chief of EMS





Gifford Pinchot National Forest



Skamania County

ECFR
EASTERN CLATSOP COUNTY
FIRE AND RESCUE

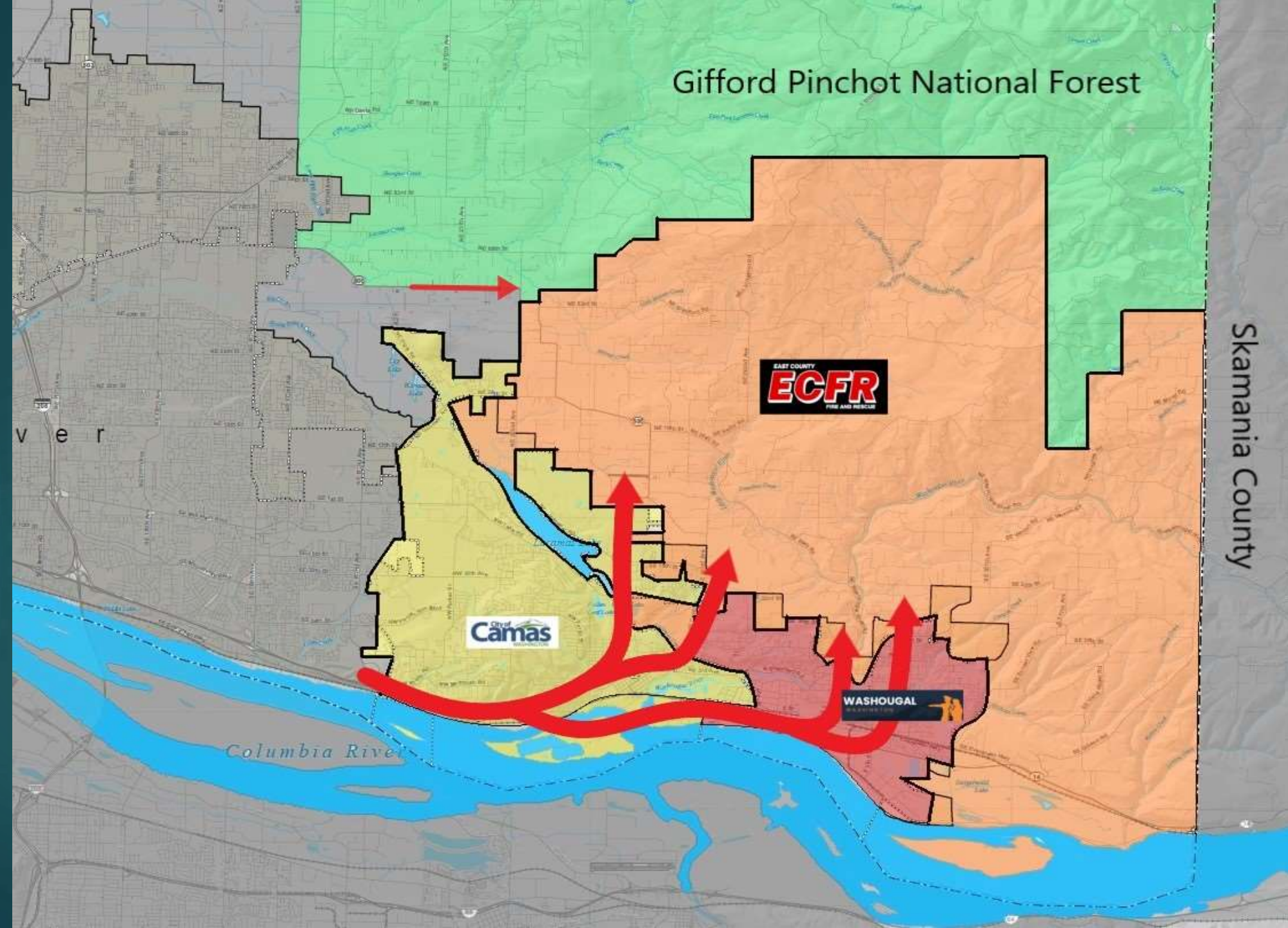
City of Camas

WASHOUGAL

v e r

Columbia River

Gifford Pinchot National Forest



Skamania County

City of Camas

EAST COUNTY
ECFR
FIRE AND RESCUE

WASHOUGAL
FIRE AND RESCUE

Columbia River

v e r

Camas Ambulance:



Advantages of Camas Ambulance:

- ▶ Quality of patient Care:
 - ▶ Continuity of care
 - ▶ Integration of service
 - ▶ Skills maintenance
 - ▶ Patient Advocacy
 - ▶ Right patient..right medical decision...right destination
 - ...right mode of transport



"Dissolving Camas Ambulance would be dismantling the highest functioning EMS system in the region." Lynn Wittwer, Clark County Medical Program Director

"After a comprehensive review, we found no compelling financial, operational or other data to support eliminating the provision of emergency medical transport services by CWF" -Assessment of the EMS Delivery System, ESC

"CWF EMS is highly regarded in the region for providing high-quality patient care. Providers are actively engaged in county-wide education, research efforts, and have a rigorous field training program to ensure new paramedics are adequately vetted and trained" -CWF Master Plan, ESC

Benefits of Ambulance Transport:

- ▶ Revenue:

- ▶ ECFR EMS Levy \$463K
- ▶ Washougal Contribution \$956K
- ▶ Ambulance Billing \$1.38M
- ▶ GEMT Income \$350K

- ▶ Efficiency in Utilizing Existing Resources

- ▶ Dual purpose personnel
- ▶ Augments Fire Suppression Capabilities

Options: Structural Governance

- ▶ Current options
 - ▶ RFA/Fire District
 - ▶ Modify Existing Washougal ILA Cost Allocation
 - ▶ Terminating Washougal ILA
 - ▶ Fee for service:
 - ▶ ECFR
 - ▶ Retain current arrangement established through the '3 party agreement'
 - ▶ EMS Levy pass-through to fund EMS Transport to ECFR
 - ▶ Washougal
 - ▶ Fee for service contract
 - ▶ Camas
 - ▶ Independent budgetary control
 - ▶ Stable and Predictable partner revenue contribution
 - ▶ Independent level of service control for the City of Camas
 - ▶ In service to the long term inevitability of a single East Clark County Fire and EMS protection district.

In Closing...

- ▶ I am not here for me, I am here for we...and we are here for them.

