

LSW Architects, PC
610 Esther St., Suite 200
Vancouver, WA 98660
360.694.8571
LSW-Architects.com

OPUS SCHOOL OF MUSIC

ROB & JANET MELTON

SCHEMATIC DESIGN

preliminary





lsw job number
2022-0045

OPUS SCHOOL OF MUSIC
ROB & JANET MELTON
726 NE 2ND AVE.
CAMAS, WA 98607

issue date
2022-10-13
SCHEMATIC DESIGN

ANY REPRODUCTION AND/OR MODIFICATION
IN ANY FORM OF THIS DOCUMENT IS
PROHIBITED WITHOUT THE WRITTEN
PERMISSION OF LSW ARCHITECTS, PC

COVER SHEET

		<p>ARCHITECT LSW ARCHITECTS</p> <p>610 ESTHER ST. SUITE 200 VANCOUVER, WASHINGTON 98660 p. 360.694.8571</p> 
		<p>STRUCTURAL ENGINEERING KRAMER GEHLEN & ASSOCIATES, INC.</p> <p>400 COLUMBIA STREET, SUITE 240 VANCOUVER, WASHINGTON 98660 p. 360.693.1621</p> 
		<p>CIVIL ENGINEERING STANDRIDGE INC.</p> <p>703 BROADWAY ST. SUITE 610 VANCOUVER, WASHINGTON 98660 p. 360.597.9240</p> 

G-000



LSW Architects, PC
610 Esther St., Suite 200
Vancouver, WA 98660
360.694.8571
LSW-Architects.com

preliminary

drawn by
JD
checked by
BY
lsw job number
2022-0045

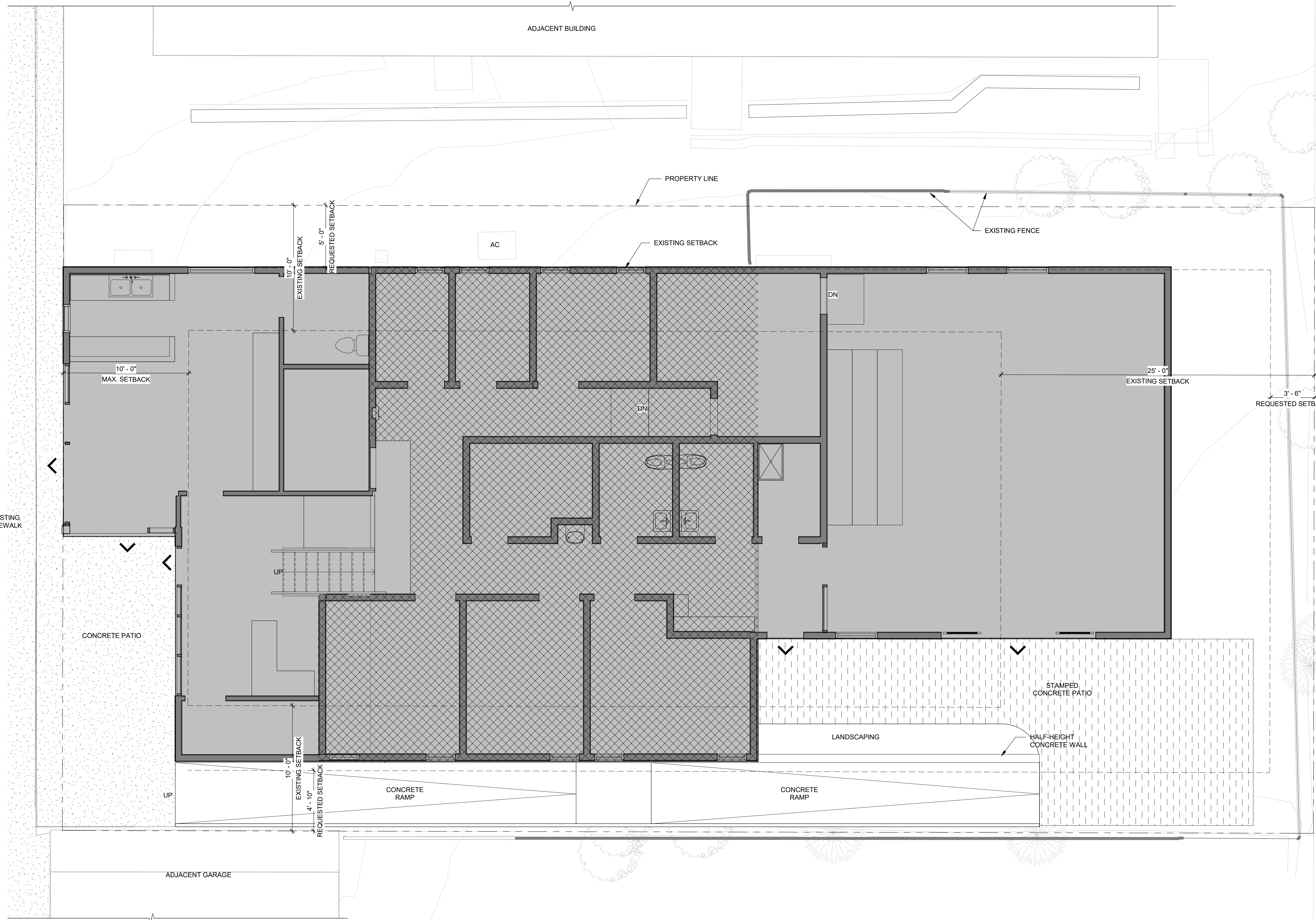
OPUS SCHOOL OF MUSIC
ROB & JANET MELTON
726 NE 2ND AVE.
CAMAS, WA 98607

issue date
2022-10-13
SCHEMATIC DESIGN
revisions

ANY REPRODUCTION AND/OR MODIFICATION
IN ANY FORM OF THIS DOCUMENT IS
PROHIBITED WITHOUT THE WRITTEN
PERMISSION OF LSW ARCHITECTS, PC

SITE PLAN

A-001
Scale As indicated



- SITE PLAN GENERAL NOTES**
1. SITE PLANS INDICATE LOCATIONS OF CIVIL, LANDSCAPING, IRRIGATION, MECHANICAL, ELECTRICAL AND PLUMBING COMPONENTS AND MAY NOT SHOW ALL COMPONENTS. REFER TO CIVIL, LANDSCAPING, MECHANICAL, ELECTRICAL AND PLUMBING FOR ADDITIONAL INFORMATION.
 2. ALL DIMENSIONS ARE FROM GRIDLINES OR FACE OF FINISH UNLESS OTHERWISE NOTED.
 3. INFORMATION SHOWN OUTSIDE THE PROPERTY LINES IS APPROXIMATE AND FOR INFORMATION ONLY.
 4. PAVEMENT CONTROL JOINTS AND EXPANSION JOINTS TO BE EQUALLY SPACED BETWEEN INTERSECTION POINTS. ALIGN WITH BUILDING COLUMNS AND PIERS, OFFSETS, CORNERS, OTHER BUILDING ELEMENTS, AND THE CENTER OF OPENINGS AS SHOWN UNLESS OTHERWISE NOTED. REFER TO TYPICAL CONTROL JOINT AND EXPANSION JOINT DETAILS.
 5. IN THE EVENT THAT ANY ITEM OF ARCHAEOLOGICAL INTEREST IS UNCOVERED DURING THE COURSE OF A PERMITTED OR APPROVED GROUND-DISTURBING ACTION OR ACTIVITY, ALL GROUND-DISTURBING ACTIVITY SHALL IMMEDIATELY CEASE. THE APPLICANT SHALL IMMEDIATELY NOTIFY THE AGENCY HAVING JURISDICTION AND DEPARTMENT OF ARCHAEOLOGY AND HISTORIC PRESERVATION.
 6. EXISTING PARKING TO REMAIN AS-IS, UNALTERED, EXCEPT WHERE NOTED.

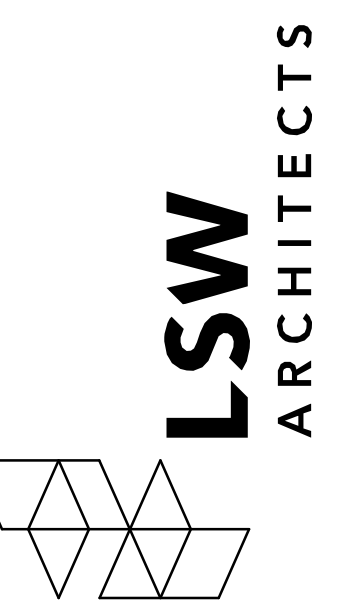
SITE PLAN LEGEND

	EXISTING BUILDING
	NEW BUILDING

1 SITE PLAN
SCALE: 1/4" = 1'-0"

For Information Only
Not for
Construction

10/14/2022 10:44:21 AM

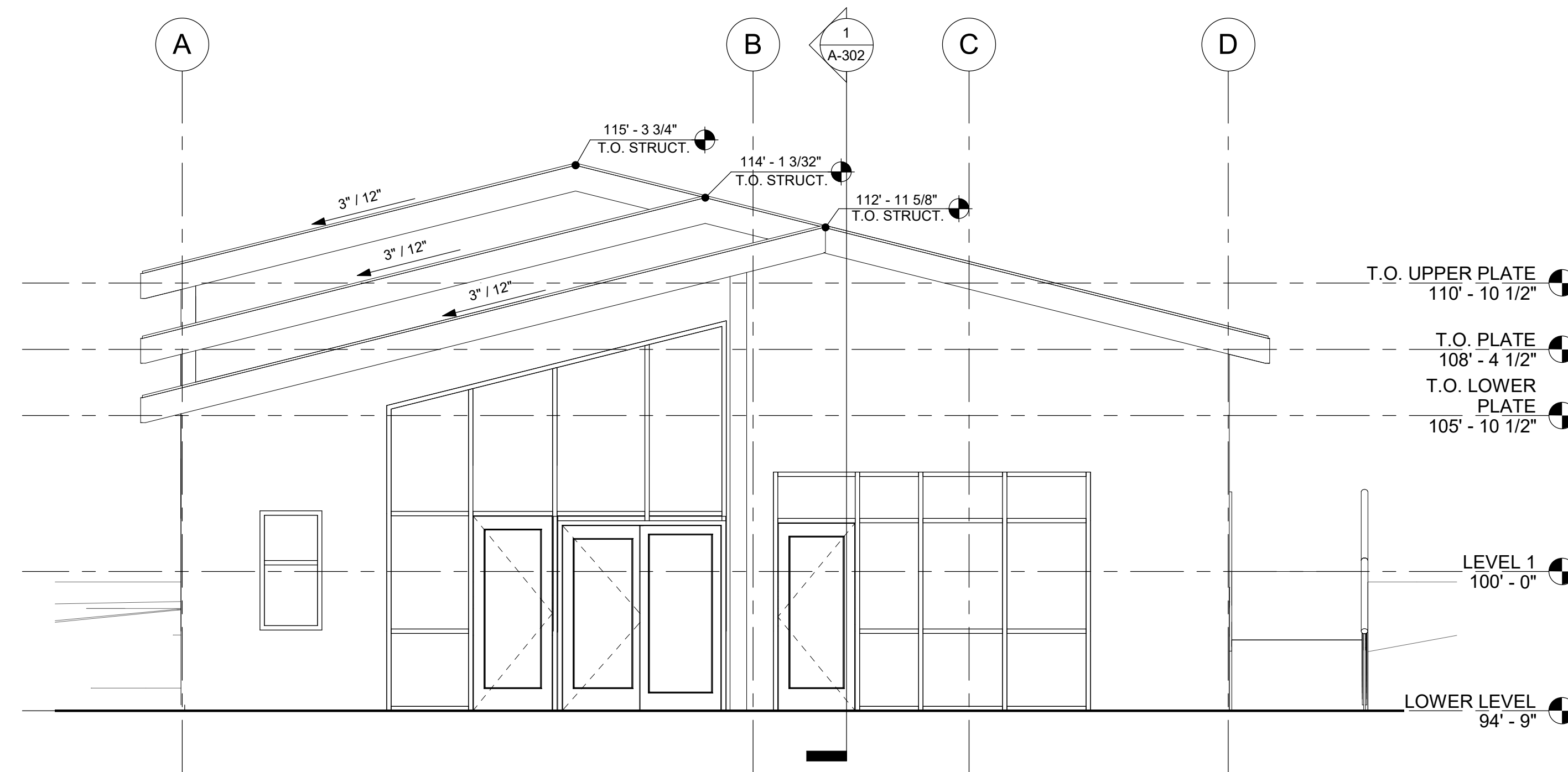


LSW Architects, PC
610 Esther St., Suite 200
Vancouver, WA 98660
360.694.8571
LSW-Architects.com

preliminary

drawn by
JD
checked by
BY

lsw job number
2022-0045

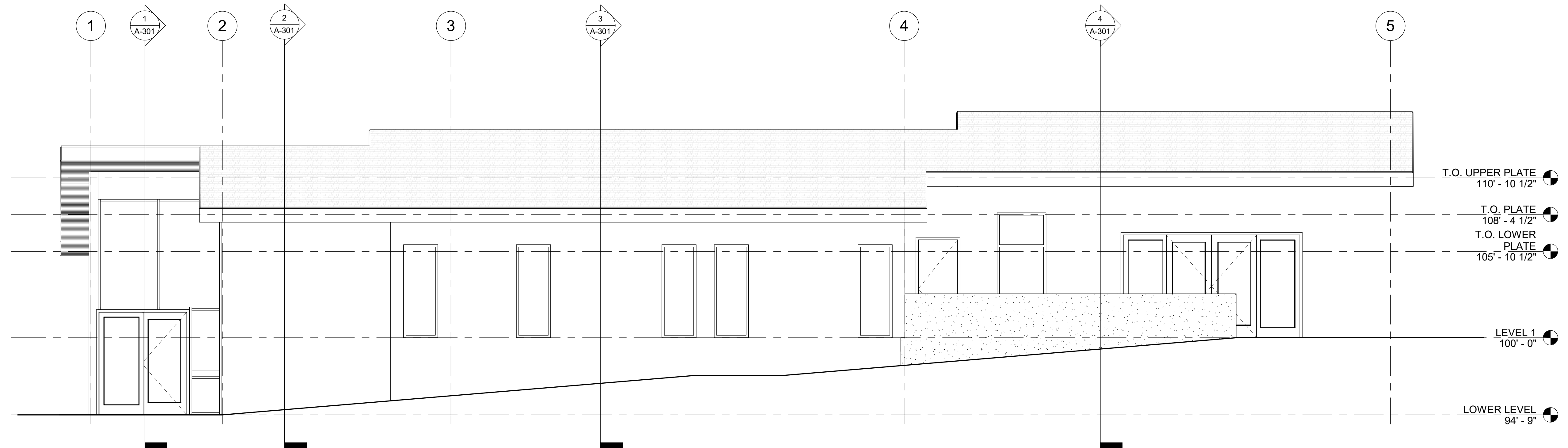


- EXTERIOR ELEVATIONS GENERAL NOTES**
- EXTERIOR ELEVATIONS INDICATE LOCATIONS OF STRUCTURAL, MECHANICAL, ELECTRICAL, AND PLUMBING COMPONENTS AND MAY NOT SHOW ALL COMPONENTS TO BE LOCATED IN OR IN THE CEILINGS. REFER TO STRUCTURAL, MECHANICAL, ELECTRICAL AND PLUMBING FOR ADDITIONAL INFORMATION.
 - ALL DIMENSIONS ARE FROM GRIDLINES OR FACE OF FINISH UNLESS OTHERWISE NOTED.
 - LOCATION AND SPACING OF MASONRY CONTROL JOINTS ARE TO BE AS SHOWN ON EXTERIOR ELEVATIONS UNLESS OTHERWISE NOTED.
 - MATERIAL JOINTS ARE TO BE EQUALLY SPACED AND/OR CENTERED WITH ADJACENT ELEMENTS AS SHOWN UNLESS OTHERWISE NOTED.
 - REFER TO DOOR AND WINDOW TYPES FOR DOOR, WINDOW AND LOUVER DIMENSIONS, LOCATION AND SPACING OF MULLIONS/FRAME MEMBERS AND TYPICAL DETAIL REFERENCES.
 - OVERALL EXTERIOR ELEVATIONS ARE FOR REFERENCE ONLY. REFER TO ENLARGED FLOOR PLAN SHEETS.
 - REFER TO EXTERIOR ELEVATIONS, BUILDING SECTIONS, AND WALL SECTIONS FOR WALL CONSTRUCTION ABOVE CUT-LINE.

KEYNOTE LEGEND

Key Value	Keynote Text

1 BUILDING ELEVATION - WEST
SCALE: 1/4" = 1'-0"



2 BUILDING ELEVATION - SOUTH
SCALE: 1/4" = 1'-0"

OPUS SCHOOL OF MUSIC
ROB & JANET MELTON
726 NE 2ND AVE.
CAMAS, WA 98607

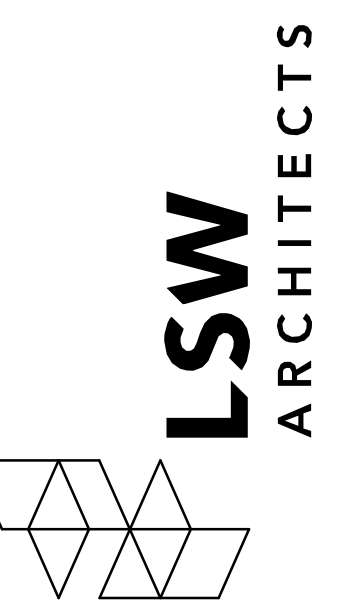
issue date
2022-10-13
SCHEMATIC DESIGN
revisions

ANY REPRODUCTION AND/OR MODIFICATION IN ANY FORM OF THIS DOCUMENT IS PROHIBITED WITHOUT THE WRITTEN PERMISSION OF LSW ARCHITECTS, PC

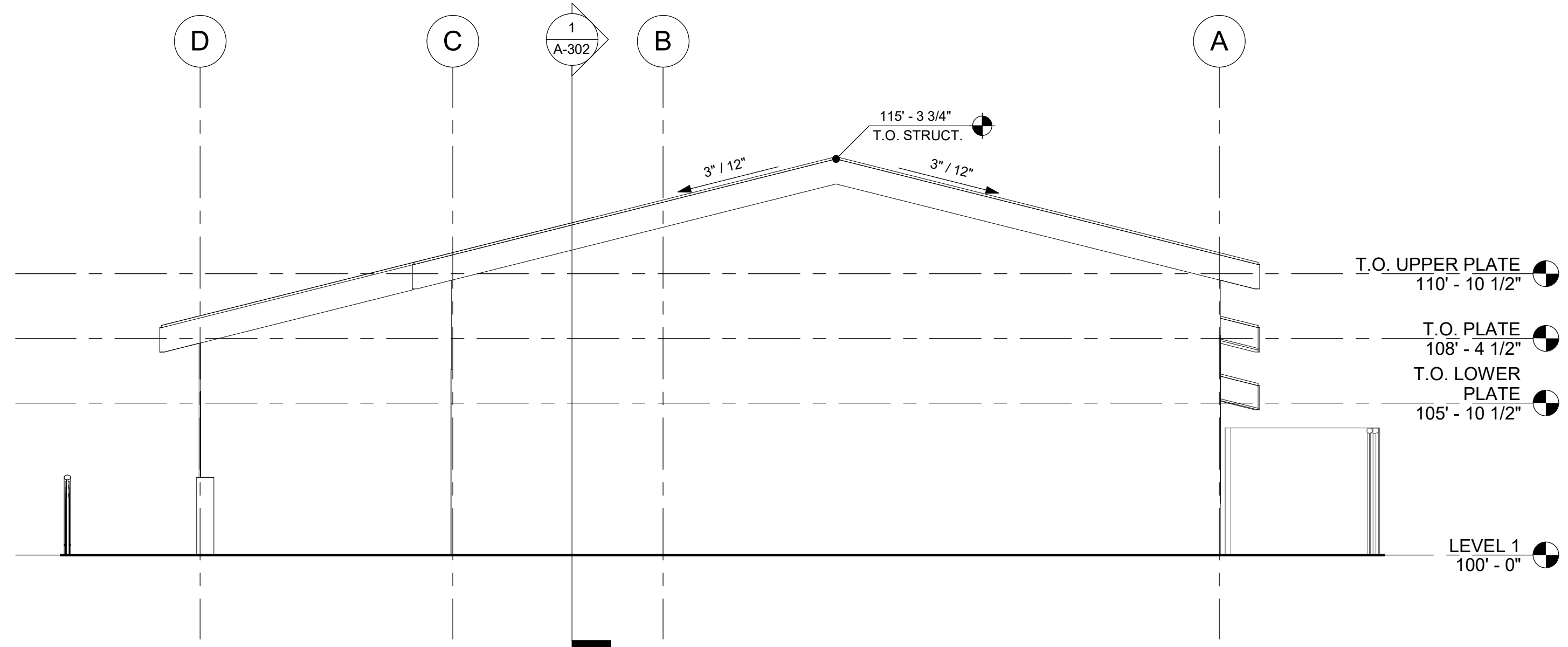
BUILDING ELEVATIONS

For Information Only
Not for Construction

A-201
Scale As indicated



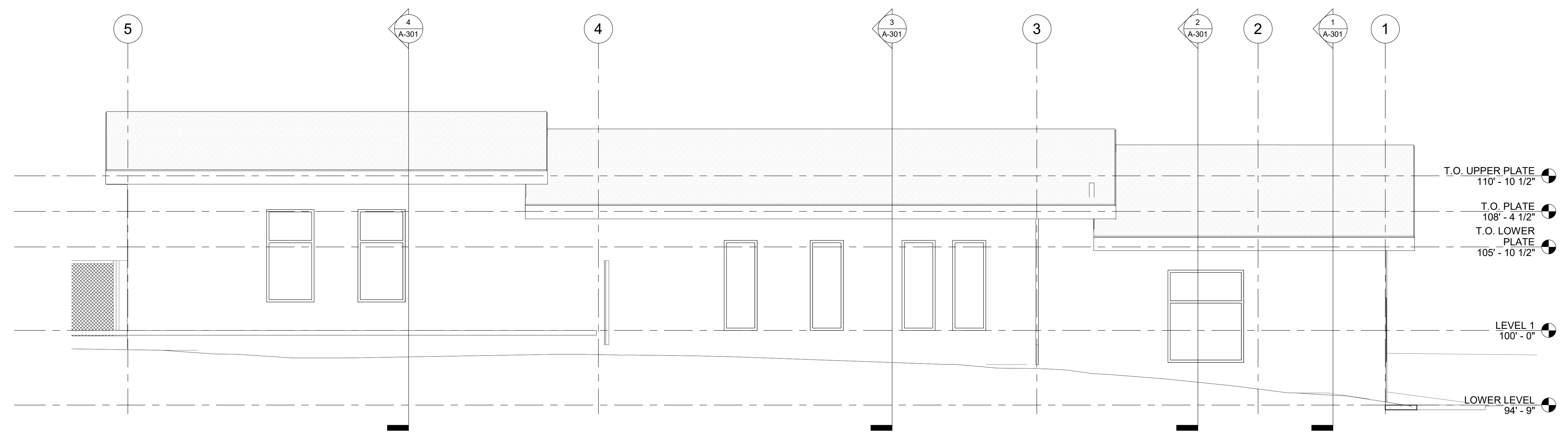
LSW Architects, PC
610 Esther St., Suite 200
Vancouver, WA 98660
360.694.8571
LSW-Architects.com



EXTERIOR ELEVATIONS GENERAL NOTES
REFER TO SHEET A-201 FOR EXTERIOR ELEVATION GENERAL NOTES.

KEYNOTE LEGEND	
Key Value	Keynote Text

1 BUILDING ELEVATION - EAST
SCALE: 1/4" = 1'-0"



2 BUILDING ELEVATION - NORTH
SCALE: 1/4" = 1'-0"

preliminary

drawn by
JD
checked by
BY

lsw job number
2022-0045

OPUS SCHOOL OF MUSIC
ROB & JANET MELTON
726 NE 2ND AVE.
CAMAS, WA 98607

issue date
2022-10-13
SCHEMATIC DESIGN
revisions

ANY REPRODUCTION AND/OR MODIFICATION IN ANY FORM OF THIS DOCUMENT IS PROHIBITED WITHOUT THE WRITTEN PERMISSION OF LSW ARCHITECTS, PC

BUILDING ELEVATIONS

For Information Only
Not for Construction

A-202
Scale As indicated

