

Wall luminaire · Narrow beam upward · Narrow beam downward

Application

Wall luminaires with directed narrow beam light distribution on two sides. Arranged individually or in groups, they are great design elements for a host of lighting applications.

Materials

- Clear safety glass
- Marine grade, copper free (≤0.3% copper content) A360.0 aluminum alloy
- High temperature silicone gasket
- Mechanically captive stainless steel fasteners
- Pure anodized aluminum reflector

NRTL listed to North American Standards, suitable for wet locations
Protection class IP 65

Weight: 7.5 lbs.

Electrical

Operating voltage	120-277V AC
Minimum start temperature	-40° C
LED module wattage	15.8 W
System wattage	21.0 W
Controllability	0-10V dimmable
Color rendering index	Ra > 80
Luminaire lumens	1047 lm
LED service life (L70)	60000 hrs

LED color temperature

- 4000K (K4)
- 3500K (K35)
- 3000K (K3)
- 2700K (K27)

BEGA can supply you with suitable LED replacement modules for up to 20 years after the purchase of LED luminaires - see website for details

Finish

All BEGA standard finishes are matte, textured powder coat with minimum 3 mil thickness. BEGA Unidure® finish provides superior fade protection in Black, Bronze, and Silver. BEGA standard White is a super durable polyester powder. Optionally available RAL, custom, and premium colors provided in polyester powder and/or liquid paint.

Available colors

- Black (BLK)
- Silver (SLV)
- Natural Bronze (NTB)
- CUS:
- Bronze (BRZ)
- White (WHT)
- RAL:

Type:

BEGA Product:

Project:

Modified:

Available options

- AMB Amber LED
- CUS Custom finish
- FSC Fusing
- MGU Marine grade undercoat
- NTB Natural bronze (premium finish)
- RAL RAL finish

Available accessories

- B79547 Surface mounted wiring box

See individual accessory spec sheet for details.

Included (available for pre-shipment)

- B19537 Narrow opening wiring box



Wall luminaire · Narrow beam upward · Narrow beam downward

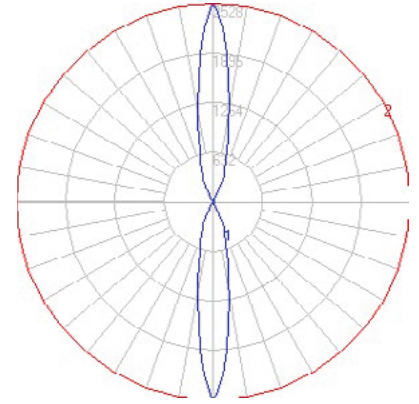
	LED	□	A	B	C	D
B66516	15.8 W	20°	4 ³ / ₈	19 ⁵ / ₈	6 ³ / ₈	1 ⁵ / ₈

BEGA 1000 BEGA Way, Carpinteria, CA 93013 (805) 684-0533 info@bega-us.com

BEGA

Photometric Filename: 66516.IES

TEST: BE_66516
 TEST LAB: BEGA
 DATE: 6/28/2017
 LUMINAIRE: 66 516
 LAMP: 15.8W LED

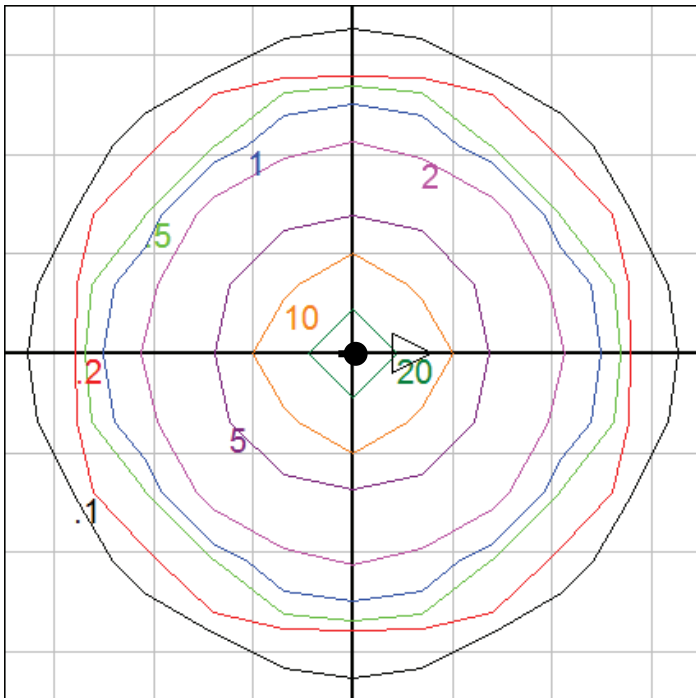


Characteristics

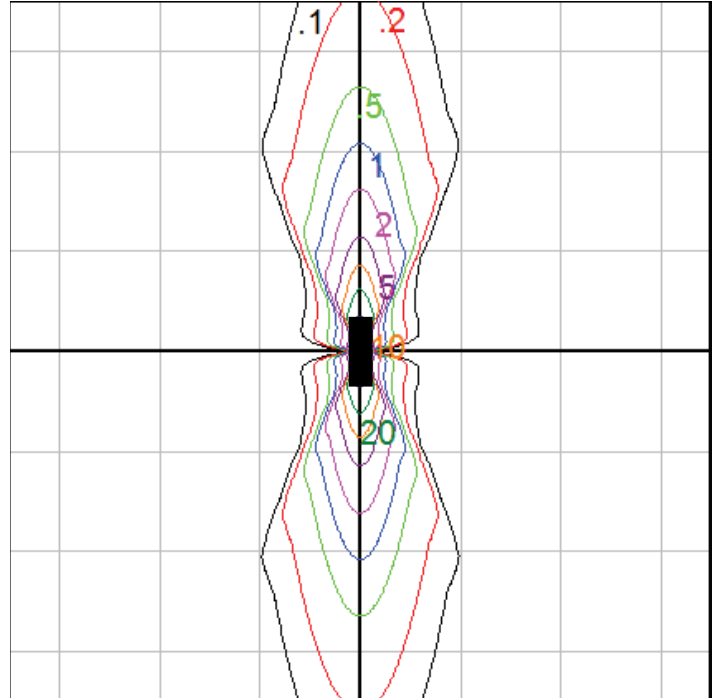
NEMA Type	4 H x 4 V
Maximum Candela	3011.85
Maximum Candela Angle	0 H 0 V
Horizontal Beam Angle (50%)	19.6
Vertical Beam Angle (50%)	19.6
Horizontal Field Angle (10%)	54.6
Vertical Field Angle (10%)	54.6
Lumens Per Lamp	N.A. (absolute)
Total Lamp Lumens	N.A. (absolute)
Beam Lumens	178
Beam Efficiency	N.A.
Field Lumens	560
Field Efficiency	N.A.
Spill Lumens	93
Luminaire Lumens	1047
Total Efficiency	N.A.
Total Luminaire Watts	21

Zonal Lumen Summary

Zone	Lumens
0-10	135.17
10-20	204.41
20-30	127.32
30-40	23.28
40-50	10.76
50-60	5.90
60-70	7.09
70-80	6.51
80-90	3.10
90-100	0.00
100-110	3.10
110-120	6.51
120-130	7.09
130-140	10.58
140-150	13.77
150-160	96.20
160-170	207.45
170-180	178.83



Note: Wall mount fixture. Iso-grid on floor
 Mounting Height = 10 ft. Grid Spacing = 2.5 ft.



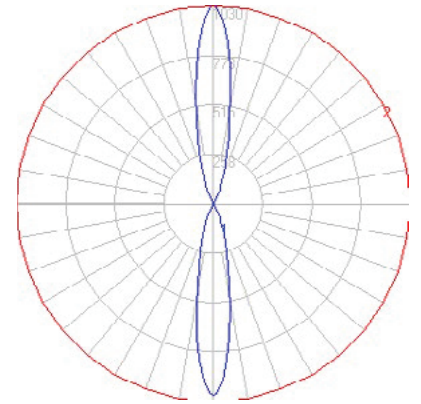
Note: Wall mount fixture. Iso-grid on wall
 Grid Spacing = 5 ft.

In the interest of product improvement, BEGA reserves the right to make technical changes without notice.

BEGA

Photometric Filename: 66516AMB.IES

TEST: L061914306
 TEST LAB: LIGHT LABORATORY, INC.
 DATE: 7/2/2019
 LUMINAIRE: 66 516 Amber
 LAMP: 18.0W LED

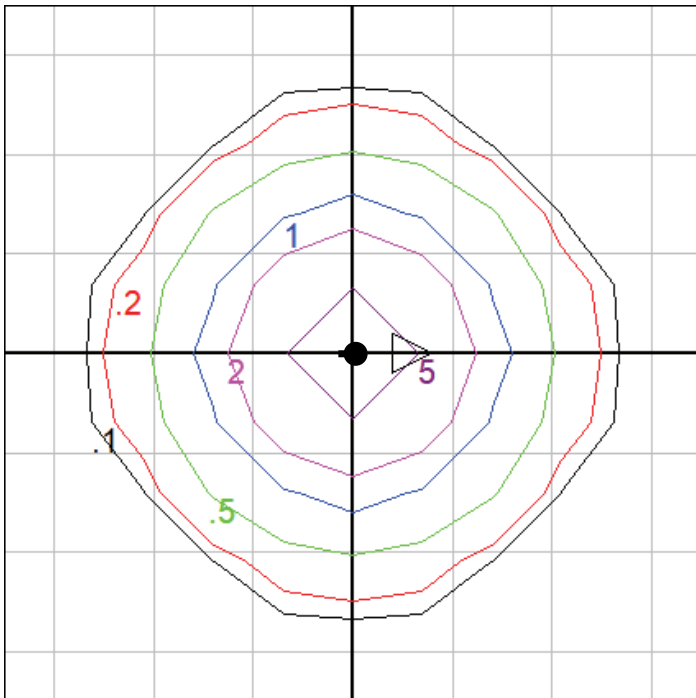


Characteristics

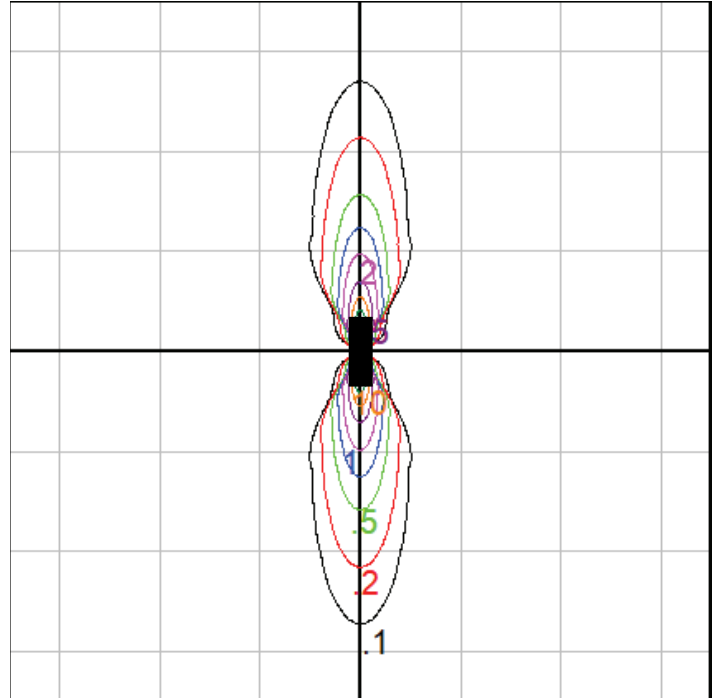
NEMA Type	3 H x 3 V
Maximum Candela	999
Maximum Candela Angle	0 H 0 V
Horizontal Beam Angle (50%)	19.7
Vertical Beam Angle (50%)	19.7
Horizontal Field Angle (10%)	45.4
Vertical Field Angle (10%)	45.4
Lumens Per Lamp	N.A. (absolute)
Total Lamp Lumens	N.A. (absolute)
Beam Lumens	61
Beam Efficiency	N.A.
Field Lumens	155
Field Efficiency	N.A.
Spill Lumens	34
Luminaire Lumens	384
Total Efficiency	N.A.
Total Luminaire Watts	22.49
Ballast Factor	1.00

Zonal Lumen Summary

Zone	Lumens
0-10	58.11
10-20	80.80
20-30	38.08
30-40	8.03
40-50	2.20
50-60	0.96
60-70	0.47
70-80	0.00
80-90	0.00
90-100	0.00
100-110	0.00
110-120	0.00
120-130	0.47
130-140	1.93
140-150	3.40
150-160	30.39
160-170	79.23
170-180	79.54



Note: Wall mount fixture. Iso-grid on floor
 Mounting Height = 10 ft. Grid Spacing = 2.5 ft.



Note: Wall mount fixture. Iso-grid on wall
 Grid Spacing = 5 ft.

In the interest of product improvement, BEGA reserves the right to make technical changes without notice.



WST LED

Architectural Wall Sconce



Catalog Number

Notes

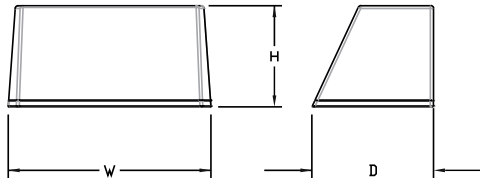
Type

Hit the Tab key or mouse over the page to see all interactive elements.

Specifications

Luminaire

- Height:** 8-1/2" (21.59 cm)
- Width:** 17" (43.18 cm)
- Depth:** 10-3/16" (25.9 cm)
- Weight:** 20 lbs (9.1 kg)



Introduction

The WST LED is designed with the specifier in mind. The traditional, trapezoidal shape offers a soft, non-pixelated light source for end-user visual comfort. For emergency egress lighting, the WST LED offers six battery options, including remote. For additional code compliance and energy savings, there is also a Bi-level motion sensor option. With so many standard and optional features, three lumen packages, and high LPW, the WST LED is your "go to" luminaire for most any application.

A+ Capable options indicated by this color background.

Ordering Information

EXAMPLE: WST LED P1 40K VF MVOLT DBBTXD

WST LED	Performance Package	Color temperature	Distribution	Voltage	Mounting
WST LED	P1 1,500 Lumen package P2 3,000 Lumen package P3 6,000 Lumen package	27K 2700 K 30K 3000 K 40K 4000 K 50K 5000 K	VF Visual comfort forward throw VW Visual comfort wide	MVOLT ¹ 277 ² 120 ² 347 ² 208 ² 480 ² 240 ²	Shipped included (blank) Surface mounting bracket PBBW Premium surface-mounted back box ^{3,4} Shipped separately BBW Surface-mounted back box ³

Options	Finish (required)
NLTAIR2 PIR nLIGHT AIR Wireless enabled motion/ambient sensor for 8'-15' mounting heights ^{5,6,7}	DBBXD Dark bronze
NLTAIR2 PIRH nLIGHT AIR Wireless enabled motion/ambient sensor for 15'-30' mounting heights ^{5,6,7}	DBLXD Black
PE Photoelectric cell, button type ⁸	DNAXD Natural aluminum
PER NEMA twist-lock receptacle only (controls ordered separate) ⁹	DWHXD White
PER5 Five-wire receptacle only (controls ordered separate) ⁹	DSSXD Sandstone
PER7 Seven-wire receptacle only (controls ordered separate) ⁹	DBBTXD Textured dark bronze
PIR Motion/Ambient Light Sensor, 8-15' mounting height ^{5,6}	DBL BXD Textured black
PIR1FC3V Motion/ambient sensor, 8-15' mounting height, ambient sensor enabled at 1fc ^{5,6}	DNATXD Textured natural aluminum
PIRH 180° motion/ambient light sensor, 15-30' mounting height ^{5,6}	DWHGXD Textured white
PIRH1FC3V Motion/ambient sensor, 15-30' mounting height, ambient sensor enabled at 1fc ^{5,6}	DSSTXD Textured sandstone
SF Single fuse (120, 277, 347V) ²	
DF Double fuse (208, 240, 480V) ²	
DS Dual switching ¹⁰	
DMG 0-10V dimming extend out back of housing for external control (control ordered separate) ¹¹	
E7WC Emergency battery backup, CA Title 20 Noncompliant (cold, 7W) ^{7,12}	
E20WH Emergency battery pack 18W constant power, Certified in CA Title 20 MAEDBS ⁷	
E20WC Emergency battery pack -20°C 18W constant power, Certified in CA Title 20 MAEDBS ^{7,12}	
LCE Left side conduit entry ¹⁴	
RCE Right side conduit entry ¹⁴	
BAA Buy America(n) Act Compliant	
Shipped separately	
RBPW Retrofit back plate ³	
VG Vandal guard ¹⁵	
WG Wire guard ¹⁵	

See Accessories and Notes on next page.



COMMERCIAL OUTDOOR

1 Acuity Way • Decatur, GA 30035 • Phone: 800-705-SERV (7378) • www.lithonia.com
© 2011-2025 Acuity Brands Lighting, Inc. All rights reserved.

WST-LED
Rev. 07/08/25

Accessories

Ordered and shipped separately.

WSTVCPBBW DDBXD U	Premium Surface - mounted back box
WSBBW DDBTXD U	Surface - mounted back box
RBPW DDBXD U	Retrofit back plate
DLL127F 1.5 JU	Photocell - SSL twist-lock (120-277V) ¹⁵
DLL347F 1.5 CUL JU	Photocell - SSL twist-lock (347V) ¹⁵
DLL480F 1.5 CUL JU	Photocell - SSL twist-lock (480V) ¹⁵

NOTES

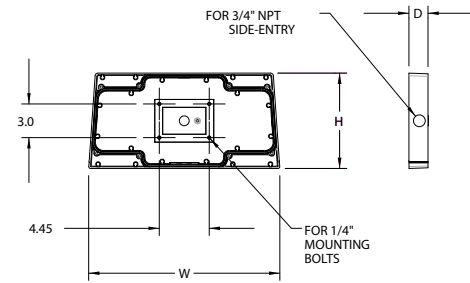
- MVOLT driver operates on any line voltage from 120-277V (50/60 Hz).
- Single fuse (SF) requires 120V, 277V or 347V. Double fuse (DF) requires 208V, 240V or 480V.
- Also available as a separate accessory; see accessories information.
- Top conduit entry standard.
- Not available with VG or WG. See PER Table.
- Reference Motion Sensor table.
- Not available 347/480. E7WC or E23WHR, only available 120 or 277.
- Need to specify 120, 208, 240 or 277 voltage.
- Photocell ordered and shipped as a separate line item from Acuity Brands Controls. Shorting Cap included.
- Not available with Emergency options, PE or PER options.
- DMG option not available with standalone or networked sensors/controls.
- Battery pack rated for -20° to 40°C.
- Not available with BBW.
- Must order with fixture; not an accessory.
- Requires luminaire to be specified with PER, PER5 or PER7 option. See PER Table.

Optional Back Box (PBBW)

Height: 8.49"
(21.56 cm)

Width: 17.01"
(43.21 cm)

Depth: 1.70"
(4.32 cm)

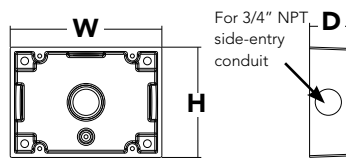


Optional Back Box (BBW)

Height: 4"
(10.2 cm)

Width: 5-1/2"
(14.0 cm)

Depth: 1-1/2"
(3.8 cm)



Emergency Battery Operation

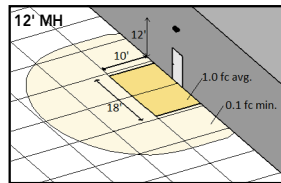
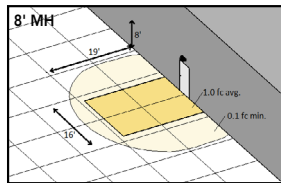
The emergency battery backup is integral to the luminaire — no external housing required! This design provides reliable emergency operation while maintaining the aesthetics of the product.

All emergency backup configurations include an independent secondary driver with an integral relay to immediately detect AC power loss, meeting interpretations of [NFPA 70/NEC 2008 - 700.16](#)

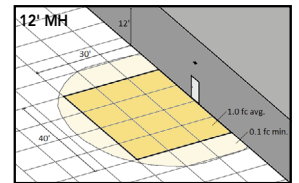
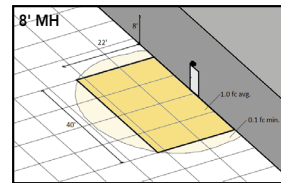
The emergency battery will power the luminaire for a minimum duration of 90 minutes (maximum duration of three hours) from the time supply power is lost, per [International Building Code Section 1006](#) and [NFPA 101 Life Safety Code Section 7.9](#), provided luminaires are mounted at an appropriate height and illuminate an open space with no major obstructions.

The examples below show illuminance of 1 fc average and 0.1 fc minimum of the P1 power package and VF distribution product in emergency mode.

10' x 10' Gridlines
8' and 12' Mounting Height



WST LED P1 27K VF MVOLT E7WH



WST LED P2 40K VF MVOLT E20WH

Performance Data

Lumen Ambient Temperature (LAT) Multipliers

Use these factors to determine relative lumen output for average ambient temperatures from 0-40°C (32-104°F).

Ambient		Lumen Multiplier
0°C	32°F	1.03
10°C	50°F	1.02
20°C	68°F	1.01
25°C	77°F	1.00
30°C	86°F	0.99
40°C	104°F	0.98

Electrical Load

Performance package	System Watts	Current (A)					
		120	208	240	277	347	480
P1	11	0.1	0.06	0.05	0.04	---	---
	14	---	---	---	---	0.04	0.03
P1 DS	14	0.12	0.07	0.06	0.06	---	---
	P2	25	0.21	0.13	0.11	0.1	---
30		---	---	---	---	0.09	0.06
P2 DS	25	0.21	0.13	0.11	0.1	---	---
	P3	50	0.42	0.24	0.21	0.19	---
56		---	---	---	---	0.16	0.12
P3 DS	52	0.43	0.26	0.23	0.21	---	---

Projected LED Lumen Maintenance

Values calculated according to IESNA TM-21-11 methodology and valid up to 40°C.

Operating Hours	0	25,000	50,000	100,000
Lumen Maintenance Factor	1.0	>0.95	>0.92	>0.87

Motion Sensor Default Settings

Option	Dimmed State	High Level (when triggered)	Photocell Operation	Ramp-up Time	Dwell Time	Ramp-down Time
*PIR or PIRH	3V (37%) Output	10V (100%) Output	Enabled @ 5FC	3 sec	5 min	5 min
PIR1FC3V or PIRH1FC3V	3V (37%) Output	10V (100%) Output	Enabled @ 1FC	3 sec	5 min	5 min

*for use with site wide Dusk to Dawn control

PER Table

Control	PER (3 wire)	PER5 (5 wire)		PER7 (7 wire)		
			Wire 4/Wire5		Wire 4/Wire5	Wire 6/Wire7
Photocontrol Only (On/Off)	✓	⚠	Wired to dimming leads on driver	⚠	Wired to dimming leads on driver	Wires Capped inside fixture
ROAM	⊘	✓	Wired to dimming leads on driver	⚠	Wired to dimming leads on driver	Wires Capped inside fixture
ROAM with Motion	⊘	⚠	Wired to dimming leads on driver	⚠	Wired to dimming leads on driver	Wires Capped inside fixture
Futureproof*	⊘	⚠	Wired to dimming leads on driver	✓	Wired to dimming leads on driver	Wires Capped inside fixture
Futureproof* with Motion	⊘	⚠	Wired to dimming leads on driver	✓	Wired to dimming leads on driver	Wires Capped inside fixture

-  Recommended
-  Will not work
-  Alternate

*Futureproof means: Ability to change controls in the future.

Lumen Output

Lumen values are from photometric tests performed in accordance with IESNA LM-79-08. Data is considered to be representative of the configurations shown, within the tolerances allowed by Lighting Facts.

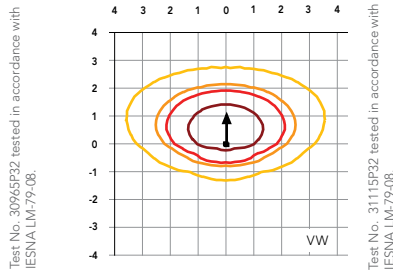
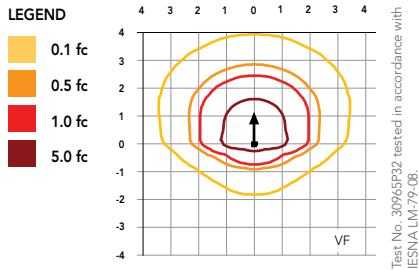
Performance Package	System Watts (MVOLT*)	Dist. Type	27K (2700K, 70 CRI)					30K (3000K, 70 CRI)					40K (4000K, 70 CRI)					50K (5000K, 70 CRI)				
			Lumens	B	U	G	LPW	Lumens	B	U	G	LPW	Lumens	B	U	G	LPW	Lumens	B	U	G	LPW
P1	12W	VF	1,494	0	0	0	125	1,529	0	0	0	127	1,639	0	0	0	137	1,639	0	0	0	137
			VW	1,513	0	0	0	126	1,548	0	0	0	129	1,659	0	0	0	138	1,660	0	0	0
P2	25W	VF	3,163	1	0	1	127	3,237	1	0	1	129	3,469	1	0	1	139	3,468	1	0	1	139
			VW	3,201	1	0	0	128	3,276	1	0	0	131	3,512	1	0	0	140	3,512	1	0	0
P3	50W	VF	6,025	1	0	1	121	6,165	1	0	1	123	6,609	1	0	1	132	6,607	1	0	1	132
			VW	6,098	1	0	1	122	6,240	1	0	1	125	6,689	1	0	1	134	6,691	1	0	1



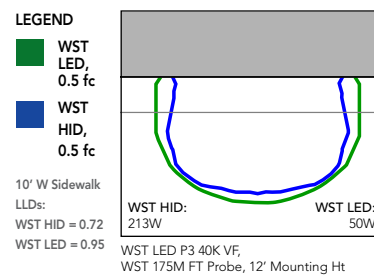
Photometric Diagrams

To see complete photometric reports or download .ies files for this product, visit Lithonia Lighting's [WST LED homepage](#).

Isofootcandle plots for the WST LED P3 40K VF and VW. Distances are in units of mounting height (10').



Distribution overlay comparison to 175W metal halide.



FEATURES & SPECIFICATIONS

INTENDED USE

The classic architectural shape of the WST LED was designed for applications such as hospitals, schools, malls, restaurants, and commercial buildings. The long life LEDs and driver make this luminaire nearly maintenance-free.

CONSTRUCTION

The single-piece die-cast aluminum housing integrates secondary heat sinks to optimize thermal transfer from the internal light engine heat sinks and promote long life. The driver is mounted in direct contact with the casting for a low operating temperature and long life. The die-cast door frame is fully gasketed with a one-piece solid silicone gasket to keep out moisture and dust, providing an IP65 rating for the luminaire.

FINISH

Exterior parts are protected by a zinc-infused Super Durable TGIC thermoset powder coat finish that provides superior resistance to corrosion and weathering. A tightly controlled multi-stage process ensures a minimum 3 mils thickness for a finish that can withstand extreme climate changes without cracking or peeling. Standard Super Durable colors include dark bronze, black, natural aluminum, sandstone and white. Available in textured and non-textured finishes.

OPTICS

Well crafted reflector optics allow the light engine to be recessed within the luminaire, providing visual comfort, superior distribution, uniformity, and spacing in wall-mount applications. The WST LED has zero uplight and qualifies as a Nighttime Friendly™ product, meaning it is consistent with the LEED® and Green Globes™ criteria for eliminating wasteful uplight.

ELECTRICAL

Light engine(s) consist of 98 high-efficacy LEDs mounted to a metal core circuit board and integral aluminum heat sinks to maximize heat dissipation and promote long life (100,000 hrs at 40°C, L87). Class 2 electronic driver has a power factor >90%, THD <20%. Easily-serviceable surge protection device meets a minimum Category B (per ANSI/IEEE C62.41.2).

INSTALLATION

A universal mounting plate with integral mounting support arms allows the fixture to hinge down for easy access while making wiring connections.

LISTINGS

CSA certified to U.S. and Canadian standards. Luminaire is IP65 rated. PIR and back box options are rated for wet location. Rated for -30°C to 40°C ambient.

GOVERNMENT PROCUREMENT

BAA – Buy America(n) Act: Product qualifies as a domestic end product under the Buy American Act as implemented in the FAR and DFARS. Product also qualifies as manufactured in the United States under DOT Buy America regulations.

BABA – Build America Buy America: Product qualifies as produced in the United States under the definitions of the Build America, Buy America Act.

Please refer to www.acuitybrands.com/buy-american for additional information.

WARRANTY

5-year limited warranty. This is the only warranty provided and no other statements in this specification sheet create any warranty of any kind. All other express and implied warranties are disclaimed. Complete warranty terms located at: www.acuitybrands.com/support/warranty/terms-and-conditions

Note: Actual performance may differ as a result of end-user environment and application. All values are design or typical values, measured under laboratory conditions at 25 °C. Specifications subject to change without notice.

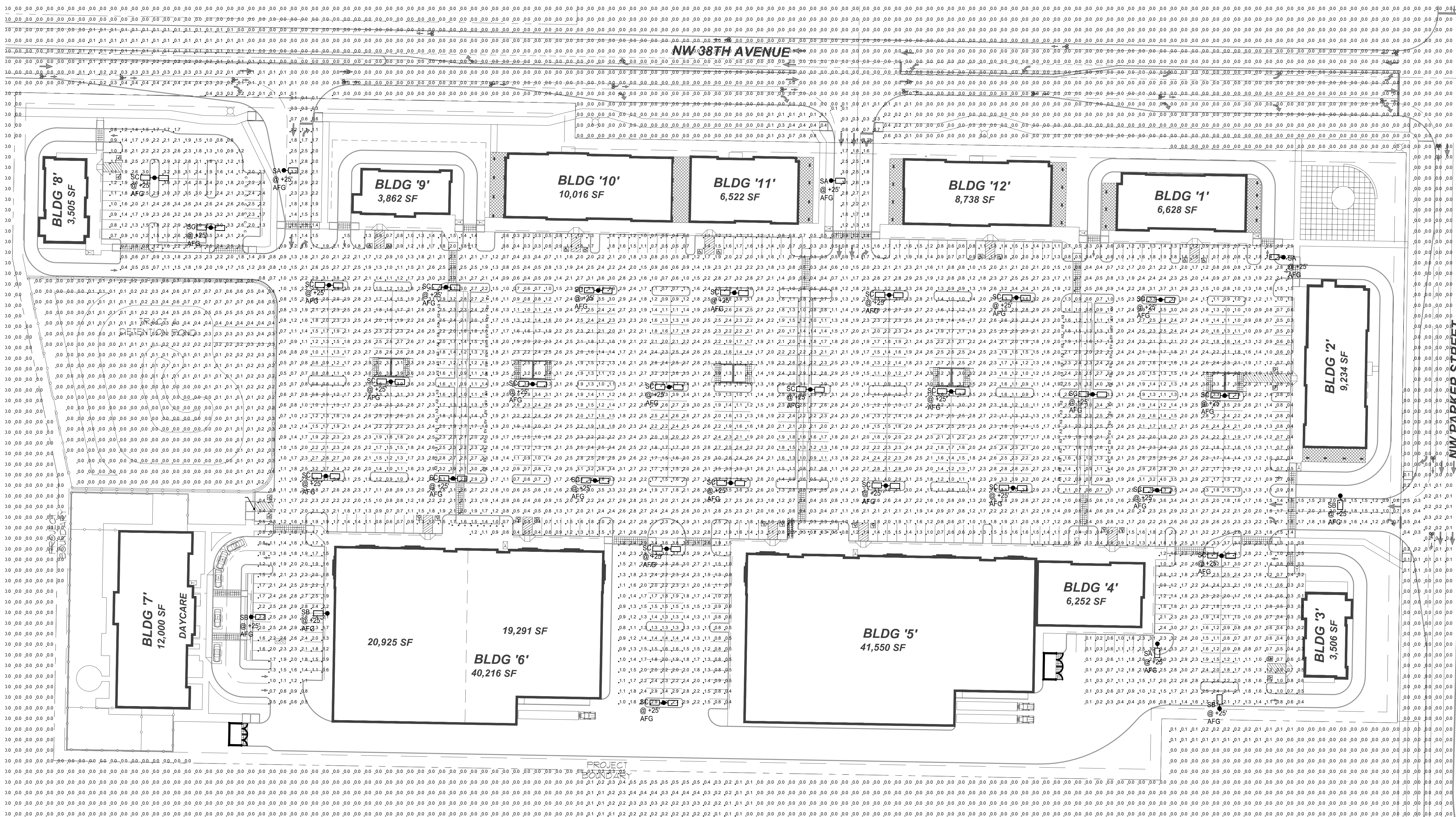


COMMERCIAL OUTDOOR

1 Acuity Way • Decatur, GA 30035 • Phone: 800-705-SERV (7378) • www.lithonia.com

© 2011-2025 Acuity Brands Lighting, Inc. All rights reserved.

WST-LED
Rev. 07/08/25



1 SITE PLAN - ELECTRICAL
1"=50'-0"

Symbol	Label	QTY	Manufacturer	Catalog	Description	Lamp Output	LLF	Input Power
SA	SA	4	Lithonia Lighting	DSXO LED P6 35K 80CRI T5LG	D-Series Size 0 Area Luminaire P6 Performance Package 3500K CCT 80 CRI Type 5 Low Glare Rating	16142	0.9	137
SB	SB	4	Lithonia Lighting	DSXO LED P6 35K 80CRI T2M HS	D-Series Size 0 Area Luminaire P6 Performance Package 3500K CCT 80 CRI Type 2 Medium Househide Shield	12709	0.9	137
SC	SC	26	Lithonia Lighting	DSXO LED P6 35K 80CRI T2M	D-Series Size 0 Area Luminaire P6 Performance Package 3500K CCT 80 CRI Type 2 Medium	12709	0.9	274

GENERAL NOTES:
1. BUILDING LIGHTING WILL BE INSTALLED TO INCREASE LIGHT LEVELS IN ADA PARKING SPACES TO MORE THAN 1.0 FOOT CANDLES.

REVISIONS:

JOB NO.:
DATE:
DESIGNED BY:
DRAWN BY:
CHECKED BY:

PRELIMINARY

6915 S MACADAM AVE SUITE 200
PORTLAND, OREGON 97219
CONTACT: DANIEL DEHNHARTER
PHONE: (503) 892-1188
engineering@mke-inc.com
Since 1979



APPLICANT:
APOLLO LANDING, LLC
16420 SE MCGILLIVRAY BLVD., SUITE #103-197
VANCOUVER, WA 98683
PHONE: (509) 939-5068
FAX UNAVAILABLE
david.apc@mac.com

OWNERS:
LITTLE TRAIL RESORT, LLC AND KATES HEATH LLC ET AL
16420 SE MCGILLIVRAY BLVD., SUITE #103-197
VANCOUVER, WA 98683
PHONE: (509) 939-5068
FAX UNAVAILABLE
david.apc@mac.com

CONTACT:
ATTN: GAYLE GERKE
MACKAY SPOSITO, INC.
16406 SE MILL PLAIN BLVD #100
VANCOUVER, WA 98683
PHONE: (360) 695-3411
ggerke@mackaysposito.com

EL1.0


REVISIONS:

JOB NO.:
DATE:
DESIGNED BY:
DRAWN BY:
CHECKED BY:

PRELIMINARY

EL1.1

D-Series Size 0 LED Area Luminaire



Specifications

EPA: 0.44 ft² (0.04 m²)
Length: 26.18" (66.5 cm)
Width: 14.06" (35.7 cm)
Height H1: 2.26" (5.7 cm)
Height H2: 7.46" (18.9 cm)
Weight: 23 lbs (10.4 kg)

Ordering Information

EXAMPLE: D5X0 LED P6 40K 70CRI T3M MVOLT SPA NLTAR2 PIRHN DBXBD

Series	LEDs	Color Temperature	Color Rendering Index	Distribution	Voltage	Mounting
DSX0 LED	P1	300K	70CRI	T15	120V-277V	SPA Square pole mounting (R8 drilling, 3.5" min. SD pole)
	P2	400K	70CRI	T15	120V-277V	
	P3	500K	70CRI	T15	120V-277V	
DSX0 LED	P4	27K	80CRI	T3M	120V-277V	RPA Round pole mounting (R8 drilling, 3" min. RND pole)
	P10	300K	80CRI	T4M	120V-277V	
	P11	300K	80CRI	T4M	120V-277V	

Control options

Shipped installed

Shipped separately

Finish options

DSX0 LED Rev. 04/29/25 Page 1 of 9

Ordering Information

Accessories

BL10P1 L80 Photo: 10, back-hat (120-277V)¹
BL14P1 L16 L80 Photo: 10, back-hat (277V)¹
BL14M1 L16 L80 Photo: 10, back-hat (120V)¹
DSX0P1 SR Starting cap
DSX0P1 P1 Photo: 10, back-hat (120-277V)¹
DSX0P1 P2 Photo: 10, back-hat (277V)¹
DSX0P1 P3 Photo: 10, back-hat (120V)¹
DSX0P1 P4 Photo: 10, back-hat (120-277V)¹
DSX0P1 P10 Photo: 10, back-hat (120-277V)¹
DSX0P1 P11 Photo: 10, back-hat (120-277V)¹
DSX0P1 P12 Photo: 10, back-hat (120-277V)¹
DSX0P1 P13 Photo: 10, back-hat (120-277V)¹
DSX0P1 P14 Photo: 10, back-hat (120-277V)¹
DSX0P1 P15 Photo: 10, back-hat (120-277V)¹
DSX0P1 P16 Photo: 10, back-hat (120-277V)¹
DSX0P1 P17 Photo: 10, back-hat (120-277V)¹
DSX0P1 P18 Photo: 10, back-hat (120-277V)¹
DSX0P1 P19 Photo: 10, back-hat (120-277V)¹
DSX0P1 P20 Photo: 10, back-hat (120-277V)¹
DSX0P1 P21 Photo: 10, back-hat (120-277V)¹
DSX0P1 P22 Photo: 10, back-hat (120-277V)¹
DSX0P1 P23 Photo: 10, back-hat (120-277V)¹
DSX0P1 P24 Photo: 10, back-hat (120-277V)¹

Shield Accessories

External Glare Shield (EGSR)
House Side Shield (HS)

Drilling

HANDHOLE ORIENTATION
(from top of pole)

Template #8
1.750" to 2.700" for other poles

Tenon Mounting Slipfitter

Tenon O.D.	Mounting	Single Unit	2 @ 180	2 @ 90	3 @ 120	4 @ 90
2.38"	RPA	AS3-5190	AS3-5280	AS3-5290	AS3-5390	AS3-5490
2.78"	RPA	AS125-190	AS125-280	AS125-290	AS125-390	AS125-490
4"	RPA	AS125-190	AS125-280	AS125-290	AS125-390	AS125-490

DSX0 Area Luminaire - EPA

Mounting Type	Single Unit	2 @ 180	2 @ 90	3 @ 120	4 @ 90
DSX0 with SPA	0.44	0.88	0.96	1.18	1.16
DSX0 with SPA, SPAN	0.51	1.02	1.06	1.26	1.29
DSX0 with RPA, RNAS	0.51	1.02	1.06	1.26	1.29
DSX0 with MA	0.64	1.28	1.24	1.67	1.70

LITHONIA LIGHTING
COMMERCIAL OUTDOOR

One Lithonia Way • Conyers, Georgia 30012 • Phone: 1-800-705-SERV (7378) • www.lithonia.com
© 2011-2025 Acuity Brands Lighting, Inc. All rights reserved.

DSX0 LED Rev. 04/29/25 Page 2 of 9

Photometric Diagrams

To see complete photometric reports or download .ies files for this product, visit Lithonia Lighting's homepage.

Isocandela plots for the DSX0 LED P1 40K 70CRI. Distances are in units of mounting height (D0).

LEGEND
0.4 ft
0.5 ft
1.0 ft



LITHONIA LIGHTING
COMMERCIAL OUTDOOR

One Lithonia Way • Conyers, Georgia 30012 • Phone: 1-800-705-SERV (7378) • www.lithonia.com
© 2011-2025 Acuity Brands Lighting, Inc. All rights reserved.

DSX0 LED Rev. 04/29/25 Page 3 of 9

6915 S MACADAM AVE
SUITE 200
PORTLAND, OREGON 97219
CONTACT: DANIEL DORNBERGER
PHONE: (503) 892-1188
engineering@enke-inc.com
Since 1979



APPLICANT:
APOLLO LANDING, LLC
16420 SE MCGILLIVRAY BLVD.,
SUITE #103-197
VANCOUVER, WA 98083
PHONE: (509) 938-5068
FAX UNAVAILABLE
david.apo@mac.com

OWNERS:
LITTLE TRAIL RESORT, LLC AND
KATES HEATH LLC ET AL
16420 SE MCGILLIVRAY BLVD.,
SUITE #103-197
VANCOUVER, WA 98083
PHONE: (509) 938-5068
FAX UNAVAILABLE
david.apo@mac.com

CONTACT:
ATTN: GAYLE GERKE
MACKAY SPOSITO, INC.
16405 SE MILL PLAIN BLVD #100
VANCOUVER, WA 98083
PHONE: (360) 695-3411
ggerke@mackaysposito.com