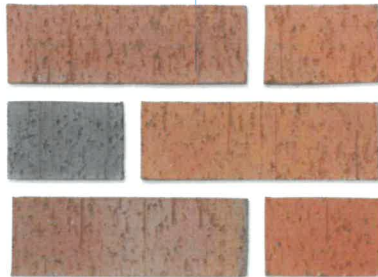


PARKER VILLAGE

NW 38TH & NW PARKER STREET
CAMAS, WASHINGTON
COLORS & MATERIALS

BRICK VENEER 1 :



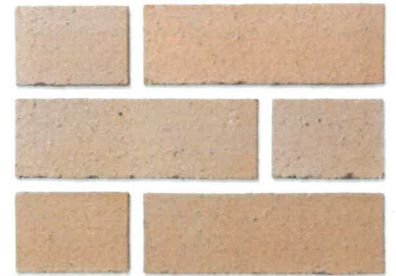
FINISH STYLE: MISSION
COLOR: 'AUTUMN BLEND'

BRICK VENEER 2 :



FINISH STYLE: MISSION
COLOR: 'CHESTNUT'

BRICK VENEER 3 :



FINISH STYLE: MISSION
COLOR: 'TAN TERRA'

BRICK VENEER 4 :



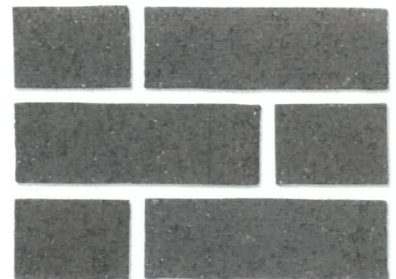
FINISH STYLE: MISSION
COLOR: 'VANCOUVER USED'

BRICK VENEER 5 :



FINISH STYLE: MISSION
COLOR: 'TEAL BROWN'

BRICK VENEER 6 :



FINISH STYLE: MISSION
COLOR: 'MAUNA LOA'

SCHMIDT ARCHITECTS, P.C.

16101 SW 72ND AVENUE
SUITE 135
PORTLAND, OR 97224
(503) 220-8517
www.schmidtarchitectspc.com

MB 1
2025-06-10

PROJECT NUMBER: 2025-101

PARKER VILLAGE

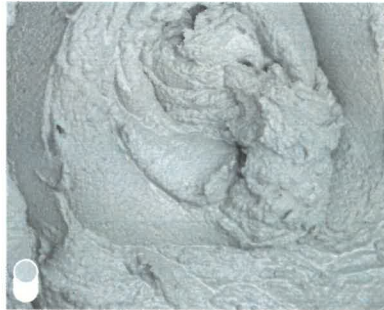
**NW 38TH & NW PARKER STREET
CAMAS, WASHINGTON
COLORS & MATERIALS**

CMU VENEER 1 :



**FINISH: GROUND FACE
COLOR: 'KHAKI ASHLAR'**

MORTAR 1 :



**MORTAR MIX
COLOR: 'NATURAL GRAY'**

SCHMIDT ARCHITECTS, P.C.

**16101 SW 72ND AVENUE
SUITE 135
PORTLAND, OR 97224
(503) 220-8517
www.schmidtarchitectspc.com**

**MB 1
2025-06-10**

PROJECT NUMBER: 2025-101

PARKER VILLAGE

NW 38TH & NW PARKER STREET
CAMAS, WASHINGTON
COLORS & MATERIALS

CULTURED STONE 1 :



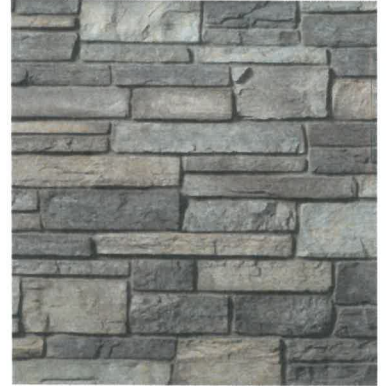
COUNTY LEDGESTONE
COLOR: 'BUCKS COUNTY'

CULTURED STONE 2 :



COUNTY LEDGESTONE
COLOR: 'CHARDONNAY'

CULTURED STONE 3 :



COUNTY LEDGESTONE
COLOR: 'GRAND MESA'

CULTURED STONE 4 :



COUNTY LEDGESTONE
COLOR: 'SEVILLA'

CULTURED STONE 5 :



COUNTY LIMESTONE
COLOR: 'SAN MARINO'

CULTURED STONE 6 :



WAINSCOT SNAPPED EDGE
COLOR: 'PEWTER'

SCHMIDT ARCHITECTS, P.C.

16101 SW 72ND AVENUE
SUITE 135
PORTLAND, OR 97224
(503) 220-8517
www.schmidtarchitectspc.com

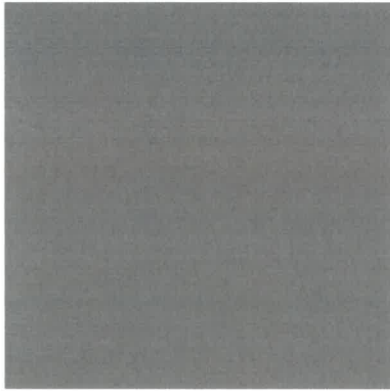
MB 1
2025-06-10

PROJECT NUMBER: 2025-101

PARKER VILLAGE

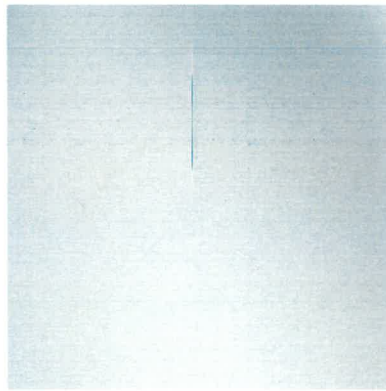
**NW 38TH & NW PARKER STREET
CAMAS, WASHINGTON
COLORS & MATERIALS**

PARAPET COPING & METAL ROOFING:



**FINISH: FACTORY
COLOR: 'AGED COPPER'**

STOREFRONT & BREAK METAL:



**FINISH: CLEAR
COLOR: 'ANODIZED' ALUMINUM'**

SCHMIDT ARCHITECTS, P.C.

**16101 SW 72ND AVENUE
SUITE 135
PORTLAND, OR 97224
(503) 220-8517
www.schmidtarchitectspc.com**

**MB 1
2025-06-10**

PROJECT NUMBER: 2025-101

PARKER VILLAGE

NW 38TH & NW PARKER STREET
CAMAS, WASHINGTON
COLORS & MATERIALS

STUCCO:
INTEGRAL COLOR



FINISH: SAND
COLOR: 'NOMADIC DESERT'
SW #6107

STUCCO:
INTEGRAL COLOR



FINISH: SAND
COLOR: 'DAPPER TAN'
SW #6144

STUCCO:
INTEGRAL COLOR



FINISH: SAND
COLOR: 'DUSTED TRUFFLE'
SW #9083

STUCCO:
INTEGRAL COLOR



FINISH: SAND
COLOR: 'RELAXED KHAKI'
SW #6149

STUCCO:
INTEGRAL COLOR



FINISH: SAND
COLOR: 'PRARIE GRASS'
SW #7546

SCHMIDT
ARCHITECTS, P.C.

16101 SW 72ND AVENUE
SUITE 135
PORTLAND, OR 97224
(503) 220-8517
www.schmidtarchitectspc.com

MB 1
2025-06-10

PROJECT NUMBER: 2025-101

PARKER VILLAGE

NW 38TH & NW PARKER STREET
CAMAS, WASHINGTON
COLORS & MATERIALS

PAINT COLOR PALETTE :



SHERWIN WILLIAMS
'DAPPER TAN'
#6144

PAINT COLOR PALETTE :



SHERWIN WILLIAMS
'MARSHMALLOW'
#7001

PAINT COLOR PALETTE :



SHERWIN WILLIAMS
'RELAXED KHAKI'
#6149

PAINT COLOR PALETTE :



SHERWIN WILLIAMS
'PENNYWISE'
#6349

PAINT COLOR PALETTE :



SHERWIN WILLIAMS
'SPICED CIDER'
#7702

PAINT COLOR PALETTE :



SHERWIN WILLIAMS
'THATCH BROWN'
#6145

SCHMIDT ARCHITECTS, P.C.

16101 SW 72ND AVENUE
SUITE 135
PORTLAND, OR 97224
(503) 220-8517
www.schmidtarchitectspc.com

MB 1
2025-06-10

PROJECT NUMBER: 2025-101

PARKER VILLAGE

NW 38TH & NW PARKER STREET
CAMAS, WASHINGTON
COLORS & MATERIALS

PAINT COLOR PALETTE :



SHERWIN WILLIAMS
'PORTOBELLO'
#6102

PAINT COLOR PALETTE :



SHERWIN WILLIAMS
'WHEAT PENNY'
#7705

PAINT COLOR PALETTE :



SHERWIN WILLIAMS
'NOMADIC DESERT'
#6107

PAINT COLOR PALETTE :



SHERWIN WILLIAMS
'WEATHERED SHINGLE'
#2841

PAINT COLOR PALETTE :



SHERWIN WILLIAMS
'NUTHATCH'
#6088

PAINT COLOR PALETTE :



SHERWIN WILLIAMS
'RESORT TAN'
#7550

SCHMIDT ARCHITECTS, P.C.

16101 SW 72ND AVENUE
SUITE 135
PORTLAND, OR 97224
(503) 220-8517
www.schmidtarchitectspc.com

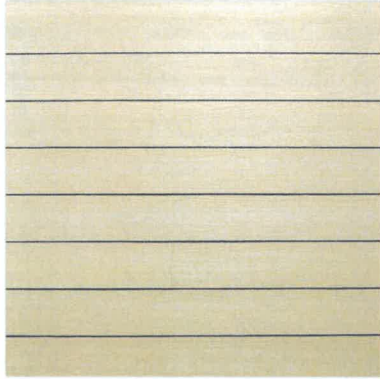
MB 1
2025-06-10

PROJECT NUMBER: 2025-101

PARKER VILLAGE

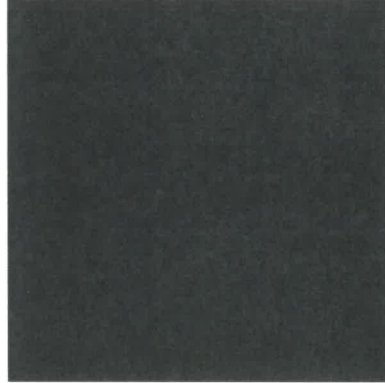
**NW 38TH & NW PARKER STREET
CAMAS, WASHINGTON
COLORS & MATERIALS**

LAP SIDING :



**FIBER CEMENT
PAINT TO MATCH
COLOR PALETTE**

AWNING FABRIC :



**'SUNBRELLA'
BLACK**

SCHMIDT ARCHITECTS, P.C.

**16101 SW 72ND AVENUE
SUITE 135
PORTLAND, OR 97224
(503) 220-8517
www.schmidtarchitectspc.com**

**MB 1
2025-06-10**

PROJECT NUMBER: 2025-101