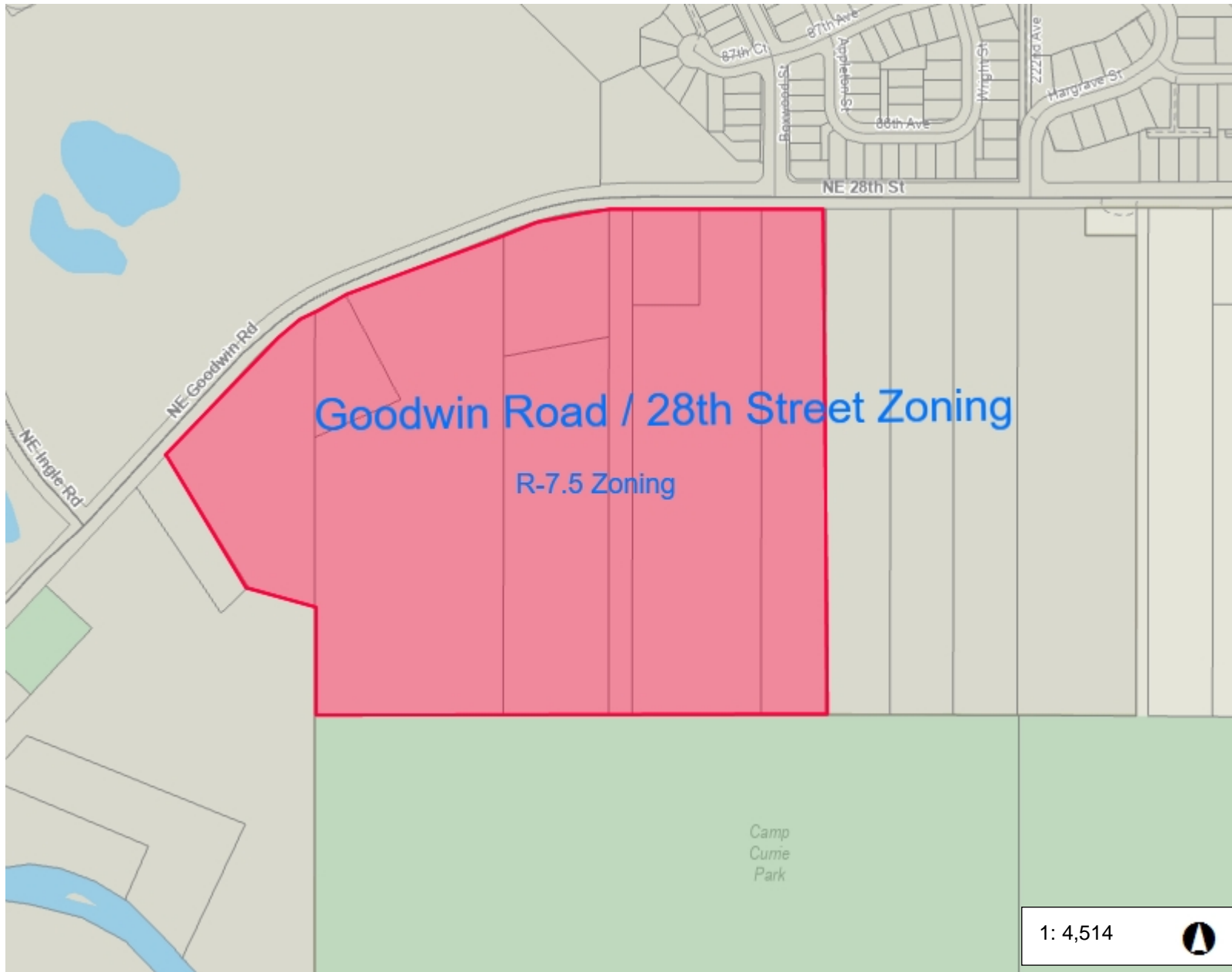




Goodwin Road / 28th Street Annexation



Legend

Taxlots

Notes:

Adoptive Zoning Map for Goodwin Road Annexation R-7.5

1: 4,514



752.3 0 376.17 752.3 Feet

WGS_1984_Web_Mercator_Auxiliary_Sphere
Clark County, WA. GIS - <http://gis.clark.wa.gov>

This map was generated by Clark County's "MapsOnline" website. Clark County does not warrant the accuracy, reliability or timeliness of any information on this map, and shall not be held liable for losses caused by using this information. Taxlot (i.e., parcel) boundaries cannot be used to determine the location of property lines on the ground.