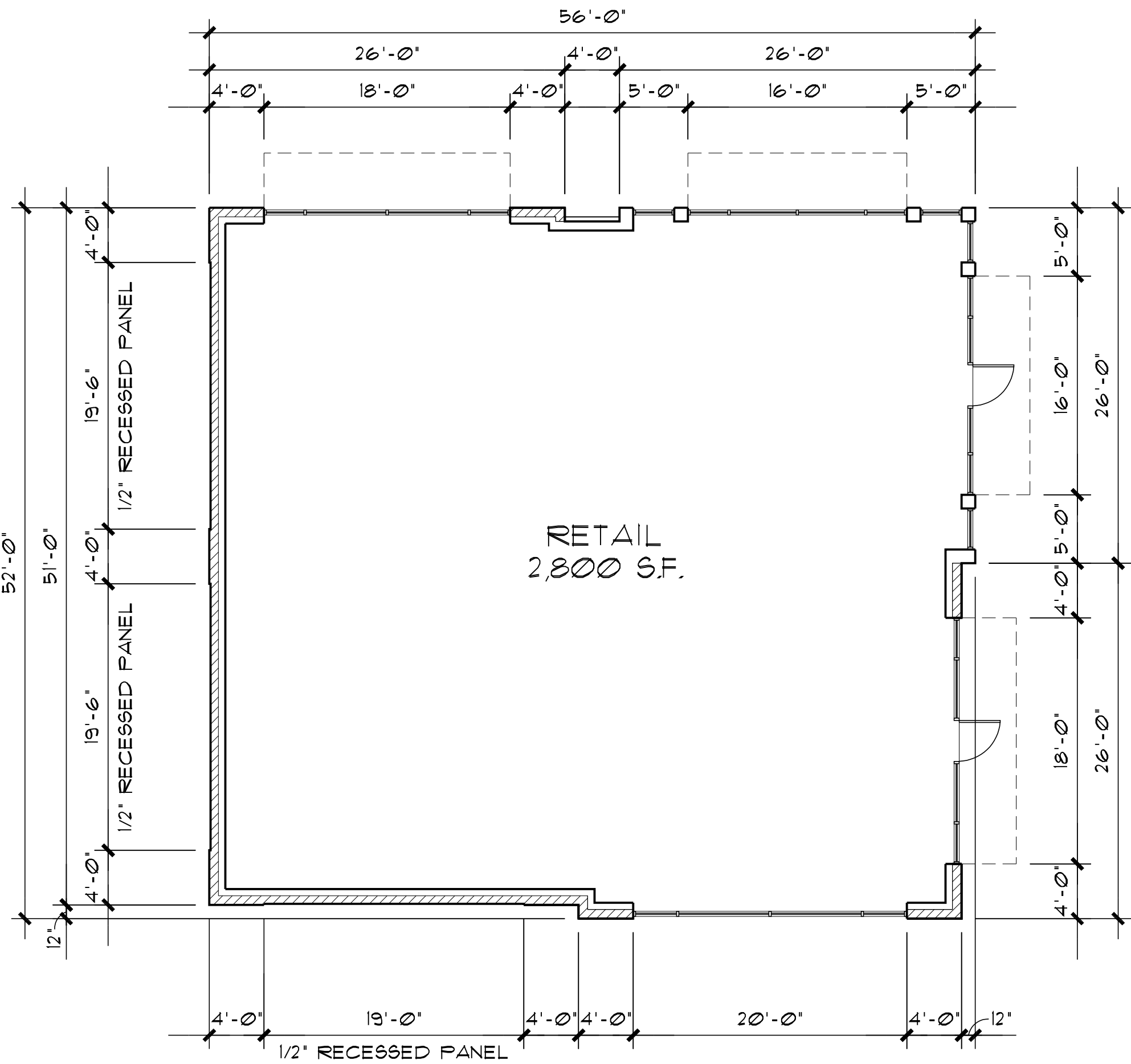


SCHMIDT
ARCHITECTS, P.C.

16101 SW 72ND AVENUE
SUITE 135
PORTLAND, OR 97224
(503) 220-8517
www.schmidtarchitectspc.com
AKA Tiland/Schmidt Architects, P.C.

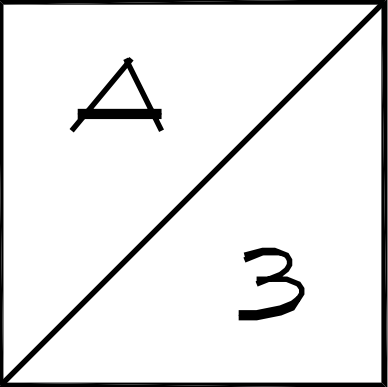
CAMAS STATION
N.W. 16th AVE. & N.W. BRADY RD.
CAMAS, WASHINGTON
MAJ DEVELOPMENT

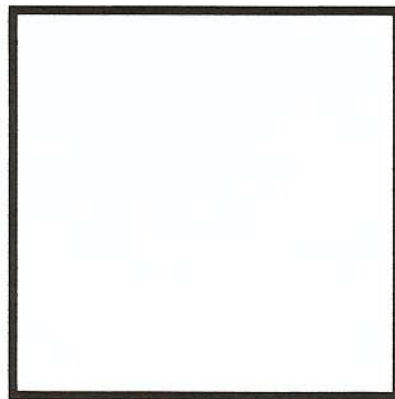


FLOOR PLAN (RETAIL)
1/8" = 1'-0"



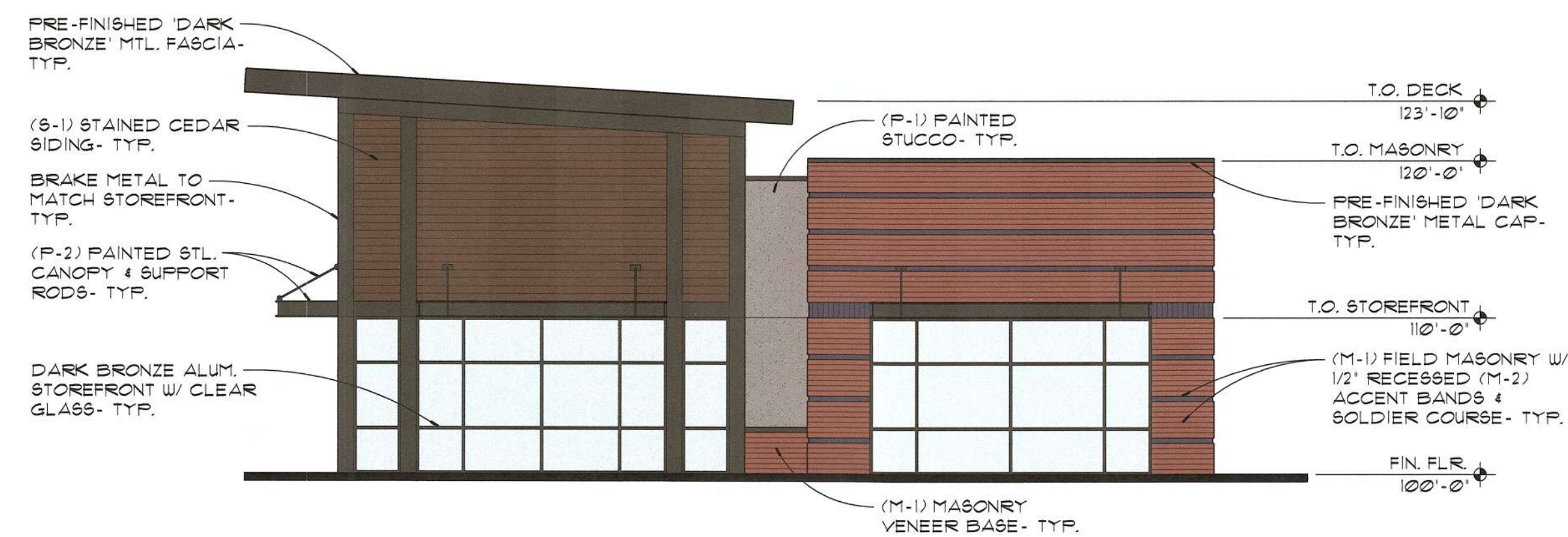
PROJECT NO.
2021-154
DATE : 02-03-2022
DRAWN BY : GAH
CHECKED BY : FMS
REVISIONS
2021-154-design plans.dwg





SCHMIDT
ARCHITECTS, P.C.
16101 SW 72ND AVENUE
SUITE 135
PORTLAND, OR 97224
(503) 220-8517
www.schmidtarchitectspc.com
AKA Tiland/Schmidt Architects, P.C.

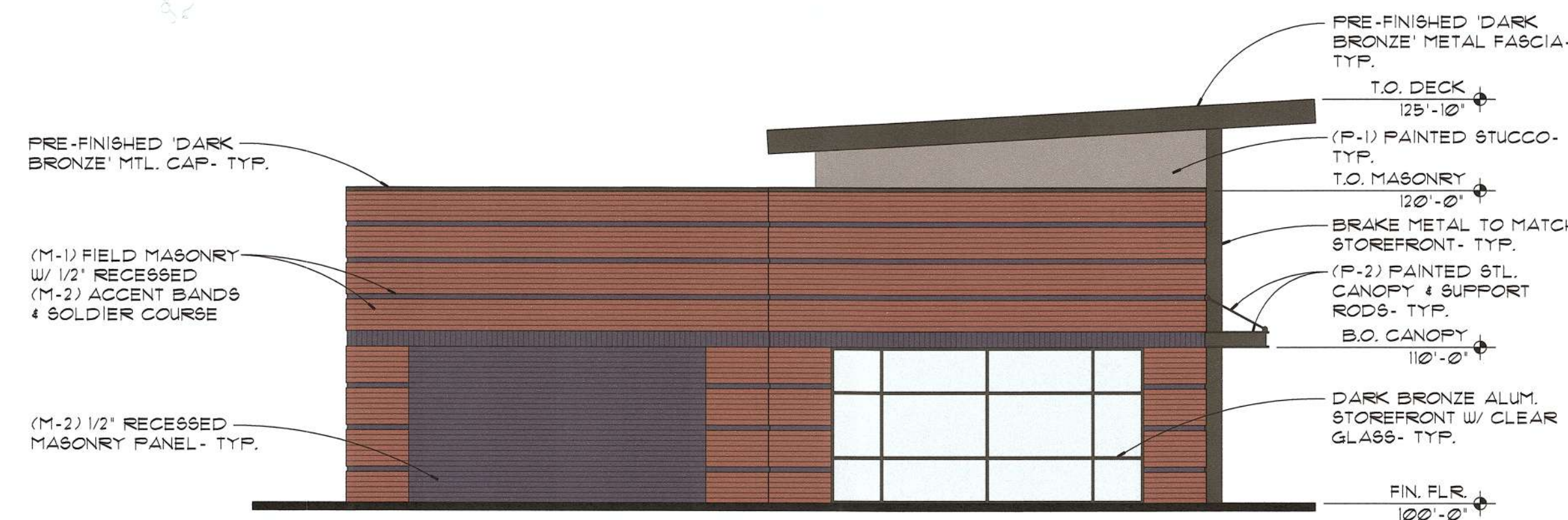
CAMAS STATION
N.W. 16th AVE. & N.W. BRADY RD.
CAMAS, WASHINGTON
MAJ DEVELOPMENT



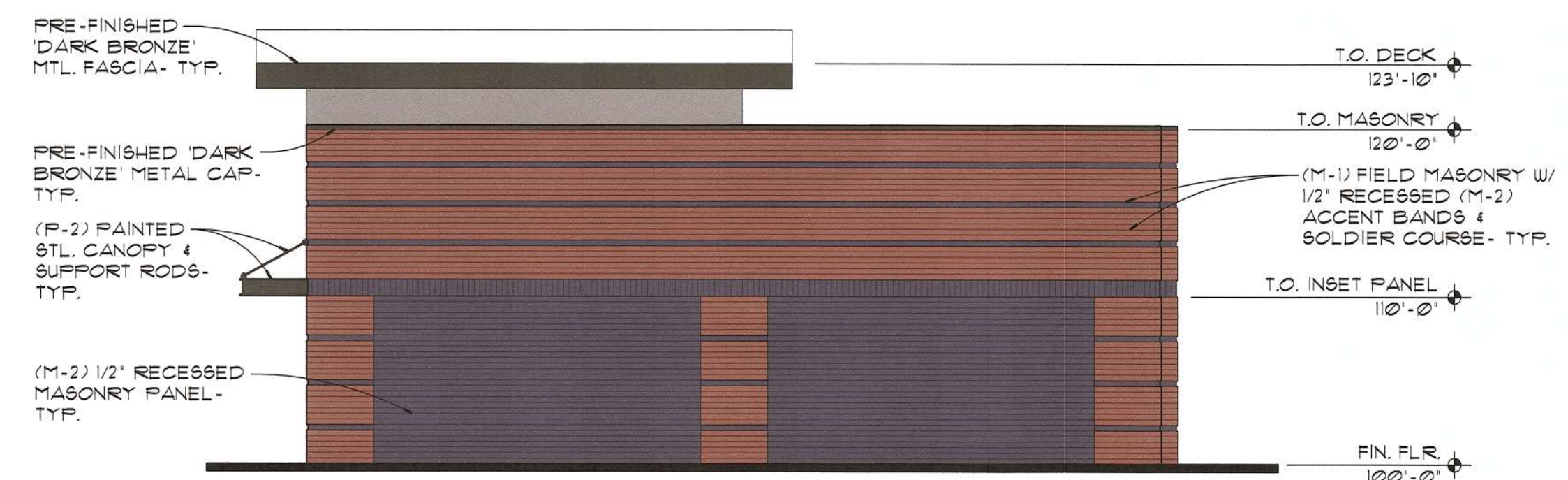
1 **NORTH ELEVATION (RETAIL)**
1/8" = 1'-0"



2 **EAST ELEVATION (RETAIL)**
1/8" = 1'-0"



3 **SOUTH ELEVATION (RETAIL)**
1/8" = 1'-0"



4 **WEST ELEVATION (RETAIL)**
1/8" = 1'-0"

MATERIALS / COLOR LEGEND				
MARK	MATERIAL	MANUFACTURER	DESCRIPTION/ COLOR	NOTES
P-1	PAINT	SHERWIN WILLIAMS	#1046 'ANONYMOUS'	STUCCO
P-2	PAINT	SHERWIN WILLIAMS	#6991 'BLACK MAGIC'	CANOPIES
M-1	4" HI BRICK	MUTUAL MATERIALS	INCA	FIELD
M-2	4" HI BRICK	MUTUAL MATERIALS	EBONY	SOLDIER & ACCENT COURSE
S-1	STAIN	OLYMPIC	#113 'OXFORD BROWN'	6" SHIP LAPPED CEDAR SIDING/ SOFFIT

PROJECT NO.
2021-154
DATE :
02-03-2022
DRAWN BY :
GAH
CHECKED BY :
FMS
REVISIONS
2021-154-design plans.dwg

