



Stormwater NPDES Permit Phase II Updates 2024-2029

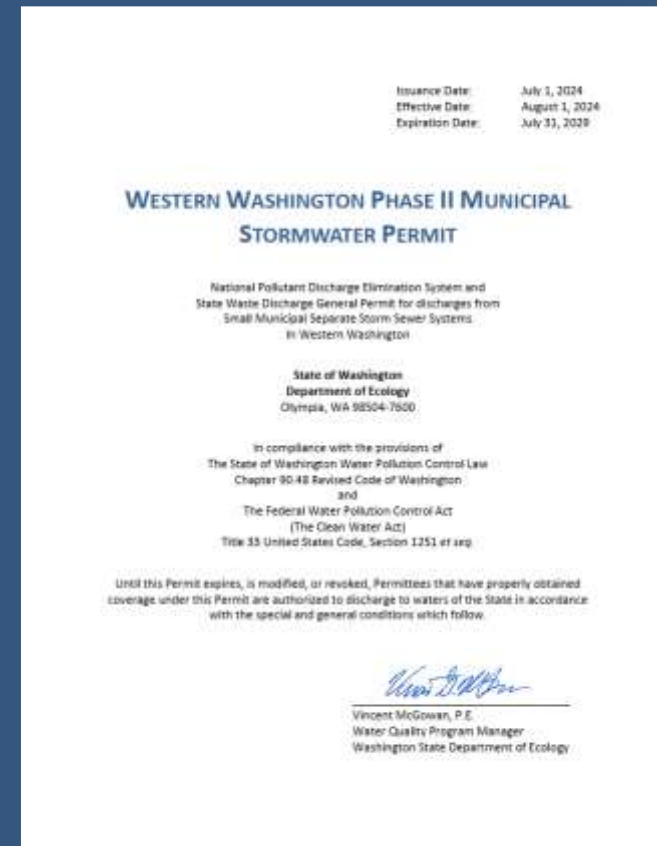
CITY COUNCIL WORKSHOP

FEBRUARY 3, 2025

Western Washington Phase II Municipal Stormwater Permit



- ▶ This is the fourth Permit term
- ▶ Issuance Date: July 1, 2024
- ▶ Effective Date: August 1, 2024
- ▶ Expiration Date: July 31, 2029



S5.C. Stormwater Management Program Components



- ▶ 1. Stormwater Planning
- ▶ 2. Public Education and Outreach
- ▶ 3. Public Involvement and Participation
- ▶ 4. MS4 Mapping and Documentation
- ▶ 5. Illicit Discharge Detection and Elimination
- ▶ 6. Controlling Runoff from New Development, Redevelopment, and Construction Sites
- ▶ **7. Stormwater Management for Existing Development**
- ▶ 8. Source Control Program for Existing Development
- ▶ 9. Operations and Maintenance

S5.C.1. Stormwater Planning



- ▶ Tree Canopy Goals and Policies
– December 31, 2028

- ▶ Stormwater Management
Action Plan (SMAP) – March 31,
2027



S5.C.2. Public Education and Outreach



- ▶ General Awareness
- ▶ Behavior Change
 - ▶ Social Marketing Campaign Development
 - ▶ Behavior Change Campaign
 - ▶ Behavior Change Campaign Evaluation



S5.C.3. Public Involvement and Participation



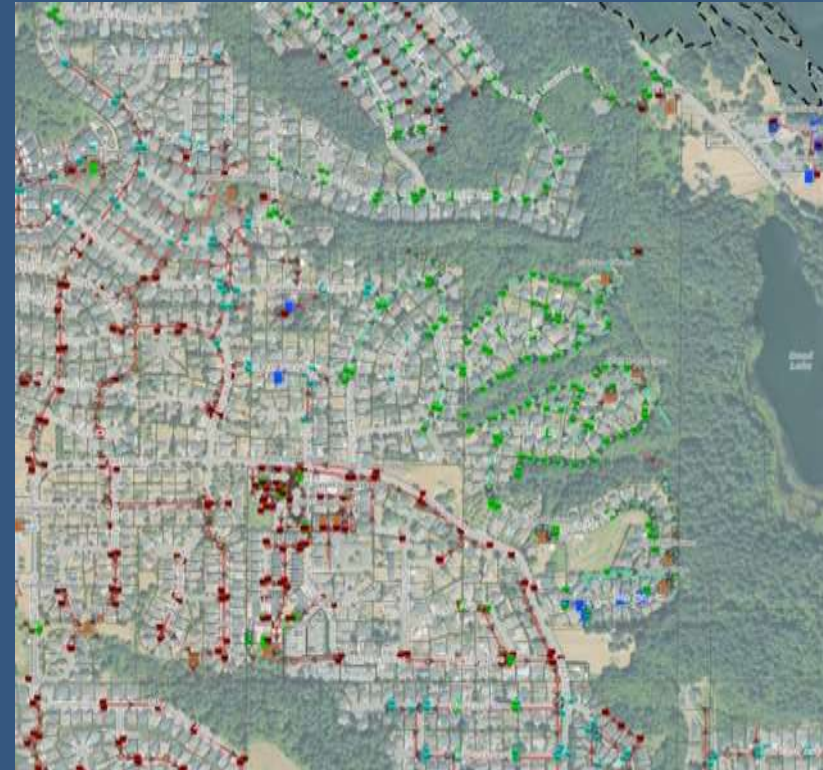
- ▶ Annually document specific public involvement and participation opportunities provided to overburdened communities and specifically, highly impacted communities
- ▶ Document methods used to identify overburdened communities



S5.C.4. MS4 Mapping and Documentation



- ▶ Outfall size and material, location
- ▶ Tree canopy on permittee owned parcels
- ▶ MS4 tributary basin to outfalls
- ▶ Map overburdened communities in relation to stormwater



S5.C.5. Illicit Discharge and Elimination (IDDE)



- ▶ Revise ordinance or regulatory mechanism - July 1, 2027
- ▶ PCB containing materials
- ▶ Post emergency clean up for firefighting activities



S5.C.6. Controlling Runoff from New Development, Redevelopment, and Construction Sites



- ▶ New plus replaced hard surface
- ▶ Updates to Minimum Requirements #1-#9



S5.C.7. Stormwater Management for Existing Development



- ▶ Appendix 12
- ▶ Strategic / Opportunistic stormwater investments
- ▶ Camas – 4.4 acres



S5.C.8. Source Control Program for Existing Development



- ▶ Continue to administer program
- ▶ Update ordinances or other enforceable documents as required



S5.C.9. Operations and Maintenance



- ▶ Update ordinance or other enforceable mechanism and enforcement procedures
- ▶ Minimize PCBs
- ▶ Municipal street sweeping



Permit Compliance and Support



- ▶ EPA/State mandated Permit compliance
- ▶ Supported wholly through user fees (e.g. rates)
- ▶ Camas Staffing
 - ▶ 8 FTE+/- (Permit Coordinator, Sr. Engineering Technician, 6 Maintenance Workers, Misc support from GIS, Managers, Admin, etc.)
 - ▶ Same staff also responsible for Lake Management and Dams
- ▶ Rate Revenue = \$2.1+/- mil/year
 - ▶ NPDES Permit Compliance including O&M
 - ▶ Dams and Lake Management
- ▶ Similar rate as neighboring communities

CAUTION!! – Revenue will need to increase to keep up with Permit Requirements...

Questions?



Brian Monnin – Stormwater Permit Coordinator
bmonnin@cityofcamas.us
360-817-7388