

Lacamas Watershed Council

www.lacamaswatershed.org

Board of Directors

- Judit Lorincz - Office Assistant/Clark County Public Works
- Tim Greseth - Executive Director/Oregon Wildlife Foundation
- Rodger Hauge - Retired Science Professor from Eastern Washington Univ.
- Vicky Wesling - Retired US Forest Service Fire Management
- Ty Cobb - IT Sales Manager/Zones
- Terris Becker - Data Analyst/Motive



Serving Our Community Since 2020

What Is the Lacamas Watershed Council (LWC)?

- Registered 501(c)(3) tax-exempt organization.
- Dedicated to investigating our watershed to improve lake water quality.
- Founded by community members concerned about water quality and its impact on public health.
- Supported by committed volunteers who are passionate about protecting our lakes.



What we do

Harmful Algal Bloom monitoring

- Year long monitoring of water quality measures.
Winter: once a month and Summer: weekly
- Monitoring three littoral sites:
Lacamas
Round lake
Fallen Leaf
- Sampling for Cyanobacteria at all sites



What we do

Midlake Sampling

- Water sampling in the lake at 5 sites
Along a NW to SE line with the center three sites
Sampled both deep and shallow.
- Water quality parameters are measured and Cyanobacteria samples are collected.
- In the process to tighten up data reliability by collaborating with the City of Camas and Clark County.



What we do

Continued yearly Aquatic Plant Survey

- During summer months
- Monitoring native and invasive plants
- Documenting change in plant life due to water quality improvement
- Reporting it to authorities to prevent future, new problems



What we do

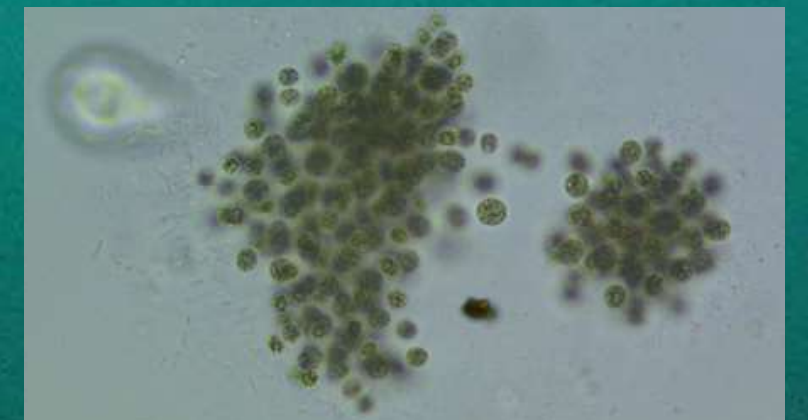
Watershed Investigation

- Acquired essential monitoring gear and trained personnel.
- Current field monitoring has focused primarily on Matley Creek.
- In the process of launching the Lacamas Creek Water Quality Assessment Initiative, including:
 - Macroinvertebrate surveys
 - Phosphate and other chemical testing
 - Baseline data collection
- This upstream work in the larger watershed is critical, as it is the most likely source of ongoing water quality issues.



Plans for 2026

- Maintain existing programs (build our dataset; help determine how different environmental changes are impacting water quality)
- Continue Watershed investigation upstream: This program will be expanded to four creeks and will include phosphate sampling.
- Continue fine tuning our programs to meet QAPP requirements.
- Phosphate monitoring implemented across all our programs- sampling design in process.
- Growing our volunteer base and recruiting Board of Directors to help with our programs.



Let's Work Together

- Improve Public Safety Messaging
- Formalize a Data Sharing Agreement
- Collaborate on Long-Term Water Quality Improvement
- Collaborate to Leverage Our Nonprofit Status to Maximize
- Funding Opportunities



Thank you



LWC website

<https://www.lacamaswatershed.org/>



LWC data

<https://data.lacamaswatershed.org/index.html>

Info@lacamaswatershed.org

