



2021 Comprehensive Plan Amendments

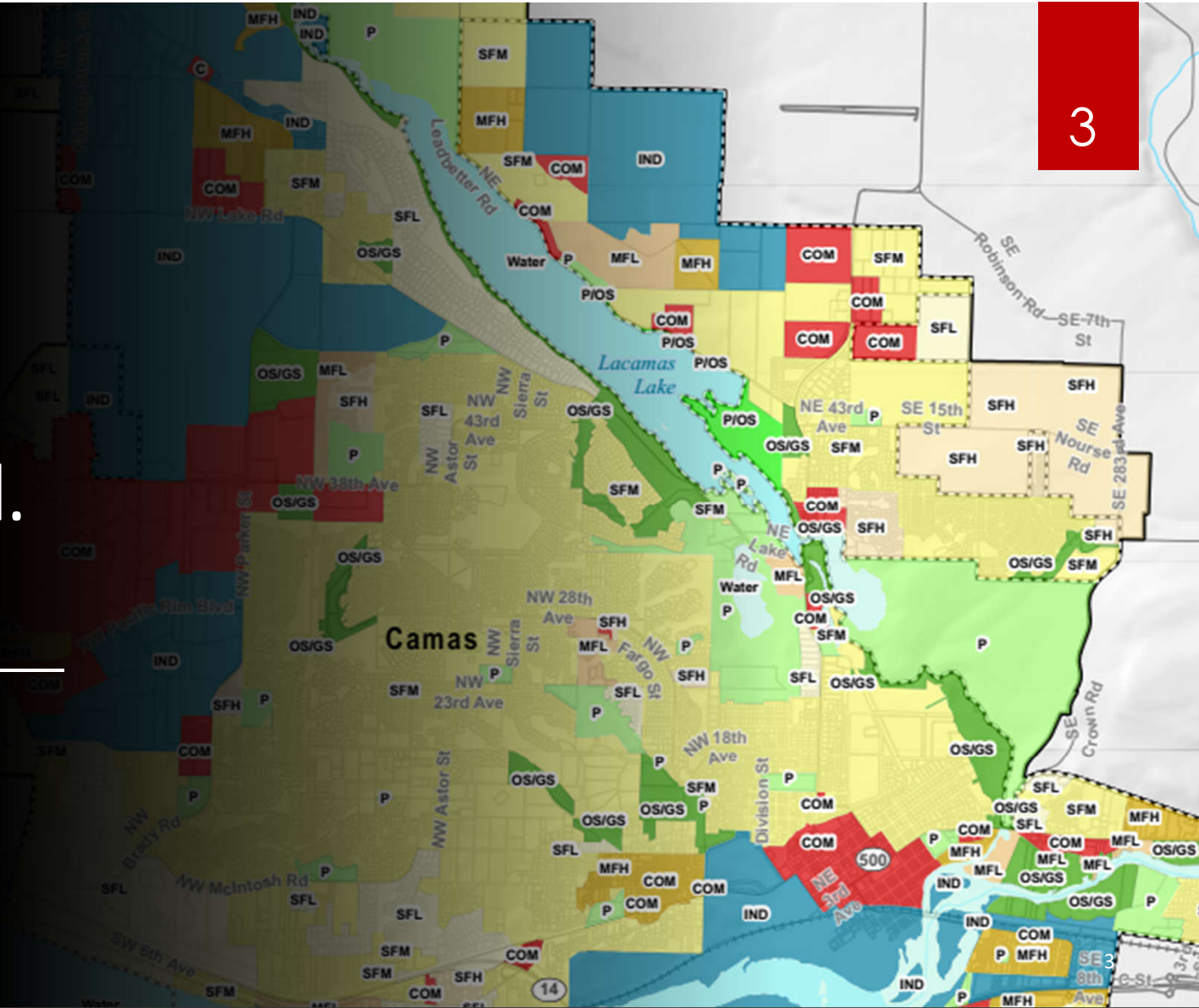
Planning Commission June 2021



Proposed
Amendments
4.8 acres

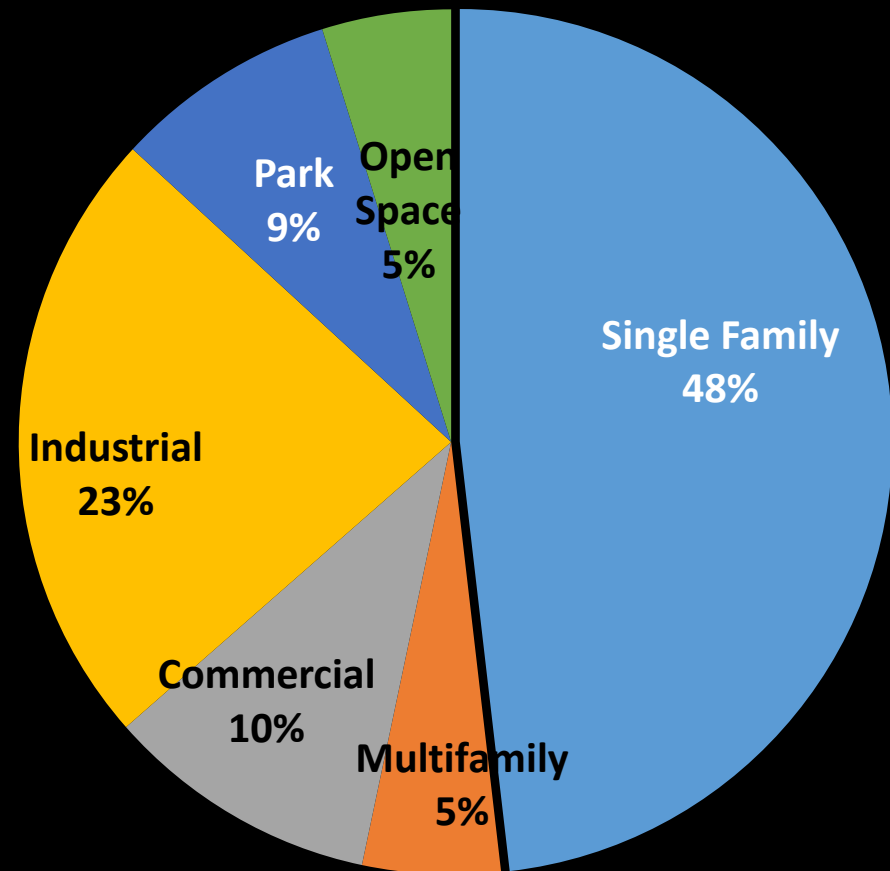


Current
Comprehensive
Plan Map
Adopted by Ord.
20-006



Total City Acreage

Comprehensive Plan Designations	Current Acres
Single Family	
· Low Density	866.86
· Medium Density	3,608.65
· High Density	437.49
Multi-Family	
· Low Density	290.01
· High Density	256.71
Commercial	974.56
Industrial	2423.0
Park	850.72
Open Space / Green Space	492.0
Total acreage:	10,200



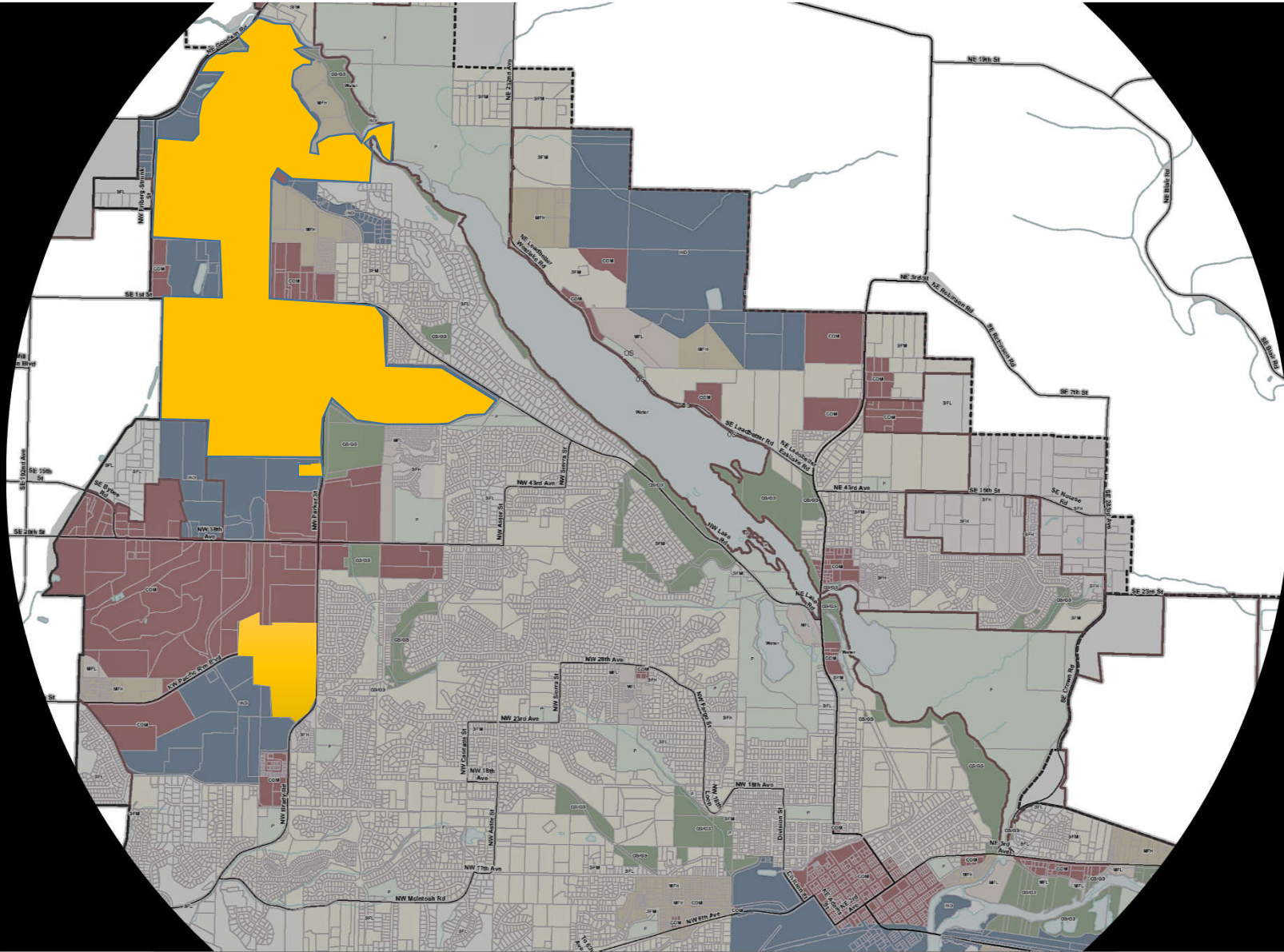


Industrial

Comprehensive Plan

- Land Uses
- Economic Development

Zoning: LI/BP; BP; HI; LI



Light Industrial/Business Park Zone



Camas Meadows Dr.

Plexsys
Lightfeet
Reality
Oregon Ice Cream
Logitech

NW Lake Road

Safe Fire
Almar Tools
Wafer Tech
Samson Sports

NW Pacific Rim Dr.

Kärcher
Furuno
(West-Adjacent) Holland Shopping Center

Commercial

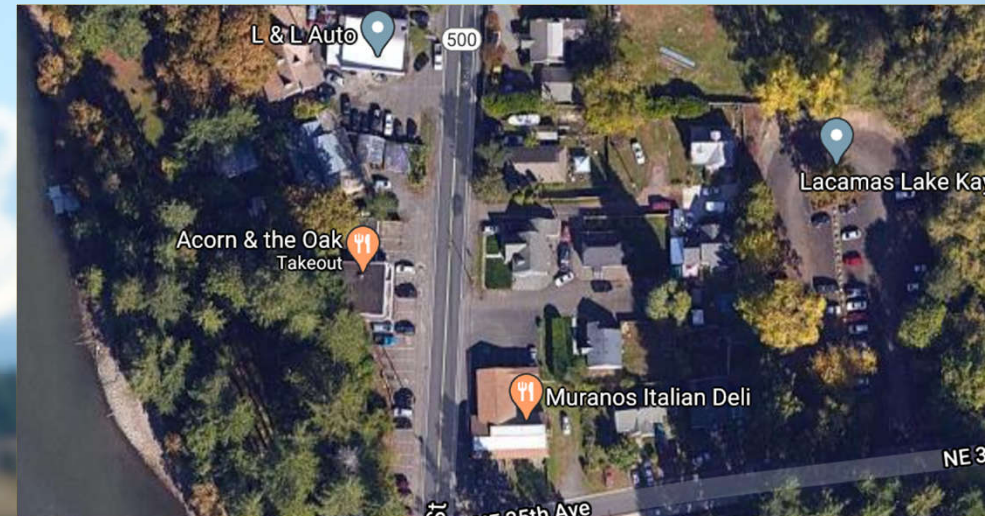
Comprehensive Plan

- Land Use
- Economic Development

Zoning: DC; MX; RC; NC; CC

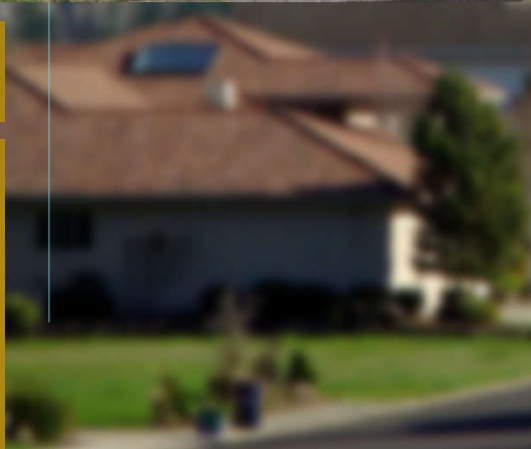
Mixed Use Zone

12



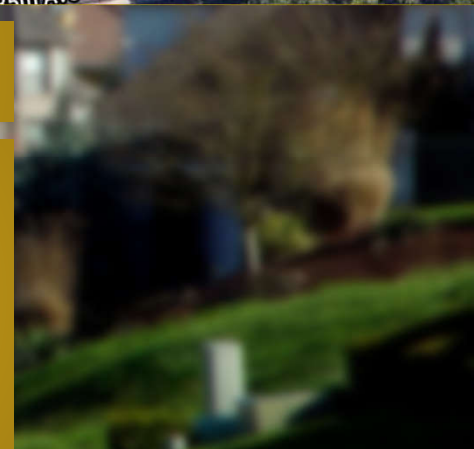
2nd Avenue

South of Safeway
Chiropractic clinics
Opus Music
School District (Life skills home)



Everett Street

Acorn & the Oak
Murano's Deli
L&L Auto
Kayak Rentals



Evaluation Criteria

Impact upon

- Comprehensive Plan or zoning code?
- Surrounding properties?
- Code & other adopted documents?
- Alternatives to the proposal?

Vanport
#CPA21-01

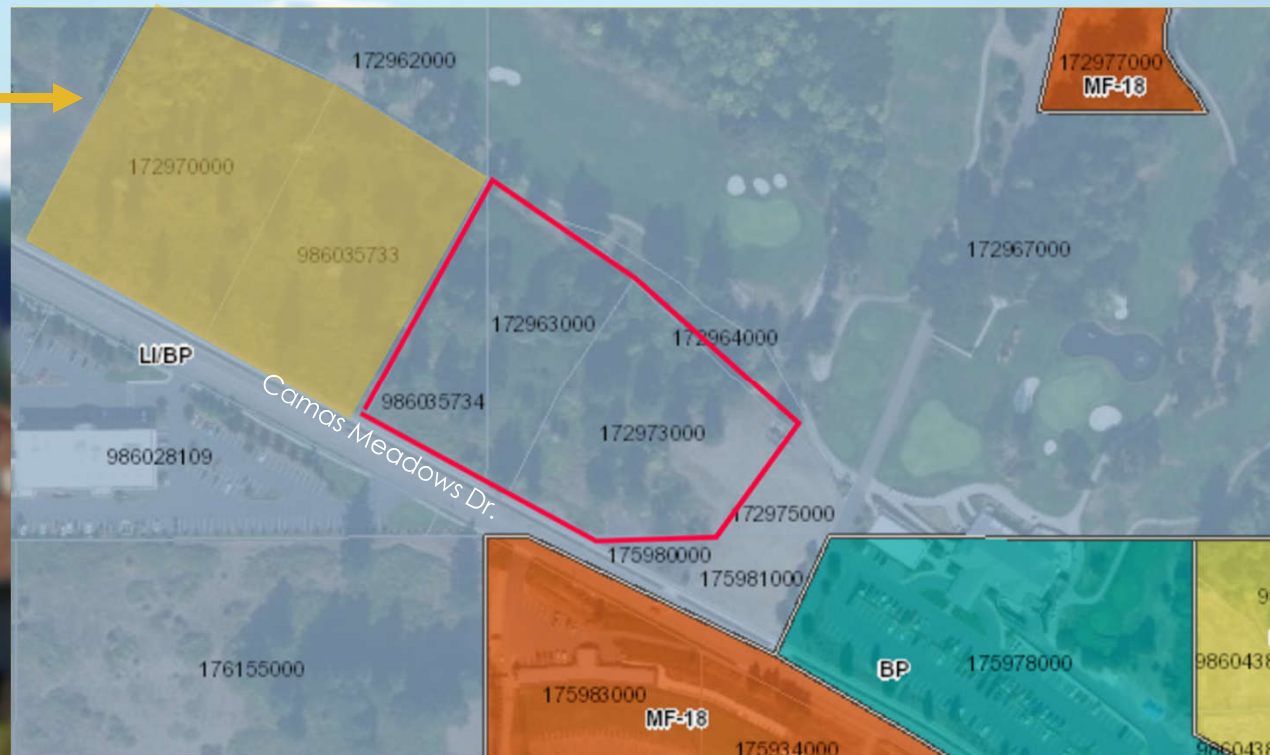
Size: 4.8 acres

Current: LI/BP - Industrial

Proposed: MX - Commercial

Current Use: Vacant

Adjacent Use: Golf Course



Vanport
#CPA21-01

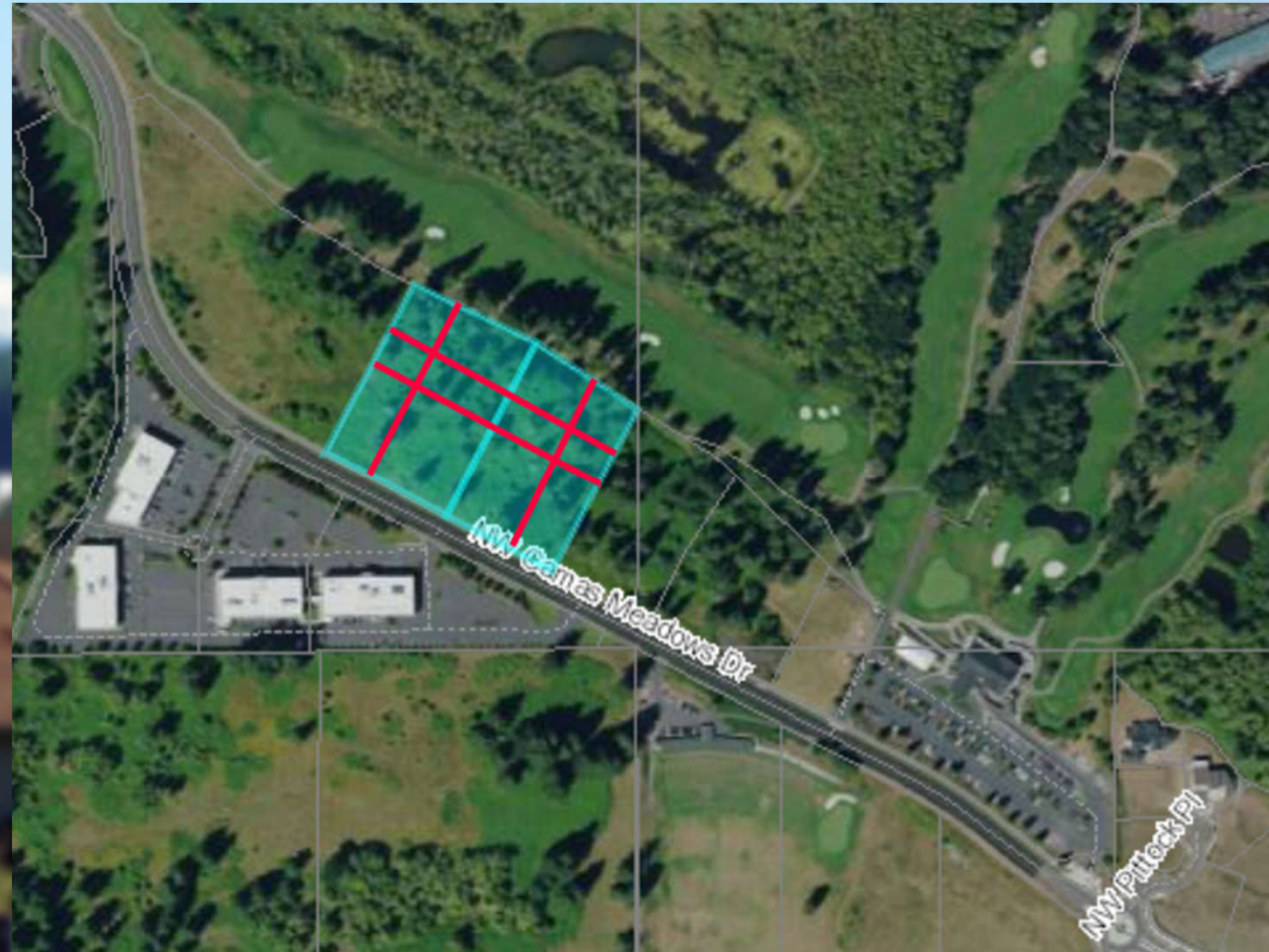
Size: 4.8 acres

Current: LI/BP - Industrial

Proposed: MX - Commercial

Current Use: Vacant

Adjacent Use: Golf Course



Next Steps

- ✓ Conduct public hearing
- ✓ Deliberate and forward a recommendation to City Council
 - ▶ Adoption,
 - ▶ Rejection or
 - ▶ Deferral of each proposed change