



BEND, OR
2777 NW Lolo Drive
Suite 150
Bend, OR 97703
(541) 317-8429
www.aks-eng.com

KEIZER, OR
3700 River Road N
Suite 1
Keizer, OR 97303
(503) 400-6028

THE DALLES, OR
3775 Crates Way
The Dalles, OR 97058
(541) 296-9177

TUALATIN, OR
12965 SW Herman Road
Suite 100
Tualatin, OR 97062
(503) 563-6151

VANCOUVER, WA
9600 NE 126th Avenue
Suite 2520
Vancouver, WA 98682
(360) 882-0419

WHITE SALMON, WA
107 W Jewett
Suite 100
White Salmon, WA 98672
(509) 281-3227

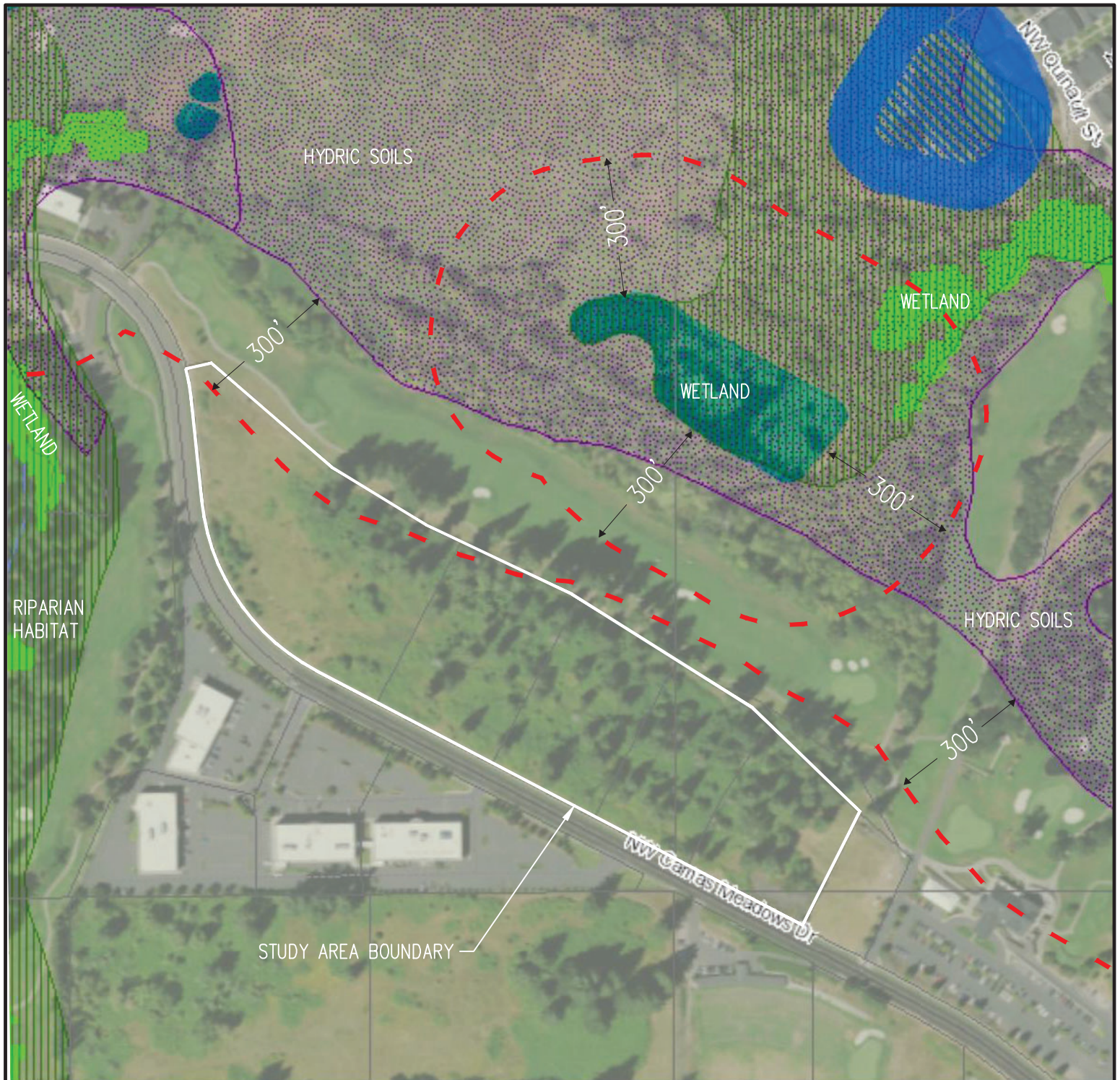
Date: 8/15/2023
To: Madeline Sutherland, City of Camas Planner
From: Stacey Reed, PWS, Senior Wetland Scientist
AKS Job No.: 9030
Project: Camas Meadows Hole 9 Mixed Use Development CUP23-01
Subject: Off-site Wetlands

According to Clark County online GIS mapping, permitted wetlands associated with the development of the adjacent golf course are located greater than 300 feet from the project (see attached Figure 5).

The County GIS hydric soil layer is barely located within 300 feet of the project site, the maximum buffer width per City code. However, hydric soil mapping doesn't necessarily indicate wetland conditions are present. According to the USDA Natural Resources Conservation Service (NRCS), hydric Cove silty clay loam, 0%-3% slopes (Unit CvA) is mapped off-site on the golf course as a deep, poorly drained soil that formed in mixed alluvium from sedimentary and basic igneous rocks. It is likely drainage improvements associated with the development of the golf course have changed the historic hydrology in this area. The County permitted wetland mapping is a more reliable indicator as this mapping illustrates wetlands delineated for the development of the golf course.

The immediate off-site area on the golf course mapped within hydric soil is dominated by Douglas fir trees. Douglas fir trees are considered by U.S. Army Corps of Engineers as a *Facultative Upland (FACU)* plant species, defined as a species that usually occurs in non-wetlands (estimated probability 67%-99%). There are no physical field indications (inundation signatures on aerial photos, etc) suggesting the hydric soil mapping immediately off-site is wetland.

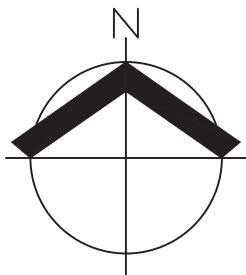
Please let me know if you have any questions.



Legend	
Taxlots	Lake - DNR
Habitat	All Roads
Habitat Area	Interstate
Adjacent to Habitat Area	State Route
Riparian Habitat	Arterial
Hydric Soils	Forest Arterial
Potential Wetlands Presence	Minor Collector
Permitted Wetland	Forest Collector
Modeled Wetland	Private or Other
Stream - DNR	Cities Boundaries
	Urban Growth Boundaries

CLARK COUNTY MAPS ONLINE

DATE: 08/15/2023



SCALE: 1" = 250 FEET



ORIGINAL PAGE SIZE: 8.5" x 11"

**MODELED AND PERMITTED WETLAND MAP
CAMAS MEADOWS SUBDIVISION CRITICAL AREAS ASSESSMENT**

**FIGURE
5**

AKS ENGINEERING & FORESTRY, LLC
9600 NE 126TH AVE, STE 2520
VANCOUVER, WA 98682
P: 360.882.0419 F: 360.882.0426 aks-eng.com



DRWN: RAS
CHKD: SKT
AKS JOB:
9030