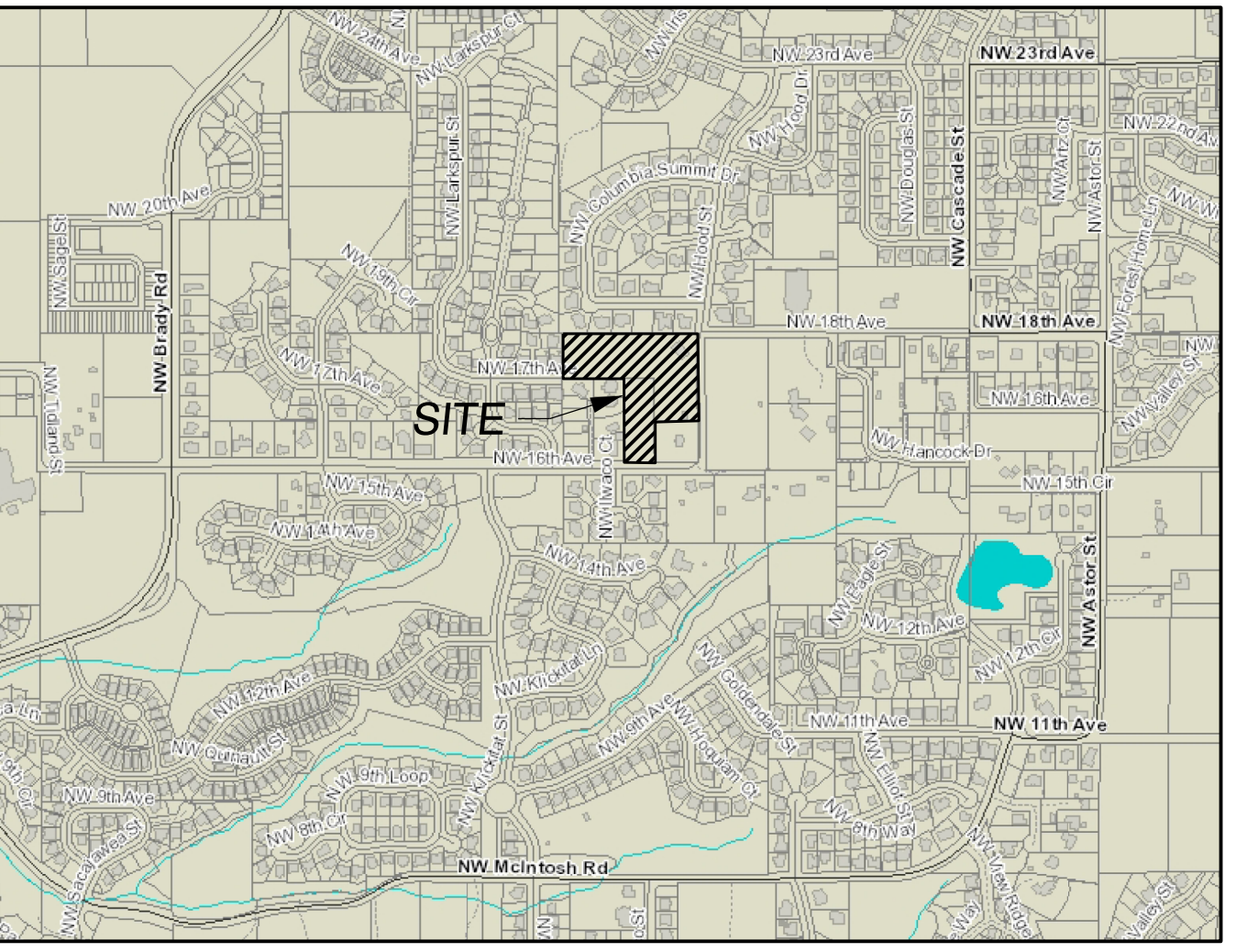


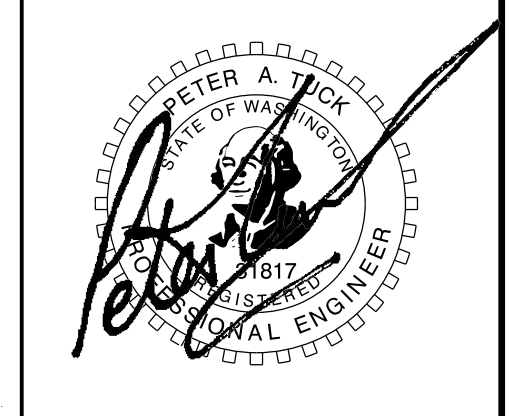
CLIENT:  
MODERN NW INC  
8101 NE GLISAN  
PORTLAND, OR 97213  
PH: (971) 322-3318  
CONTACT: Sergey Marandiyuk  
EMAIL: sergey@modernnw.com



VICINITY MAP  
NOT TO SCALE

PRELIMINARY UTILITY AND STORMWATER PLAN FOR:  
**HOOD STREET SUBDIVISION**

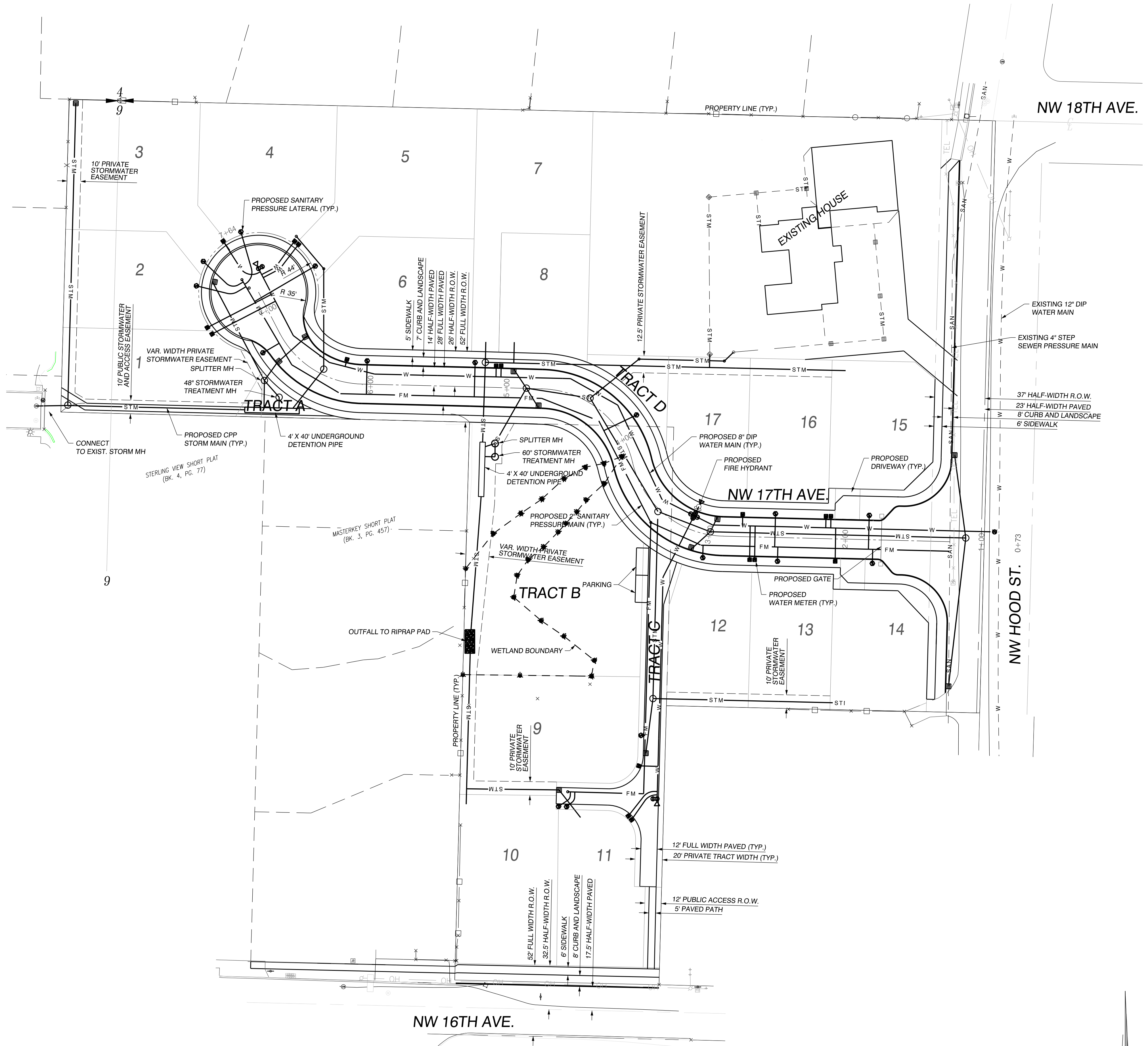
OLSON LAND SURVEYORS  
ENGINEERS  
ENGINEERING INC. 222 E. EVERGREEN, VANCOUVER, WA 98660  
360-890-1895  
360-890-8926



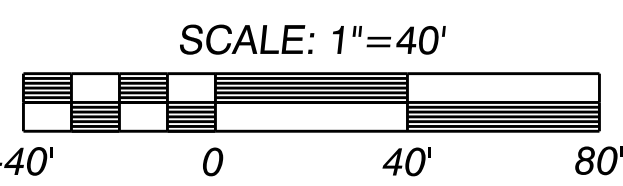
9/6/2021

CHANGES / REVISIONS	
DESCRIPTION:	DATE:

DESIGNED: TJB
DRAWN: TJB
CHECKED: PAT
DATE: JULY 2021
SCALE: H: 1"=40' V:
COPYRIGHT 2021, OLSON ENGINEERING, INC.
HOOD STREET SUBDIVISION
JOB NO.: A10123.01.01
<b>SHEET</b>
<b>C1.0</b>



- SANITARY:**
- 1) THERE IS AN EXISTING 4" SANITARY PRESSURE (STEP) MAIN IN NE HOOD STREET.
  - 2) A NEW PRESSURE MAIN WILL BE EXTENDED INTO THE DEVELOPMENT TO SERVE LOTS 1 THROUGH 17.
  - 3) ALL PROPOSED LOTS WILL BE SERVED WITH A PRESSURE SERVICE LATERAL.
- WATER:**
- 1) THERE IS AN EXISTING 12" WATER MAIN IN NW HOOD ST, NW 16TH AVE AND NW 17TH AVE.
  - 2) A WATER MAIN WILL BE CONSTRUCTED THAT EXTENDS THE EXISTING MAIN IN NE HOOD ST. INTO THE SITE.
  - 3) ALL PROPOSED LOTS WILL INCLUDE AN INDIVIDUAL METER.
  - 4) PROPOSED FIRE HYDRANTS WILL BE ADDED THROUGH THE SITE TO MEET FIRE CONTROL REQUIREMENTS AND WILL BE LOCATED AS REQUIRED BY THE FIRE MARSHALL.
- STORMWATER:**
- 1) ALL STORMWATER SYSTEMS WILL BE DESIGNED IN CONFORMANCE WITH CITY OF CAMAS STANDARDS AND THE STORMWATER MANAGEMENT MANUAL FOR WESTERN WASHINGTON.
  - 2) ALL STORMWATER FACILITIES WILL BE PRIVATELY OWNED AND MAINTAINED BY THE HOA WITH RIGHT-OF-ENTRY TO THE CITY OF CAMAS FOR INSPECTION PURPOSES.
  - 3) NATIVE SOILS ON THE SITE ARE CONSIDERED TO BE WWHM GROUP 4 (USDA GROUP C).
  - 4) STORMWATER RUNOFF FROM THE ON SITE PAVEMENT, SIDEWALKS, DRIVEWAYS, AND LANDSCAPE AREAS WILL BE COLLECTED IN CATCH BASINS AND ROUTED TO BIORETENTION CELLS (CONTECH STORMFILTER OR SIMILAR) FOR TREATMENT. ROOF DOWNSPOUTS AND LOW POINT CRAWL SPACE DRAINS WILL BE ROUTED VIA INDIVIDUAL LATERAL CONNECTIONS DIRECTLY TO AN UNDERGROUND DETENTION PIPE. QUANTITY CONTROL REQUIREMENTS WILL BE MET WITH AN UNDERGROUND DETENTION PIPE. RELEASE OF STORMWATER WILL BE AT OR BELOW PREDEVELOPED RATES.



J:\data\A10000\A10100\A10120\A10123\Engineering\Prelim\A10123.e.prelim.C1.0.utility.dgn  
M:\MicroStation V8\pen tables\HP5000\street paving.tbl