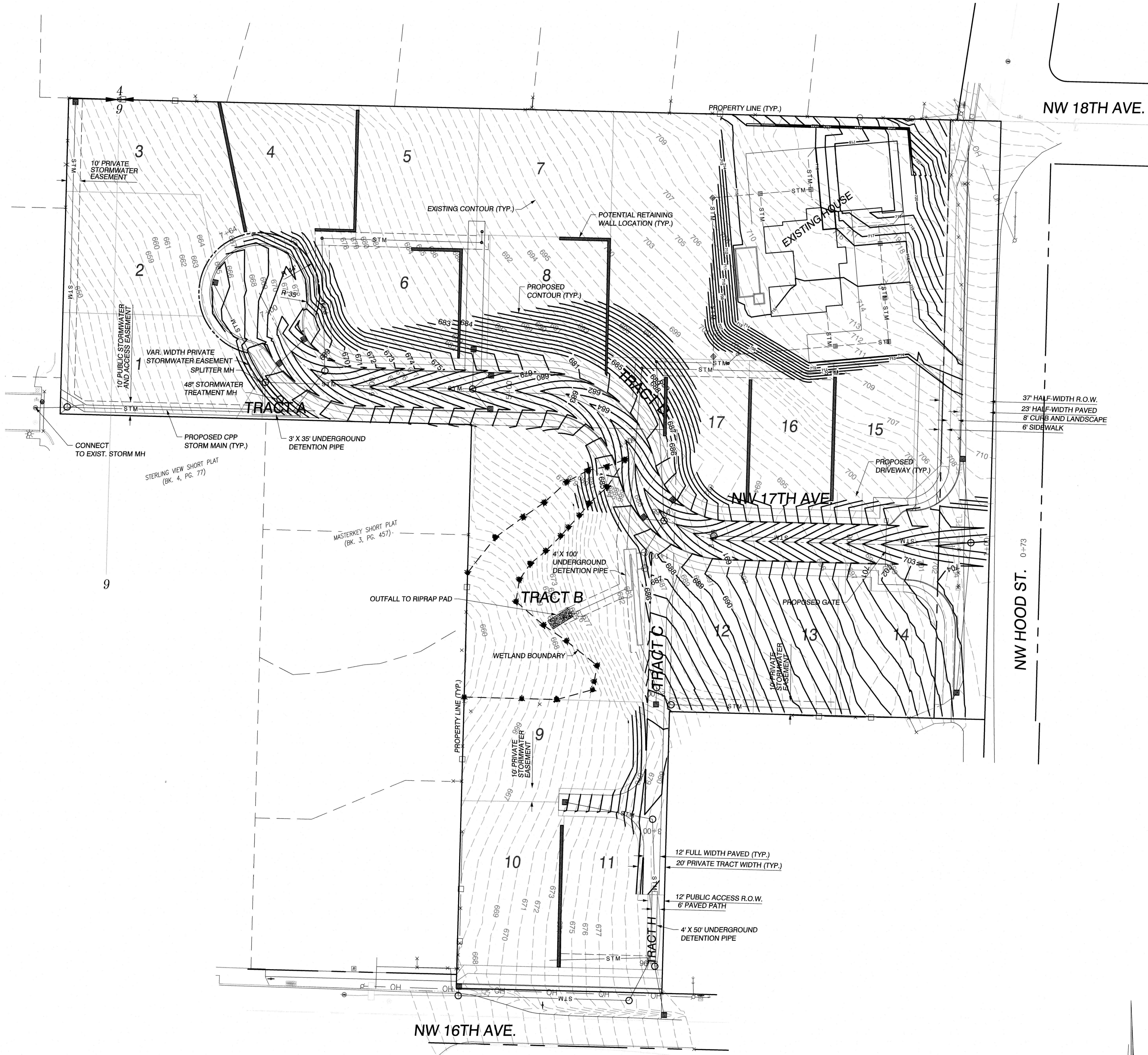


CLIENT:
MODERN NW INC
8101 NE GLISAN
PORTLAND, OR 97213
PH: (871) 322-3318
CONTACT: Sergey Marandyuk
EMAIL: sergey@modernnw.com

APPROXIMATE EARTHWORK VOLUMES

CUT 4,500 C.Y.
FILL 2,000 C.Y.

NOTE:
THE CUT AND FILL FIGURES ABOVE REPRESENT APPROXIMATE QUANTITIES CALCULATED FROM THE EXISTING SURFACE TO FINISHED GRADE AND DO NOT INCLUDE STRIPPINGS, ROAD EXCAVATION, TRENCH SPOILS, OVER EXCAVATION, SHRINKAGE, AND SWELL ETC. CONTRACTORS ARE SOLELY RESPONSIBLE FOR QUANTITY ESTIMATES FOR BIDDING PURPOSES.



PRELIMINARY GRADING PLAN FOR:
HOOD STREET SUBDIVISION

OLSON LAND SURVEYORS
ENGINEERS
ENGINEERING INC. 222 E. EVERGREEN, VANCOUVER, WA 98660
360-695-1895
503-389-6936



CHANGES / REVISIONS	
DESCRIPTION:	DATE:

DESIGNED: TJB
DRAWN: TJB
CHECKED: PAT
DATE: JULY 2021
SCALE: H: 1"=40'
V:
COPYRIGHT 2021, OLSON ENGINEERING, INC.
HOOD STREET SUBDIVISION
JOB NO.: A10123.01.01

SHEET
C2.0

