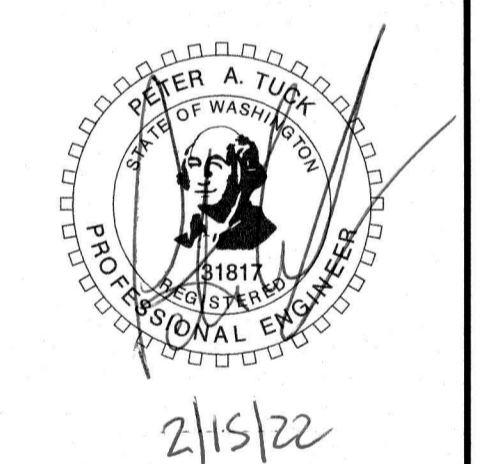


CLIENT:
 MODERN NW INC
 8101 NE GLISAN
 PORTLAND, OR 97213
 PH: (971) 322-3318
 CONTACT: Sergey Maranduyk
 EMAIL: sergey@modernnw.com

DEVELOPED TREATMENT CATCHMENT PLAN FOR:
HOOD STREET SUBDIVISION

OLSON LAND SURVEYORS
 ENGINEERS
 ENGINEERING INC., 222 E. EVERGREEN, VANCOUVER, WA 98660
 360-865-1885
 360-889-8936



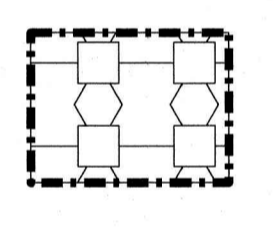
CATCHMENT A1

AREAS:
 LANDSCAPE=0.13 AC
 DRIVEWAY=0.163 AC
 ROAD=0.060 AC



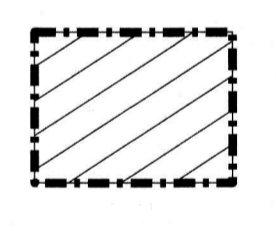
CATCHMENT A2

AREAS:
 LANDSCAPE=0.066 AC
 DRIVEWAY=0.034 AC
 ROAD=0.062 AC



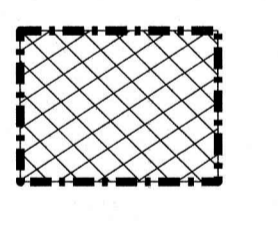
CATCHMENT B1

AREAS:
 ROOF=0.076 AC
 LANDSCAPE=0.256 AC
 SIDEWALK=0.093 AC
 DRIVEWAY=0.230 AC
 ROAD=0.407 AC



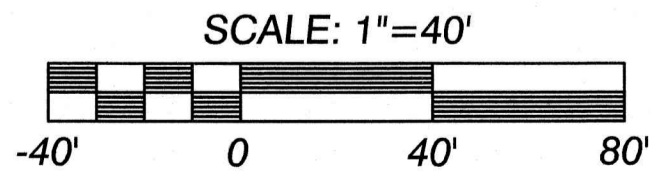
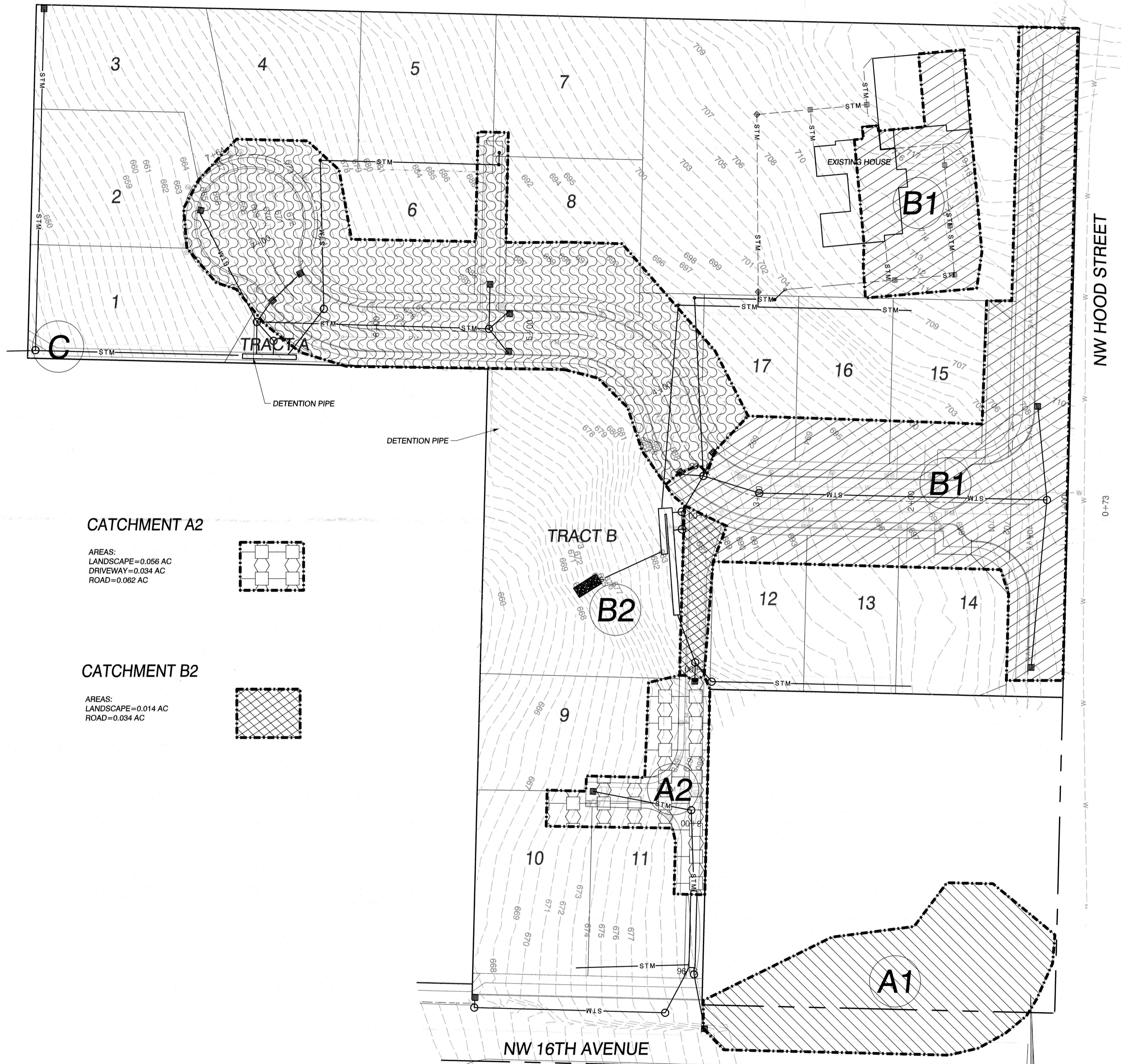
CATCHMENT B2

AREAS:
 LANDSCAPE=0.014 AC
 ROAD=0.034 AC



CATCHMENT C

AREAS:
 LANDSCAPE=0.354 AC
 SIDEWALK=0.102 AC
 DRIVEWAY=0.069 AC
 ROAD=0.306 AC



CHANGES / REVISIONS

DESCRIPTION:	DATE:

DESIGNED: TJB

DRAWN: TJB

CHECKED: PAT

DATE: JULY 2021

SCALE: H: 1"=40'
 V:

COPYRIGHT 2021, OLSON ENGINEERING, INC.

HOOD STREET SUBDIVISION

JOB NO.: A10123.01.01

SHEET

CP2.1

J:\data\A10000\A10100\A10120\A10123\Engineering\PrelimSheets\A10123.e.CP2.1.dev.catch.treatment.dgn
 M:\MicroStation V8i\pntables\HP5000\street paving.tbl