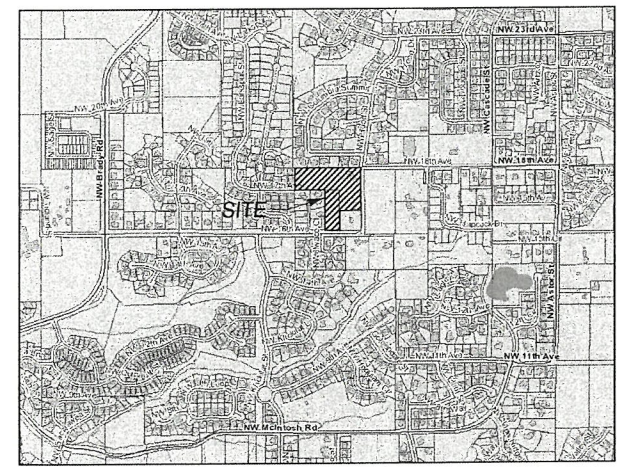
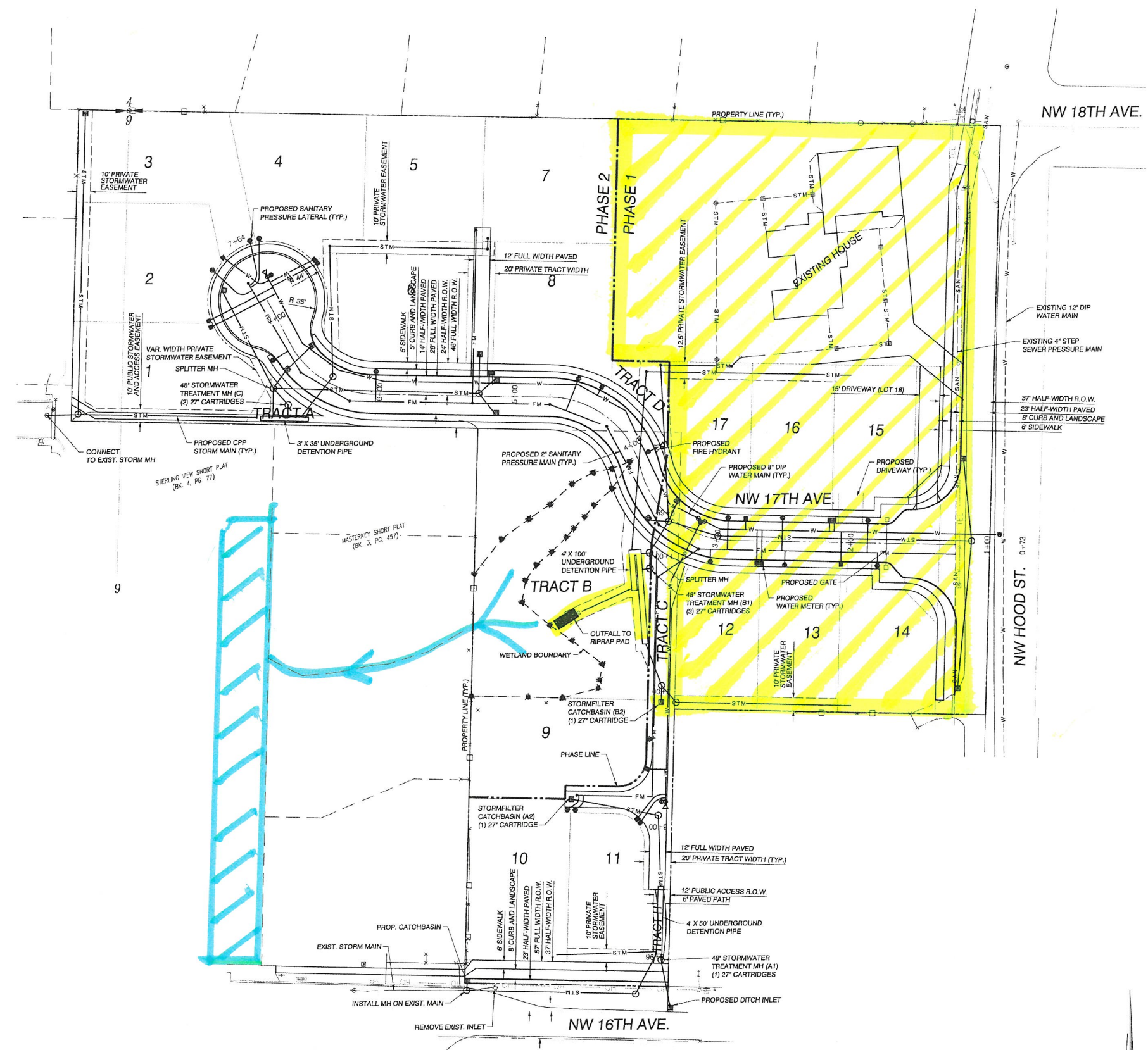


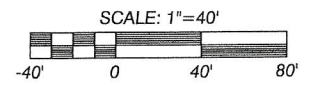
CLIENT:
 MODERN NW INC
 8101 NE GLISAN
 PORTLAND, OR 97213
 PH: (971) 322-3318
 CONTACT: Sergey Maranduyk
 EMAIL: sergey@modernnw.com



VICINITY MAP
 NOT TO SCALE



- SANITARY:**
- 1) THERE IS AN EXISTING 4" SANITARY PRESSURE (STEP) MAIN IN NE HOOD STREET.
 - 2) A NEW PRESSURE MAIN WILL BE EXTENDED INTO THE DEVELOPMENT TO SERVE LOTS 1 THROUGH 17.
 - 3) ALL PROPOSED LOTS WILL BE SERVED WITH A PRESSURE SERVICE LATERAL.
- WATER:**
- 1) THERE IS AN EXISTING 12" WATER MAIN IN NW HOOD ST, NW 16TH AVE AND NW 17TH AVE.
 - 2) A WATER MAIN WILL BE CONSTRUCTED THAT EXTENDS THE EXISTING MAIN IN NE HOOD ST. INTO THE SITE.
 - 3) ALL PROPOSED LOTS WILL INCLUDE AN INDIVIDUAL METER.
 - 4) PROPOSED FIRE HYDRANTS WILL BE ADDED THROUGH THE SITE TO MEET FIRE CONTROL REQUIREMENTS AND WILL BE LOCATED AS REQUIRED BY THE FIRE MARSHALL.
- STORMWATER:**
- 1) ALL STORMWATER SYSTEMS WILL BE DESIGNED IN CONFORMANCE WITH CITY OF CAMAS STANDARDS AND THE STORMWATER MANAGEMENT MANUAL FOR WESTERN WASHINGTON.
 - 2) ALL STORMWATER FACILITIES WILL BE PRIVATELY OWNED AND MAINTAINED BY THE HOA WITH RIGHT-OF-ENTRY TO THE CITY OF CAMAS FOR INSPECTION PURPOSES.
 - 3) NATIVE SOILS ON THE SITE ARE CONSIDERED TO BE WWHM GROUP 4 (USDA GROUP C).
 - 4) STORMWATER RUNOFF FROM THE ON SITE PAVEMENT, SIDEWALKS, DRIVEWAYS, AND LANDSCAPE AREAS WILL BE COLLECTED IN CATCH BASINS AND ROUTED TO BIORETENTION CELLS (CONTECH STORMFILTER OR SIMILAR) FOR TREATMENT. ROOF DOWNSPOUTS AND LOW POINT CRAWL SPACE DRAINS WILL BE ROUTED VIA INDIVIDUAL LATERAL CONNECTIONS DIRECTLY TO AN UNDERGROUND DETENTION PIPE. QUANTITY CONTROL REQUIREMENTS WILL BE MET WITH AN UNDERGROUND DETENTION PIPE. RELEASE OF STORMWATER WILL BE AT OR BELOW PREDEVELOPED RATES.



J:\data\A10000\A10100\A10120\A10123\Engineering\Prelim\A10123.e.prelim.C1.0.utility.dgn
 M:\MicroStation V8\pantables\HP5000\street_paving.tbl

PRELIMINARY UTILITY AND STORMWATER PLAN FOR:
HOOD STREET SUBDIVISION

OLSON LAND SURVEYORS
 ENGINEERS
 ENGINEERING INC., 222 E. EVERGREEN, VANCOUVER, WA, 98680



CHANGES / REVISIONS	
DESCRIPTION:	DATE:

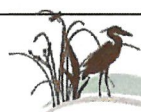
DESIGNED: TJB
DRAWN: TJB
CHECKED: PAT
DATE: JULY 2021
SCALE: H: 1"=40' V:
COPYRIGHT 2021, OLSON ENGINEERING, INC.
HOOD STREET SUBDIVISION
JOB NO.: A10123.01.01
SHEET
C1.0



APPLICANT:
 Modern NW
 8101 NW Glisan
 Portland, OR 97213

PURPOSE:
 Wetland Rating Graphics

Hydroperiods
 1811 NW Hood Street
 Camas, Washington



OLSON ENVIRONMENTAL, LLC
 ENVIRONMENTAL SERVICES • WETLAND RESTORATION

222 E. Evergreen Blvd., Vancouver, WA 98660 ph: 360-693-4555 fax: 360-699-6242

PROPOSED ACTIVITIES IN:
 Lacamas Creek Watershed
LEGAL: NE & NW 1/4 of S09, T1N, R3E
 W. M.
NEAR: Camas, Washington
COUNTY: Clark County
DATE: 06/16/2021

Appendix B3