

# Draft Memorandum

Date: September 13, 2022

Subject: Estimated Land Use Capacity of the Draft Preferred Concept  
North Shore Subarea Plan, Phase 2

From: Nicole McDermott, WSP USA  
Emma Johnson, WSP USA

To: Robert Maul, City of Camas

---

This memorandum summarizes the estimated development capacity of the Draft Preferred Concept prepared for the North Shore subarea plan. The memorandum provides estimates for the residential capacity (dwelling units and residents) and employment capacity (jobs) of the Draft Preferred Concept and existing zoning.

## 1. BACKGROUND

The Draft Preferred Concept was developed from March 2022 to July 2022 based on feedback on the draft options (Option A and Option B) presented at a virtual open house in February 2022. Feedback came from the community, Steering Committee, and the Community Advisory Committee. Like the draft options, the Draft Preferred Concept was guided by the adopted vision statement for the North Shore subarea:

1. **Preserve the North Shore's natural beauty and environmental health.** Policies, regulations and design rules must protect significant trees, tree groves, and surrounding lakes. Identify and preserve views to the treed hillside and the lake.
2. **Plan a network of green spaces and recreational opportunities.** Integrate a variety of parks, playgrounds, trails and open spaces into residential and employment areas throughout the North Shore area. Create a "green corridor" along the lake that completes the Heritage Trail, provides lake access and buffers the lake from adjacent development.
3. **Cluster uses for a walkable community.** Concentrate homes close to schools and around commercial nodes so residents can meet daily needs without driving. Use sidewalks, pedestrian trails and bike paths to connect residents to neighborhood destinations.
4. **Provide a variety of housing options.** Plan for diverse housing types appropriate for varying incomes, sizes and life stages.
5. **Locate Industrial Parks and Commercial Centers to the north.** Protect the environmental integrity of the lake and aesthetic quality of the area by siting light industrial and office uses away from the lake and adjacent to the airport. Encourage commercial activities along high traffic corridors, such as NE Everett St.

6. **Favor local-serving businesses.** Encourage small, local businesses such as restaurants, cafes and grocers that serve North Shore residents and businesses, while complementing downtown Camas.
7. **Plan for needed schools and infrastructure.** Ensure adequate roads, schools and utilities are in place before development occurs. Invest in transportation improvements such as a new roadway through the North Shore and NE Everett improvements to minimize traffic impacts and maximize safety.
8. **Strive to maintain Camas' small town feel.** Sustain the city's quality of life through phased and sustainable growth that contributes to community character.

## 2. KEY CONSIDERATIONS

Below are some of the key findings from the Camas Housing Action Plan that provide context for employment and housing needs in the city.

- **Employment Needs.** Existing jobs in the city consist primarily of manufacturing, finance and insurance, educational services, professional, scientific, and technical services (about 73% of all jobs).
  - Manufacturing jobs have been declining (from 46% in 2002 to 26% in 2018) and are predicted to continue declining as a percentage of total jobs. Job growth is predicted to occur primarily in education and health services, leisure and hospitality, government, and professional and business services.
  - There is a high level of commuting into and out of the city by workers and residents to access employment. Data indicates that many residents with higher-paying jobs work outside of the city, while residents with lower-paying jobs work in the city.
  - Camas would benefit from increasing the number of higher-paying jobs in the city, which would allow for reduced commutes (and commuting costs) and provide additional tax revenue.
- **Population Growth.** Camas is projected to increase by approximately 11,800 residents by 2040 (a 47% increase). An estimated 4,589 dwelling units are needed to accommodate new residents.
  - A variety of housing types are needed to provide residents the ability to select housing that best meets the needs of their household (family or non-family) and their budget.
- **Ageing Population.** About 85% of the population growth from 2010 to 2018 was in residents aged 40 and over. The percentage of the population ages 40 and under declined.
  - Older residents (ages 60+) need a variety of housing options in order to select appropriate housing that meets their physical abilities and budget. In addition, older residents often benefit from being located near services and transit, as driving may not be an option.
- **Affordability.** Housing is considered “affordable” when monthly housing costs do not exceed 30% of monthly income. In Camas, over 40% of renters are currently spending more than 30% of their income on housing, compared to 20% of homeowners.

- About 40% of projected future housing needs will be for units affordable to households with low or moderate incomes, with a mix of rental and for-sale housing.
- **Housing Options.** There is a lack of diverse housing types in the city, particularly units under 2,000 square feet.
  - To accommodate the variety of new households anticipated, and to better serve existing households with difficulty affording their housing costs, Camas will need housing options diverse in type, tenure, and cost.

### 3. DEVELOPMENT ASSUMPTIONS

The estimated land use capacity is based on a set of assumptions on how different land uses would develop. The assumptions have been refined over the course of the project and were informed by the Clark County Buildable Lands Model and Camas Housing Action Plan, as well as feedback from the Steering Committee and City based on their recent experiences with development in the region. Table 1 identifies the prior and current development assumptions.

**Table 1. Development Assumptions**

Prior Assumption	Current Assumption	Rationale
30% of gross acres would not develop due to the presence of critical areas or would develop as roads and/or utilities	No development would occur on wetlands.	Wetlands are regulated and protected at the local, state, and sometimes federal level to a greater extent than other types of critical areas. Protections include outright prohibition of development on certain high functioning wetlands, and increased costs for developers for development that affects any type of wetland.
	Development would occur on 25% of wetland buffers and other types of critical areas and their buffers.	This assumption is consistent with recent applications for development in the city, as well as recent projects by members of the Steering Committee.
	30% of the remaining acres would be used for infrastructure (roads and utilities).	This is a common assumption used in planning and is consistent with City and Steering Committee expectations.
2.7 residents per dwelling unit		<i>No revision.</i> This estimate is consistent with the Camas Housing Action Plan.
20 jobs per acre on lands designated as Commercial or Mixed-Use and 9 jobs per acre on lands zoned for Business Park	20 jobs per acre on lands designated for commercial uses, including Commercial, Mixed Use, and Mixed Employment	Based on conversations with the Steering Committee (including the Port of Camas-Washougal and CREDC) as well a market assessment prepared for the North Shore, the “Business Park” designation is now “Mixed Employment.” It is anticipated that development in this designation would be more consistent with commercial/office business

		parks than light industrial uses. The revised jobs estimate is consistent with Clark County's Final 2022 Buildable Lands Report.
70% of developable Mixed Use land would include residential development. The remaining 30% would accommodate commercial uses, public facilities (e.g., schools), open space/parks, etc.		<i>No revision.</i> This estimate is based on input from the Steering Committee.

#### 4. EXISTING ZONING

The existing zoning in the subarea provides a baseline for comparing the Draft Preferred Concept and considerations around the needs for housing and employment lands/jobs. It is also important to consider existing and planned uses that are not reflected in the zoning when estimating land use capacity, as there are two large properties that will not develop per their existing zoning: Lacamas Lake Elementary School and Legacy Lands (the City-owned parcels acquired for parks and open space). The capacity of the subarea based on the existing zoning is summarized below, followed by the capacity of the subarea when the school and recreational properties are taken into account.

*Note: Due to rounding, some numbers may not equal the predicted value.*

Table 2 shows the estimated developable acres under the existing zoning and the capacity for dwelling units and jobs.

**Table 2. Existing Zoning – Residential and Employment Capacity<sup>1</sup>**

Zone	Gross Acres	%	Developable Acres <sup>1</sup>	Max. Density (DU/Acre)	Max. Allowed DU	Jobs/Acre	Jobs
Business Park (BP)	312	32%	101	0	0	20	2,020
Community Commercial (CC)	96	10%	40	0	0	20	808
Mixed use (MX) <sup>2</sup>	15	2%	6	10	65	0	0
Multifamily Residential-18 (R-18)	60	6%	26	18	471	0	0
Multifamily Residential-10 (MF-10)	36	4%	18	10	184	0	0
Residential-6,000 (R-6)	3	0%	1	7.2	5	0	0
Residential-7,500 (R-7.5)	180	18%	80	5.8	462	0	0
Residential-10,000 (R-10)	34	3%	24	4.3	101	0	0
Residential-12 (R-12)	101	10%	44	3.6	158	0	0
Single Family Residential (R1-6) <sup>3</sup>	53	5%	36	7.3	263	0	0

Single Family Residential (R1-10) <sup>3</sup>	39	4%	25	4.4	112	0	0
Parks/Open Space	59	6%	n/a	0	0	0	0
<b>Total</b>	<b>990</b>	<b>100%</b>	<b>402</b>	<b>--</b>	<b>1,820</b>	<b>--</b>	<b>2,829</b>

<sup>1</sup> The estimated capacity reflects the current (revised) development assumptions (detailed in Section 3).

<sup>2</sup> The MX zone does not have a maximum density or a minimum requirement for commercial development. An assumption of residential-only development of 10 dwelling units per acre was made based on prior applications.

<sup>3</sup> Clark County zoning

Table 3 summarizes the acreages by zone for Lacamas Lake Elementary and the City-owned Legacy Lands properties. Table 3 also shows the potential dwelling units and jobs that could have been accommodated on those parcels.

**Table 3. Lacamas Lake Elementary and Legacy Lands – Residential and Employment Capacity<sup>1</sup>**

<b>Zone</b>	<b>Developable Acres</b>	<b>Max. Density (DU/Acre)</b>	<b>Max. Allowed DU</b>	<b>Jobs/Acre</b>	<b>Estimated Jobs</b>
Business Park (BP)	1	0	0	20	21
Community Commercial (CC)	11	0	0	20	222
Multifamily Residential-18 (R-18)	8	18	152	0	0
Multifamily Residential-10 (MF-10)	9	10	95	0	0
Residential-7,500 (R-7.5)	33	5.8	194	0	0
Residential-12 (R-12)	19	3.6	68	0	0
<b>Total</b>	<b>83</b>	<b>--</b>	<b>509</b>	<b>--</b>	<b>243</b>

<sup>1</sup> The estimated capacity reflects the current (revised) development assumptions (detailed in Section 3).

The elementary school and Legacy Lands account for about 200 acres of the subarea, of which approximately 83 acres are estimated to be developable. Approximately 34 acres of employment lands (Community Commercial and Business Park), with the potential for approximately 243 jobs, will not be developed for employment uses. Additionally, approximately 509 dwelling units will no longer be accommodated, as residential development is not anticipated on these parcels.

Table 4 summarizes the estimated capacity for dwelling units and jobs under existing zoning (Table 2), less the capacity from the school and Legacy Lands parcels (Table 3).

**Table 4. Revised Existing Zoning – Residential and Employment Capacity**

<b>Zone</b>	<b>Developable Acres<sup>1</sup></b>	<b>Max. Density (DU/Acre)</b>	<b>Max. Allowed DU</b>	<b>Jobs/Acre</b>	<b>Jobs</b>
Business Park (BP)	100	0	0	20	2,000
Community Commercial (CC)	29	0	0	20	586
Mixed Use (MX) <sup>2</sup>	6	10	65	0	0
Multifamily Residential-18 (R-18)	18	18	319	0	0
Multifamily Residential-10 (MF-10)	9	10	89	0	0
Residential-6,000 (R-6)	1	7.2	5	0	0
Residential-7,500 (R-7.5)	46	5.8	268	0	0
Residential-10,000 (R-10)	24	4.3	101	0	0
Residential-12 (R-12)	25	3.6	91	0	0
Single Family Residential (R1-6) <sup>3</sup>	36	7.3	263	0	0
Single Family Residential (R1-10) <sup>3</sup>	25	4.4	112	0	0
<b>Total</b>	<b>319</b>	<b>--</b>	<b>1,312</b>	<b>--</b>	<b>2,586</b>

<sup>1</sup> Developable acres from Table 2 with the reductions from Table 3.

<sup>2</sup> The MX zone does not have a maximum or minimum density requirement for commercial development. An assumption of residential-only development with 10 dwelling units per acre was made based on prior applications in the MX zone.

<sup>3</sup> Clark County zoning

## 5. DRAFT PREFERRED CONCEPT

Feedback on the draft options from the City, Community Advisory Committee, Steering Committee, and the public open house was used to develop the Draft Preferred Concept. Like the options presented at the open house, the Draft Preferred Concept contains a mix of land uses consisting of:

- Higher Density Residential
- Lower Density Residential
- Commercial
- Mixed Use
- Mixed Employment (formerly Business Park)

The residential and job capacity of the Draft Preferred Concept is summarized below.

### Land Use Overview

Table 5 provides a breakdown of the land uses shown on the Draft Preferred Concept. Additional parks/open space would be accommodated within the other land use categories (for example, a subdivision would be required to provide open space or recreational areas). Likewise, additional school capacity would be added as the population grows and development occurs. The need and location of new school facilities would be identified by the Camas School District as part of their annual planning process.

**Table 5. Draft Preferred Concept – Land Use Overview**

<b>Zone</b>	<b>Gross Acres</b>	<b>Percent of Total Area</b>	<b>Developable Acres<sup>1</sup></b>
North Shore Mixed Employment	113	11%	41
Commercial	17	2%	9
North Shore Mixed Use	121	12%	67
North Shore Higher Density Residential	192	19%	81
North Shore Lower Density Residential	287	29%	121
Parks/Open Space	231	23%	77
School	39	4%	13
<b>Total</b>	<b>1,000</b>	<b>100%</b>	<b>409</b>

<sup>1</sup> The development assumptions are detailed in Section 3.

### Residential Capacity

Table 6 provides an estimate of the maximum number of dwelling units and estimated population that could be accommodated by the Draft Preferred Concept. The residential density of the Lower Density Residential zone was estimated as 5.8 dwelling units per acre, which is the same density as the city's existing R-7.5 zone. An example of this density is the existing single-family homes to the east of NE Everett and south of 43<sup>rd</sup> Avenue, in the North Shore subarea.

Based on feedback from the Steering Committee and housing market specialists, the residential density in the Higher Density Residential zone was revised to allow a range of densities (compared to a density requirement of 18 units per acre, which was used for Options A and B). The proposed zoning would now allow a minimum of 10 dwelling units per acre and a maximum of 18 dwelling units per acre.

**Table 6. Draft Preferred Concept – Residential Capacity**

<b>Zone</b>	<b>Developable Acres</b>	<b>Max. Density (DU/Acre)</b>	<b>Max. Allowed DU</b>	<b>Estimated Population</b>
North Shore Mixed Use	67	28	1,133	3,060
North Shore Higher Density Residential <sup>1</sup>	81	14	1,136	3,067
North Shore Lower Density Residential	121	5.8	700	1,890
<b>Total</b>	<b>269</b>	<b>--</b>	<b>2,969</b>	<b>8,017</b>

<sup>1</sup> An average of 14 dwelling units per acre was used to reflect the proposed density range (10 to 18 dwelling units per acre).

### **Employment Capacity**

Table 7 provides an estimate of the number of jobs that could be accommodated by the Draft Preferred Concept.

**Table 7. Draft Preferred Concept – Employment Capacity**

<b>Zone</b>	<b>Developable Acres</b>	<b>Jobs/Acre</b>	<b>Estimated Jobs</b>
North Shore Mixed Employment	41	20	817
Commercial	9	20	177
North Shore Mixed Use	67	20	405
<b>Total</b>	<b>117</b>	<b>--</b>	<b>1,399</b>

## **6. COMPARING THE DRAFT PREFERRED CONCEPT TO EXISTING ZONING**

Table 8 summarizes the estimated land use capacity of the existing zoning (current and revised) and the Draft Preferred Concept. The revised development assumptions were used to estimate the capacity. The purpose of this comparison is to show how the estimated capacity could change compared to existing conditions.



**Table 8. Comparison of Estimated Capacity**

	Developable Acres	Capacity		
		Dwelling Units	People	Jobs
Existing Zoning	402	1,820	4,915	2,829
Revised Existing Zoning (less school and Legacy Lands)	319	1,312	3,542	2,586
Draft Preferred Concept	409	2,969	8,017	1,399

Table 9 shows the estimated changes in capacity between the Draft Preferred Concept and the existing zoning (current and revised).

**Table 9. Estimated Changes in Capacity**

	Compared to Existing Zoning			Compared to Revised Existing Zoning		
	Dwelling Units	People	Jobs	Dwelling Units	People	Jobs
<b>Draft Preferred Concept</b>	+ 1,149	+ 3,102	- 1,430	+ 1,657	+ 4,475	- 1,187

## 7. COMPARING THE DRAFT PREFERRED CONCEPT TO OPTIONS A AND B

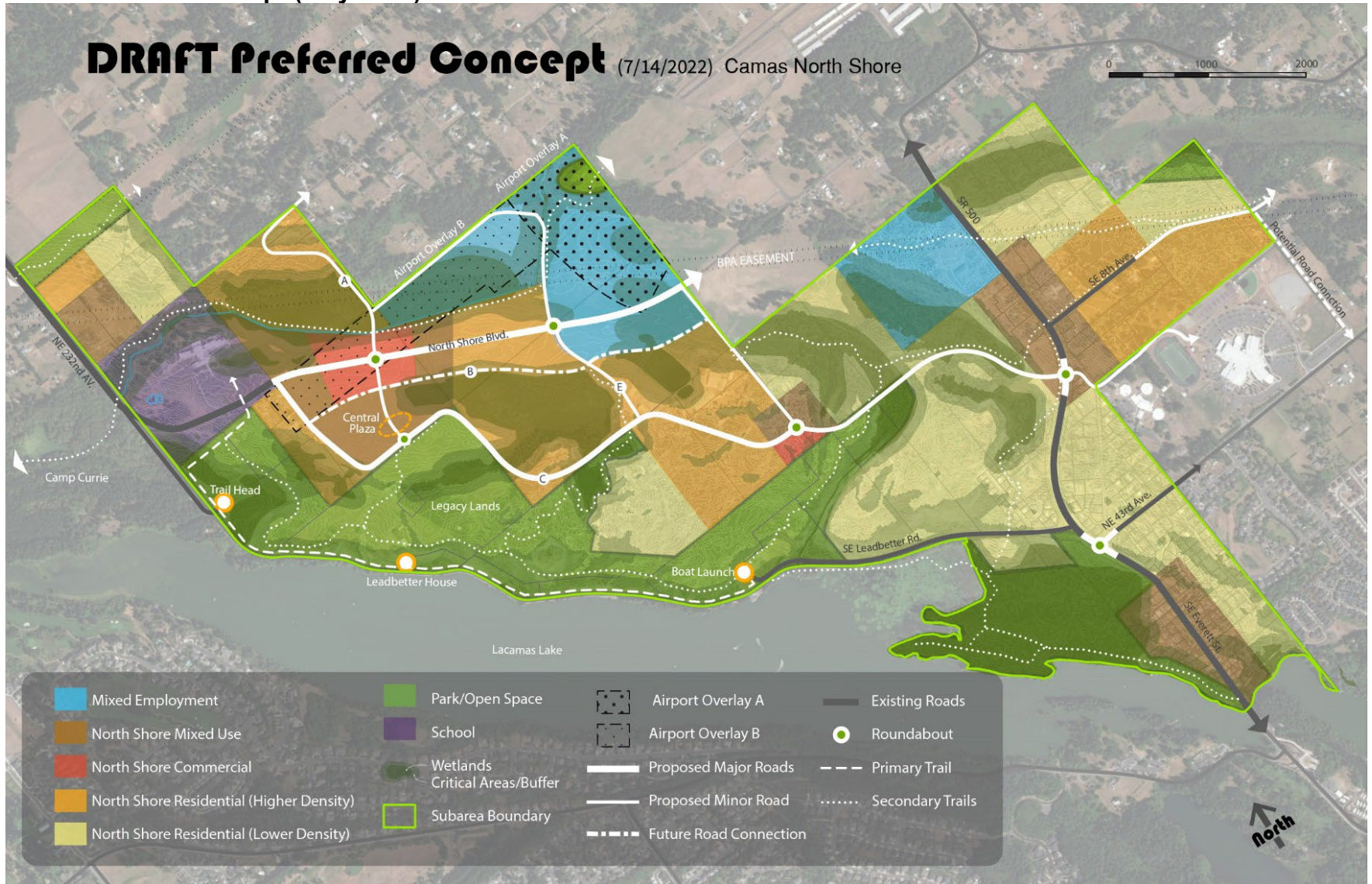
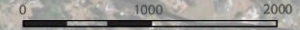
Table 10 summarizes the estimated capacity of the draft options as presented at the open house in February and March 2022. The capacity estimates for Options A and B are based on the prior development assumptions, and the estimates for the Draft Preferred Concept are based on the revised assumptions. The purpose of this comparison is to show how the capacity estimates have changed since the prior open house, due to changes to the concept map as well to the development assumptions and the proposed density requirements.

**Table 10. Estimated Capacity – Draft Options and Draft Preferred Concept**

	Developable Acres	Capacity		
		Dwelling Units	People	Jobs
Draft Option A	492	3,679	9,933	2,560
Draft Option B	490	4,735	12,785	2,166
Draft Preferred Concept	409	2,969	8,017	1,399

Draft Preferred Concept (July 2022)

# DRAFT Preferred Concept (7/14/2022) Camas North Shore



**Option A (February 2022)**

**Option A** Camas North Shore



**Option B (February 2022)**

**Option B** Camas North Shore

