

MACKENZIE.



**CAMAS-WASHOUGAL FIRE DEPARTMENT
CITY COUNCIL MEETING**

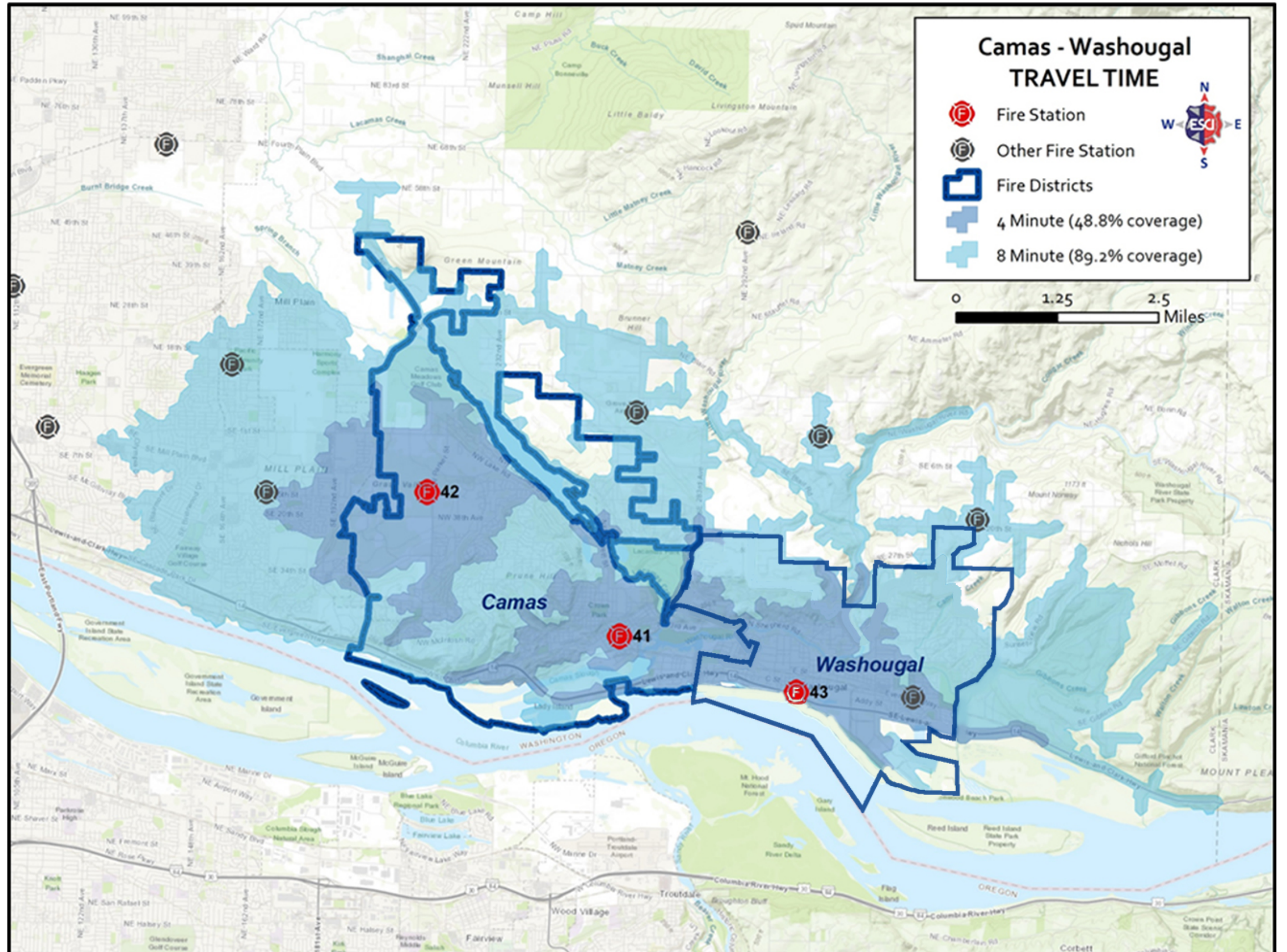
Camas City Council Meeting | 04.04.2022

TEAM



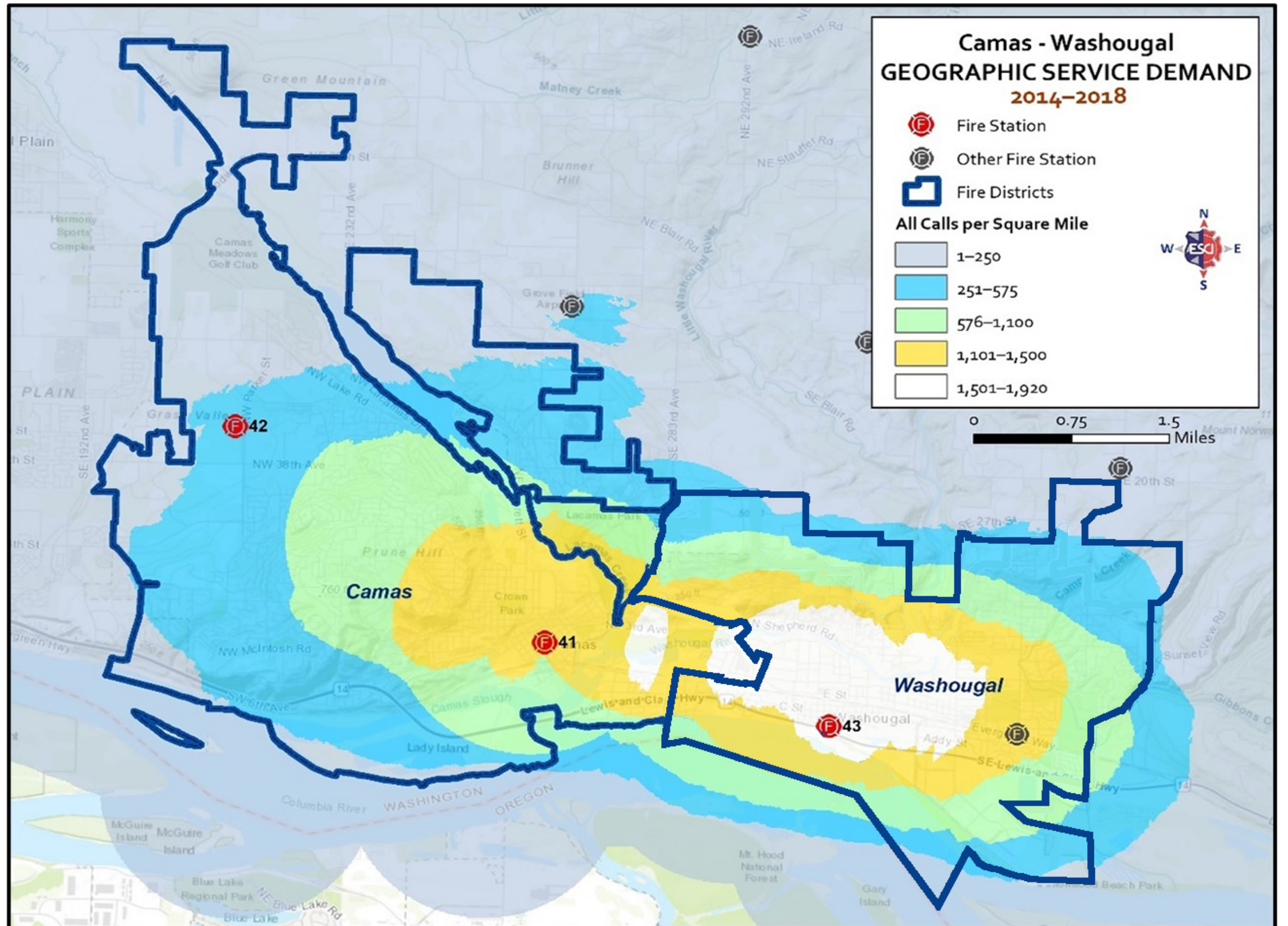
TRAVEL TIME COVERAGE

- Full page view of the 4-minute and 8-minute travel time map



INCIDENT LOCATION DENSITY

- Full page view of Figure 2 – the Incident Location Density



FINDINGS

- Most growth occurs outside the existing fire station urban coverage reach
- The cities and Department should adopt a split coverage measure
 - Faster response in existing built-up areas
 - Longer response times in edge suburban and rural areas
- Added stations occur when the other areas substantially develop

EXISTING STATIONS



HEADQUARTERS STATION 41

Address: 616 NE 4th Avenue
Camas, WA 98607

Built in: 1960's; subsequent remodels

Deficiencies:

- No future growth opportunities
- No dedicated training room
- Does not meet seismic code for an essential facility
- Does not meet current ADA code requirements

NATIONAL FIRE PROTECTION ASSOCIATION STANDARDS

NFPA SECTION	DESCRIPTION	COMPLIANCE
NFPA 1	Fire Suppression Sprinklers	Yes
NFPA 1221	Station Alerting Communication System	No
NFPA 1500	Smoke Detectors Carbon Monoxide Detectors	Yes Yes
NFPA 1581	Minimum Sleeping Area PPE Cleaning Area EMS Decontamination Area	No No No
NFPA 1851	Turnout Gear Storage UV Exposure Thermal Exposure	No No No
NFPA 1962	Fire Hose Storage and Maintenance	No

WASHINGTON ADMINISTRATIVE CODE

WAC SECTION	DESCRIPTION	COMPLIANCE
296-305-06507	1 hour separation between Apparatus Bay and Living Quarters	No
296-305-06509	Apparatus Bay Configuration and Clearance	No
296-305-06515	Hose Tower Configuration	No
296-305-06511	Indoor Air Quality	No



SATELLITE STATION 42

Address: 4321 NW Parker Street
Camas, WA 98607

Built in: 2001

Deficiencies:

- No direct exhaust capture system

NATIONAL FIRE PROTECTION ASSOCIATION STANDARDS

NFPA SECTION	DESCRIPTION	COMPLIANCE
NFPA 1	Fire Suppression Sprinklers	Yes
NFPA 1221	Station Alerting Communication System	Yes
NFPA 1500	Smoke Detectors Carbon Monoxide Detectors	Yes Yes
NFPA 1581	Minimum Sleeping Area PPE Cleaning Area EMS Decontamination Area	Yes Yes Yes
NFPA 1851	Turnout Gear Storage UV Exposure Thermal Exposure	Yes Yes Yes
NFPA 1962	Fire Hose Storage and Maintenance	Yes

WASHINGTON ADMINISTRATIVE CODE

WAC SECTION	DESCRIPTION	COMPLIANCE
296-305-06507	1 hour separation between Apparatus Bay and Living Quarters	Yes
296-305-06509	Apparatus Bay Configuration and Clearance	Yes
296-305-06515	Hose Tower Configuration	Yes
296-305-06511	Indoor Air Quality	No



SATELLITE STATION 43

Address: 1400 A Street
Washougal, WA 98671

Built in: 1974

Deficiencies:

- No future growth opportunities
- Does not meet seismic code for an essential facility
- Does not meet current ADA code requirements

NATIONAL FIRE PROTECTION ASSOCIATION STANDARDS

NFPA SECTION	DESCRIPTION	COMPLIANCE
NFPA 1	Fire Suppression Sprinklers	No
NFPA 1221	Station Alerting Communication System	No
NFPA 1500	Smoke Detectors Carbon Monoxide Detectors	Yes Yes
NFPA 1581	Minimum Sleeping Area PPE Cleaning Area EMS Decontamination Area	No No No
NFPA 1851	Turnout Gear Storage UV Exposure Thermal Exposure	No No No
NFPA 1962	Fire Hose Storage and Maintenance	No

WASHINGTON ADMINISTRATIVE CODE

WAC SECTION	DESCRIPTION	COMPLIANCE
296-305-06507	1 hour separation between Apparatus Bay and Living Quarters	No
296-305-06509	Apparatus Bay Configuration and Clearance	No
296-305-06515	Hose Tower Configuration	No
296-305-06511	Indoor Air Quality	No

RECOMMENDATIONS

- Washougal Fire Station 43 will need to be replaced to meet current needs in the next two to three years.
- Ideally Camas Headquarters Station 41 could be moved to the west to shorten the coverage gap between it and Station 42.
- Camas Station 42 to remain in its current location and renovated in the next five to nine years.
- A brand new satellite station is required in the NW corner of Camas in the next five years. Another satellite station will be required midway down the north side of Lacamas Lake within the next nine years, for a total of two new satellite stations for Camas in the next five to nine years.
- Washougal will need add at least one, if not two more, fire stations at some point in the 2030s.

Space / Room Use	Staffing Requirements			Space Requirements			Space Size			Room Type	Total Required Square Footage			Comments
	Exist	2021	2061	Exist	2021	2061	W	L	Area		Exist	2021	2061	
Department: Camas Washougal Fire Headquarters Station														
Apparatus Bay and Support Rooms	0	0	0								0	7658	7658	
Living Quarters and Administration	14	14	14								0	6642	6642	
Community / Training Rooms	0	0	0								0	1913	1913	
SUBTOTAL	14	14	14								0	16213	16213	
GENERAL CIRCULATION (20%)											0	3243	3243	
TOTAL BUILDING SQUARE FOOTAGE	14	14	14								0	19456	19456	0.45
TOTAL EXTERIOR REQUIREMENTS												14460	14460	0.33
TOTAL SITE REQUIREMENTS											0	33916	33916	0.78

Space / Room Use	Staffing Requirements			Space Requirements			Space Size			Room Type	Total Required Square Footage			Comments
	Exist	2021	2061	Exist	2021	2061	W	L	Area		Exist	2021	2061	
Department: Camas Washougal Fire Satellite Station(s)														
Apparatus Bay and Support Rooms	0	0	0								0	5526	5526	
Living Quarters and Administration	8	8	8								0	4402	4402	
Community / Training Rooms	0	0	0								0	1031	1031	
SUBTOTAL	8	8	8								0	10959	10959	
GENERAL CIRCULATION (20%)											0	2192	2192	
TOTAL BUILDING SQUARE FOOTAGE	8	8	8								0	13151	13151	0.30
TOTAL EXTERIOR REQUIREMENTS												7980	7980	0.18
TOTAL SITE REQUIREMENTS											0	21131	21131	0.49

Fire Stations required in the next 8 - 10 years:

- **Replace Washougal Station 43** - in the next two to three years.
- **Replace HQ Station (Station 41)** - in the next two to three years.
- **Future Brand New Satellite Station in Camas (NE)** - when the future infrastructure is assumed to be in the 5-9 year period.

	Building SF	Lowest Bid (Without Tax)	Cost Per SF
VFD Station 02 (July 2016)	13,367 SF	\$5,052,739.17	\$378.00/SF
VFD Station 11 (March 2021)	14,789 SF	\$7,120,393.59	\$481.46/SF
Station 61	20,750 SF	\$8,051,854	\$388.04 / SF
Station 61 Shop	7,425 SF	\$3,074,759	\$414.08 / SF
Averages	14,083 SF	\$5,824,936.44	\$413.61 / SF

Cost Factors:

- 8.5% Tax (As of April 2021)
- Median Bid - \$504/SF
- 27% Increase (Normally 30-35%)
- Additional Site Work

Camas-Washougal Capital Improvement Plan - Project Cost Summary

<i>Rev. 09/22/2021</i>		
	<i>Headquarters Station</i>	<i>Satellite Station</i>
Construction Cost:	19,456 SF x \$500-\$550 / SF = \$9,728,000 - \$10,700,800	13,151 SF x \$500 - 550 / SF = \$6,575,500 - \$7,233,050
Consultant Costs (Geotechnical Engineer; Surveyor; Architect and Engineering Fee etc.)	30% of Construction Cost: = \$2,918,400 - \$3,210,240	30% of Construction Cost: = \$1,972,650 - \$2,169,915
Owner Costs (Permit and SDC Fees, Furniture and Fixtures etc.)		
Total Project Cost:	\$12,646,400 - \$13,911,040	\$8,548,150 - \$9,402,965

Existing Apparatus Assessment (Based on Master Plan):

- Well maintained, but aging
- Three out of the four front line engines are at the end of their normal lifespan of a fire engine and are typically recommended to be put in a reserve status
- Accumulation of high mileage
- Updated technology with integration with tap out system

Fire Department's Replacement Vehicles In The Next 10 Years:

- **(4) Four Engines - ea @ \$735,000**
- **(1) A Ladder Truck - one @ \$1,050,000**
- **(4) Four Rescue Tools - ea @ \$40,000**
- **(2) Two Brush Rigs - ea @ \$150,000**

Q&A

MACKENZIE.

833.317.9051 | mcknze.com

Architecture · Interiors · Structural Engineering · Civil Engineering
Land Use Planning · Transportation Planning · Landscape Architecture

Copyright © 2022 Mackenzie, All Rights Reserved.