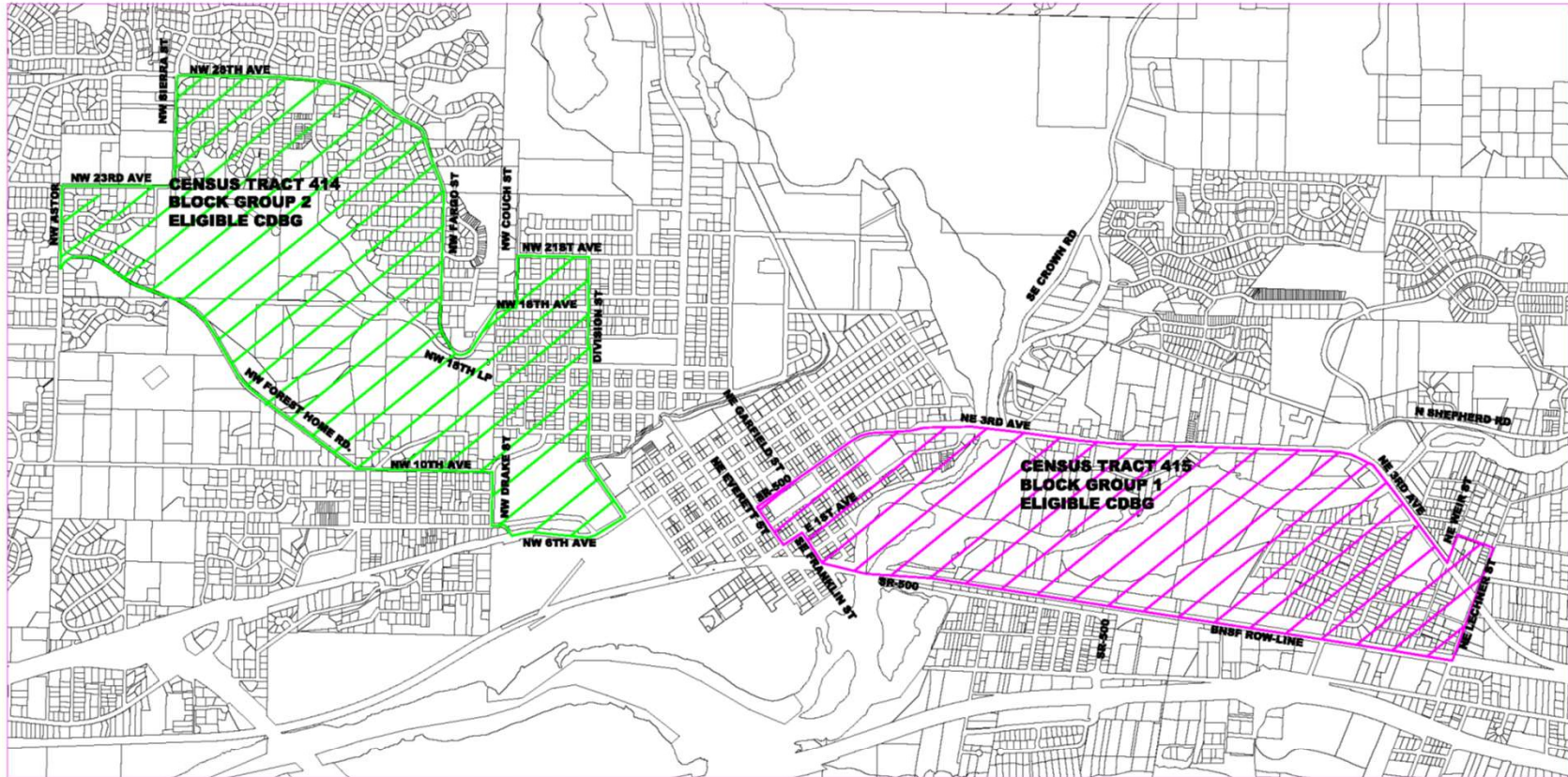


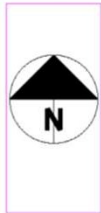
2022 COMMUNITY DEVELOPMENT BLOCK GRANT (CDBG) APPLICATION



ELIGIBLE CDBG NEIGHBORHOODS-CAMAS 2019



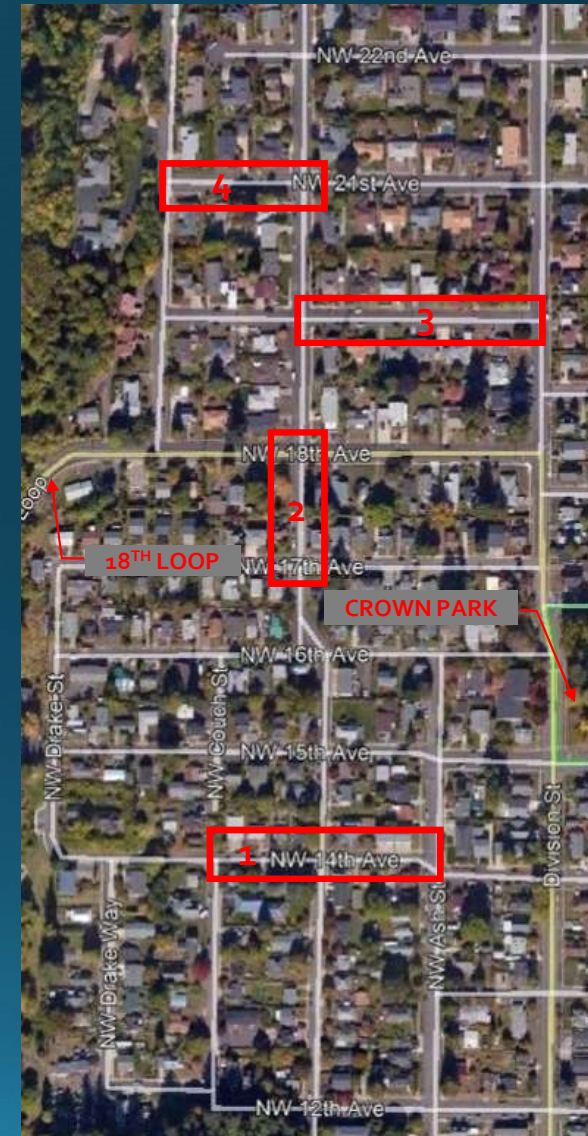
CENSUS TRACT 414 BLOCK GROUP 2 2019 INFO:
 GEO ID: 530110414002
 TRACT & BLOCK GROUP: 414002
 POPULATION OFM: 2476.810033
 HOUSING UNITS FROM GIS: 953
 TOTAL POPULATION: 2306
 MEDIAN AGE: 38.6 (FEMALE=40.6, MALE= 36.2)
 POPULATION AGE 65+: 312
 POPULATION AGE 65+ AS % = 13.53



CENSUS TRACT 415 BLOCK GROUP 1 2019 INFO:
 GEO ID: 530110415001
 TRACT & BLOCK GROUP: 415001
 POPULATION OFM: 1008.379998
 HOUSING UNITS FROM GIS: 434
 TOTAL POPULATION: 1037
 MEDIAN AGE: 36.7 (FEMALE=38.3, MALE= 34.6)
 POPULATION AGE 65+: 165
 POPULATION AGE 65+ AS % = 15.91

POTENTIAL 2022 CDBG PROJECTS

OPTION	STREET	PROJECT LIMITS	CDBG FUNDING	CITY FUNDING	FUNDING SOURCE	TOTAL COST	MATCH POINTS
1	NW 14 TH AVE	NW COUCH ST TO NW ASH ST	\$212,000	\$180,000	WATER FUND	\$392,000	9
2	NW BENTON ST	NW 17 TH AVE TO NW 18 TH AVE	\$147,000	\$100,000	WATER FUND	\$247,000	8
3	NW 19 TH AVE	NW BENTON ST TO DIVISION ST	\$219,000	\$181,000	WATER FUND	\$400,000	9
4	NW 21 ST AVE	NW COUCH ST TO NW BENTON ST	\$138,000	\$35,000	GENERAL FUND	\$173,000	2





NW 14TH AVE. AT NW ASH ST. LOOKING WEST



NW 14TH AVE. AT NW ASH ST. LOOKING WEST



NW 14TH AVE. AT NW ASH ST. LOOKING WEST



NW 14TH AVE. AT NW BENTON ST. LOOKING WEST



NW BENTON ST. AT NW 18TH AVE. LOOKING SOUTH



NW BENTON ST. AT NW 18TH AVE. LOOKING SOUTH



NW BENTON ST. AT NW 17TH AVE. LOOKING WEST



NW BENTON ST. LOOKING SOUTH TOWARDS NW 17TH AVE.



NW 19TH AVE. LOOKING WEST TOWARDS NW BENTON ST.



NW 19TH AVE. LOOKING WEST TOWARDS NW BENTON ST.



NW 19TH AVE. LOOKING EAST TOWARDS DIVISION ST.



NW 19TH AVE. LOOKING EAST TOWARDS DIVISION ST.



NW 21ST AVE. AT NW COUCH ST. LOOKING EAST



NW 21ST AVE. AT NW BENTON ST. LOOKING WEST



NW 21ST AVE. LOOKING WEST



NW 21ST AVE. LOOKING EAST