



FRONT OVERVIEW



FRONT-LEFT VIEW



FRONT BUILDING VIEW



FRONT-RIGHT VIEW

FLANSBURG ENGINEERING
Commercial and Residential Engineering Services

510 SE 329th Ave
Washougal, WA 98671

SCALE: 1/4"=1'-0"

DATE: 08/11/2022

REVISIONS:

1		
2		
3		

Lacamas Counseling Center
#74 & #88 Geo Morrow DLC .40; Clark County #163521000
3631 NE Everett Street, Camas, WA 98607
Gecho Construction Inc.

ARCHITECTURAL RENDERINGS

Project No. 21043

A1

FLANSBURG ENGINEERING
 Commercial and Residential Engineering Services

510 SE 329th Ave
 Washougal, WA 98671

SCALE: 1/4"=1'-0"

DATE: 08/11/2022

REVISIONS:

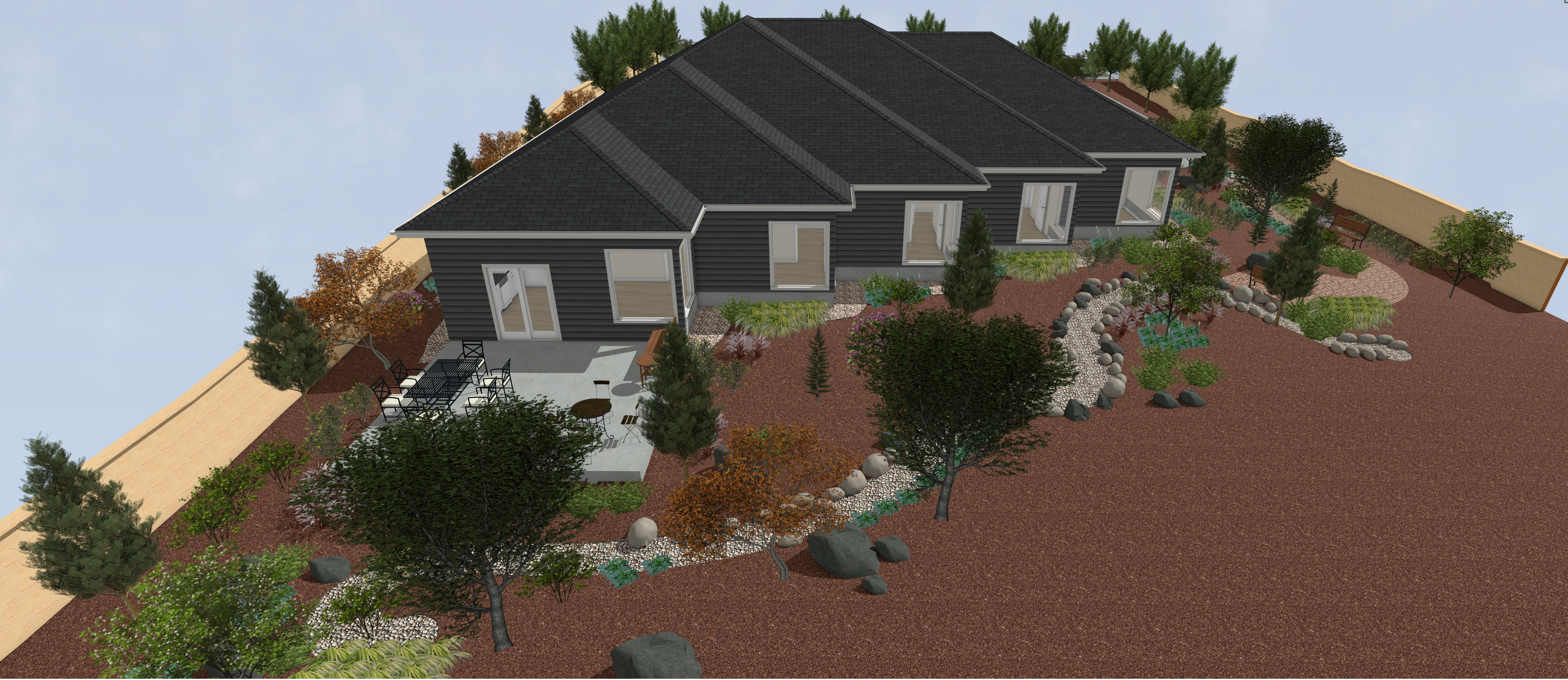
1		
2		
3		

Lacamas Counseling Center
 # 74 & # 88 Geo Morrow DLC .40; Clark County # 163521000
 3631 NE Everett Street, Camas, WA 98607
 Gecho Construction Inc.

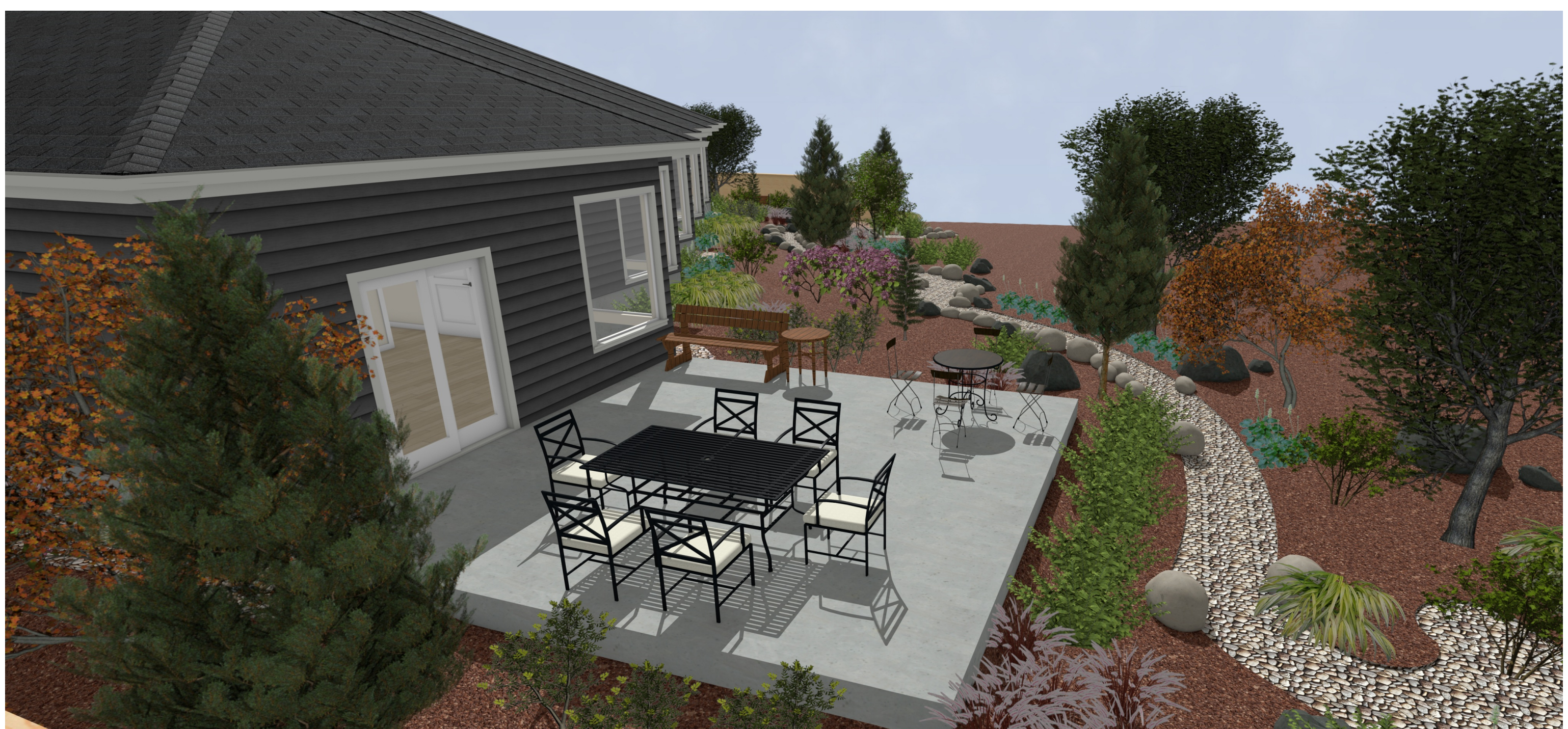
ARCHITECTURAL ELEVATIONS

Project No. 21043

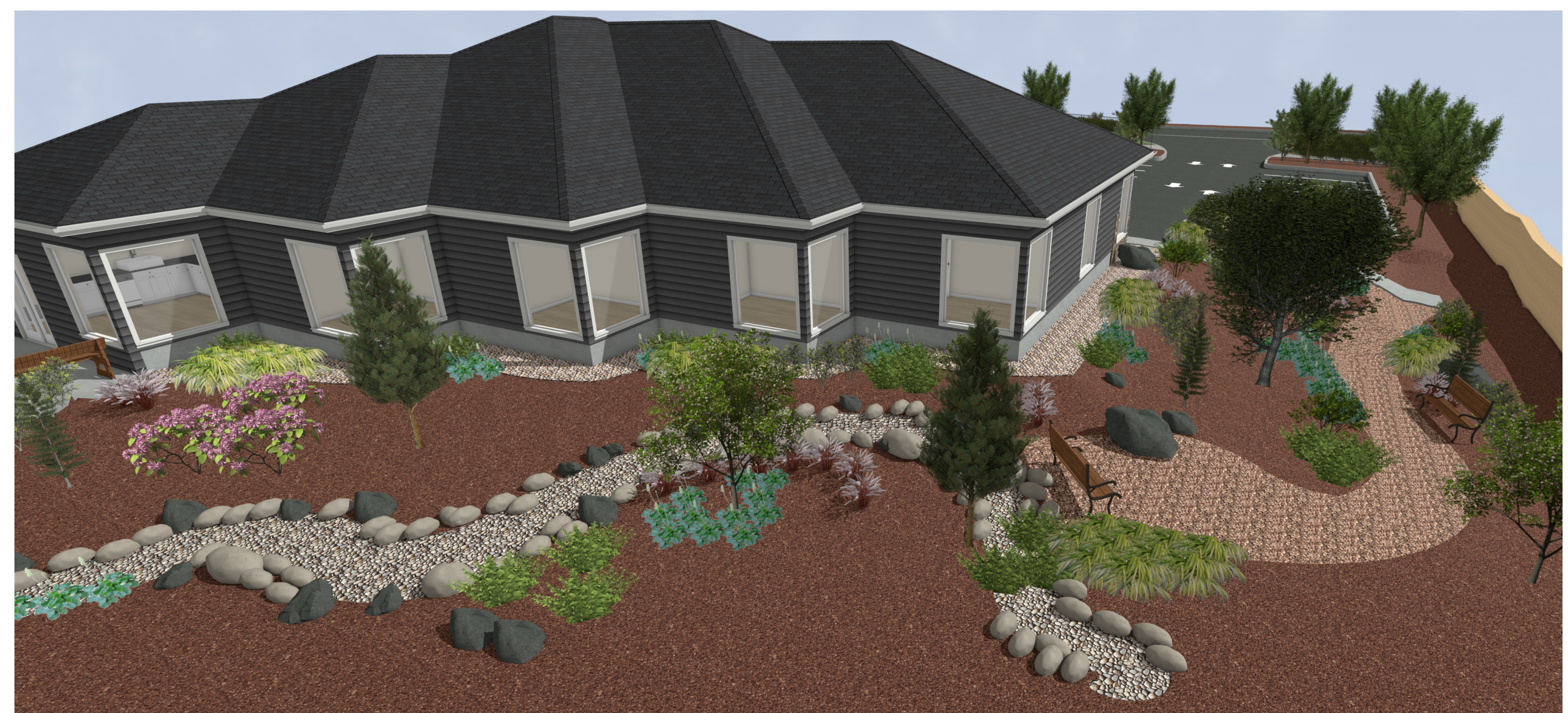
A2



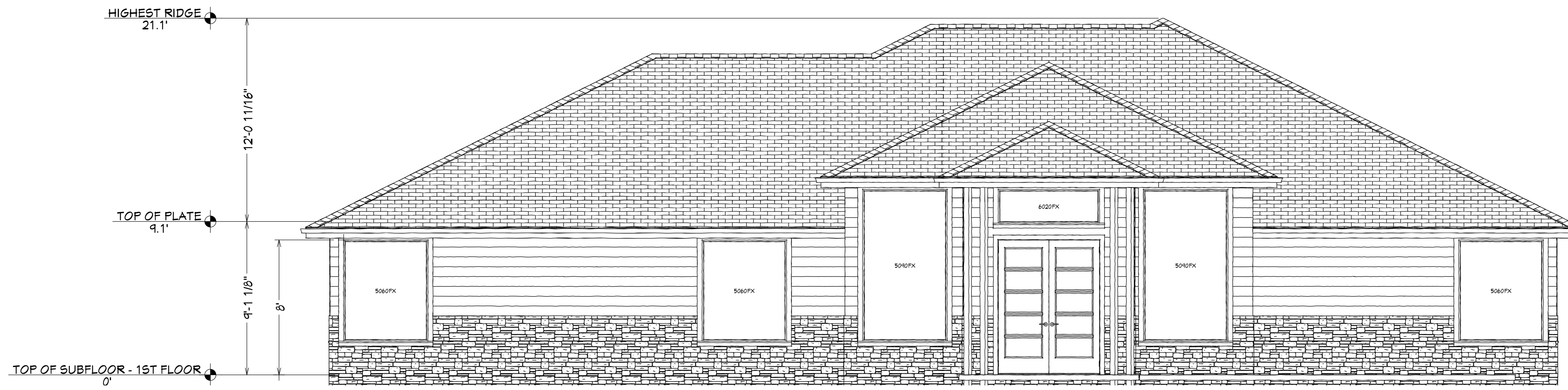
REAR OVERVIEW



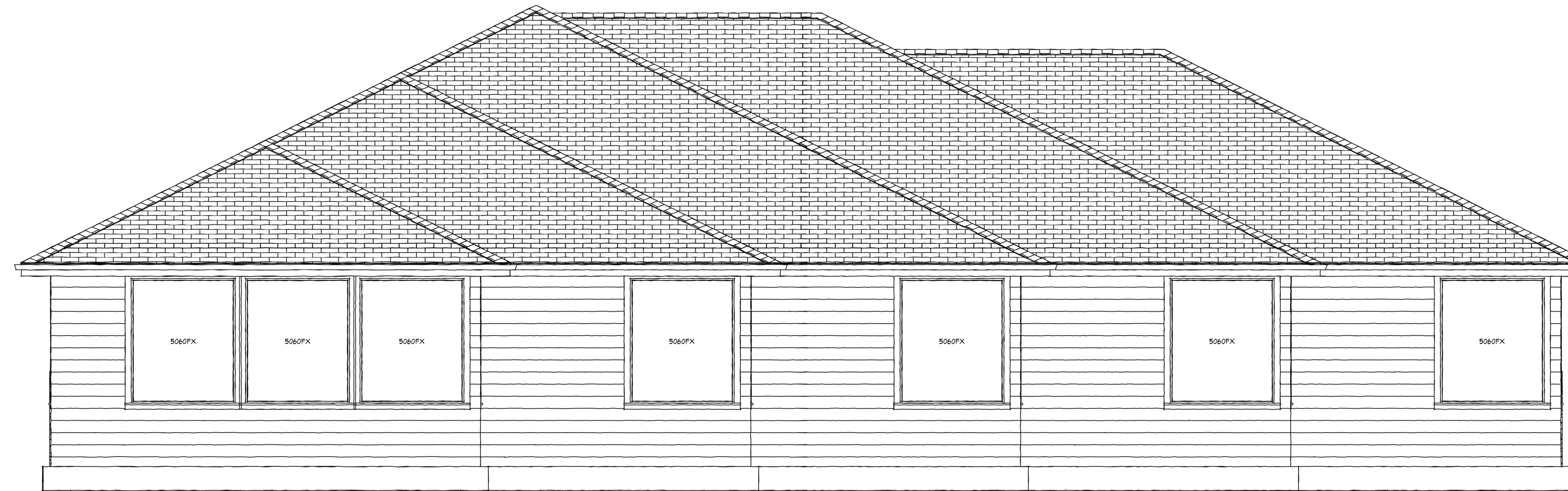
REAR PATIO VIEW



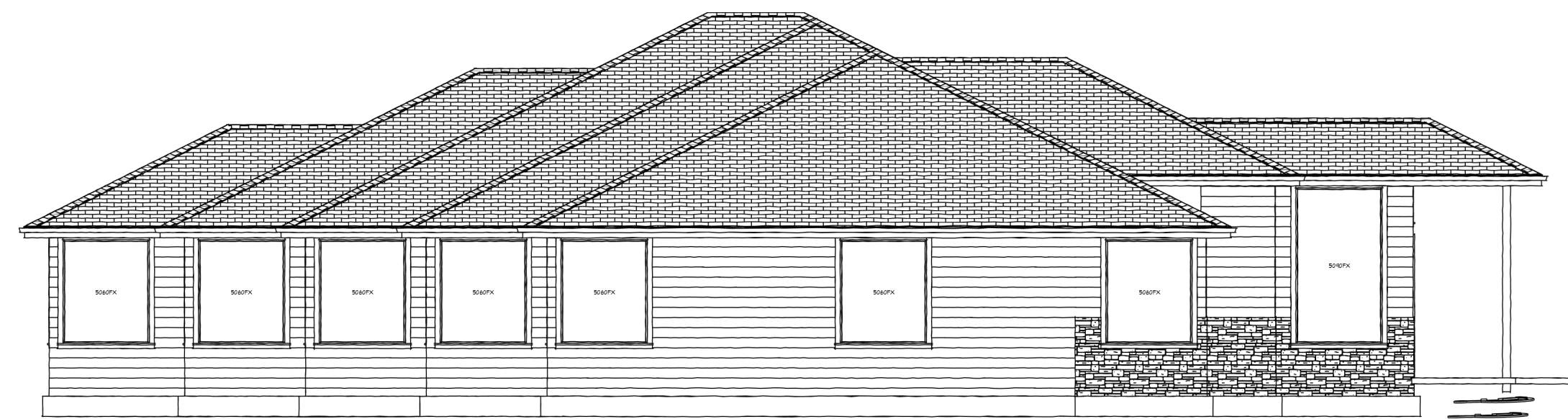
REAR-RIGHT VIEW



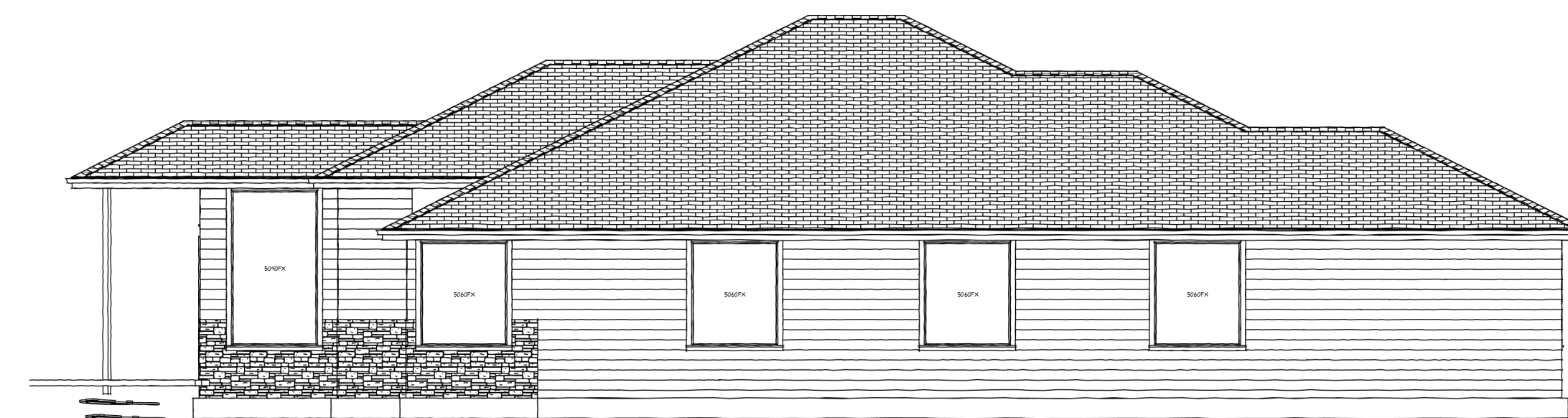
FRONT ELEVATION



REAR ELEVATION



LEFT ELEVATION



RIGHT ELEVATION

FLANSBURG ENGINEERING
Commercial and Residential Engineering Services

510 SE 329th Ave
Washougal, WA 98671

SCALE: 1/4" = 1'-0"

DATE: 08/11/2022

REVISIONS:

1		
2		
3		

Lacamas Counseling Center
#74 & #88 Geo Morrow DLC .40; Clark County #163521000
3631 NE Everett Street, Camas, WA 98607
Gecho Construction Inc.

ARCHITECTURAL ELEVATIONS

Project No. 21043

A3