

# MCNELEY ANNEXATION

---

10% Notice of Intent

Staff: Robert Maul, Planning Manager



Camas

NE 43rd Ave

SE 15th St

NE 42nd Cir

NE 11th St

178102000

SE 270th Pl

SE 274th Ct

NE 41st Ave

SE 273rd Ave

NE 40th Cir

NE 10th St

986030316

NE 39th Ct

NE 38th Ave

NE Woodburn Dr

NE 9th St

NE 37th Ave

NE 8th St

NE 37th Ave

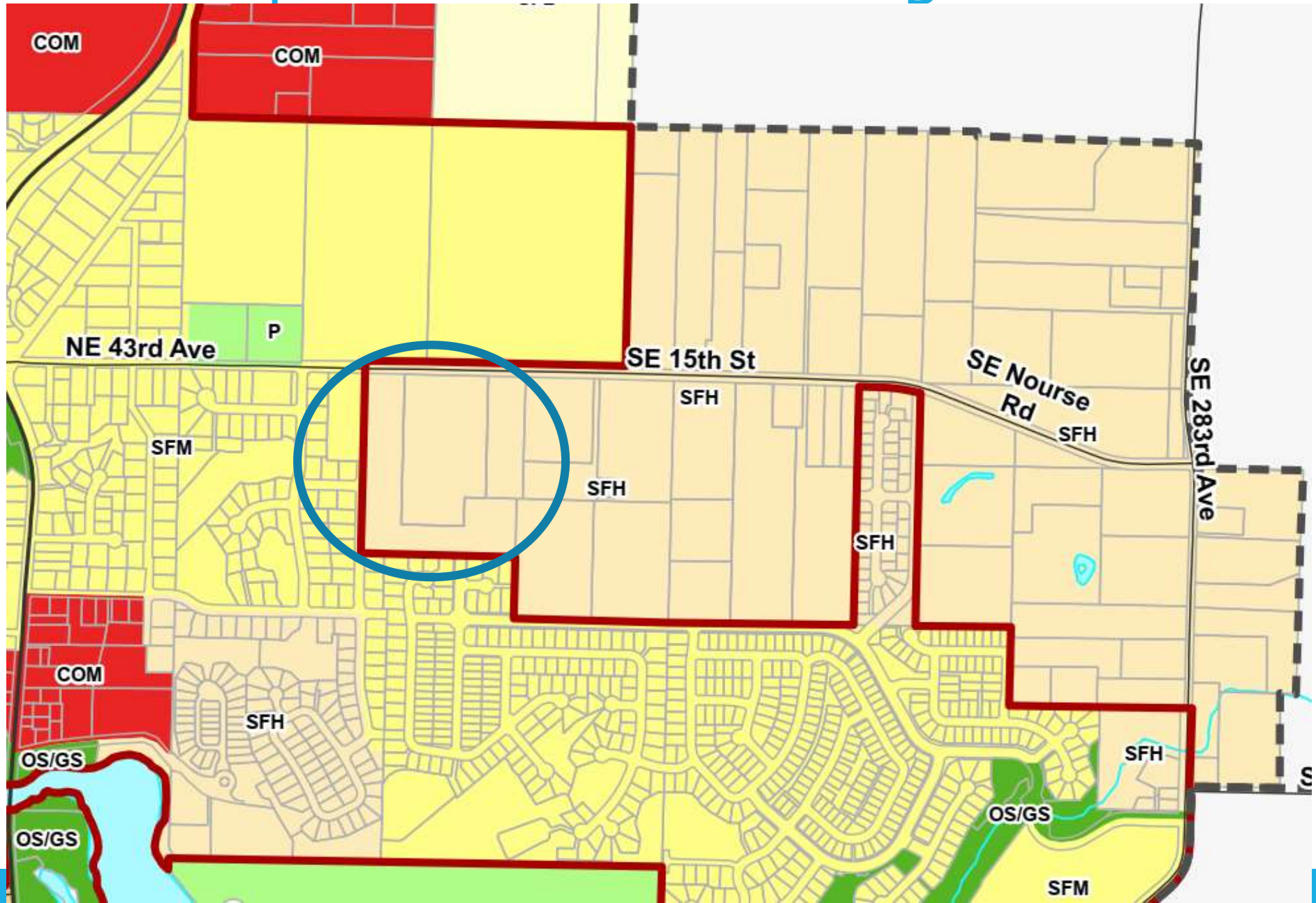


1:4,514





# Comprehensive Plan Designation



# Zoning Designation

