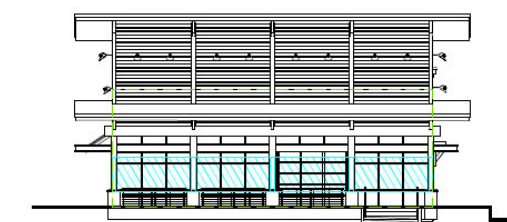


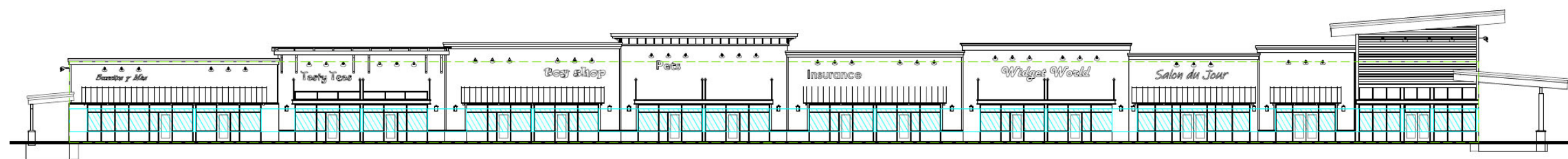


76'-0" AREA 1813.50 SQ. FT. 1813.50 SQ. FT. (GLAZING + 40% GLAZING)  
76'-0" AREA 1813.50 SQ. FT. 1813.50 SQ. FT. (GLAZING + 40% GLAZING)

**1 WEST ELEVATION**  
1/16" = 1'-0"

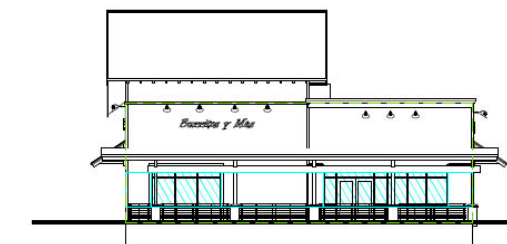


1813.50 SQ. FT. 1813.50 SQ. FT. (GLAZING + 40% GLAZING)  
**2 NORTH ELEVATION**  
1/16" = 1'-0"



1813.50 SQ. FT. 1813.50 SQ. FT. (GLAZING + 40% GLAZING)

**3 EAST ELEVATION**  
1/16" = 1'-0"



1813.50 SQ. FT. 1813.50 SQ. FT. (GLAZING + 40% GLAZING)  
**4 SOUTH ELEVATION**  
1/16" = 1'-0"

OAK TREE STATION