

P050

Project: 2021004SP
 Date: 5/17/2022
 Drafted: NVS
 Designed: PCW
 Page: 6 of 9

Northwest Utilities
1-800-425-5555
 "It's the law"
 Call 48 hours before you dig.

Revisions

Site Information

Address: No site address assigned
 Abbrev. Desc: #16 SEC 29 T2N R3EWM 3.95A
 S-T-R: SE 1/4 S29 T2N R3E W.M.
 Parcel: 176162000
 Area: 3.59 AC (156,287± SF)
 Zone: CC

Boundary & Topography

Property boundaries shown herein are taken from 2009 record of survey by Olson Engineering, Inc. filed in Book 60, Page 66, of Surveys. Adjacent property boundaries, where shown, are approximate only. Topographic survey performed by Engineering Northwest in 2022.

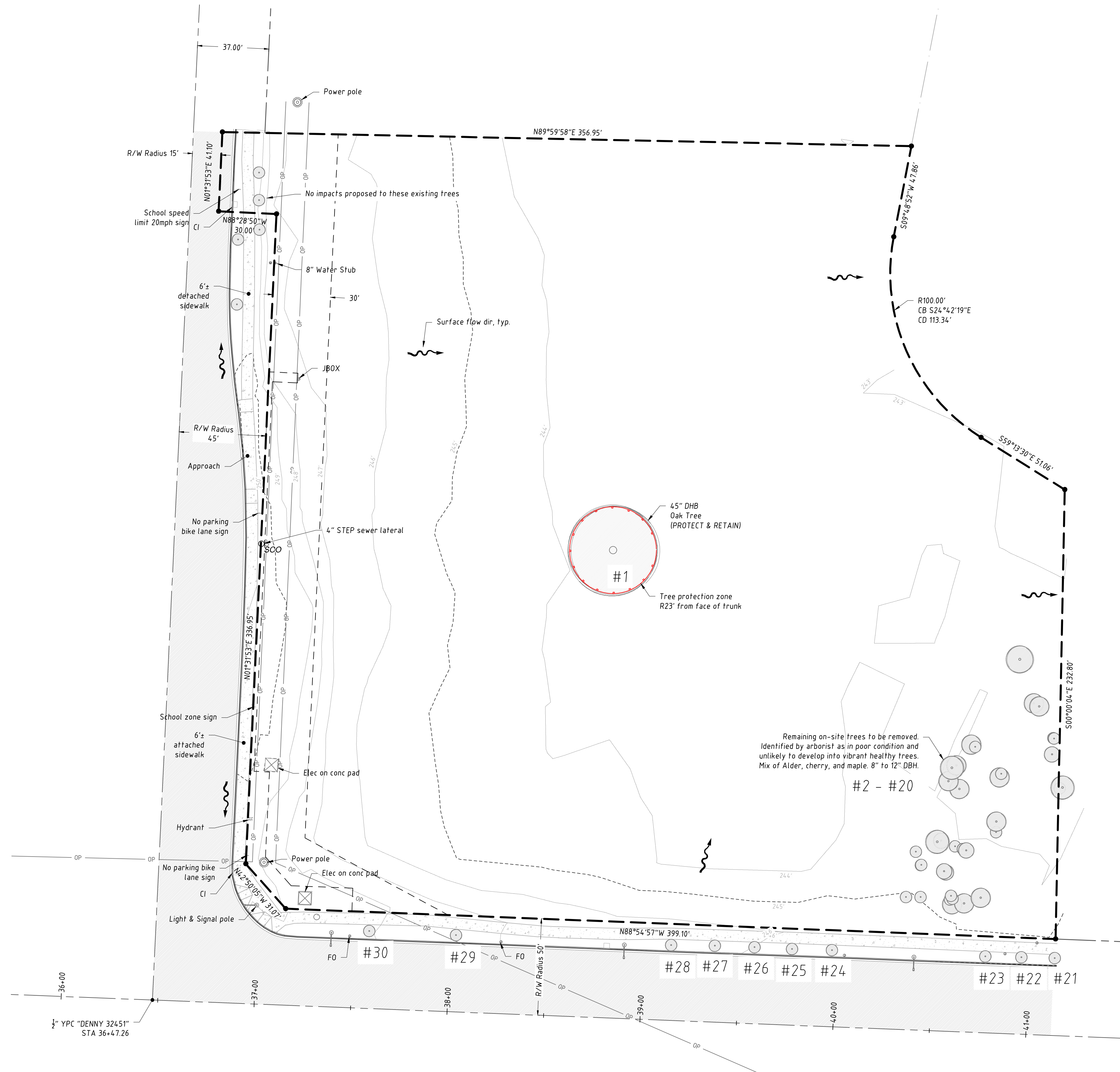
Notes

Consultation by an ISA Certified Arborist performed by Jerry Hofer on March 19, 2022. Recommendations of the arborist shall be followed.

Existing Tree Table

ID #	DBH (inch)	Species	Condition	Retain / Remove	Tree Units	Retained Units
1	45	Oregon White Oak	Fair	Retain	19	19
2	12	Alder	Good	Remove	2	-
3	11	Alder	Good	Remove	2	-
4	12	Cherry	Poor	Remove	2	-
5	8	Maple	Poor	Remove	2	-
6	8	Maple	Fair	Remove	2	-
7	8	Cherry	Poor	Remove	2	-
8	8	Alder	Poor	Remove	2	-
9	8	Cherry	Fair	Remove	2	-
10	8	Cherry	Fair	Remove	2	-
11	12	Cherry	Good	Remove	2	-
12	9	Alder	Fair	Remove	2	-
13	8	Alder	Poor	Remove	2	-
14	11	Alder	Poor	Remove	2	-
15	12	Alder	Good	Remove	2	-
16	12	Alder	Poor	Remove	2	-
17	9	Alder	Poor	Remove	2	-
18	10	Alder	Fair	Remove	2	-
19	12	Alder	Good	Remove	2	-
20	11	Alder	Good	Remove	2	-
21	6	Columnar Oak	Good	Retain	2	(street)
22	6	Columnar Oak	Good	Retain	2	(street)
23	8	Columnar Oak	Good	Retain	2	(street)
24	6	Columnar Oak	Good	Retain	2	(street)
25	7	Ash	Good	Retain	2	(street)
26	7	Ash	Good	Retain	2	(street)
27	8	Ash	Good	Retain	2	(street)
28	7	Ash	Good	Retain	2	(street)
29	3	Columnar Oak	Top dead	Replace	1	(street)
30	4	Columnar Oak	Good	Retain	1	(street)

19
 3.59ac x 20 u/ac = 72 tree units
 53 additional tree units req'd



Preliminary Tree Removal & Protection Oak Tree Station



ENGINEERING NORTHWEST
 CONSULTING ENGINEERS & PLANNERS
 6168 NE HWY 99 STE 100, VANCOUVER 98665
 (360) 931-3122