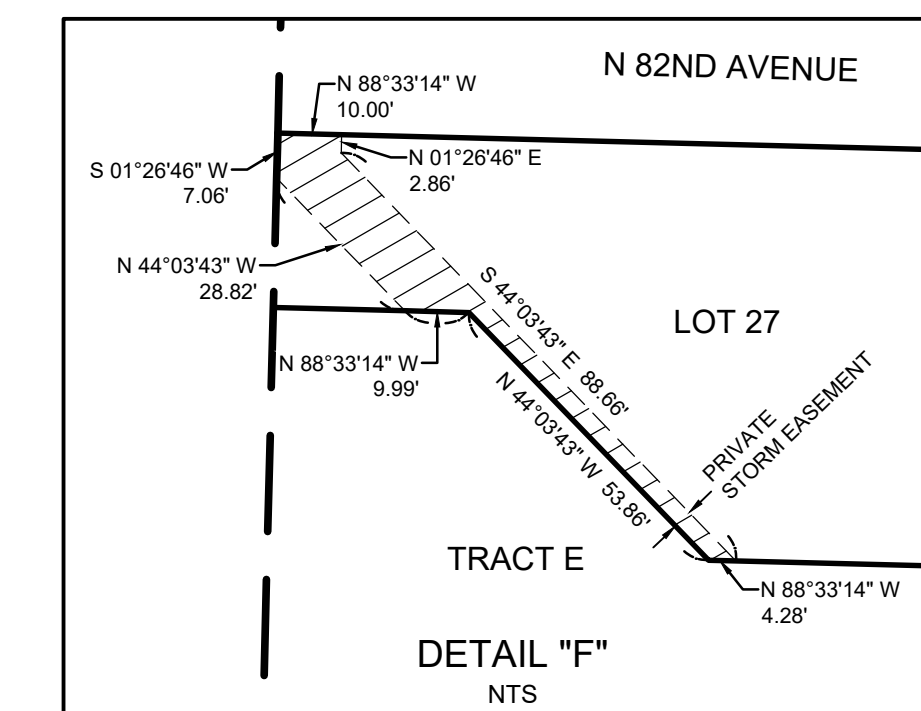
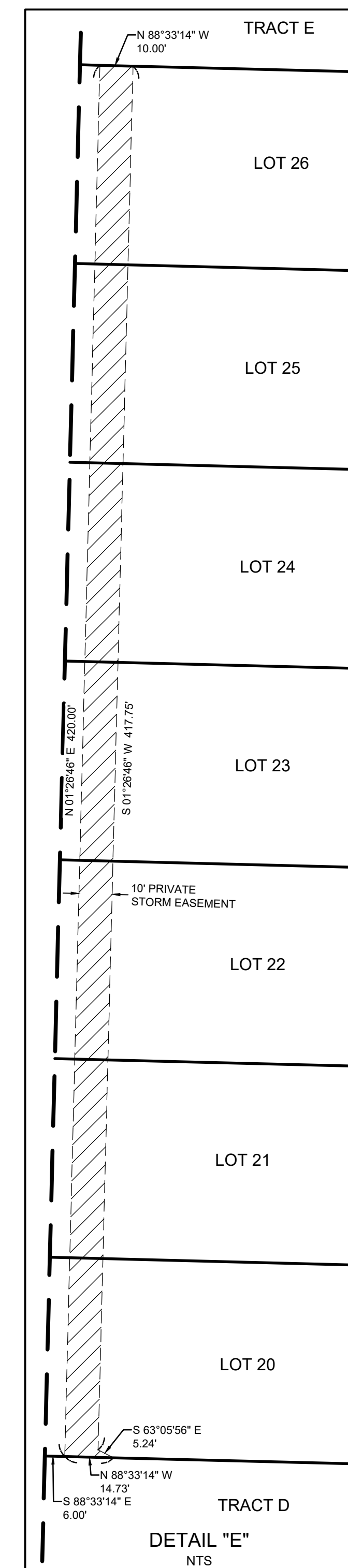
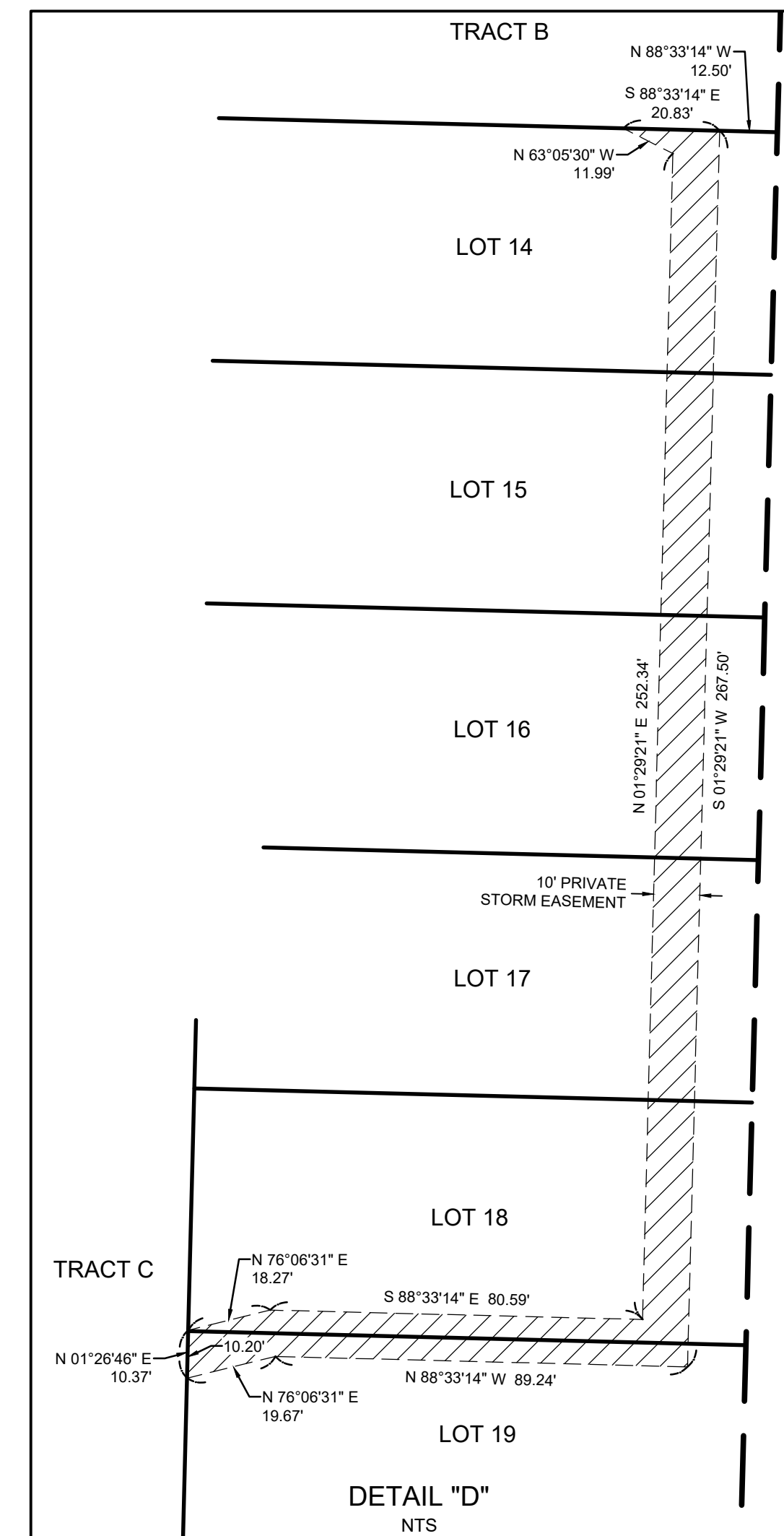
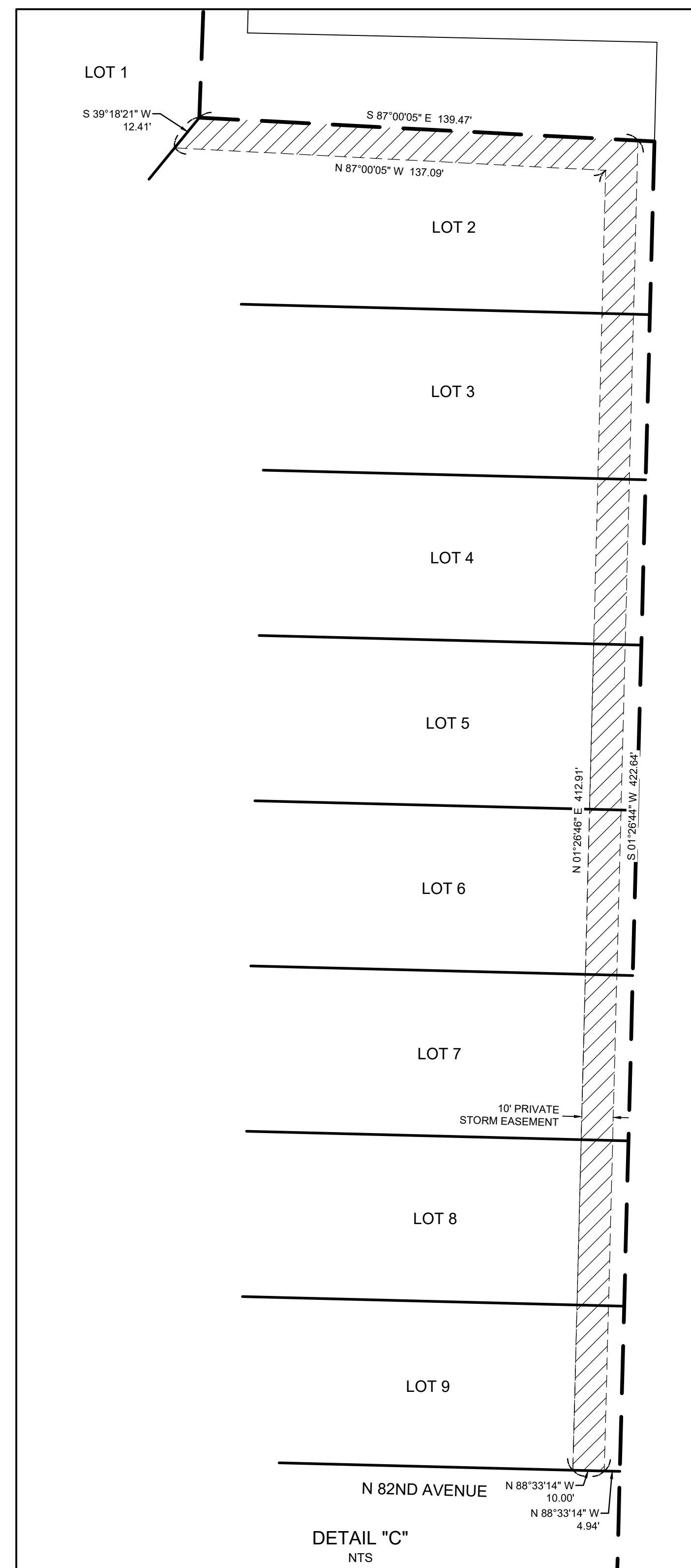


THE LANDING AT GREEN MOUNTAIN SUBDIVISION
(PRELIMINARILY APPROVED AS MONTE VERDE SUBDIVISION)
IN THE NW 1/4 OF THE SE 1/4 OF SECTION 21,
T. 2 N., R. 3 E., W.M.
CITY OF CAMAS
CLARK COUNTY, WASHINGTON

JOB NO: 3382
DRAWING DATE: 10-03-2024
SHEET 3 OF 3
CITY FILE NUMBER: SUB22-05



LEGEND:
NTS INDICATES NOT TO SCALE

