



PROS Plan – Planning Commission

Joint Work Session: September 21, 2021



What is the PROS Plan?

The Parks, Recreation & Open Space (PROS) Plan is a 6-year guide and strategic plan for managing and enhancing parks, open space, trails, and recreation opportunities for the Camas community.*

- *Policy & Strategy Guide*
- *Capital Planning Tool*
- *Communications Tool*

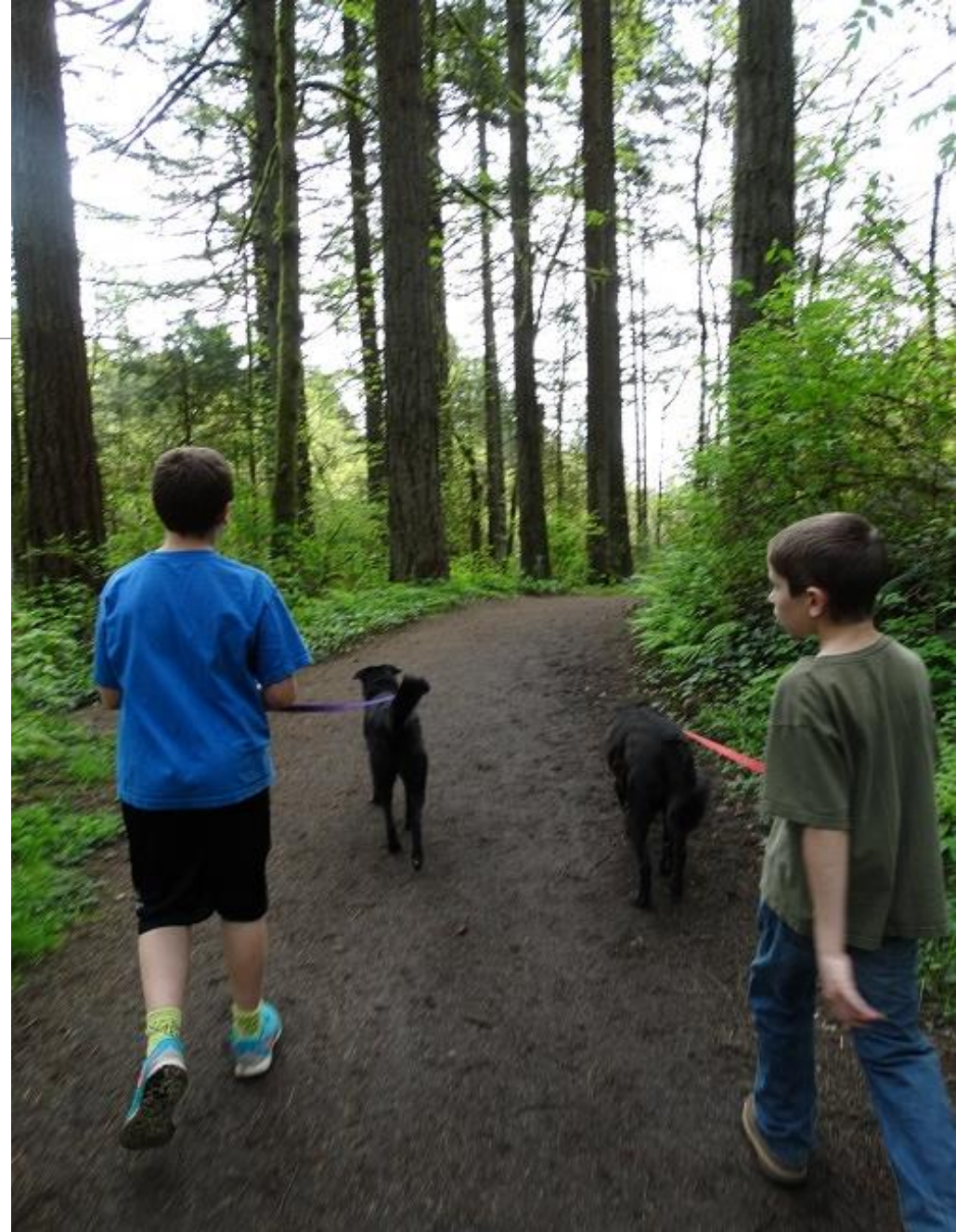
*The last plan was adopted in 2014.



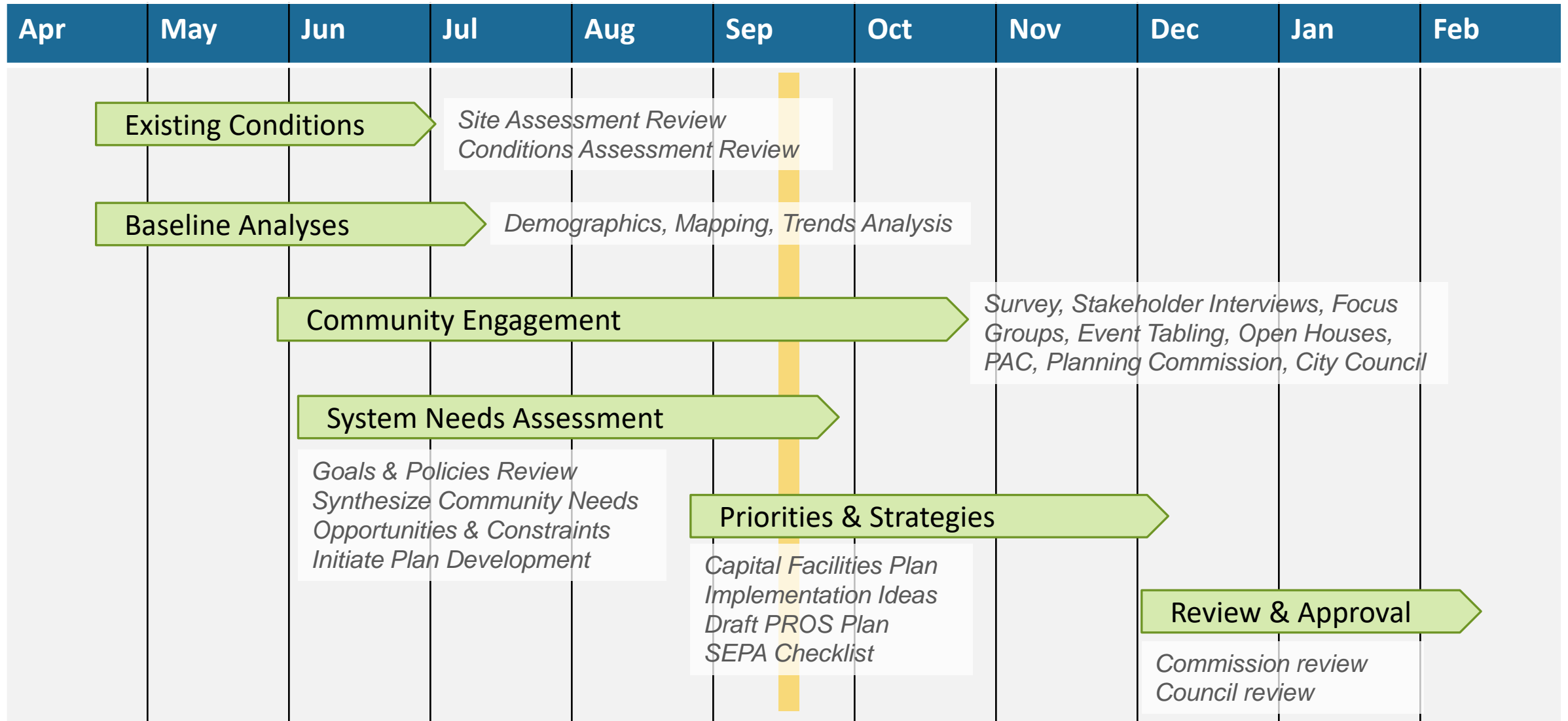
What is the PROS Plan?

Steps to Building the Plan

- Community Engagement
- Inventory Site Assessments
- Goals & Policies Review
- System-wide Needs Assessment
- Capital Project Planning
- Implementation & Funding Strategies
- Plan Review & Approval



Project Timeline



Community Engagement

Robust & COVID-sensitive Outreach

- Survey (random-sample mail, plus online)
- Online open house on priorities
- Topic-oriented stakeholder group discussions
- Event tabling
- Engage Camas, online & social media
- Virtual public meeting
- Significant P&R Commission guidance
- Multiple City Council touch points



Survey Highlights

Methodology

- Designed in coordination with staff
- Late May to early July 2021
- Mailed to 2,500 randomized addresses
- 509 respondents (20% response rate)
- Online survey available to entire community in English & Spanish (876)



Dear Camas Resident:

The City of Camas is beginning a community-led process to update its citywide Recreation, Parks and Open Space Plan (PROS Plan, for short). We need your help to determine how to prioritize projects and what we should focus on to keep our parks and programs thriving for the next 6-10 years. As an initial step, the City is conducting this short survey to assess the community's recreation needs. We understand that COVID-19 has impacted your ability to participate in programs and visit parks this year. We ask that you consider needs for the future as you evaluate recreation amenities. Your opinions are important to the City.



The survey has 16 questions and will only take a few minutes to complete. Use the QR code to take this survey online at <https://www.surveymonkey.com/r/CamasPROS>

1. When you think about what contributes to the quality of life in Camas, would you say that public parks and recreation opportunities are... (CHECK ONE OPTION)

- Essential to the quality of life here
- Important, but not really essential
- Useful, but not necessary
- Not important
- Don't know

2. When it comes to amenities provided by the City of Camas for meeting your needs for parks, trails and recreation facilities, would you say there are... (CHECK ONLY ONE BOX IN EACH ROW)

	More than Enough	About the Right Amount	Not Enough	Don't Know
	<input type="checkbox"/>	<input type="checkbox"/>	<input type="checkbox"/>	<input type="checkbox"/>
	<input type="checkbox"/>	<input type="checkbox"/>	<input type="checkbox"/>	<input type="checkbox"/>
	<input type="checkbox"/>	<input type="checkbox"/>	<input type="checkbox"/>	<input type="checkbox"/>
	<input type="checkbox"/>	<input type="checkbox"/>	<input type="checkbox"/>	<input type="checkbox"/>
	<input type="checkbox"/>	<input type="checkbox"/>	<input type="checkbox"/>	<input type="checkbox"/>
Community events (such as the movies in the Park)	<input type="checkbox"/>	<input type="checkbox"/>	<input type="checkbox"/>	<input type="checkbox"/>

1,385 completed surveys!

3. Prior to the COVID-19 pandemic, how often did you visit or use Camas parks, trails, recreation facilities or natural areas?

- Everyday
- At least once a week
- Two or more times a month
- About once a month
- A few times over the year
- Do not visit facilities / parks / open spaces
- Don't know

4. Prior to the COVID-19 pandemic, what would you say are the main reasons your household visited Camas parks, recreation facilities or open spaces in the past year? (CHECK ALL THAT APPLY)

- Fitness / Exercise
- Dog walking
- Playgrounds
- Walking or running
- Bike riding
- Family gatherings / picnicking
- Community events / concerts
- Recreation program, class or camp
- Sport fields
- Outdoor sport courts
- Wildlife viewing
- Fishing
- Swimming
- Boating - Non-motorized / Hand-carry (canoeing, kayaking)
- Boating - Motor / trailered
- Frisbee or disc golf
- Relaxation
- N/A - I didn't use any Camas facilities
- Other: _____

Survey Highlights

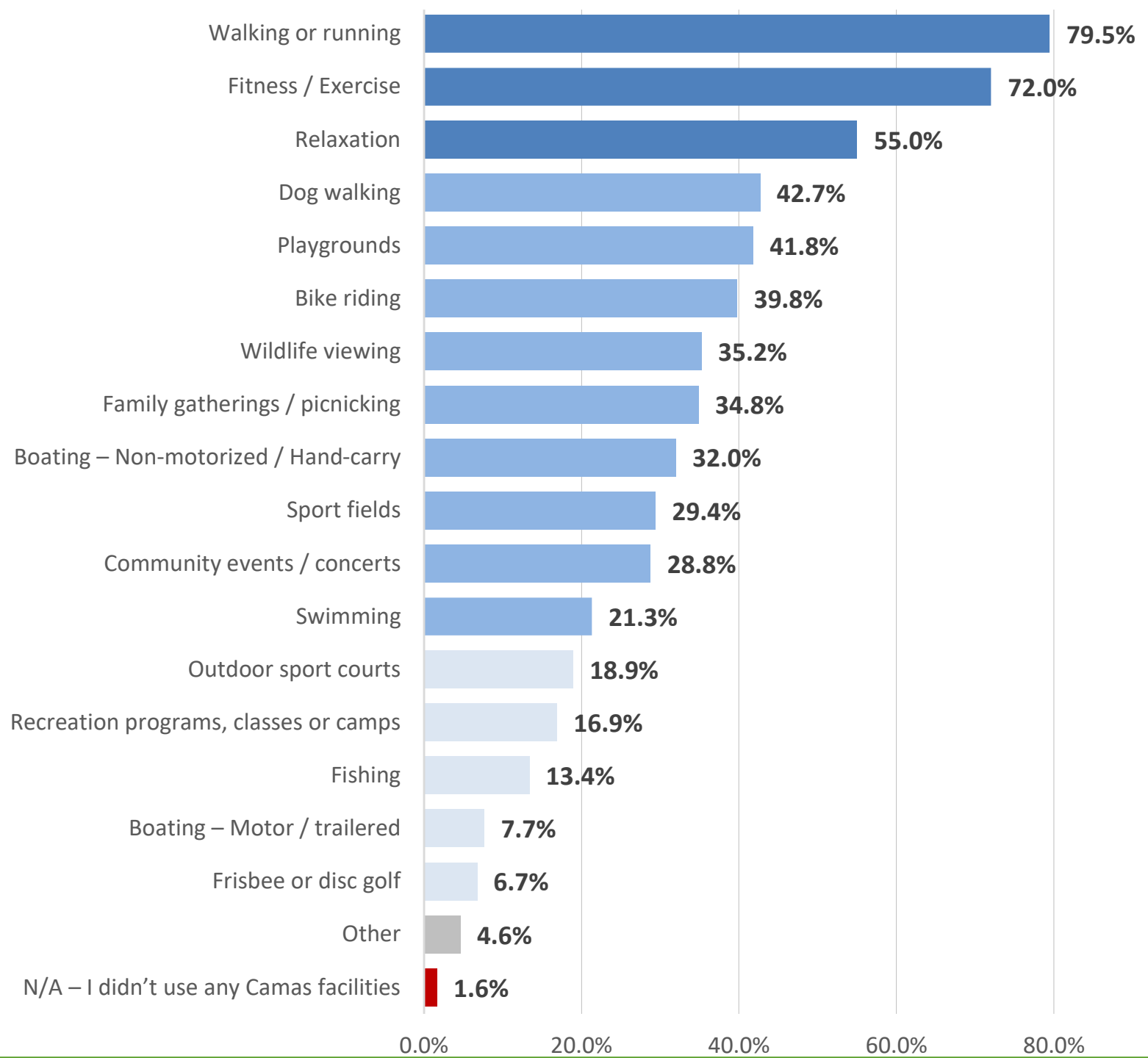
Top Reasons for Visiting

Respondents could select as many items they wanted

Strong Usage:

70% visit weekly

87% visit at least a couple times per month

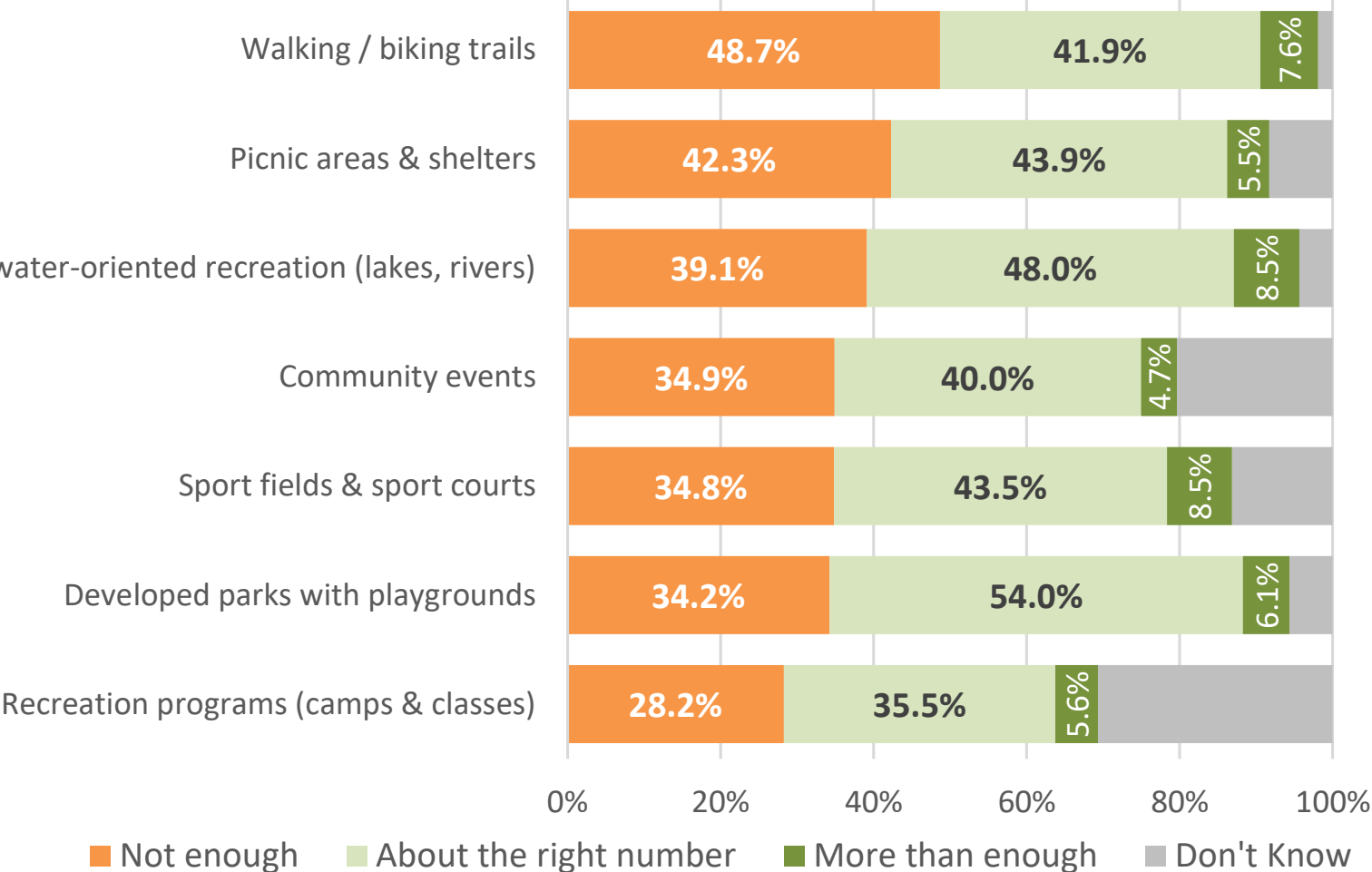


Survey Highlights

'Goldilocks' question

- 1. Walking / biking trails
- 2. Picnic areas / shelters
- 3. Water access

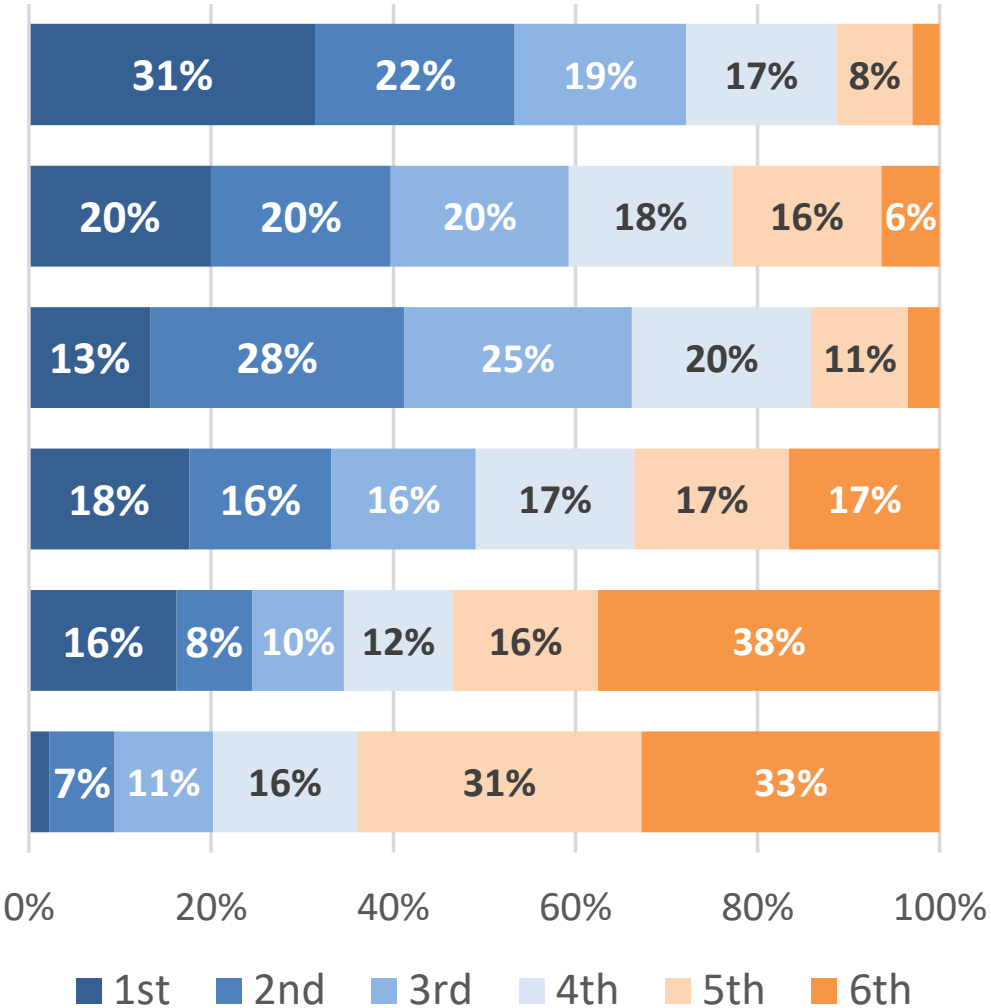
Higher need for trails noted by those between 55 - 64, those with children and those living in the Ward 3 (SW)



Survey Highlights

Prioritizing Projects

- 1** Focusing on existing park facilities & delayed maintenance
- 2** Expanding trail opportunities
- 3** Building new parks on undeveloped, city-owned parkland
- Acquiring additional land for future parks
- Building a new community center or aquatic center
- Expanding recreation classes & camps



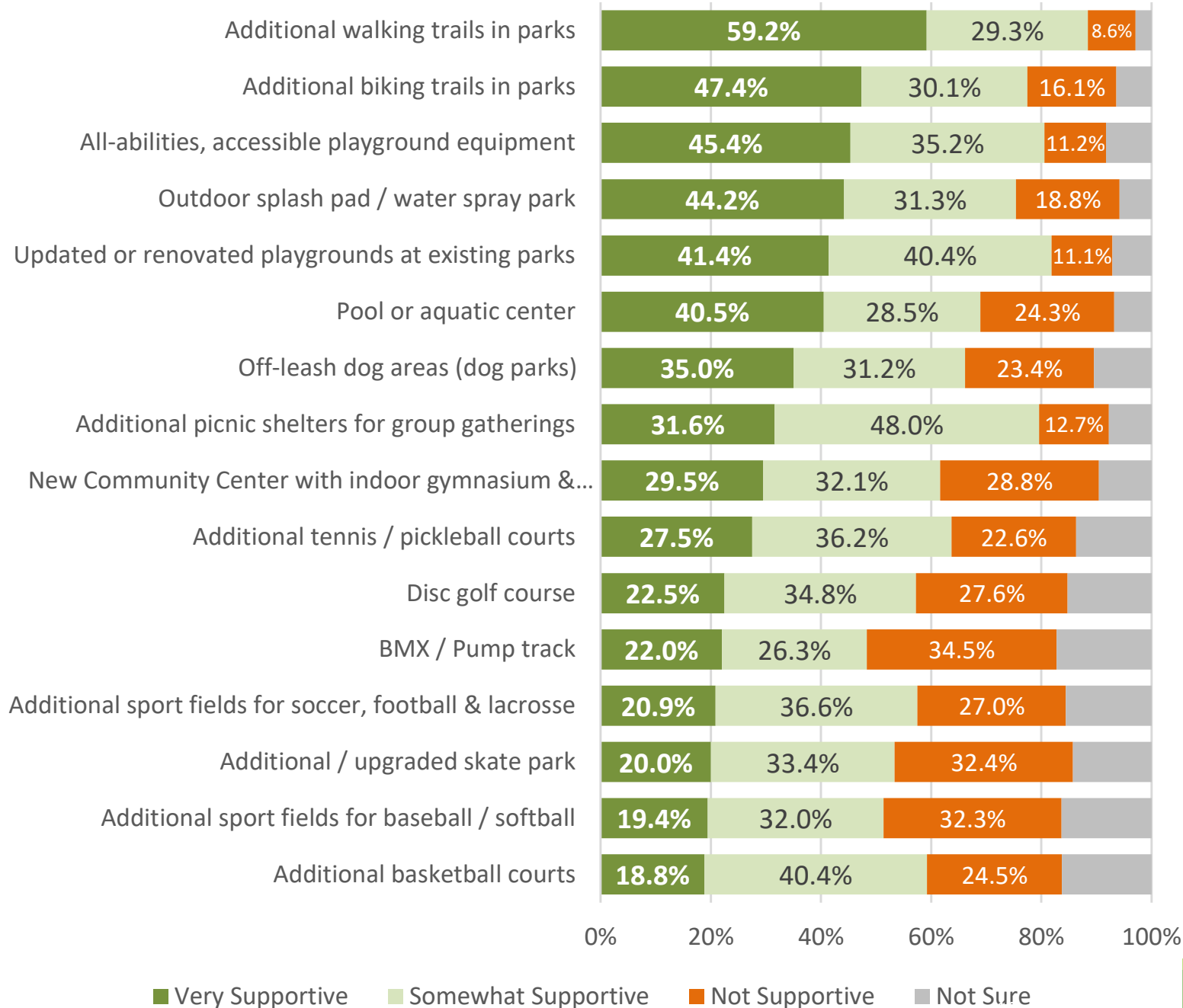
Survey Highlights

Support for Certain Amenities

Less than half of respondents were supportive of adding BMX or pump tracks.

Online respondents had stronger support for all items.

- *Additional soccer, football & lacrosse fields (+14%)*
- *Additional basketball courts (+13%)*
- *BMX / Pump track (+19%)*



Online Open House



Home » Parks, Recreation & Open Space Comprehensive Plan

Parks, Recreation & Open Space Comprehensive Plan



The Camas PROS Plan provides a decision-making framework to steward and build upon a park, trail and recreation system that serves and enhances our community’s health and quality of life – now and into the future. It guides planning, development and maintenance of park and recreation amenities and programs and is updated every six years but can influence decisions for the next 20 years.

- Late July to late August
- 130+ site visits
- 74 respondents
- Supplemented through event tabling & pop-ups

Who's Listening

Trang K. Lam (She, Her, Hers)



Parks and Recreation Director

Email tlam@cityofcamas.us

Susan Palmer (She, Her, Hers)



Parks and Recreation Coordinator

Email spalmer@cityofcamas.us

Online Open House Highlights

Testing top recreation program priorities from survey

1. After-school programs or summer day camps for children
2. Outdoor adventure summer camps, including archery, orienteering, geocaching or environmental education
3. Youth sports programs and camps during school breaks
4. Youth activities, such as fitness, music, arts or crafts
5. Teen activities, such as game nights, day trips or camps during school breaks

Online Open House Highlights

Testing top park improvement priorities from survey

1. Building new parks on undeveloped, city-owned parkland (\$\$\$)
2. Outdoor splash pad / water spray park (\$\$)
3. Additional paved and/or accessible shared-use trails in parks (\$\$\$)
4. All-abilities, accessible playground equipment (\$\$)
5. Additional soft-surfaced biking trails in parks (\$\$)
6. Additional picnic shelters for group gatherings (\$)

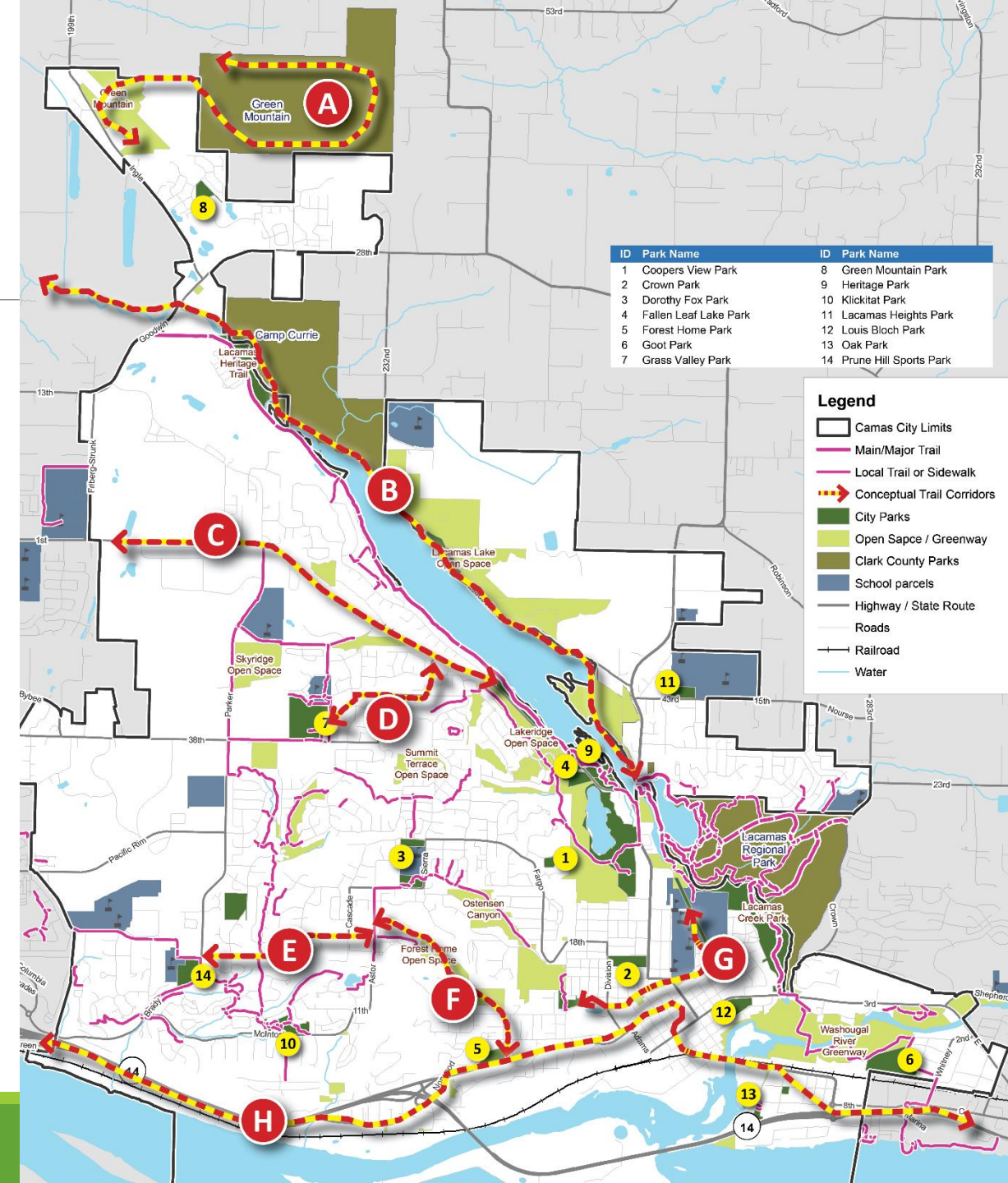
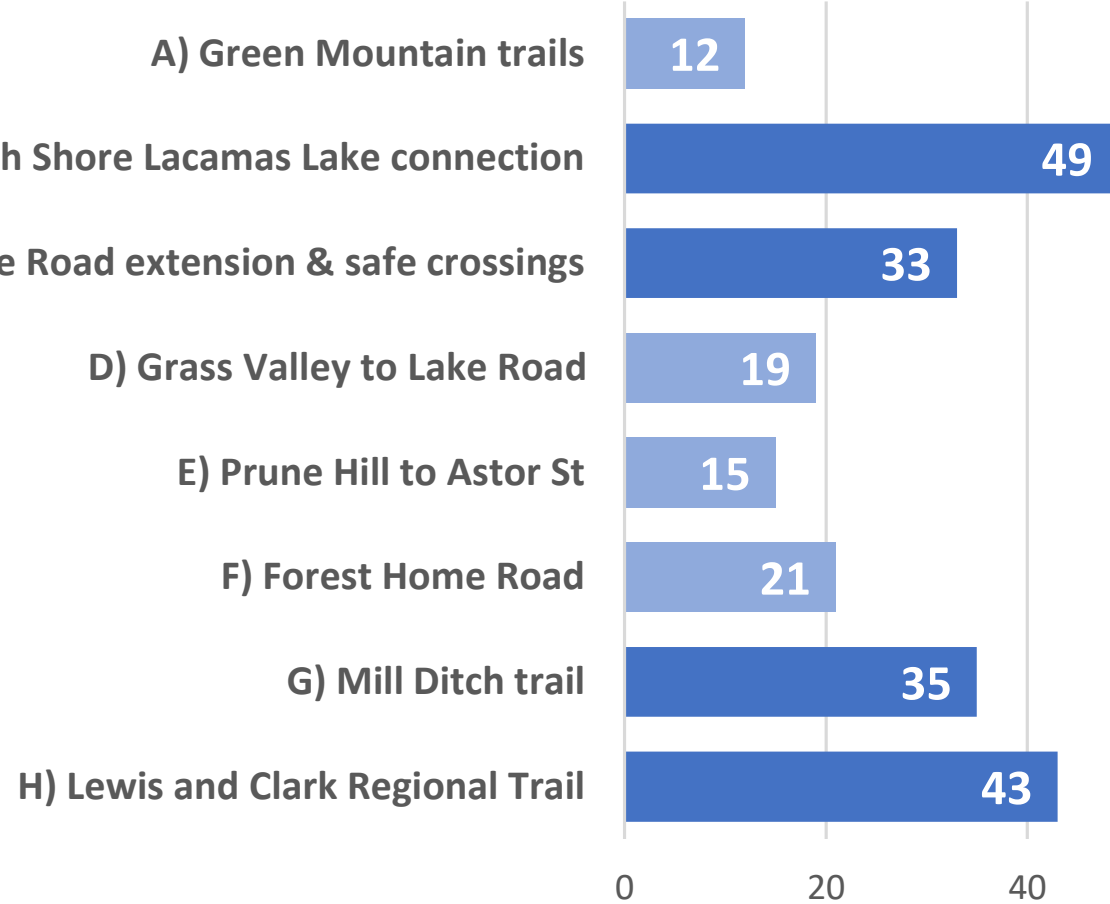
Online Open House Highlights

Top priorities for new/additional amenities

1. Acquire and develop land to fill gaps in trail corridors (\$\$)
2. Install an outdoor splash pad / spray park (\$\$)
3. Provide an off-leash dog park (\$)
4. Build a new community center or aquatic center (\$\$\$\$)
5. Picnic shelters (\$)
6. Bike/pump track park (\$\$\$)
7. New sports fields (\$\$\$)

Online Open House Highlights

Priority Trail Connections



Other Outreach

Stakeholder Interviews & Group Discussions

- *Focus on trail connectivity (connecting trail gaps)*
- *Demand strong for pump track & more mountain bike trails*
- *Wayfinding, maps & communications for trail system*
- *Invest in restrooms and parking*
- *Increase sport field capacity by improving field quality and adding lighting where appropriate*
- *Coordinate more with the school district for community use of district lands*
- *Continue with the attitude of ‘working together’ with the development community*



Core Themes

- Maintain existing parks & natural areas
- Expand & connect trail system
- Develop additional, city-owned parkland
- Accommodate new uses (splash pad, pump track, etc.)
- Provide space for programming (sport fields & courts, shelters for outdoor education, etc.)
- Improve wayfinding & communications



Discussion Questions

Acknowledging the new land purchases the City has accomplished in last 5 years, what policies or strategies should be considered to help guide the need to balance developing new amenities with maintaining/updating existing facilities?



Discussion Questions

Recognizing public interest in trail access and connectivity, what policies or strategies should be employed to better ensure existing gaps are filled and stronger linkages are made, especially as residential development and infill continue?



Discussion Questions

Do you have recommendations for how the City could better coordinate or work with private sector developers for park and trail improvements?

Thoughts on design or development standards?



Discussion Questions

What other issues or policies need special attention?



Next Steps

Upcoming Milestones:

- Working draft PROS Plan - Nov.
- Commission review – Nov./Dec.
- Council review – Dec./Jan.

