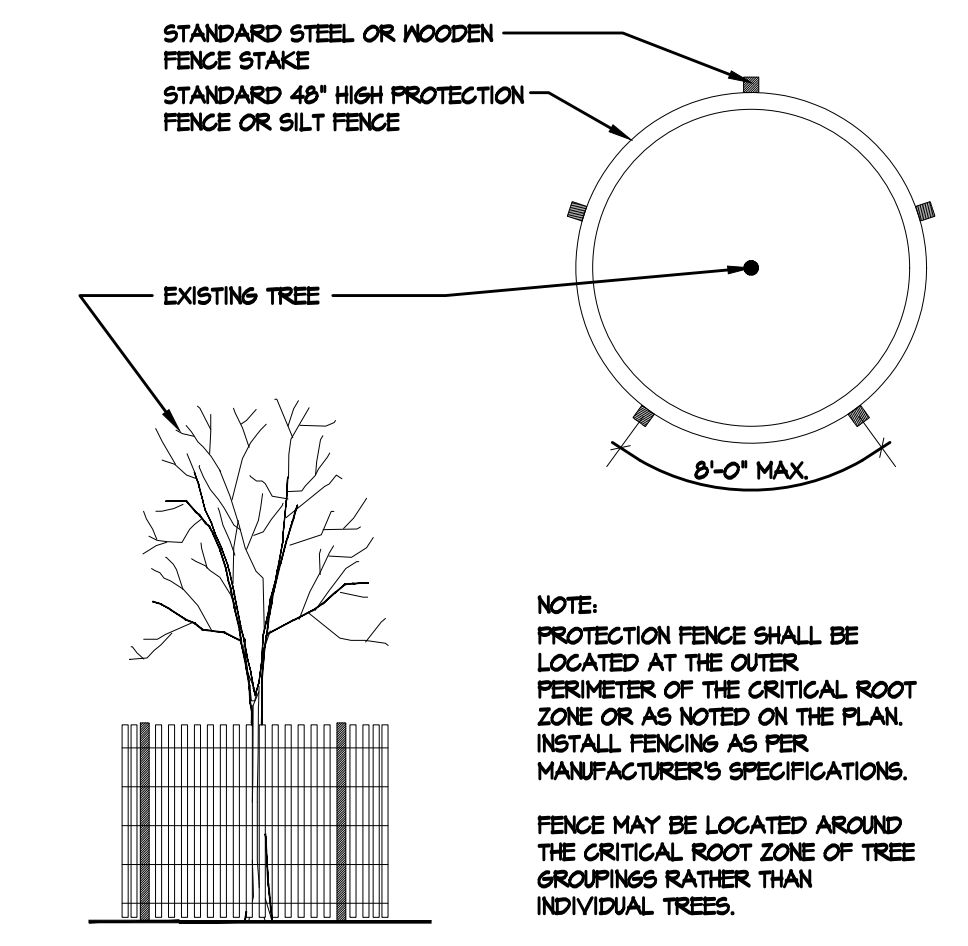


SITE STATISTICS	
93± AC	SITE AREA
19	TREE UNITS REQUIRED (20 / ACRE)
0	TREE UNITS RETAINED

SYMBOL LEGEND	
	EXISTING SIGNIFICANT DECIDUOUS TREE (12" CAL. OR GREATER)
	EXISTING SIGNIFICANT EVERGREEN TREE (8" CAL. OR GREATER)
	EXISTING DECIDUOUS (LESS THAN 12" CAL.)
	EXISTING EVERGREEN TREE (LESS THAN 8" CAL.)
	EXISTING SIGNIFICANT TREES TO BE REMOVED
	ROOT PROTECTION ZONE AREA (RPZ)
	TREE PROTECTION FENCE LOCATION (4' CHAIN LINK, ORANGE PVC FENCE OR SILT FENCE) (ALSO DENOTES AREA WHERE NO IMPACTS TO THE ROOT PROTECTION ZONE SHALL OCCUR). SEE DETAIL THIS SHEET.



A Tree Protection Fencing Detail
 Not To Scale SECTION / PLAN VIEW

TREE PROTECTION TIME LINE & NARRATIVE

EXISTING ON-SITE AND OFF-SITE TREE LOCATIONS AND SIZES HAVE BEEN OBTAINED VIA SURVEY INFORMATION AND SITE OBSERVATIONS.

NO EXISTING TREES WITHIN THE PROJECT BOUNDARIES ARE PROPOSED TO BE RETAINED.

TREE PROTECTION FENCING SHALL BE PLACED AS SHOWN TO PROTECT THE OFF-SITE TREE NEAR THE S.E. CORNER OF THE SITE.

TREE PROTECTION / EROSION CONTROL FENCING SHALL BE ESTABLISHED PRIOR TO EXCAVATION. IT IS RECOMMENDED TO BE INSTALLED AT THE SAME TIME EROSION CONTROL MEASURES ARE INSTALLED. WHERE TREE FENCE AND EROSION CONTROL FENCE ARE LOCATED AT THE SAME LOCATION, EROSION FENCE THEN SERVES AS TREE PROTECTION FENCE. SEE DETAIL THIS SHEET.

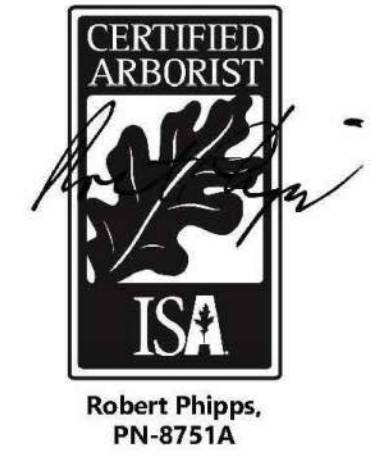
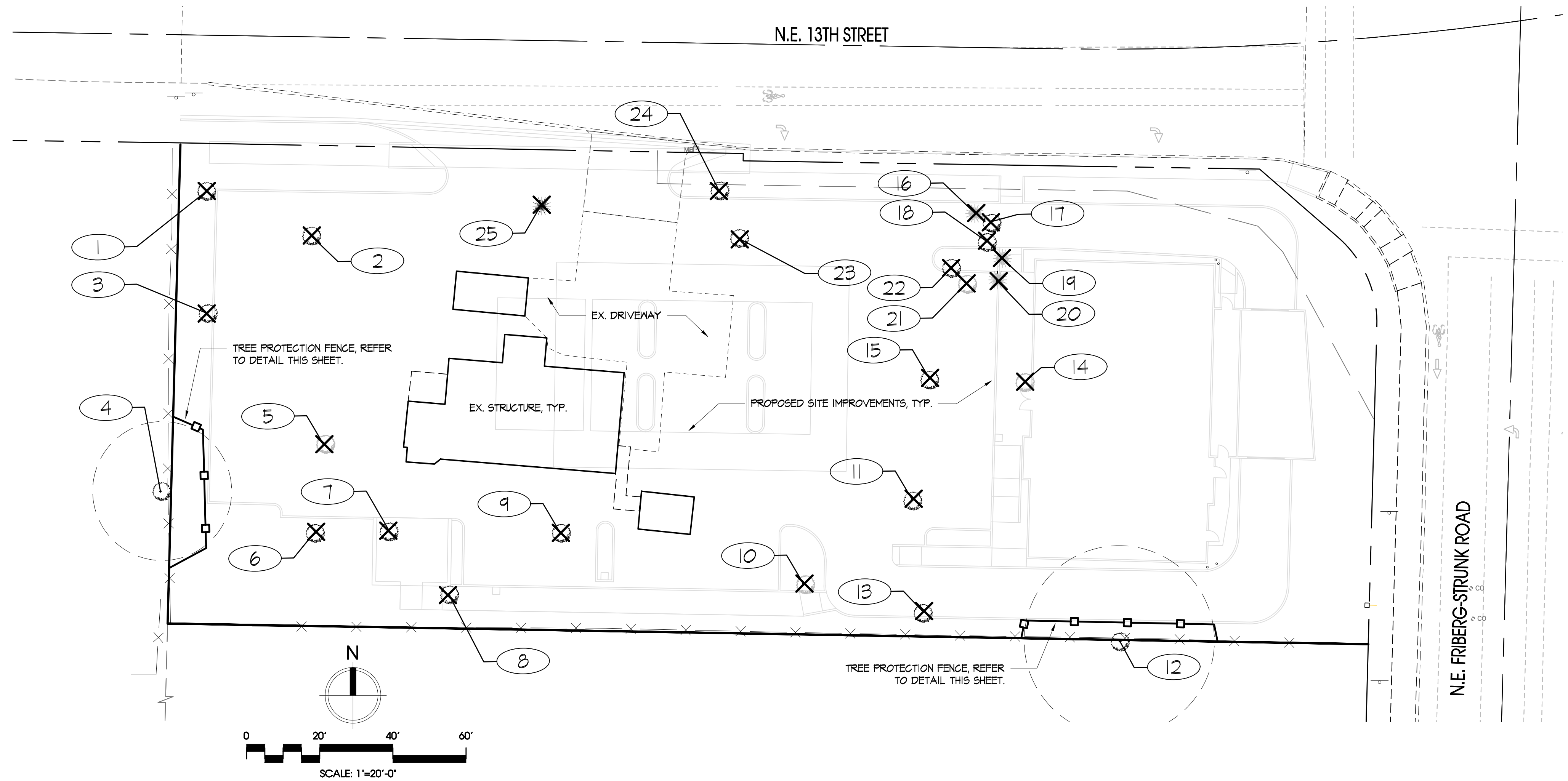
TREES DETERMINED TO BE A SAFETY HAZARD AT THE TIME OF CONSTRUCTION MAY BE REMOVED. THE SITE WILL MAINTAIN A MINIMUM TREE UNIT COUNT OF 20 TREES PER ACRE IN ACCORDANCE WITH CITY OF CAMAS MUNICIPAL CODE CC 10.13.051.

TREE PROTECTION NOTES

- NO PERSON MAY CONDUCT ANY OF THE FOLLOWING ACTIVITIES WITHIN THE DRIP LINE OF THE TREES DESIGNATED TO REMAIN INCLUDING, BUT NOT LIMITED TO: PARKING EQUIPMENT, FUELING, SERVICING EQUIPMENT, PLACING SOLVENTS, STORING BUILDING MATERIAL AND SOIL DEPOSITS, DUMPING CONCRETE WASHOUT AND LOCATING BURN HOLES.
- DURING CONSTRUCTION, NO PERSON SHALL ATTACH ANY OBJECT TO THE TREES DESIGNATED FOR PROTECTION.
- THE CONTRACTOR SHALL FOLLOW THE GRADING PLAN PROVIDED BY THE PROJECT CIVIL ENGINEER. GRADING ACTIVITIES SHALL BE CONDUCTED IN A MANNER TO MINIMIZE THE IMPACTS TO THE TREES MARKED FOR PRESERVATION.
- THE EXCAVATOR SHALL KEEP A SHARP PAIR OF LOPPERS AND A SHARP 12" PRUNING SAW ACCESSIBLE ON-SITE DURING GRADING OPERATIONS. ANY ROOTS LARGER THAN 1/2" SHALL BE PRUNED TO THE FACE OF THE CUT (USING A SHARP PAIR OF LOPPERS OR A SHARP 12" PRUNING SAW) AND SHALL NOT BE TORN FROM THE GROUND BY MECHANICAL EXCAVATION.
- SPECIAL CARE SHALL BE EXERCISED IN WORKING NEAR THE TREES TO BE RETAINED. THIS INCLUDES HAND EXCAVATING THE ROOTS AT THE EDGE OF THE EXCAVATION AND CUTTING ROOTS WITH A LOPPER OR PRUNING SAW. PRUNING THE ROOTS AT THE EDGE OF EXCAVATION WILL MINIMIZE BREAKAGE OF HEALTHY ROOTS BEYOND THE EDGE OF THE PROPOSED EXCAVATION.
- EXCEPT FOR THE PROPOSED IMPROVEMENTS SHOWN WITHIN THE DRIP LINES OF THE TREES NOTED TO BE RETAINED THE GRADE SHALL NOT BE ELEVATED OR REDUCED FROM EXISTING GRADE.
- IF THE GRADE ADJACENT TO A PRESERVED TREE IS RAISED SUCH THAT IT COULD SLOUGH OR ERODE INTO THE TREE'S DRIP LINE, IT SHALL BE PERMANENTLY STABILIZED.
- THE TREES NOTED TO BE RETAINED SHALL BE PROTECTED FROM EROSION AND SEDIMENTATION. CLEARING OPERATIONS SHALL BE CONDUCTED SO AS TO EXPOSE THE SMALLEST PRACTICAL AREA OF SOIL TO EROSION FOR THE LEAST POSSIBLE TIME. REFER TO THE PROJECT'S EROSION CONTROL PLAN FOR MORE INFORMATION.
- THE PROJECT SHALL NOT INSTALL AN IMPERVIOUS SURFACE OTHER THAN THOSE SPECIFICALLY SHOWN ON THE PLANS WITHIN THE DRIP LINE OF THE TREES TO BE RETAINED.
- UTILITY TRENCHES SHALL BE LOCATED OUTSIDE OF THE DRIP LINE OF THE TREES TO BE RETAINED.
- ONGOING TREE MAINTENANCE SHALL BE THE RESPONSIBILITY OF THE LAND OWNER. TREES SHALL BE MAINTAINED IN ACCORDANCE WITH ANSI AMERICAN NATIONAL STANDARDS INSTITUTE'S AS WELL AS OTHER APPLICABLE FEDERAL, STATE AND LOCAL STANDARDS PERTAINING TO TREE CARE OPERATIONS.

- ANSI Z183 ARBORICULTURAL OPERATIONS: SAFETY REQUIREMENTS
- ANSI A300 PART 1 PRUNING

DRAWN: CB/RP	CHECKED: CB
SCALE: 1" = 20'-0"	DATE: 11.03.23
JOB #: 23-1037	
ISSUED FOR: PLR	
REVISIONS:	



Tree No.	Species	Tree Data			Condition Notes
		DBH	RPZ	Tree Condition	
1	Prunus spp. (Plum)	12"	12'	poor	Diseases or Conks, Visible Decay
2	Malus spp. (Apple)	19"	19'	fair	Diseases or Conks, Leaning
3	Malus spp. (Apple)	13"	13'	fair	Dieback 30% - 60%
4	Robinia pseudoacacia (Black Locust)	19"	19'	fair	Heavy Leaning (>60%)
5	Acer palmatum (Japanese maple)	9"	9'	poor	Dieback 30% - 60%, Visible Decay
6	Thuja plicata (Western Redcedar)	18"	18'	good	
7	Malus spp. (Apple)	18"	18'	poor	Branch Failures, Biotic Damage (Pests/Fungus), Dieback 60%-90%, Diseases or Conks, Visible Decay
8	Acer palmatum (Japanese maple)	12"	12'	good	
9	Malus spp. (Apple)	17"	17'	fair	Biotic Damage (Pests/Fungus), Dieback 30% - 60%, Leaning
10	Malus spp. (Apple)	11"	11'	poor	Included Bark, Dieback 30% - 60%, Leaning
11	Acer saccharum (Sugar Maple)	22"	22'	good	Dieback 30% - 60%
12	Aesculus californica (California Buckeye)	26"	26'	fair	Branch Failures, Dieback 30% - 60%, Leaning
13	Quercus garryana (OR White Oak)	43"	43'	fair	Leaning
14	Aesculus californica (California Buckeye)	10"	10'	fair	Dieback 30% - 60%
15	Robinia pseudoacacia (Black Locust)	25"	25'	fair	Branch Failures, Dieback 30% - 60%, Leaning
16	Picea pungens (Blue Spruce)	6"	6'	poor	Branch Failures, Branches Suppressed, Dieback 30% - 60%, Visible Decay
17	Acer saccharum (Sugar Maple)	18"	18'	poor	Branch Failures, Branches Suppressed, Dieback 30% - 60%, Visible Decay
18	Acer saccharum (Sugar Maple)	19"	19'	poor	Branch Failures, Branches Suppressed, Dieback 30% - 60%, Visible Decay
19	Picea pungens (Blue Spruce)	7"	7'	poor	Branch Failures, Branches Suppressed, Dieback 30% - 60%, Visible Decay
20	Thuja occidentalis (Aborvitae)	6"	6'	poor	Branch Failures, Branches Suppressed, Co-dominant, Dieback 30% - 60%, Visible Decay
21	Malus spp. (Apple)	6"	6'	poor	Branch Failures, Branches Suppressed, Dieback 30% - 60%, Visible Decay
22	Acer saccharum (Sugar Maple)	20"	20'	poor	Branch Failures, Branches Suppressed, Dieback 30% - 60%, Visible Decay
23	Acer palmatum (Japanese maple)	15"	15'	good	
24	Robinia pseudoacacia (Black Locust)	33"	33'	poor	Branch Failures, Dieback 30% - 60%, Leaning, Visible Decay
25	Thuja plicata (Western Redcedar)	44"	44'	fair	Leaning, Visible Decay