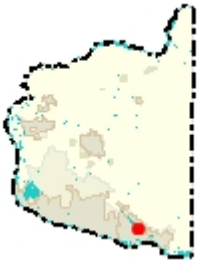




Quit Claim Deed Property - West Portion of Lot



Legend

- Taxlots
- Cities Boundaries
- Urban Growth Boundaries

Notes:

Deed is for SR-500 Right-of-Way. Only the portion containing the roundabout area is being deeded to WSDOT

752.3 0 376.17 752.3 Feet

WGS_1984_Web_Mercator_Auxiliary_Sphere
Clark County, WA. GIS - <http://gis.clark.wa.gov>

This map was generated by Clark County's "MapsOnline" website. Clark County does not warrant the accuracy, reliability or timeliness of any information on this map, and shall not be held liable for losses caused by using this information.