

## How to **REMEDiate** Your Well

If your well is contaminated or damaged, consult with your public health department, certified well inspector, and/or licensed well contractor to determine options for repair and remediation. Potential solutions include:



Disinfectants to remove germs and microbes.



Filters or other on-site treatment processes.



Identifying a new water source.



Digging a new, deeper well.

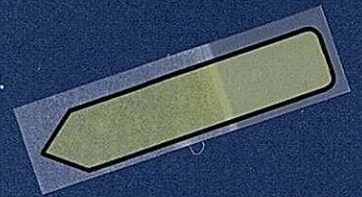
## **PAY ATTENTION** to Your Well Surroundings and **ASK QUESTIONS**



Find out about facilities that may pollute your drinking water.

Attend planning or zoning meetings and ask questions about how your water sources will be protected.

Ask to see a project's environmental impact statement. Check if water sources have been addressed.



## **HOW WELLS CAN BECOME CONTAMINATED**

Wells can become contaminated by sources around your well and your community. A few examples include:

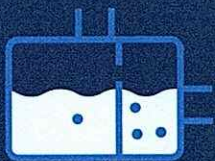
### **AROUND YOUR WELL**



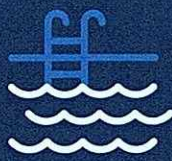
Fuel tanks



Lawns—fertilizers, pesticides, and herbicides



Septic tanks and sewer lines

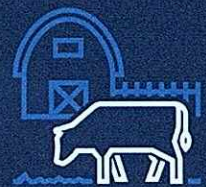


Swimming pool chemicals

### **AROUND YOUR COMMUNITY**



Factories and industrial manufacturing



Farms and animal feedlots



New construction and mining operations



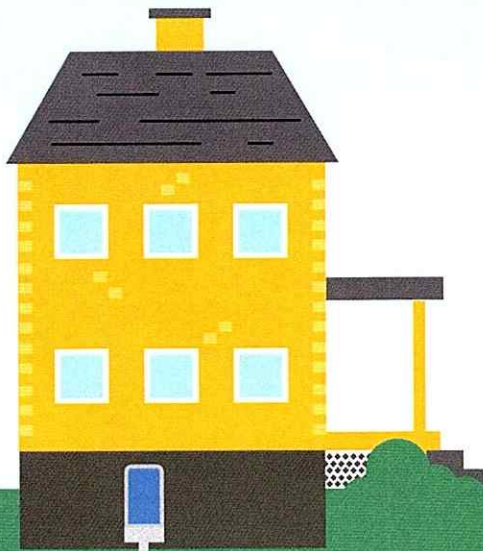
Cemeteries



# Protect Your PRIVATE WELL



Many Americans receive their drinking water from a private well. These wells are not regulated by EPA or required to follow EPA's standards. If you use a private well, there are steps you can take to protect your water and ensure the safety of your drinking water.



## How to **PROTECT** Your Well

### TEST YOUR WELL WATER ANNUALLY



Have your water tested annually for contaminants.



Always use a state certified laboratory for testing.



If contaminant levels exceed a drinking water standard, retest the water supply immediately and contact your public health department for assistance.

## How to **PREVENT** Well Water Pollution



Keep hazardous chemicals out of septic systems and away from your well



Pump and inspect septic systems as recommended by your local health department



Install a sanitary seal and slope the area around the well to drain surface runoff



Hire a certified well driller for any new well construction or modification