



1

MISSION

It is the mission of the Port of Camas-Washougal to make **strategic investments** and develop **effective partnerships** that enhance the community's quality of life by bringing **jobs, infrastructure, and recreational opportunities** to East Clark County.



VISION

The Port of Camas-Washougal is a **community leader** and collaborator creating **diverse economic opportunities** in an equitable, transparent, and accountable manner. The Port's development projects and operations support family-wage jobs, a thriving regional economy, environmental sustainability, and outstanding recreation.

VALUES

- Port staff will **serve the community** in a respectful and professional manner.
- The Port will be **transparent** in its engagement with the public.
- The Port will take a **collaborative approach** to working with community partners.
- The Port will create an environment that is **equitable and inclusive of all groups**.
- The Port will work toward **economic, environmental, and social sustainability**.

2



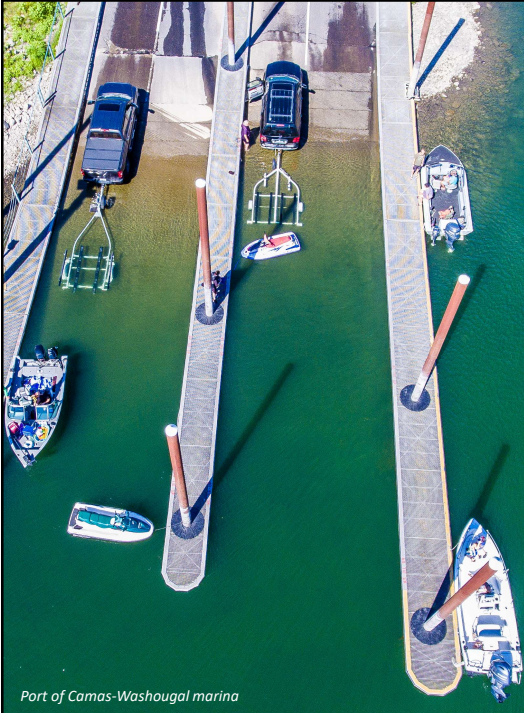
WHAT IS STRATEGIC PLANNING?

Developing alignment on multi-year priorities and effectively embracing them to link the present to the future.

THE PORT
CAMAS-WASHOUGAL
MAUL FOSTER ALONGI

© 2024 Maul Foster Alongi, Inc

3



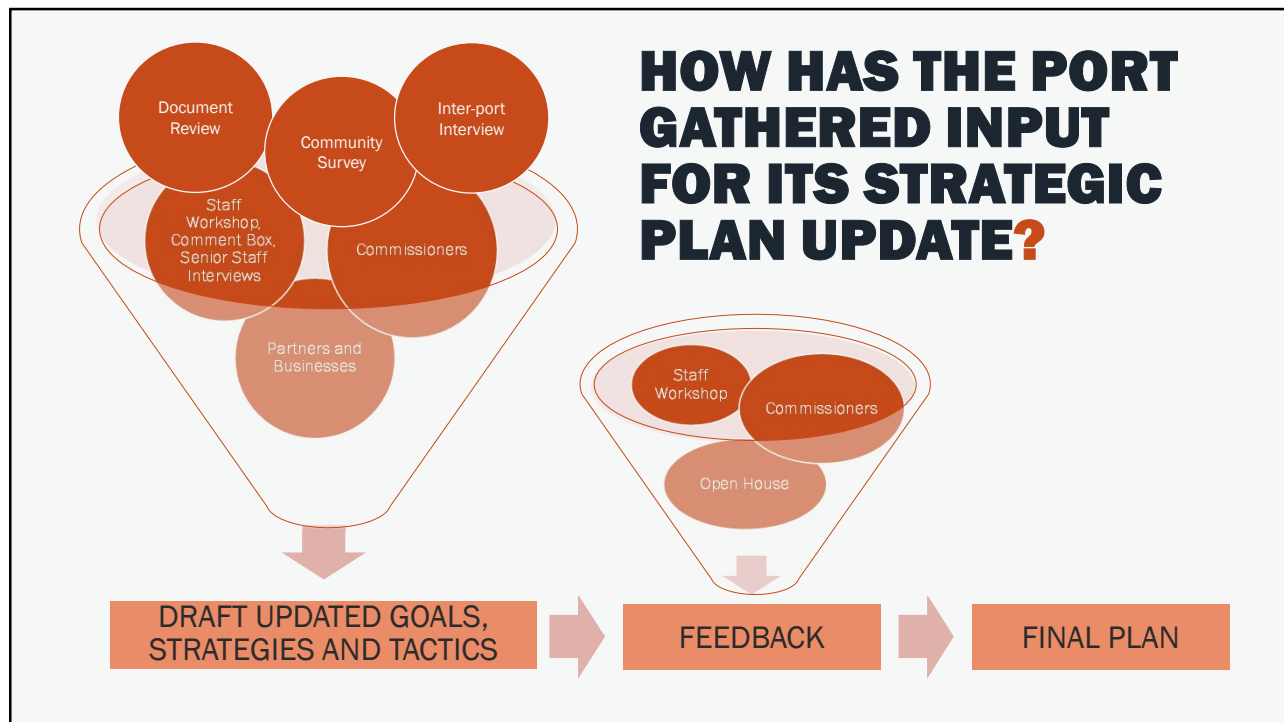
Port of Camas-Washougal marina

OUR PROCESS.

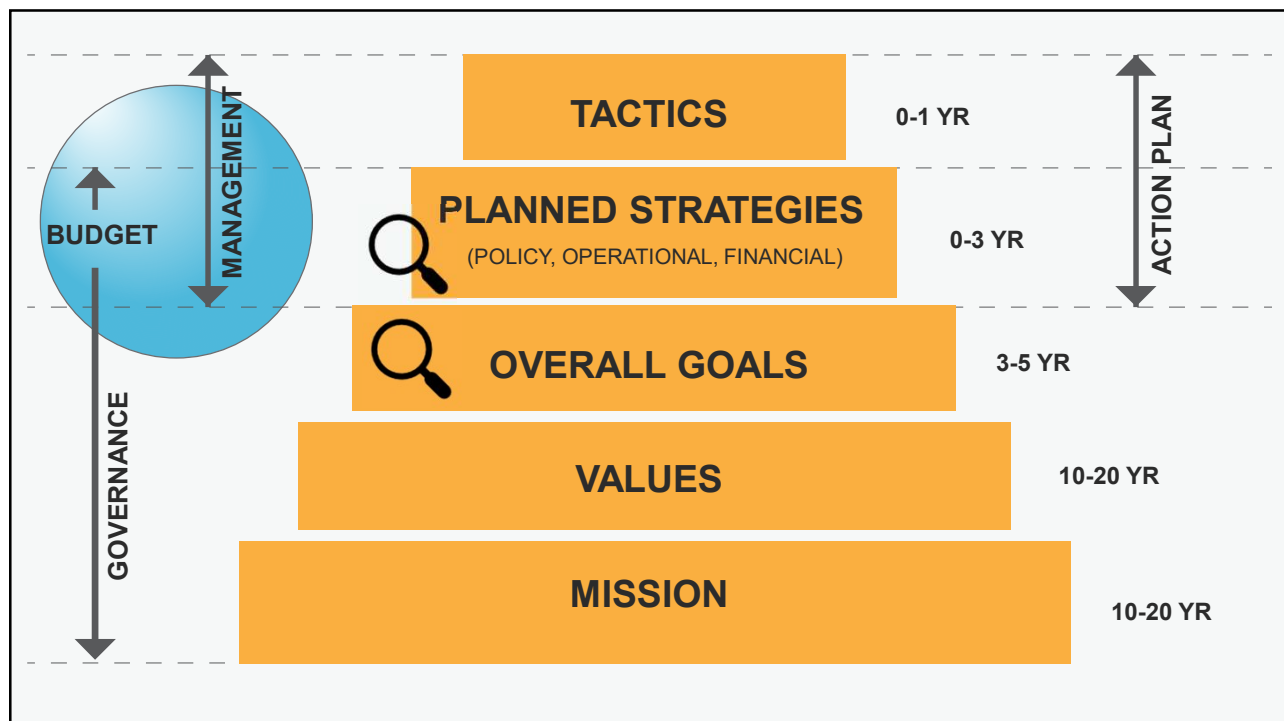
- ✓ **DISCOVER**
Background research
- ✓ **ILLUMINATE**
Commission meetings
Commissioner interviews
Staff workshops
Stakeholder interviews
Focus groups
Stakeholder on-line survey
Community open house
- ✓ **ACTIVATE**
Plan development
City Council workshops
Port Commission adoption

© 2024 Maul Foster Alongi, Inc

4



5



6

GOAL AREA. **Community & Culture**



Fostering and leveraging an inclusive, vibrant environment where shared knowledge, diverse perspectives, and common values empower collective growth and success.

GOALS

- | | |
|-----|---|
| CC1 | Foster strong community connectivity in Camas and Washougal. |
| CC2 | Deliver strategic communication and engagement that clearly conveys the Port's mission, vision and role. |
| CC3 | Continue developing the Port as a competitive, world-class organization with a resilient and transparent culture. |



7

GOAL AREA. **Organizational Resilience**



Building and maintaining the ability to effectively navigate opportunities and disruptions, adapt to change, and sustain long-term success through proactive planning and continuous improvement.

GOALS

- | | |
|-----|--|
| OR1 | Develop long term business and resiliency plans for the marina line of business. |
| OR2 | Finalize a long-term approach to the development and operational future of Grove Field. |
| OR3 | Expand and stabilize the Port's real estate portfolio. |
| OR4 | Evaluate the Port's operational effectiveness and community impact. |
| OR5 | Integrate environmental and social responsibility into decision-making to enhance the Port's adaptability and competitiveness. |



8

GOAL AREA. **Economic Development**



Cultivating a dynamic, inclusive, and resilient local economy that promotes sustainable growth, fuels innovation and enhances quality of life in our communities.

GOALS

ED1 Define and promote the Port's role in regional economic development.

Strategies

A By the end of 2026, work with local partners to define and adopt a strategic role in local and regional economic development. The resulting plan will be measurable and community-supported.

B Define the Port's role in the future of the Georgia Pacific property.



9



Photo credit – Grains of Wrath

OUR PROCESS.

Jan-Mar



DISCOVER

Background research

Feb-April



ILLUMINATE

Commission meetings
Commissioner interviews
Staff workshops
Stakeholder interviews
Focus groups
Stakeholder on-line survey
Community open house

May-July



ACTIVATE

Plan development
City Council workshops
Port Commission adoption

© 2024 Maul Foster Along, Inc.

10

