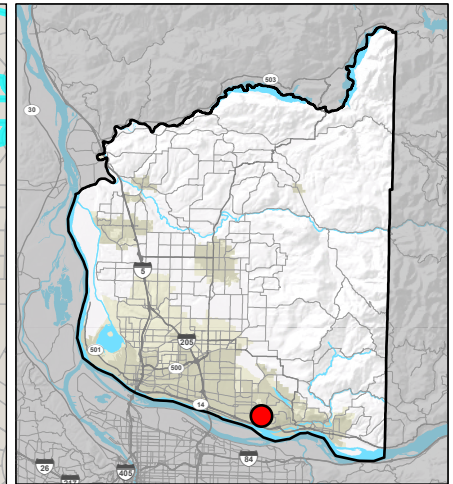
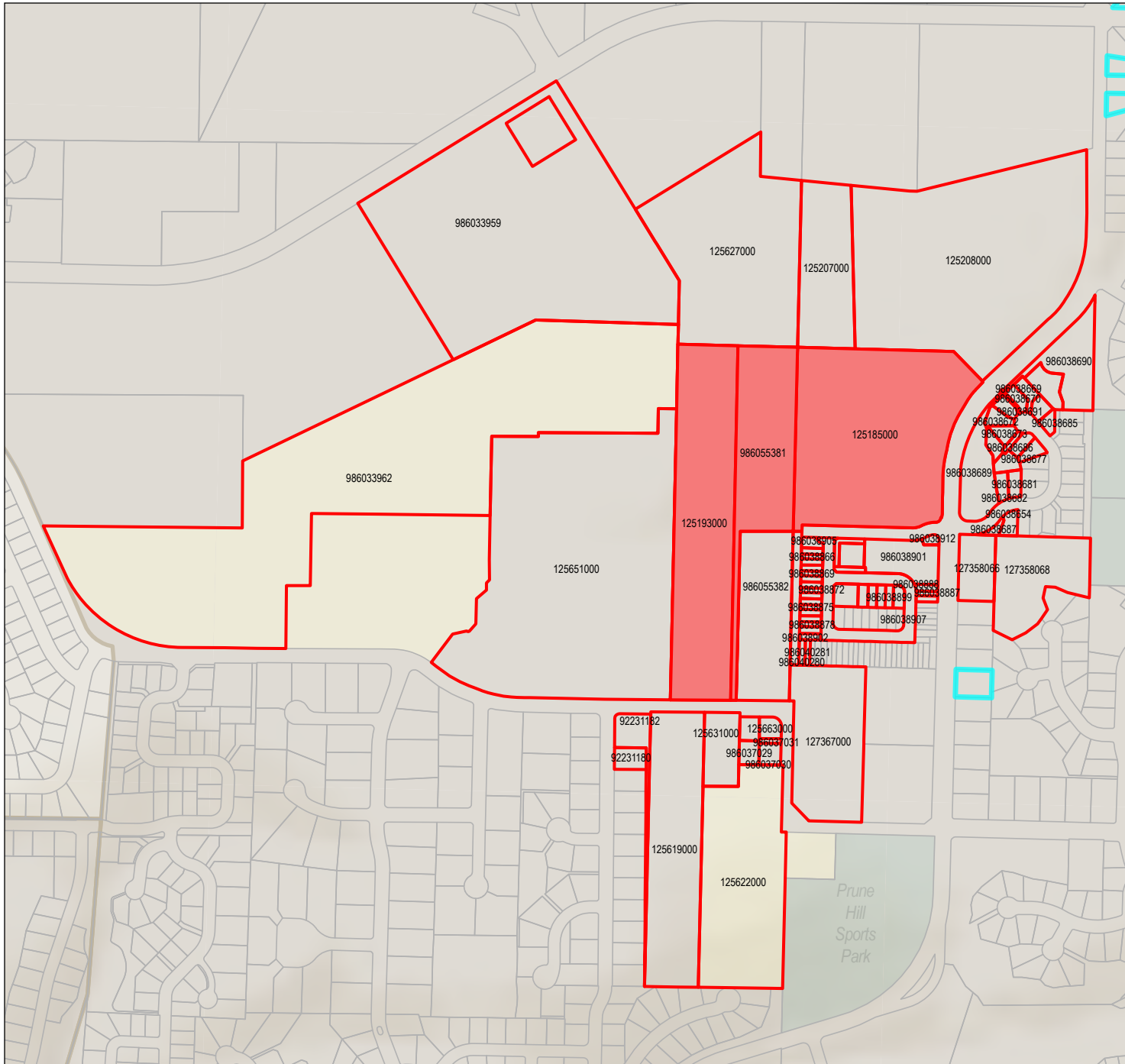




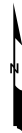
12. Mailing Labels



**PID(s): 125185000, 125193000,
986055381,
300-Foot Buffer**

KEY

- Subject Property
- Buffer Selection
- Parcels



NOTE: Information shown on this map was collected from several sources. Clark County accepts no responsibility for any inaccuracies that may be present.



Owner Name	Mailing Address
ALONZO DAVID L	16420 SE MCGILLIVRAY BLVD STE 103 PMB 437,VANCOUVER,W
ARABI NEGAR NEMATIAN	4010 NW 20TH AVE, CAMAS,WA, 98607
BAGAL MAHESH & BAGAL MAHESHWARI	1727 NW TIDLAND ST, CAMAS,WA, 98607
BARRON HATFIELD FAMILY LLLP	5511 NW 234th ST, RIDGEFIELD,WA, 98642
BEALE LINDA	4011 NW 20TH AVE, CAMAS,WA, 98607
BECK JACK G & BECK LOUANN M	4318 NW SAGE LP, CAMAS,WA, 98607
BITRA RATNA K & BITRA VIJAY	4072 NW 20TH AVE, CAMAS,WA, 98607
BROWNING JUSTIN C & KOVARIK DAVID K	1737 NW TIDLAND ST, CAMAS,WA, 98607
BYUN JI-HYUN TRUSTEE	PO BOX 2684,VANCOUVER,WA, 98668
CAMAS SCHOOL DISTRICT #117	841 NE 22ND AVE, CAMAS,WA, 98607
CAMDAYS REALTY LLC	2219 NW SIERRA WAY, CAMAS,WA, 98607
CHANG WENDY	4071 NW 20TH AVE, CAMAS,WA, 98607
CHIA CHU-TIEN & CHIA YI-JEN TRUSTEES	8420 SE 17TH CIR,VANCOUVER,WA, 98664
CHOU YOM C & YANG WON-HUEI	2435 SUDDABY,TUSTIN, CA, 92782
CITY OF CAMAS	430 NE EVERETT ST, CAMAS,WA, 98607
CITY OF CAMAS	616 NE 4TH AVE, CAMAS,WA, 98607
CROWN POINTE HOMEOWNERS ASSOCIATION	1708 NW WHITMAN ST, CAMAS,WA, 98607
DALEY DENNIS W ETAL	PO BOX 757, RANCHO SANTA FE, CA, 92067
DESHPANDE SACHIN G & DESHPANDE MONIKA S	4021 NW 20TH AVE, CAMAS,WA, 98607
DUGGAL KUNAL & DEWAN UPASNA	4007 NW 20TH AVE, CAMAS,WA, 98607
ERWIN JILL L	PO BOX 771, CAMAS,WA, 98607
FERDASZEWSKI RACHELA & FERDASZEWSKI JOSHUA K	1747 NW TIDLAND ST, CAMAS,WA, 98607
GABRIO WILLIAM G & GABRIO JANET I	4320 NW SAGE LOOP, CAMAS,WA, 98607
HANCOCK CHAD E & HANCOCK LAUREL R	1668 NW WHITMAN ST, CAMAS,WA, 98607
HEREFORD FARMS LLC	26 MEADOHAWK LN, LAS VEGAS, NV, 89135
HPA BORROWER 2018-1 MS LLC	120 S RIVERSIDE PLZ STE 2000, CHICAGO, IL, 60606
JOHNSTONE MARY HELEN	1831 NW SAGE ST, CAMAS,WA, 98607
JR MERIT ENTERPRISES LLC	4505 NE 68TH DR,VANCOUVER,WA, 98661
KAHN BARBARA	1837 NW SAGE ST, CAMAS,WA, 98607
KATES CLOSE LLC	16420 SE MCGILLIVRAY BLVD #103-197,VANCOUVER,WA, 9868
KATES COVE HOMEOWNERS ASSOCIATION	16420 SE MCGILLIVRAY BLVD NO 103,VANCOUVER,WA, 98683
KIM KYUNG J & KIM JESSICA J TRUSTEES	THE KIM FAMILY TRUST 03/12/2021, CAMAS,WA, 98607
LEIF BAYLEY ELIZABETH & LEIF KYLE MICHAEL	4014 NW 20TH AVE, CAMAS,WA, 98607
LINEAR TECHNOLOGY CORP	1 ANALOG WAY,WILMINGTON, MA, 01887
LOUMAN ELIZABETH & LOUMAN JACK A TRUSTEES	4312 NW SAGE LP, CAMAS,WA, 98607
LUGLIANI INVESTMENT COMPANY LLC	16701 SE MCGILLIVRAY BLVD 160,VANCOUVER,WA, 98684
MACKAY JOHN G	4345 NW 16TH AVE, CAMAS,WA, 98607
MADUGULA ROHINI K & MADUGULA KOMAL	4019 NW 20TH AVE, CAMAS,WA, 98607
MORIARTY TERRA	3255 NW VALLEY ST, CAMAS,WA, 98607
NELSON JEFFREY	4075 NW 20TH AVE, CAMAS,WA, 98607
NLIGHT INC	5408 NE 88TH ST BLDG E,VANCOUVER,WA, 98665
NOVIK NATALIIA & NOVIK OLEKSII	1843 NW SAGE ST, CAMAS,WA, 98607
NRP LLC	4600 NW PACIFIC RIM BLVD, CAMAS,WA, 98604
PARKER VILLAGE HOA	800 NE TENNEY RD #110-348,VANCOUVER,WA, 98685
PARRISH HARRY A TRUSTEE	HARRY PARRISH 2021 REV LIV TRUST, CAMAS,WA, 98607

Owner Name	Mailing Address
PK CONSULTING INC	4314 NW SAGE LP, CAMAS, WA, 98607
SHOJAEI MEHRDAD	4233 NW SAGE LOOP, CAMAS, WA, 98607
SINGH HINDPREET & SINGH GURJIT	2239 NW OXFORD ST, CAMAS, WA, 98607
SIRRAH HOMEOWNERS ASSOCIATION	PO BOX 905, CAMAS, WA, 98607
SMITH RICHARD J & VARTANIAN KERI B TRUSTEES	4023 NW 20TH AVE, CAMAS, WA, 98607
TAVADE NAVEEN	4305 NW SAGE LP, CAMAS, WA, 98607
THEEDA SANDEEP & ADDAGATLA NISHITHA	4015 NW 20TH AVE, CAMAS, WA, 98607
WERRY JORJAN INGRAM TRUSTEE	4310 NW SAGE LP, CAMAS, WA, 98607
WRIGHT MARC & WRIGHT SPRING	4217 NW SAGE LOOP, CAMAS, WA, 98607
YEYING TRUSTEE	1004 NE 112TH AVE, VANCOUVER, WA, 98684
ZHANG JIHONG	PO BOX 56212, PORTLAND, OR, 97238

**This document was created by the Clark County,
Washington Geographic Information System**

Number of Records 56

Number of Pages 2

Date Created 8/28/2025

Employee 

Employee Name Jesse Manley

Clark County GIS

Certified Situs Address List

PID	Situs Address			
92231180	1668 NW WHITMAN ST	CAMAS	WA	98607
92231182	4640 NW 18TH AVE	CAMAS	WA	98607
125185000			WA	0
125193000	4511 NW 18TH AVE	CAMAS	WA	98607
125207000			WA	0
125208000			WA	0
125619000	4612 NW 18TH AVE	CAMAS	WA	98607
125622000	1601 NW TIDLAND ST	CAMAS	WA	98607
125627000			WA	0
125631000	4516 NW 18TH AVE	CAMAS	WA	98607
125651000	4637 NW 18TH AVE	CAMAS	WA	98607
125663000	1747 NW TIDLAND ST	CAMAS	WA	98607
127358066	1934 NW BRADY RD	CAMAS	WA	98607
127358068			WA	0
127367000	4345 NW 16TH AVE	CAMAS	WA	98607
986033959			WA	0
986033962	5125 NW NAN HENRIKSEN WAY	CAMAS	WA	98607
986037028	1737 NW TIDLAND ST	CAMAS	WA	98607
986037029	1727 NW TIDLAND ST	CAMAS	WA	98607
986037030	1717 NW TIDLAND ST	CAMAS	WA	98607
986037031			WA	0
986038654	4072 NW 20TH AVE	CAMAS	WA	98607
986038668	4014 NW 20TH AVE	CAMAS	WA	98607
986038669	4012 NW 20TH AVE	CAMAS	WA	98607
986038670	4010 NW 20TH AVE	CAMAS	WA	98607
986038671	4007 NW 20TH AVE	CAMAS	WA	98607
986038672	4011 NW 20TH AVE	CAMAS	WA	98607
986038673	4015 NW 20TH AVE	CAMAS	WA	98607
986038674	4019 NW 20TH AVE	CAMAS	WA	98607
986038675	4021 NW 20TH AVE	CAMAS	WA	98607
986038676	4023 NW 20TH AVE	CAMAS	WA	98607
986038677	4025 NW 20TH AVE	CAMAS	WA	98607
986038681	4071 NW 20TH AVE	CAMAS	WA	98607
986038682	4075 NW 20TH AVE	CAMAS	WA	98607
986038685	4016 NW 20TH AVE	CAMAS	WA	98607
986038686			WA	0
986038687			WA	0
986038688			WA	0
986038689			WA	0
986038690	2282 NW BRADY RD	CAMAS	WA	98607
986038691			WA	0
986038865	1941 NW SAGE ST	CAMAS	WA	98607
986038866	1935 NW SAGE ST	CAMAS	WA	98607
986038867	1927 NW SAGE ST	CAMAS	WA	98607
986038868	1923 NW SAGE ST	CAMAS	WA	98607

PID	Situs Address			
986038869	1915 NW SAGE ST	CAMAS	WA	98607
986038870	1911 NW SAGE ST	CAMAS	WA	98607
986038871	1855 NW SAGE ST	CAMAS	WA	98607
986038872	1849 NW SAGE ST	CAMAS	WA	98607
986038873	1843 NW SAGE ST	CAMAS	WA	98607
986038874	1837 NW SAGE ST	CAMAS	WA	98607
986038875	1831 NW SAGE ST	CAMAS	WA	98607
986038876	1825 NW SAGE ST	CAMAS	WA	98607
986038877	1819 NW SAGE ST	CAMAS	WA	98607
986038878	1811 NW SAGE ST	CAMAS	WA	98607
986038879	1805 NW SAGE ST	CAMAS	WA	98607
986038886	4305 NW SAGE LOOP	CAMAS	WA	98607
986038887	4307 NW SAGE LOOP	CAMAS	WA	98607
986038888	4309 NW SAGE LOOP	CAMAS	WA	98607
986038896	4320 NW SAGE LOOP	CAMAS	WA	98607
986038897	4318 NW SAGE LOOP	CAMAS	WA	98607
986038898	4314 NW SAGE LOOP	CAMAS	WA	98607
986038899	4312 NW SAGE LOOP	CAMAS	WA	98607
986038900	4310 NW SAGE LOOP	CAMAS	WA	98607
986038901	4320 NW 20TH AVE	CAMAS	WA	98607
986038902			WA	0
986038905			WA	0
986038906			WA	0
986038907			WA	0
986038908	1940 NW SAGE ST	CAMAS	WA	98607
986038909			WA	0
986038910			WA	0
986038912			WA	0
986040280	4215 NW SAGE LOOP	CAMAS	WA	98607
986040281	4217 NW SAGE LOOP	CAMAS	WA	98607
986055381			WA	0
986055382			WA	0
986055383			WA	0

This document was created by the Clark County,
Washington Geographic Information System

Number of Records 78

Number of Pages 2

Date Created 8/28/2025

Employee 

Employee Name Jesse Manley

HANCOCK CHAD E & HANCOCK
LAUREL R
1668 NW WHITMAN ST
CAMAS, WA 98607

CROWN POINTE HOMEOWNERS
ASSOCIATION
1708 NW WHITMAN ST
CAMAS, WA 98607

DALEY DENNIS W ETAL
PO BOX 757
RANCHO SANTA FE, CA 92067

DALEY DENNIS W ETAL
PO BOX 757
RANCHO SANTA FE, CA 92067

JR MERIT ENTERPRISES LLC
4505 NE 68TH DR
VANCOUVER, WA 98661

LINEAR TECHNOLOGY CORP
1 ANALOG WAY
WILMINGTON, MA 01887

HEREFORD FARMS LLC
26 MEADOHAWK LN
LAS VEGAS, NV 89135

CAMAS SCHOOL DISTRICT #117
841 NE 22ND AVE
CAMAS, WA 98607

JR MERIT ENTERPRISES LLC
4505 NE 68TH DR
VANCOUVER, WA 98661

ERWIN JILL L
PO BOX 771
CAMAS, WA 98607

NLIGHT INC
5408 NE 88TH ST BLDG E
VANCOUVER, WA 98665

FERDASZEWSKI RACHEL A &
FERDASZEWSKI JOSHUA K
1747 NW TIDLAND ST
CAMAS, WA 98607

CITY OF CAMAS
616 NE 4TH AVE
CAMAS, WA 98607

LUGLIANI INVESTMENT COMPANY
LLC
16701 SE MCGILLIVRAY BLVD 160
VANCOUVER, WA 98684

MACKAY JOHN G
4345 NW 16TH AVE
CAMAS, WA 98607

NRP LLC
4600 NW PACIFIC RIM BLVD
CAMAS, WA 98604

CAMAS SCHOOL DISTRICT #117
841 NE 22ND AVE
CAMAS, WA 98607

BROWNING JUSTIN C & KOVARIK
DAVID K
1737 NW TIDLAND ST
CAMAS, WA 98607

BAGAL MAHESH & BAGAL
MAHESHWARI
1727 NW TIDLAND ST
CAMAS, WA 98607

KIM KYUNG J & KIM JESSICA J
TRUSTEES
THE KIM FAMILY TRUST 03/12/2021
CAMAS, WA 98607

SIRRAH HOMEOWNERS
ASSOCIATION
PO BOX 905
CAMAS, WA 98607

BITRA RATNA K & BITRA VIJAY
4072 NW 20TH AVE
CAMAS, WA 98607

LEIF BAYLEY ELIZABETH & LEIF KYLE
MICHAEL
4014 NW 20TH AVE
CAMAS, WA 98607

HPA BORROWER 2018-1 MS LLC
120 S RIVERSIDE PLZ STE 2000
CHICAGO, IL 60606

ARABI NEGAR NEMATIAN
4010 NW 20TH AVE
CAMAS, WA 98607

DUGGAL KUNAL & DEWAN UPASNA
4007 NW 20TH AVE
CAMAS, WA 98607

BEALE LINDA
4011 NW 20TH AVE
CAMAS, WA 98607

THEEDA SANDEEP & ADDAGATLA
NISHITHA
4015 NW 20TH AVE
CAMAS, WA 98607

MADUGULA ROHINI K & MADUGULA
KOMAL
4019 NW 20TH AVE
CAMAS, WA 98607

DESHPANDE SACHIN G &
DESHPANDE MONIKA S
4021 NW 20TH AVE
CAMAS, WA 98607

SMITH RICHARD J & VARTANIAN KERI
B TRUSTEES
4023 NW 20TH AVE
CAMAS, WA 98607

ZHANG JIHONG
PO BOX 56212
PORTLAND, OR 97238

CHANG WENDY
4071 NW 20TH AVE
CAMAS, WA 98607

NELSON JEFFREY
4075 NW 20TH AVE
CAMAS, WA 98607

KATES COVE HOMEOWNERS
ASSOCIATION
16420 SE MCGILLIVRAY BLVD NO 103
VANCOUVER, WA 98683

KATES CLOSE LLC
16420 SE MCGILLIVRAY BLVD
#103-197
VANCOUVER, WA 98683

KATES COVE HOMEOWNERS
ASSOCIATION
16420 SE MCGILLIVRAY BLVD NO 103
VANCOUVER, WA 98683

KATES COVE HOMEOWNERS
ASSOCIATION
16420 SE MCGILLIVRAY BLVD NO 103
VANCOUVER, WA 98683

KATES COVE HOMEOWNERS
ASSOCIATION
16420 SE MCGILLIVRAY BLVD NO 103
VANCOUVER, WA 98683

KATES COVE HOMEOWNERS
ASSOCIATION
16420 SE MCGILLIVRAY BLVD NO 103
VANCOUVER, WA 98683

CITY OF CAMAS
616 NE 4TH AVE
CAMAS, WA 98607

BARRON HATFIELD FAMILY LLLP
5511 NW 234th ST
RIDGEFIELD, WA 98642

BARRON HATFIELD FAMILY LLLP
5511 NW 234th ST
RIDGEFIELD, WA 98642

BARRON HATFIELD FAMILY LLLP
5511 NW 234th ST
RIDGEFIELD, WA 98642

BARRON HATFIELD FAMILY LLLP
5511 NW 234th ST
RIDGEFIELD, WA 98642

BARRON HATFIELD FAMILY LLLP
5511 NW 234th ST
RIDGEFIELD, WA 98642

BARRON HATFIELD FAMILY LLLP
5511 NW 234th ST
RIDGEFIELD, WA 98642

BYUN JI-HYUN TRUSTEE
PO BOX 2684
VANCOUVER, WA 98668

MORIARTY TERRA
3255 NW VALLEY ST
CAMAS, WA 98607

NOVIK NATALIIA & NOVIK OLEKSII
1843 NW SAGE ST
CAMAS, WA 98607

KAHN BARBARA
1837 NW SAGE ST
CAMAS, WA 98607

JOHNSTONE MARY HELEN
1831 NW SAGE ST
CAMAS, WA 98607

CHIA CHU-TIEN & CHIA YI-JEN
TRUSTEES
8420 SE 17TH CIR
VANCOUVER, WA 98664

CHOU YOM C & YANG WON-HUEI
2435 SUDDABY
TUSTIN, CA 92782

SHOJAEI MEHRDAD
4233 NW SAGE LOOP
CAMAS, WA 98607

PARRISH HARRY A TRUSTEE
HARRY PARRISH 2021 REV LIV TRUST
CAMAS, WA 98607

TAVADE NAVEEN
4305 NW SAGE LP
CAMAS, WA 98607

ALONZO DAVID L
16420 SE MCGILLIVRAY BLVD STE 103
PMB 437
VANCOUVER, WA 98683

SINGH HINDPREET & SINGH GURJIT
2239 NW OXFORD ST
CAMAS, WA 98607

GABRIO WILLIAM G & GABRIO JANET
I
4320 NW SAGE LOOP
CAMAS, WA 98607

BECK JACK G & BECK LOUANN M
4318 NW SAGE LP
CAMAS, WA 98607

PK CONSULTING INC
4314 NW SAGE LP
CAMAS, WA 98607

LOUMAN ELIZABETH & LOUMAN
JACK A TRUSTEES
4312 NW SAGE LP
CAMAS, WA 98607

WERRY JORJAN INGRAM TRUSTEE
4310 NW SAGE LP
CAMAS, WA 98607

CAMDAVS REALTY LLC
2219 NW SIERRA WAY
CAMAS, WA 98607

PARKER VILLAGE HOA
800 NE TENNEY RD #110-348
VANCOUVER, WA 98685

PARKER VILLAGE HOA
800 NE TENNEY RD #110-348
VANCOUVER, WA 98685

PARKER VILLAGE HOA
800 NE TENNEY RD #110-348
VANCOUVER, WA 98685

PARKER VILLAGE HOA
800 NE TENNEY RD #110-348
VANCOUVER, WA 98685

PARKER VILLAGE HOA
800 NE TENNEY RD #110-348
VANCOUVER, WA 98685

PARKER VILLAGE HOA
800 NE TENNEY RD #110-348
VANCOUVER, WA 98685

PARKER VILLAGE HOA
800 NE TENNEY RD #110-348
VANCOUVER, WA 98685

PARKER VILLAGE HOA
800 NE TENNEY RD #110-348
VANCOUVER, WA 98685

YE YING TRUSTEE
1004 NE 112TH AVE
VANCOUVER, WA 98684

WRIGHT MARC & WRIGHT SPRING
4217 NW SAGE LOOP
CAMAS, WA 98607

DALEY DENNIS W ETAL
PO BOX 757
RANCHO SANTA FE, CA 92067

CITY OF CAMAS
430 NE EVERETT ST
CAMAS, WA 98607

CITY OF CAMAS
430 NE EVERETT ST
CAMAS, WA 98607

Occupant PID 92231180
1668 NW WHITMAN ST
CAMAS, WA 98607

Occupant PID 92231182
4640 NW 18TH AVE
CAMAS, WA 98607

Occupant PID 125193000
4511 NW 18TH AVE
CAMAS, WA 98607

Occupant PID 125619000
4612 NW 18TH AVE
CAMAS, WA 98607

Occupant PID 125622000
1601 NW TIDLAND ST
CAMAS, WA 98607

Occupant PID 125631000
4516 NW 18TH AVE
CAMAS, WA 98607

Occupant PID 125651000
4637 NW 18TH AVE
CAMAS, WA 98607

Occupant PID 125663000
1747 NW TIDLAND ST
CAMAS, WA 98607

Occupant PID 127358066
1934 NW BRADY RD
CAMAS, WA 98607

Occupant PID 127367000
4345 NW 16TH AVE
CAMAS, WA 98607

Occupant PID 986033962
5125 NW NAN HENRIKSEN WAY
CAMAS, WA 98607

Occupant PID 986037028
1737 NW TIDLAND ST
CAMAS, WA 98607

Occupant PID 986037029
1727 NW TIDLAND ST
CAMAS, WA 98607

Occupant PID 986037030
1717 NW TIDLAND ST
CAMAS, WA 98607

Occupant PID 986038654
4072 NW 20TH AVE
CAMAS, WA 98607

Occupant PID 986038668
4014 NW 20TH AVE
CAMAS, WA 98607

Occupant PID 986038669
4012 NW 20TH AVE
CAMAS, WA 98607

Occupant PID 986038670
4010 NW 20TH AVE
CAMAS, WA 98607

Occupant PID 986038671
4007 NW 20TH AVE
CAMAS, WA 98607

Occupant PID 986038672
4011 NW 20TH AVE
CAMAS, WA 98607

Occupant PID 986038673
4015 NW 20TH AVE
CAMAS, WA 98607

Occupant PID 986038674
4019 NW 20TH AVE
CAMAS, WA 98607

Occupant PID 986038675
4021 NW 20TH AVE
CAMAS, WA 98607

Occupant PID 986038676
4023 NW 20TH AVE
CAMAS, WA 98607

Occupant PID 986038677
4025 NW 20TH AVE
CAMAS, WA 98607

Occupant PID 986038681
4071 NW 20TH AVE
CAMAS, WA 98607

Occupant PID 986038682
4075 NW 20TH AVE
CAMAS, WA 98607

Occupant PID 986038685
4016 NW 20TH AVE
CAMAS, WA 98607

Occupant PID 986038690
2282 NW BRADY RD
CAMAS, WA 98607

Occupant PID 986038865
1941 NW SAGE ST
CAMAS, WA 98607

Occupant PID 986038866
1935 NW SAGE ST
CAMAS, WA 98607

Occupant PID 986038867
1927 NW SAGE ST
CAMAS, WA 98607

Occupant PID 986038868
1923 NW SAGE ST
CAMAS, WA 98607

Occupant PID 986038869
1915 NW SAGE ST
CAMAS, WA 98607

Occupant PID 986038870
1911 NW SAGE ST
CAMAS, WA 98607

Occupant PID 986038871
1855 NW SAGE ST
CAMAS, WA 98607

Occupant PID 986038872
1849 NW SAGE ST
CAMAS, WA 98607

Occupant PID 986038873
1843 NW SAGE ST
CAMAS, WA 98607

Occupant PID 986038874
1837 NW SAGE ST
CAMAS, WA 98607

Occupant PID 986038875
1831 NW SAGE ST
CAMAS, WA 98607

Occupant PID 986038876
1825 NW SAGE ST
CAMAS, WA 98607

Occupant PID 986038877
1819 NW SAGE ST
CAMAS, WA 98607

Occupant PID 986038878
1811 NW SAGE ST
CAMAS, WA 98607

Occupant PID 986038879
1805 NW SAGE ST
CAMAS, WA 98607

Occupant PID 986038886
4305 NW SAGE LOOP
CAMAS, WA 98607

Occupant PID 986038887
4307 NW SAGE LOOP
CAMAS, WA 98607

Occupant PID 986038888
4309 NW SAGE LOOP
CAMAS, WA 98607

Occupant PID 986038896
4320 NW SAGE LOOP
CAMAS, WA 98607

Occupant PID 986038897
4318 NW SAGE LOOP
CAMAS, WA 98607

Occupant PID 986038898
4314 NW SAGE LOOP
CAMAS, WA 98607

Occupant PID 986038899
4312 NW SAGE LOOP
CAMAS, WA 98607

Occupant PID 986038900
4310 NW SAGE LOOP
CAMAS, WA 98607

Occupant PID 986038901
4320 NW 20TH AVE
CAMAS, WA 98607

Occupant PID 986038908
1940 NW SAGE ST
CAMAS, WA 98607

Occupant PID 986040280
4215 NW SAGE LOOP
CAMAS, WA 98607

Occupant PID 986040281
4217 NW SAGE LOOP
CAMAS, WA 98607