



TERAGAN & ASSOCIATES, INC. ARBORICULTURAL CONSULTANTS

MEMORANDUM

DATE: October 6, 2021

TO: Bjorn Brynestad (Panattoni Development Company)

FROM: Todd Prager, RCA #597, ISA Board Certified Master Arborist

RE: Tree Assessment, Removal, and Protection Recommendations for Camas Business Center

Summary

This memorandum provides tree assessment, removal, and protection recommendations for the construction of the Camas Business Center project.

Background

Panattoni Development Company is proposing to construct the Camas Business Center at 4707 NW Lake Road in Camas, Washington. The existing conditions map with existing trees is provided in Attachment 1. The proposed site plan with existing trees to be retained is provided in Attachment 2.

The assignment requested of our firm for this project was as follows:

1. Provide an assessment of the existing trees;
2. Provide recommendations for tree removal and retention based on the proposed site improvements; and
3. Provide protection recommendations for the trees to be retained.

Tree Assessment

In September and October 2021, our firm completed an assessment of the existing trees at the site. The complete inventory data is provided in the tree inventory spreadsheet in Attachment 3. The data provided for each tree includes the tree number, species (common and scientific names), trunk diameter (DBH), tree health condition, tree structural condition, pertinent comments, whether the tree was on the property to be developed, treatment (remove or retain), and tree units per Section 18.13.051 Table 2 of the Camas Code for retained trees. The tree numbers in the tree inventory in Attachment 2 correspond to the tree numbers on the plan sheets in

Attachments 1 and 2. The assessment data in the tree inventory includes the required tree survey information in Section 18.13.045 of the Camas Code.

Proposed Tree Removal

A typical minimum root protection zone allows encroachments no closer than a radius from a tree of .5 feet per inch of DBH if no more than 25 percent of the root protection zone area (estimated at one foot radius per inch of DBH) is impacted. Figure 1 illustrates this concept. This standard may need to be adjusted on a case-by-case basis due to tree health, species, root distribution, whether the tree will be impacted on multiple sides, the specific development proposed, and other factors.

Attachment 1 shows the proposed impacts for site improvements in relation to the trees. Five hundred fifty-four (559) of the 794 trees at the site are proposed for removal for the mass grading and construction of improvements as shown in Attachment 2.

Two hundred thirty-five (235) trees within the wetland areas and their associated buffers, groups of Douglas-firs at the northern edge of the site, and existing street trees along NW Lake Road will be retained. Trees on adjacent properties directly adjacent to the property lines will be further evaluated in coordination with the neighboring property owners to make a final determination as to whether they will be retained or removed.

Protection recommendations for the remaining 235 trees to be retained at the site are provided in the next section of this report.

Tree Protection Recommendations

The following recommendations apply to the trees to be retained:

- **Protection Fencing:** Establish tree protection fencing in the locations shown in Attachment 2. The intent of the tree protection fencing is to protect the minimum root protection zones of the trees to be retained as shown in Figure 1.
- **Neighboring Trees:** Trees on adjacent properties directly adjacent to the property lines should be further evaluated in coordination with the neighboring property owners to make a final determination as to whether they will be retained or removed. Property owner approval is required prior to removing trees on neighboring properties.
- **Directional Felling:** Fell the trees to be removed away from the trees to be retained so they do not contact or otherwise damage the trunks or branches of the trees to be retained. No vehicles or heavy equipment should be permitted within the tree protection zones during tree removal operations.

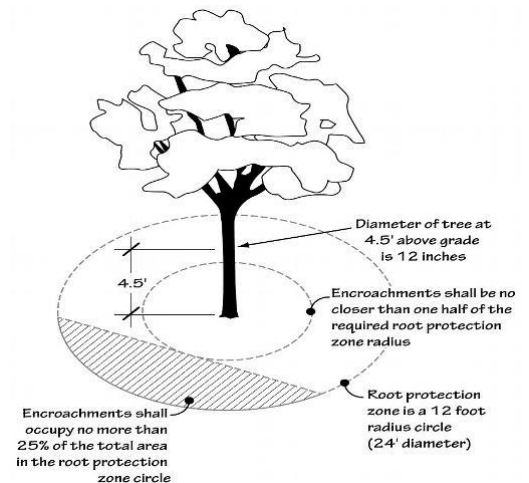


Figure 1: Typical minimum protection zone

- **Stumps in Tree Protection Zones:** The stumps of removed trees within the tree protection zones shall be flush cut and retained to minimize root disturbances of retained trees.
- **Protect Crowns of Trees:** The crowns of the trees may extend beyond the tree protection fencing. Care will need to be taken to not contact or otherwise damage the crowns of the trees during construction activities. If pruning is required, it shall be the minimum amount needed to achieve the required clearance in accordance with ANSI A300 pruning standards as directed by the project arborist.
- **Sediment Fencing:** Sediment fencing shall be installed outside the protection zones of the trees to be retained to minimize root disturbances. If erosion control is required inside the protection zones, straw wattles shall be used on the soil surface.

Attachment 4 includes additional recommendations to adequately protect the trees during construction.

Tree Density

Section 18.13.051 of the Camas Code requires 20 tree density units per net acre. The net acreage of the site is 61.23 acres (2,667,869 square feet). Therefore, 1,225 units of tree density is required.

A total of 1,068 onsite tree density units will be retained. Therefore, an additional 157 tree density units will need to be planted.

Conclusion

Five hundred fifty-nine (559) trees are proposed for removal to construct the Camas Business Center project. The 235 trees to be retained will provide 1,068 onsite tree density units. The minimum required tree density is 1,225 units, so an additional 157 tree density units are required to be planted.

Trees on adjacent properties directly adjacent to the property lines should be further evaluated in coordination with the neighboring property owners to make a final determination as to whether they will be retained or removed. Property owner approval is required prior to removing trees on neighboring properties.

Please contact me if you have questions, concerns, or need any additional information.

Sincerely,



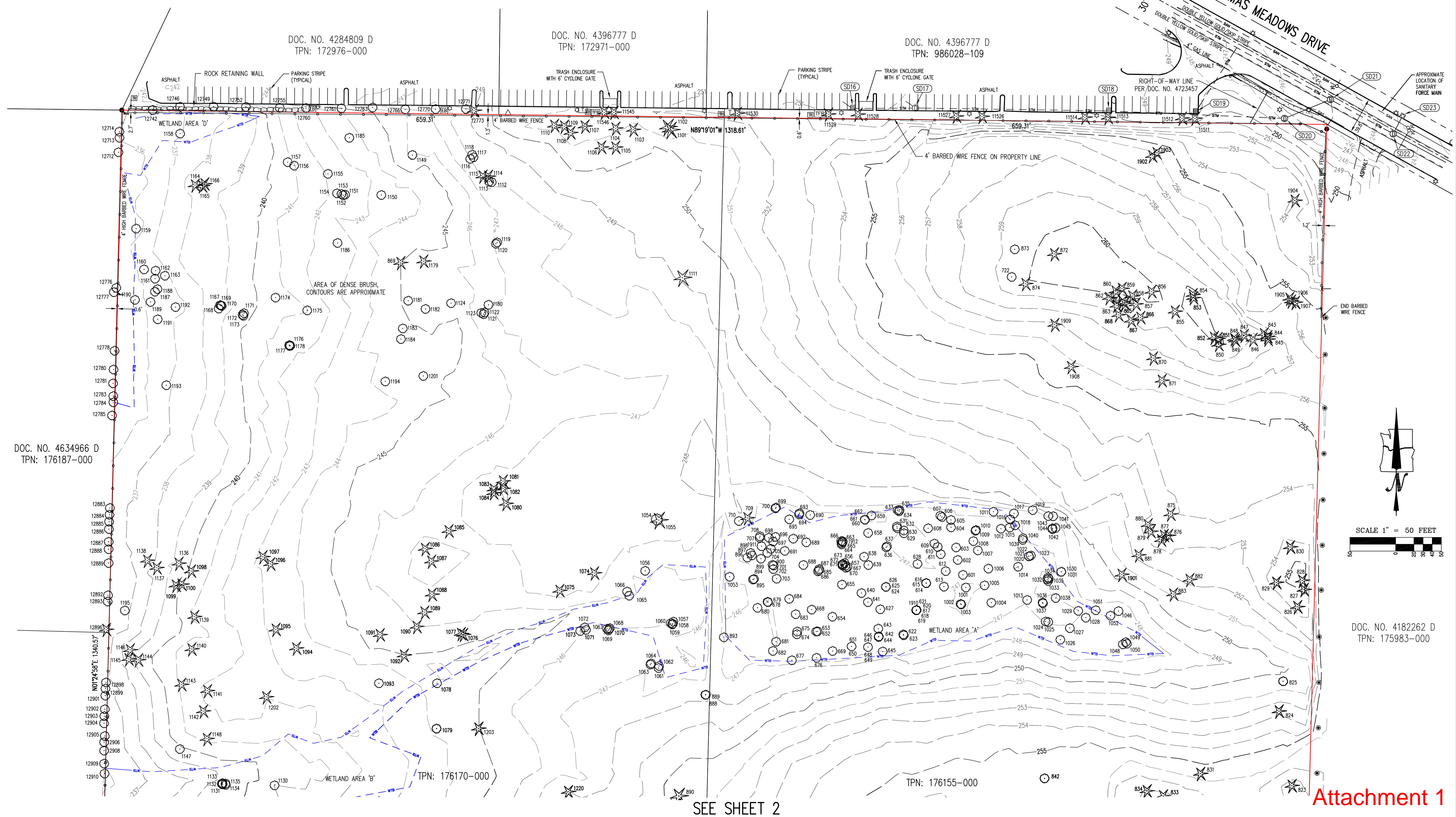
Todd Prager

*ASCA Registered Consulting Arborist #597
ISA Board Certified Master Arborist, WE-6723B
ISA Qualified Tree Risk Assessor
AICP, American Planning Association*

- Attachment 1: Existing Conditions with Existing Trees
- Attachment 2: Proposed Site Plan with Preserved Trees and Tree Protection
- Attachment 3: Tree Inventory
- Attachment 4: Additional Tree Protection Recommendations
- Attachment 5: Assumptions and Limiting Conditions

LEGEND			
DECIDUOUS TREE	STORM SEWER CLEAN OUT	TELEPHONE/TELEVISION VAULT	RIGHT-OF-WAY LINE
CONIFEROUS TREE	STORM SEWER CATCH BASIN	TELEPHONE/TELEVISION JUNCTION BOX	BOUNDARY LINE
FIRE HYDRANT	STORM SEWER COMBINATION INLET	TELEPHONE/TELEVISION RISER	PROPERTY LINE
WATER METER	STORM SEWER MANHOLE	TELEPHONE/TELEVISION MANHOLE	CENTERLINE
WATER VALVE	POWER JUNCTION BOX	SIGN	CURB
WATER VAULT	POWER TRANSFORMER	MAILBOX	EDGE OF PAVEMENT
SANITARY SEWER CLEAN OUT	GUY WIRE ANCHOR	1"-1.5" DIAMETER WOOD POLES FOR NETTING	EASEMENT
SANITARY SEWER MANHOLE	UTILITY POLE	FOUND SURVEY MONUMENT	FENCE LINE
GAS METER	POWER VAULT	RECORD INFORMATION	GRAVEL EDGE
GAS VALVE	STREET LIGHT		

STORM SEWER INFORMATION			
SD16	CATCH BASIN RIM = 250.83' 10" IN (NW) 10" OUT (E) FLOWLINE I.E. = 243.9'	SD18	CATCH BASIN RIM = 249.37' 12" IN (W) 12" OUT (E) FLOWLINE I.E. = 242.3'
SD17	MANHOLE RIM = 250.90' 10" I.E. IN (W) = 243.7' 10" I.E. IN (NW) = 243.4' 12" I.E. OUT (E) = 243.3'	SD19	CATCH BASIN RIM = 248.29' 12" I.E. OUT (NE) = 241.8'
		SD20	MANHOLE RIM = 243.53' 12" I.E. IN (W) = 241.4' 12" I.E. OUT (NE) = 241.2'
		SD21	MANHOLE RIM = 244.98' 12" IN (NW & SW) 12" OUT (SE) FLOWLINE I.E. = 240.9'
		SD22	MANHOLE RIM = 243.53' 10" I.E. IN (NE) = 239.7' 12" IN (NW) 12" OUT (SE) FLOWLINE I.E. = 239.2'
		SD23	CURB INLET RIM = 243.46' OUTLET/GRATE = 242.73' 10" I.E. OUT (SW) = 240.2'



N **S**

LOCATED IN THE SE 1/4 OF SECTION 29,
TOWNSHIP 2 NORTH, RANGE 3 EAST, W.M.,
CITY OF CAMAS,
CLARK COUNTY, WASHINGTON

TOPOGRAPHIC MAP

4707/4723 NW LAKE ROAD

CAMAS, WASHINGTON

DRAWING NO.:	2295 TOPO
SCALE:	AS NOTED
DRAWING GENERATED BY:	LD2004
DRAWN BY:	CDW
CHECKED BY:	CHS

PREPARED FOR:
PANATTORI DEVELOPMENT COMPANY, INC.
1821 DOCK STREET, SUITE 100
TACOMA, WA 98402

REVISIONS:
INITIAL RELEASE: SEPT. 28, 2021

CLINTON H. STUBBS
STATE OF WASHINGTON
REGISTERED PROFESSIONAL ENGINEER
LICENSE NO. 41081

DOC. NO. 4182262 D
TPN: 175983-000

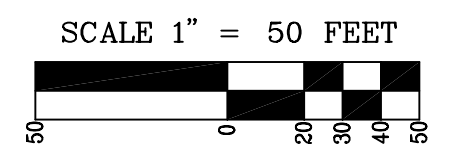
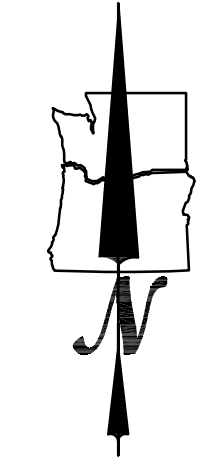
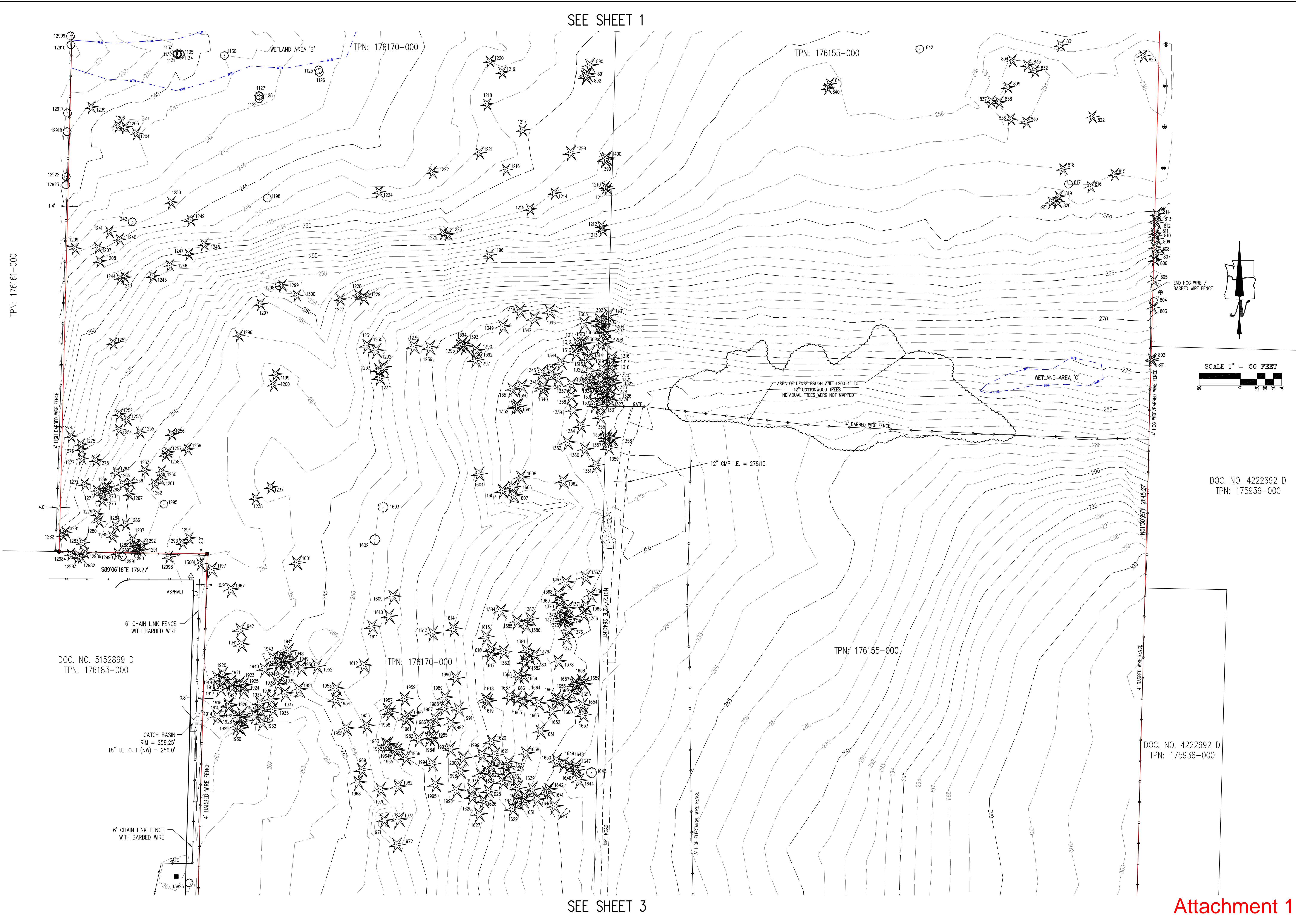
JOB NUMBER
2295

SHEET
1 OF 5

SEE SHEET 2

Attachment 1

SEE SHEET 1



DOC. NO. 4222692 D
TPN: 175936-000

DOC. NO. 4222692 D
TPN: 175936-000

DOC. NO. 5152869 D
TPN: 176183-000

SEE SHEET 3

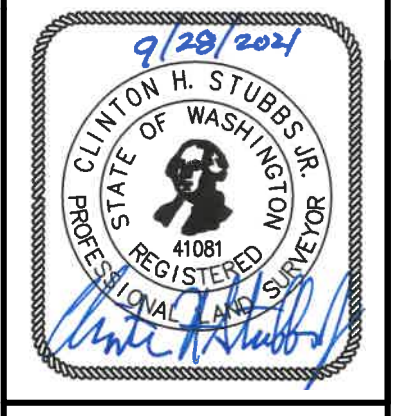
ORTHWEST SURVEYING, INC.
1815 NW 169th PLACE, SUITE 2090
BEAVERTON, OR 97006
PH: (503) 848-2127 FAX: (503) 848-2179
EMAIL: nwsurveying@nwsry.com

LOCATED IN THE SE 1/4 OF SECTION 29,
TOWNSHIP 2 NORTH, RANGE 3 EAST, WM.,
CITY OF CAMAS,
CLARK COUNTY, WASHINGTON

TOPOGRAPHIC MAP
4707/4723 NW LAKE ROAD
CAMAS, WASHINGTON

DRAWING NO.: 2295 TOPO
SCALE: AS NOTED
DRAWING GENERATED BY: LD2004
DRAWN BY: CDW
CHECKED BY: CHS
PREPARED FOR:
PANATTONI DEVELOPMENT COMPANY, INC.
1821 DOCK STREET, SUITE 100
TACOMA, WA 98402

REVISIONS:
INITIAL RELEASE: SEPT. 28 2021



JOB NUMBER
2295
SHEET
2 OF 5

Attachment 1

SEE SHEET 2



DOC. NO. 5695813 D
TPN: 176154-000

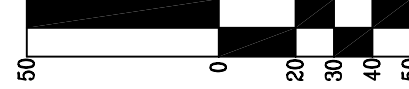
DOC. NO. 5375998 D
TPN: 176168-000

TPN: 176170-000

TPN: 176155-000

DOC. NO. 4222692 D
TPN: 175936-000

SCALE 1" = 50 FEET



SEE SHEET 4 FOR DETAIL STREET INFORMATION

SEE SHEET 4 FOR DETAIL STREET INFORMATION

Attachment 1

ORTHWEST SURVEYING, INC.
 1815 NW 169th PLACE, SUITE 2090
 BEAVERTON, OR 97006
 PH: (503) 848-2127 FAX: (503) 848-2179
 EMAIL: nwsurveying@nwsry.com

LOCATED IN THE SE 1/4 OF SECTION 29,
TOWNSHIP 2 NORTH, RANGE 3 EAST, W.M.,
CITY OF CAMAS,
CLARK COUNTY, WASHINGTON

TOPOGRAPHIC MAP

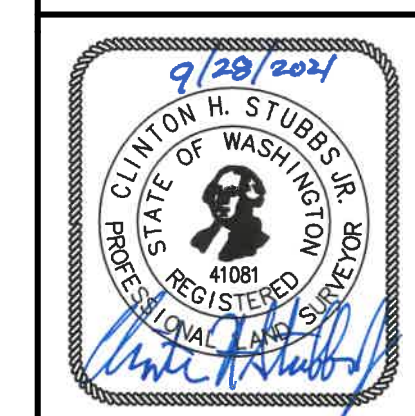
4707/4723 NW LAKE ROAD

CAMAS, WASHINGTON

DRAWING NO.:	2295 TOPO
SCALE:	AS NOTED
DRAWING GENERATED BY:	LD2004
DRAWN BY:	CDW
CHECKED BY:	CHS

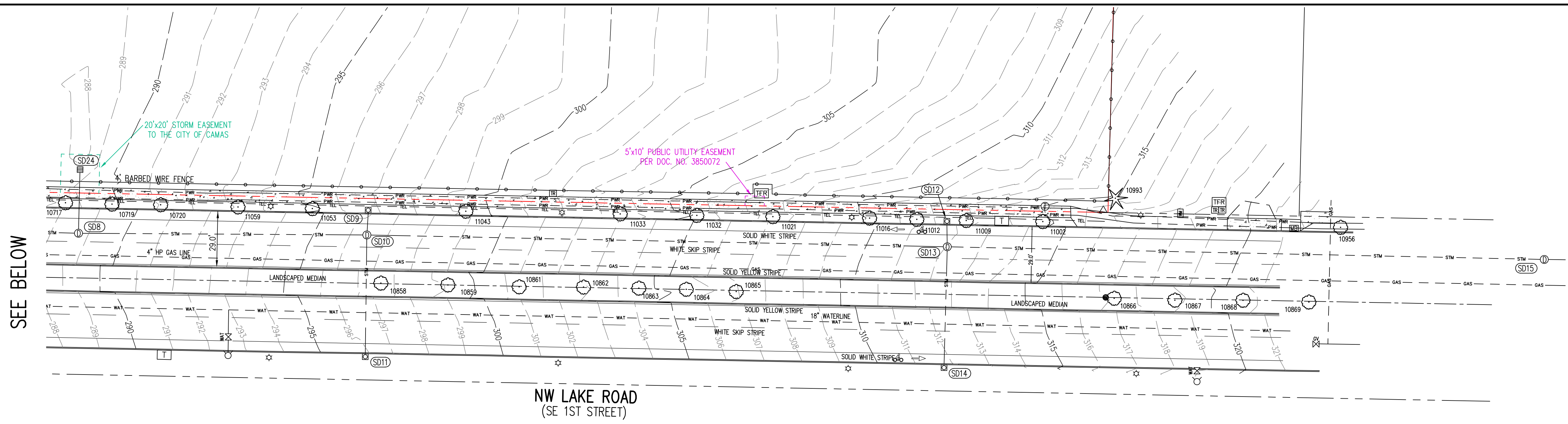
PREPARED FOR:
PANATTONI DEVELOPMENT COMPANY, INC.
1821 DOCK STREET, SUITE 100
TACOMA, WA 98402

REVISIONS:
INITIAL RELEASE: SEPT. 28, 2021



JOB NUMBER
2295

SHEET
3 OF 5



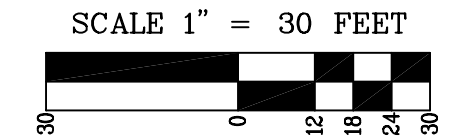
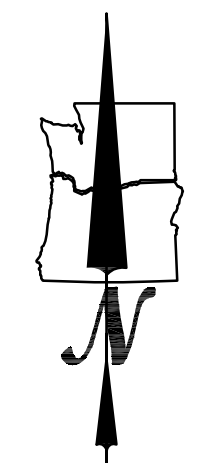
SEE BELOW

STORM SEWER INFORMATION

<p>SD1 CATCH BASIN RIM = 266.23' 10" I.E. OUT (SW) = 263.5'</p> <p>SD2 MANHOLE RIM = 266.42' 10" I.E. IN (NE) = 262.0' 10" I.E. IN (S) = 261.7' 24" I.E. IN (E) = 258.7' 24" I.E. OUT (W) = 258.5'</p> <p>SD3 CATCH BASIN RIM = 266.76' 10" IN (S) 10" OUT (N) FLOWLINE I.E. = 262.6'</p> <p>SD4 CATCH BASIN RIM = 266.30' 12" I.E. OUT (N) = 263.4'</p> <p>SD5 CURB INLET / CATCH BASIN RIM = 276.81' GUTTER/GRATE = 276.09' 10" I.E. OUT (S) = 272.4'</p>	<p>SD6 MANHOLE RIM = 276.54' 10" I.E. IN (N) = 271.0' 10" I.E. IN (S) = 271.0' 24" I.E. IN (E) = 269.8' 24" I.E. OUT (W) = 269.6'</p> <p>SD7 CURB INLET / CATCH BASIN RIM = 276.71' GUTTER/GRATE = 275.99' 10" I.E. OUT (N) = 271.2'</p> <p>SD8 MANHOLE RIM = 288.62' 10" I.E. IN (N) = 282.7' 24" IN (E) 24" OUT (W) FLOWLINE I.E. = 279.6'</p> <p>SD9 CURB INLET / CATCH BASIN RIM = 296.68' GUTTER/GRATE = 295.93' 10" I.E. OUT (S) = 292.1'</p>	<p>SD10 MANHOLE RIM = 296.39' 10" I.E. IN (N) = 290.0' 10" I.E. IN (S) = 290.4' 24" IN (E) 24" OUT (W) FLOWLINE I.E. = 286.8'</p> <p>SD11 CURB INLET / CATCH BASIN RIM = 296.73' GUTTER/GRATE = 295.99' 10" I.E. OUT (N) = 292.1'</p> <p>SD12 CURB INLET / CATCH BASIN RIM = 312.29' GUTTER/GRATE = 311.57' 10" I.E. OUT (S) = 309.0'</p> <p>SD13 MANHOLE RIM = 312.16' 10" I.E. IN (N) = 306.5' 10" I.E. IN (S) = 303.9' 24" IN (E) 24" OUT (W) FLOWLINE I.E. = 301.9'</p>	<p>SD14 CURB INLET / CATCH BASIN RIM = 312.29' GUTTER/GRATE = 311.58' 10" I.E. OUT (N) = 308.84'</p> <p>SD15 MANHOLE RIM = 328.12' 24" IN (E) 24" OUT (W) FLOWLINE I.E. = 317.32'</p> <p>SD24 DITCH INLET RIM = ±286.2' 10" I.E. OUT (S) = ±283.5'</p>
--	---	---	---

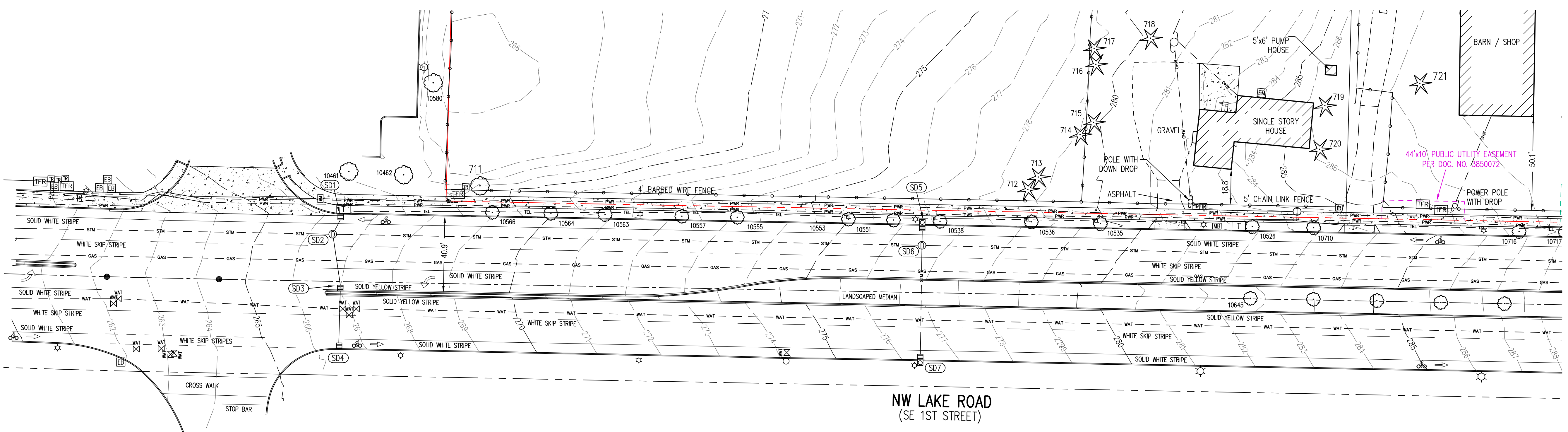
NOTES

- 1) THE FIELD SURVEY FOR THIS MAP WAS COMPLETED ON SEPTEMBER 15, 2021.
- 2) ELEVATIONS AND CONTOURS ARE BASED ON CLARK COUNTY BENCHMARK ID NUMBER 265. THE BENCHMARK IS THE SOUTHEAST CORNER OF SECTION 29, BEING A BRASS DISK IN CONCRETE WITHIN A MONUMENT CASE. THE BENCHMARK IS LOCATED IN THE CENTERLINE OF NW LAKE ROAD NEAR THE SOUTHEAST CORNER OF THE SURVEYED PROPERTY. IT HAS AN ELEVATION OF 316.85 FEET BASED ON THE NGVD 1929(47) VERTICAL DATUM.
- 3) THE WETLAND DELINEATION MARKERS WERE PROVIDED BY SOUNDVIEW CONSULTANTS LLC. FIELD TIES OF THE MARKERS WERE OBTAINED TO REPRESENT THE WETLAND BOUNDARIES OF THE SURVEYED PROPERTY.
- 4) THE BASIS OF BEARINGS FOR THIS SURVEY IS BOOK 58, PAGE 46, CLARK COUNTY SURVEY RECORDS.
- 5) THE RIGHT-OF-WAY WIDTHS WERE ESTABLISHED USING INFORMATION FROM RECORD SURVEYS AND THE TAX ASSESSOR'S MAP.
- 6) THE EASEMENTS SHOWN ON THIS MAP ARE BASED ON THE TITLE REPORT, PREPARED BY FIRST AMERICAN TITLE INSURANCE COMPANY WITH FILE NUMBER NCS-1040430-WAI AND WITH AN EFFECTIVE DATE OF NOVEMBER 18, 2020 AT 7:30 AM.
- 7) THE UNDERGROUND UTILITIES ARE BASED ON THE MARKINGS PER LOCATE TICKET NUMBERS 212004127 AND 21204165.



UTILITY STATEMENT

THE UNDERGROUND UTILITIES SHOWN HAVE BEEN LOCATED FROM FIELD SURVEY INFORMATION AND EXISTING DRAWINGS. THE SURVEYOR MAKES NO GUARANTEE THAT THE UNDERGROUND UTILITIES SHOWN COMPRISE ALL SUCH UTILITIES IN THE AREA, EITHER IN SERVICE OR ABANDONED. THE SURVEYOR FURTHER DOES NOT WARRANT THAT THE UNDERGROUND UTILITIES SHOWN ARE IN THE EXACT LOCATION INDICATED ALTHOUGH HE DOES CERTIFY THAT THEY ARE LOCATED AS ACCURATELY AS POSSIBLE FROM INFORMATION AVAILABLE. THE SURVEYOR HAS NOT PHYSICALLY LOCATED THE UNDERGROUND UTILITIES.



SEE ABOVE

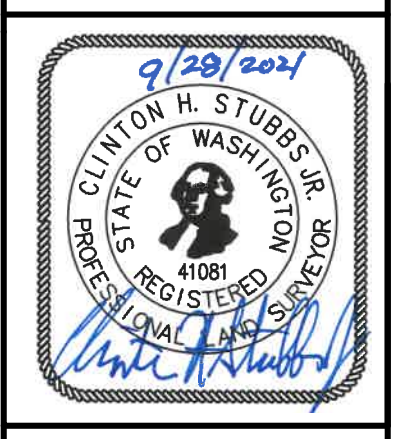
ORTHWEST SURVEYING, INC.
1815 NW 169th PLACE, SUITE 2090
BEAVERTON, OR 97006
PH: (503) 848-2127 FAX: (503) 848-2179
EMAIL: nwsurveying@wsrvy.com

LOCATED IN THE SE 1/4 OF SECTION 29,
TOWNSHIP 2 NORTH, RANGE 3 EAST, WM.,
CITY OF CAMAS,
CLARK COUNTY, WASHINGTON

TOPOGRAPHIC MAP
4707/4723 NW LAKE ROAD
CAMAS, WASHINGTON

DRAWING NO.: 2295 ALTA
SCALE: AS NOTED
DRAWING GENERATED BY: LD2004
DRAWN BY: CDW
CHECKED BY: CHS
PREPARED FOR:
PANATTONI DEVELOPMENT COMPANY, INC.
1821 DOCK STREET, SUITE 100
TACOMA, WA 98402

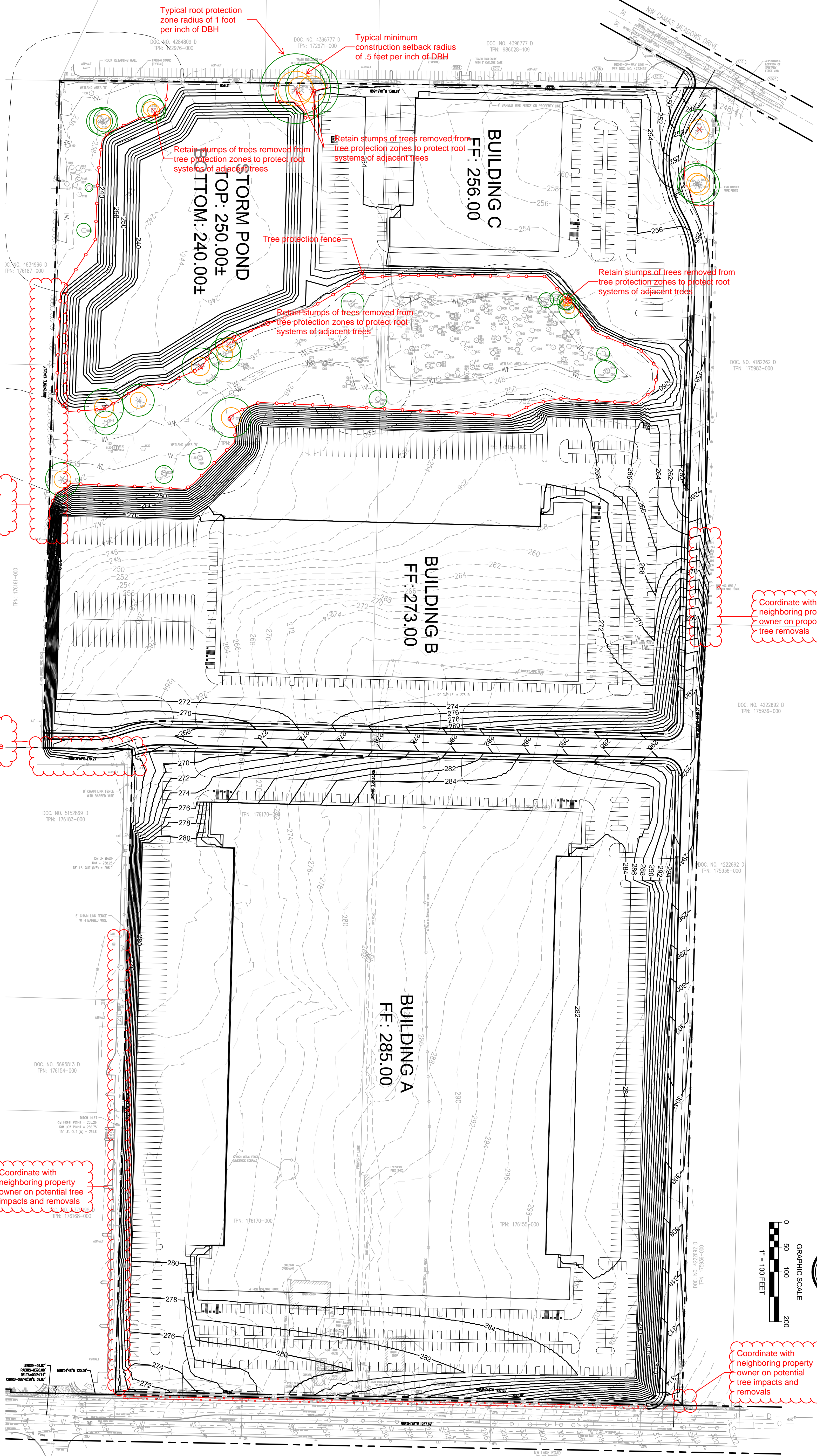
REVISIONS:
INITIAL RELEASE: SEPT. 28, 2021



JOB NUMBER
2295
SHEET
4 OF 5

Attachment 1

Attachment 2



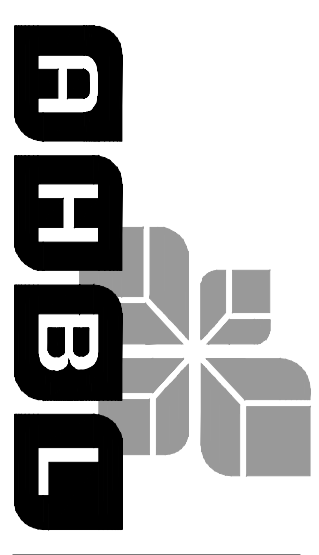
Coordinate with neighboring property owner on potential tree impacts and removals

Coordinate with neighboring property owner on potential tree impacts and removals

Coordinate with neighboring property owner on potential tree impacts and removals

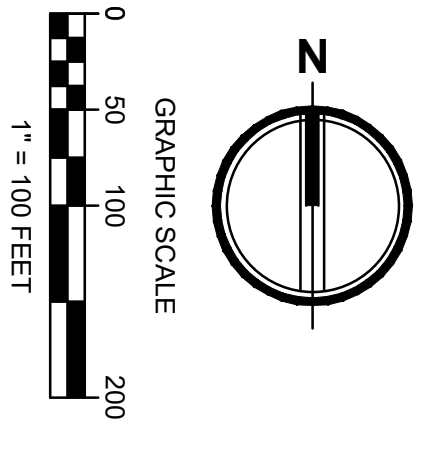
Coordinate with neighboring property owner on proposed tree removals

Coordinate with neighboring property owner on potential tree impacts and removals



2215 North 30th Street
Suite 900
Tacoma, WA 98403
253.383.2422 TEL
253.383.2572 FAX

CAMAS BUSINESS CENTER
ROUGH GRADING PLAN



JOB NO: 2200867-10
DATE: 9/30/2021
EX-A

Attachment 3

Survey Number	Existing Number	DBH ¹	Multi-stem DBH ²	Common Name	Scientific Name	Condition ³	Structure ³	Comments	Not On Property	Treatment	Tree Density Units Retained
601	601	15		Oregon ash	<i>Fraxinus latifolia</i>	Poor	Poor	Thin crown		retain	4
602	602	12		Oregon ash	<i>Fraxinus latifolia</i>	Poor	Poor	Dead top		retain	2
603	603	8		Oregon ash	<i>Fraxinus latifolia</i>	Poor	Poor	Thin crown		retain	2
604	604	11		Oregon ash	<i>Fraxinus latifolia</i>	Very Poor	Very Poor	Dead top		retain	2
605	605	9		Oregon ash	<i>Fraxinus latifolia</i>	Poor	Very Poor	Dead top		retain	2
606	606	8		Oregon ash	<i>Fraxinus latifolia</i>	Very Poor	Very Poor	Dead top		retain	2
607	607	9		Oregon ash	<i>Fraxinus latifolia</i>	Fair	Fair	Thin crown		retain	2
608	608	16		Oregon ash	<i>Fraxinus latifolia</i>	Poor	Poor	Decay in stem, dead limbs in crown		retain	4
609	609	14		Oregon ash	<i>Fraxinus latifolia</i>	Fair	Fair	Dead limbs in crown		retain	3
610	610	12		Oregon ash	<i>Fraxinus latifolia</i>	Poor	Poor	Dead limbs in crown		retain	2
611	611	13		Oregon ash	<i>Fraxinus latifolia</i>	Fair	Poor	Dead top		retain	3
612	612	17		Oregon ash	<i>Fraxinus latifolia</i>	Fair	Poor	Decay in stem		retain	5
613	613	19		Oregon ash	<i>Fraxinus latifolia</i>	Very Poor	Very Poor	Dead top		retain	6
614	614	10		Oregon ash	<i>Fraxinus latifolia</i>	Poor	Very Poor	Dead top		retain	2
615	615	8		Oregon ash	<i>Fraxinus latifolia</i>	Very Poor	Very Poor	Broken top		retain	2
616	616	7		Oregon ash	<i>Fraxinus latifolia</i>	Very Poor	Very Poor	Dead top		retain	2
617	617	10		Oregon ash	<i>Fraxinus latifolia</i>	Very Poor	Very Poor	Broken top		retain	2
618	618	17		Oregon ash	<i>Fraxinus latifolia</i>	Very Poor	Very Poor	Dead top		retain	5
619	619	14		Oregon ash	<i>Fraxinus latifolia</i>	Very Poor	Very Poor	Decay in stem		retain	3
620	620	13		Oregon ash	<i>Fraxinus latifolia</i>	Very Poor	Very Poor	Dead top		retain	3
621	621	14		Oregon ash	<i>Fraxinus latifolia</i>	Poor	Poor	Broken top		retain	3
622	622	15		Oregon ash	<i>Fraxinus latifolia</i>	Very Poor	Very Poor	Decay in stem		retain	4
623	623	16		Oregon ash	<i>Fraxinus latifolia</i>	Very Poor	Very Poor	Decay in stem		retain	4
624	624	11		Oregon ash	<i>Fraxinus latifolia</i>	Very Poor	Very Poor	Dead top		retain	2
625	625	8, 7	11	Oregon ash	<i>Fraxinus latifolia</i>	Poor	Poor	Decay in one stem		retain	2
626	626	9		Oregon ash	<i>Fraxinus latifolia</i>	Very Poor	Very Poor	Decay in stem		retain	2
627	627	32		Oregon ash	<i>Fraxinus latifolia</i>	Very Poor	Very Poor	Decay at base		retain	12
628	628	17		Oregon ash	<i>Fraxinus latifolia</i>	Fair	Fair	Thin crown		retain	5
629	629	10		Oregon ash	<i>Fraxinus latifolia</i>	Poor	Poor	Decay in stem		retain	2
630	630	12		Oregon ash	<i>Fraxinus latifolia</i>	Poor	Poor	Decay in stem and at base		retain	2
631	631	8		Oregon ash	<i>Fraxinus latifolia</i>	Poor	Poor	Decay in stem		retain	2
632	632	8		Oregon ash	<i>Fraxinus latifolia</i>	Fair	Fair	Heavy lean		retain	2
633	633	18		Oregon ash	<i>Fraxinus latifolia</i>	Fair	Fair	Heavy lean		retain	5
634	634	18		Oregon ash	<i>Fraxinus latifolia</i>	Fair	Good	Thin crown		retain	5
635	635	18		Oregon ash	<i>Fraxinus latifolia</i>	Poor	Fair	Dead limbs in crown, heavy lean		retain	5
636	636	18		Oregon ash	<i>Fraxinus latifolia</i>	Fair	Fair	Multiple stems		retain	5
637	637	12		Oregon ash	<i>Fraxinus latifolia</i>	Fair	Fair	Multiple stems		retain	2
638	638	12		Oregon ash	<i>Fraxinus latifolia</i>	Very Poor	Very Poor	Dead top		retain	2
639	639	18		Oregon ash	<i>Fraxinus latifolia</i>	Poor	Poor	Thin crown, dead limbs in crown		retain	5
640	640	14, 10	17	Oregon ash	<i>Fraxinus latifolia</i>	Poor	Poor	Decay at base, one dead stem		retain	4
641	641	16		Oregon ash	<i>Fraxinus latifolia</i>	Poor	Poor	Decay high in stem, co-dominant top		retain	4
642	642	12		Oregon ash	<i>Fraxinus latifolia</i>	Poor	Poor	Decay at base, thin crown		retain	2
643	643	20		Oregon ash	<i>Fraxinus latifolia</i>	Poor	Very Poor	Broken top		retain	6
644	644	16		Oregon ash	<i>Fraxinus latifolia</i>	Very Poor	Very Poor	Broken top		retain	4
645	645	24		Oregon ash	<i>Fraxinus latifolia</i>	Poor	Poor	Epicormic stems, poor structure		retain	8
646	646	8		Oregon ash	<i>Fraxinus latifolia</i>	Fair	Poor	Multiple stems, heavy lean		retain	2
647	647	8		Oregon ash	<i>Fraxinus latifolia</i>	Fair	Poor	Multiple stems		retain	2
648	648	36		Oregon ash	<i>Fraxinus latifolia</i>	Very Poor	Very Poor	Decay in stem		retain	14
649	649	5		Oregon ash	<i>Fraxinus latifolia</i>	Fair	Poor	Multiple stems, heavy lean		retain	1
650	650	6		Oregon ash	<i>Fraxinus latifolia</i>	Poor	Poor	Decay at base		retain	2
651	651	7		Oregon ash	<i>Fraxinus latifolia</i>	Poor	Poor	Decay at base		retain	2
652	652	5		Oregon ash	<i>Fraxinus latifolia</i>	Poor	Poor	Heavy lean, co-dominant stem at base		retain	1
653	653	15		Oregon ash	<i>Fraxinus latifolia</i>	Very Poor	Very Poor	Tree in decline		retain	4
654	654	14		Oregon ash	<i>Fraxinus latifolia</i>	Very Poor	Very Poor	Tree in decline		retain	3
655	655	22		Oregon ash	<i>Fraxinus latifolia</i>	Fair	Poor	Decay in stem, dead limbs in crown		retain	7
656	656	9		Oregon ash	<i>Fraxinus latifolia</i>	Poor	Poor	Decay in stem, thin crown		retain	2
657	657	17		Oregon ash	<i>Fraxinus latifolia</i>	Very Poor	Very Poor	Broken stem, decay in stem		retain	5
658	658	13		Oregon ash	<i>Fraxinus latifolia</i>	Poor	Poor	Decay in stem		retain	3

Attachment 3

Survey Number	Existing Number	DBH ¹	Multi-stem DBH ²	Common Name	Scientific Name	Condition ³	Structure ³	Comments	Not On Property	Treatment	Tree Density Units Retained
659	659	18		Oregon ash	<i>Fraxinus latifolia</i>	Good	Good			retain	5
660	660	7		Oregon ash	<i>Fraxinus latifolia</i>	Good	Fair	Multi stem with included bark		retain	2
661	661	9		Oregon ash	<i>Fraxinus latifolia</i>	Good	Fair	Multi stem with included bark		retain	2
662	662	10		Oregon ash	<i>Fraxinus latifolia</i>	Good	Fair	Multi stem with included bark		retain	2
663	663	11		Oregon ash	<i>Fraxinus latifolia</i>	Poor	Very Poor	Broken top		retain	2
664	664	12		Oregon ash	<i>Fraxinus latifolia</i>	Very poor	Very poor	Multiple stems, decay in stem		retain	2
665	665	8		Oregon ash	<i>Fraxinus latifolia</i>	Poor	Poor	Dead top		retain	2
666	666	11		Oregon ash	<i>Fraxinus latifolia</i>	Very poor	Very poor	Decay in stem		retain	2
667	667	10		Oregon ash	<i>Fraxinus latifolia</i>	Very Poor	Very Poor	Dead top		retain	2
668	668	18		Oregon ash	<i>Fraxinus latifolia</i>	Fair	Fair	Thin crown		retain	5
669	669	20, 13	24	Oregon ash	<i>Fraxinus latifolia</i>	Poor	Poor	Thin crown, co-dominant stem with included bark		retain	8
670	670	8		Oregon ash	<i>Fraxinus latifolia</i>	Poor	Poor	Broken top		retain	2
671	671	7		Oregon ash	<i>Fraxinus latifolia</i>	Very Poor	Very Poor	Decay in stem		retain	2
672	672	7		Oregon ash	<i>Fraxinus latifolia</i>	Very Poor	Very Poor	Broken top		retain	2
673	673	15		Oregon ash	<i>Fraxinus latifolia</i>	Poor	Poor	Decay in stem, heavy lean		retain	4
674	674	14		Oregon ash	<i>Fraxinus latifolia</i>	Very Poor	Very Poor	Dead top		retain	3
675	675	11		Oregon ash	<i>Fraxinus latifolia</i>	Poor	Fair	Dead limbs in crown		retain	2
676	676	20		Oregon ash	<i>Fraxinus latifolia</i>	Fair	Fair	Co-dominant top, necrotic leaves in crown		retain	6
677	677	25		Oregon ash	<i>Fraxinus latifolia</i>	Good	Fair	Over extended limbs		retain	9
678	678	13		Oregon ash	<i>Fraxinus latifolia</i>	Fair	Fair	Co-dominant stem, thin crown		retain	3
679	679	11		Oregon ash	<i>Fraxinus latifolia</i>	Dead	Dead			retain	2
680	680	13		Oregon ash	<i>Fraxinus latifolia</i>	Fair	Fair	Broken limbs in crown		retain	3
681	681	14		Oregon ash	<i>Fraxinus latifolia</i>	Fair	Poor	Decay in stem		retain	3
682	682	22		Oregon ash	<i>Fraxinus latifolia</i>	Very Poor	Very Poor	Dead top		retain	7
683	683	12		Oregon ash	<i>Fraxinus latifolia</i>	Fair	Poor	Decay at base		retain	2
684	684	13		Oregon ash	<i>Fraxinus latifolia</i>	Fair	Fair	Multiple bark inclusions		retain	3
685	685	11		Oregon ash	<i>Fraxinus latifolia</i>	Poor	Poor	Dead top		retain	2
686	686	9		Oregon ash	<i>Fraxinus latifolia</i>	Poor	Poor	Decay in stem		retain	2
687	687	17		Oregon ash	<i>Fraxinus latifolia</i>	Fair	Poor	Decay in stem		retain	5
688	688	16		Oregon ash	<i>Fraxinus latifolia</i>	Fair	Fair	Over extended limbs		retain	4
689	689	26		Oregon ash	<i>Fraxinus latifolia</i>	Poor	Very Poor	Co-dominant stem with included bark, one stem in heavy decline		retain	9
690	690	20		Oregon ash	<i>Fraxinus latifolia</i>	Fair	Poor	Dead top		retain	6
691	691	15		Oregon ash	<i>Fraxinus latifolia</i>	Good	Fair	Co-dominant top		retain	4
692	692	14		Oregon ash	<i>Fraxinus latifolia</i>	Very Poor	Very Poor	Decay in stem		retain	3
693	693	11		Oregon ash	<i>Fraxinus latifolia</i>	Poor	Poor	Decay at base, heavy lean		retain	2
694	694	13		Oregon ash	<i>Fraxinus latifolia</i>	Very Poor	Very Poor	Decay at base		retain	3
695	695	13		Oregon ash	<i>Fraxinus latifolia</i>	Good	Poor	Decay in stem		retain	3
696	696	9		Oregon ash	<i>Fraxinus latifolia</i>	Very Poor	Very Poor	Tree in decline		retain	2
697	697	9		Oregon ash	<i>Fraxinus latifolia</i>	Good	Fair	Low dead limb		retain	2
698	698	8		Oregon ash	<i>Fraxinus latifolia</i>	Very Poor	Very Poor	Dead top		retain	2
699	699	15		Oregon ash	<i>Fraxinus latifolia</i>	Fair	Fair	Co-dominant stem, thin crown		retain	4
700	700	12		Oregon ash	<i>Fraxinus latifolia</i>	Fair	Fair	Co-dominant stem, thin crown		retain	2
701	701	10		Oregon ash	<i>Fraxinus latifolia</i>	Good	Fair	Co-dominant stem at base		retain	2
702	702	7		Oregon ash	<i>Fraxinus latifolia</i>	Poor	Very Poor	Decay in stem		retain	2
703	703	20		Oregon ash	<i>Fraxinus latifolia</i>	Poor	Poor	Thin crown, co-dominant top		retain	6
704	704	9		Oregon ash	<i>Fraxinus latifolia</i>	Fair	Good	Thin crown		retain	2
705	705	9		Oregon ash	<i>Fraxinus latifolia</i>	Good	Good			retain	2
707	707	7		Oregon ash	<i>Fraxinus latifolia</i>	Good	Fair	Co-dominant stem with included bark		retain	2
708	708	15		Oregon ash	<i>Fraxinus latifolia</i>	Good	Poor	Dead snag hung up in crown		retain	4
709	709	19		Douglas-fir	<i>Pseudotsuga menziesii</i>	Good	Good			retain	6
710	710	50		Oregon white oak	<i>Quercus garryana</i>	Good	Fair	Decay in stem at base		retain	21
723	723	6, 6, 10, 10, 7	18	Oregon ash	<i>Fraxinus latifolia</i>	Poor	Poor	Thin crown, multiple stems with decay		remove	0
801	801	24		Douglas-fir	<i>Pseudotsuga menziesii</i>	Good	Good	Tree on other side of barbed wire fence	Not On Property	remove	0
802	802	22		Douglas-fir	<i>Pseudotsuga menziesii</i>	Good	Good	Tree on other side of barbed wire fence	Not On Property	remove	0
803	803	23		Douglas-fir	<i>Pseudotsuga menziesii</i>	Good	Fair	Tree on other side of barbed wire fence, co-dominant top	Not On Property	remove	0
803.1		15		Douglas-fir	<i>Pseudotsuga menziesii</i>	Dead	Dead	Tree on other side of barbed wire fence	Not On Property	remove	0
804	804	12		red alder	<i>Alnus rubra</i>	Fair	Poor	Tree on other side of barbed wire fence, crack in stem	Not On Property	remove	0

Attachment 3

Survey Number	Existing Number	DBH ¹	Multi-stem DBH ²	Common Name	Scientific Name	Condition ³	Structure ³	Comments	Not On Property	Treatment	Tree Density Units Retained
804.1		12		red alder	<i>Alnus rubra</i>	Dead	Dead	Tree on other side of barbed wire fence	Not On Property	remove	0
805	805	27		Douglas-fir	<i>Pseudotsuga menziesii</i>	Good	Good			remove	0
806	806	18		Douglas-fir	<i>Pseudotsuga menziesii</i>	Good	Good			remove	0
807	807	18		Douglas-fir	<i>Pseudotsuga menziesii</i>	Good	Good			remove	0
808	808	21		Douglas-fir	<i>Pseudotsuga menziesii</i>	Good	Good			remove	0
809	809	15		Douglas-fir	<i>Pseudotsuga menziesii</i>	Good	Good			remove	0
810	810	13		Douglas-fir	<i>Pseudotsuga menziesii</i>	Good	Good			remove	0
811	811	7		Douglas-fir	<i>Pseudotsuga menziesii</i>	Good	Good			remove	0
812	812	12		Douglas-fir	<i>Pseudotsuga menziesii</i>	Good	Good			remove	0
813	813	13		Douglas-fir	<i>Pseudotsuga menziesii</i>	Good	Good			remove	0
814	814	23		Douglas-fir	<i>Pseudotsuga menziesii</i>	Good	Good			remove	0
815	815	32		Douglas-fir	<i>Pseudotsuga menziesii</i>	Good	Good			remove	0
816	816	40		Douglas-fir	<i>Pseudotsuga menziesii</i>	Good	Good			remove	0
817	817	15		Oregon white oak	<i>Quercus garryana</i>	Good	Good			remove	0
818	818	28		Douglas-fir	<i>Pseudotsuga menziesii</i>	Good	Fair	Old torsion crack in stem at base		remove	0
819	819	32		Douglas-fir	<i>Pseudotsuga menziesii</i>	Good	Fair	Blackberry covering base		remove	0
820	820	23		Douglas-fir	<i>Pseudotsuga menziesii</i>	Fair	Poor	Decay at base on south side		remove	0
821	821	22		Douglas-fir	<i>Pseudotsuga menziesii</i>	Good	Fair	Blackberry covering base		remove	0
822	822	40		Douglas-fir	<i>Pseudotsuga menziesii</i>	Good	Good			remove	0
823	823	58		Douglas-fir	<i>Pseudotsuga menziesii</i>	Good	Fair	Co-dominant stem with included bark at base		remove	0
824	824	39		Douglas-fir	<i>Pseudotsuga menziesii</i>	Dead	Dead			remove	0
825	825	25		Oregon ash	<i>Fraxinus latifolia</i>	Poor	Poor	Broken limbs in canopy, epicormic growth in crown, over extended limbs		remove	0
826	826	27		Douglas-fir	<i>Pseudotsuga menziesii</i>	Fair	Fair	Pitch streamers at base, dead limbs in crown		remove	0
827	827	32		Douglas-fir	<i>Pseudotsuga menziesii</i>	Good	Fair	Broken limb in crown		remove	0
828	828	33, 17	37	Douglas-fir	<i>Pseudotsuga menziesii</i>	Poor	Poor	Co-dominant stem at base, dead top in larger stem		remove	0
829	829	40		Douglas-fir	<i>Pseudotsuga menziesii</i>	Good	Good			remove	0
830	830	42		Douglas-fir	<i>Pseudotsuga menziesii</i>	Good	Good			remove	0
831	831	40		Douglas-fir	<i>Pseudotsuga menziesii</i>	Good	Fair	Tree visually assessed, blackberry covering base		remove	0
832	832	39		Douglas-fir	<i>Pseudotsuga menziesii</i>	Fair	Fair	Thin crown, blackberry covering base		remove	0
833	833	29		Douglas-fir	<i>Pseudotsuga menziesii</i>	Good	Good			remove	0
834	834	31		Douglas-fir	<i>Pseudotsuga menziesii</i>	Fair	Fair	Swelling at base next to hazelnut group		remove	0
835	835	28		Douglas-fir	<i>Pseudotsuga menziesii</i>	Good	Fair	Blackberry covering base		remove	0
835.1		25		red alder	<i>Alnus rubra</i>	Dead	Dead			remove	0
836	836	28		Douglas-fir	<i>Pseudotsuga menziesii</i>	Fair	Fair	Blackberry covering base		remove	0
837	837	23		Douglas-fir	<i>Pseudotsuga menziesii</i>	Fair	Poor	Contorted stem at 20'		remove	0
838	838	31		Douglas-fir	<i>Pseudotsuga menziesii</i>	Good	Fair	Co-dominant top		remove	0
839	839	30		Douglas-fir	<i>Pseudotsuga menziesii</i>	Fair	Fair	Thin crown		remove	0
840	840	25		Douglas-fir	<i>Pseudotsuga menziesii</i>	Good	Good			remove	0
841	841	27		Douglas-fir	<i>Pseudotsuga menziesii</i>	Good	Good			remove	0
843	843	31		Douglas-fir	<i>Pseudotsuga menziesii</i>	Good	Good			remove	0
844	844	22		Douglas-fir	<i>Pseudotsuga menziesii</i>	Good	Fair	Co-dominant stem at base		remove	0
845	845	29		Douglas-fir	<i>Pseudotsuga menziesii</i>	Good	Fair	Co-dominant stem at base		remove	0
846	846	27		Douglas-fir	<i>Pseudotsuga menziesii</i>	Good	Good			remove	0
847	847	36		Douglas-fir	<i>Pseudotsuga menziesii</i>	Good	Good			remove	0
848	848	33		Douglas-fir	<i>Pseudotsuga menziesii</i>	Good	Fair	Co-dominant stem at base with included bark, sap sucker damage at base		remove	0
849	849	24		Douglas-fir	<i>Pseudotsuga menziesii</i>	Good	Fair	Co-dominant stem at base with included bark, sap sucker damage at base		remove	0
850	850	30		Douglas-fir	<i>Pseudotsuga menziesii</i>	Good	Good			remove	0
851	851	36		Douglas-fir	<i>Pseudotsuga menziesii</i>	Good	Good			remove	0
852	852	31		Douglas-fir	<i>Pseudotsuga menziesii</i>	Good	Good			remove	0
853	853	29		Douglas-fir	<i>Pseudotsuga menziesii</i>	Good	Fair	Co-dominant stem at base		remove	0
854	854	33		Douglas-fir	<i>Pseudotsuga menziesii</i>	Good	Fair	Co-dominant stem at base		remove	0
855	855	35		Douglas-fir	<i>Pseudotsuga menziesii</i>	Good	Good			remove	0
856	856	37		Douglas-fir	<i>Pseudotsuga menziesii</i>	Good	Good			remove	0
857	857	32		Douglas-fir	<i>Pseudotsuga menziesii</i>	Good	Good			remove	0
858	858	25		Douglas-fir	<i>Pseudotsuga menziesii</i>	Good	Good			remove	0
859	859	27		Douglas-fir	<i>Pseudotsuga menziesii</i>	Good	Good			remove	0
860	860	42		Douglas-fir	<i>Pseudotsuga menziesii</i>	Good	Good			remove	0

Attachment 3

Survey Number	Existing Number	DBH ¹	Multi-stem DBH ²	Common Name	Scientific Name	Condition ³	Structure ³	Comments	Not On Property	Treatment	Tree Density Units Retained
861	861	8		Douglas-fir	<i>Pseudotsuga menziesii</i>	Very Poor	Very Poor	Red ring rot, tree in decline		remove	0
862	862	42		Douglas-fir	<i>Pseudotsuga menziesii</i>	Good	Fair	Co-dominant top		remove	0
863	863	25		Douglas-fir	<i>Pseudotsuga menziesii</i>	Good	Good			remove	0
864	864	9		Douglas-fir	<i>Pseudotsuga menziesii</i>	Good	Good			remove	0
865	865	23		Douglas-fir	<i>Pseudotsuga menziesii</i>	Good	Good			remove	0
866	866	35		Douglas-fir	<i>Pseudotsuga menziesii</i>	Good	Good			remove	0
867	867	34		Douglas-fir	<i>Pseudotsuga menziesii</i>	Good	Good			remove	0
868	868	30		Douglas-fir	<i>Pseudotsuga menziesii</i>	Good	Fair	Contorted stem at 15'		remove	0
869	869	33		Douglas-fir	<i>Pseudotsuga menziesii</i>	Good	Good			remove	0
870	870	37		Douglas-fir	<i>Pseudotsuga menziesii</i>	Good	Good			remove	0
871	871	45		Douglas-fir	<i>Pseudotsuga menziesii</i>	Good	Fair	Over extended limbs		remove	0
872	872	43		Douglas-fir	<i>Pseudotsuga menziesii</i>	Good	Good			remove	0
873	873	8, 8	11	English hawthorn	<i>Crataegus monogyna</i>	Good	Poor	Co-dominant stem at base, blackberry growing into crown		remove	0
874	874	51		Douglas-fir	<i>Pseudotsuga menziesii</i>	Good	Fair	Torsion crack visible at 35'		remove	0
875	875	42		Douglas-fir	<i>Pseudotsuga menziesii</i>	Good	Good			remove	0
876	876	28		Douglas-fir	<i>Pseudotsuga menziesii</i>	Good	Good			remove	0
877	877	27		Douglas-fir	<i>Pseudotsuga menziesii</i>	Good	Good			remove	0
878	878	34		Douglas-fir	<i>Pseudotsuga menziesii</i>	Good	Good			remove	0
879	879	35		Douglas-fir	<i>Pseudotsuga menziesii</i>	Good	Good			remove	0
880	880	29		Douglas-fir	<i>Pseudotsuga menziesii</i>	Good	Good			remove	0
881	881	33		Douglas-fir	<i>Pseudotsuga menziesii</i>	Fair	Fair	Thin crown		remove	0
882	882	41		Douglas-fir	<i>Pseudotsuga menziesii</i>	Dead	Dead			remove	0
883	883	42		Douglas-fir	<i>Pseudotsuga menziesii</i>	Good	Good			remove	0
888	888	13		Oregon ash	<i>Fraxinus latifolia</i>	Fair	Poor	Decay in stem, included bark		retain	3
889	889	18		Oregon ash	<i>Fraxinus latifolia</i>	Good	Good			retain	5
890	890	38		Douglas-fir	<i>Pseudotsuga menziesii</i>	Good	Fair	Seam with decay in stem at 20'		remove	0
891	891	36		Douglas-fir	<i>Pseudotsuga menziesii</i>	Good	Fair	Co-dominant stem at base		remove	0
892	892	27		Douglas-fir	<i>Pseudotsuga menziesii</i>	Good	Fair	Co-dominant stem		remove	0
893	893	27		Oregon ash	<i>Fraxinus latifolia</i>	Good	Fair	Cavity at base		retain	10
894	894	10, 8	13	Oregon ash	<i>Fraxinus latifolia</i>	Very Poor	Very Poor	Decay in stems		retain	3
895	895	13		Oregon ash	<i>Fraxinus latifolia</i>	Fair	Very Poor	Decay in stem		retain	3
896	896	7		crab apple	<i>Malus sp.</i>	Poor	Poor	Thin crown, decay in stem		retain	2
897	897	10		Oregon ash	<i>Fraxinus latifolia</i>	Very Poor	Very Poor	Tree in decline		retain	2
898	898	7		Oregon ash	<i>Fraxinus latifolia</i>	Poor	Poor	Decay in stem		retain	2
899	899	9		Oregon ash	<i>Fraxinus latifolia</i>	Poor	Poor	Heavy lean, thin crown		retain	2
900	900	7		Oregon ash	<i>Fraxinus latifolia</i>	Poor	Very Poor	Dead top		remove	0
1001	1001	15		Oregon ash	<i>Fraxinus latifolia</i>	Poor	Poor	Broken top		retain	4
1001.1		18, 18, 10, 13	30	Oregon ash	<i>Fraxinus latifolia</i>	Very Poor	Very Poor	Group of short dead stems		retain	11
1002	1002	16		Oregon ash	<i>Fraxinus latifolia</i>	Very Poor	Very Poor	Dead top		retain	4
1003	1003	13		Oregon ash	<i>Fraxinus latifolia</i>	Very Poor	Very Poor	Broken top		retain	3
1004	1004	24		Oregon ash	<i>Fraxinus latifolia</i>	Very Poor	Very Poor	Tree in heavy decline		retain	8
1005	1005	13		Oregon ash	<i>Fraxinus latifolia</i>	Poor	Poor	Decay in stem		retain	3
1006	1006	13		Oregon ash	<i>Fraxinus latifolia</i>	Very Poor	Very Poor	Tree in decline		retain	3
1007	1007	7		Oregon ash	<i>Fraxinus latifolia</i>	Very Poor	Very Poor	Tree in decline		retain	2
1008	1008	9		Oregon ash	<i>Fraxinus latifolia</i>	Poor	Poor	Tree in decline		retain	2
1009	1009	17		Oregon ash	<i>Fraxinus latifolia</i>	Very Poor	Very Poor	Dead top		retain	5
1010	1010	11		Oregon ash	<i>Fraxinus latifolia</i>	Dead	Dead			retain	2
1011	1011	22		Oregon ash	<i>Fraxinus latifolia</i>	Fair	Very Poor	Decay in stem, heavy lean		retain	7
1012	1012	12		Oregon ash	<i>Fraxinus latifolia</i>	Poor	Very poor	Decay at base, dead top		retain	2
1013	1013	12		Oregon ash	<i>Fraxinus latifolia</i>	Very Poor	Very Poor	Decay at base, tree in decline		retain	2
1014	1014	16		Oregon ash	<i>Fraxinus latifolia</i>	Very Poor	Very Poor	Tree in decline		retain	4
1015	1015	11		Oregon ash	<i>Fraxinus latifolia</i>	Very Poor	Very Poor	Decay in stem		retain	2
1017	1017	15		Oregon ash	<i>Fraxinus latifolia</i>	Good	Poor	Over extended limbs		retain	4
1018	1018	7		Oregon ash	<i>Fraxinus latifolia</i>	Very Poor	Very Poor	Dead top		retain	2
1019	1019	13		Oregon ash	<i>Fraxinus latifolia</i>	Fair	Fair	Broken limb in crown, thin crown		retain	3
1020	1020	8		Oregon ash	<i>Fraxinus latifolia</i>	Very Poor	Very Poor	Decay at base		retain	2
1021	1021	6		Oregon ash	<i>Fraxinus latifolia</i>	Very Poor	Very Poor	Decay at base		retain	2

Attachment 3

Survey Number	Existing Number	DBH ¹	Multi-stem DBH ²	Common Name	Scientific Name	Condition ³	Structure ³	Comments	Not On Property	Treatment	Tree Density Units Retained
1022	1022	7		Oregon ash	<i>Fraxinus latifolia</i>	Very Poor	Very Poor	Decay at base		retain	2
1023	1023	7		Oregon ash	<i>Fraxinus latifolia</i>	Very Poor	Very Poor	Decaying stem		retain	2
1024	1024	30		Oregon ash	<i>Fraxinus latifolia</i>	Very Poor	Very Poor	Tree in decline, decay at base		retain	11
1025	1025	11		Oregon ash	<i>Fraxinus latifolia</i>	Fair	Poor	Heavy lean		retain	2
1026	1026	22		Oregon ash	<i>Fraxinus latifolia</i>	Very Poor	Very Poor	Dead top		retain	7
1027	1027	20		Oregon ash	<i>Fraxinus latifolia</i>	Very Poor	Very Poor	Dead top		retain	6
1028	1028	14		Oregon ash	<i>Fraxinus latifolia</i>	Very Poor	Very Poor	Dead top		retain	3
1029	1029	18		Oregon ash	<i>Fraxinus latifolia</i>	Very Poor	Very Poor	Dead top		retain	5
1030	1030	9		hawthorn	<i>Crataegus monogyna</i>	Fair	Poor	Co-dominant stem with included bark		retain	2
1031	1031	5		hawthorn	<i>Crataegus monogyna</i>	Fair	Poor	Co-dominant stem with included bark		retain	1
1033	1033	8		Oregon ash	<i>Fraxinus latifolia</i>	Good	Poor	Heavy lean		retain	2
1034	1034	15		Oregon ash	<i>Fraxinus latifolia</i>	Very Poor	Very Poor	Dead top		retain	4
1035	1035	16		Oregon ash	<i>Fraxinus latifolia</i>	Very Poor	Very Poor	Hollow stem		retain	4
1036	1036	16		Oregon ash	<i>Fraxinus latifolia</i>	Very Poor	Very Poor	Dead top		retain	4
1037	1037	12		Oregon ash	<i>Fraxinus latifolia</i>	Very Poor	Very Poor	Dead top		retain	2
1038	1038	11		Oregon ash	<i>Fraxinus latifolia</i>	Poor	Poor	Broken dead top		retain	2
1039	1039	7		Oregon ash	<i>Fraxinus latifolia</i>	Very Poor	Very Poor	Dead top		retain	2
1040	1040	11		Oregon ash	<i>Fraxinus latifolia</i>	Very Poor	Very Poor	Dead top		retain	2
1041	1041	16		Oregon ash	<i>Fraxinus latifolia</i>	Poor	Poor	Decay at base		remove	0
1042	1042	18		Oregon ash	<i>Fraxinus latifolia</i>	Good	Fair	Co-dominant stem at base, co-dominant top		retain	5
1043	1043	16		Oregon ash	<i>Fraxinus latifolia</i>	Poor	Fair	Thin crown		remove	0
1044	1044	8		Oregon ash	<i>Fraxinus latifolia</i>	Fair	Fair	Co-dominant stem at base		retain	2
1045	1045	21		Oregon ash	<i>Fraxinus latifolia</i>	Very Poor	Very Poor	Dead top		retain	7
1046	1046	13		Oregon ash	<i>Fraxinus latifolia</i>	Very Poor	Very Poor	Half of stem is dead		retain	3
1048	1048	22		Oregon ash	<i>Fraxinus latifolia</i>	Very Poor	Very Poor	Heavy lean with shear plane crack, broken top		retain	7
1049	1049	6		Oregon ash	<i>Fraxinus latifolia</i>	Good	Poor	Multiple stems at base, co-dominant top		retain	2
1050	1050	6		Oregon ash	<i>Fraxinus latifolia</i>	Good	Fair	Multiple stems at base		retain	2
1051	1051	16		Oregon ash	<i>Fraxinus latifolia</i>	Good	Fair	Co-dominant top		retain	4
1052	1052	24		Oregon ash	<i>Fraxinus latifolia</i>	Fair	Fair	Thin crown, co-dominant top		retain	8
1052.1		13		Oregon ash	<i>Fraxinus latifolia</i>	Very Poor	Very Poor	Cavity in stem at base		retain	3
1053	1053	20		Oregon ash	<i>Fraxinus latifolia</i>	Good	Fair	Over extended limbs		retain	6
1054	1054	18		red alder	<i>Alnus rubra</i>	Dead	Dead	Dead		retain	5
1055	1055	23		Douglas-fir	<i>Pseudotsuga menziesii</i>	Good	Good			retain	8
1056	1056	24		Oregon ash	<i>Fraxinus latifolia</i>	Fair	Fair	Large broken limbs		retain	8
1057	1057	22		Oregon ash	<i>Fraxinus latifolia</i>	Fair	Fair	Multi stem with included bark		retain	7
1058	1058	14		Oregon ash	<i>Fraxinus latifolia</i>	Fair	Fair	Multi stem with included bark		retain	3
1059		6		Oregon ash	<i>Fraxinus latifolia</i>	Fair	Fair	Multi stem with included bark		retain	2
1060	1060	10		Oregon ash	<i>Fraxinus latifolia</i>	Fair	Fair	Multi stem with included bark		retain	2
1061	1061	11		Oregon ash	<i>Fraxinus latifolia</i>	Good	Fair	Subordinated by larger tree		retain	2
1062	1062	17		Oregon ash	<i>Fraxinus latifolia</i>	Good	Good			retain	5
1063	1063	22		Oregon ash	<i>Fraxinus latifolia</i>	Good	Fair	Co-dominant stem		retain	7
1064	1064	18		Oregon ash	<i>Fraxinus latifolia</i>	Good	Fair	Co-dominant stem with included bark		retain	5
1065		21		Oregon ash	<i>Fraxinus latifolia</i>	Good	Good			retain	7
1066	1066	17		Oregon ash	<i>Fraxinus latifolia</i>	Fair	Fair	Large broken limbs		retain	5
1067	1067	14		Oregon ash	<i>Fraxinus latifolia</i>	Fair	Poor	Large decay cavity in lower stem		retain	3
1068	1068	19		Oregon ash	<i>Fraxinus latifolia</i>	Good	Fair	Included bark, heavy lean		retain	6
1069	1069	17		Oregon ash	<i>Fraxinus latifolia</i>	Poor	Poor	Heavy lean, subordinated by larger tree		retain	5
1070	1070	23		Oregon ash	<i>Fraxinus latifolia</i>	Fair	Poor	Co-dominant top, heavy lean		retain	8
1071	1071	23		Oregon ash	<i>Fraxinus latifolia</i>	Fair	Poor	Large cavity at 35 feet		retain	8
1074	1074	43		Douglas-fir	<i>Pseudotsuga menziesii</i>	Good	Good			retain	18
1075	1075	41		Douglas-fir	<i>Pseudotsuga menziesii</i>	Good	Good			retain	17
1076	1076	40		Douglas-fir	<i>Pseudotsuga menziesii</i>	Good	Good	Warning! Wasps at base of tree and in area		retain	16
1077	1077	22		Douglas-fir	<i>Pseudotsuga menziesii</i>	Fair	Fair	Co-dominant stem		retain	7
1078	1078	28		Oregon ash	<i>Fraxinus latifolia</i>	Fair	Poor	Decay at base, co-dominant top		retain	10
1079	1079	40		Oregon ash	<i>Fraxinus latifolia</i>	Fair	Fair	Co-dominant stem with included bark, dead limbs in crown		remove	0
1080	1080	34		Douglas-fir	<i>Pseudotsuga menziesii</i>	Good	Good			remove	0
1081	1081	24		Douglas-fir	<i>Pseudotsuga menziesii</i>	Good	Fair	Dense tree group		remove	0

Attachment 3

Survey Number	Existing Number	DBH ¹	Multi-stem DBH ²	Common Name	Scientific Name	Condition ³	Structure ³	Comments	Not On Property	Treatment	Tree Density Units Retained
1082	1082	15		Douglas-fir	<i>Pseudotsuga menziesii</i>	Fair	Fair	Dense tree group		remove	0
1083	1083	22		Douglas-fir	<i>Pseudotsuga menziesii</i>	Fair	Fair	Dense tree group		remove	0
1084	1084	25		Douglas-fir	<i>Pseudotsuga menziesii</i>	Good	Good			remove	0
1085	1085	42		Douglas-fir	<i>Pseudotsuga menziesii</i>	Fair	Good	Thin crown		remove	0
1086	1086	31		Douglas-fir	<i>Pseudotsuga menziesii</i>	Good	Good			remove	0
1087	1087	40		Douglas-fir	<i>Pseudotsuga menziesii</i>	Good	Fair	Co-dominant top		remove	0
1088	1088	27		Douglas-fir	<i>Pseudotsuga menziesii</i>	Fair	Fair	Thin crown, bend in stem		remove	0
1089	1089	32		Douglas-fir	<i>Pseudotsuga menziesii</i>	Fair	Fair	Dead limbs, thin crown		retain	12
1090	1090	29		Douglas-fir	<i>Pseudotsuga menziesii</i>	Fair	Fair	Epicormic sprouting		retain	11
1091	1091	37		Douglas-fir	<i>Pseudotsuga menziesii</i>	Good	Good			remove	0
1092	1092	28		Douglas-fir	<i>Pseudotsuga menziesii</i>	Fair	Good	Epicormic sprouting		retain	10
1093	1093	28		Oregon ash	<i>Fraxinus latifolia</i>	Fair	Fair	Decay in stem, over extended limbs		retain	10
1094	1094	35		Douglas-fir	<i>Pseudotsuga menziesii</i>	Dead	Dead			remove	0
1095	1095	46		Douglas-fir	<i>Pseudotsuga menziesii</i>	Good	Good			remove	0
1096	1096	39		Douglas-fir	<i>Pseudotsuga menziesii</i>	Fair	Fair	Swelling at base		remove	0
1097	1097	33		Douglas-fir	<i>Pseudotsuga menziesii</i>	Poor	Poor	Co-dominant top, swelling in stem		remove	0
1099	1099	30		Douglas-fir	<i>Pseudotsuga menziesii</i>	Fair	Good	Thin crown		remove	0
1100	1100	27		Douglas-fir	<i>Pseudotsuga menziesii</i>	Good	Good			remove	0
1101	1101	39		Douglas-fir	<i>Pseudotsuga menziesii</i>	Good	Fair	Co-dominant stem at base		remove	0
1102	1102	50		Douglas-fir	<i>Pseudotsuga menziesii</i>	Good	Fair	Decay in stem at 30' on north side		remove	0
1103	1103	30		Douglas-fir	<i>Pseudotsuga menziesii</i>	Fair	Fair	Insect damage on north side at base		remove	0
1104	1104	46		Douglas-fir	<i>Pseudotsuga menziesii</i>	Fair	Poor	Insect damage at base, sloughing bark		remove	0
1105	1105	43		Douglas-fir	<i>Pseudotsuga menziesii</i>	Good	Good			remove	0
1106	1106	39		Douglas-fir	<i>Pseudotsuga menziesii</i>	Good	Good			remove	0
1107	1107	53		Douglas-fir	<i>Pseudotsuga menziesii</i>	Good	Good			remove	0
1108	1108	31		Douglas-fir	<i>Pseudotsuga menziesii</i>	Fair	Fair	Co-dominant top		remove	0
1109	1109	50		Douglas-fir	<i>Pseudotsuga menziesii</i>	Good	Good			retain	21
1110	1110	70		Douglas-fir	<i>Pseudotsuga menziesii</i>	Fair	Fair	Major swelling at base, lean		remove	0
1111	1111	32		Douglas-fir	<i>Pseudotsuga menziesii</i>	Good	Good			remove	0
1112	1112	11		red alder	<i>Alnus rubra</i>	Dead	Dead			remove	0
1113	1113	18		bigleaf maple	<i>Acer macrophyllum</i>	Fair	Poor	Swelling at base, suppressed crown		remove	0
1114	1114	27		Douglas-fir	<i>Pseudotsuga menziesii</i>	Good	Good			remove	0
1115	1115	31		Douglas-fir	<i>Pseudotsuga menziesii</i>	Good	Good			remove	0
1116	1116	27		bigleaf maple	<i>Acer macrophyllum</i>	Fair	Poor	Dead top		remove	0
1117	1117	37		bigleaf maple	<i>Acer macrophyllum</i>	Fair	Poor	Dead top, multiple stems at base		remove	0
1118	1118	13		bigleaf maple	<i>Acer macrophyllum</i>	Good	Poor	Multiple stems at base, heavy lean		remove	0
1119	1119	20		red alder	<i>Alnus rubra</i>	Poor	Poor	Co-dominant stem, ivy covering base, thin crown		remove	0
1120	1120	10		red alder	<i>Alnus rubra</i>	Poor	Poor	Co-dominant stem, ivy covering base		remove	0
1120.1		12		red alder	<i>Alnus rubra</i>	Dead	Dead			remove	0
1121	1121	8		red alder	<i>Alnus rubra</i>	Very Poor	Very Poor	Tree in decline		remove	0
1122	1122	11		red alder	<i>Alnus rubra</i>	Dead	Dead			remove	0
1123	1123	30		red alder	<i>Alnus rubra</i>	Dead	Dead			remove	0
1124	1124	32		red alder	<i>Alnus rubra</i>	Dead	Dead			remove	0
1125	1125	31		Oregon ash	<i>Fraxinus latifolia</i>	Fair	Fair	Over extended limbs, dead limbs in crown		retain	12
1126	1126	23		Oregon ash	<i>Fraxinus latifolia</i>	Fair	Fair	Over extended limbs, dead limbs in crown		retain	8
1127	1127	14		Oregon ash	<i>Fraxinus latifolia</i>	Fair	Poor	Heavy lean, multiple stems at base, dead limbs in crown		retain	3
1128	1128	14		Oregon ash	<i>Fraxinus latifolia</i>	Fair	Fair	Multiple stems at base, over extended limbs, dead branches hanging in crown		retain	3
1129	1129	40		Oregon ash	<i>Fraxinus latifolia</i>	Fair	Poor	Multiple stems with included bark, decay in stem, dead limbs in crown		retain	16
1130	1130	30		Oregon ash	<i>Fraxinus latifolia</i>	Fair	Fair	Co-dominant top, top, dead limbs in crown		retain	11
1131	1131	11		Oregon ash	<i>Fraxinus latifolia</i>	Fair	Poor	Heavy lean, multiple stems with included bark		retain	2
1132	1132	24		Oregon ash	<i>Fraxinus latifolia</i>	Poor	Very Poor	Cavity at base, multiple stems at base		retain	8
1133	1133	12		Oregon ash	<i>Fraxinus latifolia</i>	Fair	Poor	Over extended limbs, multiple stems with included bark		retain	2
1133.1		20		western hemlock	<i>Tsuga heterophylla</i>	Poor	Poor	Tree visually assessed, ivy growing into crown		retain	6
1133.2		16		sweet cherry	<i>Prunus avium</i>	Fair	Poor	Tree visually assessed, blackberry covering base		retain	4
1134	1134	15		Oregon ash	<i>Fraxinus latifolia</i>	Fair	Poor	Multiple stems at base with included bark, over extended limbs		retain	4
1135	1135	18		Oregon ash	<i>Fraxinus latifolia</i>	Fair	Poor	Multiple stems with included bark, dead limbs in crown		retain	5
1136	1136	26		Douglas-fir	<i>Pseudotsuga menziesii</i>	Fair	Good	Dead limbs in crown		remove	0

Attachment 3

Survey Number	Existing Number	DBH ¹	Multi-stem DBH ²	Common Name	Scientific Name	Condition ³	Structure ³	Comments	Not On Property	Treatment	Tree Density Units Retained
1137	1137	29		Douglas-fir	<i>Pseudotsuga menziesii</i>	Good	Good			remove	0
1138	1138	32		Douglas-fir	<i>Pseudotsuga menziesii</i>	Fair	Poor	Damaged roots at base, heavy lean		remove	0
1139	1139	37		Douglas-fir	<i>Pseudotsuga menziesii</i>	Fair	Good	Blackberry covering base		remove	0
1140	1140	42		Douglas-fir	<i>Pseudotsuga menziesii</i>	Good	Fair	Blackberry covering base		remove	0
1141	1141	40		Douglas-fir	<i>Pseudotsuga menziesii</i>	Fair	Fair	Dead limbs in crown		remove	0
1142	1142	39		Douglas-fir	<i>Pseudotsuga menziesii</i>	Good	Good			remove	0
1143	1143	35		Douglas-fir	<i>Pseudotsuga menziesii</i>	Fair	Good	Thin crown		remove	0
1144	1144	34		Douglas-fir	<i>Pseudotsuga menziesii</i>	Fair	Good	Blackberry covering base, thin crown		remove	0
1145	1145	22		Douglas-fir	<i>Pseudotsuga menziesii</i>	Fair	Good	Blackberry covering base		remove	0
1146	1146	29		Douglas-fir	<i>Pseudotsuga menziesii</i>	Fair	Good	Blackberry covering base		remove	0
1147	1147	12		sweet cherry	<i>Prunus avium</i>	Fair	Fair	Blackberry covering base		retain	2
1148	1148	24		western hemlock	<i>Tsuga heterophylla</i>	Poor	Very Poor	Decay at base, blackberry covering base		retain	8
1149	1149	17		bigleaf maple	<i>Acer macrophyllum</i>	Fair	Fair	Co-dominant top		remove	0
1150	1150	31		Oregon ash	<i>Fraxinus latifolia</i>	Fair	Poor	Decay at base, ivy covering base, sap sucker damage at base		remove	0
1151	1151	13		Oregon ash	<i>Fraxinus latifolia</i>	Good	Poor	Co-dominant stem		remove	0
1152	1152	16		Oregon ash	<i>Fraxinus latifolia</i>	Good	Fair	Co-dominant stem		remove	0
1153	1153	14		Oregon ash	<i>Fraxinus latifolia</i>	Good	Good			remove	0
1154	1154	12		Oregon ash	<i>Fraxinus latifolia</i>	Fair	Poor	Heavy lean		remove	0
1155	1155	22		red alder	<i>Alnus rubra</i>	Very Poor	Very Poor	Tree in decline		remove	0
1156	1156	17, 17	24	Oregon ash	<i>Fraxinus latifolia</i>	Poor	Poor	One large dead stem, included bark at base		remove	0
1157	1157	28		Oregon ash	<i>Fraxinus latifolia</i>	Fair	Fair	Co-dominant top		retain	10
1158	1158	34		Oregon ash	<i>Fraxinus latifolia</i>	Fair	Fair	Dead limbs in crown		remove	0
1159	1159	14		Oregon ash	<i>Fraxinus latifolia</i>	Fair	Fair	Ivy covering base		retain	3
1160	1160	8		Oregon ash	<i>Fraxinus latifolia</i>	Fair	Fair	Ivy covering base		retain	2
1161	1161	7		Oregon ash	<i>Fraxinus latifolia</i>	Fair	Fair	Ivy covering base		retain	2
1162	1162	6		Oregon ash	<i>Fraxinus latifolia</i>	Fair	Fair	Ivy covering base		retain	2
1163	1163	7		Oregon ash	<i>Fraxinus latifolia</i>	Fair	Fair	Ivy covering base		retain	2
1164	1164	26		Douglas-fir	<i>Pseudotsuga menziesii</i>	Good	Fair	Ivy covering base		retain	9
1165	1165	29		Douglas-fir	<i>Pseudotsuga menziesii</i>	Good	Fair	Ivy covering base		retain	11
1166	1166	23		Douglas-fir	<i>Pseudotsuga menziesii</i>	Good	Fair	Ivy covering base		retain	8
1167	1167	14		Oregon ash	<i>Fraxinus latifolia</i>	Fair	Fair	Co-dominant stem with included bark		remove	0
1168	1168	15		Oregon ash	<i>Fraxinus latifolia</i>	Poor	Poor	Heavy lean, thin crown		remove	0
1169	1169	12		Oregon ash	<i>Fraxinus latifolia</i>	Fair	Fair	Co-dominant stem with included bark		remove	0
1170	1170	6		Oregon ash	<i>Fraxinus latifolia</i>	Poor	Poor	Thin crown, multiple stems		remove	0
1171	1171	12		Oregon ash	<i>Fraxinus latifolia</i>	Poor	Poor	Tree in decline		remove	0
1172	1172	9		Oregon ash	<i>Fraxinus latifolia</i>	Poor	Poor	Tree in decline		remove	0
1173	1173	13		Oregon ash	<i>Fraxinus latifolia</i>	Poor	Poor	Tree in decline		remove	0
1174	1174	27		Oregon ash	<i>Fraxinus latifolia</i>	Fair	Poor	Large broken limb in crown, co-dominant stem		remove	0
1175	1175	25, 12, 8	29	Oregon ash	<i>Fraxinus latifolia</i>	Fair	Fair	Multiple stems, thin crown		remove	0
1176	1176	9		red alder	<i>Alnus rubra</i>	Poor	Poor	Tree in decline		remove	0
1177	1177	9		red alder	<i>Alnus rubra</i>	Poor	Poor	Tree in decline		remove	0
1178	1178	11		red alder	<i>Alnus rubra</i>	Poor	Poor	Tree in decline		remove	0
1179	1179	28		Douglas-fir	<i>Pseudotsuga menziesii</i>	Fair	Fair	Co-dominant top		remove	0
1180	1180	26		red alder	<i>Alnus rubra</i>	Very Poor	Very Poor	Tree in decline		remove	0
1181	1181	22		red alder	<i>Alnus rubra</i>	Very Poor	Very Poor	Tree in decline		remove	0
1182	1182	30		red alder	<i>Alnus rubra</i>	Dead	Dead			remove	0
1183	1183	26		red alder	<i>Alnus rubra</i>	Very Poor	Very Poor	Tree in decline		remove	0
1184	1184	6		Oregon ash	<i>Fraxinus latifolia</i>	Poor	Poor	Heavy lean, ivy covering base		remove	0
1185	1185	26		red alder	<i>Alnus rubra</i>	Dead	Dead			remove	0
1186	1186	12		red alder	<i>Alnus rubra</i>	Very Poor	Very Poor	Tree in decline		remove	0
1187	1187	7		Oregon ash	<i>Fraxinus latifolia</i>	Fair	Fair	Ivy covering base		retain	2
1188	1188	6		Oregon ash	<i>Fraxinus latifolia</i>	Fair	Fair	Ivy covering base		retain	2
1189	1189	7		Oregon ash	<i>Fraxinus latifolia</i>	Fair	Fair	Do-dominant stem		retain	2
1190	1190	9		Oregon ash	<i>Fraxinus latifolia</i>	Fair	Fair	Co-dominant stem		retain	2
1191	1191	8		Oregon ash	<i>Fraxinus latifolia</i>	Fair	Fair	Ivy covering base		retain	2
1192	1192	8		Oregon ash	<i>Fraxinus latifolia</i>	Fair	Fair	Ivy covering base		retain	2
1193	1193	14		red alder	<i>Alnus rubra</i>	Very Poor	Very Poor	Tree in decline		retain	3

Attachment 3

Survey Number	Existing Number	DBH ¹	Multi-stem DBH ²	Common Name	Scientific Name	Condition ³	Structure ³	Comments	Not On Property	Treatment	Tree Density Units Retained
1194	1194	29, 24	38	Oregon ash	<i>Fraxinus latifolia</i>	Fair	Poor	Large broken limbs in crown		remove	0
1195	1195	15		sweet cherry	<i>Prunus avium</i>	Poor	Poor	Blackberry covering base, co-dominant stem		remove	0
1196	1196	52		Douglas-fir	<i>Pseudotsuga menziesii</i>	Good	Good			remove	0
1197	1197	33, 33	47	Douglas-fir	<i>Pseudotsuga menziesii</i>	Good	Fair	Co-dominant stem with included bark		remove	0
1198	1198	25		Douglas-fir	<i>Pseudotsuga menziesii</i>	Good	Good			remove	0
1198	1198	28		red alder	<i>Alnus rubra</i>	Very Poor	Very Poor	Tree visually assessed, dead top, thin crown		remove	0
1199	1199	35		Douglas-fir	<i>Pseudotsuga menziesii</i>	Good	Good			remove	0
1200	1200	38		Douglas-fir	<i>Pseudotsuga menziesii</i>	Good	Fair	Broken branches in crown		remove	0
1201	1201	32		Oregon ash	<i>Fraxinus latifolia</i>	Fair	Poor	Co-dominant stem, dead limbs in crown		remove	0
1202	1202	32		Douglas-fir	<i>Pseudotsuga menziesii</i>	Fair	Fair	Decay at base, fruiting body on south side		retain	12
1203	1203	33		Douglas-fir	<i>Pseudotsuga menziesii</i>	Very Poor	Very Poor	Decay in stem		remove	0
1204	1204	27		Douglas-fir	<i>Pseudotsuga menziesii</i>	Poor	Fair	Thin crown		remove	0
1205	1205	26		Douglas-fir	<i>Pseudotsuga menziesii</i>	Good	Good			remove	0
1206	1206	27		Douglas-fir	<i>Pseudotsuga menziesii</i>	Fair	Good	Thin crown		remove	0
1207	1207	29		Douglas-fir	<i>Pseudotsuga menziesii</i>	Good	Good			remove	0
1208	1208	35		Douglas-fir	<i>Pseudotsuga menziesii</i>	Good	Good			remove	0
1209	1209	36		Douglas-fir	<i>Pseudotsuga menziesii</i>	Good	Good			remove	0
1210	1210	33		Douglas-fir	<i>Pseudotsuga menziesii</i>	Good	Good			remove	0
1211	1211	31		Douglas-fir	<i>Pseudotsuga menziesii</i>	Good	Good			remove	0
1212	1212	37		Douglas-fir	<i>Pseudotsuga menziesii</i>	Good	Fair	Old torsion crack on stem		remove	0
1213	1213	30		Douglas-fir	<i>Pseudotsuga menziesii</i>	Good	Fair	Swelling in stem at 15'		remove	0
1214	1214	38		Douglas-fir	<i>Pseudotsuga menziesii</i>	Good	Good			remove	0
1215	1215	40		Douglas-fir	<i>Pseudotsuga menziesii</i>	Good	Good			remove	0
1216	1216	42		Douglas-fir	<i>Pseudotsuga menziesii</i>	Good	Good			remove	0
1217	1217	42		Douglas-fir	<i>Pseudotsuga menziesii</i>	Good	Good			remove	0
1218	1218	37		Douglas-fir	<i>Pseudotsuga menziesii</i>	Good	Fair	Blackberry covering base		remove	0
1219	1219	36		Douglas-fir	<i>Pseudotsuga menziesii</i>	Good	Fair	Ivy growing into crown		remove	0
1220	1220	24		Douglas-fir	<i>Pseudotsuga menziesii</i>	Good	Fair	Lean with corrected top		remove	0
1221	1220	22		Douglas-fir	<i>Pseudotsuga menziesii</i>	Fair	Fair	Leaning		remove	0
1222	1221	24		Douglas-fir	<i>Pseudotsuga menziesii</i>	Good	Good			remove	0
1222.1		24		red alder	<i>Alnus rubra</i>	Dead	Dead			remove	0
1223	1222	30		Douglas-fir	<i>Pseudotsuga menziesii</i>	Poor	Poor	Thin crown		remove	0
1224	1224	38		Douglas-fir	<i>Pseudotsuga menziesii</i>	Good	Good			remove	0
1225	1225	34		Douglas-fir	<i>Pseudotsuga menziesii</i>	Good	Good			remove	0
1226	1226	32		Douglas-fir	<i>Pseudotsuga menziesii</i>	Good	Good			remove	0
1227	1227	32		Douglas-fir	<i>Pseudotsuga menziesii</i>	Fair	Good	Thin crown		remove	0
1228	1228	36		Douglas-fir	<i>Pseudotsuga menziesii</i>	Fair	Good	Thin crown		remove	0
1229	1229	32		Douglas-fir	<i>Pseudotsuga menziesii</i>	Good	Good			remove	0
1230	1230	25		Douglas-fir	<i>Pseudotsuga menziesii</i>	Good	Good			remove	0
1231	1231	32		Douglas-fir	<i>Pseudotsuga menziesii</i>	Good	Good			remove	0
1232	1232	27		Douglas-fir	<i>Pseudotsuga menziesii</i>	Good	Good			remove	0
1233	1233	43		Douglas-fir	<i>Pseudotsuga menziesii</i>	Good	Good			remove	0
1234	1234	28		Douglas-fir	<i>Pseudotsuga menziesii</i>	Fair	Good	Thin crown		remove	0
1235	1235	38		Douglas-fir	<i>Pseudotsuga menziesii</i>	Fair	Fair	Swelling in stem, dead limbs in crown		remove	0
1236	1236	39		Douglas-fir	<i>Pseudotsuga menziesii</i>	Good	Good			remove	0
1237	1237	37		Douglas-fir	<i>Pseudotsuga menziesii</i>	Good	Good			remove	0
1238	1238	37		Douglas-fir	<i>Pseudotsuga menziesii</i>	Good	Good			remove	0
1239	1239	34		Douglas-fir	<i>Pseudotsuga menziesii</i>	Good	Fair	Over extended limbs		retain	13
1240	1240	31		Douglas-fir	<i>Pseudotsuga menziesii</i>	Good	Good			remove	0
1241	1241	36		Douglas-fir	<i>Pseudotsuga menziesii</i>	Good	Fair	Damage to cambium on roots		remove	0
1242	1242	24, 9	26	red alder	<i>Alnus rubra</i>	Poor	Poor	Co-dominant stem with included bark, over extended limbs, declining top		remove	0
1242.1		20		red alder	<i>Alnus rubra</i>	Dead	Dead			remove	0
1243	1243	29		Douglas-fir	<i>Pseudotsuga menziesii</i>	Good	Fair	Dead limbs in crown		remove	0
1244	1244	36		Douglas-fir	<i>Pseudotsuga menziesii</i>	Fair	Fair	Dead limbs in crown		remove	0
1245	1245	34		Douglas-fir	<i>Pseudotsuga menziesii</i>	Good	Fair	Dead limbs in crown		remove	0
1246	1246	40		Douglas-fir	<i>Pseudotsuga menziesii</i>	Good	Fair	Broken limbs in crown		remove	0
1247	1247	28		Douglas-fir	<i>Pseudotsuga menziesii</i>	Good	Fair	Dead limbs in crown		remove	0

Attachment 3

Survey Number	Existing Number	DBH ¹	Multi-stem DBH ²	Common Name	Scientific Name	Condition ³	Structure ³	Comments	Not On Property	Treatment	Tree Density Units Retained
1248	1248	40		Douglas-fir	<i>Pseudotsuga menziesii</i>	Good	Fair	Over extended limbs		remove	0
1249	1249	31		Douglas-fir	<i>Pseudotsuga menziesii</i>	Fair	Good	Ivy growing into crown		remove	0
1250	1250	29		Douglas-fir	<i>Pseudotsuga menziesii</i>	Good	Good			remove	0
1251	1251	42		Douglas-fir	<i>Pseudotsuga menziesii</i>	Good	Good			remove	0
1252	1252	39		Douglas-fir	<i>Pseudotsuga menziesii</i>	Good	Poor	Co-dominant stem with included bark		remove	0
1253	1253	35		Douglas-fir	<i>Pseudotsuga menziesii</i>	Good	Good			remove	0
1254	1254	29		Douglas-fir	<i>Pseudotsuga menziesii</i>	Good	Good			remove	0
1255	1255	36		Douglas-fir	<i>Pseudotsuga menziesii</i>	Good	Good			remove	0
1256	1256	29		Douglas-fir	<i>Pseudotsuga menziesii</i>	Good	Good			remove	0
1257	1257	42		Douglas-fir	<i>Pseudotsuga menziesii</i>	Good	Good			remove	0
1259	1259	19		Douglas-fir	<i>Pseudotsuga menziesii</i>	Good	Good			remove	0
1260	1260	30		Douglas-fir	<i>Pseudotsuga menziesii</i>	Fair	Poor	Sloughing bark at base, pistol butt		remove	0
1261	1261	19		Douglas-fir	<i>Pseudotsuga menziesii</i>	Good	Good			remove	0
1262	1262	34		Douglas-fir	<i>Pseudotsuga menziesii</i>	Fair	Fair	Cavity at base, dead limbs in crown		remove	0
1263	1263	13		Douglas-fir	<i>Pseudotsuga menziesii</i>	Very Poor	Very Poor	Top broken out		remove	0
1264	1264	27		Douglas-fir	<i>Pseudotsuga menziesii</i>	Good	Good			remove	0
1265	1265	16		Douglas-fir	<i>Pseudotsuga menziesii</i>	Good	Fair	Contorted stem		remove	0
1266	1266	32		Douglas-fir	<i>Pseudotsuga menziesii</i>	Good	Good			remove	0
1267	1267	18		Douglas-fir	<i>Pseudotsuga menziesii</i>	Fair	Poor	Suppressed tree		remove	0
1268	1268	13		Douglas-fir	<i>Pseudotsuga menziesii</i>	Good	Fair	Co-dominant stem at base		remove	0
1269	1269	19		Douglas-fir	<i>Pseudotsuga menziesii</i>	Good	Fair	Co-dominant stem at base		remove	0
1270	1270	23		Douglas-fir	<i>Pseudotsuga menziesii</i>	Good	Good			remove	0
1271	1271	20		Douglas-fir	<i>Pseudotsuga menziesii</i>	Good	Good			remove	0
1272	1272	35		Douglas-fir	<i>Pseudotsuga menziesii</i>	Fair	Fair	Sap sucker damage at base		remove	0
1273	1273	13		Douglas-fir	<i>Pseudotsuga menziesii</i>	Fair	Fair	Suppressed tree		remove	0
1274	1274	21		Douglas-fir	<i>Pseudotsuga menziesii</i>	Poor	Very Poor	Swelling on stem, decay in stem		remove	0
1275	1275	32		Douglas-fir	<i>Pseudotsuga menziesii</i>	Poor	Fair	Thin crown		remove	0
1276	1276	21		Douglas-fir	<i>Pseudotsuga menziesii</i>	Good	Good			remove	0
1277	1277	33		Douglas-fir	<i>Pseudotsuga menziesii</i>	Good	Good			remove	0
1278	1278	30		Douglas-fir	<i>Pseudotsuga menziesii</i>	Good	Good			remove	0
1283	1283	35		Douglas-fir	<i>Pseudotsuga menziesii</i>	Good	Good			remove	0
1284	1284	29		Douglas-fir	<i>Pseudotsuga menziesii</i>	Good	Good			remove	0
1285	1285	19		Douglas-fir	<i>Pseudotsuga menziesii</i>	Fair	Fair	Bark damage at base		remove	0
1286	1286	18		Douglas-fir	<i>Pseudotsuga menziesii</i>	Good	Good			remove	0
1293	1293	42		Douglas-fir	<i>Pseudotsuga menziesii</i>	Good	Good			remove	0
1294	1294	22		Douglas-fir	<i>Pseudotsuga menziesii</i>	Good	Good			remove	0
1295	1295	30		red alder	<i>Alnus rubra</i>	Dead	Dead			remove	0
1296	1296	40		Douglas-fir	<i>Pseudotsuga menziesii</i>	Good	Good			remove	0
1297	1297	31		Douglas-fir	<i>Pseudotsuga menziesii</i>	Good	Good			remove	0
1298	1298	7		red alder	<i>Alnus rubra</i>	Poor	Poor	Heavy lean, thin crown		remove	0
1299	1299	33		Douglas-fir	<i>Pseudotsuga menziesii</i>	Good	Fair	Dead branches in crown		remove	0
1300	1300	38		Douglas-fir	<i>Pseudotsuga menziesii</i>	Good	Fair	Dead limbs in crown		remove	0
1301	1301	34		Douglas-fir	<i>Pseudotsuga menziesii</i>	Good	Good			remove	0
1302	1302	17		Douglas-fir	<i>Pseudotsuga menziesii</i>	Good	Good			remove	0
1303	1303	6		Douglas-fir	<i>Pseudotsuga menziesii</i>	Poor	Poor	Suppressed tree		remove	0
1304	1304	7		Douglas-fir	<i>Pseudotsuga menziesii</i>	Poor	Poor	Suppressed tree		remove	0
1305	1305	33		Douglas-fir	<i>Pseudotsuga menziesii</i>	Good	Good			remove	0
1306	1306	35		Douglas-fir	<i>Pseudotsuga menziesii</i>	Good	Good			remove	0
1307	1307	15		Douglas-fir	<i>Pseudotsuga menziesii</i>	Poor	Poor	Suppressed tree, heavy lean		remove	0
1308	1308	15, 15	21	Douglas-fir	<i>Pseudotsuga menziesii</i>	Poor	Poor	Co-dominant stem, suppressed tree, heavy lean		remove	0
1309	1309	21		Douglas-fir	<i>Pseudotsuga menziesii</i>	Good	Good			remove	0
1310	1310	21		Douglas-fir	<i>Pseudotsuga menziesii</i>	Good	Good			remove	0
1311	1311	11		Douglas-fir	<i>Pseudotsuga menziesii</i>	Very Poor	Very Poor	Suppressed tree		remove	0
1312	1312	33		Douglas-fir	<i>Pseudotsuga menziesii</i>	Good	Good			remove	0
1313	1313	7		Douglas-fir	<i>Pseudotsuga menziesii</i>	Dead	Dead			remove	0
1314	1314	33		Douglas-fir	<i>Pseudotsuga menziesii</i>	Good	Fair	Small stem attached at base is in decline		remove	0
1315	1315	19		Douglas-fir	<i>Pseudotsuga menziesii</i>	Fair	Good	Thin crown		remove	0

Attachment 3

Survey Number	Existing Number	DBH ¹	Multi-stem DBH ²	Common Name	Scientific Name	Condition ³	Structure ³	Comments	Not On Property	Treatment	Tree Density Units Retained
1316	1316	18		Douglas-fir	<i>Pseudotsuga menziesii</i>	Good	Fair	Contorted top		remove	0
1317	1317	24		Douglas-fir	<i>Pseudotsuga menziesii</i>	Good	Good			remove	0
1318	1318	26		Douglas-fir	<i>Pseudotsuga menziesii</i>	Good	Good			remove	0
1319	1319	9		Douglas-fir	<i>Pseudotsuga menziesii</i>	Fair	Good	Thin crown		remove	0
1320	1320	15		Douglas-fir	<i>Pseudotsuga menziesii</i>	Good	Good			remove	0
1321	1321	11		Douglas-fir	<i>Pseudotsuga menziesii</i>	Fair	Fair	Contorted top		remove	0
1322	1322	20		Douglas-fir	<i>Pseudotsuga menziesii</i>	Good	Fair	Contorted top		remove	0
1323	1323	10		Douglas-fir	<i>Pseudotsuga menziesii</i>	Fair	Good	Thin crown		remove	0
1324	1324	9		Douglas-fir	<i>Pseudotsuga menziesii</i>	Fair	Good	Thin crown		remove	0
1325	1325	21		Douglas-fir	<i>Pseudotsuga menziesii</i>	Good	Good			remove	0
1326	1326	31, 8	32	Douglas-fir	<i>Pseudotsuga menziesii</i>	Good	Fair	Smaller stem attached at base with included bark		remove	0
1327	1327	19		Douglas-fir	<i>Pseudotsuga menziesii</i>	Good	Good			remove	0
1328	1328	13		Douglas-fir	<i>Pseudotsuga menziesii</i>	Good	Good			remove	0
1329	1329	12		Douglas-fir	<i>Pseudotsuga menziesii</i>	Good	Good			remove	0
1330	1330	14		Douglas-fir	<i>Pseudotsuga menziesii</i>	Good	Good			remove	0
1331	1331	15		Douglas-fir	<i>Pseudotsuga menziesii</i>	Good	Good			remove	0
1332	1332	21, 12	24	Douglas-fir	<i>Pseudotsuga menziesii</i>	Fair	Fair	Swelling at base, co-dominant stem with included bark		remove	0
1333	1333	12		Douglas-fir	<i>Pseudotsuga menziesii</i>	Good	Good			remove	0
1334	1334	21		Douglas-fir	<i>Pseudotsuga menziesii</i>	Good	Good			remove	0
1335	1335	21		Douglas-fir	<i>Pseudotsuga menziesii</i>	Good	Good			remove	0
1336	1336	7		Douglas-fir	<i>Pseudotsuga menziesii</i>	Poor	Poor	Thin crown, heavy lean		remove	0
1337	1337	25		Douglas-fir	<i>Pseudotsuga menziesii</i>	Good	Good			remove	0
1338	1338	27		Douglas-fir	<i>Pseudotsuga menziesii</i>	Good	Good			remove	0
1340	1340	23		Douglas-fir	<i>Pseudotsuga menziesii</i>	Good	Good			remove	0
1341	1341	24		Douglas-fir	<i>Pseudotsuga menziesii</i>	Good	Good			remove	0
1342	1342	26		Douglas-fir	<i>Pseudotsuga menziesii</i>	Good	Good			remove	0
1343	1343	24		Douglas-fir	<i>Pseudotsuga menziesii</i>	Good	Good			remove	0
1344	1344	32		Douglas-fir	<i>Pseudotsuga menziesii</i>	Good	Good			remove	0
1345	1345	25		Douglas-fir	<i>Pseudotsuga menziesii</i>	Good	Fair	Pistol butt		remove	0
1346	1346	38		Douglas-fir	<i>Pseudotsuga menziesii</i>	Good	Fair	Broken limbs in crown		remove	0
1347	1347	33		Douglas-fir	<i>Pseudotsuga menziesii</i>	Good	Good			remove	0
1348	1348	40		Douglas-fir	<i>Pseudotsuga menziesii</i>	Good	Fair	Co-dominant top		remove	0
1349	1349	34		Douglas-fir	<i>Pseudotsuga menziesii</i>	Good	Fair	Good limbs in crown		remove	0
1350	1350	18		Douglas-fir	<i>Pseudotsuga menziesii</i>	Fair	Fair	Suppressed tree		remove	0
1351	1351	47		Douglas-fir	<i>Pseudotsuga menziesii</i>	Good	Good			remove	0
1352	1352	33		Douglas-fir	<i>Pseudotsuga menziesii</i>	Good	Good			remove	0
1353	1353	32		Douglas-fir	<i>Pseudotsuga menziesii</i>	Good	Good			remove	0
1354	1354	33		Douglas-fir	<i>Pseudotsuga menziesii</i>	Good	Good			remove	0
1355	1355	27		Douglas-fir	<i>Pseudotsuga menziesii</i>	Good	Good			remove	0
1356	1356	19		Douglas-fir	<i>Pseudotsuga menziesii</i>	Good	Good			remove	0
1357	1357	13		Douglas-fir	<i>Pseudotsuga menziesii</i>	Good	Good			remove	0
1358	1358	27		Douglas-fir	<i>Pseudotsuga menziesii</i>	Good	Good			remove	0
1359	1359	31		Douglas-fir	<i>Pseudotsuga menziesii</i>	Good	Good			remove	0
1360	1360	31		Douglas-fir	<i>Pseudotsuga menziesii</i>	Good	Good			remove	0
1361	1361	17		Douglas-fir	<i>Pseudotsuga menziesii</i>	Fair	Fair	Swelling at base		remove	0
1362	1362	38		Douglas-fir	<i>Pseudotsuga menziesii</i>	Good	Good			remove	0
1363	1363	17		Douglas-fir	<i>Pseudotsuga menziesii</i>	Good	Good			remove	0
1364	1364	23		Douglas-fir	<i>Pseudotsuga menziesii</i>	Good	Fair	Contorted stem		remove	0
1365	1365	13		Douglas-fir	<i>Pseudotsuga menziesii</i>	Good	Good			remove	0
1366	1366	30		Douglas-fir	<i>Pseudotsuga menziesii</i>	Good	Good			remove	0
1367	1367	16		Douglas-fir	<i>Pseudotsuga menziesii</i>	Good	Fair	Blackberry covering base		remove	0
1368	1368	16		Douglas-fir	<i>Pseudotsuga menziesii</i>	Good	Good			remove	0
1369	1369	11		Douglas-fir	<i>Pseudotsuga menziesii</i>	Fair	Fair	Blackberry in canopy		remove	0
1370	1370	23		Douglas-fir	<i>Pseudotsuga menziesii</i>	Good	Good			remove	0
1371	1371	13		Douglas-fir	<i>Pseudotsuga menziesii</i>	Good	Good			remove	0
1372	1372	12		Douglas-fir	<i>Pseudotsuga menziesii</i>	Good	Good			remove	0
1373	1373	14		Douglas-fir	<i>Pseudotsuga menziesii</i>	Good	Good			remove	0

Attachment 3

Survey Number	Existing Number	DBH ¹	Multi-stem DBH ²	Common Name	Scientific Name	Condition ³	Structure ³	Comments	Not On Property	Treatment	Tree Density Units Retained
1374	1374	14		Douglas-fir	<i>Pseudotsuga menziesii</i>	Good	Good			remove	0
1375	1375	12		Douglas-fir	<i>Pseudotsuga menziesii</i>	Good	Good			remove	0
1376	1376	25		Douglas-fir	<i>Pseudotsuga menziesii</i>	Good	Good			remove	0
1377	1377	18		Douglas-fir	<i>Pseudotsuga menziesii</i>	Good	Good			remove	0
1377.1		10		Douglas-fir	<i>Pseudotsuga menziesii</i>	Dead	Dead			remove	0
1377.2		21		red alder	<i>Alnus rubra</i>	Dead	Dead			remove	0
1378	1378	23		Douglas-fir	<i>Pseudotsuga menziesii</i>	Good	Good			remove	0
1379	1379	19		Douglas-fir	<i>Pseudotsuga menziesii</i>	Good	Good			remove	0
1380	1380	17		Douglas-fir	<i>Pseudotsuga menziesii</i>	Good	Fair	Bark damage at base		remove	0
1381	1381	24		Douglas-fir	<i>Pseudotsuga menziesii</i>	Good	Good			remove	0
1382	1382	19		Douglas-fir	<i>Pseudotsuga menziesii</i>	Good	Good			remove	0
1383	1383	24		Douglas-fir	<i>Pseudotsuga menziesii</i>	Good	Fair	Bark damage at base		remove	0
1384	1384	23		Douglas-fir	<i>Pseudotsuga menziesii</i>	Fair	Fair	Red ring rot		remove	0
1385	1385	23		Douglas-fir	<i>Pseudotsuga menziesii</i>	Fair	Fair	Co-dominant stem, other stem previously removed, blackberry covering base		remove	0
1386	1386	15		Douglas-fir	<i>Pseudotsuga menziesii</i>	Good	Good			remove	0
1387	1387	19, 18	26	Douglas-fir	<i>Pseudotsuga menziesii</i>	Good	Fair	Co-dominant stem with included bark at base		remove	0
1390	1390	23		Douglas-fir	<i>Pseudotsuga menziesii</i>	Good	Good			remove	0
1391	1391	26		Douglas-fir	<i>Pseudotsuga menziesii</i>	Good	Good			remove	0
1392	1392	12, 12	17	red alder	<i>Alnus rubra</i>	Very Poor	Very Poor	Co-dominant stem, one dead stem		remove	0
1393	1393	27		Douglas-fir	<i>Pseudotsuga menziesii</i>	Good	Good			remove	0
1394	1394	30		Douglas-fir	<i>Pseudotsuga menziesii</i>	Good	Good			remove	0
1395	1395	26, 13	29	Douglas-fir	<i>Pseudotsuga menziesii</i>	Good	Good			remove	0
1397	1397	27		Douglas-fir	<i>Pseudotsuga menziesii</i>	Good	Good			remove	0
1398	1398	20		Douglas-fir	<i>Pseudotsuga menziesii</i>	Good	Good			remove	0
1399	1399	10		Douglas-fir	<i>Pseudotsuga menziesii</i>	Good	Good			remove	0
1400	1400	29		Douglas-fir	<i>Pseudotsuga menziesii</i>	Good	Good			remove	0
1601	1601	26		Douglas-fir	<i>Pseudotsuga menziesii</i>	Good	Good			remove	0
1602	1602	26, 24	35	red alder	<i>Alnus rubra</i>	Dead	Dead			remove	0
1602.1		28		red alder	<i>Alnus rubra</i>	Dead	Dead			remove	0
1603	1603	23		red alder	<i>Alnus rubra</i>	Very Poor	Poor	Tree in heavy decline		remove	0
1604	1604	33		Douglas-fir	<i>Pseudotsuga menziesii</i>	Fair	Fair	Over extended limbs, blackberry covering base		remove	0
1605	1605	31		Douglas-fir	<i>Pseudotsuga menziesii</i>	Good	Good			remove	0
1606	1606	19		Douglas-fir	<i>Pseudotsuga menziesii</i>	Good	Good			remove	0
1607	1607	34		Douglas-fir	<i>Pseudotsuga menziesii</i>	Good	Good			remove	0
1608	1608	36		Douglas-fir	<i>Pseudotsuga menziesii</i>	Good	Good			remove	0
1609	1609	38		Douglas-fir	<i>Pseudotsuga menziesii</i>	Good	Good			remove	0
1610	1610	30		Douglas-fir	<i>Pseudotsuga menziesii</i>	Good	Fair	Co-dominant top		remove	0
1611	1611	27		Douglas-fir	<i>Pseudotsuga menziesii</i>	Good	Good			remove	0
1612	1612	21		Douglas-fir	<i>Pseudotsuga menziesii</i>	Dead	Dead			remove	0
1613	1613	30		Douglas-fir	<i>Pseudotsuga menziesii</i>	Good	Good			remove	0
1614	1614	28		Douglas-fir	<i>Pseudotsuga menziesii</i>	Good	Fair	Bark damage at base		remove	0
1615	1615	20		Douglas-fir	<i>Pseudotsuga menziesii</i>	Good	Good			remove	0
1616	1616	20		Douglas-fir	<i>Pseudotsuga menziesii</i>	Dead	Dead			remove	0
1617	1617	23		Douglas-fir	<i>Pseudotsuga menziesii</i>	Good	Good			remove	0
1618	1618	20		Douglas-fir	<i>Pseudotsuga menziesii</i>	Good	Fair	Heavy lean		remove	0
1619	1619	31		Douglas-fir	<i>Pseudotsuga menziesii</i>	Good	Good			remove	0
1620	1620	20		Douglas-fir	<i>Pseudotsuga menziesii</i>	Good	Fair	Decay on stem at 15'		remove	0
1621	1621	28		Douglas-fir	<i>Pseudotsuga menziesii</i>	Good	Fair	Decay low on stem at old broken branch		remove	0
1622	1622	13		Douglas-fir	<i>Pseudotsuga menziesii</i>	Good	Good			remove	0
1623	1623	23		Douglas-fir	<i>Pseudotsuga menziesii</i>	Good	Good			remove	0
1624	1624	29		Douglas-fir	<i>Pseudotsuga menziesii</i>	Good	Good			remove	0
1625	1625	31		Douglas-fir	<i>Pseudotsuga menziesii</i>	Good	Fair	Co-dominant top		remove	0
1626	1626	22		Douglas-fir	<i>Pseudotsuga menziesii</i>	Good	Fair	Co-dominant stem with included bark		remove	0
1627	1627	39		Douglas-fir	<i>Pseudotsuga menziesii</i>	Good	Good			remove	0
1628	1628	30, 14	33	Douglas-fir	<i>Pseudotsuga menziesii</i>	Good	Fair	Multiple stems, included bark at base		remove	0
1629	1629	31		Douglas-fir	<i>Pseudotsuga menziesii</i>	Poor	Fair	Co-dominant stem with included bark, dead top		remove	0
1630	1630	12		Douglas-fir	<i>Pseudotsuga menziesii</i>	Good	Good			remove	0

Attachment 3

Survey Number	Existing Number	DBH ¹	Multi-stem DBH ²	Common Name	Scientific Name	Condition ³	Structure ³	Comments	Not On Property	Treatment	Tree Density Units Retained
1631	1631	19		Douglas-fir	<i>Pseudotsuga menziesii</i>	Good	Good			remove	0
1632	1632	18		Douglas-fir	<i>Pseudotsuga menziesii</i>	Good	Good			remove	0
1633	1633	16, 21	26	Douglas-fir	<i>Pseudotsuga menziesii</i>	Good	Fair	Co-dominant stem at base		remove	0
1634	1634	25		Douglas-fir	<i>Pseudotsuga menziesii</i>	Good	Good			remove	0
1635	1635	12		Douglas-fir	<i>Pseudotsuga menziesii</i>	Poor	Poor	Co-dominant top, suppressed tree		remove	0
1636	1636	16		Douglas-fir	<i>Pseudotsuga menziesii</i>	Good	Good			remove	0
1637	1637	21		Douglas-fir	<i>Pseudotsuga menziesii</i>	Good	Good			remove	0
1638	1638	28		Douglas-fir	<i>Pseudotsuga menziesii</i>	Good	Fair	Low broken branch		remove	0
1639	1639	27		Douglas-fir	<i>Pseudotsuga menziesii</i>	Fair	Good	Thin crown		remove	0
1640	1640	23		Douglas-fir	<i>Pseudotsuga menziesii</i>	Good	Good			remove	0
1641	1641	25		Douglas-fir	<i>Pseudotsuga menziesii</i>	Good	Good			remove	0
1642	1642	23		Douglas-fir	<i>Pseudotsuga menziesii</i>	Good	Good			remove	0
1643	1643	29		Douglas-fir	<i>Pseudotsuga menziesii</i>	Good	Good			remove	0
1644	1644	31		Douglas-fir	<i>Pseudotsuga menziesii</i>	Good	Fair	Co-dominant stem with included bark		remove	0
1645	1645	9		sweet cherry	<i>Prunus avium</i>	Good	Good			remove	0
1646	1646	14		Douglas-fir	<i>Pseudotsuga menziesii</i>	Good	Fair	Blackberry covering base		remove	0
1647	1647	12		Douglas-fir	<i>Pseudotsuga menziesii</i>	Good	Good			remove	0
1648	1648	15		Douglas-fir	<i>Pseudotsuga menziesii</i>	Good	Good			remove	0
1649	1649	30		Douglas-fir	<i>Pseudotsuga menziesii</i>	Good	Fair	Co-dominant stem with included bark		remove	0
1650	1650	17		Douglas-fir	<i>Pseudotsuga menziesii</i>	Good	Good			remove	0
1651	1651	32		Douglas-fir	<i>Pseudotsuga menziesii</i>	Good	Good			remove	0
1652	1652	17		Douglas-fir	<i>Pseudotsuga menziesii</i>	Good	Good			remove	0
1653	1653	21		Douglas-fir	<i>Pseudotsuga menziesii</i>	Good	Good			remove	0
1653.1		15, 19	24	Douglas-fir	<i>Pseudotsuga menziesii</i>	Dead	Dead			remove	0
1654	1654	20		Douglas-fir	<i>Pseudotsuga menziesii</i>	Good	Good			remove	0
1655	1655	12		Douglas-fir	<i>Pseudotsuga menziesii</i>	Good	Fair	Contorted top		remove	0
1656	1656	29		Douglas-fir	<i>Pseudotsuga menziesii</i>	Good	Good			remove	0
1657	1657	14		Douglas-fir	<i>Pseudotsuga menziesii</i>	Dead	Dead			remove	0
1658	1658	15		Douglas-fir	<i>Pseudotsuga menziesii</i>	Good	Good			remove	0
1659	1659	10		Douglas-fir	<i>Pseudotsuga menziesii</i>	Dead	Dead			remove	0
1660	1660	12		Douglas-fir	<i>Pseudotsuga menziesii</i>	Good	Good			remove	0
1661	1661	17		Douglas-fir	<i>Pseudotsuga menziesii</i>	Good	Good			remove	0
1662	1662	14		Douglas-fir	<i>Pseudotsuga menziesii</i>	Good	Good			remove	0
1663	1663	27		Douglas-fir	<i>Pseudotsuga menziesii</i>	Good	Fair	Decay in stem at 15'		remove	0
1664	1664	22		Douglas-fir	<i>Pseudotsuga menziesii</i>	Good	Good			remove	0
1665	1665	14		Douglas-fir	<i>Pseudotsuga menziesii</i>	Good	Good			remove	0
1666	1666	25		Douglas-fir	<i>Pseudotsuga menziesii</i>	Good	Good			remove	0
1667	1667	30		Douglas-fir	<i>Pseudotsuga menziesii</i>	Good	Fair	Swelling on stem at base	Not On Property	remove	0
1668	1668	25		Douglas-fir	<i>Pseudotsuga menziesii</i>	Good	Good			remove	0
1669	1669	14		Douglas-fir	<i>Pseudotsuga menziesii</i>	Good	Good			remove	0
1901	1901	34		Douglas-fir	<i>Pseudotsuga menziesii</i>	Good	Fair	Blackberry covering base		remove	0
1910	1910	16		Oregon ash	<i>Fraxinus latifolia</i>	Very Poor	Very Poor	Broken top		retain	4
1911	1911	8		Oregon ash	<i>Fraxinus latifolia</i>	Poor	Very Poor	Dead snag in crown, decay in stem		retain	2
1912	1912	12		Oregon ash	<i>Fraxinus latifolia</i>	Very Poor	Very Poor	Broken top		retain	2
1914	1914	20, 23, 28	41	Douglas-fir	<i>Pseudotsuga menziesii</i>	Good	Fair	Multiple stems with included bark		remove	0
1915	1915	22		Douglas-fir	<i>Pseudotsuga menziesii</i>	Good	Good			remove	0
1916	1916	20		Douglas-fir	<i>Pseudotsuga menziesii</i>	Good	Good			remove	0
1917	1917	14		Douglas-fir	<i>Pseudotsuga menziesii</i>	Very Poor	Very Poor	Dead top, foliage scorch		remove	0
1918	1918	27		Douglas-fir	<i>Pseudotsuga menziesii</i>	Good	Good			remove	0
1919	1919	13		Douglas-fir	<i>Pseudotsuga menziesii</i>	Good	Good			remove	0
1920	1920	25, 11	27	Douglas-fir	<i>Pseudotsuga menziesii</i>	Good	Fair	Multiple stems with included bark at base		remove	0
1921	1921	9		Douglas-fir	<i>Pseudotsuga menziesii</i>	Good	Good			remove	0
1922	1922	19		Douglas-fir	<i>Pseudotsuga menziesii</i>	Good	Good			remove	0
1923	1923	27		Douglas-fir	<i>Pseudotsuga menziesii</i>	Good	Good			remove	0
1924	1924	21		Douglas-fir	<i>Pseudotsuga menziesii</i>	Poor	Poor	Dead top		remove	0
1925	1925	20		Douglas-fir	<i>Pseudotsuga menziesii</i>	Poor	Poor	Red ring rot		remove	0
1926	1926	23		Douglas-fir	<i>Pseudotsuga menziesii</i>	Good	Good			remove	0

Attachment 3

Survey Number	Existing Number	DBH ¹	Multi-stem DBH ²	Common Name	Scientific Name	Condition ³	Structure ³	Comments	Not On Property	Treatment	Tree Density Units Retained
1927	1927	11		Douglas-fir	<i>Pseudotsuga menziesii</i>	Good	Good			remove	0
1928	1928	17		Douglas-fir	<i>Pseudotsuga menziesii</i>	Good	Good			remove	0
1929	1929	21		Douglas-fir	<i>Pseudotsuga menziesii</i>	Dead	Dead			remove	0
1930	1930	14		Douglas-fir	<i>Pseudotsuga menziesii</i>	Dead	Dead			remove	0
1932	1932	20		Douglas-fir	<i>Pseudotsuga menziesii</i>	Good	Fair	Poison oak on stem		remove	0
1933	1933	11		Douglas-fir	<i>Pseudotsuga menziesii</i>	Good	Good			remove	0
1934	1934	16		Douglas-fir	<i>Pseudotsuga menziesii</i>	Fair	Fair	Poison oak on stem, thin crown		remove	0
1935	1935	26		Douglas-fir	<i>Pseudotsuga menziesii</i>	Poor	Poor	Poison oak covering stem, thin crown		remove	0
1936	1936	20		Douglas-fir	<i>Pseudotsuga menziesii</i>	Very Poor	Very Poor	Poison oak covering stem, tree in decline		remove	0
1937	1937	20		Douglas-fir	<i>Pseudotsuga menziesii</i>	Good	Good			remove	0
1938	1938	22		Douglas-fir	<i>Pseudotsuga menziesii</i>	Good	Good			remove	0
1939	1939	13		Douglas-fir	<i>Pseudotsuga menziesii</i>	Good	Good			remove	0
1940	1940	32		Douglas-fir	<i>Pseudotsuga menziesii</i>	Good	Good			remove	0
1941	1941	24		Douglas-fir	<i>Pseudotsuga menziesii</i>	Good	Good			remove	0
1942	1942	39		Douglas-fir	<i>Pseudotsuga menziesii</i>	Fair	Good	Sloughing bark in areas at base		remove	0
1943	1943	16		Douglas-fir	<i>Pseudotsuga menziesii</i>	Good	Good			remove	0
1944	1944	20		Douglas-fir	<i>Pseudotsuga menziesii</i>	Good	Good			remove	0
1945	1945	27		Douglas-fir	<i>Pseudotsuga menziesii</i>	Good	Good			remove	0
1946	1946	12		Douglas-fir	<i>Pseudotsuga menziesii</i>	Good	Good			remove	0
1947	1947	12		Douglas-fir	<i>Pseudotsuga menziesii</i>	Very Poor	Poor	Red ring rot, tree in heavy decline		remove	0
1948	1948	13		Douglas-fir	<i>Pseudotsuga menziesii</i>	Good	Fair	Included bark at base		remove	0
1949	1949	19		Douglas-fir	<i>Pseudotsuga menziesii</i>	Good	Good			remove	0
1950	1950	22		Douglas-fir	<i>Pseudotsuga menziesii</i>	Good	Good			remove	0
1951	1951	30, 31	43	Douglas-fir	<i>Pseudotsuga menziesii</i>	Good	Poor	Co-dominant stem with included bark, heavy lean on west stem		remove	0
1952	1952	25		Douglas-fir	<i>Pseudotsuga menziesii</i>	Good	Good			remove	0
1953	1953	21		Douglas-fir	<i>Pseudotsuga menziesii</i>	Fair	Good	Thin crown		remove	0
1954	1954	27		Douglas-fir	<i>Pseudotsuga menziesii</i>	Good	Good			remove	0
1954.1		22		red alder	<i>Alnus rubra</i>	Dead	Dead	Dead short snag		remove	0
1955	1955	32		Douglas-fir	<i>Pseudotsuga menziesii</i>	Good	Good			remove	0
1956	1956	35		Douglas-fir	<i>Pseudotsuga menziesii</i>	Good	Fair	Co-dominant stem with included bark		remove	0
1957	1957	23		Douglas-fir	<i>Pseudotsuga menziesii</i>	Good	Good			remove	0
1958	1958	24		Douglas-fir	<i>Pseudotsuga menziesii</i>	Good	Good			remove	0
1959	1959	26		Douglas-fir	<i>Pseudotsuga menziesii</i>	Good	Good			remove	0
1960	1960	17		Douglas-fir	<i>Pseudotsuga menziesii</i>	Good	Fair	Blackberry covering base		remove	0
1961	1961	34		Douglas-fir	<i>Pseudotsuga menziesii</i>	Good	Good			remove	0
1962	1962	13		Douglas-fir	<i>Pseudotsuga menziesii</i>	Good	Good			remove	0
1963	1963	25		Douglas-fir	<i>Pseudotsuga menziesii</i>	Good	Good			remove	0
1964	1964	28		Douglas-fir	<i>Pseudotsuga menziesii</i>	Good	Good			remove	0
1965	1965	27		Douglas-fir	<i>Pseudotsuga menziesii</i>	Good	Good			remove	0
1966	1966	30		Douglas-fir	<i>Pseudotsuga menziesii</i>	Good	Good			remove	0
1967	1967	31		Douglas-fir	<i>Pseudotsuga menziesii</i>	Good	Good			remove	0
1968	1968	22		Douglas-fir	<i>Pseudotsuga menziesii</i>	Good	Good			remove	0
1968.1		15		Douglas-fir	<i>Pseudotsuga menziesii</i>	Dead	Dead			remove	0
1969	1969	20		Douglas-fir	<i>Pseudotsuga menziesii</i>	Very Poor	Very Poor	Tree in heavy decline		remove	0
1970	1970	41		Douglas-fir	<i>Pseudotsuga menziesii</i>	Good	Fair	Co-dominant stem with included bark		remove	0
1971	1971	25		Douglas-fir	<i>Pseudotsuga menziesii</i>	Good	Good			remove	0
1972	1972	35		Douglas-fir	<i>Pseudotsuga menziesii</i>	Good	Good			remove	0
1972.1	1913	51		Oregon ash	<i>Fraxinus latifolia</i>	Fair	Fair	Multiple stems with included bark, over-extended limbs		remove	0
1973	1973	34		Douglas-fir	<i>Pseudotsuga menziesii</i>	Good	Good			remove	0
1979	1279	35		Douglas-fir	<i>Pseudotsuga menziesii</i>	Poor	Very Poor	Shear plane crack at base, heavy lean		remove	0
1980	1280	14		Douglas-fir	<i>Pseudotsuga menziesii</i>	Good	Good			remove	0
1981	1281	22		Douglas-fir	<i>Pseudotsuga menziesii</i>	Fair	Poor	Co-dominant stem with included bark		remove	0
1982	1282	22		Douglas-fir	<i>Pseudotsuga menziesii</i>	Good	Good			remove	0
1982	1982	36		Douglas-fir	<i>Pseudotsuga menziesii</i>	Good	Good			remove	0
1983	1983	23		Douglas-fir	<i>Pseudotsuga menziesii</i>	Good	Good			remove	0
1984	1984	27		Douglas-fir	<i>Pseudotsuga menziesii</i>	Good	Good			remove	0
1985	1985	25		Douglas-fir	<i>Pseudotsuga menziesii</i>	Good	Good			remove	0

Attachment 3

Survey Number	Existing Number	DBH ¹	Multi-stem DBH ²	Common Name	Scientific Name	Condition ³	Structure ³	Comments	Not On Property	Treatment	Tree Density Units Retained
1986	1986	17		Douglas-fir	<i>Pseudotsuga menziesii</i>	Good	Good			remove	0
1987	1287	18		Douglas-fir	<i>Pseudotsuga menziesii</i>	Good	Fair	Sap sucker damage at base		remove	0
1987	1987	23		Douglas-fir	<i>Pseudotsuga menziesii</i>	Good	Good			remove	0
1988	1988	17		Douglas-fir	<i>Pseudotsuga menziesii</i>	Good	Fair	Co-dominant stem, other stem previously cut, blackberry covering base		remove	0
1988	1288	25		Douglas-fir	<i>Pseudotsuga menziesii</i>	Good	Good			remove	0
1989	1289	14		Douglas-fir	<i>Pseudotsuga menziesii</i>	Fair	Fair	Thin crown		remove	0
1989	1989	30		Douglas-fir	<i>Pseudotsuga menziesii</i>	Good	Good			remove	0
1990	1290	27		Douglas-fir	<i>Pseudotsuga menziesii</i>	Fair	Poor	Decay on south side at base		remove	0
1990	1990	33		Douglas-fir	<i>Pseudotsuga menziesii</i>	Good	Good			remove	0
1991	1291	22		Douglas-fir	<i>Pseudotsuga menziesii</i>	Good	Good			remove	0
1991	1991	31		Douglas-fir	<i>Pseudotsuga menziesii</i>	Good	Good			remove	0
1992	1992	11		Douglas-fir	<i>Pseudotsuga menziesii</i>	Good	Good			remove	0
1992	1292	24		Douglas-fir	<i>Pseudotsuga menziesii</i>	Good	Good			remove	0
1993	1993	27		Douglas-fir	<i>Pseudotsuga menziesii</i>	Good	Good			remove	0
1994	1994	23		Douglas-fir	<i>Pseudotsuga menziesii</i>	Poor	Poor	Top broken out, co-dominant top		remove	0
1995	1995	39		Douglas-fir	<i>Pseudotsuga menziesii</i>	Good	Good			remove	0
1996	1996	19		Douglas-fir	<i>Pseudotsuga menziesii</i>	Good	Good			remove	0
1997	1997	9		Douglas-fir	<i>Pseudotsuga menziesii</i>	Good	Fair	Decay at old branches at base		remove	0
1998	1998	20		Douglas-fir	<i>Pseudotsuga menziesii</i>	Good	Good			remove	0
1999	1999	30		Douglas-fir	<i>Pseudotsuga menziesii</i>	Good	Good			remove	0
2000	2000	33		Douglas-fir	<i>Pseudotsuga menziesii</i>	Good	Poor	Co-dominant stem with included bark		remove	0
10606	714	19		Engelmann spruce	<i>Picea engelmannii</i>	Good	Fair	Co-dominant stem with included bark		remove	0
10608	713	13, 13, 11	21	Engelmann spruce	<i>Picea engelmannii</i>	Good	Fair	Multiple stems with included bark		remove	0
10609	712	15, 10	18	Engelmann spruce	<i>Picea engelmannii</i>	Fair	Fair	Co-dominant stem with included bark, thin crown		remove	0
11316	1904	40		Douglas-fir	<i>Pseudotsuga menziesii</i>	Good	Fair	Over extended limbs		remove	0
11361	720	16		Douglas-fir	<i>Pseudotsuga menziesii</i>	Good	Good			remove	0
11363	719	35		incense cedar	<i>Calocedrus decurrens</i>	Dead	Dead			remove	0
11999	842	33, 20	39	bigleaf maple	<i>Acer macrophyllum</i>	Poor	Very Poor	Broken tops, over extended limbs		remove	0
12085	1907	40		Douglas-fir	<i>Pseudotsuga menziesii</i>	Good	Good			remove	0
12086	1905	39		Douglas-fir	<i>Pseudotsuga menziesii</i>	Good	Good			retain	16
12087	1906	9		Douglas-fir	<i>Pseudotsuga menziesii</i>	Fair	Poor	Suppressed tree		retain	2
12214	1903	39		Douglas-fir	<i>Pseudotsuga menziesii</i>	Good	Good			retain	16
12215	1902	38		Douglas-fir	<i>Pseudotsuga menziesii</i>	Good	Good			remove	0
12249	722	8, 6, 6, 4, 4	13	English holly	<i>Ilex aquifolium</i>	Good	Poor			remove	0
12252	1909	38		Douglas-fir	<i>Pseudotsuga menziesii</i>	Good	Good			remove	0
12253	1908	42		Douglas-fir	<i>Pseudotsuga menziesii</i>	Good	Good			remove	0
12986	12986	29		Douglas-fir	<i>Pseudotsuga menziesii</i>				Not On Property	remove	0
15601	1980	35		Douglas-fir	<i>Pseudotsuga menziesii</i>	Good	Fair	Over-extended limbs		remove	0
15603	1981	32		Douglas-fir	<i>Pseudotsuga menziesii</i>	Good	Fair	Over-extended limbs, blackberry covering base		remove	0
15606	721	33		incense cedar	<i>Calocedrus decurrens</i>	Dead	Dead			remove	0
15631	1976	51		Douglas-fir	<i>Pseudotsuga menziesii</i>	Poor	Poor	Thin crown, over-extended limbs, dead branches in crown		remove	0
15631.1	1974	33		Douglas-fir	<i>Pseudotsuga menziesii</i>	Good	Good			remove	0
15631.2	1975	37		Douglas-fir	<i>Pseudotsuga menziesii</i>	Good	Good			remove	0
15632	1977	43, 31	53	Douglas-fir	<i>Pseudotsuga menziesii</i>	Very poor	Very poor	Larger stem is dead, other stem is in decline		remove	0
15633	1978	37		Douglas-fir	<i>Pseudotsuga menziesii</i>	Dead	Dead			remove	0
15634	1979	33		Douglas-fir	<i>Pseudotsuga menziesii</i>	Dead	Dead			remove	0
15634.1		46		Douglas-fir	<i>Pseudotsuga menziesii</i>	Good	Fair	Over-extended limbs		remove	0
15634.2		9		sweet cherry	<i>Prunus avium</i>	Poor	Poor	Thin crown, blackberry covering base		remove	0
15988	715	19		Engelmann spruce	<i>Picea engelmannii</i>	Good	Fair	Co-dominant stem with included bark, heavy lean		remove	0
15990	716	13, 16	20	Engelmann spruce	<i>Picea engelmannii</i>	Good	Fair	Co-dominant stem with included bark		remove	0
15991	171	15		Engelmann spruce	<i>Picea engelmannii</i>	Poor	Fair	Over-extended limb, thin crown		remove	0
15992	718	28		Norway spruce	<i>Picea abies</i>	Good	Good			remove	0
										Totals	1068

¹DBH is the trunk diameter in inches, measured at 4.5 feet above the soil line. The DBH measurement is rounded down to the nearest whole number.

²Multi-stem DBH is the DBH for the combined trunks of a tree with multiple stems attached 6 inches above the soil line. The DBH for the tree is found by taking the square root of the sum of all squared stem DBHs rounding to the nearest whole number.

³Condition and Structure ratings: Dead, Very Poor, Poor, Fair, and Good.

Attachment 4 Tree Protection Recommendations

Before Construction Begins

1. Notify all contractors of tree protection procedures. For successful tree protection on a construction site, all contractors must know and understand the goals of tree protection.
 - a. Hold a tree protection meeting with all contractors to explain the goals of tree protection.
 - c. Have all contractors sign memoranda of understanding regarding the goals of tree protection. The memoranda should include a penalty for violating the tree protection plan. The penalty should equal the resulting fines issued by the local jurisdiction plus the appraised value of the tree(s) within the violated tree protection zone per the current Trunk Formula Method as outlined in the current edition of the *Guide for Plant Appraisal* by the Council of Tree & Landscape Appraisers. The penalty should be paid to the owner of the property.
2. Fencing
 - a. Tree protection fencing may be set as shown in Attachment 2.
 - b. The fencing should be put in place before the ground is cleared to protect the trees and the soil around the trees from disturbances.
 - c. Fencing should be established by the project arborist based on the needs of the trees to be protected and to facilitate construction.
 - d. Fencing should consist of 4-foot high steel fencing on concrete blocks or 4-foot metal fencing secured to the ground with 6-foot metal posts to prevent it from being moved by contractors, sagging, or falling down.
 - e. Fencing should remain in the position that is established by the project arborist and not be moved without approval from the project arborist until final project approval.
3. Signage
 - a. All tree protection fencing should have signage as follows so that all contractors understand the purpose of the fencing:

TREE PROTECTION ZONE

**DO NOT REMOVE OR ADJUST THE LOCATION OF THIS
TREE PROTECTION FENCING**
UNAUTHORIZED ENCROACHMENT MAY RESULT IN FINES

Please contact the project arborist if alterations to the location of the tree protection fencing are necessary.

Todd Prager, Project Arborist, Teragan & Associates, 971-295-4835

- b. Signage should be placed every 75-feet or less.

During Construction

1. Protection Guidelines Within the Tree Protection Zones:
 - a. No new buildings; grade change or cut and fill, during or after construction; new impervious surfaces; or utility or drainage field placement should be allowed within the tree protection zones.
 - b. No traffic should be allowed within the tree protection zones. This includes but is not limited to vehicle, heavy equipment, or even repeated foot traffic.
 - c. No storage of materials including but not limiting to soil, construction material, or waste from the site should be permitted within the tree protection zones. Waste includes but is not limited to concrete wash out, gasoline, diesel, paint, cleaner, thinners, etc.
 - d. Construction trailers should not be parked/placed within the tree protection zones.
 - e. No vehicles should be allowed to park within the tree protection zones.
 - f. No other activities should be allowed that will cause soil compaction within the tree protection zones.
2. The trees should be protected from any cutting, skinning or breaking of branches, trunks or woody roots.
3. The project arborist should be notified prior to the cutting of woody roots from trees that are to be retained to evaluate and oversee the proper cutting of roots with sharp cutting tools. Cut roots should be immediately covered with soil or mulch to prevent them from drying out.
4. Trees that have woody roots cut should be provided supplemental water during the summer months.
5. Any necessary passage of utilities through the tree protection zones should be by means of tunneling under woody roots by hand digging or boring with oversight by the project arborist.
6. Any deviation from the recommendations in this section should receive prior approval from the project arborist.

After Construction

1. Carefully landscape the areas within the tree protection zones. Do not allow trenching for irrigation or other utilities within the tree protection zones.
2. Carefully plant new plants within the tree protection zones. Avoid cutting the woody roots of trees that are retained.
3. Do not install permanent irrigation within the tree protection zones unless it is drip irrigation to support a specific planting or the irrigation is approved by the project arborist.
4. Provide adequate drainage within the tree protection zones and do not alter soil hydrology significantly from existing conditions for the trees to be retained.
5. Provide for the ongoing inspection and treatment of insect and disease populations that are capable of damaging the retained trees and plants.
6. The retained trees may need to be fertilized if recommended by the project arborist.
7. Any deviation from the recommendations in this section should receive prior approval from the project arborist.

Attachment 5

Assumptions and Limiting Conditions

1. Any legal description provided to the consultant is assumed to be correct. The information provided by Panattoni Development Company and their consultants was the basis of the information provided in this report.
2. It is assumed that this property is not in violation of any codes, statutes, ordinances, or other governmental regulations.
3. The consultant is not responsible for information gathered from others involved in various activities pertaining to this project. Care has been taken to obtain information from reliable sources.
4. Loss or alteration of any part of this delivered report invalidates the entire report.
5. Drawings and information contained in this report may not be to scale and are intended to be used as display points of reference only.
6. The consultant's role is only to make recommendations. Inaction on the part of those receiving the report is not the responsibility of the consultant.
7. The purpose of this report is to:
 - Provide an assessment of the existing trees;
 - Provide recommendations for tree removal and retention based on the proposed site improvements; and
 - Provide protection recommendations for the trees to be retained.