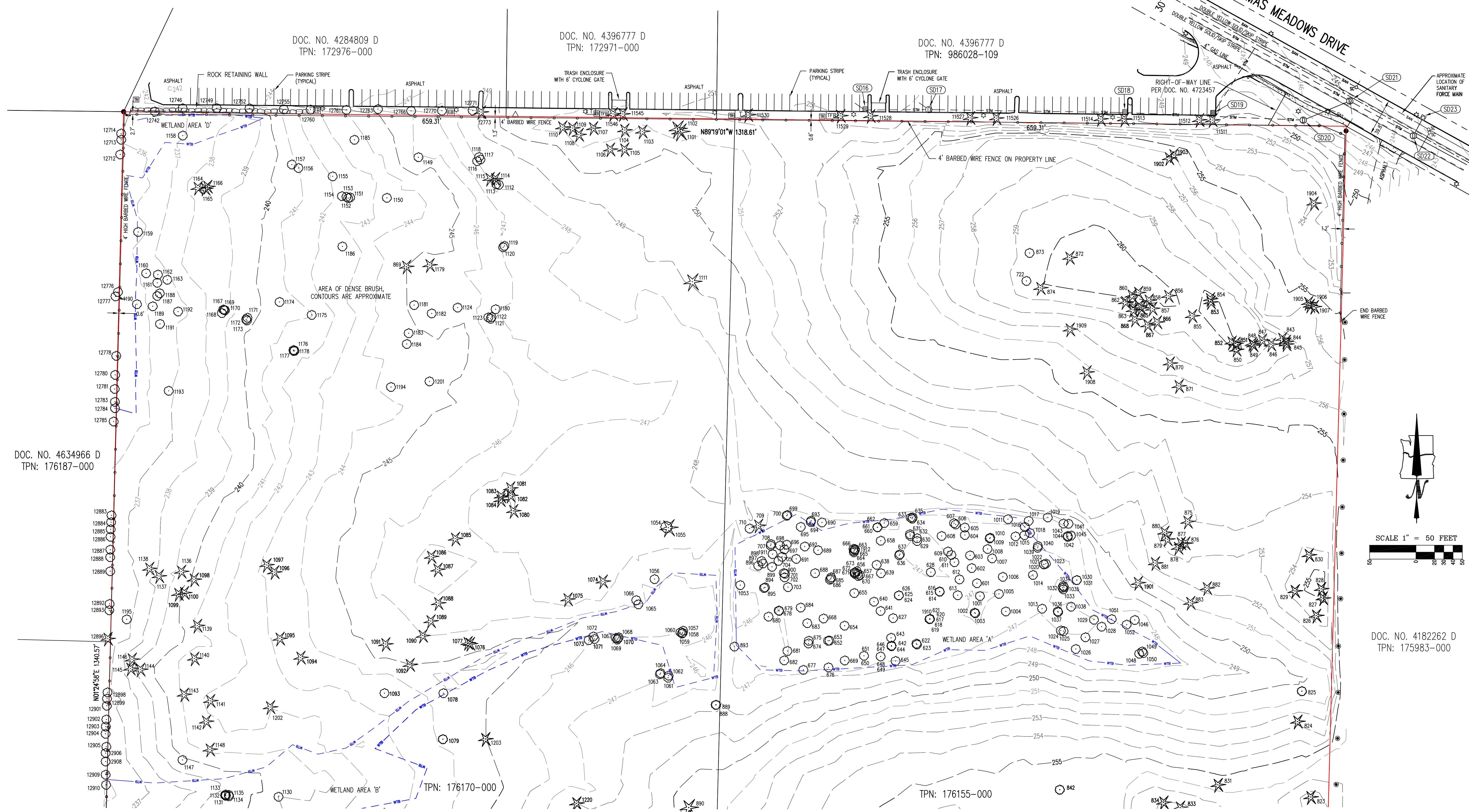
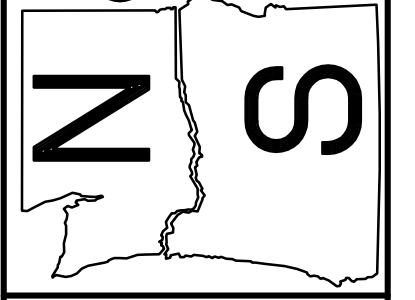


LEGEND			
DECIDUOUS TREE	STORM SEWER CLEAN OUT	TELEPHONE/TELEVISION VAULT	RIGHT-OF-WAY LINE
CONIFEROUS TREE	STORM SEWER CATCH BASIN	TELEPHONE/TELEVISION JUNCTION BOX	BOUNDARY LINE
FIRE HYDRANT	STORM SEWER COMBINATION INLET	TELEPHONE/TELEVISION RISER	PROPERTY LINE
WATER METER	STORM SEWER MANHOLE	TELEPHONE/TELEVISION MANHOLE	CENTERLINE
WATER VALVE	POWER JUNCTION BOX	MAILBOX	CURB
WATER VAULT	POWER TRANSFORMER	1"-1.5" DIAMETER WOOD POLES FOR NETTING	EDGE OF PAVEMENT
SANITARY SEWER CLEAN OUT	GUY WIRE ANCHOR	UTILITY POLE	EASEMENT
SANITARY SEWER MANHOLE	POWER VAULT	STREET LIGHT	FENCE LINE
GAS METER			GRAVEL EDGE
GAS VALVE			

STORM SEWER INFORMATION			
SD16	CATCH BASIN RIM = 250.83' 10" IN (NW) 10" OUT (E) FLOWLINE I.E. = 243.9'	SD18	CATCH BASIN RIM = 249.37' 12" IN (W) 12" OUT (E) FLOWLINE I.E. = 242.3'
SD17	MANHOLE RIM = 250.90' 10" I.E. IN (W) = 243.7' 10" I.E. IN (NW) = 243.4' 12" I.E. OUT (E) = 243.3'	SD19	CATCH BASIN RIM = 248.29' 12" I.E. OUT (NE) = 241.8'
SD20	MANHOLE RIM = 247.83' 12" I.E. IN (W) = 241.4' 12" I.E. OUT (NE) = 241.2'	SD21	MANHOLE RIM = 244.98' 12" IN (NW & SW) 12" OUT (SE) FLOWLINE I.E. = 240.9'
SD22	MANHOLE RIM = 243.53' 10" I.E. IN (NE) = 239.7' 12" IN (NW) 12" OUT (SE) FLOWLINE I.E. = 239.2'	SD23	CURB INLET RIM = 243.46' OUTLET/GRATE = 242.73' 10" I.E. OUT (SW) = 240.2'



ORTHWEST SURVEYING, INC.
 1815 NW 169th PLACE, SUITE 2090
 BEAVERTON, OR 97006
 PH: (503) 848-2127 FAX: (503) 848-2179
 EMAIL: nwsurveying@nwswy.com

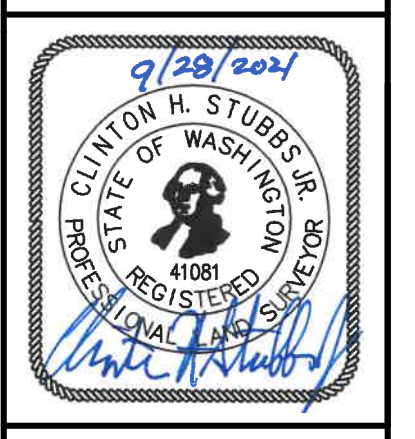


LOCATED IN THE SE 1/4 OF SECTION 29,
 TOWNSHIP 2 NORTH, RANGE 3 EAST, WM.,
 CITY OF CAMAS,
 CLARK COUNTY, WASHINGTON

TOPOGRAPHIC MAP
4707/4723 NW LAKE ROAD
CAMAS, WASHINGTON

DRAWING NO.: 2295 TOPO
 SCALE: AS NOTED
 DRAWING GENERATED BY: LD2004
 DRAWN BY: CDW
 CHECKED BY: CHS
PREPARED FOR:
 PANATION DEVELOPMENT COMPANY, INC.
 1821 DOCK STREET, SUITE 100
 TACOMA, WA 98402

REVISIONS:
 INITIAL RELEASE: SEPT. 28, 2021

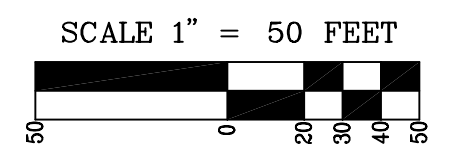
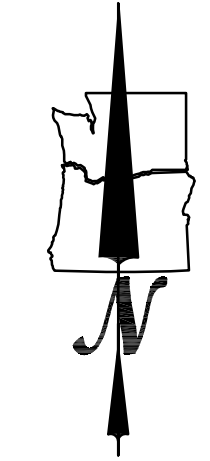
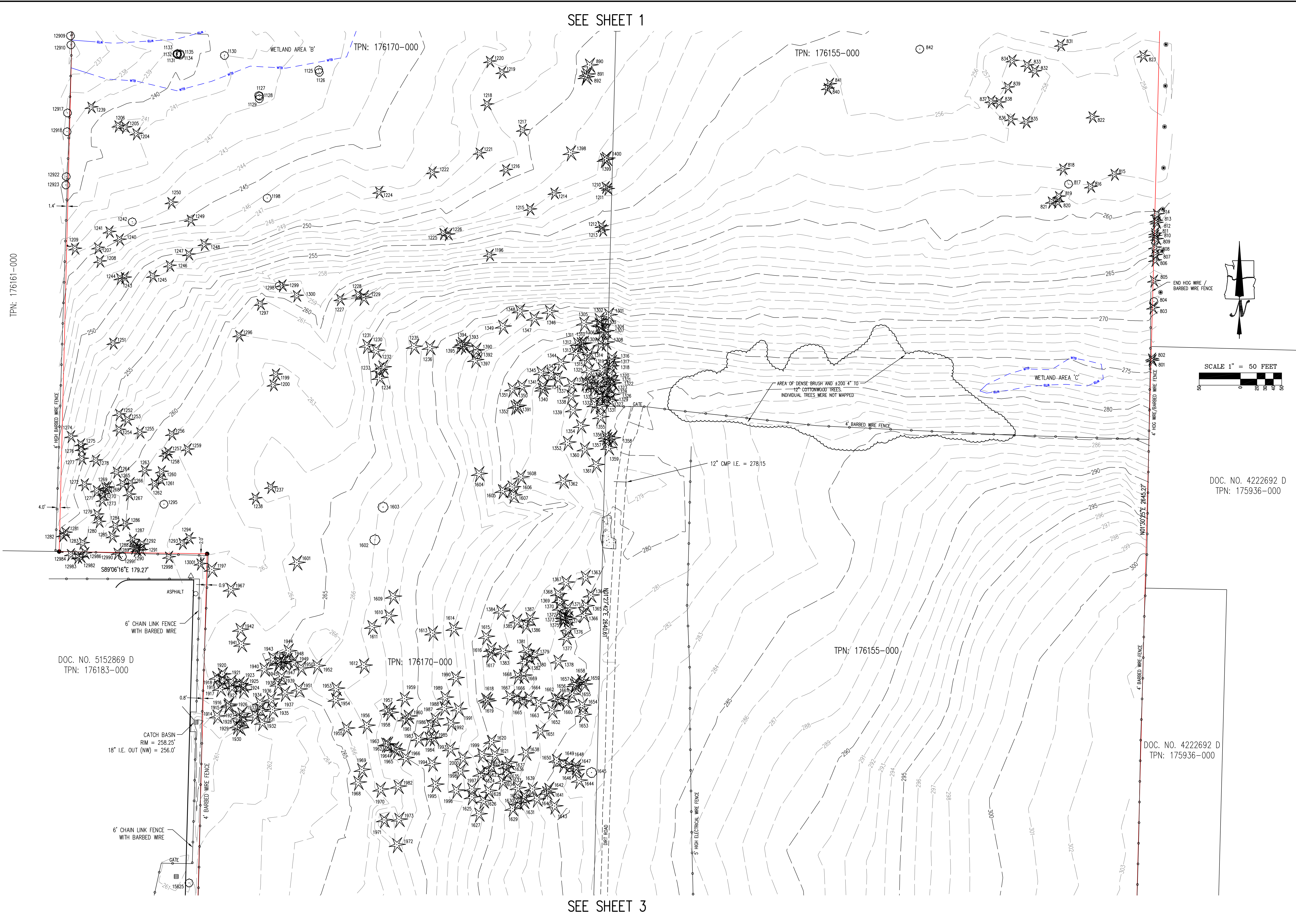


JOB NUMBER
2295
 SHEET
1 OF 5

DOC. NO. 4182262 D
 TPN: 175983-000

SEE SHEET 2

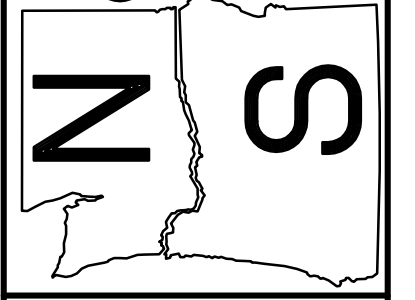
SEE SHEET 1



DOC. NO. 4222692 D
TPN: 175936-000

DOC. NO. 4222692 D
TPN: 175936-000

ORTHWEST SURVEYING, INC.
1815 NW 169th PLACE, SUITE 2090
BEAVERTON, OR 97006
PH: (503) 848-2127 FAX: (503) 848-2179
EMAIL: nwsurveying@nwsry.com



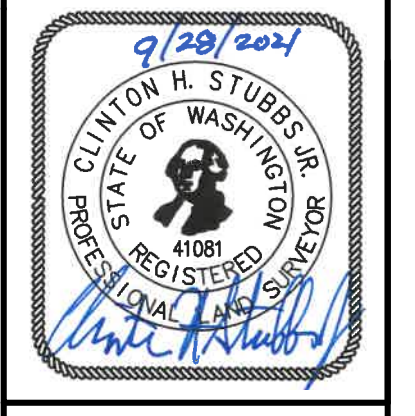
LOCATED IN THE SE 1/4 OF SECTION 29,
TOWNSHIP 2 NORTH, RANGE 3 EAST, WM.,
CITY OF CAMAS,
CLARK COUNTY, WASHINGTON

TOPOGRAPHIC MAP
4707/4723 NW LAKE ROAD
CAMAS, WASHINGTON

DRAWING NO.: 2295 TOPO
SCALE: AS NOTED
DRAWING GENERATED BY: LD2004
DRAWN BY: CDW
CHECKED BY: CHS

PREPARED FOR:
PAMATON DEVELOPMENT COMPANY, INC.
1821 DOCK STREET, SUITE 100
TACOMA, WA 98402

REVISIONS:
INITIAL RELEASE: SEPT. 28 2021



JOB NUMBER
2295

SHEET
2 OF 5

SEE SHEET 3

SEE SHEET 2

DOC. NO. 5695813 D
TPN: 176154-000

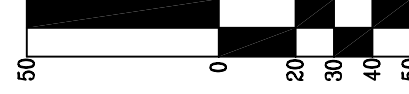
DOC. NO. 5375998 D
TPN: 176168-000

TPN: 176170-000

TPN: 176155-000

DOC. NO. 4222692 D
TPN: 175936-000

SCALE 1" = 50 FEET



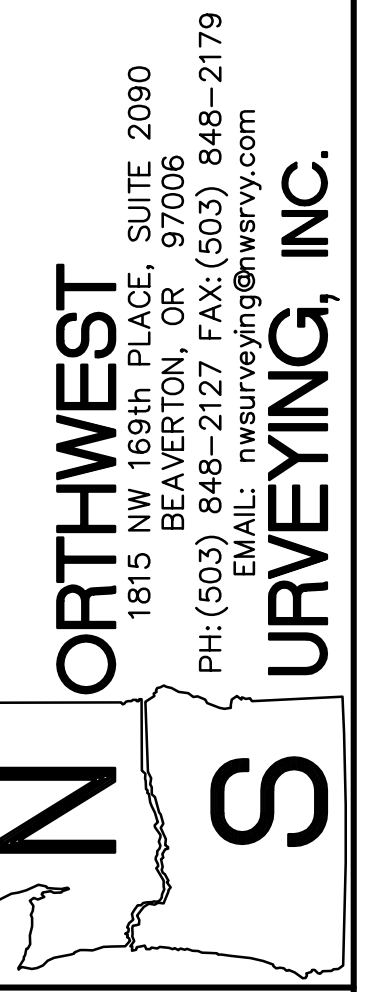
LENGTH=59.87'
RADIUS=6320.00'
DELTA=00°24'44"
CHORD=588°42'26"E 59.87'

N88°54'48"W 120.36'

N88°54'48"W 1137.65'

SEE SHEET 4 FOR DETAIL STREET INFORMATION

SEE SHEET 4 FOR DETAIL STREET INFORMATION



LOCATED IN THE SE 1/4 OF SECTION 29,
TOWNSHIP 2 NORTH, RANGE 3 EAST, W.M.,
CITY OF CAMAS,
CLARK COUNTY, WASHINGTON

TOPOGRAPHIC MAP

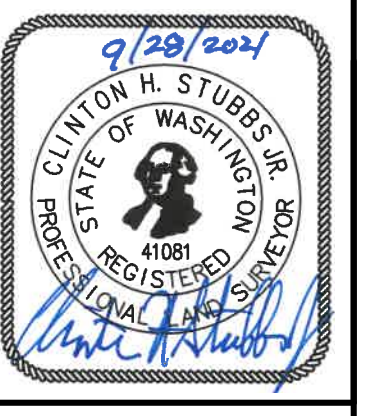
4707/4723 NW LAKE ROAD

CAMAS, WASHINGTON

DRAWING NO.: 2295 TOPO
SCALE: AS NOTED
DRAWING GENERATED BY: LD2004
DRAWN BY: CDW
CHECKED BY: CHS

PREPARED FOR:
PAMATON DEVELOPMENT COMPANY, INC.
1821 DOCK STREET, SUITE 100
TACOMA, WA 98402

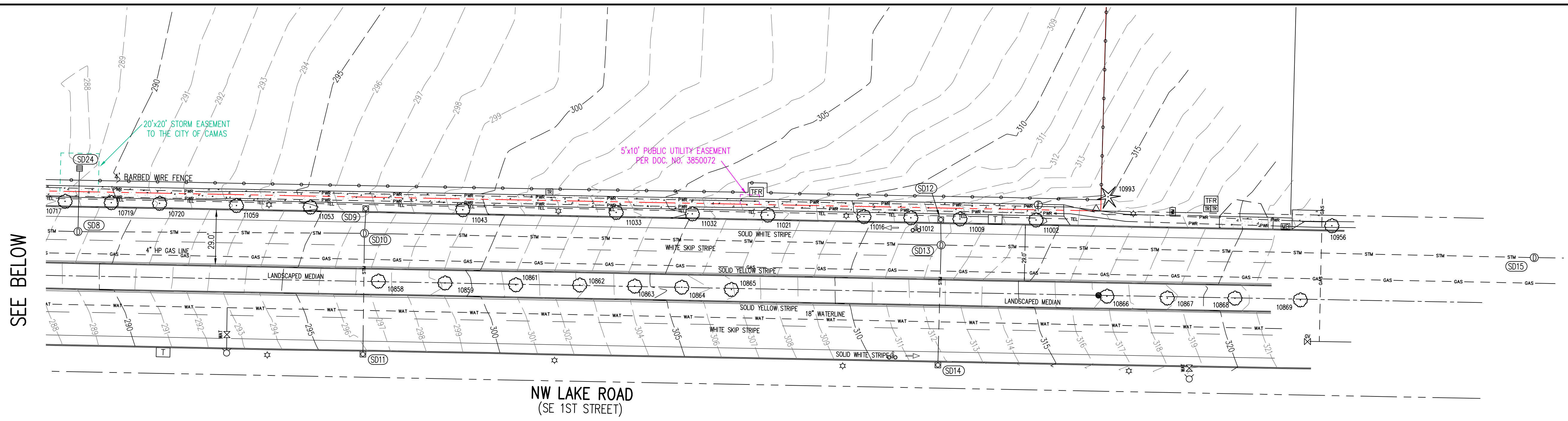
REVISIONS:
INITIAL RELEASE: SEPT. 28, 2021



JOB NUMBER
2295

SHEET
3 OF 5

ORTHWEST
1815 NW 169th PLACE, SUITE 2090
BEAVERTON, OR 97006
PH: (503) 848-2127 FAX: (503) 848-2179
EMAIL: nwsurveying@nwsvy.com
URVEYING, INC.



SEE BELOW

STORM SEWER INFORMATION

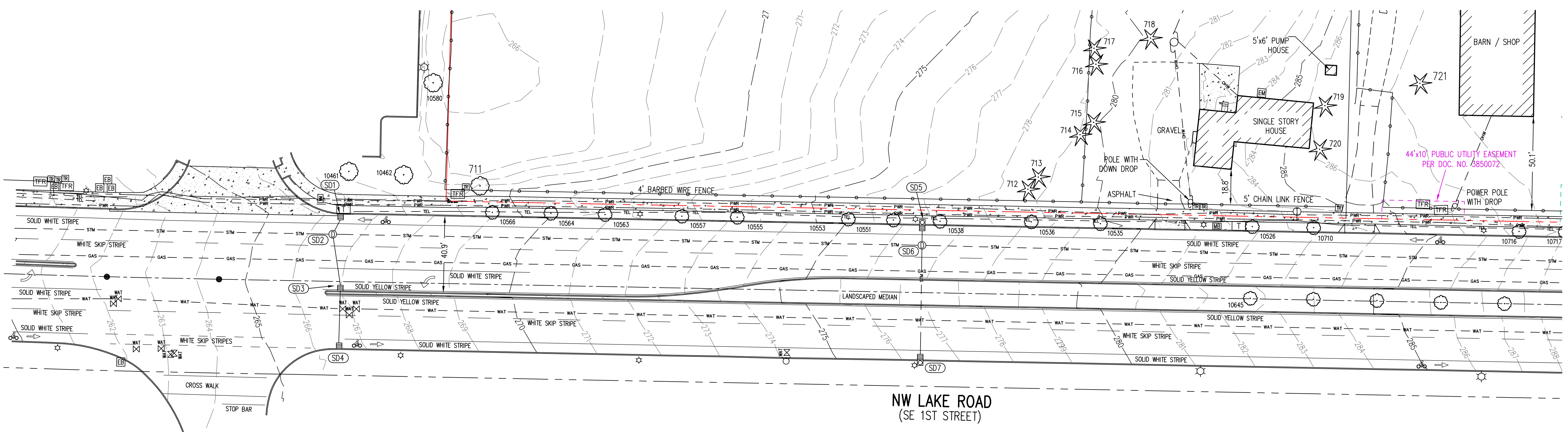
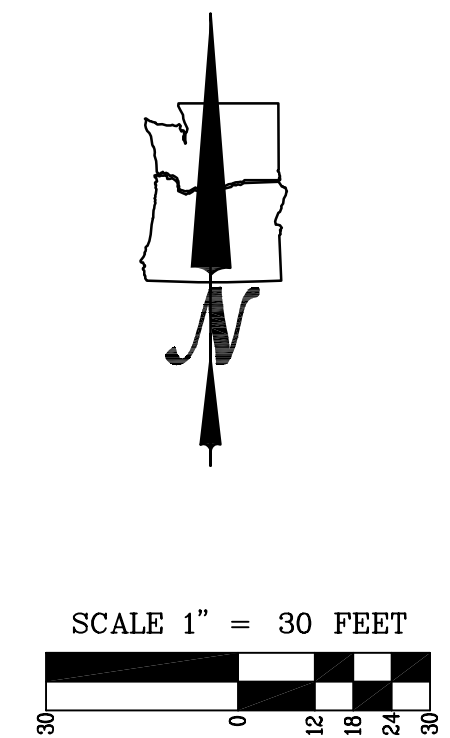
<p>SD1 CATCH BASIN RIM = 266.23' 10" I.E. OUT (SW) = 263.3'</p> <p>SD2 MANHOLE RIM = 266.42' 10" I.E. IN (NE) = 262.0' 10" I.E. IN (S) = 261.7' 24" I.E. IN (E) = 258.7' 24" I.E. OUT (W) = 258.5'</p> <p>SD3 CATCH BASIN RIM = 266.76' 10" IN (S) 10" OUT (N) FLOWLINE I.E. = 262.6'</p> <p>SD4 CATCH BASIN RIM = 266.30' 12" I.E. OUT (N) = 263.4'</p> <p>SD5 CURB INLET / CATCH BASIN RIM = 276.81' GUTTER/GRATE = 276.09' 10" I.E. OUT (S) = 272.4'</p>	<p>SD6 MANHOLE RIM = 276.54' 10" I.E. IN (N) = 271.0' 10" I.E. IN (S) = 271.0' 24" I.E. IN (E) = 269.8' 24" I.E. OUT (W) = 269.6'</p> <p>SD7 CURB INLET / CATCH BASIN RIM = 276.71' GUTTER/GRATE = 275.99' 10" I.E. OUT (N) = 271.2'</p> <p>SD8 MANHOLE RIM = 288.62' 10" I.E. IN (N) = 282.7' 24" IN (E) 24" OUT (W) FLOWLINE I.E. = 279.6'</p> <p>SD9 CURB INLET / CATCH BASIN RIM = 296.68' GUTTER/GRATE = 295.93' 10" I.E. OUT (S) = 292.1'</p>	<p>SD10 MANHOLE RIM = 296.39' 10" I.E. IN (N) = 290.0' 10" I.E. IN (S) = 290.4' 24" IN (E) 24" OUT (W) FLOWLINE I.E. = 286.8'</p> <p>SD11 CURB INLET / CATCH BASIN RIM = 296.73' GUTTER/GRATE = 295.99' 10" I.E. OUT (N) = 292.1'</p> <p>SD12 CURB INLET / CATCH BASIN RIM = 312.29' GUTTER/GRATE = 311.57' 10" I.E. OUT (S) = 309.0'</p> <p>SD13 MANHOLE RIM = 312.16' 10" I.E. IN (N) = 306.5' 10" I.E. IN (S) = 303.9' 24" IN (E) 24" OUT (W) FLOWLINE I.E. = 301.9'</p>	<p>SD14 CURB INLET / CATCH BASIN RIM = 312.29' GUTTER/GRATE = 311.58' 10" I.E. OUT (N) = 308.84'</p> <p>SD15 MANHOLE RIM = 328.12' 24" IN (E) 24" OUT (W) FLOWLINE I.E. = 317.32'</p> <p>SD24 DITCH INLET RIM = ±286.2' 10" I.E. OUT (S) = ±283.5'</p>
--	---	---	--

NOTES

- 1) THE FIELD SURVEY FOR THIS MAP WAS COMPLETED ON SEPTEMBER 15, 2021.
- 2) ELEVATIONS AND CONTOURS ARE BASED ON CLARK COUNTY BENCHMARK ID NUMBER 265. THE BENCHMARK IS THE SOUTHEAST CORNER OF SECTION 29, BEING A BRASS DISK IN CONCRETE WITHIN A MONUMENT CASE. THE BENCHMARK IS LOCATED IN THE CENTERLINE OF NW LAKE ROAD NEAR THE SOUTHEAST CORNER OF THE SURVEYED PROPERTY. IT HAS AN ELEVATION OF 316.85 FEET BASED ON THE NGVD 1929(47) VERTICAL DATUM.
- 3) THE WETLAND DELINEATION MARKERS WERE PROVIDED BY SOUNDVIEW CONSULTANTS LLC. FIELD TIES OF THE MARKERS WERE OBTAINED TO REPRESENT THE WETLAND BOUNDARIES OF THE SURVEYED PROPERTY.
- 4) THE BASIS OF BEARINGS FOR THIS SURVEY IS BOOK 58, PAGE 46, CLARK COUNTY SURVEY RECORDS.
- 5) THE RIGHT-OF-WAY WIDTHS WERE ESTABLISHED USING INFORMATION FROM RECORD SURVEYS AND THE TAX ASSESSOR'S MAP.
- 6) THE EASEMENTS SHOWN ON THIS MAP ARE BASED ON THE TITLE REPORT, PREPARED BY FIRST AMERICAN TITLE INSURANCE COMPANY WITH FILE NUMBER NCS-1040430-WAI AND WITH AN EFFECTIVE DATE OF NOVEMBER 18, 2020 AT 7:30 AM.
- 7) THE UNDERGROUND UTILITIES ARE BASED ON THE MARKINGS PER LOCATE TICKET NUMBERS 212004127 AND 21204165.

UTILITY STATEMENT

THE UNDERGROUND UTILITIES SHOWN HAVE BEEN LOCATED FROM FIELD SURVEY INFORMATION AND EXISTING DRAWINGS. THE SURVEYOR MAKES NO GUARANTEE THAT THE UNDERGROUND UTILITIES SHOWN COMPRISE ALL SUCH UTILITIES IN THE AREA, EITHER IN SERVICE OR ABANDONED. THE SURVEYOR FURTHER DOES NOT WARRANT THAT THE UNDERGROUND UTILITIES SHOWN ARE IN THE EXACT LOCATION INDICATED ALTHOUGH HE DOES CERTIFY THAT THEY ARE LOCATED AS ACCURATELY AS POSSIBLE FROM INFORMATION AVAILABLE. THE SURVEYOR HAS NOT PHYSICALLY LOCATED THE UNDERGROUND UTILITIES.



SEE ABOVE

NW LAKE ROAD
 (SE 1ST STREET)

TREE INFORMATION

TAG NO	DESCRIPTION	TAG NO	DESCRIPTION	TAG NO	DESCRIPTION	TAG NO	DESCRIPTION	TAG NO	DESCRIPTION	TAG NO	DESCRIPTION	TAG NO	DESCRIPTION	TAG NO	DESCRIPTION	TAG NO	DESCRIPTION
601	14" ASH	715	22" FIR	1006	13" ASH	1118	13" MAPLE	1231	32" FIR	1342	26" FIR	1656	29" FIR	10461	6" MAPLE		
602	7" ASH	716	SPLIT 13", 15" FIR	1007	6" ASH	1119	SPLIT (2) 7" ALDER	1232	27" FIR	1343	24" FIR	1657	14" FIR	10462	6" MAPLE		
603	9" ASH	717	16" FIR	1008	13" ASH	1120	12" ALDER	1233	43" FIR	1344	32" FIR	1658	15" FIR	10526	11" MAPLE		
604	10" ASH	718	32" CEDAR	1009	17" ASH	1121	8" ALDER	1234	26" FIR	1345	25" FIR	1659	10" FIR	10535	4" MAPLE		
605	9" ASH	719	35" CEDAR	1010	11" ASH	1122	11" ALDER	1235	37" FIR	1346	37" FIR	1660	12" FIR	10536	5" MAPLE		
606	6" ASH	720	14" FIR	1011	SPLIT 6", 22" ASH	1123	SPLIT 9", 12" ALDER	1236	39" FIR	1347	32" FIR	1661	14" FIR	10537	11" MAPLE		
607	10" ASH	721	43" CEDAR	1012	12" ASH	1124	SPLIT 6", 9", (2) 10" ALDER	1237	37" FIR	1348	40" FIR	1662	15" FIR	10551	11" MAPLE		
608	18" ASH	722	SPLIT (2) 6", 7" HOLLY	1013	13" ASH	1125	33" ASH	1238	37" FIR	1349	34" FIR	1663	27" FIR	10553	10" MAPLE		
609	13" ASH	801	24" FIR	1014	18" ASH	1126	21" ASH	1239	36" FIR	1350	17" FIR	1664	22" FIR	10555	8" MAPLE		
610	12" ASH	802	20" FIR	1015	10" ASH	1127	15" ASH	1240	31" FIR	1351	47" FIR	1665	14" FIR	10557	10" MAPLE		
611	13" ASH	803	28" FIR	1016	6" ASH	1128	15" ASH	1240	31" FIR	1352	35" FIR	1666	26" FIR	10563	8" MAPLE		
612	17" ASH	804	12" ALDER	1017	17" ASH	1129	50" ASH	1241	39" FIR	1353	30" FIR	1667	21" FIR	10564	10" MAPLE		
613	19" ASH	805	27" FIR	1018	8" ASH	1130	30" ASH	1242	27" ALDER	1354	35" FIR	1668	25" FIR	10566	8" MAPLE		
614	12" ASH	806	18" FIR	1019	15" ASH	1131	9" ASH	1243	28" FIR	1355	25" FIR	1669	15" FIR	10590	5" OAK		
615	9" ASH	807	18" FIR	1020	9" ASH	1132	25" ASH	1244	44" FIR	1356	18" FIR	1901	38" FIR	10645	10" MAPLE		
616	9" ASH	808	21" FIR	1021	6" ASH	1133	13" ASH	1245	36" FIR	1365	11" FIR	1902	37" FIR	10710	11" MAPLE		
617	11" ASH	809	15" FIR	1022	8" ASH	1134	15" ASH	1246	39" FIR	1358	26" FIR	1903	37" FIR	10716	11" MAPLE		
618	14" ASH	810	13" FIR	1023	10" ASH	1135	17" ASH	1247	28" FIR	1359	31" FIR	1904	45" FIR	10717	10" MAPLE		
619	14" ASH	811	7" FIR	1024	30" ASH	1136	23" FIR	1248	39" FIR	1360	30" FIR	1905	40" FIR	10719	10" MAPLE		
620	15" ASH	812	12" FIR	1025	11" ASH	1137	24" FIR	1249	34" FIR	1361	16" FIR	1906	9" FIR	10720	10" MAPLE		
621	16" ASH	813	13" FIR	1026	21" ASH	1138	23" FIR	1250	31" FIR	1362	38" FIR	1907	40" FIR	10858	10" DECIDUOUS		
622	14" ASH	814	23" FIR	1027	22" ASH	1139	30" FIR	1251	42" FIR	1363	16" FIR	1908	41" FIR	10859	11" DECIDUOUS		
623	16" ASH	815	32" FIR	1028	13" ASH	1140	37" FIR	1252	39" FIR	1364	21" FIR	1909	34" FIR	10861	10" DECIDUOUS		
624	11" ASH	816	14" FIR	1029	20" ASH	1141	34" FIR	1253	35" FIR	1365	11" FIR	1910	15" ASH	10862	10" DECIDUOUS		
625	8" ASH	817	15" OAK	1030	9" HAWTHORN	1142	33" FIR	1254	30" FIR	1366	29" FIR	1911	8" ASH	10863	10" DECIDUOUS		
626	12" ASH	818	29" FIR	1031	6" HAWTHORN	1143	31" FIR	1255	36" FIR	1367	16" FIR	1912	11" ASH	10864	9" DECIDUOUS		
627	12" ASH	819	32" FIR	1032	11" ASH	1144	35" FIR	1256	29" FIR	1368	17" FIR	1914	SPLIT 19", 21", 26" FIR	10865	8" DECIDUOUS		
628	18" ASH	820	24" FIR	1033	9" ASH	1145	20" FIR	1257	43" FIR	1369	11" FIR	1915	22" FIR	10866	8" DECIDUOUS		
629	10" ASH	821	23" FIR	1034	13" ASH	1146	25" FIR	1258	19" FIR	1370	22" FIR	1916	20" FIR	10867	8" DECIDUOUS		
630	12" ASH	822	41" FIR	1035	17" ASH	1147	11" CHERRY	1259	38" FIR	1371	14" FIR	1917	13" FIR	10868	8" DECIDUOUS		
631	8" ASH	823	SPLIT 35", 36" FIR	1036	18" ASH	1148	22" HEMLOCK	1260	31" FIR	1372	12" FIR	1918	27" FIR	10869	8" DECIDUOUS		
632	9" ASH	824	40" FIR	1037	12" ASH	1149	15" MAPLE	1261	19" FIR	1373	14" FIR	1919	11" FIR	10956	8" MAPLE		
633	18" ASH	825	26" WALNUT	1038	11" ASH	1150	30" ASH	1262	34" FIR	1374	14" FIR	1920	SPLIT 10", 26" FIR	10993	27" CEDAR		
634	18" ASH	826	27" FIR	1039	7" ASH	1151	12" ASH	1263	14" FIR	1375	12" FIR	1921	9" FIR	11002	9" MAPLE		
635	17" ASH	827	33" FIR	1040	12" ASH	1152	15" ASH	1264	28" FIR	1376	25" FIR	1922	18" FIR	11009	8" MAPLE		
636	13" ASH	828	SPLIT 18", 33" FIR	1041	17" ASH	1153	14" ASH	1265	17" FIR	1377	19" FIR	1923	24" FIR	11012	7" MAPLE		
637	12" ASH	829	40" FIR	1042	24" ASH	1154	6" ASH	1266	32" FIR	1378	22" FIR	1924	19" FIR	11016	7" MAPLE		
638	12" ASH	830	42" FIR	1043	17" ASH	1155	24" ALDER	1267	18" FIR	1379	19" FIR	1925	19" FIR	11021	8" MAPLE		
639	19" ASH	831	48" FIR	1044	8" ASH	1156	SPLIT (2) 6", 14" ASH	1268	13" FIR	1380	17" FIR	1926	20" FIR	11032	8" MAPLE		
640	9" ASH	832	40" FIR	1045	21" ASH	1157	24" ASH	1269	19" FIR	1381	5" FIR	1927	10" FIR	11033	8" MAPLE		
641	15" ASH	833	30" FIR	1046	15" ASH	1158	31" ASH	1270	23" FIR	1382	19" FIR	1928	16" FIR	11043	9" MAPLE		
642	10" ASH	834	27" ASH	1047	13" ASH	1159	13" ASH	1271	21" FIR	1383	21" FIR	1929	19" FIR	11053	9" MAPLE		
643	18" ASH	835	28" FIR	1048	8" ASH	1160	7" ASH	1272	35" FIR	1384	23" FIR	1930	13" FIR	11059	9" MAPLE		
644	13" ASH	836	28" FIR	1050	9" ASH	1161	7" ASH	1273	13" FIR	1385	21" FIR	1931	21" FIR	11511	6" CEDAR		
645	23" ASH	837	23" FIR	1051	16" ASH	1162	6" ASH	1275	32" FIR	1386	16" FIR	1932	19" FIR	11512	3" CEDAR		
646	7" ASH	838	31" FIR	1052	29" ASH	1163	6" ASH	1276	20" FIR	1387	SPLIT 17", 19" FIR	1933	12" FIR	11513	3" CEDAR		
647	7" ASH	839	31" FIR	1053	20" ASH	1164	22" FIR	1277	34" FIR	1390	21" FIR	1934	16" FIR	11514	3" CEDAR		
648	22" ASH	840	25" FIR	1054	17" ALDER	1165	25" FIR	1278	30" FIR	1391	26" FIR	1935	25" FIR	11526	3" CEDAR		
649	6" ASH	841	27" FIR	1055	26" FIR	1166	19" FIR	1279	34" FIR	1392	SPLIT 11", 12" ALDER	1936	20" FIR	11527	3" CEDAR		
650	6" ASH	842	SPLIT 16", 44" MAPLE	1056	24" ASH	1167	14" ASH	1280	14" FIR	1393	26" FIR	1937	20" FIR	11528	3" CEDAR		
651	7" ASH	843	30" FIR	1057	23" ASH	1168	17" ASH	1281	14" FIR	1394	25" FIR	1938	20" FIR	11529	5" CEDAR		
652	8" ASH	844	19" FIR	1058	16" ASH	1169	12" ASH	1282	22" FIR	1395	SPLIT 13", 28" FIR	1939	13" FIR	11530	5" CEDAR		
653	15" ASH	845	28" FIR	1059	6" ASH	1170	6" ASH	1283	34" FIR	1397	25" FIR	1940	32" FIR	11545	4" CEDAR		
654	14" ASH	846	28" FIR	1060	13" ASH	1171	12" ASH	1284	30" FIR	1398	17" FIR	1941	22" FIR	11546	35" CEDAR		
655	22" ASH	847	36" FIR	1061	13" ASH	1172	10" ASH	1285	18" FIR	1399	9" FIR	1942	39" FIR	12712	SPLIT (2) 8" POPLAR		
656	9" ASH	848	33" FIR	1062	16" ASH	1173	11" ASH	1286	19" FIR	1400	23" FIR	1943	17" FIR	12713	SPLIT 6", 12" POPLAR		
657	SPLIT 8", 9" ASH	849	25" FIR	1063	19" ASH	1174	31" ASH	1287	19" FIR	1601	27" FIR	1944	20" FIR	12714	12" POPLAR		
658	13" ASH	850	31" FIR	1064	17" ASH	1175	SPLIT 11", 25" ASH	1288	24" FIR	1602	SPLIT 19", 22" ALDER	1945	25" FIR	12742	4" ALDER		
659	17" ASH	851	36" FIR	1065	23" ASH	1176	9" ALDER	1289	14" FIR	1603	SPLIT 8", 10" 13" ALDER	1946	11" FIR	12746	SPLIT 6", 8", 10" DECIDUOUS		
660	6" ASH	852	31" ASH	1066	17" ASH	1177	9" ALDER	1290	27" FIR	1604	34" FIR	1947	12" FIR	12749	8" DECIDUOUS		
661	10" ASH	853	29" FIR	1067	14" ASH	1178	9" ALDER	1291	23" FIR	1605	31" FIR	1948	13" FIR	12752	8" DECIDUOUS		
662	11" ASH	854	34" FIR	1068	19" ASH	1179	28" FIR	1292	25" FIR	1606	19" FIR	1949	SPLIT 19", 22" FIR	12755	6" DECIDUOUS		
663	11" ASH	855	36" FIR	1069	18" ASH	1180	SPLIT (3) 8" ALDER	1293	42" FIR	1607	34" FIR	1950	21" FIR	12760	9" DECIDUOUS		
664	12" ASH	856	37" FIR	1070	23" ASH	1181	SPLIT 11", 14" ALDER	1294	22" FIR	1608	36" FIR	1951	SPLIT 29", 32" FIR	12761	8" DECIDUOUS		
665	9" ASH	857	37" FIR	1071	24" ASH	1182	SPLIT 10", 20" ALDER	1295	9" ALDER	1609	38" FIR	1952	27" FIR	12763	8" DECIDUOUS		
666	11" ASH	858	25" FIR	1072	6" ASH	1183	21" ALDER	1296	39" FIR	1610	30" FIR	1953	19" FIR	12766	9" DECIDUOUS		
667	10" ASH	859	27" FIR	1073	23" ASH	1184	9" ASH	1297	31" FIR	1611	27" FIR	1954	28" FIR	12770	8" DECIDUOUS		
668	18" ASH	860	42" FIR	1074	42" FIR	1185	SPLIT 6", 7" ALDER	1298	8" ALDER	1612	29" FIR	1955	32" FIR	12771	4" CEDAR		
669	SPLIT 12", 16" ASH	861	42" FIR	1075	39" FIR	1186	8" ALDER	1299	33" FIR	1613	24" FIR	1956	34" FIR	12773	3" CEDAR		
670	9" ASH	862	25" FIR	1076	40" FIR	1187	7" ASH	1300	27" FIR	1614	28" FIR	1957	SPLIT 5", 25" FIR	12776	SPLIT (2) 8" POPLAR		
671	9" ASH	864	9" FIR	1077	23" FIR	1188	6" ASH	1301	33" FIR	1615	20" FIR	1958	24" FIR	12777	SPLIT 6", 13" POPLAR		
672	7" ASH	865	23" FIR	1078	26" ASH	1189	6" ASH	1302	16" FIR	1616	21" FIR	1959	27" FIR	12778	SPLIT 6", 13" POPLAR		
673	14" ASH	866	34" FIR	1079	36" ASH	1190	6" ASH	1303	6" FIR	1617	22" FIR	1960	19" FIR	12780	SPLIT (2) 8" POPLAR		
674	14" ASH	867	33" FIR	1080	32" FIR	1191	8" ASH	1304	7" FIR	1618	20" FIR	1961	35" FIR	12781	SPLIT 12", 14" POPLAR		
675	11" ASH	868	29" FIR	1081	24" FIR	1192	8" ASH	1305	32" FIR	1619	31" FIR	1962	12" FIR	12783	17" POPLAR		
676</																	