

(TARGET = 1,800 SQ. FT.)

2,117 SQ.FT.

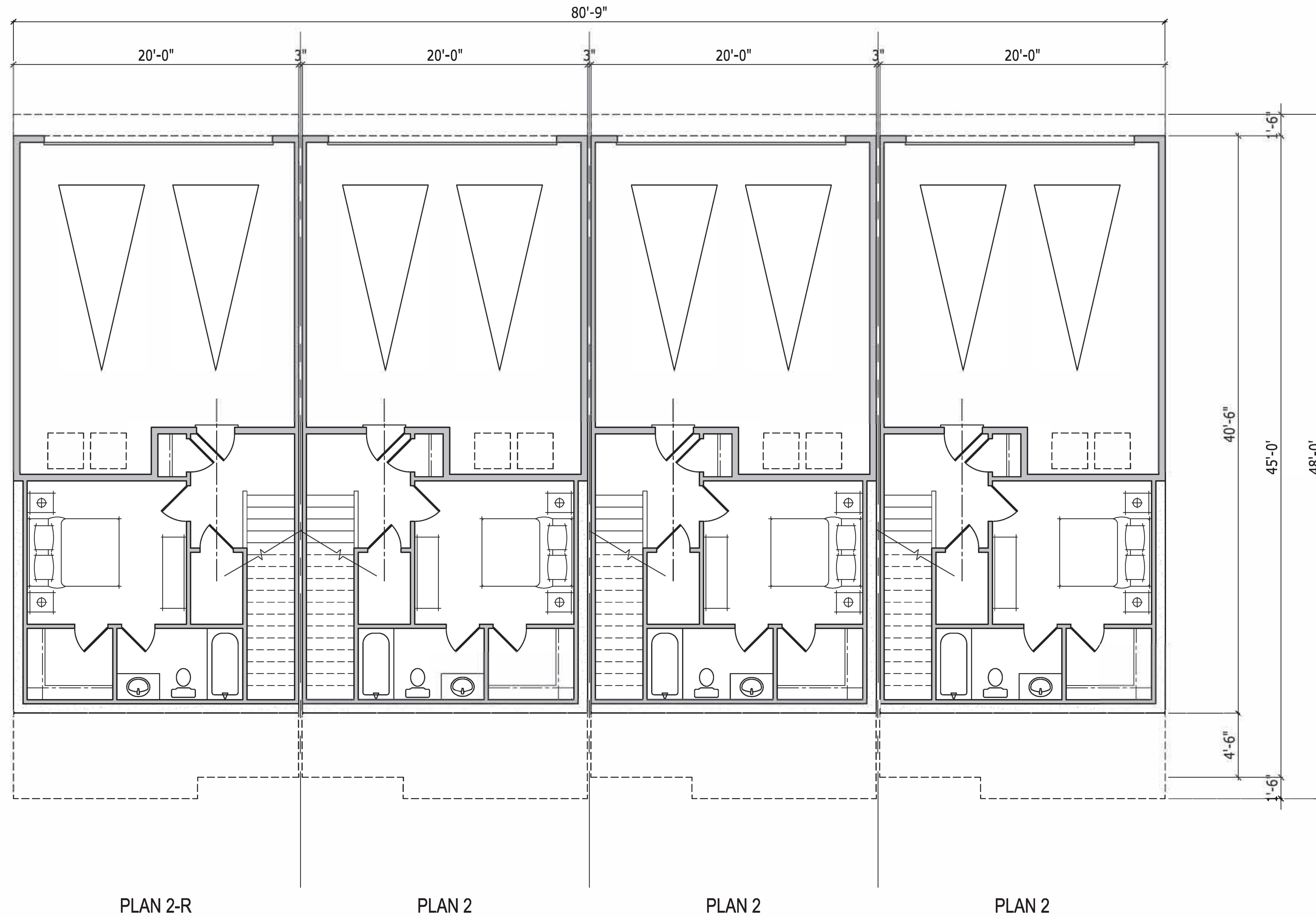
PLAN 2 (LOT 25-44 & 65-83)

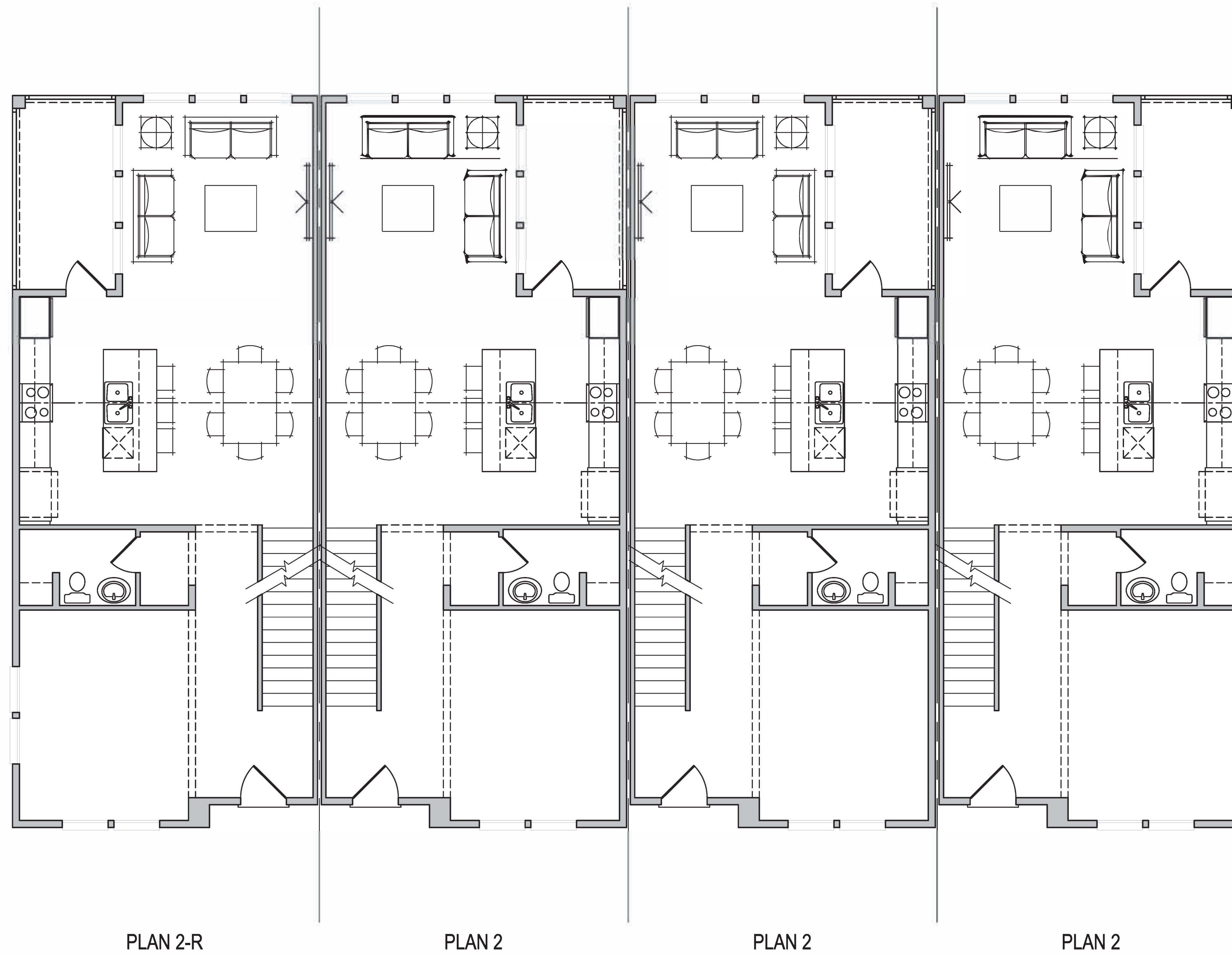
CAMAS MEADOWS TOWNS - 20' x 45' ATTACHED ALLEY LOADED TUCK UNDER

CAMAS, WA

06-29-2022

A - 13



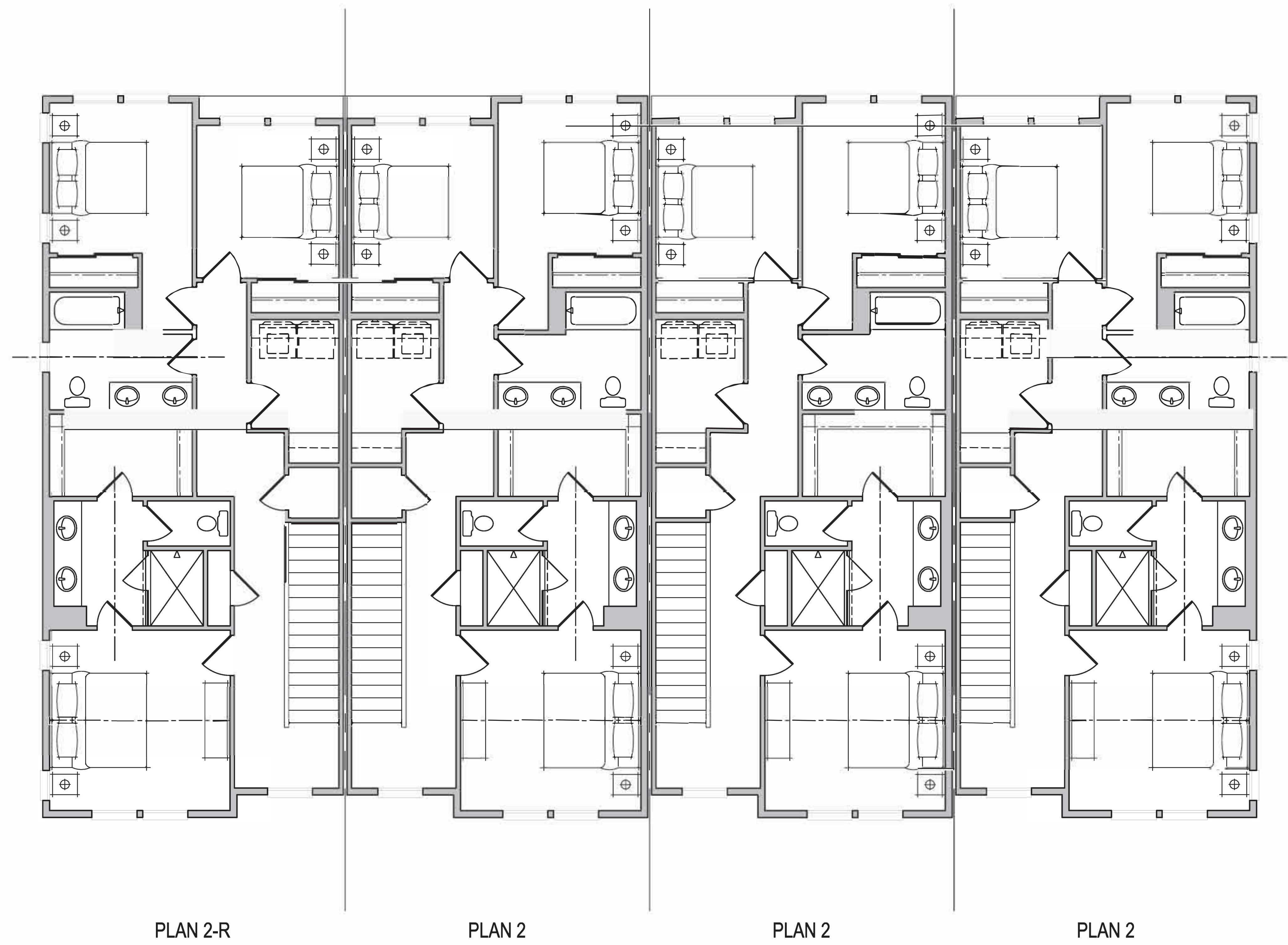


PLAN 2-R

PLAN 2

PLAN 2

PLAN 2





PLAN 2-R

PLAN 2

PLAN 2

PLAN 2-R

FRONT ELEVATION

MATERIAL LEGEND

- A. CONCRETE FLAT TILE
- B. STONE VENEER
- C. RECESSED WINDOW
- D. LIGHT FIXTURE
- E. BOARD AND BATTEN SIDING
- F. LAP SIDING
- G. HARDIE PANEL
- H. METAL AWNING
- I. METAL RAILING

CAMAS MEADOWS TOWNS - 24' x 50' ATTACHED FRONT LOADED

CONTEMPORARY

06-29-2022

A - 17

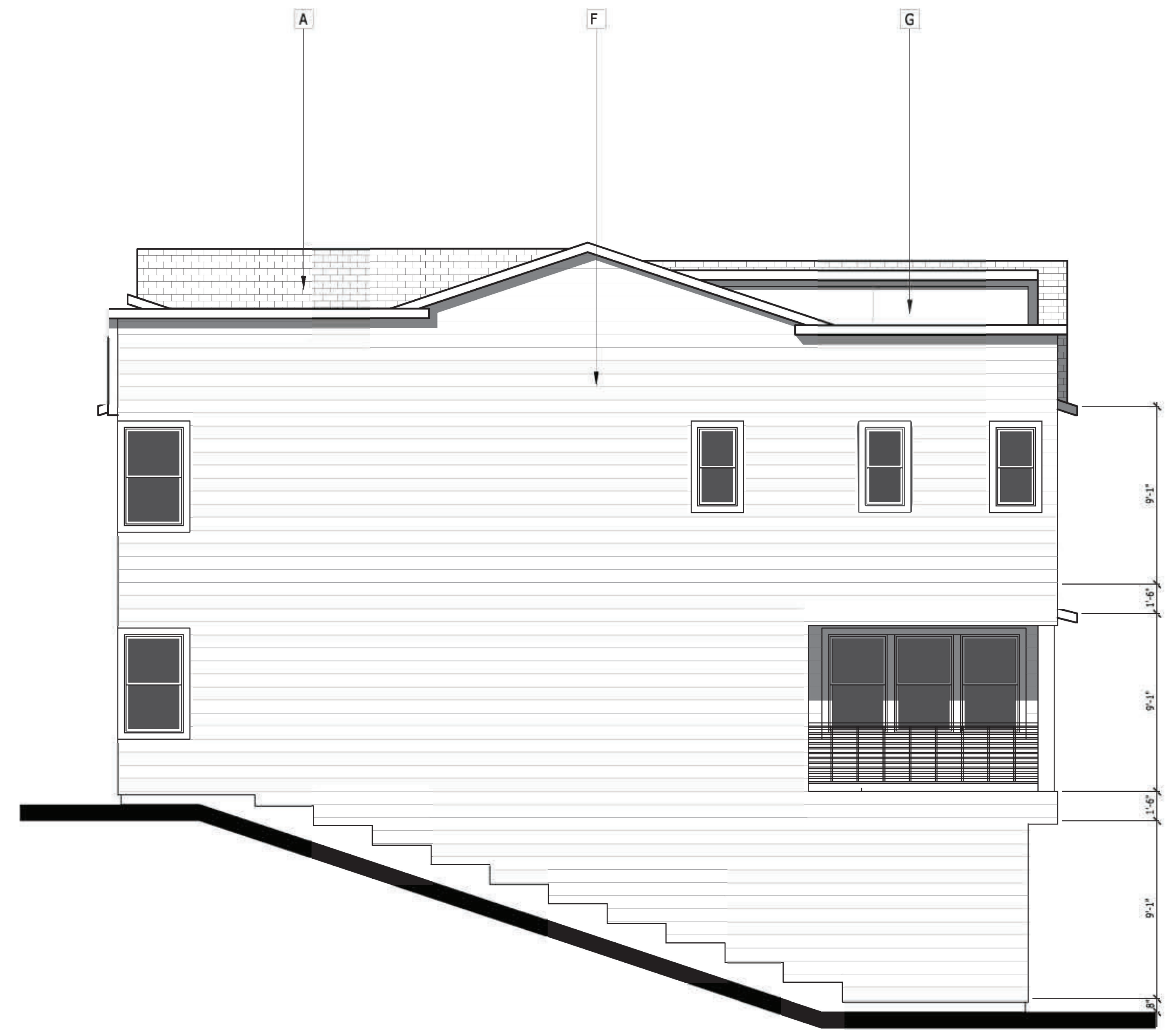
CAMAS, WA

4 PLEX COMPOSITE BUILDING PLAN (LOT 25-44 & 65-83)





LEFT



RIGHT

SIDE ELEVATIONS

MATERIAL LEGEND

- A. CONCRETE FLAT TILE
- B. STONE VENEER
- C. RECESSED WINDOW
- D. LIGHT FIXTURE
- E. BOARD AND BATTEN SIDING
- F. LAP SIDING
- G. HARDIE PANEL
- H. METAL AWNING
- I. METAL RAILING



PLAN 2-R

PLAN 2

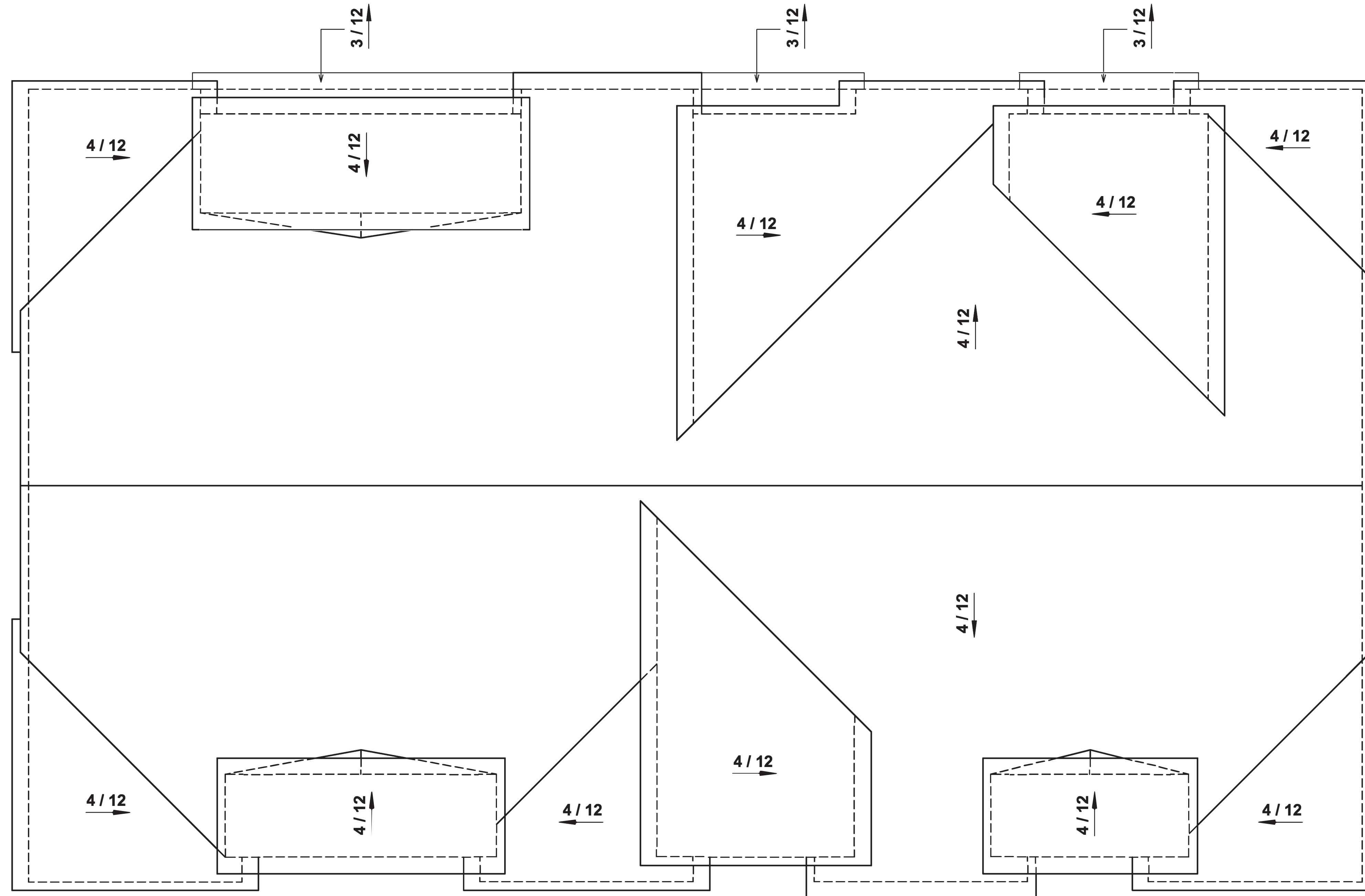
PLAN 2

PLAN 2-R

REAR ELEVATION

MATERIAL LEGEND

- A. CONCRETE FLAT TILE
- B. STONE VENEER
- C. RECESSED WINDOW
- D. LIGHT FIXTURE
- E. BOARD AND BATTEN SIDING
- F. LAP SIDING
- G. HARDIE PANEL
- H. METAL AWNING
- I. METAL RAILING



ROOF PLAN





PLAN 2-R

PLAN 2

PLAN 2

PLAN 2-R

FRONT ELEVATION

MATERIAL LEGEND

- A. CONCRETE FLAT TILE
- B. STONE VENEER
- C. RECESSED WINDOW
- D. LIGHT FIXTURE
- E. BOARD AND BATTEN SIDING
- F. LAP SIDING
- G. HARDIE PANEL
- H. METAL AWNING
- I. METAL RAILING



LEFT



RIGHT

SIDE ELEVATIONS

MATERIAL LEGEND

- A. CONCRETE FLAT TILE
- B. STONE VENEER
- C. RECESSED WINDOW
- D. LIGHT FIXTURE
- E. BOARD AND BATTEN SIDING
- F. LAP SIDING
- G. HARDIE PANEL
- H. METAL AWNING
- I. METAL RAILING



PLAN 2-R

PLAN 2

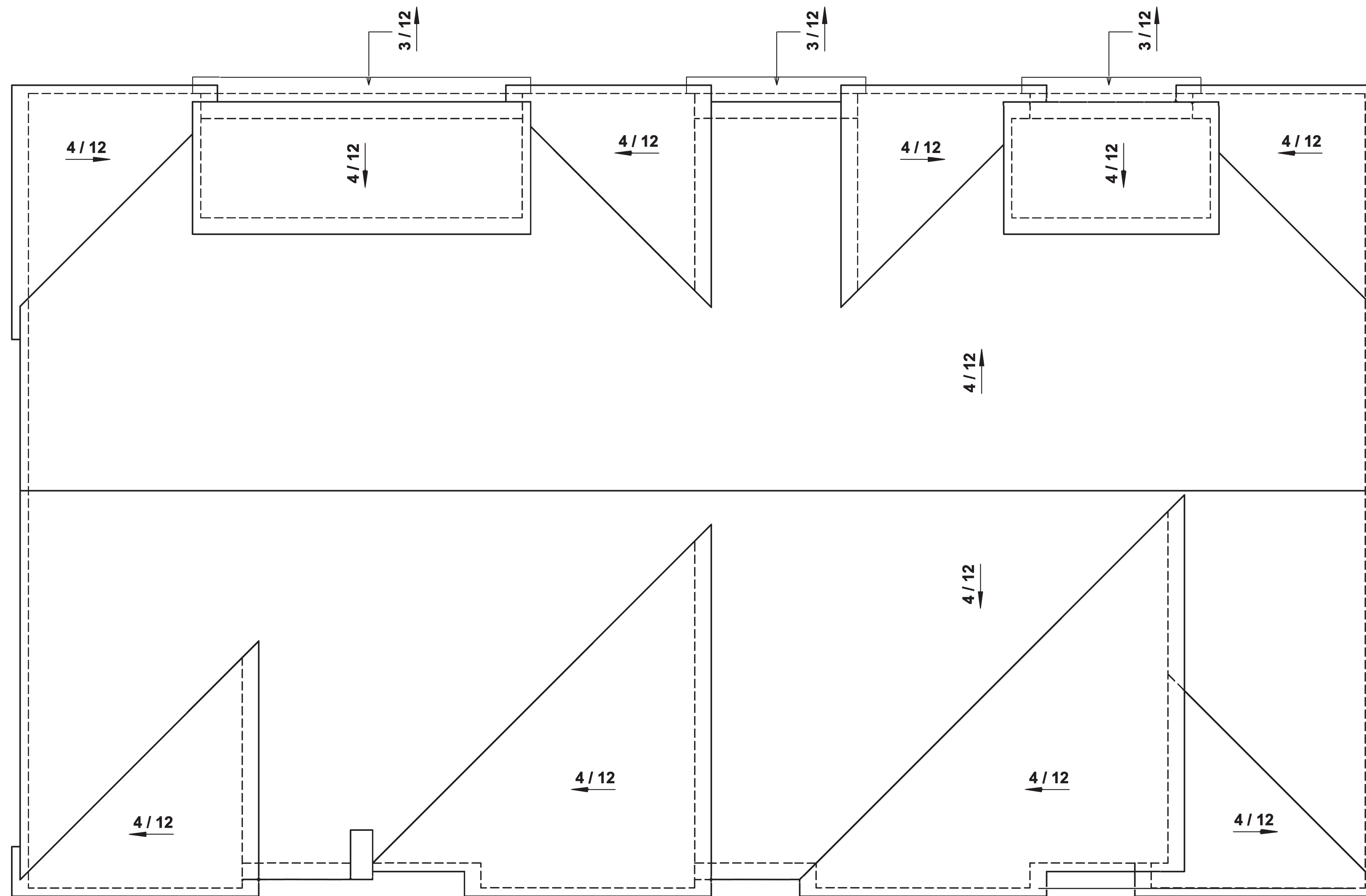
PLAN 2

PLAN 2-R

REAR ELEVATION

MATERIAL LEGEND

- A. CONCRETE FLAT TILE
- B. STONE VENEER
- C. RECESSED WINDOW
- D. LIGHT FIXTURE
- E. BOARD AND BATTEN SIDING
- F. LAP SIDING
- G. HARDIE PANEL
- H. METAL AWNING
- I. METAL RAILING



ROOF PLAN