

Camas, Washington Bikepark and Mountain Bike Destination

What is a bike park?

- Bike-specific, self-contained facility open to the public
- Includes constructed features designed for bikes, in most cases made of asphalt, dirt, rock, or wood
- Combines pumptracks, skillsparks, jumplines and trails
- Supports a variety of user groups like bmx, scooters, and mountain bikes

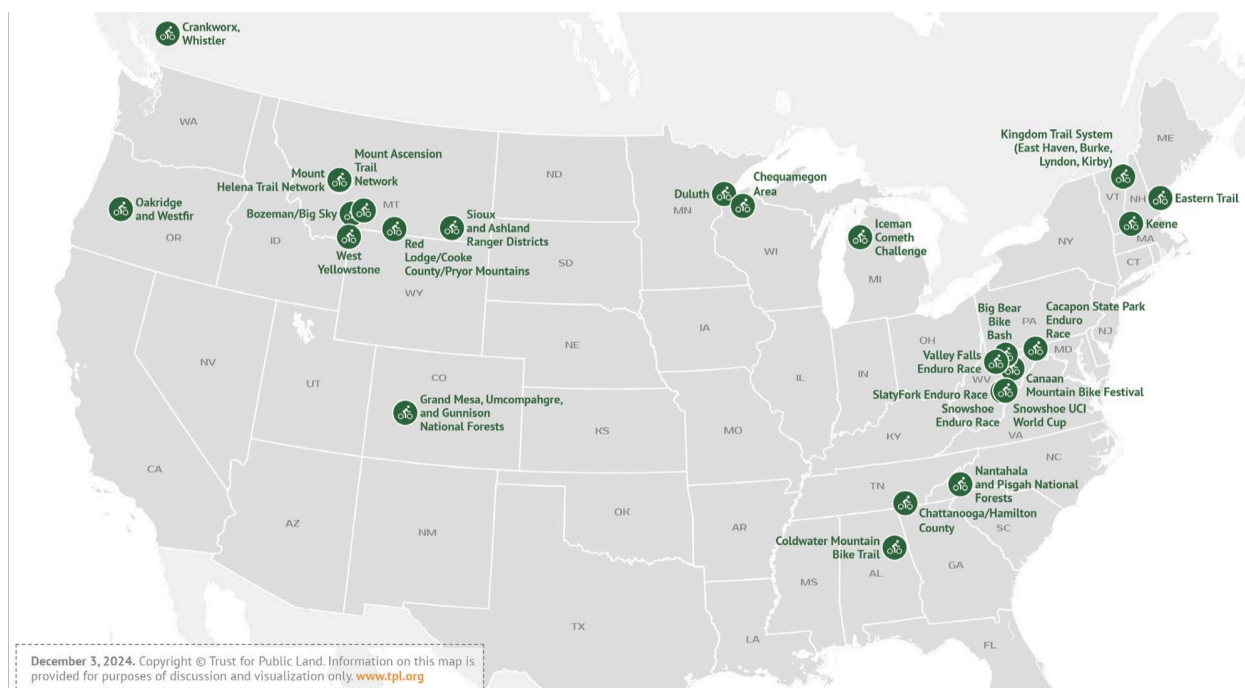
Why one is needed?

- Start executing the goal of turning Camas, Washington into a mountain bike destination
- In Lacamas Park, Camas & Clark County's largest off road specific trail network of 12 total miles, a mere 0.6 miles is dedicated to bike-only trail
- PROS Plan 2021 Community Survey reported "48.7 percent of respondents said there were "not enough" walking or biking trails"
- According to the Trust for Public Lands study, outdoor recreational development is one of the best categories for funding return on investments
- Elevate Camas as a more livable and desirable destination by investing in accessible outdoor recreation, boosting community well-being while fueling local business growth and visitor driven spending.
- According to the Outdoor Foundation, bicycling is the number one gateway activity that gets kids outside and ultimately interested in other activities such as hiking, camping, and fishing
- Lack of close proximity bikeparks exclude people of lower socio-economic status from the multitude of health benefits from cycling
- Provide a safe progression of skills obstacles for children & cyclists of all ages and cycling levels to learn bike handling skills
- Deter unauthorized trail building & channel community efforts into specific areas

What is a mountain bike destination?

- Regional zone attracting mountain bikers to dedicate trips and choices into an area
- Combines bikeparks, single track trails, pumptracks, interconnectivity
- Playful transportation allowing residents and users to travel throughout area via mix of fun, accessible trail networks of unlocked, underutilized green spaces
- When designed well, users enjoy less car dependent transportation routes

Where have mountain bike destinations been successful?



Camas as a mountain bike destination

- Activate unused greenspaces
- Fill regional gap in user needs of family friendly place to take kids in southwest Washington
- Use bikepark and pumptrack as a slice of entire pie fulfilling package of bike destination attributes
- Replicate a proven model of investment for economic growth and community value

Bikepark Examples

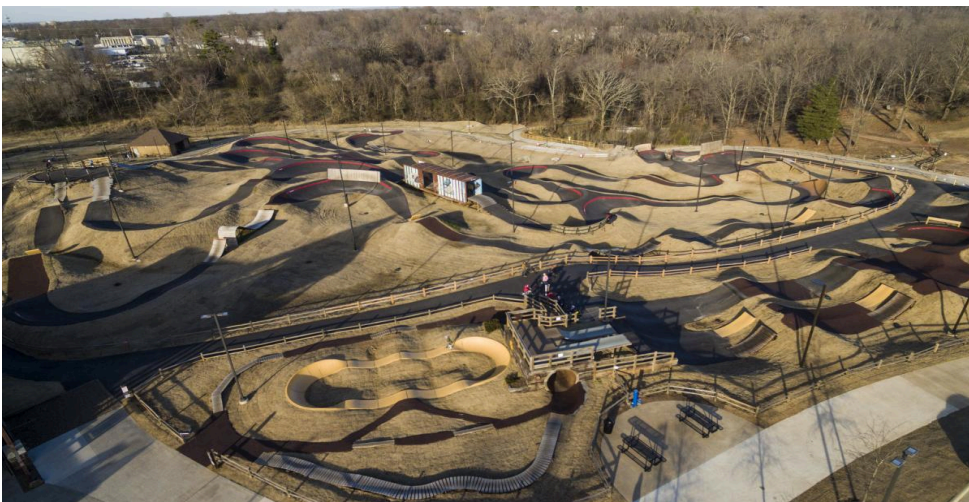
Ruby Hill Bikepark in Denver, Colorado (~seven and a half acres)

<https://www.trailforks.com/region/ruby-hill-bike-park-24939/>



The Railyard in Rogers, Arkansas (~five acres)

<https://visitrogersarkansas.com/railyard-park-downtown-rogers>



Where are other bikeparks in our region?

- Currently no option exists without either an hour plus drive or safe family-friendly parking

Gateway Green in Portland, Oregon (~25 acres)

<http://www.gatewaygreenpdx.org/>



Golden Eagle Park in Hood River, Oregon (one acre)

<https://www.hrats.org/trails/golden-eagle-park-pump-track>



Cedar Park Basecamp in Sandy, OR (~10 acres)

<https://www.ci.sandy.or.us/parks-recreation/page/cedar-park-featuring-base-camp>



White Salmon Bikepark in WS, WA (~25 acres)

<https://explorewhitesalmon.com/white-salmon-bike-park/>



Mountain bike organizational support

Evergreen Mountain Bike Alliance, 501 (c)(3)

https://www.evergreenmtb.org/images/files/EMBA_2023_Annual_Report.pdf

- Seattle based, statewide not for profit trail advocacy organization
- The largest mountain biking nonprofit organization in the pacific northwest
- Over 9,000 active, paid membership statewide
- Strong, local presence able to assist in planning, design, construction and maintenance

Panthers Composite Mountain Bike Team

<https://www.panthercomposite.com/>

- Mountain bike cross country race team composed of middle and high school riders, family members, and volunteer coaches competing in the Oregon Chapter of the National Interscholastic Cycling Association (NICA).
- 60 active boys and girls athletes across middle and high school grades alongside 32 coaches
- Such strong community interest team caps total participants
- Active users of Lacamas Park hosting regular weekly practices

Camas Bike & Sport

<https://www.camasbikes.com/>

- Growth of trails and users supports this family-owned business helping keep revenue on our side of the river

Review of Economic Impacts of Mountain Bike Tourism

Trust for Public Lands

<https://www.tpl.org/media-room/new-trust-for-public-land-report-highlights-economic-power-of-mountain-biking-for-rural-communities>

- Mountain bike tourists of destination riding areas spend an average of 416\$ per trip
- Higher Daily Spending: Mountain bikers tend to outspend hikers and other forest users.
- While general outdoor enthusiasts might focus on low-cost activities, mountain biking involves substantial investment in equipment and travel, with many riders spending between \$60 and \$100 per day while traveling.

Bentonville, Arkansas

<https://www.visitbentonville.com/articles/post/bentonville-arkansas-is-disneyland-for-mountain-bikers/>

- 74 million in trail development over ten years generates over ~150 million ANNUALLY for the region

Bellingham, Washington


<https://storymaps.arcgis.com/stories/6e9ae8c3beb64a7c8d2e922fde7f6ce4>

- 30 percent of mountain bikers in Bellingham are from out of Whatcom County
- Two-thirds of the out-of-town cyclists make more that \$70,000 a year, and more than half reported spending a minimum of \$40 each time they visited. "

Washington State Economic Analysis for Outdoor Recreation

<https://headwaterseconomics.org/trail/economic-analysis-of-outdoor-recreation-in-washington-state-2020-update/>

- For every \$1 dollar spent on Washington state outdoor recreation, \$1.52 in economic activity was generated in the regional economy.
- Clark county spends \$715,959,000 on outdoor recreation and gets back \$1,028,143,000, a multiplier of 1.4x back for every dollar invested.



This would not be a park expense, but a recurring revenue generating regional asset

Contact information for further questions

Jeremy Morse

Evergreen Southwest's Lacamas Park Trail Steward and Camas/Clark County Bikepark Official
Advocate/Representative

Jeremy.ICU.Morse@gmail.com cell: (972) 322-8650